

Beyond First Year Retention: The Graduation Initiative

CSRDE National Symposium on Student Retention
Little Rock, Arkansas – September 30, 2008

Patricia Glenn, Ph.D.

Associate Dean for Retention & Graduation

Clint Rodenfels, MSW

Associate Director, Graduation Initiative



Overview

- Cultural & political climate
- Goal
- Programs & activities
- Future directions
- Pursuing on your campus

Legislative Mandates

Year	Driver	Description
2000	n/a	THECB issues <i>Closing the Gaps</i>
2003	HB 3015	Deregulates tuition for state institutions
2004	RP 31	Requires comprehensive accountability reporting
2005	HB 1172	Lowers cap on state paid tuition (max 30-hours beyond requirement for degree)
2007	SB 1231	Sets limit of 6 course drops over student's undergraduate career
2008	RP 67	Creates task force to establish system of incentive funding for higher education

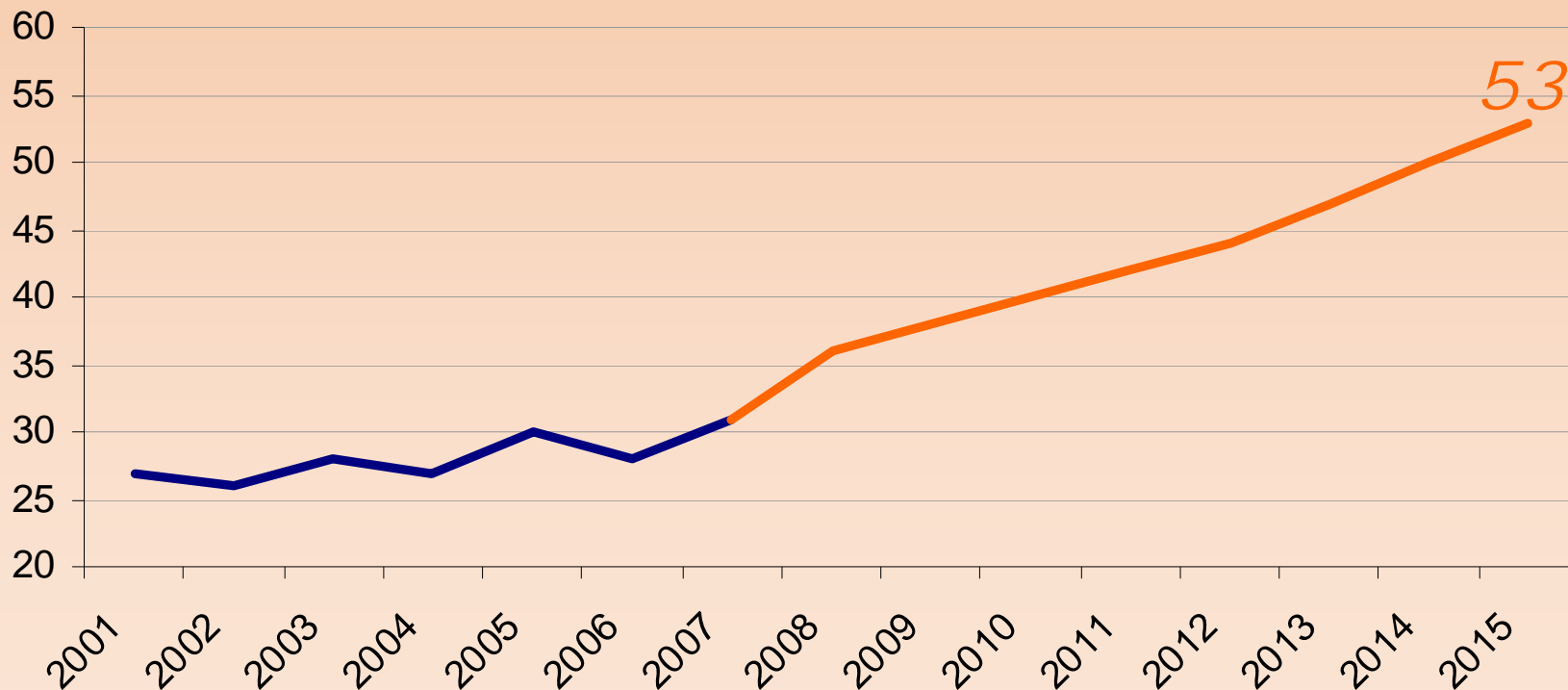
University Profile

- Established 1969
- 3 campuses, 8 colleges
- Mission of access and excellence
- 28,533 students
- 2nd largest in UT System
- 94.7% in-state students (49.4% Bexar county)
 - 68.6% from South Texas
 - 12.7% from Gulf Coast
- HSI, majority minority
 - 42.9% Hispanic
 - 39.8% White
 - 7.6% African American
 - 5.6% Asian/Pac. Islander
 - 4.1% Int'l or unknown
- 52.4% F, 47.6% M
- Commuters
- 70.5% of students attend full-time

Source: UTSA Office of Institutional Research (Fact Book, Fall 2007)

Goal

53% graduation rate by 2015



Source: UTSA Office of Institutional Research

Programs & Activities

- **Short-term**
 - Understand the problem
 - Establish relationships & trust
 - Pull students back across 6-year horizon
- **Long-term**
 - Reduce or remove barriers to graduation
 - Increase 5- and 4-year graduation rates

Late Intervention

- **Targeted 2001 Entering Cohort**
 - Enrolled, but not graduated
 - 98+ accumulated credit hours
 - Minimum 2.0 GPA
- **Graduation Incentive Award**
- **Additional Assistance & Advice**

Late Intervention Preliminary Results

Cohort Term	Cohort Size	Retention 1-year	Graduation		
			4-years	5-years	6-years
1998	1821	58.3	6.4	19.7	27.1
1999	1654	58.0	6.3	22.1	30.0
2000	1719	63.0	7.0	21.0	28.2
2001	1677	63.7	7.6	22.9	31.3
2002	2486	64.0	8.7	22.4	
2003	2968	61.9	8.7		
2004	3432	64.8			
2005	3450	65.3			
2006	3597	66.1			

Source: UTSA Office of Institutional Research

Analyst College Assignment

The colleges account for 88% of entering cohort students. The 12% remaining were undecided with no college affiliation on entry to UTSA.

College	%*	Analyst
Architecture	5	Linda
Business	19	Clint
Education & Human Development	10	Kristi
Engineering	7	Kristi
Liberal & Fine Arts	19	Jinny
Public Policy	4	Linda
Sciences	24	Diane

* % = College's percentage of 2001 THECB freshman cohort

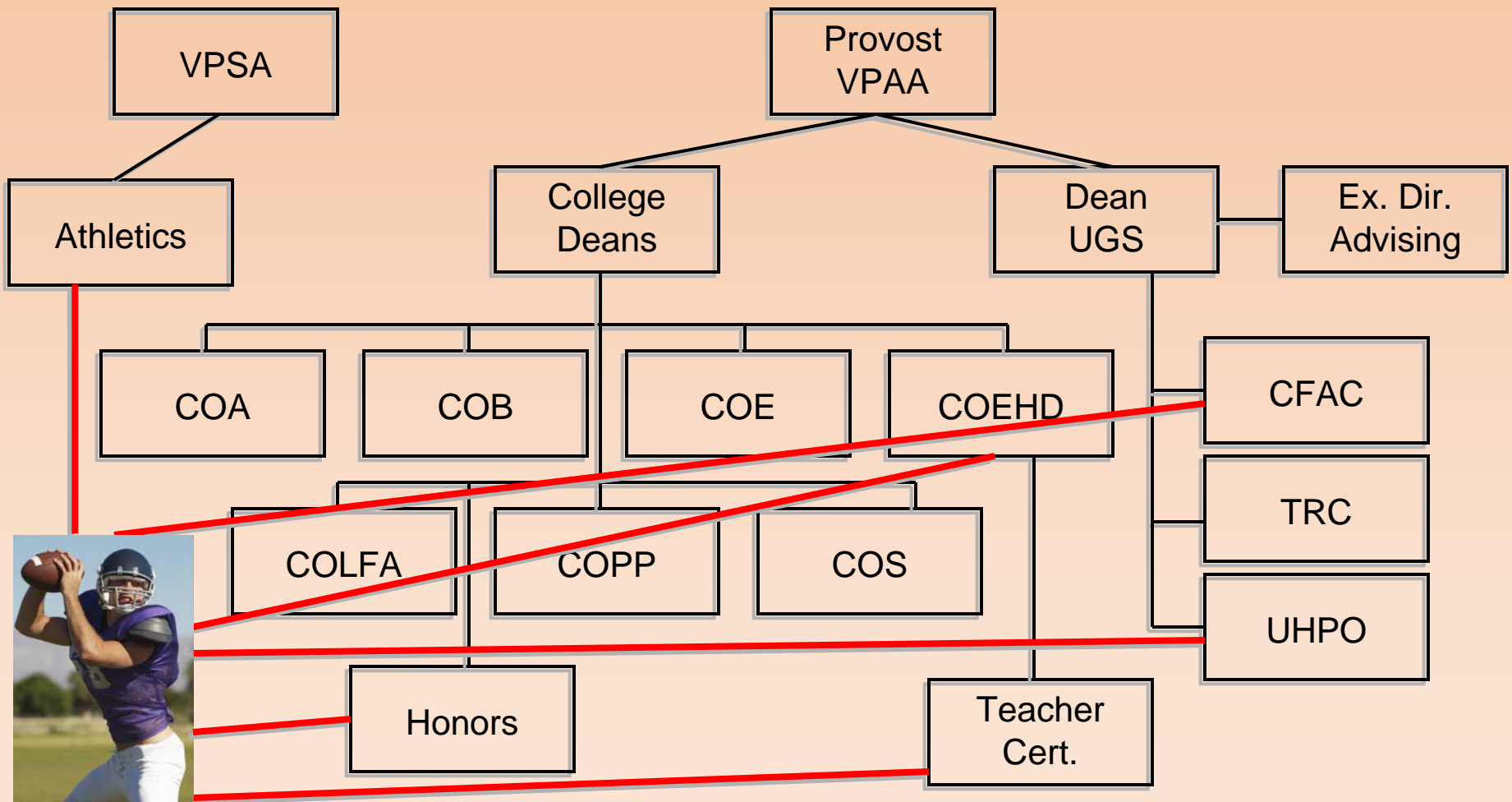
College Graduation Improvement Plans

Time Frame	Activities
Summer 2007	Analysts trained & assigned to colleges
Fall 2007	Analysts work with college stakeholders
December 2007	Analysis & recommendations delivered to college Deans
Spring 2008	Final college graduation improvement plans approved by college Deans
Ongoing	Aid colleges with implementation efforts

Institutional Graduation Improvement Plan

- I – Academic Advising System
- II – Student Under-preparation
- III – Course Availability
- IV – Reliance on Adjunct Faculty
- V – Cost of Education

Academic Advising System



Reliance on Adjunct Faculty

“If the negative effects of part-time faculty exposure on first-year student retention continue to be ignored within institutions of higher education, these institutions may continue to sacrifice their ability to retain students in order to remain cost efficient.”

—Eagan & Jaeger (In Press)

Year	Lower-division Adjunct Taught
2003	56.2%
2004	60.7%
2005	65.7%
2006	68.8%
2007	73.0%

Source: UTSA Office of Institutional Research

Cost of Education

Year	Statewide	Increase from previous year	UTSA	Increase from previous year
2002	\$1,658		\$1,703	
2003	\$1,934	16.65%	\$2,222	30.48%
2004	\$2,284	18.10%	\$2,849	28.22%
2005	\$2,464	7.88%	\$2,985	4.77%
2006	\$2,713	10.10%	\$3,362	12.63%
2007	\$2,951	8.77%	\$3,621	7.70%

Source: Texas Higher Education Coordinating Board

Future Directions

- Student Money Matters
- Get-to-Graduation Outreach
- Policy Analysis
- Specialized Analyses for Academic Units

Pursuing at your Campus?

- Perception of need
- Executive leadership buy-in
- Staff with skills
- Funding
- Institutional savvy
- Assessment

Links of Interest

- **CSU Task Force on Facilitating Graduation Report**
<http://www.calstate.edu/AcadSen/Records/Reports/FacilitatingGraduation.pdf>
- **THECB Closing the Gaps**
<http://www.thecb.state.tx.us/ClosingTheGaps/default.cfm>
- **THECB Higher Education Accountability System**
<http://www.txhighereddata.org/Interactive/Accountability/>
- **The Toolbox Revisited**
<http://www.ed.gov/rschstat/research/pubs/toolboxrevisit/toolbox.pdf>
- **UNM Graduation Project**
<http://www.unm.edu/~thegrad/index.html>
- **UTSA Office of Institutional Research**
<http://www.utsa.edu/ir/>
- **UT System Accountability & Performance Report**
<http://www.utsystem.edu/osm/accountability/2007/homepage.htm>
- **UT System Facts & Trends**
<http://www.utsystem.edu/isp/factstrends.htm>
- **UT System Graduation Rates Initiative**
<http://www.utsystem.edu/aca/initiatives/gradrates/gradrates.htm>

Contact Information

Patricia Glenn

patricia.glenn@utsa.edu

210-458-4694

Clint Rodenfels

clinton.rodenfels@utsa.edu

210-458-4687

<http://www.utsa.edu/gi/>

