

The University of Texas at San Antonio Fact Book for Fall 2007

[UTSA History and General Information](#)

[Current UTSA Vision and Mission](#)
[Current University of Texas System Regents](#)
[Current UTSA Executive Officers](#)
[Written History of UTSA](#)
[Chronology of UTSA](#)
[UTSA Presidents and Dates of Service](#)
[Interesting UTSA Today Headlines](#)

[Student Enrollment](#)

[Demographics of Students Enrolled](#)
[Students Enrolled by Residence Category](#)
[Fall 2007 College Structure Enrollment](#)
[Student FTE](#)

[New Student Information and Success](#)

[First Time Undergraduates Applied, Accepted, and Enrolled](#)
[First Time Full Time Undergraduate Information](#)
[Full Time Transfer Undergraduate Information](#)
[First Time and Transfer Part Time Undergraduate Information](#)
[Full Time Transfer Undergraduate Information](#)
[UTSA First Time Full Time Cohort Information](#)
[Degrees Awarded by Year](#)

[Faculty and Staff Information](#)

[All Faculty Members and Teaching Assistants](#)
[FTE of All Faculty Members and Teaching Assistant](#)
[Instructional Faculty* Members and Teaching Assistants](#)
[FTE of Instructional Faculty and Teaching Assistants](#)
[All Faculty Rank by Ethnicity](#)
[UTSA Staff Information by EEO Category](#)

[Courses Taught at UTSA](#)

[Courses by Level and Course Type](#)
[Courses by Level and Tenure Status](#)
[Number of Courses by Class Size](#)
[Courses by College](#)

[Financial and Facilities Information](#)

[FY 2003 to 2007 Annual Financial Report](#)
[UTSA Endowment Market Value](#)
[Sponsored Program Funds](#)
[Student Financial Aid](#)
[UTSA Facilities Information](#)
[Definitions and Abbreviations by Section](#)

UTSA History and General Information

Current UTSA Vision and Mission

Vision

The University of Texas at San Antonio is creating the future of Texas by developing leaders for a multicultural society and by building innovative partnerships that will transform the economy of the region.

Mission

The University of Texas at San Antonio is a premier public institution of higher education with a growing national and international reputation. Renowned as an institution of access and excellence at both the undergraduate and graduate levels, UTSA is committed to research, discovery, learning, and public service. UTSA embraces the multicultural traditions of Texas, serves as a center for intellectual and creative resources, and is a catalyst for the economic development of Texas.

Current University of Texas System Regents

H. Scott Caven, Jr., Chairman

Francie A. Frederick, General Counsel to the Board of Regents

James R. Huffines, Vice Chairman

Robert B. Rowling, Vice Chairman

John W. Barnhill, Jr.

Paul Foster

Randall Matthew Camarillo

Printice L. Gary

James D. Dannenbaum

Colleen McHugh

Robert A. Estrada

See <http://www.utsystem.edu/bor/> for the most up to date information.

Current UTSA Executive Officers

President: Ricardo Romo, Ph.D.

Interim Provost and Vice President for Academic Affairs: Julius M Gribou, M.A.

Vice President for Student Affairs: Gage E. Paine, Ph.D.

Vice President for Business Affairs: Kerry L. Kennedy

Interim Vice President for University Advancement: Janice Odom

Vice President for Research: Robert W. Gracy, Ph.D.

Vice President for Community Services: Jude Valdez, Ph.D.

See <http://www.utsa.edu/directory/administrativeOffices.cfm> for the most up to date information.

Other UTSA sites of Interest:

Chronology of UTSA (<http://www.utsa.edu/about/History/>) – Follow the development of UTSA from 1969 to present.

UTSA Presidents and Dates of Service (<http://www.utsa.edu/about/History/UTSAPresidents.html>) – A history of UTSA's presidents and their accomplishments at UTSA.

About UTSA (<http://www.utsa.edu/About/>) – This site provides a great overview of UTSA including Academics, Research, Community Impact and other information about UTSA.

Interesting UTSA Today Headlines for 2007-2008:

New UTSA center to host Jan. 14 open house <http://www.utsa.edu/today/2008/01/icecenter.cfm>
County OKs \$15 million for UTSA Athletics in proposed venue tax renewal <http://www.utsa.edu/today/2008/01/venuetax.cfm>
Congressmen announce \$6.4 million CIAS funding <http://www.utsa.edu/today/2008/01/ciasfunding.cfm>
Valero Energy program provides scholarships <http://www.utsa.edu/today/2007/12/valero.cfm>
UTSA Athletics receives largest gift from alumnus <http://www.utsa.edu/today/2007/12/clynes.cfm>
Regents OK \$2M to spur invention development <http://www.utsa.edu/today/2007/12/inventions.cfm>
UTSA adds bachelor's degree in construction science <http://www.utsa.edu/today/2007/12/archdegree.cfm>
Study estimates \$193M impact of proposed athletics complex <http://www.utsa.edu/today/2007/12/iedstudy.cfm>
UTSA business college opens career center <http://www.utsa.edu/today/2007/11/cspd.cfm>
BusinessWeek ranks M.B.A. third in Southwest <http://www.utsa.edu/today/2007/11/bizweek.cfm>
Bank of America gives \$1 million for child program <http://www.utsa.edu/today/2007/10/capri.cfm>
UTSA receives football feasibility study <http://www.utsa.edu/today/2006/11/study.cfm>

What's New at UTSA?

New Buildings

New Laurel Village offers comfort, security <http://www.utsa.edu/today/2007/08/laurel.cfm>
Full-service Starbucks comes to UTSA in spring <http://www.utsa.edu/today/2007/12/starbucks.cfm>
Expanded Campus Rec offers new services <http://www.utsa.edu/today/2007/08/campusrec.cfm>
Expanded University Center to open June 2008
<http://www.utsa.edu/today/2007/08/ucexpansion.cfm?585C05110F421C57314F027D55>
New Laurel Village offers comfort, security <http://www.utsa.edu/today/2007/08/laurel.cfm?585C05110F421C57314F027D55>

New Hires

UTSA names provost and VP for academic affairs <http://www.utsa.edu/today/2007/12/frederick.cfm>
UTSA announces VP for university advancement <http://www.utsa.edu/today/2007/12/french.cfm>
UTSA provost's office announces staff changes <http://www.utsa.edu/today/2007/08/changes.cfm>

Interesting Headlines (cont.)

Events

ITC presents 'Holiday, Texas' exhibit through Jan. 6 <http://www.utsa.edu/today/2007/12/holidaytx.cfm>
UTSA opens holiday season with '007' cabaret <http://www.utsa.edu/today/2007/11/cabaret.cfm>
President's Scholarship and Awards Dinner raises \$4.6M <http://www.utsa.edu/today/2007/10/presdinner.cfm>
Yoko Ono exhibit comes to UTSA Sept. 26-Oct. 28 <http://www.utsa.edu/today/2007/09/ono.cfm>
UTSA celebrates eighth successful alumni gala <http://www.utsa.edu/today/2007/10/gala.cfm>
San Antonio European Film Festival is Sept. 17-20 <http://www.utsa.edu/today/2007/09/filmfest.cfm>
Texas Folklife Festival is about heritage and goodwill <http://www.utsa.edu/today/2007/06/tffheritage.cfm>
Institute of Texan Cultures hosts Asian Festival, Feb. 10 <http://www.utsa.edu/today/2007/02/asianfest.cfm>
'Great Conversation' raises discussion, scholarships <http://www.utsa.edu/TODAY/2007/03/greatconv3.cfm?header=-1>

For the most up-to-date headlines, please visit www.utsa.edu/today

Student Enrollment

The student enrollment information comes from the Coordinating Board Enrollment Report (CBM001) and the students' major comes from the Banner system. The college information is for the current college structure, meaning that the organization of the Colleges is based on the departments which were in each college in Fall 2006. For more information please contact the Office of Institutional Research at (210) 458-4706.

Number of Students Enrolled by Classification

Classification	Fall 2003		Fall 2004		Fall 2005*		Fall 2006		Fall 2007	
	#	%	#	%	#	%	#	%	#	%
Freshmen	6,199	25.1	6,561	25.1	6,784	24.9	7,428	26.2	7,567	26.5
Sophomore	3,695	15.0	4,122	15.7	4,324	15.8	4,587	16.2	4,560	16.0
Junior	4,217	17.1	4,652	17.8	5,049	18.5	5,068	17.9	5,196	18.2
Senior	6,511	26.4	6,924	26.5	7,230	26.5	7,315	25.8	7,382	25.9
Post-Bac	620	2.5	278	1.1	476	1.7	340	1.2	329	1.2
Masters	3,203	13.0	3,349	12.8	3,062	11.2	3,217	11.3	3,049	10.7
Doctoral	220	0.9	289	1.1	366	1.3	424	1.5	450	1.6
Total	24,665	100.0	26,175	100.0	27,291	100.0	28,379	100.0	28,533	100.0

*Students affected by Hurricane Katrina are not included in the Fall 2005 Enrollment

Semester Credit Hours* by Classification

Classification	Fall 2003		Fall 2004		Fall 2005*		Fall 2006		Fall 2007	
	SCH	%	SCH	%	SCH	%	SCH	%	SCH	%
Freshmen	79,770	25.1	83,168	25.1	87,244	24.9	95,230	26.2	96,729	26.5
Sophomore	44,407	15.0	49,769	15.7	51,749	15.8	55,250	16.2	55,491	16.0
Junior	49,513	17.1	54,577	17.8	59,022	18.5	58,987	17.9	60,866	18.2
Senior	70,564	26.4	74,801	26.5	77,433	26.5	79,667	25.8	80,756	25.9
Post-Bac	3,272	2.5	2,171	1.1	3,001	1.7	2,139	1.2	1,881	1.2
Masters	19,829	13.0	20,561	12.8	19,158	11.2	20,610	11.3	19,694	10.7
Doctoral	1,687	0.9	2,207	1.1	2,814	1.3	3,172	1.5	3,288	1.6
Total	269,042	100.0	287,254	100.0	300,421	100.0	315,055	100.0	318,705	100.0

*Semester Credit Hours are based on the student's level, not the course level

Number of Students Enrolled by Gender

	Fall 2003		Fall 2004		Fall 2005*		Fall 2006		Fall 2007	
Gender	#	%	#	%	#	%	#	%	#	%
Female	13,429	54.4	14,230	54.4	14,645	53.7	15,156	53.4	14,942	52.4
Male	11,236	45.6	11,945	45.6	12,646	46.3	13,223	46.6	13,591	47.6
Total	24,665	100.0	26,175	100.0	27,291	100.0	28,379	100.0	28,533	100.0

Semester Credit Hours by Gender

	Fall 2003		Fall 2004		Fall 2005*		Fall 2006		Fall 2007	
Gender	SCH	%	SCH	%	SCH	%	SCH	%	SCH	%
Female	144,215	54.4	153,817	54.4	158,983	53.7	165,807	53.4	164,373	52.4
Male	124,827	45.6	133,437	45.6	141,438	46.3	149,248	46.6	154,332	47.6
Total	269,042	100.0	287,254	100.0	300,421	100.0	315,055	100.0	318,705	100.0

Number of Students Enrolled by Course Load

	Fall 2003		Fall 2004		Fall 2005*		Fall 2006		Fall 2007	
Course Load	#	%	#	%	#	%	#	%	#	%
Part Time Students	7,903	32.0	8,187	31.3	8,495	31.1	8,734	30.8	8,416	29.5
Full Time Students	16,762	68.0	17,988	68.7	18,796	68.9	19,645	69.2	20,117	70.5
Total	24,665	100.0	26,175	100.0	27,291	100.0	28,379	100.0	28,533	100.0

Semester Credit Hours by Course Load

	Fall 2003		Fall 2004		Fall 2005*		Fall 2006		Fall 2007	
Course Load	SCH	%	SCH	%	SCH	%	SCH	%	SCH	%
Part Time Students	48,542	32.0	51,868	31.3	54,530	31.1	56,524	30.8	53,998	29.5
Full Time Students	220,500	68.0	235,386	68.7	24,5891	68.9	25,8531	69.2	264,707	70.5
Total	269,042	100.0	287,254	100.0	300,421	100.0	315,055	100.0	318,705	100.0

Number of Students Enrolled by Level and Course Load
Number of Undergraduate Students Enrolled by Course Load

	Fall 2003		Fall 2004		Fall 2005*		Fall 2006		Fall 2007	
Course Load*	#	%	#	%	#	%	#	%	#	%
Part Time	50,85	24.7	5,515	24.8	5,863	25.1	6,094	25.0	5,926	24.0
Full Time	15,537	75.3	16,744	75.2	17,524	74.9	18,304	75.0	18,779	76.0
Total	20,622	100.0	22,259	100.0	23,387	100.0	24,398	100.0	24,705	100.0

Number of Post-Bac Students Enrolled by Course Load

	Fall 2003		Fall 2004		Fall 2005*		Fall 2006		Fall 2007	
Course Load**	#	%	#	%	#	%	#	%	#	%
Part Time	496	80.0	155	55.8	343	72.1	246	72.4	250	76.0
Full Time	124	20.0	123	44.2	133	27.9	94	27.6	79	24.0
Total	620	100.0	278	100.0	476	100.0	340	100.0	329	100.0

Number of Masters Students Enrolled by Course Load

	Fall 2003		Fall 2004		Fall 2005*		Fall 2006		Fall 2007	
Course Load**	#	%	#	%	#	%	#	%	#	%
Part Time	2,256	70.4	2,429	72.5	2,177	71.1	2,238	69.6	2,067	67.8
Full Time	947	29.6	920	27.5	885	28.9	979	30.4	982	32.2
Total	3,203	100.0	3,349	100.0	3,062	100.0	3,217	100.0	3,049	100.0

Number of Doctoral Students Enrolled by Course Load

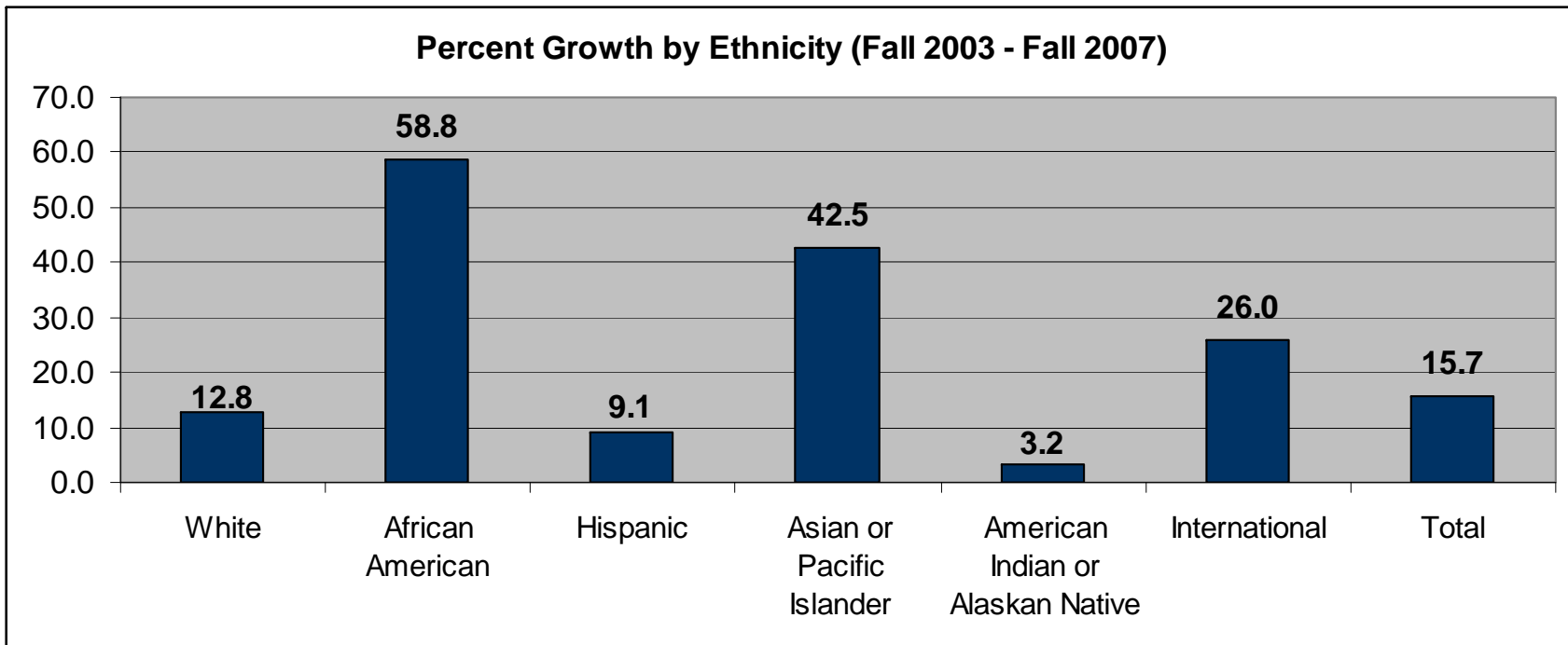
	Fall 2003		Fall 2004		Fall 2005*		Fall 2006		Fall 2007	
Course Load**	#	%	#	%	#	%	#	%	#	%
Part Time	66	30.0	88	30.4	112	30.6	156	36.8	173	38.4
Full Time	154	70.0	201	69.6	254	69.4	268	63.2	277	61.6
Total	220	100.0	289	100.0	366	100.0	424	100.0	450	100.0

*For Undergraduates full time is considered 12 hours or more

**For Post-Bacs, Masters, and Doctoral students 9 hours and above is considered full time

Number of Students Enrolled by Ethnicity

Ethnicity	Fall 2003		Fall 2004		Fall 2005*		Fall 2006		Fall 2007	
	#	%	#	%	#	%	#	%	#	%
White	10,062	40.8	10,621	40.6	10,810	39.6	11,298	39.8	11,351	39.8
African American	1,367	5.5	1,596	6.1	1,816	6.7	2,029	7.1	2,171	7.6
Hispanic	11,226	45.5	11,874	45.4	12,323	45.2	12,446	43.9	12,252	42.9
Asian or Pacific Islander	1,131	4.6	1,218	4.7	1,407	5.2	1,625	5.7	1,612	5.6
American Indian or Alaskan Native	124	0.5	133	0.5	135	0.5	138	0.5	128	0.4
International	755	3.1	730	2.8	786	2.9	795	2.8	951	3.3
Unknown	0	0.0	3	0.0	14	0.1	48	0.2	68	0.2
Total	24,665	100.0	26,175	100.0	27,291	100.0	28,379	100.0	28,533	100.0



Semester Credit Hours by Ethnicity

Ethnicity	Fall 2003		Fall 2004		Fall 2005*		Fall 2006		Fall 2007	
	SCH	%	SCH	%	SCH	%	SCH	%	SCH	%
White	10,8947	40.8	115,937	40.6	118,742	39.6	126,577	39.8	128,032	39.8
African American	15,393	5.5	18,071	6.1	20,717	6.7	23,260	7.1	25,003	7.6
Hispanic	121,315	45.5	129,093	45.4	133,222	45.2	134,241	43.9	133,231	42.9
Asian or Pacific Islander	13,682	4.6	14,591	4.7	1,7100	5.2	20,177	5.7	19,759	5.6
American Indian or Alaskan Native	1,448	0.5	1,511	0.5	1,580	0.5	1,625	0.5	1,450	0.4
International	8,257	3.1	8,021	2.8	8,985	2.9	8,817	2.8	10,742	3.3
Unknown	0	0.0	30	0.0	75	0.1	358	0.2	488	0.2
Total	269,042	100.0	287,254	100.0	300,421	100.0	315,055	100.0	318,705	100.0

Undergraduate Enrollment by Ethnicity

Ethnicity	Fall 2003		Fall 2004		Fall 2005*		Fall 2006		Fall 2007	
	#	%	#	%	#	%	#	%	#	%
White	8,230	39.9	8,843	39.7	9,057	38.7	9,560	39.2	9,741	39.4
African American	1,211	5.9	1,440	6.5	1,638	7.0	1,827	7.5	1,971	8.0
Hispanic	9,651	46.8	10,366	46.6	10,835	46.3	10,992	45.1	10,889	44.1
Asian or Pacific Islander	1,019	4.9	1,088	4.9	1,249	5.3	1,472	6.0	1,458	5.9
American Indian or Alaskan Native	108	0.5	122	0.5	123	0.5	129	0.5	115	0.5
International	403	2.0	400	1.8	484	2.1	413	1.7	531	2.1
Unknown	0	0.0	0	0.0	1	0.0	5	0.0	0	0.0
Total (Undergraduates)	20,622	100.0	22,259	100.0	23,387	100.0	24,398	100.0	24,705	100.0

Post-Bac Enrollment by Ethnicity

Ethnicity	Fall 2003		Fall 2004		Fall 2005		Fall 2006		Fall 2007	
	#	%	#	%	#	#	#	%	#	%
White	295	47.6	127	45.7	253	53.2	173	50.9	153	46.5
African American	28	4.5	15	5.4	18	3.8	18	5.3	21	6.4
Hispanic	279	45.0	124	44.6	180	37.8	135	39.7	129	39.2
Asian or Pacific Islander	12	1.9	9	3.2	18	3.8	9	2.6	10	3.0
American Indian or Alaskan Native	3	0.5	3	1.1	1	0.2	0	0.0	1	0.3
International	3	0.5	0	0.0	2	0.4	2	0.6	15	4.6
Unknown	0	0.0	0	0.0	4	0.8	3	0.9	0	0.0
Total (Post-Bac)	620	100.0	278	100.0	476	100.0	340	100.0	329	100.0

Masters Enrollment by Ethnicity

Ethnicity	Fall 2003		Fall 2004		Fall 2005		Fall 2006		Fall 2007	
	#	%	#	%	#	%	#	%	#	%
White	1,454	45.4	1,537	45.9	1,358	44.4	1,397	43.4	1,280	42.0
African American	123	3.8	134	4.0	148	4.8	162	5.0	157	5.1
Hispanic	1,238	38.7	1,317	39.3	1,217	39.7	1,215	37.8	1,126	36.9
Asian or Pacific Islander	94	2.9	114	3.4	131	4.3	132	4.1	127	4.2
American Indian or Alaskan Native	13	0.4	8	0.2	10	0.3	8	0.2	11	0.4
International	281	8.8	236	7.0	190	6.2	267	8.3	287	9.4
Unknown	0	0.0	3	0.1	8	0.3	36	1.1	61	2.0
Total (Masters)	3,203	100.0	3,349	100.0	3,062	100.0	3,217	100.0	3,049	100.0

Doctoral Enrollment by Ethnicity

Ethnicity	Fall 2003		Fall 2004		Fall 2005		Fall 2006		Fall 2007	
	#	%	#	%	#	#	%	#	%	#
White	83	37.7	114	39.4	142	38.8	168	39.6	177	39.3
African American	5	2.3	7	2.4	12	3.3	22	5.2	22	4.9
Hispanic	58	26.4	67	23.2	91	24.9	104	24.5	108	24.0
Asian or Pacific Islander	6	2.7	7	2.4	9	2.5	12	2.8	17	3.8
American Indian or Alaskan Native	0	0.0	0	0.0	1	0.3	1	0.2	1	0.2
International	68	30.9	94	32.5	110	30.1	113	26.7	118	26.2
Unknown	0	0.0	0	0.0	1	0.3	4	0.9	7	1.6
Total (Doctoral)	220	100.0	289	100.0	366	100.0	424	100.0	450	100.0

Undergraduate Enrollment by Gender

	Fall 2003		Fall 2004		Fall 2005		Fall 2006		Fall 2007	
Gender	#	%	#	%	#	%	#	%	#	%
Female	11,034	53.5	11,855	53.3	12,346	52.8	12,820	52.5	12,709	51.4
Male	9,588	46.5	10,404	46.7	11,041	47.2	11,578	47.5	11,996	48.6
Total (Undergraduates)	20,622	100.0	22,259	100.0	23,387	100.0	24,398	100.0	24,705	100.0

Post-Bac Enrollment by Gender

	Fall 2003		Fall 2004		Fall 2005		Fall 2006		Fall 2007	
Gender	#	%	#	%	#	%	#	%	#	%
Female	405	65.3	201	72.3	295	62.0	202	59.4	188	57.1
Male	215	34.7	77	27.7	181	38.0	138	40.6	141	42.9
Total (Post-Bac)	620	100.0	278	100.0	476	100.0	340	100	329	100.0

Masters Enrollment by Gender

	Fall 2003		Fall 2004		Fall 2005		Fall 2006		Fall 2007	
Gender	#	%	#	%	#	%	#	%	#	%
Female	1,875	58.5	2,026	60.5	1,817	59.3	1,903	59.2	1,804	59.2
Male	1,328	41.5	1,323	39.5	1,245	40.7	1,314	40.8	1,245	40.8
Total (Masters)	3,203	100.0	3,349	100.0	3,062	100.0	3,217	100.0	3,049	100.0

Doctoral Enrollment by Gender

	Fall 2003		Fall 2004		Fall 2005		Fall 2006		Fall 2007	
Gender	#	%	#	%	#	%	#	%	#	%
Female	115	52.3	148	51.2	187	51.1	231	54.5	241	53.6
Male	105	47.7	141	48.8	179	48.9	193	45.5	209	46.4
Total (Doctoral)	220	100.0	289	100.0	366	100.0	424	100.0	450	100.0

Number of Students Enrolled by Age Category

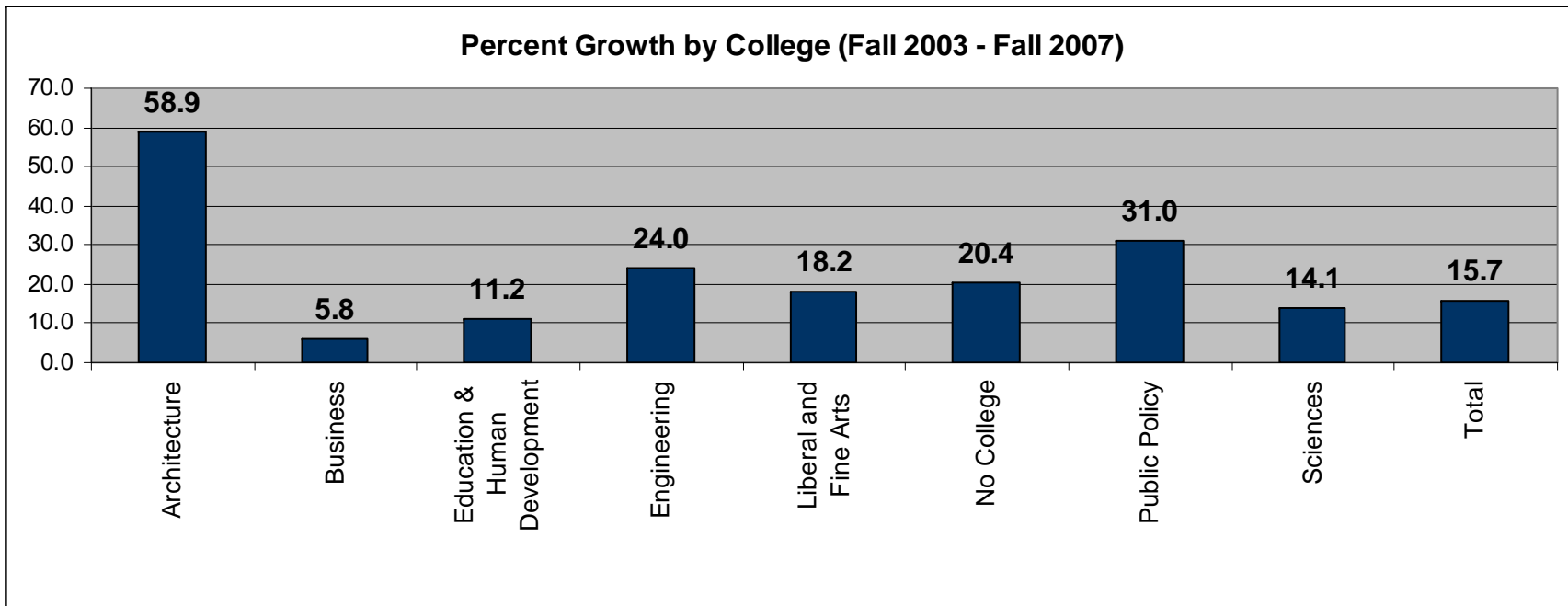
Age Categories	Fall 2003		Fall 2004		Fall 2005		Fall 2006		Fall 2007	
	#	%	#	%	#	%	#	%	#	%
Under 18	244	1.0	282	1.1	283	1.0	538	1.9	553	1.9
18-22	12,566	50.9	13,769	52.6	14,573	53.4	15,674	55.2	16,219	56.8
23-27	5,650	22.9	5,910	22.6	6,191	22.7	6,243	22.0	6,249	21.9
28-32	2,602	10.5	2,621	10.0	2,632	9.6	2,457	8.7	2,312	8.1
33-39	1,760	7.1	1,805	6.9	1,820	6.7	1,768	6.2	1,614	5.7
40-50	1,432	5.8	1,376	5.3	1,400	5.1	1,326	4.7	1,205	4.2
50+	411	1.7	412	1.6	392	1.4	373	1.3	381	1.3
Total	24,665	100.0	26,175	100.0	27,291	100.0	28,379	100.0	28,533	100.0

Semester Credit Hours by Age Category

Age Categories	Fall 2003		Fall 2004		Fall 2005		Fall 2006		Fall 2007	
	SCH	%	SCH	%	SCH	%	SCH	%	SCH	%
Under 18	3,064	1.0	3,389	1.1	3,674	1.0	5,133	1.9	4,605	1.9
18-22	160,762	50.9	174,726	52.6	185,278	53.4	200,846	55.2	208,209	56.8
23-27	56,239	22.9	59,329	22.6	61,656	22.7	62,292	22.0	62,153	21.9
28-32	22,005	10.5	22,287	10.0	22,473	9.6	20,866	8.7	19,767	8.1
33-39	13,791	7.1	14,391	6.9	14,303	6.7	13,829	6.2	12,801	5.7
40-50	10,615	5.8	10,306	5.3	10,371	5.1	9,622	4.7	8,786	4.2
50+	2,566	1.7	2,826	1.6	2,666	1.4	2,467	1.3	2,384	1.3
Total	269,042	100.0	287,254	100.0	300,421	100.0	315,055	100.0	318,705	100.0

Number of Students Enrolled Based on the Fall 2007 College Structure

College	Fall 2003		Fall 2004		Fall 2005		Fall 2006		Fall 2007	
	#	%	#	%	#	%	#	%	#	%
College of Architecture	681	2.8	795	3.0	925	3.4	1,008	3.6	1,082	3.8
College of Business	5,578	22.6	5,786	22.1	5,992	22.0	6,157	21.7	5,902	20.7
College of Education & Human Development	3,971	16.1	4,305	16.4	4,365	16.0	4,490	15.8	4,416	15.5
College of Engineering	1,670	6.8	1,781	6.8	1,827	6.7	1,943	6.8	2,070	7.3
College of Liberal and Fine Arts	5,142	20.8	5,381	20.6	5,694	20.9	5,819	20.5	6,079	21.3
College of Public Policy	839	3.4	873	3.3	996	3.6	1,098	3.9	1,099	3.9
College of Sciences	4,551	18.5	4,853	18.5	5,028	18.4	5,257	18.5	5,192	18.2
No College Identified	2,233	9.1	2,401	9.2	2,464	9.0	2,607	9.2	2,693	9.4
Total	24,665	100.0	26,175	100.0	27,291	100.0	28,379	100.0	28,533	100.0



Semester Credit Hours* Based on the Fall 2007 College Structure

College	Fall 2003		Fall 2004		Fall 2005		Fall 2006		Fall 2007	
	#	%	#	%	#	#	%	#	%	#
College of Architecture	7,877	2.8	9,228	3.0	10,631	3.4	11,834	3.6	12,461	3.8
College of Business	59,897	22.6	61,594	22.1	64,695	22.0	67,906	21.7	65,694	20.7
College of Education & Human Development	38,266	16.1	41,286	16.4	41,424	16.0	43,115	15.8	43,215	15.5
College of Engineering	19,446	6.8	20,457	6.8	20,938	6.7	22,566	6.8	24,183	7.3
College of Liberal and Fine Arts	59,688	20.8	62,065	20.6	66,031	20.9	67,341	20.5	70,815	21.3
College of Public Policy	8,869	3.4	9,160	3.3	10,167	3.6	11,048	3.9	10,922	3.9
College of Sciences	53,926	18.5	56,896	18.5	58,736	18.4	62,185	18.5	62,325	18.2
No College Identified	21,073	9.1	26,568	9.2	27,799	9.0	29,060	9.2	29,090	9.4
Total	269,042	100.0	287,254	100.0	300,421	100.0	315,055	100.0	318,705	100.0

Students Enrolled by Residence Category

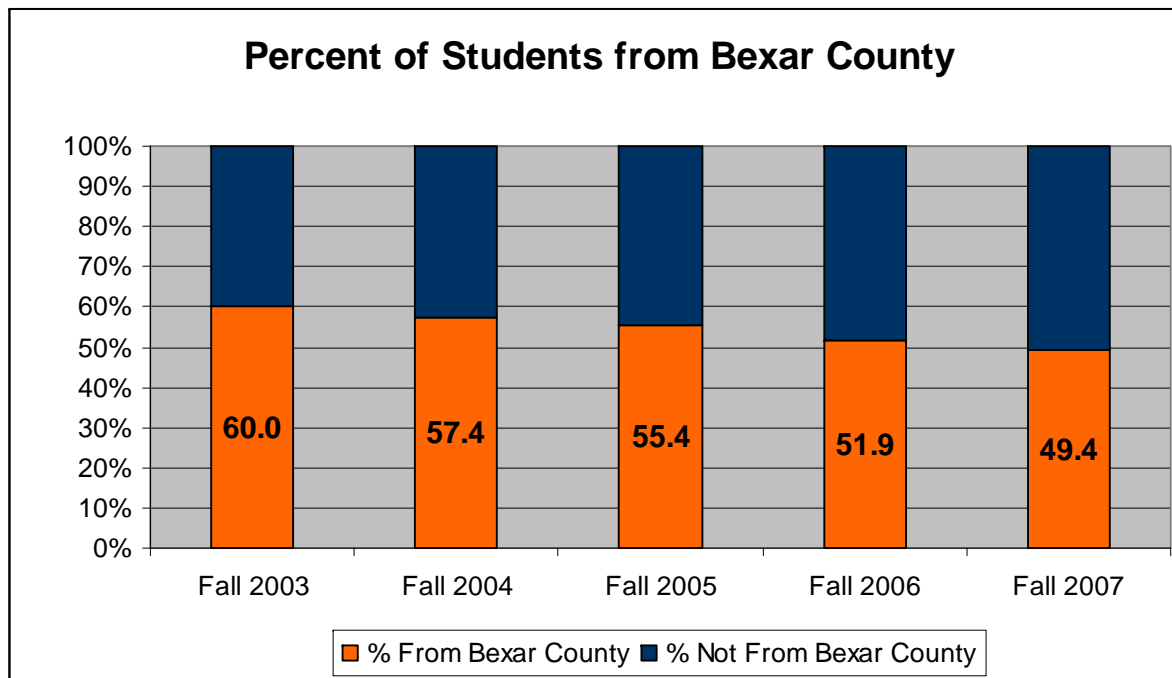
	Fall 2003		Fall 2004		Fall 2005		Fall 2006		Fall 2007	
	#	%	#	%	#	%	#	%	#	%
Bexar County	14,796	60.0	15,021	57.4	15,112	55.4	14,726	51.9	14,096	49.4
Other Texas County	8,692	35.2	9,871	37.7	10,852	39.8	12,210	43.0	12,936	45.3
Other State in U.S.	418	1.7	481	1.8	504	1.8	603	2.1	667	2.3
Student from Outside U.S.	759	3.1	802	3.1	823	3.0	840	3.0	834	2.9
Total	24,665	100.0	26,175	100.0	27,291	100.0	28,379	100.0	28,533	100.0

Students Enrolled by Texas Economic Region

Texas Region	Fall 2003		Fall 2004		Fall 2005		Fall 2006		Fall 2007	
	#	%	#	%	#	%	#	%	#	%
<i>Out of State or International</i>	1,177	4.8	1,283	4.9	1,327	4.9	1,443	5.1	1,501	5.3
Central Texas	1,274	5.2	1,640	6.3	1,820	6.7	2,021	7.1	2,216	7.8
Gulf Coast	1,705	6.9	2,062	7.9	2,485	9.1	3,174	11.2	3,619	12.7
High Plains	67	0.3	87	0.3	90	0.3	98	0.3	95	0.3
Metroplex	317	1.3	384	1.5	422	1.5	597	2.1	670	2.3
Northwest Texas	84	0.3	79	0.3	90	0.3	93	0.3	86	0.3
South Texas	19,483	79.0	19,993	76.4	20,375	74.7	20,194	71.2	19,574	68.6
Southeast Texas	63	0.3	84	0.3	98	0.4	123	0.4	137	0.5
Upper East Texas	47	0.2	55	0.2	61	0.2	66	0.2	68	0.2
Upper Rio Grande	284	1.2	315	1.2	317	1.2	352	1.2	356	1.2
West Texas	164	0.7	193	0.7	206	0.8	218	0.8	211	0.7
Total	24,665	100.0	26,175	100.0	27,291	100.0	28,379	100.0	28,533	100.0

Fall 2007 Enrollment by Top 10 Counties (All Students)

County	Fall 2007	
	#	%
1. Bexar	14,096	49.4
2. Harris	2,056	7.2
3. Travis	1,003	3.5
4. Fort Bend	812	2.8
5. Hidalgo	582	2.0
6. Cameron	564	2.0
7. Webb	551	1.9
8. Williamson	493	1.7
9. Nueces	464	1.6
10. Guadalupe	442	1.5



Fall 2007 College Structure Enrollment by Gender

College of Architecture by Gender

	Fall 2003		Fall 2004		Fall 2005		Fall 2006		Fall 2007	
Gender	#	%	#	%	#	%	#	%	#	%
Female	331	48.6	376	47.3	421	45.5	455	45.1	462	42.7
Male	350	51.4	419	52.7	504	54.5	553	54.9	620	57.3
Total	681	100.0	795	100.0	925	100.0	1008	100.0	1082	100.0

College of Business by Gender

	Fall 2003		Fall 2004		Fall 2005		Fall 2006		Fall 2007	
Gender	#	%	#	%	#	%	#	%	#	%
Female	2,513	45.1	2,543	44.0	2,583	43.1	2,587	42.0	2,377	40.3
Male	3,065	54.9	3,243	56.0	3,409	56.9	3,570	58.0	3,525	59.7
Total	5,578	100.0	5,786	100.0	5,992	100.0	6,157	100.0	5,902	100.0

College of Education and Human Development by Gender

	Fall 2003		Fall 2004		Fall 2005		Fall 2006		Fall 2007	
Gender	#	%	#	%	#	%	#	%	#	%
Female	3,051	76.8	3,320	77.1	3,375	77.3	3,455	76.9	3,380	76.5
Male	920	23.2	985	22.9	990	22.7	1,035	23.1	1,036	23.5
Total	3,971	100.0	4,305	100.0	4,365	100.0	4,490	100.0	4,416	100.0

Fall 2007 College Structure Enrollment by Gender (continued)

College of Engineering by Gender

Gender	Fall 2003		Fall 2004		Fall 2005		Fall 2006		Fall 2007	
	#	%	#	%	#	%	#	%	#	%
Female	236	14.1	264	14.8	249	13.6	269	13.8	265	12.8
Male	1,434	85.9	1,517	85.2	1,578	86.4	1,674	86.2	1,805	87.2
Total	1,670	100.0	1,781	100.0	1,827	100.0	1,943	100.0	2,070	100.0

College of Liberal and Fine Arts by Gender

Gender	Fall 2003		Fall 2004		Fall 2005		Fall 2006		Fall 2007	
	#	%	#	%	#	%	#	%	#	%
Female	3,133	60.9	3,297	61.3	3,440	60.4	3,489	60.0	3,692	60.7
Male	2,009	39.1	2,084	38.7	2,254	39.6	2,330	40.0	2,387	39.3
Total	5,142	100.0	5,381	100.0	5,694	100.0	5,819	100.0	6,079	100.0

College of Public Policy by Gender

Gender	Fall 2003		Fall 2004		Fall 2005		Fall 2006		Fall 2007	
	#	%	#	%	#	%	#	%	#	%
Female	464	55.3	480	55.0	552	55.4	629	57.3	618	56.2
Male	375	44.7	393	45.0	444	44.6	469	42.7	481	43.8
Total	839	100.0	873	100.0	996	100.0	1,098	100.0	1,099	100.0

Fall 2007 College Structure Enrollment by Gender (continued)

College of Sciences by Gender

	Fall 2003		Fall 2004		Fall 2005		Fall 2006		Fall 2007	
Gender	#	%	#	%	#	%	#	%	#	%
Female	2,458	54.0	2,704	55.7	2,758	54.9	2,875	54.7	2,799	53.9
Male	2,093	46.0	2,149	44.3	2,270	45.1	2,382	45.3	2,393	46.1
Total	4,551	100.0	4,853	100.0	5,028	100.0	5,257	100.0	5,192	100.0

No College Identified by Gender

	Fall 2003		Fall 2004		Fall 2005		Fall 2006		Fall 2007	
Gender	#	%	#	%	#	%	#	%	#	%
Female	1,243	55.7	1,246	51.9	1,267	51.4	1,397	53.6	1,349	50.1
Male	990	44.3	1,155	48.1	1,197	48.6	1,210	46.4	1,344	49.9
Total	2,233	100.0	2,401	100.0	2,464	100.0	2,607	100.0	2,693	100.0

Fall 2007 College Structure Enrollment by Ethnicity

College of Architecture by Ethnicity

Ethnicity	Fall 2003		Fall 2004		Fall 2005		Fall 2006		Fall 2007	
	#	%	#	%	#	%	#	%	#	%
White	260	38.2	303	38.1	342	37.0	338	33.5	362	33.5
African American	12	1.8	22	2.8	29	3.1	44	4.4	46	4.3
Hispanic	341	50.1	399	50.2	482	52.1	549	54.5	568	52.5
Asian or Pacific Islander	27	4.0	23	2.9	26	2.8	36	3.6	47	4.3
American Indian or Alaskan Native	2	0.3	5	0.6	4	0.4	6	0.6	5	0.5
International	39	5.7	43	5.4	42	4.5	34	3.4	51	4.7
Unknown	0	0.0	0	0.0	0	0.0	1	0.1	3	0.3
Total	681	100.0	795	100.0	925	100.0	1,008	100.0	1,082	100.0

College of Business by Ethnicity

Ethnicity	Fall 2003		Fall 2004		Fall 2005		Fall 2006		Fall 2007	
	#	%	#	%	#	%	#	%	#	%
White	2,366	42.4	2,414	41.7	2,469	41.2	2,526	41.0	2,465	41.8
African American	299	5.4	306	5.3	368	6.1	419	6.8	420	7.1
Hispanic	2,397	43.0	2,486	43.0	2,506	41.8	2,518	40.9	2,297	38.9
Asian or Pacific Islander	261	4.7	303	5.2	353	5.9	399	6.5	380	6.4
American Indian or Alaskan Native	19	0.3	22	0.4	37	0.6	32	0.5	25	0.4
International	236	4.2	252	4.4	253	4.2	257	4.2	295	5.0
Unknown	0	0.0	3	0.1	6	0.1	6	0.1	20	0.3
Total	5,578	100.0	5,786	100.0	5,992	100.0	6,157	100.0	5,902	100.0

Fall 2007 College Structure Enrollment by Ethnicity (continued)

College of Education and Human Development by Ethnicity

Ethnicity	Fall 2003		Fall 2004		Fall 2005		Fall 2006		Fall 2007	
	#	%	#	%	#	%	#	%	#	%
White	1,627	41.0	1,775	41.2	1,771	40.6	1,817	40.5	1,747	39.6
African American	216	5.4	280	6.5	294	6.7	314	7.0	320	7.2
Hispanic	1,997	50.3	2,105	48.9	2,159	49.5	2,179	48.5	2,163	49.0
Asian or Pacific Islander	86	2.2	94	2.2	88	2.0	106	2.4	116	2.6
American Indian or Alaskan Native	17	0.4	16	0.4	17	0.4	18	0.4	16	0.4
International	28	0.7	35	0.8	32	0.7	37	0.8	38	0.9
Unknown	0	0.0	0	0.0	4	0.1	19	0.4	16	0.4
Total	3,971	100.0	4,305	100.0	4,365	100.0	4,490	100.0	4,416	100.0

College of Engineering by Ethnicity

Ethnicity	Fall 2003		Fall 2004		Fall 2005		Fall 2006		Fall 2007	
	#	%	#	%	#	%	#	%	#	%
White	626	37.5	692	38.9	697	38.1	750	38.6	793	38.3
African American	71	4.3	83	4.7	92	5.0	117	6.0	127	6.1
Hispanic	669	40.1	716	40.2	726	39.7	743	38.2	778	37.6
Asian or Pacific Islander	121	7.2	138	7.7	142	7.8	149	7.7	135	6.5
American Indian or Alaskan Native	7	0.4	6	0.3	6	0.3	6	0.3	7	0.3
International	176	10.5	146	8.2	164	9.0	173	8.9	221	10.7
Unknown	0	0.0	0	0.0	0	0.0	5	0.3	9	0.4
Total	1,670	100.0	1,781	100.0	1,827	100.0	1,943	100.0	2,070	100.0

Fall 2007 College Structure Enrollment by Ethnicity (continued)

College of Liberal and Fine Arts by Ethnicity

Ethnicity	Fall 2003		Fall 2004		Fall 2005		Fall 2006		Fall 2007	
	#	%	#	%	#	%	#	%	#	%
White	2,310	44.9	2,398	44.6	2,438	42.8	2,527	43.4	2,652	43.6
African American	305	5.9	343	6.4	348	6.1	387	6.7	447	7.4
Hispanic	2,236	43.5	2,377	44.2	2,586	45.4	2,551	43.8	2,576	42.4
Asian or Pacific Islander	190	3.7	174	3.2	222	3.9	255	4.4	274	4.5
American Indian or Alaskan Native	42	0.8	41	0.8	34	0.6	38	0.7	34	0.6
International	59	1.1	48	0.9	66	1.2	56	1.0	87	1.4
Unknown	0	0.0	0	0.0	0	0.0	5	0.1	9	0.1
Total	5,142	100.0	5,381	100.0	5,694	100.0	5,819	100.0	6,079	100.0

College of Public Policy by Ethnicity

Ethnicity	Fall 2003		Fall 2004		Fall 2005		Fall 2006		Fall 2007	
	#	%	#	%	#	%	#	%	#	%
White	249	29.7	252	28.9	284	28.5	335	30.5	325	29.6
African American	64	7.6	81	9.3	98	9.8	104	9.5	123	11.2
Hispanic	500	59.6	509	58.3	577	57.9	626	57.0	608	55.3
Asian or Pacific Islander	18	2.1	17	1.9	26	2.6	25	2.3	31	2.8
American Indian or Alaskan Native	4	0.5	8	0.9	4	0.4	1	0.1	3	0.3
International	4	0.5	6	0.7	6	0.6	6	0.5	9	0.8
Unknown	0	0.0	0	0.0	1	0.1	1	0.1	0	0.0
Total	839	100.0	873	100.0	996	100.0	1,098	100.0	1,099	100.0

Fall 2007 College Structure Enrollment by Ethnicity (continued)

College of Sciences by Ethnicity

Ethnicity	Fall 2003		Fall 2004		Fall 2005		Fall 2006		Fall 2007	
	#	%	#	%	#	%	#	%	#	%
White	1,676	36.8	1,801	37.1	1,862	37.0	2,000	38.0	1,976	38.1
African American	267	5.9	291	6.0	347	6.9	393	7.5	397	7.6
Hispanic	2,041	44.8	2,178	44.9	2,154	42.8	2,094	39.8	2,063	39.7
Asian or Pacific Islander	355	7.8	373	7.7	437	8.7	523	9.9	491	9.5
American Indian or Alaskan Native	22	0.5	24	0.5	25	0.5	26	0.5	23	0.4
International	190	4.2	186	3.8	201	4.0	211	4.0	231	4.4
Unknown	0	0.0	0	0.0	2	0.0	10	0.2	11	0.2
Total	4,551	100.0	4,853	100.0	5,028	100.0	5,257	100.0	5,192	100.0

No College Identified by Ethnicity

Ethnicity	Fall 2003		Fall 2004		Fall 2005		Fall 2006		Fall 2007	
	#	%	#	%	#	%	#	%	#	%
White	948	42.5	986	41.1	947	38.4	1,005	38.6	1,031	38.3
African American	133	6.0	190	7.9	240	9.7	251	9.6	291	10.8
Hispanic	1,045	46.8	1,104	46.0	1,133	46.0	1,186	45.5	1,199	44.5
Asian or Pacific Islander	73	3.3	96	4.0	113	4.6	132	5.1	138	5.1
American Indian or Alaskan Native	11	0.5	11	0.5	8	0.3	11	0.4	15	0.6
International	23	1.0	14	0.6	22	0.9	21	0.8	19	0.7
Unknown	0	0.0	0	0.0	1	0.0	1	0.0	0	0.0
Total	2,233	100.0	2,401	100.0	2,464	100.0	2,607	100.0	2,693	100.0

Fall 2007 College Structure Enrollment by Course Load

College of Architecture by Course Load

Course Load	Fall 2003		Fall 2004		Fall 2005		Fall 2006		Fall 2007	
	#	%	#	%	#	%	#	%	#	%
Part Time	148	21.7	173	21.8	216	23.4	205	20.3	236	21.8
Full Time	533	78.3	622	78.2	709	76.6	803	79.7	846	78.2
Total	681	100.0	795	100.0	925	100.0	1,008	100.0	1,082	100.0

College of Business by Course Load

Course Load	Fall 2003		Fall 2004		Fall 2005		Fall 2006		Fall 2007	
	#	%	#	%	#	%	#	%	#	%
Part Time	1,872	33.6	1,981	34.2	1,971	32.9	1,937	31.5	1,748	29.6
Full Time	3,706	66.4	3,805	65.8	4,021	67.1	4,220	68.5	4,154	70.4
Total	5,578	100.0	5,786	100.0	5,992	100.0	6,157	100.0	5,902	100.0

College of Education & Human Development by Course Load

Course Load	Fall 2003		Fall 2004		Fall 2005		Fall 2006		Fall 2007	
	#	%	#	%	#	%	#	%	#	%
Part Time	1,825	46.0	2,012	46.7	2,130	48.8	2,142	47.7	2,021	45.8
Full Time	2,146	54.0	2,293	53.3	2,235	51.2	2,348	52.3	2,395	54.2
Total	3,971	100.0	4,305	100.0	4,365	100.0	4,490	100.0	4,416	100.0

College of Engineering by Course Load

Course Load	Fall 2003		Fall 2004		Fall 2005		Fall 2006		Fall 2007	
	#	%	#	%	#	%	#	%	#	%
Part Time	397	23.8	484	27.2	499	27.3	469	24.1	483	23.3
Full Time	1,273	76.2	1,297	72.8	1,328	72.7	1,474	75.9	1,587	76.7
Total	1,670	100.0	1,781	100.0	1,827	100.0	1,943	100.0	2,070	100.0

Fall 2007 College Structure Enrollment by Course Load (continued)

College of Liberal and Fine Arts by Course Load

	Fall 2003		Fall 2004		Fall 2005		Fall 2006		Fall 2007	
Course Load	#	%	#	%	#	%	#	%	#	%
Part Time	1,398	27.2	1,465	27.2	1,526	26.8	1,542	26.5	1,576	25.9
Full Time	3,744	72.8	3,916	72.8	4,168	73.2	4,277	73.5	4,503	74.1
Total	5,142	100.0	5,381	100.0	5,694	100.0	5,819	100.0	6,079	100.0

College of Public Policy by Course Load

	Fall 2003		Fall 2004		Fall 2005		Fall 2006		Fall 2007	
Course Load	#	%	#	%	#	%	#	%	#	%
Part Time	297	35.4	316	36.2	363	36.4	446	40.6	455	41.4
Full Time	542	64.6	557	63.8	633	63.6	652	59.4	644	58.6
Total	839	100.0	873	100.0	996	100.0	1,098	100.0	1,099	100.0

College of Sciences by Course Load

	Fall 2003		Fall 2004		Fall 2005		Fall 2006		Fall 2007	
Course Load	#	%	#	%	#	%	#	%	#	%
Part Time	1,120	24.6	1,264	26.0	1,341	26.7	1,351	25.7	1,228	23.7
Full Time	3,431	75.4	3,589	74.0	3,687	73.3	3,906	74.3	3,964	76.3
Total	4,551	100.0	4,853	100.0	5,028	100.0	5,257	100.0	5,192	100.0

Fall 2007 College Structure Enrollment by Course Load (continued)

No College Identified by Course Load

	Fall 2003		Fall 2004		Fall 2005		Fall 2006		Fall 2007	
Course Load	#	%	#	%	#	%	#	%	#	%
Part Time	846	37.9	492	20.5	449	18.2	642	24.6	669	24.8
Full Time	1,387	62.1	1,909	79.5	2,015	81.8	1,965	75.4	2,024	75.2
Total	2,233	100.0	2,401	100.0	2,464	100.0	2,607	100.0	2,693	100.0

Fall 2007 College Structure Enrollment by Student Level

College of Architecture by Student Level

	Fall 2003		Fall 2004		Fall 2005		Fall 2006		Fall 2007	
Level	#	%	#	%	#	%	#	%	#	%
Undergraduate	657	96.5	758	95.3	862	93.2	939	93.2	1,009	93.3
Post-Bac	2	0.3	1	0.1	2	0.2	2	0.2	0	0.0
Masters	22	3.2	36	4.5	61	6.6	67	6.6	73	6.7
Doctoral	0	0.0	0	0.0	0	0.0	0	0.0	0	0.0
Total	681	100.0	795	100.0	925	100.0	1,008	100.0	1,082	100.0

College of Business by Student Level

	Fall 2003		Fall 2004		Fall 2005		Fall 2006		Fall 2007	
Level	#	%	#	%	#	%	#	%	#	%
Undergraduate	4,774	85.6	4,918	85.0	5,169	86.3	5,382	87.4	5,155	87.3
Post-Bac	5	0.1	5	0.1	54	0.9	35	0.6	47	0.8
Masters	771	13.8	830	14.3	728	12.1	689	11.2	640	10.8
Doctoral	28	0.5	33	0.6	41	0.7	51	0.8	60	1.0
Total	5,578	100.0	5,786	100.0	5,992	100.0	6,157	100.0	5,902	100.0

Fall 2007 College Structure Enrollment by Student Level (continued)

College of Education & Human Development by Student Level

Level	Fall 2003		Fall 2004		Fall 2005		Fall 2006		Fall 2007	
	#	%	#	%	#	%	#	%	#	%
Undergraduate	2,597	65.4	2,832	65.8	2,964	67.9	3,024	67.3	3,079	69.7
Post-Bac	13	0.3	14	0.3	108	2.5	74	1.6	83	1.9
Masters	1,293	32.6	1,378	32.0	1,193	27.3	1,275	28.4	1,136	25.7
Doctoral	68	1.7	81	1.9	100	2.3	117	2.6	118	2.7
Total	3,971	100.0	4,305	100.0	4,365	100.0	4,490	100.0	4,416	100.0

College of Engineering by Student Level

Level	Fall 2003		Fall 2004		Fall 2005		Fall 2006		Fall 2007	
	#	%	#	%	#	%	#	%	#	%
Undergraduate	1,436	86.0	1,530	85.9	1,578	86.4	1,686	86.8	1,773	85.7
Post-Bac	0	0.0	0	0.0	22	1.2	16	0.8	24	1.2
Masters	187	11.2	180	10.1	135	7.4	150	7.7	188	9.1
Doctoral	47	2.8	71	4.0	92	5.0	91	4.7	85	4.1
Total	1,670	100.0	1,781	100.0	1,827	100.0	1,943	100.0	2,070	100.0

College of Liberal and Fine Arts by Student Level

Level	Fall 2003		Fall 2004		Fall 2005		Fall 2006		Fall 2007	
	#	%	#	%	#	%	#	%	#	%
Undergraduate	4,723	91.9	4,971	92.4	5,237	92.0	5,330	91.6	5,570	91.6
Post-Bac	6	0.1	5	0.1	23	0.4	30	0.5	36	0.6
Masters	404	7.9	385	7.2	409	7.2	425	7.3	430	7.1
Doctoral	9	0.2	20	0.4	25	0.4	34	0.6	43	0.7
Total	5,142	100.0	5,381	100.0	5,694	100.0	5,819	100.0	6,079	100.0

Fall 2007 College Structure Enrollment by Student Level (continued)

College of Public Policy by Student Level

Level	Fall 2003		Fall 2004		Fall 2005		Fall 2006		Fall 2007	
	#	%	#	%	#	%	#	%	#	%
Undergraduate	712	84.9	718	82.2	779	78.2	829	75.5	814	74.1
Post-Bac	0	0.0	0	0.0	4	0.4	3	0.3	3	0.3
Masters	127	15.1	155	17.8	213	21.4	247	22.5	263	23.9
Doctoral	0	0.0	0	0.0	0	0.0	19	1.7	19	1.7
Total	839	100.0	873	100.0	996	100.0	1,098	100.0	1,099	100.0

College of Sciences by Student Level

Level	Fall 2003		Fall 2004		Fall 2005		Fall 2006		Fall 2007	
	#	%	#	%	#	%	#	%	#	%
Undergraduate	4,079	89.6	4,383	90.3	4,551	90.5	4,734	90.1	4,705	90.6
Post-Bac	7	0.2	1	0.0	46	0.9	47	0.9	43	0.8
Masters	397	8.7	385	7.9	323	6.4	364	6.9	319	6.1
Doctoral	68	1.5	84	1.7	108	2.1	112	2.1	125	2.4
Total	4,551	100.0	4,853	100.0	5,028	100.0	5,257	100	5,192	100.0

No College Identified by Student Level

Level	Fall 2003		Fall 2004		Fall 2005		Fall 2006		Fall 2007	
	#	%	#	%	#	%	#	%	#	%
Undergraduate	1,644	73.6	2,149	89.5	2,247	91.2	2,474	94.9	2,600	96.5
Post-Bac	587	26.3	252	10.5	217	8.8	133	5.1	93	3.5
Masters	2	0.1	0	0.0	0	0.0	0	0.0	0	0.0
Doctoral	0	0.0	0	0.0	0	0.0	0	0.0	0	0.0
Total	2,233	100.0	2,401	100.0	2,464	100.0	2,607	100.0	2,693	100.0

Student FTE

The number of Full Time Equivalent (FTE) students can be calculated using various methods. The Coordinating Board uses a different method than IPEDS and the Common Data Set. The Coordinating Board is the official FTE and is used when looking at budgets, however the other methods can be used to divide FTE up by the college in which the student is enrolled in.

Number of Full Time Equivalent Students Using the Coordinating Board* Method

Level	Fall 2003		Fall 2004		Fall 2005		Fall 2006		Fall 2007	
	#	%	#	%	#	%	#	%	#	%
Undergraduate	16,597.1	90.6	17,726.7	90.6	18,611.6	90.8	19,468.8	90.7	19,740.4	90.9
Masters	1,539.4	8.4	1,604.3	8.2	1,592.3	7.8	1,661.8	7.7	1,624.3	7.5
Doctoral	179.1	1.0	233.7	1.2	297.2	1.5	342.3	1.6	345.3	1.6
Total FTE	18,315.7	100.0	19,564.6	100.0	20,501.2	100.0	21,473.0	100.0	21,710.0	100.0

*This method uses the level of the courses students are enrolled in as well as the level of the student to compute the Full Time Equivalent. Undergraduate hours are divided by 15, Masters are divided by 12, and Doctoral hours are divided by 9. For more information please contact the Office of Institutional Research at (210) 458-4706.

Number of Full Time Equivalent Students Using the Common Data Set* (CDS) Method

College	Fall 2003		Fall 2004		Fall 2005		Fall 2006		Fall 2007	
	FTE	%	FTE	%	FTE	%	FTE	%	FTE	%
College of Architecture	582.3	2.8	679.7	3.0	781.0	3.4	871.3	3.6	924.7	3.8
College of Business	4,330.0	22.6	4,465.3	22.1	4,678.0	22.0	4,865.7	21.7	4,736.7	20.7
College of Education and Human Development	2,754.3	16.1	2,963.7	16.4	2,945.0	16.0	3,062.0	15.8	3,068.7	15.5
College of Engineering	1,405.3	6.8	1,458.3	6.8	1,494.3	6.7	1,630.3	6.8	1,748.0	7.3
College of Liberal and Fine Arts	4,210.0	20.8	4,404.3	20.6	4,676.7	20.9	4,791.0	20.5	5,028.3	21.3
College of Public Policy	1,669.0	9.1	2,073.0	9.2	2,164.7	9.0	2,179.0	9.2	2,247.0	9.4
College of Sciences	641.0	3.4	662.3	3.3	754.0	3.6	800.7	3.9	795.7	3.9
No College Identified	3,804.3	18.5	4,010.3	18.5	4,134.0	18.4	4,356.3	18.5	4,373.3	18.2
Total	19,396.3	100.0	20,717.0	100.0	21,627.7	100.0	22,556.3	100.0	22,922.3	100.0

*CDS method is to take all of the full time students and add 1/3 of the part time students to get the FTE

New Student Information and Success

The Applied, Accepted, and Enrolled information comes from the Coordinating Board Admissions file (CBM00B), this file contains only the Summer and Fall applications for each year. Only students who have never applied at the level are included in this information. The new students (first time and transfer) come from the Coordinating Board Admissions file (CBM00B) and are included here if they were a new student in the Summer or the Fall. Note that although many new students enter UTSA each year only students who are first time students seeking a degree at UTSA are included in the Cohort for graduation and retention information. This information is located in the “*First Time Full Time Cohort Information*” section. For more information on this topic please contact the Office of Institutional Research at (210) 458-4706

First Time Undergraduates Applied, Accepted, and Enrolled (Summer and Fall Applications Included)

	Fall 2003	Fall 2004	Fall 2005	Fall 2006	Fall 2007
Applied	9,685	10,331	9,149	11,145	10,929
Accepted	9,618	10,260	9,092	10,122	10,163
% Accepted	99.3	99.3	99.4	90.8	93.0
Enrolled*	4,732	4,840	4,456	4,775	4,837
% Enrolled of Accepted	49.2	47.2	49.0	47.2	47.6

*Students may have enrolled as a transfer student if hours came in after application

First Time Full Time Undergraduate Information

First Time Full Time Undergraduates by Gender

Gender	Fall 2003		Fall 2004		Fall 2005		Fall 2006		Fall 2007	
	#	%	#	%	#	%	#	%	#	%
Female	2,076	50.2	2,141	50.4	2,241	51.3	2,395	51.0	2,310	47.8
Male	2,056	49.8	2,105	49.6	2,126	48.7	2,299	49.0	2,526	52.2
Total	4,132	100.0	4,246	100.0	4,367	100.0	4,694	100.0	4,836	100.0

First Time Full Time Undergraduates by Ethnicity

Ethnicity	Fall 2003		Fall 2004		Fall 2005		Fall 2006		Fall 2007	
	#	%	#	%	#	%	#	%	#	%
White-Non-Hispanic	1,715	41.5	1,746	41.1	1,739	39.8	2,057	43.8	2,044	42.3
Black-Non-Hispanic	243	5.9	329	7.7	360	8.2	433	9.2	443	9.2
Hispanic	1,748	42.3	1,767	41.6	1,755	40.2	1,638	34.9	1,767	36.5
Asian or Pacific Islander	332	8.0	312	7.3	402	9.2	465	9.9	432	8.9
American Indian or Alaskan Native	29	0.7	30	0.7	30	0.7	30	0.6	27	0.6
International	65	1.6	62	1.5	81	1.9	67	1.4	123	2.5
Unknown or Not Reported	0	0.0	0	0.0	0	0.0	4	0.1	0	0.0
Total	4,132	100.0	4,246	100.0	4,367	100.0	4,694	100.0	4,836	100.0

First Time Full Time Undergraduate Information (continued)

High School Rank of First Time Full Time Undergraduates

Reported High School Rank	Fall 2003		Fall 2004		Fall 2005		Fall 2006		Fall 2007	
	#	%	#	%	#	%	#	%	#	%
Top 10%	378	10.0	365	9.0	383	9.2	362	8.2	335	7.3
Top 11 – 25%*	1,117	29.5	1,043	25.7	1,066	25.7	1,145	26.0	1,093	24.0
Second Quarter	1,334	35.2	1,472	36.3	1,490	35.9	1,548	35.1	1,664	36.5
Percent in Top Half	2,829	74.7	2,880	71.0	2,939	70.9	3,055	69.3	3,092	67.8
Percent in Bottom Half	957	25.3	1,176	29.0	1,209	29.1	1,356	30.7	1,466	32.2
Third Quarter	680	18.0	896	22.1	897	21.6	1,005	22.8	1,109	24.3
Fourth Quarter	277	7.3	280	6.9	312	7.5	351	8.0	357	7.8
Total Reported	3,786	100.0	4,056	100.0	4,148	100.0	4,411	100.0	4,558	100.0

First Time Full Time Undergraduates by Admission Category

Student Category	Fall 2003		Fall 2004		Fall 2005		Fall 2006		Fall 2007	
	#	%	#	%	#	%	#	%	#	%
Regular Admit	2,919	70.6	3,003	70.7	3,032	69.4	3,190	68.0	3,358	69.4
Provisional Admit	80	1.9	453	10.7	443	10.1	439	9.4	506	10.5
UT Austin CAP Students	1,133	27.4	790	18.6	892	20.4	1,065	22.7	972	20.1
Total	4,132	100.0	4,246	100.0	4,367	100.0	4,694	100.0	4,836	100.0

First Time Full Time Undergraduate Information (continued)

Mean SAT Scores and Number of Scores Reported by Admission Category

	Fall 2003		Fall 2004		Fall 2005		Fall 2006		Fall 2007	
	Mean	#	Mean	#	Mean	#	Mean	#	Mean	#
Regular Admit	998	2,491	1009	2,574	1023	2,588	1016	2,732	1,013	2870
Provisional Admit	802	72	792	395	814	386	818	398	818	438
UT Austin CAP Students	1101	1,089	1102	753	1117	845	1117	1,025	1,111	937
Total	1025	3,652	1005	3,722	1023	3,819	1022	4,155	1,015	4245

25th and 75th Percentile Total SAT Scores by Admission Category

	Fall 2003		Fall 2004		Fall 2005		Fall 2006		Fall 2007	
	25th	75th	25th	75th	25th	75th	25th	75th	25th	75th
Regular Admit	910	1080	920	1090	940	1100	930	1090	930	1090
Provisional Admit	750	850	750	850	760	860	770	870	770	870
UT Austin CAP Students	1010	1200	1010	1200	1030	1200	1030	1210	1020	1200
Total	920	1130	910	1110	920	1120	920	1120	910	1110

Mean SAT Verbal Scores and Number of Scores Reported by Admission Category

	Fall 2003		Fall 2004		Fall 2005		Fall 2006		Fall 2007	
	Mean	#	Mean	#	Mean	#	Mean	#	Mean	#
Regular Admit	497	2488	502	2567	507	2583	501	2731	499	2870
Provisional Admit	402	73	397	394	407	386	403	398	405	438
UT Austin CAP Students	543	1089	545	752	550	843	546	1025	541	937
Total	509	3650	500	3713	506	3812	502	4154	498	4245

First Time Full Time Undergraduate Information (continued)

25th and 75th Percentile SAT Verbal Scores by Admission Category

	Fall 2003		Fall 2004		Fall 2005		Fall 2006		Fall 2007	
	25th	75th	25th	75th	25th	75th	25th	75th	25th	75th
Reported SAT Verbal (Percentile)										
Regular Admit	445	540	450	550	450	550	450	550	450	540
Provisional admit	370	430	370	430	370	440	370	430	380	440
UT Austin CAP Students	490	600	490	600	490	600	490	600	490	590
Total	450	560	440	550	450	560	450	560	440	550

Mean SAT Math Scores and Number of Scores Reported by Admission Category

	Fall 2003		Fall 2004		Fall 2005		Fall 2006		Fall 2007	
	Mean	#	Mean	#	Mean	#	Mean	#	Mean	#
Reported SAT Math (Mean)										
Regular Admit	501	2490	506	2568	516	2585	515	2731	515	2870
Provisional Admit	397	73	396	393	408	386	415	398	413	438
UT Austin CAP Students	558	1089	558	752	567	845	571	1025	570	937
Total	516	3652	505	3713	516	3816	520	4154	517	4245

25th and 75th Percentile SAT Math Scores by Admission Category

	Fall 2003		Fall 2004		Fall 2005		Fall 2006		Fall 2007	
	25th	75th	25th	75th	25th	75th	25th	75th	25th	75th
Reported SAT Math (Percentile)										
Regular Admit	450	550	460	550	470	560	460	560	460	560
Provisional Admit	370	430	370	430	380	440	380	450	380	450
UT Austin CAP Students	500	620	510	610	520	620	520	620	520	620
Total	460	570	450	560	460	570	460	580	460	570

First Time Full Time Undergraduate Information (continued)

Mean ACT Scores and Number of Scores Reported by Admission Category

	Fall 2003		Fall 2004		Fall 2005		Fall 2006		Fall 2007	
	Mean	#	Mean	#	Mean	#	Mean	#	Mean	#
Regular Admit	20	1153	20	1141	21	1151	21	1165	21	1251
Provisional Admit	15	36	16	212	16	199	16	172	16	196
UT Austin CAP Students	23	439	22	276	22	347	23	406	23	369
Total	21	1628	20	1629	20	1697	21	1743	21	1816

25th and 75th Percentile ACT Scores by Admission Category

	Fall 2003		Fall 2004		Fall 2005		Fall 2006		Fall 2007	
	25th	75th	25th	75th	25th	75th	25th	75th	25th	75th
Regular Admit	18	22	18	22	19	22	19	22	19	23
Provisional Admit	14	17	15	17	15	17	15	17	15	18
UT Austin CAP Students	20	25	20	25	20	25	21	25	21	26
Total	18	23	18	22	18	23	18	23	18	23

Full Time Transfer Undergraduate Information

Full Time Transfer Undergraduate Students by Gender

Gender	Fall 2003		Fall 2004		Fall 2005		Fall 2006		Fall 2007	
	#	%	#	%	#	%	#	%	#	%
Female	1,067	55.9	1,076	53.3	977	53.0	1,031	54.6	999	52.4
Male	841	44.1	942	46.7	867	47.0	856	45.4	907	47.6
Total	1,908	100.0	2,018	100.0	1,844	100.0	1,887	100.0	1,906	100.0

Full Time First Time Transfer Undergraduate Students by Ethnicity

Ethnicity	Fall 2003		Fall 2004		Fall 2005		Fall 2006		Fall 2007	
	#	%	#	%	#	%	#	%	#	%
White-Non-Hispanic	808	42.3	858	42.5	764	41.4	792	42.0	773	40.6
Black-Non-Hispanic	109	5.7	140	6.9	138	7.5	135	7.2	113	5.9
Hispanic	858	45.0	881	43.7	807	43.8	826	43.8	885	46.4
Asian or Pacific Islander	67	3.5	78	3.9	70	3.8	86	4.6	74	3.9
American Indian or Alaskan Native	16	0.8	7	0.3	9	0.5	15	0.8	12	0.6
International	50	2.6	54	2.7	55	3.0	33	1.7	49	2.6
Unknown or Not Reported	0	0.0	0	0.0	1	0.1	0	0.0	0	0.0
Total	1,908	100.0	2,018	100.0	1,844	100.0	1,887	100.0	1,906	100.0

Full Time First Time Transfer Undergraduate Students by Classification

Classification	Fall 2003		Fall 2004		Fall 2005		Fall 2006		Fall 2007	
	#	%	#	%	#	%	#	%	#	%
Freshmen	326	17.1	345	17.1	257	13.9	317	16.8	368	19.3
Sophomores	783	41.0	793	39.3	734	39.8	765	40.5	717	37.6
Juniors	595	31.2	675	33.4	688	37.3	658	34.9	647	33.9
Seniors	204	10.7	205	10.2	165	8.9	147	7.8	174	9.1
Total	1,908	100.0	2,018	100.0	1,844	100.0	1,887	100.0	1,906	100.0

First Time and Transfer Part Time Undergraduate Information

First Time Part Time Undergraduates by Gender

Gender	Fall 2003		Fall 2004		Fall 2005		Fall 2006		Fall 2007	
	#	%	#	%	#	%	#	%	#	%
Female	78	56.5	90	51.4	68	59.1	42	47.2	45	48.9
Male	60	43.5	85	48.6	47	40.9	47	52.8	47	51.1
Total	138	100.0	175	100.0	115	100.0	89	100.0	92	100.0

First Time Part Time Undergraduates by Ethnicity

Ethnicity	Fall 2003		Fall 2004		Fall 2005		Fall 2006		Fall 2007	
	#	%	#	%	#	%	#	%	#	%
White-Non-Hispanic	84	60.9	109	62.3	71	61.7	45	50.6	43	46.7
Black-Non-Hispanic	2	1.4	10	5.7	5	4.3	8	9.0	4	4.3
Hispanic	43	31.2	45	25.7	34	29.6	30	33.7	36	39.1
Asian or Pacific Islander	9	6.5	10	5.7	4	3.5	4	4.5	4	4.3
American Indian or Alaskan Native	0	0.0	0	0.0	0	0.0	1	1.1	0	0.0
International	0	0.0	1	0.6	1	0.9	0	0.0	5	5.4
Unknown or Not Reported	0	0.0	0	0.0	0	0.0	1	1.1	0	0.0
Total	138	100.0	175	100.0	115	100.0	89	100.0	92	100.0

Part Time Transfer Undergraduates

Gender	Fall 2003		Fall 2004		Fall 2005		Fall 2006		Fall 2007	
	#	%	#	%	#	%	#	%	#	%
Female	392	56.3	453	59.7	405	56.2	411	54.4	384	59.3
Male	304	43.7	306	40.3	316	43.8	345	45.6	264	40.7
Total	696	100.0	759	100.0	721	100.0	756	100.0	648	100.0

Part Time Transfer Undergraduates by Ethnicity

Ethnicity	Fall 2003		Fall 2004		Fall 2005		Fall 2006		Fall 2007	
	#	%	#	%	#	%	#	%	#	%
White-Non-Hispanic	281	40.4	318	41.9	265	36.8	283	37.4	241	37.2
Black-Non-Hispanic	38	5.5	51	6.7	55	7.6	45	6.0	37	5.7
Hispanic	341	49.0	359	47.3	362	50.2	390	51.6	337	52.0
Asian or Pacific Islander	30	4.3	21	2.8	29	4.0	32	4.2	23	3.5
American Indian or Alaskan Native	3	0.4	5	0.7	4	0.6	1	0.1	0	0.0
International	3	0.4	5	0.7	6	0.8	5	0.7	10	1.5
Unknown or Not Reported	0	0.0	0	0.0	0	0.0	0	0.0	0	0.0
Total	696	100.0	759	100.0	721	100.0	756	100.0	648	100.0

Part Time Transfer Undergraduates by Classification

Classification	Fall 2003		Fall 2004		Fall 2005		Fall 2006		Fall 2007	
	#	%	#	%	#	%	#	%	#	%
Freshmen	85	12.2	76	10.0	45	6.2	59	7.8	51	7.9
Sophomores	238	34.2	259	34.1	271	37.6	263	34.8	213	32.9
Juniors	225	32.3	293	38.6	281	39.0	305	40.3	273	42.1
Seniors	148	21.3	131	17.3	124	17.2	129	17.1	111	17.1
Total	696	100.0	759	100.0	721	100.0	756	100.0	648	100.0

UTSA First Time Full Time Cohort Information

This section includes only students who are seeking a degree from UTSA, this excludes the students who are part of the Coordinated Admissions Program with the University of Texas at Austin and other students who do not plan to get a degree from UTSA. Students who are now deceased are eliminated from the cohort for graduation and retention purposes. For more information on this topic please contact the Office of Institutional Research at (210) 458-4706.

First Time Full Time Undergraduate Cohort by Gender (students seeking degrees at UTSA)

Gender	Fall 2003		Fall 2004		Fall 2005		Fall 2006		Fall 2007	
	#	%	#	%	#	%	#	%	#	%
Female	1,524	51.24	1,753	50.99	1,767	51.13	1,853	51.52	1,842	48.0
Male	1,450	48.76	1,685	49.01	1,689	48.87	1,744	48.48	1,996	52.0
Total	2,974	100.00	3,438	100.00	3,456	100.00	3,597	100.00	3,838	100.0

First Time Full Time Undergraduate Cohort by Ethnicity (students seeking degrees at UTSA)

Ethnicity	Fall 2003		Fall 2004		Fall 2005		Fall 2006		Fall 2007	
	#	%	#	%	#	%	#	%	#	%
White-Non-Hispanic	1,146	38.53	1,371	39.88	1,366	39.5	1,527	42.5	1,556	40.5
Black-Non-Hispanic	192	6.46	285	8.29	309	8.9	364	10.1	376	9.8
Hispanic	1,419	47.71	1,536	44.68	1,497	43.3	1,406	39.1	1,550	40.4
Asian or Pacific Islander	147	4.94	174	5.06	201	5.8	223	6.2	243	6.3
American Indian or Alaskan Native	19	0.64	23	0.67	23	0.7	26	0.7	22	0.6
International	51	1.71	49	1.43	58	1.7	50	1.4	91	2.4
Unknown	0	0.00	0	0.00	0	0.0	1	0.0	0	0.0
Total	2,974	100.00	3,438	100.00	3,454	100.0	3,597	100.0	3,838	100.0

SAT and ACT Scores

First Time Full Time Undergraduate Cohort SAT Total (students seeking degrees at UTSA)

	Fall 2003		Fall 2004		Fall 2005		Fall 2006		Fall 2007	
Reported SAT Total (Mean)	Mean	#	Mean	#	Mean	#	Mean	#	Mean	#
Regular Admit	998	2,470	1,009	2,553	1,023	2,573	1,016	2,705	1014	2,847
Provisional Admit	802	72	793	394	814	386	818	398	818	438
Total	993	2,542	980	2,947	996	2,959	991	3,103	988	3,285

First Time Full Time Undergraduate Cohort SAT Total (students seeking degrees at UTSA)

	Fall 2003		Fall 2004		Fall 2005		Fall 2006		Fall 2007	
Reported SAT Total (Percentile)	25th	75th	25th	75th	25th	75th	25th	75th	25th	75th
Regular Admit	910	1080	920	1090	940	1100	930	1090	930	1090
Provisional Admit	750	850	750	850	760	860	770	870	770	870
Total	900	1080	890	1070	900	1090	900	1080	890	1070

First Time Full Time Undergraduate Cohort SAT Verbal (students seeking degrees at UTSA)

	Fall 2003		Fall 2004		Fall 2005		Fall 2006		Fall 2007	
Reported SAT Verbal (Mean)	Mean	#	Mean	#	Mean	#	Mean	#	Mean	#
Regular Admit	497	2,470	502	2,553	507	2,573	501	2,705	499	2,847
Provisional Admit	404	72	396	394	407	386	403	398	405	438
Total	494	2,542	488	2,947	494	2,959	488	3,103	486	3,285

First Time Full Time Undergraduate Cohort SAT Verbal (students seeking degrees at UTSA)

	Fall 2003		Fall 2004		Fall 2005		Fall 2006		Fall 2007	
Reported SAT Verbal (Percentile)	25th	75th	25th	75th	25th	75th	25th	75th	25th	75th
Regular Admit	450	540	450	550	450	550	450	550	450	540
Provisional Admit	370	435	360	430	370	440	370	430	380	440
Total	440	540	430	540	440	550	430	540	430	530

First Time Full Time Undergraduate Cohort SAT Math (students seeking degrees at UTSA)

	Fall 2003		Fall 2004		Fall 2005		Fall 2006		Fall 2007	
	Mean	#	Mean	#	Mean	#	Mean	#	Mean	#
Reported SAT Math (Mean)										
Regular Admit	501	2,470	506	2,553	516	2,573	516	2,705	515	2,847
Provisional Admit	398	72	396	394	408	386	415	398	413	438
Total	498	2,542	492	2,947	502	2,959	503	3,103	501	3,285

First Time Full Time Undergraduate Cohort SAT Math (students seeking degrees at UTSA)

	Fall 2003		Fall 2004		Fall 2005		Fall 2006		Fall 2007	
	25th	75th	25th	75th	25th	75th	25th	75th	25th	75th
Reported SAT Math (Percentile)										
Regular Admit	450	550	460	550	470	560	460	560	460	560
Provisional Admit	370	430	370	430	380	440	380	450	380	450
Total	450	550	440	540	450	550	450	550	450	550

First Time Full Time Undergraduate Cohort ACT Composite (students seeking degrees at UTSA)

	Fall 2003		Fall 2004		Fall 2005		Fall 2006		Fall 2007	
	Mean	#	Mean	#	Mean	#	Mean	#	Mean	#
Reported ACT Composite (Mean)										
Regular Admit	20	1,133	20	1,125	21	1,138	21	1,143	21	1,240
Provisional Admit	15	36	16	212	16	198	16	172	16	196
Total	20	1,169	20	1,337	20	1,336	20	1,315	20	1,436

First Time Full Time Undergraduate Cohort ACT Composite (students seeking degrees at UTSA)

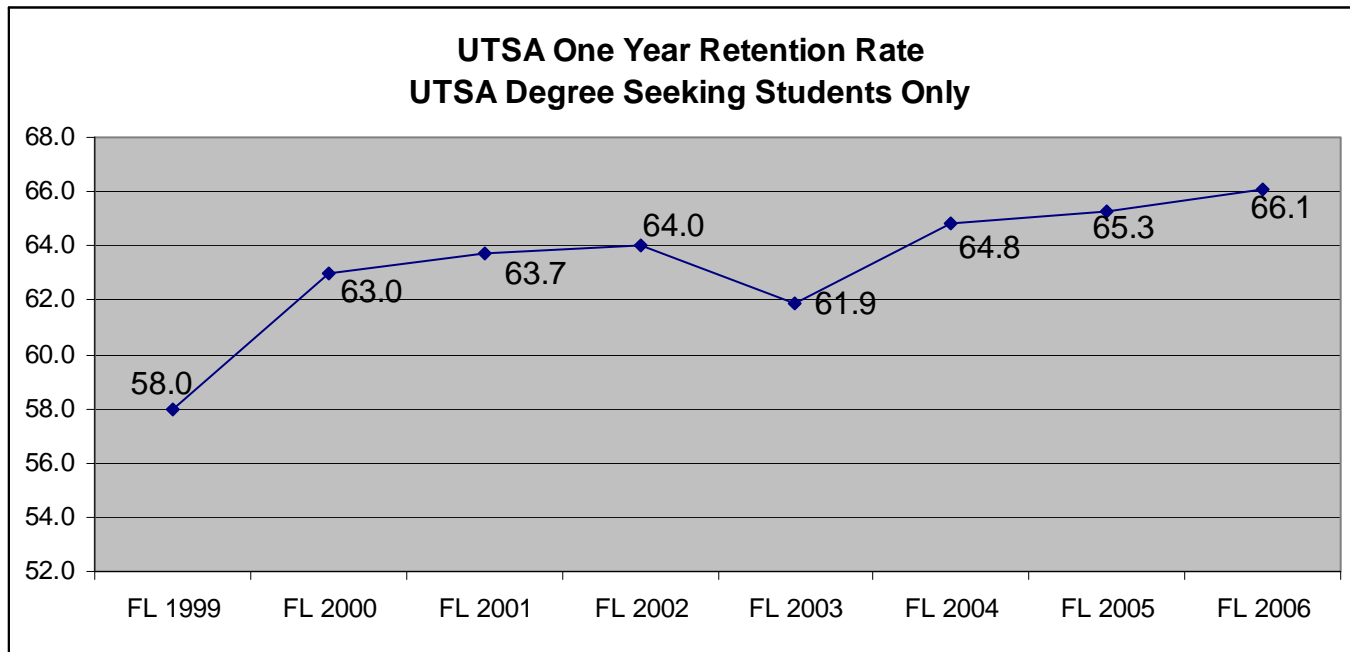
	Fall 2003		Fall 2004		Fall 2005		Fall 2006		Fall 2007	
	25th	75th	25th	75th	25th	75th	25th	75th	25th	75th
Reported ACT Composite (Percentile)										
Regular Admit	18	22	18	22	19	22	19	22	19	23
Provisional Admit	14	17	15	17	15	17	15	17	15	18
Total	18	22	17	22	18	22	18	22	18	22

Retention and Graduation in UTSA Degree Seeking Cohort*

Percent of Students in Cohort who were Retained or Graduated by Year (All)

All Students Cohort Year	# in Cohort	Percent Retained			Percent Graduated		
		One Year	Two Years	Three Years	Four Years	Five Years	Six Years
1999	1,654	58.0	47.2	42.6	6.3	22.1	30.0
2000	1,719	63.0	47.5	42.0	7.0	21.0	28.2
2001	1,677	63.7	48.4	44.3	7.6	22.9	31.3
2002	2,486	64.0	49.6	42.8	8.7	22.4	
2003	2,968	61.9	48.7	43.4	8.7		
2004	3,432	64.8	48.7	40.8			
2005	3,450	65.3	46.9				
2006	3,597	66.1					

* Students who are deceased at the time of publication have been removed from the cohort.



Percent of Students in Cohort who were Retained or Graduated by Year (Men)

Men Only		Percent Retained			Percent Graduated		
Cohort Year	# in Cohort	One Year	Two Years	Three Years	Four Years	Five Years	Six Years
1999	779	51.0	41.8	38.8	4.1	16.3	24.4
2000	830	60.5	48.1	40.4	5.7	18.6	25.2
2001	807	64.9	49.7	45.4	6.8	20.7	30.2
2002	1117	63.0	48.3	41.3	6.4	18.1	
2003	1447	59.8	46.2	41.5	6.2		
2004	1681	63.7	47.1	39.7			
2005	1685	65.5	47.2				
2006	1744	65.1					

Percent of Students in Cohort who were Retained or Graduated by Year (Women)

Women Only		Percent Retained			Percent Graduated		
Cohort Year	# in Cohort	One Year	Two Years	Three Years	Four Years	Five Years	Six Years
1999	875	64.3	51.9	45.9	8.3	27.2	35.1
2000	889	65.4	47.0	43.5	8.2	23.3	31.0
2001	870	62.5	47.1	43.3	8.4	24.9	32.3
2002	1369	64.7	50.7	44.0	10.6	25.9	
2003	1521	63.8	51.0	45.2	11.2		
2004	1751	65.8	50.2	41.8			
2005	1765	65.1	46.5				
2006	1853	67.1					

Percent of Students in Cohort who were Retained or Graduated by Year (White)

White		Percent Retained			Percent Graduated		
Cohort Year	# in Cohort	One Year	Two Years	Three Years	Four Years	Five Years	Six Years
1999	611	55.3	43.0	38.0	6.1	19.5	27.2
2000	708	63.0	45.5	40.0	7.8	21.8	29.0
2001	650	59.7	43.5	40.6	8.6	22.9	29.1
2002	923	61.5	45.8	38.4	10.3	22.0	
2003	1145	58.4	43.1	39.2	8.1		
2004	1369	61.4	45.9	38.5			
2005	1363	63.3	43.4				
2006	1527	62.8					

Percent of Students in Cohort who were Retained or Graduated by Year (African American)

African American		Percent Retained			Percent Graduated		
Cohort Year	# in Cohort	One Year	Two Years	Three Years	Four Years	Five Years	Six Years
1999	124	54.8	45.2	41.9	8.9	22.6	30.6
2000	120	60.0	40.8	39.2	7.5	20.0	22.5
2001	113	65.5	45.1	38.9	11.5	21.2	26.5
2002	146	70.5	58.2	48.6	4.8	21.2	
2003	191	62.8	51.3	39.8	8.9		
2004	284	73.6	52.1	45.4			
2005	309	65.4	46.6				
2006	364	75.0					

Percent of Students in Cohort who were Retained or Graduated by Year (Hispanic)

Hispanic		Percent Retained			Percent Graduated		
Cohort Year	# in Cohort	One Year	Two Years	Three Years	Four Years	Five Years	Six Years
1999	808	59.0	49.4	45.5	5.8	23.0	31.3
2000	816	63.4	49.8	43.4	5.8	19.7	28.2
2001	799	65.0	50.8	46.8	5.3	21.8	32.2
2002	1237	63.1	49.2	43.7	6.8	21.4	
2003	1415	63.0	51.1	45.2	8.2		
2004	1533	65.8	49.6	40.7			
2005	1496	66.4	49.1				
2006	1406	66.9					

Percent of Students in Cohort who were Retained or Graduated by Year (Other)

Other Races		Percent Retained			Percent Graduated		
Cohort Year	# in Cohort	One Year	Two Years	Three Years	Four Years	Five Years	Six Years
1999	111	69.4	55.9	46.8	9.0	28.8	36.0
2000	75	64.0	53.3	50.7	12.0	29.3	30.7
2001	115	75.7	61.7	53.0	14.8	32.2	42.6
2002	180	76.7	65.6	53.9	16.7	31.7	
2003	217	71.9	59.4	57.1	15.2		
2004	246	67.5	54.5	48.4			
2005	282	68.8	52.1				
2006	300	68.7					

Degrees Awarded by Year

This information is based on the Coordinating Board Graduation Report (CBM009) which is certified by the state. The College information is based on the Fall 2007 College Structure and the data is provided for the full academic year from Fall (FL) to Summer (SU). One item to note here is that in the Fall 2004 – Summer 2005 there was one graduate certificate awarded, however it is not included in this report. For more information regarding this topic please contact the Office of Institutional Research at (210) 458-4706

Degrees Awarded by College Based on the Fall 2007 College Structure

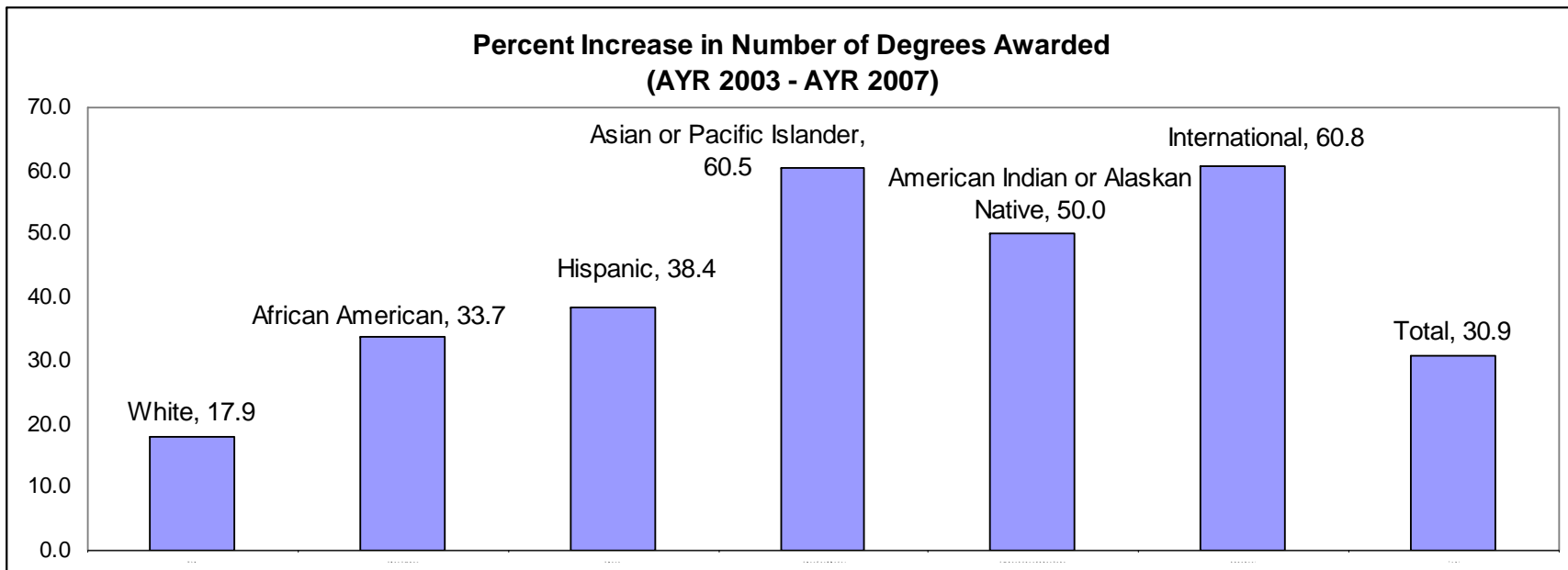
College	FL02 – SU03		FL03 – SU04		FL04 – SU05		FL05 – SU06		FL06 – SU07	
	#	%	#	%	#	%	#	%	#	%
College of Architecture	40	1.1	54	1.5	71	1.7	126	2.9	135	2.9
College of Business	1,010	28.7	1,121	30.4	1,245	29.8	1,274	29.0	1,279	27.8
College of Education and Human Development	753	21.4	708	19.2	894	21.4	991	22.6	1,029	22.3
College of Engineering	183	5.2	221	6.0	202	4.8	222	5.1	243	5.3
College of Liberal and Fine Arts	869	24.7	932	25.3	1,046	25.0	1,042	23.7	1,078	23.4
College of Public Policy	204	5.8	219	5.9	221	5.3	200	4.6	243	5.3
College of Sciences	461	13.1	431	11.7	501	12.0	533	12.1	600	13.0
Total	3,520	100.0	3,686	100.0	4,180	100.0	4,388	100.0	4,607	100.0

Degrees Awarded by Level and Ethnicity

Level	Ethnicity	FL02 - SU03		FL03-SU04		FL04 - SU05		FL05 - SU06		FL 06 – SU07	
		#	%	#	%	#	%	#	%		
Bachelors	White	1204	41.9	1160	39.8	1349	41.2	1402	40.1	1391	38.1
	African American	157	5.5	162	5.6	205	6.3	172	4.9	193	5.3
	Hispanic	1350	47.0	1387	47.6	1528	46.7	1671	47.9	1787	49.0
	Asian or Pacific Islander	106	3.7	116	4.0	120	3.7	139	4.0	160	4.4
	American Indian or Alaskan Native	11	0.4	9	0.3	16	0.5	20	0.6	20	0.5
	International	45	1.6	78	2.7	54	1.7	88	2.5	98	2.7
	Unknown	0	0.0	0	0.0	0	0.0	0	0.0	0	0.0
	Total	2873	100.0	2912	100.0	3272	100.0	3492	100.0	3649	100.0
Masters	White	325	50.7	348	45.3	398	44.5	394	45.4	398	43.7
	African American	18	2.8	37	4.8	34	3.8	35	4.0	40	4.4
	Hispanic	198	30.9	255	33.2	331	37.0	313	36.1	347	38.1
	Asian or Pacific Islander	18	2.8	26	3.4	21	2.3	43	5.0	38	4.2
	American Indian or Alaskan Native	3	0.5	4	0.5	0	0.0	5	0.6	1	0.1
	International	79	12.3	99	12.9	110	12.3	76	8.8	85	9.3
	Unknown	0	0.0	0	0.0	1	0.1	1	0.1	1	0.1
	Total	641	100.0	769	100.0	895	100.0	867	100.0	910	100.0
Doctoral	White	4	66.7	0	0.0	10	76.9	11	37.9	18	37.5
	African American	0	0.0	1	20.0	0	0.0	0	0.0	1	2.1
	Hispanic	1	16.7	2	40.0	2	15.4	7	24.1	10	20.8
	Asian or Pacific Islander	0	0.0	1	20.0	0	0.0	4	13.8	1	2.1
	American Indian or Alaskan Native	0	0.0	0	0.0	0	0.0	0	0.0	0	0.0
	International	1	16.7	1	20.0	1	7.7	7	24.1	18	37.5
	Unknown	0	0.0	0	0.0	0	0.0	0	0.0	0	0.0
	Total	6	100.0	5	100.0	13	100.0	29	100.0	48	100.0

All Degrees Awarded by Ethnicity

Level	Ethnicity	FL 02 - SU03		FL03 - SU04		FL04-SU05		FL05 - SU06		FL06 - SU07	
		#	%	#	%	#	%	#	%	#	%
Total	White	1533	43.6	1508	40.9	1757	42.0	1807	41.2	1807	39.2
	African American	175	5.0	200	5.4	239	5.7	207	4.7	234	5.1
	Hispanic	1549	44.0	1644	44.6	1861	44.5	1991	45.4	2144	46.5
	Asian or Pacific Islander	124	3.5	143	3.9	141	3.4	186	4.2	199	4.3
	American Indian or Alaskan Native	14	0.4	13	0.4	16	0.4	25	0.6	21	0.5
	International	125	3.6	178	4.8	165	3.9	171	3.9	201	4.4
	Unknown	0	0.0	0	0.0	1	0.0	1	0.0	1	0.0
	Total		3520	100.0	3686	100.0	4180	100.0	4388	100.0	4607



Degrees Awarded by Level and Minority Status

Degree Level	Minority Status	FL 02 - SU03		FL03 - SU04		FL04-SU05		FL05 - SU06		FL06 - SU07	
		#	%	#	%	#	%	#	%	#	%
Bachelors	Non-Minority	1,249	43.5	1,238	42.5	1,403	42.9	1,490	42.7	1,489	40.8
	Minority	1,624	56.5	1,674	57.5	1,869	57.1	2,002	57.3	2,160	59.2
	Total	2,873	100.0	2,912	100.0	3,272	100.0	3,492	100.0	3,649	100.0
Masters	Non-Minority	404	63.0	447	58.1	509	56.9	471	54.3	484	53.2
	Minority	237	37.0	322	41.9	386	43.1	396	45.7	426	46.8
	Total	641	100.0	769	100.0	895	100.0	867	100.0	910	100.0
Doctoral	Non-Minority	5	83.3	1	20.0	11	84.6	18	62.1	36	75.0
	Minority	1	16.7	4	80.0	2	15.4	11	37.9	12	25.0
	Total	6	100.0	5	100.0	13	100.0	29	100.0	48	100.0
Total	Non-Minority	1,658	47.1	1,686	45.7	1,923	46.0	1,979	45.1	2,009	43.6
	Minority	1,862	52.9	2,000	54.3	2,257	54.0	2,409	54.9	2,598	56.4
	Total	3,520	100.0	3,686	100.0	4,180	100.0	4,388	100.0	4,607	100.0

Degrees Awarded by Level and Gender

		FL 02 - SU03		FL03 - SU04		FL04-SU05		FL05 - SU06		FL06 - SU07	
Degree Level	Gender	#	%	#	%	#	%	#	%	#	%
Bachelors	Female	1,656	57.6	1,605	55.1	1,899	58.0	2,012	57.6	2,071	56.8
	Male	1,217	42.4	1,307	44.9	1,373	42.0	1,480	42.4	1,578	43.2
	Total	2,873	100.0	2,912	100.0	3,272	100.0	3,492	100.0	3,649	100.0
Masters	Female	373	58.2	448	58.3	550	61.5	527	60.8	538	59.1
	Male	268	41.8	321	41.7	345	38.5	340	39.2	372	40.9
	Total	641	100.0	769	100.0	895	100.0	867	100.0	910	100.0
Doctoral	Female	3	50.0	2	40.0	10	76.9	10	34.5	25	52.1
	Male	3	50.0	3	60.0	3	23.1	19	65.5	23	47.9
	Total	6	100.0	5	100.0	13	100.0	29	100.0	48	100.0
Total	Female	2,032	57.7	2,055	55.8	2,459	58.8	2,549	58.1	2,634	57.2
	Male	1,488	42.3	1,631	44.2	1,721	41.2	1,839	41.9	1,973	42.8
	Total	3,520	100.0	3,686	100.0	4,180	100.0	4,388	100.0	4,607	100.0

College of Architecture Degrees Awarded by Level

	FL 02 - SU03		FL03 - SU04		FL04-SU05		FL05 - SU06		FL06 - SU07	
Level	#	%	#	%	#	%	#	%	#	%
Bachelors	40	100.0	51	94.4	66	93.0	118	93.7	109	80.7
Masters	0	0.0	3	5.6	5	7.0	8	6.3	26	19.3
Doctoral	0	0.00	0	0.00	0	0.00	0	0.00	0	0.00
Total	40	100.0	54	100.0	71	100.0	126	100.0	135	100.0

College of Business Degrees Awarded by Level

	FL 02 - SU03		FL03 - SU04		FL04-SU05		FL05 - SU06		FL06 - SU07	
Level	#	%	#	%	#	%	#	%	#	%
Bachelors	808	80.0	889	79.3	994	79.8	991	77.8	1,032	80.7
Masters	202	20.0	232	20.7	251	20.2	273	21.4	241	18.8
Doctoral	0	0.0	0	0.0	0	0.0	10	0.8	6	0.5
Total	1,010	100.0	1,121	100.0	1,245	100.0	1,274	100.0	1,279	100.0

College of Education and Human Development Degrees Awarded by Level

	FL 02 - SU03		FL03 - SU04		FL04-SU05		FL05 - SU06		FL06 - SU07	
Level	#	%	#	%	#	%	#	%	#	%
Bachelors	486	64.5	406	57.3	510	57.0	629	63.5	658	63.9
Masters	265	35.2	300	42.4	375	41.9	353	35.6	359	34.9
Doctoral	2	0.3	2	0.3	9	1.0	9	0.9	12	1.2
Total	753	100.0	708	100.0	894	100.0	991	100.0	1,029	100.0

College of Engineering Degrees Awarded by Level

	FL 02 - SU03		FL03 - SU04		FL04-SU05		FL05 - SU06		FL06 - SU07	
Level	#	%	#	%	#	%	#	%	#	%
Bachelors	155	84.7	170	76.9	142	70.3	182	82.0	191	78.6
Masters	28	15.3	51	23.1	59	29.2	39	17.6	38	15.6
Doctoral	0	0.0	0	0.0	1	0.5	1	0.5	14	5.8
Total	183	100.0	221	100.0	202	100.0	222	100.0	243	100.0

College of Liberal and Fine Arts Degrees Awarded by Level

	FL 02 - SU03		FL03 - SU04		FL04-SU05		FL05 - SU06		FL06 - SU07	
Level	#	%	#	%	#	%	#	%	#	%
Bachelors	809	93.1	863	92.6	967	92.4	959	92.0	989	91.7
Masters	60	6.9	69	7.4	79	7.6	83	8.0	89	8.3
Doctoral										
Total	869	100.0	932	100.0	1046	100.0	1042	100.0	1078	100.0

College of Public Policy Degrees Awarded by Level

	FL 02 - SU03		FL03 - SU04		FL04-SU05		FL05 - SU06		FL06 - SU07	
Level	#	%	#	%	#	%	#	%	#	%
Bachelors	188	92.2	191	87.2	184	83.3	168	84.0	188	77.4
Masters	16	7.8	28	12.8	37	16.7	32	16.0	55	22.6
Total	204	100.0	219	100.0	221	100.0	200	100.0	243	100.0

College of Sciences Degrees Awarded by Level

	FL 02 - SU03		FL03 - SU04		FL04-SU05		FL05 - SU06		FL06 - SU07	
Level	#	%	#	%	#	%	#	%	#	%
Bachelors	387	83.9	342	79.4	409	81.6	445	83.5	482	80.3
Masters	70	15.2	86	20.0	89	17.8	79	14.8	102	17.0
Doctoral	4	0.9	3	0.7	3	0.6	9	1.7	16	2.7
Total	461	100.0	431	100.0	501	100.0	533	100.0	600	100.0

All Degrees Awarded by Level

	FL 02 - SU03		FL03 - SU04		FL04-SU05		FL05 - SU06		FL06 - SU07	
Level	#	%	#	%	#	%	#	%	#	%
Bachelors	2873	81.6	2912	79.0	3272	78.3	3492	79.6	3649	79.2
Masters	641	18.2	769	20.9	895	21.4	867	19.8	910	19.8
Doctoral	6	0.2	5	0.1	13	0.3	29	0.7	48	1.0
Total	3520	100.0	3686	100.0	4180	100.0	4388	100.0	4607	100.0

Faculty and Staff Information

For this report the first section contains all faculty members and teaching assistants at UTSA while the second section contains only faculty members and teaching assistants who are teaching at least one course. All data comes from information certified by the State of Texas. For more information on this topic please contact the Office of Institutional Research at (210)458-4706

The Staff Information comes from the Human Resources Equal Employment Opportunity report (QEPG006), for more information on this data please contact Human Resources at (210) 458-4259.

All Faculty Members and Teaching Assistants

Number of Faculty Members by Ethnicity

Ethnicity	Fall 2003		Fall 2004		Fall 2005		Fall 2006		Fall 2007	
	#	%	#	%	#	%	#	%	#	%
White-Non-Hispanic	701	72.3	760	69.2	780	68.2	796	66.5	803	65.7
Black-Non-Hispanic	23	2.4	24	2.2	26	2.3	29	2.4	38	3.1
Hispanic	146	15.1	187	17.0	195	17.1	224	18.7	228	18.6
Asian or Pacific Islander	91	9.4	112	10.2	131	11.5	133	11.1	141	11.5
American Indian or Alaskan Native	8	0.8	10	0.9	10	0.9	15	1.3	13	1.1
International	0	0.0	6	0.6	1	0.1	0	0.0	0	0.0
Unknown or Not Reported	0	0.0	0	0.0	1	0.1	0	0.0	0	0.0
Total	969	100.0	1,099	100.0	1,144	100.0	1,197	100.0	1,223	100.0

Number of Teaching Assistants by Ethnicity

Ethnicity	Fall 2003		Fall 2004		Fall 2005		Fall 2006		Fall 2007	
	#	%	#	%	#	%	#	%	#	%
White-Non-Hispanic	89	46.84	83	38.97	101	39.30	103	36.92	110	39.6
Black-Non-Hispanic	10	5.26	9	4.23	12	4.67	11	3.94	9	3.2
Hispanic	37	19.47	45	21.13	58	22.57	60	21.51	54	19.4
Asian or Pacific Islander	51	26.84	36	16.90	86	33.46	105	37.63	105	37.8
American Indian or Alaskan Native	3	1.58	1	0.47	0	0.00	0	0.00	0	0.0
International	0	0.00	39	18.31	0	0.00	0	0.00	0	0.0
Unknown or Not Reported	0	0.00	0	0.00	0	0.00	0	0.00	0	0.0
Total	190	100.00	213	100.00	257	100.00	279	100.00	278	100.0

All Faculty Members (continued)

Number of Faculty Members by Gender

	Fall 2003		Fall 2004		Fall 2005		Fall 2006		Fall 2007	
Gender	#	%	#	%	#	%	#	%	#	%
Female	395	40.8	449	40.9	477	41.7	501	41.9	512	41.9
Male	574	59.2	650	59.1	667	58.3	696	58.2	711	58.1
Total	969	100.0	1,099	100.0	1,144	100.0	1,197	100.0	1,223	100.0

Number of Teaching Assistants by Gender

	Fall 2003		Fall 2004		Fall 2005		Fall 2006		Fall 2007	
Gender	#	%	#	%	#	%	#	%	#	%
Female	72	37.9	95	44.6	124	48.3	148	53.1	144	51.8
Male	118	62.1	118	55.4	133	51.8	131	47.0	134	48.2
Total	190	100.0	213	100.0	257	100.0	279	100.0	278	100.0

Number of Faculty Members by Tenure Status

	Fall 2003		Fall 2004		Fall 2005		Fall 2006		Fall 2007	
Tenure Status	#	%	#	%	#	%	#	%	#	%
Non-Tenured Faculty	520	44.9	583	44.4	595	42.5	641	43.4	637	42.4
Teaching Assistants (Non-Tenured)	190	16.4	213	16.2	257	18.3	279	18.9	278	18.5
Tenured Faculty	294	25.4	327	24.9	344	24.6	367	24.9	388	25.8
Tenure Track Faculty	155	13.4	189	14.4	205	14.6	189	12.8	198	13.2
Total	1,159	100.0	1,312	100.0	1,401	100.0	1,476	100.0	1,501	100.0

All Faculty Members (continued)

Number of Faculty Members by Rank

Rank	Fall 2003		Fall 2004		Fall 2005		Fall 2006		Fall 2007	
	#	%	#	%	#	%	#	%	#	%
Professor	135	11.7	166	12.7	165	11.8	180	12.2	188	12.5
Associate Professor	159	13.7	160	12.2	183	13.1	191	12.9	202	13.5
Assistant Professor	149	12.9	188	14.3	198	14.1	182	12.3	193	12.9
Instructor	6	0.5	2	0.2	3	0.2	3	0.2	3	0.2
Other Faculty	520	44.9	583	44.4	595	42.5	641	43.4	637	42.4
Teaching Assistant	190	16.4	213	16.2	257	18.3	279	18.9	278	18.5
Total	1,159	100.0	1,312	100.0	1,401	100.0	1,476	100.0	1,501	100.0

Tenured and Tenure Track Faculty by Ethnicity

Ethnicity	Fall 2003		Fall 2004		Fall 2005		Fall 2006		Fall 2007	
	#	%	#	%	#	%	#	%	#	%
White-Non-Hispanic	299	66.6	328	63.6	341	62.1	334	60.1	351	66.6
Black-Non-Hispanic	9	2.0	13	2.5	14	2.6	15	2.7	18	2.0
Hispanic	68	15.1	81	15.7	91	16.6	96	17.3	100	15.1
Asian or Pacific Islander	67	14.9	83	16.1	94	17.1	100	18.0	108	14.9
American Indian or Alaskan Native	6	1.3	7	1.4	8	1.5	11	2.0	9	1.3
International	0	0.0	4	0.8	1	0.2	0	0.0	0	0.0
Unknown or Not Reported	0	0.0	0	0.0	0	0.0	0	0.0	0	0.0
Total	449	100.0	516	100.0	549	100.0	556	100.0	586	100.0

Tenured and Tenure Track Faculty by Gender

Gender	Fall 2003		Fall 2004		Fall 2005		Fall 2006		Fall 2007	
	#	%	#	%	#	%	#	%	#	%
Female	141	31.4	173	33.5	188	34.2	189	34.0	201	34.3
Male	308	68.6	343	66.5	361	65.8	367	66.0	385	65.7
Total	449	100.0	516	100.0	549	100.0	556	100.0	586	100.0

FTE of All Faculty Members and Teaching Assistants

FTE of Faculty Members

Ethnicity	Fall 2003		Fall 2004		Fall 2005		Fall 2006		Fall 2007	
	#	%	#	%	#	%	#	%	#	%
White-Non-Hispanic	532.5	70.3	575.8	67.3	599.6	66.4	614.8	64.7	621.4	63.8
Black-Non-Hispanic	18.3	2.4	19.5	2.3	20.6	2.3	25.5	2.7	30.4	3.1
Hispanic	116.3	15.4	143.6	16.8	154.1	17.1	173.3	18.2	180.3	18.5
Asian or Pacific Islander	82.6	10.9	101.9	11.9	119.0	13.2	123.4	13.0	128.5	13.2
American Indian or Alaskan Native	8.0	1.1	10.0	1.2	9.0	1.0	13.0	1.4	12.8	1.3
International	0.0	0.0	5.2	0.6	1.0	0.1	0.0	0.0	0.0	0.0
Unknown or Not Reported	0.0	0.0	0.0	0.0	0.0	0.0	0.0	0.0	0.0	0.0
Total	757.7	100.0	856.0	100.0	903.4	100.0	949.9	100.0	973.4	100.0

FTE of Teaching Assistants

Ethnicity	Fall 2003		Fall 2004		Fall 2005		Fall 2006		Fall 2007	
	#	%	#	%	#	%	#	%	#	%
White-Non-Hispanic	38.2	45.6	36.1	37.2	46.0	38.5	47.3	36.3	51.2	39.2
Black-Non-Hispanic	4.3	5.1	4.0	4.1	5.9	4.9	5.0	3.9	4.0	3.1
Hispanic	17.2	20.5	21.4	22.1	26.3	22.0	27.7	21.3	25.3	19.3
Asian or Pacific Islander	23.0	27.4	17.0	17.5	41.3	34.6	50.3	38.6	50.2	38.4
American Indian or Alaskan Native	1.3	1.5	0.5	0.5	0.0	0.0	0.0	0.0	0.0	0.0
International	0.0	0.0	18.0	18.5	0.0	0.0	0.0	0.0	0.0	0.0
Unknown or Not Reported	0.0	0.0	0.0	0.0	0.0	0.0	0.0	0.0	0.0	0.0
Total	83.9	100.0	97.0	100.0	119.5	100.0	130.3	100.0	130.6	100.0

FTE of All Faculty Members and Teaching Assistants (continued)

FTE of Faculty Members by Gender

Gender	Fall 2003		Fall 2004		Fall 2005		Fall 2006		Fall 2007	
	#	%	#	%	#	%	#	%	#	%
Female	299.8	39.6	346.3	40.5	371.0	41.1	396.4	41.7	406.1	41.7
Male	457.9	60.4	509.7	59.5	532.3	58.9	553.5	58.3	567.2	58.3
Total	757.7	100.0	856.0	100.0	903.4	100.0	949.9	100.0	973.4	100.0

FTE of Teaching Assistants by Gender

Gender	Fall 2003		Fall 2004		Fall 2005		Fall 2006		Fall 2007	
	#	%	#	%	#	%	#	%	#	%
Female	33.2	39.5	43.2	44.6	57.5	48.1	67.9	52.1	67.6	51.8
Male	50.7	60.5	53.7	55.4	62.0	51.9	62.4	47.9	63.0	48.2
Total	83.9	100.0	97.0	100.0	119.5	100.0	130.3	100.0	130.6	100.0

FTE by Tenure Status of Faculty (Teaching Assistants Separated)

Tenure Status	Fall 2003		Fall 2004		Fall 2005		Fall 2006		Fall 2007	
	#	%	#	%	#	%	#	%	#	%
Non-Tenured Faculty	315.5	37.5	352.8	37.0	370.9	36.3	401.9	37.2	399.7	37.5
Teaching Assistants (Non-Tenured)	83.9	10.0	97.0	10.2	119.5	11.7	130.3	12.1	130.6	10.0
Tenured Faculty	287.2	34.1	319.5	33.5	331.8	32.4	360.0	33.3	377.7	34.1
Tenure Track Faculty	155.0	18.4	183.8	19.3	200.7	19.6	188.0	17.4	196.0	18.4
Total	841.6	100.0	953.0	100.0	1022.8	100.0	1080.3	100.0	1104.0	100.0

FTE of All Faculty Members and Teaching Assistants (continued)

FTE by Rank (Teaching Assistants Separated)

Rank	Fall 2002		Fall 2003		Fall 2004		Fall 2005		Fall 2006	
	#	%	#	%	#	%	#	%	#	%
Professor	130.4	15.5	162.5	17.1	156.4	15.3	175.8	16.3	180.7	15.5
Associate Professor	156.7	18.6	156.0	16.4	179.4	17.5	188.3	17.4	199.0	18.6
Assistant Professor	149.0	17.7	182.8	19.2	193.7	18.9	181.0	16.8	191.0	17.7
Instructor	6.0	0.7	2.0	0.2	3.0	0.3	3.0	0.3	3.0	0.7
Other Faculty	315.5	37.5	352.8	37.0	370.9	36.3	401.9	37.2	399.7	37.5
Teaching Assistant	83.9	10.0	97.0	10.2	119.5	11.7	130.3	12.1	130.6	10.0
Total	841.6	100.0	953.0	100.0	1022.8	100.0	1080.3	100.0	1104.0	100.0

Instructional Faculty* Members and Teaching Assistants

Number of Instructional Faculty by Ethnicity

Ethnicity	Fall 2003		Fall 2004		Fall 2005		Fall 2006		Fall 2007	
	#	%	#	%	#	%	#	%	#	%
White-Non-Hispanic	669	71.9	719	69.2	736	68.4	759	66.7	770	65.7
Black-Non-Hispanic	23	2.5	23	2.2	25	2.3	27	2.4	38	3.2
Hispanic	142	15.3	178	17.1	182	16.9	216	19.0	219	18.7
Asian or Pacific Islander	88	9.5	106	10.2	121	11.3	123	10.8	134	11.4
American Indian or Alaskan Native	8	0.9	9	0.9	10	0.9	13	1.1	11	0.9
International	0	0.0	4	0.4	1	0.1	0	0.0	0	0.0
Unknown or Not Reported	0	0.0	0	0.0	1	0.1	0	0.0	0	0.0
Total	930	100.0	1,039	100.0	1,076	100.0	1,138	100.0	1,172	100.0

Number of Instructional Teaching Assistants by Ethnicity

Ethnicity	Fall 2003		Fall 2004		Fall 2005		Fall 2006		Fall 2007	
	#	%	#	%	#	%	#	%	#	%
White-Non-Hispanic	72	57.1	66	41.3	90	38.8	80	38.3	84	37.8
Black-Non-Hispanic	5	4.0	7	4.4	12	5.2	9	4.3	3	1.4
Hispanic	25	19.8	28	17.5	50	21.6	44	21.1	45	20.3
Asian or Pacific Islander	23	18.3	21	13.1	80	34.5	76	36.4	90	40.5
American Indian or Alaskan Native	1	0.8	1	0.6	0	0.0	0	0.0	0	0.0
International	0	0.0	37	23.1	0	0.0	0	0.0	0	0.0
Unknown or Not Reported	0	0.0	0	0.0	0	0.0	0	0.0	0	0.0
Total	126	100.0	160	100.0	232	100.0	209	100.0	222	100.0

*Instructional means the Faculty/Teaching Assistants who are teaching at least one course

Instructional Faculty Members and Teaching Assistants (continued)

Number of Instructional Faculty by Gender

Gender	Fall 2003		Fall 2004		Fall 2005		Fall 2006		Fall 2007	
	#	%	#	%	#	%	#	%	#	%
Female	381	41.0	427	41.1	455	42.3	477	41.9	492	42.0
Male	549	59.0	612	58.9	621	57.7	661	58.1	680	58.0
Total	930	100.0	1,039	100.0	1,076	100.0	1,138	100.0	1,172	100.0

Number of Instructional Teaching Assistants by Gender

Gender	Fall 2003		Fall 2004		Fall 2005		Fall 2006		Fall 2007	
	#	%	#	%	#	%	#	%	#	%
Female	50	39.7	72	45.0	107	46.1	110	52.6	114	51.4
Male	76	60.3	88	55.0	125	53.9	99	47.4	108	48.6
Total	126	100.0	160	100.0	232	100.0	209	100.0	222	100.0

Number of Instructional Faculty and Teaching Assistants by Tenure Status

Tenure Status	Fall 2003		Fall 2004		Fall 2005		Fall 2006		Fall 2007	
	#	%	#	%	#	#	%	#	%	#
Non-Tenured Faculty	497	47.1	550	45.9	565	43.2	618	45.9	619	44.4
Non-Tenured (Teaching Assistants)	126	11.9	160	13.3	232	17.7	209	15.5	222	15.9
Tenured Faculty	281	26.6	307	25.6	317	24.2	341	25.3	362	26.0
Tenure Track Faculty	152	14.4	182	15.2	194	14.8	179	13.3	191	13.7
Total	1,056	100.0	1,199	100.0	1,308	100.0	1,347	100.0	1,394	100.0

Instructional Faculty Members and Teaching Assistants (continued)

Number of Instructional Faculty and Teaching Assistants by Rank

Rank	Fall 2003		Fall 2004		Fall 2005		Fall 2006		Fall 2007	
	#	%	#	%	#	%	#	%	#	%
Professor	123	11.7	152	12.7	148	11.3	163	12.1	174	12.5
Associate Professor	158	15.0	154	12.8	172	13.2	182	13.5	190	13.6
Assistant Professor	146	13.8	181	15.1	188	14.4	172	12.8	186	13.3
Instructor	6	0.6	2	0.2	3	0.2	3	0.2	3	0.2
Other Faculty	497	47.1	550	45.9	565	43.2	618	45.9	619	44.4
Teaching Assistants	126	11.9	160	13.3	232	17.7	209	15.5	222	15.9
Total	1,056	100.0	1,199	100.0	1,308	100.0	1,347	100.0	1,394	100.0

Number of Instructional Tenured and Tenure Track Faculty by Ethnicity

Ethnicity	Fall 2003		Fall 2004		Fall 2005		Fall 2006		Fall 2007	
	#	%	#	%	#	%	#	%	#	%
White-Non-Hispanic	287	66.3	313	64.0	319	62.4	314	60.4	333	60.2
Black-Non-Hispanic	9	2.1	13	2.7	13	2.5	13	2.5	18	3.3
Hispanic	65	15.0	76	15.5	80	15.7	91	17.5	92	16.6
Asian or Pacific Islander	66	15.2	79	16.2	90	17.6	93	17.9	103	18.6
American Indian or Alaskan Native	6	1.4	6	1.2	8	1.6	9	1.7	7	1.3
International	0	0.0	2	0.4	1	0.2	0	0.0	0	0.0
Unknown or Not Reported	0	0.0	0	0.0	0	0.0	0	0.0	0	0.0
Total	433	100.0	489	100.0	511	100.0	520	100.0	553	100.0

Number of Instructional Tenured and Tenure Track Faculty by Gender

Gender	Fall 2003		Fall 2004		Fall 2005		Fall 2006		Fall 2007	
	#	%	#	%	#	%	#	%	#	%
Female	137	31.6	168	34.4	179	35.0	177	34.0	188	34.0
Male	296	68.4	321	65.6	332	65.0	343	66.0	365	66.0
Total	433	100.0	489	100.0	511	100.0	520	100.0	553	100.0

FTE of Instructional Faculty and Teaching Assistants

Instructional Faculty FTE by Ethnicity

Ethnicity	Fall 2003		Fall 2004		Fall 2005		Fall 2006		Fall 2007	
	FTE	%	FTE	%	FTE	%	FTE	%	FTE	%
White-Non-Hispanic	488.2	70.9	510.6	68.8	536.8	67.0	548.5	65.7	565.6	65.7
Black-Non-Hispanic	14.1	2.1	16.5	2.2	18.0	2.3	20.7	2.5	27.6	3.2
Hispanic	101.8	14.8	121.3	16.3	135.7	16.9	148.8	17.8	157.4	18.7
Asian or Pacific Islander	76.5	11.1	82.5	11.1	101.1	12.6	105.2	12.6	113.0	11.4
American Indian or Alaskan Native	7.7	1.1	8.7	1.2	8.8	1.1	11.3	1.4	10.3	0.9
International	0.0	0.0	3.2	0.4	0.6	0.1	0.0	0.0	0.0	0.0
Unknown or Not Reported	0.0	0.0	0.0	0.0	0.0	0.0	0.0	0.0	0.0	0.0
Total	688.3	100.0	742.7	100.0	800.9	100.0	834.6	100.0	873.7	100.0

Instructional Teaching Assistants FTE by Ethnicity

Ethnicity	Fall 2003		Fall 2004		Fall 2005		Fall 2006		Fall 2007	
	FTE	%	FTE	%	FTE	%	FTE	%	FTE	%
White-Non-Hispanic	30.7	56.3	28.3	40.0	37.7	37.7	34.3	37.1	37.2	37.8
Black-Non-Hispanic	2.4	4.4	3.3	4.6	5.6	5.6	4.0	4.4	1.5	1.4
Hispanic	11.6	21.3	13.0	18.4	21.9	21.9	19.8	21.4	19.7	20.3
Asian or Pacific Islander	9.6	17.6	9.5	13.4	34.7	34.7	34.4	37.2	43.2	40.5
American Indian or Alaskan Native	0.3	0.5	0.5	0.7	0.0	0.0	0.0	0.0	0.0	0.0
International	0.0	0.0	16.2	23.0	0.0	0.0	0.0	0.0	0.0	0.0
Unknown or Not Reported	0.0	0.0	0.0	0.0	0.0	0.0	0.0	0.0	0.0	0.0
Total	54.6	100.0	70.7	100.0	99.8	100.0	92.5	100.0	101.6	100.0

FTE of Instructional Faculty and Teaching Assistants (continued)

Instructional Faculty FTE by Gender

Gender	Fall 2003		Fall 2004		Fall 2005		Fall 2006		Fall 2007	
	FTE	%	FTE	%	FTE	%	FTE	%	FTE	%
Female	272.1	39.5	312.4	42.1	334.6	41.8	348.0	41.7	359.3	42.0
Male	416.3	60.5	430.3	57.9	466.3	58.2	486.6	58.3	514.4	58.0
Total	688.3	100.0	742.7	100.0	800.9	100.0	834.6	100.0	873.7	100.0

Instructional Teaching Assistants FTE by Gender

Gender	Fall 2003		Fall 2004		Fall 2005		Fall 2006		Fall 2007	
	FTE	%	FTE	%	FTE	%	FTE	%	FTE	%
Female	23.3	42.7	32.8	46.3	46.5	46.6	47.5	51.4	52.0	51.4
Male	31.3	57.3	38.0	53.7	53.4	53.5	45.0	48.6	49.7	48.6
Total	54.6	100.0	70.7	100.0	99.8	100.0	92.5	100.0	101.6	100.0

FTE of Instructional Faculty and Teaching Assistants by Tenure Status

Tenure Status	Fall 2003		Fall 2004		Fall 2005		Fall 2006		Fall 2007	
	FTE	%	FTE	%	FTE	%	FTE	%	FTE	%
Non-Tenured Faculty	279.7	37.6	307.5	37.8	337.3	37.5	358.1	38.6	369.7	44.4
Non-Tenured (Teaching Assistants)	54.6	7.4	70.7	8.7	99.8	11.1	92.5	10.0	101.6	15.9
Tenured Faculty	261.2	35.2	266.5	32.8	285.3	31.7	308.0	33.2	325.1	26.0
Tenure Track Faculty	147.5	19.9	168.7	20.7	178.3	19.8	168.5	18.2	179.0	13.7
Total	742.9	100.0	813.4	100.0	900.8	100.0	927.1	100.0	975.3	100.0

FTE of Instructional Faculty and Teaching Assistants (continued)

FTE of Instructional Faculty and Teaching Assistants by Rank

	Fall 2003		Fall 2004		Fall 2005		Fall 2006		Fall 2007	
Rank	FTE	%	FTE	%	FTE	%	FTE	%	FTE	%
Professor	106.2	14.9	110.8	14.9	128.3	15.8	128.5	14.3	152.5	12.5
Associate Professor	141.5	19.8	150.4	20.2	136.5	16.8	159.6	17.7	174.6	13.6
Assistant Professor	146.3	20.5	141.5	19.1	168.7	20.7	172.5	19.2	174.0	13.3
Instructor	6.7	0.9	6.0	0.8	1.7	0.2	3.0	0.3	3.0	0.2
Other Faculty	254.0	35.6	279.7	37.6	307.5	37.8	337.3	37.5	369.7	44.4
Teaching Assistant	58.7	8.2	54.6	7.4	70.7	8.7	99.8	11.1	101.6	15.9
Total	713.4	100.0	742.9	100.0	813.4	100.0	900.8	100.0	975.3	100.0

All Faculty Rank by Ethnicity

Rank	Ethnicity	Fall 2003		Fall 2004		Fall 2005		Fall 2006		Fall 2007	
		#	%	#	%	#	%	#	%	#	%
Professor	White-Non-Hispanic	96	71.1	115	69.3	114	69.1	120	66.7	121	64.4
	Black-Non-Hispanic	1	0.7	3	1.8	2	1.2	3	1.7	5	2.7
	Hispanic	19	14.1	23	13.9	22	13.3	26	14.4	28	14.9
	Asian or Pacific Islander	16	11.9	22	13.3	25	15.2	26	14.4	30	16.0
	American Indian or Alaskan Native	3	2.2	3	1.8	2	1.2	5	2.8	4	2.1
	International	0	0.0	0	0.0	0	0.0	0	0.0	0	0.0
	Unknown or Not Reported	0	0.0	0	0.0	0	0.0	0	0.0	0	0.0
	Total	135	100.0	166	100.0	165	100.0	180	100.0	188	100.0
Associate Professor	White-Non-Hispanic	111	69.8	111	69.4	123	67.2	126	66.0	132	65.3
	Black-Non-Hispanic	4	2.5	3	1.9	4	2.2	5	2.6	7	3.5
	Hispanic	24	15.1	24	15.0	28	15.3	30	15.7	30	14.9
	Asian or Pacific Islander	17	10.7	19	11.9	24	13.1	27	14.1	29	14.4
	American Indian or Alaskan Native	3	1.9	3	1.9	4	2.2	3	1.6	4	2.0
	International	0	0.0	0	0.0	0	0.0	0	0.0	0	0.0
	Unknown or Not Reported	0	0.0	0	0.0	0	0.0	0	0.0	0	0.0
	Total	159	100.0	160	100.0	183	100.0	191	100.0	202	100.0
Assistant Professor	White-Non-Hispanic	89	59.7	101	53.7	102	51.5	87	47.8	97	50.3
	Black-Non-Hispanic	4	2.7	7	3.7	7	3.5	7	3.9	6	3.1
	Hispanic	24	16.1	34	18.1	41	20.7	38	20.9	41	21.2
	Asian or Pacific Islander	32	21.5	41	21.8	45	22.7	47	25.8	48	24.9
	American Indian or Alaskan Native	0	0.0	1	0.5	2	1.0	3	1.7	1	0.5
	International	0	0.0	4	2.1	1	0.5	0	0.0	0	0.0
	Unknown or Not Reported	0	0.0	0	0.0	0	0.0	0	0.0	0	0.0
	Total	149	100.0	188	100.0	198	100.0	182	100.0	193	100.0

All Faculty Rank by Ethnicity (continued)

Rank	Ethnicity	Fall 2003		Fall 2004		Fall 2005		Fall 2006		Fall 2007	
		#	%	#	%	#	%	#	%	#	%
Instructor	White-Non-Hispanic	3	50.0	1	50.0	2	66.7	1	33.3	1	33.3
	Black-Non-Hispanic	0	0.0	0	0.0	1	33.3	0	0.0	0	0.0
	Hispanic	1	16.7	0	0.0	0	0.0	2	66.7	1	33.3
	Asian or Pacific Islander	2	33.3	1	50.0	0	0.0	0	0.0	1	33.3
	American Indian or Alaskan Native	0	0.0	0	0.0	0	0.0	0	0.0	0	0.0
	International	0	0.0	0	0.0	0	0.0	0	0.0	0	0.0
	Unknown or Not Reported	0	0.0	0	0.0	0	0.0	0	0.0	0	0.0
	Total	6	100.0	2	100.0	3	100.0	3	100.0	3	100.0
Other Faculty	White-Non-Hispanic	402	77.3	432	74.1	439	73.8	462	72.1	452	71.0
	Black-Non-Hispanic	14	2.7	11	1.9	12	2.0	14	2.2	20	3.1
	Hispanic	78	15.0	106	18.2	104	17.5	128	20.0	128	20.1
	Asian or Pacific Islander	24	4.6	29	5.0	37	6.2	33	5.2	33	5.2
	American Indian or Alaskan Native	2	0.4	3	0.5	2	0.3	4	0.6	4	0.6
	International	0	0.0	2	0.3	0	0.0	0	0.0	0	0.0
	Unknown or Not Reported	0	0.0	0	0.0	1	0.2	0	0.0	0	0.0
	Total	520	100.0	583	100.0	595	100.0	641	100.0	637	100.0
Teaching Assistant	White-Non-Hispanic	89	46.8	83	39.0	101	39.3	103	36.9	110	39.6
	Black-Non-Hispanic	10	5.3	9	4.2	12	4.7	11	3.9	9	3.2
	Hispanic	37	19.5	45	21.1	58	22.6	60	21.5	54	19.4
	Asian or Pacific Islander	51	26.8	36	16.9	86	33.5	105	37.6	105	37.8
	American Indian or Alaskan Native	3	1.6	1	0.5	0	0.0	0	0.0	0	0.0
	International	0	0.0	39	18.3	0	0.0	0	0.0	0	0.0
	Unknown or Not Reported	0	0.0	0	0.0	0	0.0	0	0.0	0	0.0
	Total	190	100.0	213	100.0	257	100.0	279	100.0	278	100.0

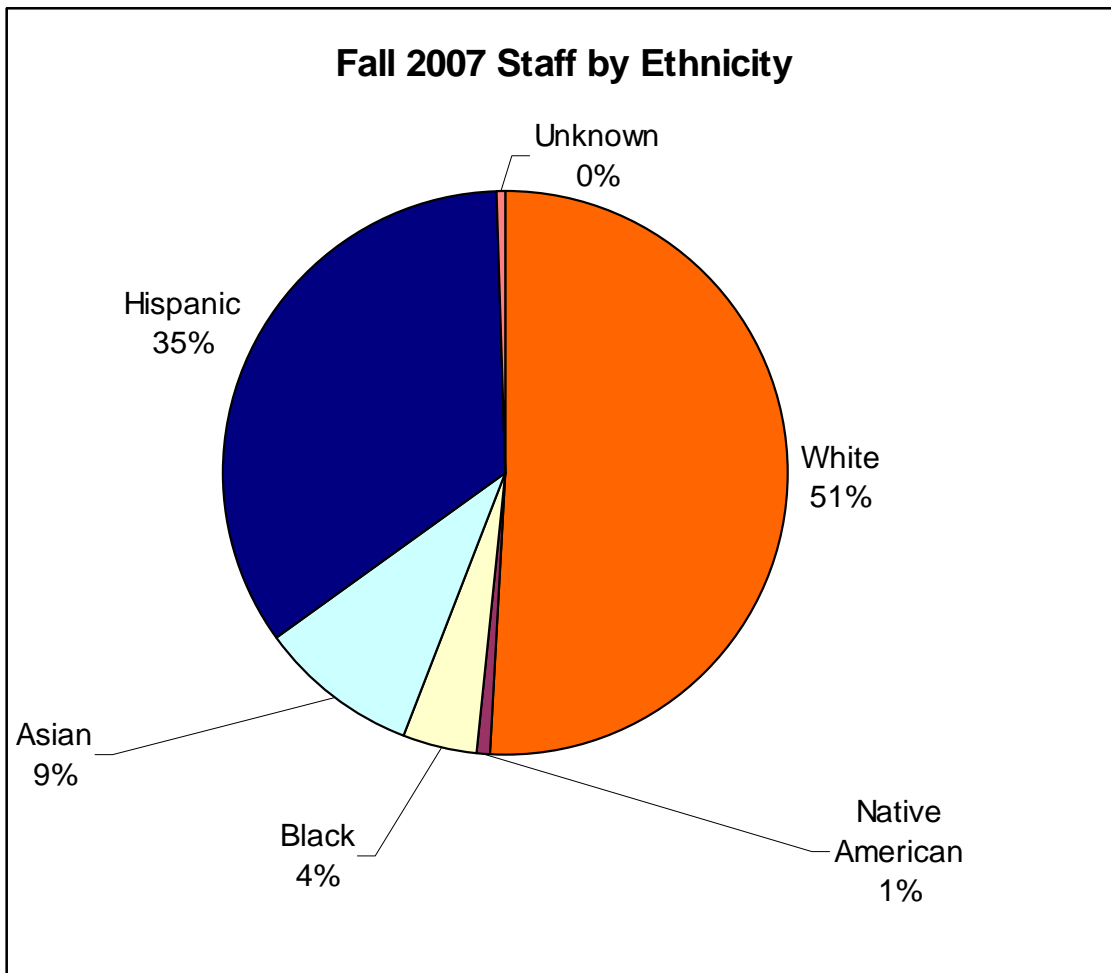
Staff Information

The Staff Information comes from the Human Resources Equal Employment Opportunity report which contains information for all full time benefits eligible staff members. For more information on this data please contact Human Resources at (210) 458-4259.

EEO Classification	Gender	2003		2004		2005		2006		2007	
		#	%	#	%	#	%	#	%	#	%
Administrative	Female	110	52.4	119	53.6	122	51.5	137	51.9	159	52.5
	Male	100	47.6	103	46.4	115	48.5	127	48.1	143	47.2
	Unknown	0	0.0	0	0.0	0	0.0	0	0.0	1	0.3
	Total	210	100.0	222	100.0	237	100.0	264	100.0	303	100.0
Faculty*	Female	321	40.6	366	41.7	394	42.2	406	41.9	461	43.0
	Male	470	59.4	512	58.3	540	57.8	562	58.1	612	57.0
	Unknown	0	0.0	0	0.0	0	0.0	0	0.0	0	0.0
	Total	791	100.0	878	100.0	934	100.0	968	100.0	1,073	100.0
Professional	Female	437	66.2	371	58.2	411	57.6	393	55.2	498	55.8
	Male	223	33.8	266	41.8	302	42.4	319	44.8	392	43.9
	Unknown	0	0.0	0	0.0	0	0.0	0	0.0	2	0.2
	Total	660	100.0	637	100.0	713	100.0	712	100.0	892	100.0
Clerical	Female	209	86.4	306	90.5	340	89.9	322	86.8	367	88.4
	Male	33	13.6	32	9.5	38	10.1	49	13.2	45	10.8
	Unknown	0	0.0	0	0.0	0	0.0	0	0.0	3	0.7
	Total	242	100.0	338	100.0	378	100.0	371	100.0	415	100.0
Technical	Female	96	46.4	83	42.6	102	50.2	109	47.2	120	44.0
	Male	111	53.6	112	57.4	101	49.8	122	52.8	153	56.0
	Unknown	0	0.0	0	0.0	0	0.0	0	0.0	0	0.0
	Total	207	100.0	195	100.0	203	100.0	231	100.0	273	100.0
Skilled	Female	0	0.0	0	0.0	1	2.4	0	0.0	0	0.0
	Male	34	100.0	35	100.0	41	97.6	46	100.0	51	100.0
	Unknown	0	0.0	0	0.0	0	0.0	0	0.0	0	0.0
	Total	34	100.0	35	100.0	42	100.0	46	100.0	51	100.0
Service	Female	59	30.3	57	28.1	71	32.7	83	35.8	95	35.3
	Male	136	69.7	146	71.9	146	67.3	149	64.2	173	64.3
	Unknown	0	0.0	0	0.0	0	0.0	0	0.0	1	0.4
	Total	195	100.0	203	100.0	217	100.0	232	100.0	269	100.0
Total	Female	1,232	52.7	1,302	51.9	1,441	52.9	1,450	51.3	1,700	51.9
	Male	1,107	47.3	1,206	48.1	1,283	47.1	1,374	48.7	1,569	47.9
	Unknown	0	0.0	0	0.0	0	0.0	0	0.0	7	0.2
	Total	2,339	100.0	2,508	100.0	2,724	100.0	2,824	100.0	3,276	100.0

EEO Classification	Ethnicity	2003		2004		2005		2006		2007	
		#	%	#	%	#	%	#	%	#	%
Admin	White	140	66.7	146	65.8	157	66.2	169	64.0	192	63.4
	Native American	1	0.5	1	0.5	1	0.4	1	0.4	2	0.7
	Black	9	4.3	10	4.5	7	3.0	9	3.4	12	4.0
	Asian	3	1.4	4	1.8	4	1.7	6	2.3	8	2.6
	Hispanic	57	27.1	61	27.5	68	28.7	79	29.9	88	29.0
	Unknown	0	0.0	0	0.0	0	0.0	0	0.0	1	0.3
	Total	210	100.0	222	100.0	237	100.0	264	100.0	303	100.0
Faculty	White	531	67.1	569	64.8	592	63.4	602	62.2	662	61.7
	Native American	9	1.1	9	1.0	11	1.2	15	1.5	13	1.2
	Black	23	2.9	22	2.5	22	2.4	25	2.6	30	2.8
	Asian	103	13.0	126	14.4	146	15.6	151	15.6	168	15.7
	Hispanic	125	15.8	152	17.3	163	17.5	175	18.1	195	18.2
	Unknown	0	0.0	0	0.0	0	0.0	0	0.0	5	0.5
	Total	791	100.0	878	100.0	934	100.0	968	100.0	1,073	100.0
Professional	White	370	56.1	340	53.4	362	50.8	365	51.3	430	48.2
	Native American	0	0.0	4	0.6	6	0.8	4	0.6	6	0.7
	Black	25	3.8	26	4.1	35	4.9	34	4.8	47	5.3
	Asian	41	6.2	61	9.6	83	11.6	82	11.5	109	12.2
	Hispanic	224	33.9	206	32.3	226	31.7	227	31.9	297	33.3
	Unknown	0	0.0	0	0.0	1	0.1	0	0.0	3	0.3
	Total	660	100.0	637	100.0	713	100.0	712	100.0	892	100.0
Clerical	White	108	44.6	155	45.9	163	43.1	165	44.5	176	42.4
	Native American	2	0.8	2	0.6	2	0.5	2	0.5	2	0.5
	Black	9	3.7	12	3.6	16	4.2	14	3.8	19	4.6
	Asian	8	3.3	5	1.5	5	1.3	6	1.6	5	1.2
	Hispanic	115	47.5	164	48.5	192	50.8	184	49.6	210	50.6
	Unknown	0	0.0	0	0.0	0	0.0	0	0.0	3	0.7
	Total	242	100.0	338	100.0	378	100.0	371	100.0	415	100.0
Technical	White	104	50.2	93	47.7	92	45.3	97	42.0	118	43.2
	Native American	2	1.0	2	1.0	1	0.5	2	0.9	3	1.1
	Black	8	3.9	8	4.1	13	6.4	17	7.4	19	7.0
	Asian	13	6.3	9	4.6	9	4.4	11	4.8	13	4.8
	Hispanic	80	38.6	83	42.6	88	43.3	104	45.0	120	44.0
	Unknown	0	0.0	0	0.0	0	0.0	0	0.0	0	0.0
	Total	207	100.0	195	100.0	203	100.0	231	100.0	273	100.0
Skilled	White	18	52.9	16	45.7	19	45.2	18	39.1	19	37.3
	Native American	0	0.0	0	0.0	0	0.0	0	0.0	0	0.0
	Black	3	8.8	3	8.6	3	7.1	3	6.5	3	5.9
	Asian	0	0.0	0	0.0	0	0.0	0	0.0	0	0.0
	Hispanic	13	38.2	16	45.7	20	47.6	25	54.3	29	56.9
	Unknown	0	0.0	0	0.0	0	0.0	0	0.0	0	0.0
	Total	34	100.0	35	100.0	42	100.0	46	100.0	51	100.0

EEO Classification	Ethnicity	2003		2004		2005		2006		2007	
		#	%	#	%	#	%	#	%	#	%
Service	White	49	25.1	47	23.2	56	25.8	60	25.9	70	26.0
	Native American	0	0.0	0	0.0	0	0.0	0	0.0	0	0.0
	Black	4	2.1	2	1.0	2	0.9	4	1.7	3	1.1
	Asian	2	1.0	2	1.0	2	0.9	2	0.9	2	0.7
	Hispanic	140	71.8	152	74.9	157	72.4	166	71.6	192	71.4
	Unknown	0	0.0	0	0.0	0	0.0	0	0.0	2	0.7
	Total		195	100.0	203	100.0	217	100.0	232	100.0	269
Total	White	1,320	56.4	1,366	54.5	1,441	52.9	1,476	52.3	1,667	50.9
	Native American	14	0.6	18	0.7	21	0.8	24	0.8	26	0.8
	Black	81	3.5	83	3.3	98	3.6	106	3.8	133	4.1
	Asian	170	7.3	207	8.3	249	9.1	258	9.1	305	9.3
	Hispanic	754	32.2	834	33.3	914	33.6	960	34.0	1,131	34.5
	Unknown	0	0.0	0	0.0	1	0.0	0	0.0	14	0.4
	Total		2,339	100.0	2,508	100.0	2,724	100.0	2,824	100.0	3,276



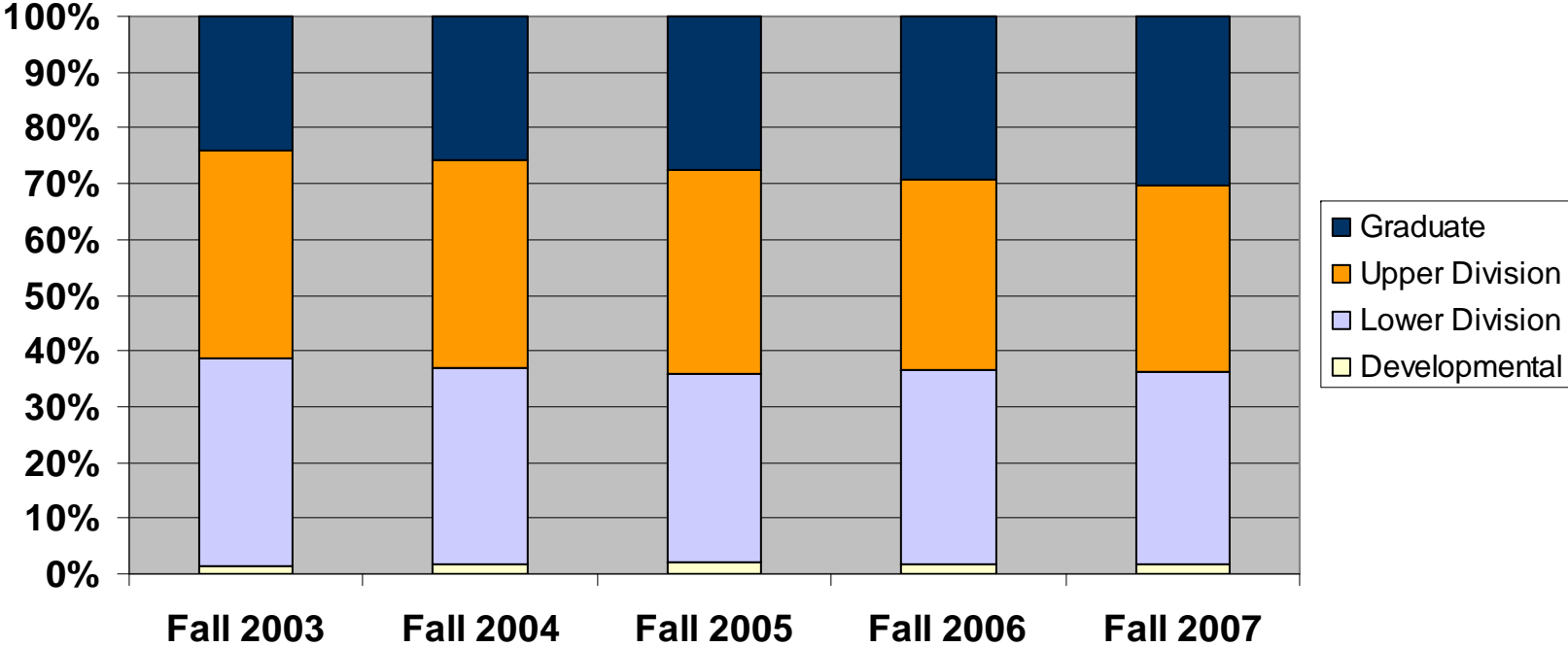
Courses Taught at UTSA

The courses taught information comes from the Coordinating Board Course Report (CBM004) which is certified by the state. The Course level comes from the Course Inventory and Course Type is defined in the Definitions section of the Fact Book. For each section the number of courses offered, the number of students enrolled, and the number of semester credit hours generated are included. The section on college comes from the subject of the course and is for the Fall 2007 college structure. For more information please contact the Office of Institutional Research at (210) 458-4706.

Number Of Courses by Level and Course Type

Course Level	Course Type	Fall 2003		Fall 2004		Fall 2005		Fall 2006		Fall 2007	
		#	%	#	%	#	%	#	%	#	%
Developmental	Organized Classes	45	100.0	60	100.0	71	100.0	67	100.0	67	100.0
	Lab Classes	0	0.0	0	0.0	0	0.0	0	0.0	0	0.0
	Individual Instruction	0	0.0	0	0.0	0	0.0	0	0.0	0	0.0
	Total	45	100.0	60	100.0	71	100.0	67	100.0	67	100.0
Lower Division	Organized Classes	798	73.7	896	76.6	907	77.1	999	77.1	1,022	77.2
	Lab Classes	195	18.0	186	15.9	184	15.6	206	15.9	209	15.8
	Individual Instruction	90	8.3	88	7.5	86	7.3	90	7.0	93	7.0
	Total	1,083	100.0	1,170	100.0	1,177	100.0	1,295	100.0	1,324	100.0
Upper Division	Organized Classes	742	68.0	828	66.9	843	66.9	852	66.6	875	68.2
	Lab Classes	101	9.3	128	10.3	128	10.2	123	9.6	130	10.1
	Individual Instruction	248	22.7	282	22.8	290	23.0	305	23.8	278	21.7
	Total	1,091	100.0	1,238	100.0	1,261	100.0	1,280	100.0	1,283	100.0
Graduate Level	Organized Classes	325	46.7	362	42.1	417	43.4	432	39.6	462	39.7
	Lab Classes	8	1.2	13	1.5	14	1.5	18	1.7	19	1.6
	Individual Instruction	363	52.2	483	56.3	529	55.1	640	58.7	682	58.6
	Total	696	100.0	858	100.0	960	100.0	1,090	100.0	1,163	100.0
Total	Organized Classes	1,910	65.5	2,146	64.5	2,238	64.5	2,350	63.0	2,426	63.2
	Lab Classes	304	10.4	327	9.8	326	9.4	347	9.3	358	9.3
	Individual Instruction	701	24.1	853	25.7	905	26.1	1,035	27.7	1,053	27.4
	Total	2,915	100.0	3,326	100.0	3,469	100.0	3,732	100.0	3,837	100.0

Percent of Courses Taught by Level



Enrollment in Courses Offered by Level and Course Type

Course Level	Course Type	Fall 2003		Fall 2004		Fall 2005		Fall 2006		Fall 2007	
		#	%	#	%	#	%	#	%	#	%
Developmental	Organized Classes	1,507	100.0	1,982	100.0	2,338	100.0	2,427	100.0	2,536	100.0
	Lab Classes	0	0.0	0	0.0	0	0.0	0	0.0	0	0.0
	Individual Instruction	0	0.0	0	0.0	0	0.0	0	0.0	0	0.0
	Total	1,507	100.0	1,982	100.0	2,338	100.0	2,427	100.0	2,536	100.0
Lower Division	Organized Classes	48,524	91.5	51,518	92.4	53,664	92.54	57,359	92.58	58,695	77.2
	Lab Classes	4,196	7.9	3,896	7.0	3,980	6.86	4,233	6.83	4,420	15.8
	Individual Instruction	321	0.6	319	0.6	346	0.60	366	0.59	331	7.0
	Total	53,041	100.0	55,733	100.0	57,990	100.0	61,958	100.0	63,446	100.0
Upper Division	Organized Classes	28,630	92.3	30,153	90.6	31,524	90.65	31,846	91.00	31,573	68.2
	Lab Classes	1,578	5.1	2,218	6.7	2,273	6.54	2,242	6.41	2,368	10.1
	Individual Instruction	796	2.6	903	2.7	980	2.82	909	2.60	890	21.7
	Total	31,004	100.0	33,274	100.0	34,777	100.0	34,997	100.0	34,831	100.0
Graduate Level	Organized Classes	6,168	88.8	6,399	86.3	6,406	85.23	6,660	83.73	6,524	39.7
	Lab Classes	67	1.0	90	1.2	103	1.37	155	1.95	172	1.6
	Individual Instruction	713	10.3	929	12.5	1,007	13.40	1,139	14.32	1,151	58.6
	Total	6,948	100.0	7,418	100.0	7,516	100.0	7,954	100.0	7,847	100.0
Total	Organized Classes	84,829	91.7	90,052	91.5	93,932	91.53	98,292	91.57	99,328	63.2
	Lab Classes	5,841	6.3	6,204	6.3	6,356	6.19	6,630	6.18	6,960	9.3
	Individual Instruction	1,830	2.0	2,151	2.2	2,333	2.27	2,414	2.25	2,372	27.4
	Total	92,500	100.0	98,407	100.0	102,621	100.0	107,336	100.0	108,660	100.0

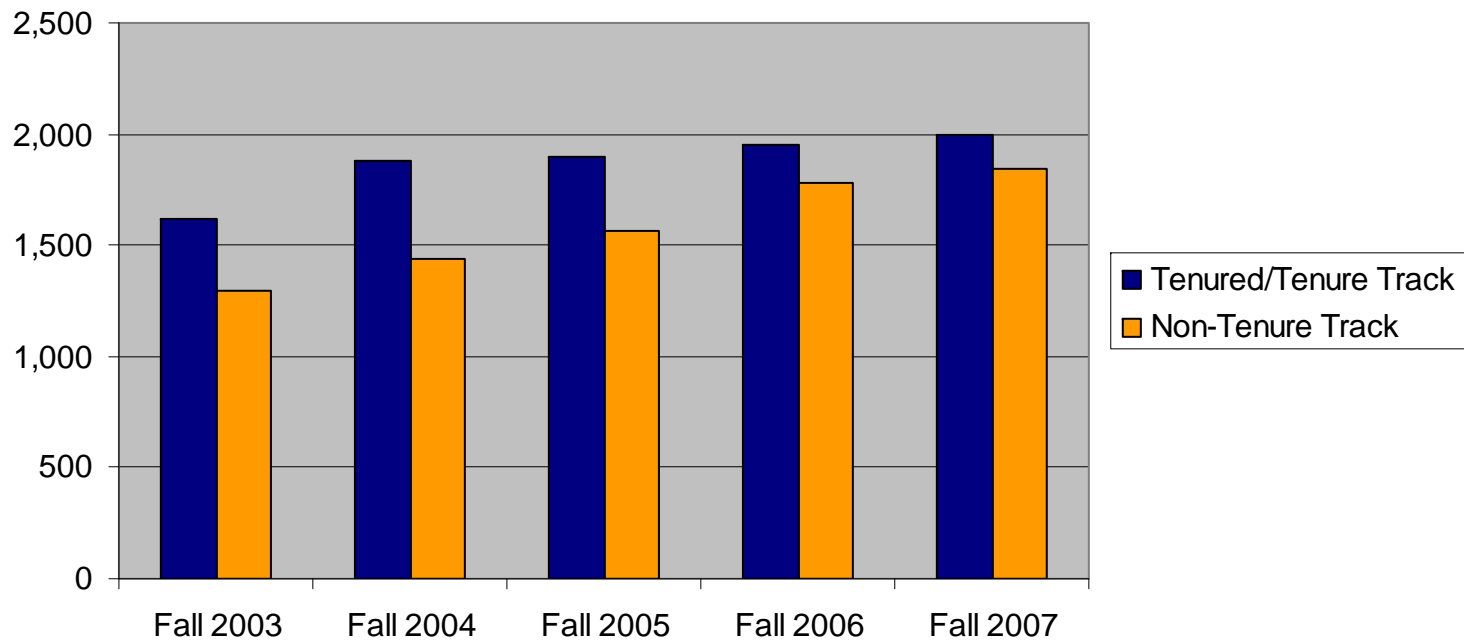
Semester Credit Hours (SCH) Generated in Courses Offered by Level and Course Type

Course Level	Course Type	Fall 2003		Fall 2004		Fall 2005		Fall 2005		Fall 2007	
		SCH	%	SCH	%	SCH	%	SCH	%	SCH	%
Developmental	Organized Classes	4,521	100.0	5,946	100.0	7,014	100.0	7,281	100.0	7,608	100.0
	Lab Classes	0	0.0	0	0.0	0	0.0	0	0.0	0	0.0
	Individual Instruction	0	0.0	0	0.0	0	0.0	0	0.0	0	0.0
	Total	4,521	100.0	5,946	100.0	7,014	100.0	7,281	100.0	7,608	100.0
Lower Division	Organized Classes	145,523	94.68	154,955	95.20	161,808	95.14	172,561	95.09	176,468	77.2
	Lab Classes	7,593	4.94	7,293	4.48	7,568	4.45	8,200	4.52	8,524	15.8
	Individual Instruction	584	0.38	518	0.32	704	0.41	711	0.39	692	7.0
	Total	153,700	100.0	162,766	100.0	170,080	100.0	181,472	100.0	185,684	100.0
Upper Division	Organized Classes	84,296	93.04	89,084	91.81	93,361	91.55	94,720	91.82	94,088	68.2
	Lab Classes	3,641	4.02	4,723	4.87	5,066	4.97	5,130	4.97	5,291	10.1
	Individual Instruction	2,662	2.94	3,225	3.32	3,547	3.48	3,304	3.20	3,229	21.7
	Total	90,599	100.0	97,032	100.0	101,974	100.0	103,154	100.0	102,608	100.0
Graduate Level	Organized Classes	18,128	89.64	18,748	87.16	18,744	85.63	19,591	84.63	19,131	39.7
	Lab Classes	198	0.98	277	1.29	358	1.64	463	2.00	479	1.6
	Individual Instruction	1,896	9.38	2,485	11.55	2,787	12.73	3,094	13.37	3,195	58.6
	Total	20,222	100.0	21,510	100.0	21,889	100.0	23,148	100.0	22,805	100.0
Total	Organized Classes	252,468	93.84	268,733	93.55	280,927	93.34	294,153	93.37	297,295	63.2
	Lab Classes	11,432	4.25	12,293	4.28	12,992	4.32	13,793	4.38	14,294	9.3
	Individual Instruction	5,142	1.91	6,228	2.17	7,038	2.34	7,109	2.26	7,116	27.4
	Total	269,042	100.0	287,254	100.0	300,957	100.0	315,055	100.0	318,705	100.0

Number of Courses by Level and Tenure Status

Level	Tenure Status	Fall 2003		Fall 2004		Fall 2005		Fall 2006		Fall 2007	
		#	%	#	%	#	%	#	%	#	%
Developmental	Non-Tenure Track	45	100.0	60	100.0	71	100.0	67	100.0	67	100.0
	Tenured/Tenure Track	0	0.0	0	0.0	0	0.0	0	0.0	0	0.0
	Total	45	100.0	60	100.0	71	100.0	67	100.0	67	100.0
Lower Division	Non-Tenure Track	718	66.30	789	67.44	860	73.07	996	76.91	1,041	78.6
	Tenured/Tenure Track	365	33.70	381	32.56	317	26.93	299	23.09	283	21.4
	Total	1,083	100.0	1,170	100.0	1,177	100.0	1,295	100.0	1,324	100.0
Upper Division	Non-Tenure Track	438	40.15	491	39.66	530	42.03	589	46.02	607	47.3
	Tenured/Tenure Track	653	59.85	747	60.34	731	57.97	691	53.98	676	52.7
	Total	1,091	100.0	1,238	100.0	1,261	100.0	1,280	100.0	1,283	100.0
Graduate Level	Non-Tenure Track	94	13.51	103	12.00	107	11.15	128	11.74	130	11.2
	Tenured/Tenure Track	602	86.49	755	88.00	853	88.85	962	88.26	1,033	88.8
	Total	696	100.0	858	100.0	960	100.0	1,090	100.0	1,163	100.0
Total	Non-Tenure Track	1,295	44.43	1,443	43.39	1,568	45.20	1,780	47.70	1,845	48.1
	Tenured/Tenure Track	1,620	55.57	1,883	56.61	1,901	54.80	1,952	52.30	1,992	51.9
	Total	2,915	100.0	3,326	100.0	3,469	100.0	3,732	100.0	3,837	100.0

Number of Courses Taught by Faculty Tenure Status



Enrollment in Courses Offered by Level and Tenure Status

Enrollment in Courses	Tenure Status	Fall 2003		Fall 2004		Fall 2005		Fall 2006		Fall 2007	
		#	%	#	%	#	%	#	%	#	%
Developmental	Non-Tenure Track	1,507	100.0	1,982	100.0	2,338	100.0	2,427	100.0	2,536	100.0
	Tenured/Tenure Track	0	0.0	0	0.0	0	0.0	0	0.0	0	0.0
	Total	1,507	100.0	1,982	100.0	2,338	100.0	2,427	100.0	2,536	100.0
Lower Division	Non-Tenure Track	29,890	56.35	33,848	60.73	37,949	65.44	42,793	69.07	46,271	78.6
	Tenured/Tenure Track	23,151	43.65	21,885	39.27	20,041	34.56	19,165	30.93	17,175	21.4
	Total	53,041	100.0	55,733	100.0	57,990	100.0	61,958	100.0	63,446	100.0
Upper Division	Non-Tenure Track	14,530	46.86	15,989	48.05	17,058	49.05	18,077	51.65	18,830	47.3
	Tenured/Tenure Track	16,474	53.14	17,285	51.95	17,719	50.95	16,920	48.35	16,001	52.7
	Total	31,004	100.0	33,274	100.0	34,777	100.0	34,997	100.0	34,831	100.0
Graduate Level	Non-Tenure Track	1,997	28.74	1,829	24.66	1,895	25.21	1,965	24.70	1,789	11.2
	Tenured/Tenure Track	4,951	71.26	5,589	75.34	5,621	74.79	5,989	75.30	6,058	88.8
	Total	6,948	100.0	7,418	100.0	7,516	100.0	7,954	100.0	7,847	100.0
Total	Non-Tenure Track	47,924	51.81	53,648	54.52	59,240	57.73	65,262	60.80	69,426	48.1
	Tenured/Tenure Track	44,576	48.19	44,759	45.48	43,381	42.27	42,074	39.20	39,234	51.9
	Total	92,500	100.0	98,407	100.0	10,2621	100.0	107,336	100.0	108,660	100.0

Semester Credit Hours in Courses Offered by Level and Tenure Status

	Tenure Status	Fall 2003		Fall 2004		Fall 2005		Fall 2006		Fall 2007	
		SCH	%	SCH	%	SCH	%	SCH	%	SCH	%
Developmental	Non-Tenure Track	4,521	100.0	5,946	100.0	7,014	100.0	7,281	100.0	7,608	100.0
	Tenured/Tenure Track	0	0.0	0	0.0	0	0.0	0	0.0	0	0.0
	Total	4,521	100.0	5,946	100.0	7,014	100.0	7,281	100.0	7,608	100.0
Lower Division	Non-Tenure Track	86,440	56.24	98,772	60.68	111,756	65.71	124,757	68.75	135,520	78.6
	Tenured/Tenure Track	67,260	43.76	63,994	39.32	58,324	34.29	56,715	31.25	50,164	21.4
	Total	153,700	100.0	162,766	100.0	170,080	100.0	181,472	100.0	185,684	100.0
Upper Division	Non-Tenure Track	43,040	47.51	46,720	48.15	50,256	49.28	52,806	51.19	54,725	47.3
	Tenured/Tenure Track	47,559	52.49	50,312	51.85	51,718	50.72	50,348	48.81	47,883	52.7
	Total	90,599	100.0	97,032	100.0	101,974	100.0	103,154	100.0	102,608	100.0
Graduate Level	Non-Tenure Track	5,984	29.59	5,460	25.38	5,707	26.07	5,933	25.63	5,338	11.2
	Tenured/Tenure Track	14,238	70.41	16,050	74.62	16,182	73.93	17,215	74.37	17,467	88.8
	Total	20,222	100.0	21,510	100.0	21,889	100.0	23,148	100.0	22,805	100.0
Total	Non-Tenure Track	139,985	52.03	156,898	54.62	174,733	58.06	190,777	60.55	203,191	48.1
	Tenured/Tenure Track	129,057	47.97	130,356	45.38	126,224	41.94	124,278	39.45	115,514	51.9
	Total	269,042	100.0	287,254	100.0	300,957	100.0	315,055	100.0	318,705	100.0

Number of Courses by Class Size - Fall 2003

Course Level	1	2-9	10-19	20-29	30-39	40-49	50-99	100+	Total
Undergraduate Courses	150	212	377	656	246	142	256	180	2,219
Graduate Courses	234	204	127	71	44	12	4	0	696
Total	384	416	504	727	290	154	260	180	2,915

Number of Courses by Class Size - Fall 2004

Course Level	1	2-9	10-19	20-29	30-39	40-49	50-99	100+	Total
Undergraduate Courses	186	215	432	766	270	157	263	179	2,468
Graduate Courses	325	255	137	85	44	6	6	0	858
Total	511	470	569	851	314	163	269	179	3,326

Number of Courses by Class Size - Fall 2005

Course Level	1	2-9	10-19	20-29	30-39	40-49	50-99	100+	Total
Undergraduate Courses	176	240	422	744	290	171	274	192	2,509
Graduate Courses	378	284	176	75	45	2	0	0	960
Total	554	524	598	819	335	173	274	192	3,469

Number of Courses by Class Size - Fall 2006

Course Level	1	2-9	10-19	20-29	30-39	40-49	50-99	100+	Total
Undergraduate Courses	214	242	467	759	296	171	289	204	2,642
Graduate Courses	451	324	184	89	35	6	1	0	1,090
Total	665	566	651	848	331	177	290	204	3,732

Number of Courses by Class Size - Fall 2007

Course Level	1	2-9	10-19	20-29	30-39	40-49	50-99	100+	Total
Undergraduate Courses	216	223	469	791	305	169	295	206	2,674
Graduate Courses	514	329	203	91	24	2	0	0	1,163
Total	730	552	672	882	329	171	295	206	3,837

Number of Courses by College (Fall 2007 College Structure)

College	Fall 2003		Fall 2004		Fall 2005		Fall 2006		Fall 2007	
	#	%	#	%	#	%	#	%	#	%
College of Architecture	65	2.2	77	2.3	89	2.6	86	2.3	94	2.4
College of Business	323	11.1	409	12.3	455	13.1	467	12.5	453	11.8
College of Education and Human Development	494	16.9	566	17.0	577	16.6	570	15.3	577	15.0
College of Engineering	184	6.3	214	6.4	228	6.6	244	6.5	259	6.8
College of Liberal and Fine Arts	1,025	35.2	953	28.7	978	28.2	1,048	28.1	1,069	27.9
College of Public Policy	66	2.3	77	2.3	80	2.3	99	2.7	104	2.7
College of Sciences	727	24.9	743	22.3	764	22.0	960	25.7	1,011	26.3
Freshman Initiative*	16	0.5	264	7.9	279	8.0	235	6.3	249	6.5
Honors**	15	0.5	23	0.7	19	0.5	23	0.6	21	0.5
Total	2,915	100.0	3,326	100.0	3,469	100.0	3,732	100.0	3,837	100.0

Semester Credit Hours (SCH) Generated by College (Fall 2007 College Structure)

College	Fall 2003		Fall 2004		Fall 2005		Fall 2006		Fall 2007	
	SCH	%	SCH	%	SCH	%	SCH	%	SCH	%
College of Architecture	5,288	2.2	6,612	2.3	7,518	2.6	8,004	2.3	8,425	2.4
College of Business	50,344	11.1	49,799	12.3	52,011	13.1	54,111	12.5	55,180	11.8
College of Education and Human Development	36,603	16.9	38,799	17.0	40,437	16.6	38,333	15.3	36,580	15.0
College of Engineering	8,909	6.3	9,728	6.4	10,414	6.6	10,119	6.5	9,811	6.8
College of Liberal and Fine Arts	98,992	35.2	93,364	28.7	98,144	28.2	104,617	28.1	103,651	27.9
College of Public Policy	5,924	2.3	6,871	2.3	8,255	2.3	7,998	2.7	7,578	2.7
College of Sciences	61,566	24.9	56,151	22.3	55,790	22.0	74,776	25.7	79,110	26.3
Freshman Initiative*	1,059	0.5	25,449	7.9	28,086	8.0	16,699	6.3	17,898	6.5
Honors**	357	0.5	481	0.7	302	0.5	398	0.6	472	0.5
Total	269,042	100.0	287,254	100.0	300,957	100.0	315,055	100.0	318,705	100.0

Course Enrollment by College (Fall 2007 College Structure)

College	Fall 2003		Fall 2004		Fall 2005		Fall 2006		Fall 2007	
	#	%	#	%	#	%	#	%	#	%
College of Architecture	1,485	2.2	1,847	2.3	2,104	2.6	2,225	2.3	2,362	2.2
College of Business	16,800	11.1	16,641	12.3	17,351	13.1	17,943	12.5	18,279	16.8
College of Education and Human Development	13,025	16.9	13,675	17.0	14,090	16.6	13,417	15.3	12,834	11.8
College of Engineering	3,157	6.3	3,448	6.4	3,676	6.6	3,653	6.5	3,611	3.3
College of Liberal and Fine Arts	33,323	35.2	31,429	28.7	32,907	28.2	35,052	28.1	34,700	31.9
College of Public Policy	1,977	2.3	2,294	2.3	2,753	2.3	2,667	2.7	2,522	2.3
College of Sciences	22,211	24.9	20,399	22.3	20,246	22.0	26,642	25.7	28,208	26.0
Freshman Initiative*	353	0.5	8,483	7.9	9,362	8.0	5,571	6.3	5,966	5.5
Honors**	169	0.5	191	0.7	132	0.5	166	0.6	178	0.2
Total	92,500	100.0	98,407	100.0	102,621	100.0	107,336	100.0	108,660	100.0

*Freshmen Initiative courses are defined as MTC, WRC, COR and LC courses designed to help freshmen students succeed at UTSA.

**Honors Courses are defined here as the discipline of HON, note that other courses have an honors grading system but are in disciplines in other colleges

Student to Faculty Ratio

	Fall 2003	Fall 2004	Fall 2005	Fall 2006	Fall 2007
Student/Faculty Ratio*	22.43	24.65	22.76	23.16	22.26

*Includes Teaching Assistants

	Fall 2003	Fall 2004	Fall 2005	Fall 2006	Fall 2007
Student/Faculty Ratio*	26.61	26.34	25.60	25.73	24.85

*Does not include Teaching Assistants

The reasoning behind using two calculations is that prior to Spring 2007 the Coordinating Board included the Teaching Assistants in the calculation of Student to Faculty Ratio. Beginning in Spring 2007 the new methodology does not include Teaching Assistants which is represented in the second table.

University of Texas of San Antonio For the Years 2003, 2004, 2005, 2006, 2007 Source: FY 2003 to 2007 Annual Financial Report

Sources	2003	2004	2005	2006	2007*
State of Texas					
State Appropriations	79,352,241	80,227,084	81,485,519	97,128,561	98,082,456
State Grants and Contracts - Restricted	8,766,143	7,410,469	8,330,620	10,945,134	9,572,742
Subtotal	88,118,384	87,637,553	89,816,139	108,073,695	107,655,198
Student & Parent	2003	2004	2005	2006	2007*
Tuition - net	39,234,144	52,971,628	67,582,320	73,663,916	85,504,512
Fees - net	23,185,036	35,031,003	42,548,473	44,960,670	57,960,012
Tuition and Fees (net of Scholarship Discounts and Allowances) (FN1)	62,419,180	88,002,631	110,130,793	118,624,586	143,464,524
Federal Government	2003	2004	2005	2006	2007*
Federal Grants and Contracts - Restricted	43,175,287	47,498,523	54,099,960	60,454,600	60,071,536
Institutional Resources	2003	2004	2005	2006	2007*
Endowment and Interest Income (FN2)	3,037,466	4,374,236	4,576,934	6,139,705	10,888,554
Local Government Grants - Restricted	539,674	476,261	453,006	437,461	515,213
Private Gifts and Grants - Restricted	5,941,592	4,730,166	5,360,748	4,939,033	6,396,886
Sales and Services	4,466,574	4,982,364	6,004,374	6,045,982	6,702,364
Net Auxiliary Enterprises (FN8)	5,341,759	4,439,350	13,598,361	14,234,457	15,145,902
Other Income (FN3)	3,476,087	1,992,010	3,973,154	3,621,898	2,414,995
Subtotal	22,803,152	20,994,387	33,966,577	35,418,536	42,063,914
Total Sources	216,516,003	244,133,094	288,013,469	322,571,417	353,255,172

Uses	2003	2004	2005	2006	2007*
Instruction	69,368,240	76,612,800	87,547,509	91,524,606	98,919,660
Research	11,520,298	12,865,558	18,322,683	24,086,411	25,194,470
Public Service	16,855,255	15,249,367	15,202,765	15,495,072	15,079,979
Academic Support	15,129,779	15,425,990	18,567,959	21,660,051	25,717,525
Student Services	14,781,539	16,208,601	19,251,482	22,396,373	24,516,956
Institutional Support	22,926,370	26,510,996	29,081,280	33,223,644	30,233,802
Operations and Maintenance of Plant	19,407,797	20,460,316	24,061,982	28,448,615	31,283,146
Scholarships and Fellowships	16,375,506	21,199,945	22,932,211	20,544,226	23,529,392
Auxiliary Enterprises	8,316,524	8,816,470	13,450,864	15,831,054	17,063,210
Capital Outlay	45,722,301	95,050,301	86,097,718	45,431,654	130,429,110
Other Expenses (FN3)	485,141	2,253,712	-	38,456	18,221
Total Uses	240,888,750	310,654,056	334,516,453	318,680,162	421,985,471
Other Sources / (Uses) of Funds	2003	2004	2005	2006	2007*
Mandatory and Non-mandatory Transfers (FN9)	-	(117,797)	1,253,152	(740,538)	(1,268,802)
Bond Proceeds Transfers (FN4)	33,883,750	45,167,681	76,343,337	48,305,033	93,069,594
Debt Service Payments (FN5)	(13,091,510)	(13,447,190)	(14,423,228)	(16,620,496)	(19,769,090)
Subtotal	20,792,240	31,602,694	63,173,261	30,943,999	72,031,702
Other Items Not for Current Operating Use	2003	2004	2005	2006	2007*
Unrealized Gains / (Losses) (FN6)	886,603	2,317,139	4,053,402	4,116,397	12,471,640
Additions to Permanent Endowments (FN7)	1,342,421	1,721,407	1,938,474	4,946,253	3,986,629
Subtotal	2,229,024	4,038,546	5,991,876	9,062,650	16,458,269
Total Sources Over / (Under) Uses	(1,351,483)	(30,879,722)	22,662,153	43,897,904	19,759,672
	(FN10)	(FN11)	(FN12)	(FN13)	(FN14)
	-	-	-	-	-
*FY2007 is still in the process of being checked by UT System. These numbers could still change.					

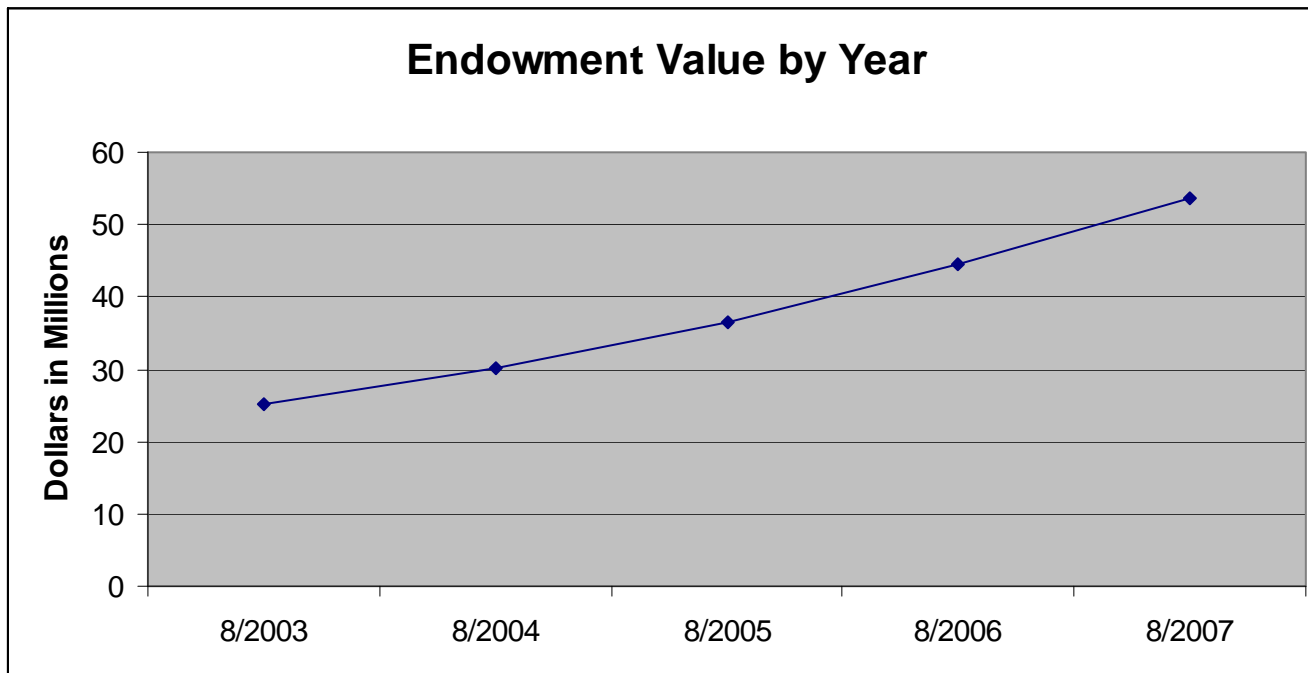
SUMMARY WORKSHEET FOOTNOTES:	
FN1:	Scholarship Discounts and Allowances are scholarships, fellowships and grants applied to tuition. The discount eliminates tuition revenue that is paid for by University resources which are recorded as revenue elsewhere on the financial statements (i.e. federal and state contracts and grants revenues). In addition, Scholarship Discounts and Allowances eliminate tuition revenue that is exempted from payment due to tuition exemptions approved by the Texas Legislature.
FN2:	Endowment and Interest Income includes interest income and endowment payouts.
FN3:	Other Income is primarily Other Operating and Other Nonoperating Revenues from the AFR. Other Expenses is primarily Other Nonoperating Expenses from the AFR.
FN4:	Bond Proceeds are funds received from the sale of bonds and commercial paper used to finance capital projects. This amount includes actual proceeds and accrued or anticipated proceeds to be transferred from System.
FN5:	Debt Service Payments are transfers to System to pay debt used to finance capital projects.
FN6:	Unrealized Gains / (Losses) represent the increase in the Fair Market Value of Investments and Endowments. Unrealized Gains / (Losses) are accrued as non-cash transactions; therefore, funds are not actually received for this revenue stream. Accordingly, this revenue is not cash revenue and cannot be used by the University to fund operations.
FN7:	Additions to Permanent Endowments are additions to endowment principal. This revenue is restricted for investment purposes only and can not be used to fund operations. Only interest income from these endowments, which is reported on the Endowment and Investment Income line of this report, can be used by the University to fund operations.
FN8:	Auxiliary Enterprises include athletics, housing and food, student services, and parking and transportation. Auxiliary Enterprises are required to be self-supporting, and therefore must operate on the funds they generate.
FN9:	Mandatory and non-mandatory transfers includes transfers between funds, transfers between the University System and institutions and transfers to and from other state agencies. In total, all transfers between funds net to zero with the exception of any amounts transferred between the University System, between other institutions, or to and from another state agency. There are no transfers of education and general funds provided by the State of Texas to restricted or auxiliary fund groups. Transfers between education and general funds and designated funds are related to Texas Public Education Grant as provided by the State of Texas.

FN10:	Of the net decrease of (\$1,351,483) approximately (\$3,580,507) represents uses not covered by the sources received in the current year. The remaining \$2,229,024 represents non-expendable funds from unrealized gains and additions to permanent endowments of approximately \$886,603 and \$1,342,421 respectively. Unrealized gains and additions to permanent endowments do not contribute to the availability of the institution's operating cash as discussed in FN6 and FN7 above.
FN11:	Of the net decrease of (\$30,879,722) approximately (\$34,918,268) represents uses not covered by the sources received in the current year. The remaining \$4,038,546 represents non-expendable funds from unrealized gains and additions to permanent endowments of approximately \$2,317,139 and \$1,721,407 respectively. Unrealized gains and additions to permanent endowments do not contribute to the availability of the institution's operating cash as discussed in FN6 and FN7 above.
FN12:	Of the net increase of \$22,662,153 approximately \$16,670,277 represents sources received but not yet expended. These sources are fully committed to program expenditures and capital disbursements. The remaining \$5,991,876 represents non-expendable funds from unrealized gains and additions to permanent endowments of approximately \$4,053,402 and \$1,938,474 respectively. Unrealized gains and additions to permanent endowments do not contribute to the availability of the institution's operating cash as discussed in FN6 and FN7 above.
FN13:	Of the net increase of \$43,897,904 approximately \$34,884,315 represents sources received but not yet expended. These sources are fully committed to program expenditures and capital disbursements. The remaining \$9,062,650 represents non-expendable funds from unrealized gains and additions to permanent endowments of approximately \$4,116,397 and \$4,946,253 respectively. Unrealized gains and additions to permanent endowments do not contribute to the availability of the institution's operating cash as discussed in FN6 and FN7 above.
FN14:	Of the net increase of \$19,759,672 approximately \$3,301,403 represents sources received but not yet expended. These sources are fully committed to program expenditures and capital disbursements. The remaining \$16,458,269 represents non-expendable funds from unrealized gains and additions to permanent endowments of approximately \$12,471,640 and \$3,986,629 respectively. Unrealized gains and additions to permanent endowments do not contribute to the availability of the institution's operating cash as discussed in FN6 and FN7 above.

UTSA Endowment Market Value

Value as of:	Market Value	Dollar Increase from Previous Year	Percentage Increase from Previous Year
8/31/2007	\$53,765,351.00	\$9,335,285.00	21.01%
8/31/2006	\$44,430,066.00	\$8,043,951.00	22.11%
8/31/2005	\$36,386,115.00	\$6,168,156.00	20.41%
8/31/2004	\$30,217,959.00	\$5,070,439.00	20.16%
8/31/2003	\$25,147,520.00	\$3,347,799.00	15.36%

As of 8/31/2007 UTSA had a total of 257 Endowments
 33 Chair & Professorship Endowments
 185 Scholarship Endowments
 39 Miscellaneous Endowments
 (Program support, Faculty/Staff support, etc.)



For more information about UTSA’s Endowment please contact the Development Office at (210) 458-4130.

Sponsored Program Funds

Sponsored Program Funds Expended by Fiscal Year

UTSA Area	FY 2003	FY 2004	FY 2005	FY 2006	FY 2007
College of Architecture	13,805	10,482	24,544	25,094	22,500
College of Business	654,837	377,606	539,432	491,397	526,031
College of Education and Human Development	1,759,607	2,255,549	2,523,790	2,916,415	3,304,360
College of Engineering	1,042,885	2,199,195	1,976,641	3,369,766	3,241,806
Honor's College	0	0	0	30,085	231906
College of Liberal and Fine Arts	1,011,501	656,515	994,391	455,765	270,636
College of Public Policy	47,051	42,662	10,301	9,809	10,007
College of Sciences	10,103,137	10,861,657	10,738,837	14,970,843	10,461,691
Centers and Institutes	11,910,685	11,667,751	17,885,605	22,995,250	26,273,021
UTSA Programs	4,504,871	4,912,867	4,510,181	4,135,206	3,741,656
Miscellaneous	1,818,218	656,460	260,149	270,870	112,424
Total	32,866,595	33,640,746	39,463,871	49,779,327	48,196,038

Sponsored Program Funds Awarded by Fiscal Year (Will Be Updated Soon)

UTSA Area	FY 2002	FY 2003	FY 2004	FY 2005	FY 2006
College of Architecture	10,000		2,000		18,330
College of Business	2,710,610	380,168	336,806	333,531	407,779
College of Education and Human Development	1,183,305	2,473,886	2,047,293	2,929,377	3,858,458
College of Engineering	783,967	925,137	3,335,664	2,148,852	3,056,456
Honor's College					40,000
College of Liberal and Fine Arts	645,956	1,463,445	736,775	693,506	188,576
College of Public Policy	103,778	0	10,000	8,000	8,097
College of Sciences	9,485,965	8,511,169	9,204,668	9,651,326	6,208,206
Centers and Institutes	7,409,972	12,209,456	12,810,204	20,562,236	21,328,063
UTSA Programs	4,552,866	3,814,144	3,684,546	3,802,687	3,040,012
Miscellaneous	2,007,255	445,556	242,734	452,344	293,396
Total	28,893,674	30,222,961	32,410,690	40,581,860	38,447,373

For more information about UTSA’s Sponsored Program Funds Expended please contact the Office of Grants and Contracts Financial Services at (210) 458-4229.

For more information about UTSA’s Sponsored Program Funds Awarded please contact the Office of Sponsored Programs at (210) 458-4340.

<i>Student Financial Aid by Type of Award (02-03 to 06-07)</i>					
Category	2002-03	2003-04	2004-05	2005-06	2006-07
Grants					
Federal Pell Grant					
Total awarded (\$)	18,024,456	22,130,114	24,443,926	24,481,251	23,818,874
Number of awards	7,262	8,624	9,534	9,599	9,245
Average award (\$)	2,482	2,566	2,564	2,550	2,576
Federal SEOG					
Total awarded (\$)	837,782	631,643	938,987	1,190,455	1,317,555
Number of awards	883	1,080	523	1,027	1,348
Average award (\$)	949	585	1,795	1,159	977
Federal ACG					
Total awarded (\$)					900,823
Number of awards					1,206
Average award (\$)					747
Federal SMART					
Total awarded (\$)					865,430
Number of awards					266
Average award (\$)					3,253
Texas Public Education Grant (TPEG)					
Total awarded (\$)	2,951,214	4,391,632	4,998,864	4,062,298	4,502,868
Number of awards	3,585	3,481	3,244	3,641	3,783
Average award (\$)	823	1,262	1,541	1,116	1,190
Toward Excellence - Access and Success Grant					
Total awarded (\$)	6,198,221	5,724,220	5,647,070	8,121,505	6,757,150
Number of awards	2,355	1,970	1,683	2,088	1,544
Average award (\$)	2,632	2,906	3,355	3,890	4,376

Student Financial Aid by Type of Award (02-03 to 06-07) continued

Category	2002-03	2003-04	2004-05	2005-06	2006-07
State Grant					
Total awarded (\$)	54,387	55,341	60,111	87,115	91,834
Number of awards	93	43	87	105	91
Average award (\$)	585	1,287	691	830	1,009
Federal Grant					
Total awarded (\$)	25,542	29,947	31,141	63,908	54,173
Number of awards	63	31	57	65	126
Average award (\$)	405	966	546	983	430
Other Grant					
Total awarded (\$)	154,905	609,815	3,185,575	2,606,707	4,501,780
Number of awards	492	745	2,596	3,736	2,687
Average award (\$)	315	819	1,227	698	1,675
Total Grants (\$)	28,246,506	33,572,711	39,305,673	40,613,239	42,810,487
Scholarships					
State					
Total awarded (\$)	120,820	39,105	49,407	61,047	35,410
Number of awards	37	19	24	33	28
Average award (\$)	3,265	2,058	2,059	1,850	1,265
Institutional					
Total awarded (\$)	3,531,123	5,077,798	6,150,974	6,273,784	6,530,771
Number of awards	1,156	1,291	1,547	1,601	1,611
Average award (\$)	3,055	3,933	3,976	3,919	4,054
Endowment					
Total awarded (\$)	185,764	309,952	378,247	375,568	449,425
Number of awards	172	314	327	305	339
Average award (\$)	1,080	987	1,157	1,231	1,326

Student Financial Aid by Type of Award (02-03 to 06-07) continued

Category	2002-03	2003-04	2004-05	2005-06	2006-07
Outside					
Total awarded (\$)	1,686,117	2,049,105	2,470,096	3,107,114	3,203,316
Number of awards	1,270	1,508	1,678	1,746	1,859
Average award (\$)	1,328	1,359	1,472	1,780	1,723
Private					
Total awarded (\$)	626,579	653,729	838,321	1,003,352	961,317
Number of awards	502	507	538	619	519
Average award (\$)	1,248	1,289	1,558	1,621	1,852
Athletic					
Total awarded (\$)	1,269,028	1,395,251	1,590,394	1,709,242	1,870,341
Number of awards	200	206	209	239	268
Average award (\$)	6,345	6,773	7,610	7,152	6,979
Total Scholarships (\$)	7,419,431	9,524,941	11,477,438	12,530,107	13,050,579
Loans					
Perkins Loan					
Total Awarded (\$)	530,712	491,603	453,014	465,968	298,540
Number of awards	291	239	226	267	159
Average award (\$)	1,824	2,057	2,004	1,745	1,878
Federal Stafford Loan					
Total Awarded (\$)	63,007,560	80,030,702	95,530,129	103,095,220	101,260,726
Number of awards	11,572	14,155	15,947	16,661	16,126
Average award (\$)	5,445	5,654	5,990	6,188	6,279
Parent Loan for Under-graduate Students (PLUS)					
Total Awarded (\$)	1,933,648	3,815,503	5,467,393	11,736,134	13,658,578
Number of awards	328	541	680	1,357	1,522
Average award (\$)	5,895	7,053	8,040	8,649	8,974

Student Financial Aid by Type of Award (02-03 to 06-07) continued

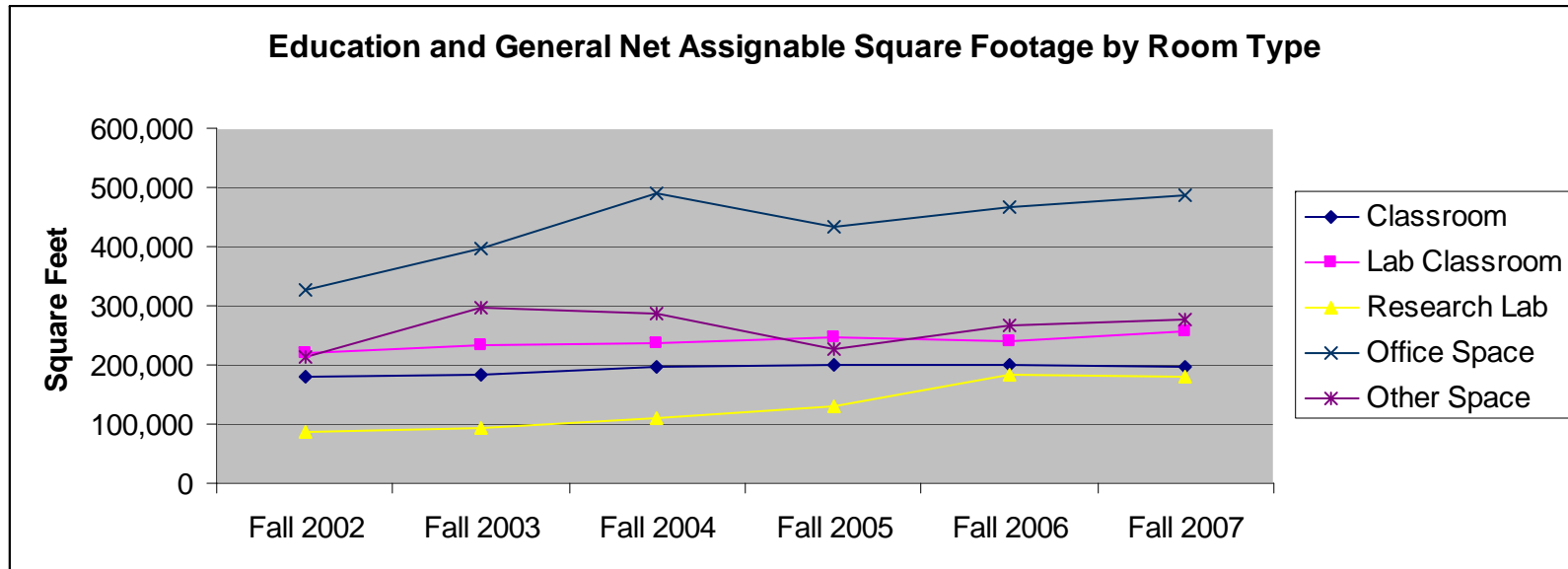
Category	2002-03	2003-04	2004-05	2005-06	2006-07
Alternative Loan					
Total Awarded (\$)	2,922,148	4,450,899	6,935,191	4,504,349	6,284,129
Number of awards	573	833	1,118	787	878
Average award (\$)	5,100	5,343	6,203	5,723	7,157
B-On-Time Loan					
Total Awarded (\$)	0	112,971	997,129	871,810	772,341
Number of awards	0	39	307	231	189
Average award (\$)	0	2,897	3,248	3,774	4,086
Total Loans (\$)	68,394,068	88,901,678	109,382,856	120,673,481	122,274,313
Work Study					
Federal					
Total Awarded (\$)	945,203	830,410	1,175,775	1,157,060	1,195,850
Number of awards	400	381	487	523	525
Average award (\$)	2,363	2,180	2,414	2,212	2,278
State					
Total Awarded (\$)	68,124	181,401	192,679	152,016	178,349
Number of awards	31	105	123	122	109
Average award (\$)	2,198	1,728	1,566	1,246	1,636
Institutional					
Total Awarded (\$)	0	218,960	263,802	469,612	457,310
Number of awards	0	193	278	1,029	1,059
Average award (\$)	0	1,135	949	456	432
Total Work Study (\$)	1,013,327	1,230,770	1,632,256	1,778,688	1,831,508
Source: Financial Aid Office.					

For more information about UTSA's Financial Aid, please contact the Office of Financial Aid at (210) 458-8000.

UTSA Facilities Information

Education and General Net Assignable Square Footage by Room Type

Room Type	Fall 2003		Fall 2004		Fall 2005		Fall 2006		Fall 2007	
	#	%	#	%	#	%	#	%	#	%
Classroom	180,932	17.6	183,193	15.3	197,794	15.0	200,600	16.2	198,796	14.7
Lab Classroom	220,347	21.5	232,482	19.4	236,029	17.9	246,485	19.9	241,342	17.8
Research Lab	86,438	8.4	92,142	7.7	110,720	8.4	130,842	10.6	184,594	13.6
Office Space	325,458	31.7	395,546	33.0	488,432	37.0	432,792	35.0	466,223	34.4
Other Space	213,903	20.8	295,168	24.6	288,210	21.8	227,194	18.4	266,389	19.6
Total	1,027,078	100.0	1,198,531	100.0	1,321,184	100.0	1,237,913	100.0	1,357,344	100.0



UTSA Classroom Utilization by Fall Semester

	Fall 2003	Fall 2004	Fall 2005	Fall 2006	Fall 2007
Number of Classrooms	155	144	146	145	142
Average Weekly Hours of Use	33.9	40.7	40.8	42.2	43.8

Class Laboratory Utilization by Fall Semester

	Fall 2003	Fall 2004	Fall 2005	Fall 2006	Fall 2007
Number of Classrooms	76	54	52	55	58
Average Weekly Hours of Use	22.8	30.5	31.7	31.4	31.0

Area and Capital Investment by Campus for Fall 2007

	Gross Area		Assignable Area		Education and General Square Footage		Capital Investment	
	#	%	#	%	#	%	#	%
Campus								
1604	2,498,515	74.7	1,329,092	73.8	1,086,386	80.0	316,025,139	74.3
Downtown	656,891	19.7	307,066	17.0	254,299	18.7	98,148,745	23.1
Institute of Texan Cultures	187,909	5.6	165,608	9.2	16,659	1.2	11,238,829	2.6
Total UTSA	3,343,315	100.0	1,801,766	100.0	1,357,344	100.0	425,412,713	100.0

Definitions and Abbreviations by Section:

Student Enrollment

Course Load: Determined by the number of Semester Credit Hours a student is enrolled in for the semester. Undergraduates must be enrolled in 12 or more SCH to be counted as full time while Post-Bac/Masters/Doctoral students must be enrolled in nine or more SCH to be counted as full time. All students who do not meet these requirements are part time. This is the Integrated Postsecondary Education Database System (IPEDS) definition.

Fall 2006 College Structure: The organization of the Colleges is based on the departments which were in each college in Fall 2006. This structure is used throughout the Fact Book to show trends based on a single college structure.

IPEDS: Integrated Postsecondary Educational Data System

Semester Credit Hour (SCH): Equal to the amount of credit a course is worth, most courses are worth three SCHs.

New Student Information and Success

First Time Doctoral Student: A student who has never enrolled at the Doctoral level at any other public college in the State of Texas.

First Time Masters Student: A student who has never enrolled at the Masters level at any other public college in the State of Texas.

First Time Undergraduate: A student who has never enrolled at the Undergraduate level at any other public college in the State of Texas.

Minority: Students who are classified as African-American, Hispanic, Asian or Pacific Islander, American Indian or Alaskan Native.

Non-Minority: Students who are classified as White, International, or Unknown.

Transfer Undergraduates: Students who have previously enrolled at another public university in Texas and have transferred hours to UTSA.

UT Austin CAP Student: A student who would like to attend the University of Texas at Austin so they meet specific requirements at UTSA and intend to transfer to the University of Texas at Austin after one year. These students are not included in the Graduation and Retention cohort since they do not intend to get a degree from UTSA.

Faculty and Staff Information -

All Faculty Full Time Equivalent (FTE): The sum of all of the percent time appointments for the faculty.

FTE: Full Time Equivalent.

Instructional Faculty Full Time Equivalent (FTE): The sum of the percent time appointments for the faculty which directly relate to the instruction function.

Course Information -

Course Type -

Organized Classes: All courses which are Lecture and Seminar style courses based on the Coordinating Board Class Report

Lab Classes: Classes which are defined as being a laboratory style course based on the Coordinating Board Class Report

Individual Instruction: Classes include the Independent Study, Private Lesson, Practicum and Individualized modes of instruction as defined by the Coordinating Board Class Report

Course Level-

Developmental – Courses which are designed to help students transition into college coursework

Lower Division – Defined by the Coordinating Board Course Inventory as either a level one or level two course, note that this is not necessarily based on the course number.

Upper Division- Defined by the Coordinating Board Course Inventory as either a level three or level four course, note that this is not necessarily based on the course number.

Graduate Level - Defined by the Coordinating Board Course Inventory as any course level higher than a level four course, note that this is not necessarily based on the course number.

Financial and Facilities Information

Assignable Area: The sum of all areas within the interior walls of rooms on all floors of a building assigned to, or available for assignment to, an occupant or use, excluding unassigned space. This is also referred to as net assignable square feet (NASF).

Education and General (E&G): Space used for teaching, research, or the preservation of knowledge, including the proportional share used for those activities in any building or facility used jointly with auxiliary enterprise, or space that is permanently unassigned. E&G space is supported by state appropriations.

Gross Area: The sum of all square feet of floor areas within the outside faces of a building's exterior walls. This includes the areas, finished and unfinished, on all floors of an enclosed structure, i.e., within the environmentally controlled envelope, for all stories or areas which have floor surfaces.