



New
Undergraduates

The UTSA Fact Book
Office of Institutional Research

New Student Applications

The Applied, Accepted, and Enrolled information comes from the Coordinating Board Admissions file (CBM00B), this file contains only the Summer and Fall applications for each year. Only students who have never applied at the level are included in this information. Note that although many new students enter UTSA each year only students who are first time students seeking a degree at UTSA are included in the Cohort for graduation and retention information. For more information on this topic please contact the Office of Institutional Research at (210) 458-4706

Race/Ethnicity Reporting Changes

As of Summer 2010 a new Race/Ethnicity reporting schema has been adopted based on Federal requirements. Students now have the choice to identify multiple races on the forms collected by the University of Texas at San Antonio. This information is stored as the student has selected, however for reporting purposes a single category has been used. If a student was an International student they would be assigned the International category. If a student is Hispanic, regardless of race indicated, they were assigned to the Hispanic category. Students who chose multiple races were assigned to the Two or more races category. Finally students who chose only one race were assigned to the race category they had chosen. If a student was not International, not Hispanic and did not chose any Race category they were assigned to the Unknown category. In addition to this update the former Asian/Pacific Islander category has now been separated into two categories, one is Asian and the other is Native Hawaiian or Pacific Islander.

New Category

White Non-Hispanic

Black Non-Hispanic

Hispanic

Asian

Native Hawaiian or Other Pacific Islander

American Indian or Alaskan Native

Two or more races

International

Unknown or Not Reported

Old Category

White Non-Hispanic

Black Non-Hispanic

Hispanic

Asian or Pacific Islander

Asian or Pacific Islander

American Indian or Alaskan Native

N/A

International

Unknown or Not Reported

First Time Undergraduates Applied, Accepted, and Enrolled

	2006	2007	2008	2009	2010
Applied	11,293	11,475	13,259	12,270	13,603
Accepted	10,122	10,163	10,949	10,426	10,724
%Accepted	90.8	93.0	88.0	86.9	83.2
Enrolled	4,775	4,837	4,849	4,883	5,095
%Enrolled	47.2	47.6	44.3	46.8	47.5

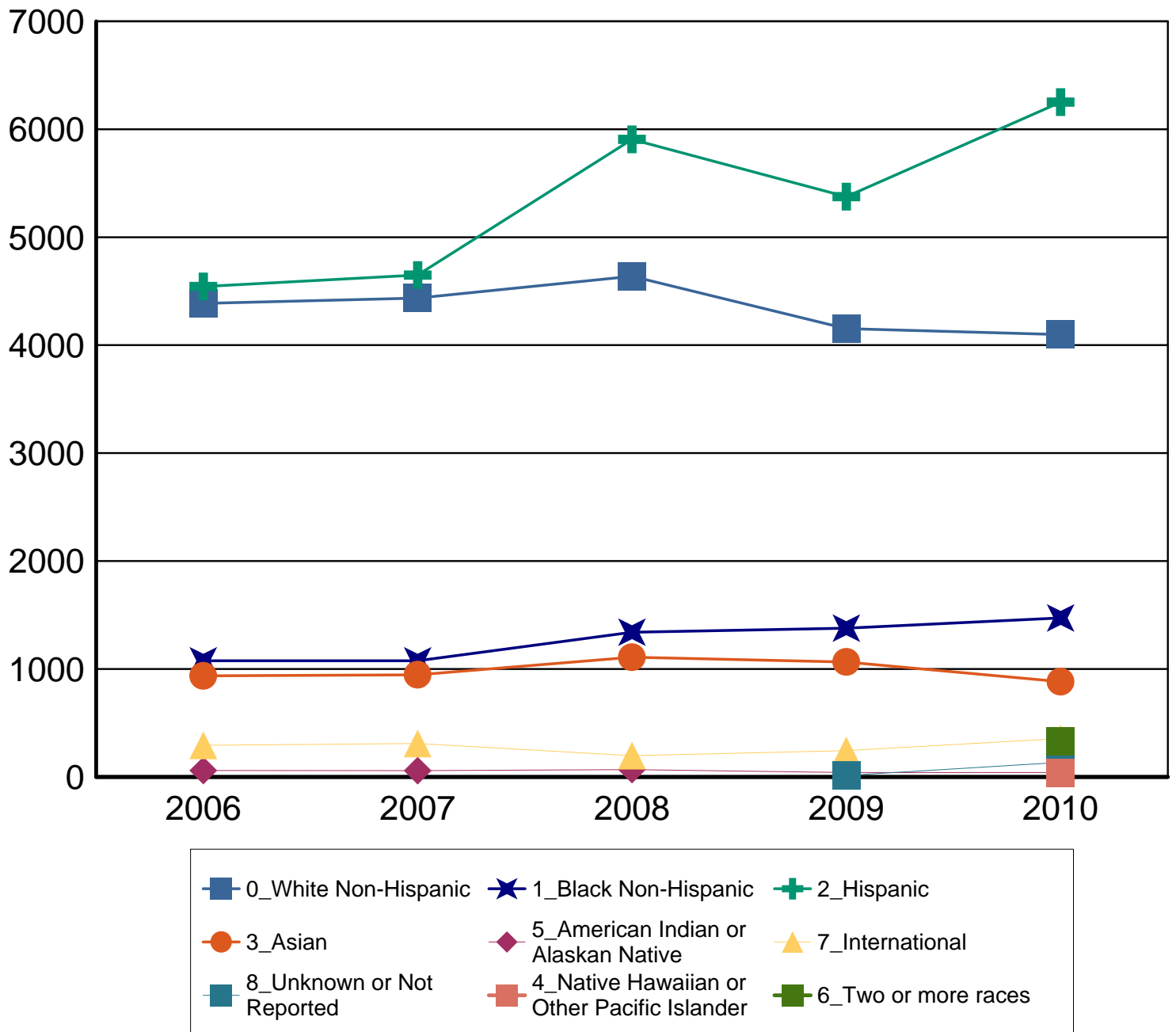
First Time Undergraduates Applied, Accepted, and Enrolled by Ethnicity

		2006	2007	2008	2009	2010
White Non-Hispanic	Applied	4,386	4,436	4,638	4,153	4,098
	Accepted	4,100	4,023	4,071	3,730	3,516
	%Accepted	95.1	96.5	93.4	92.9	91.1
	Enrolled	2,095	2,040	1,921	1,840	1,681
	%Enrolled	51.1	50.7	47.2	49.3	47.8
Black Non-Hispanic	Applied	1,076	1,076	1,341	1,378	1,473
	Accepted	874	872	1,005	1,025	969
	%Accepted	81.9	83.7	78.3	75.6	69.3
	Enrolled	439	438	494	559	550
	%Enrolled	50.2	50.2	49.2	54.5	56.8
Hispanic	Applied	4,543	4,649	5,906	5,375	6,251
	Accepted	3,971	4,081	4,683	4,451	4,751
	%Accepted	88.3	91.5	85.3	84.1	80.1
	Enrolled	1,647	1,778	1,836	1,850	2,174
	%Enrolled	41.5	43.6	39.2	41.6	45.8
Asian	Applied	936	946	1,109	1,065	882
	Accepted	874	864	972	964	747
	%Accepted	94.8	96.0	92.4	92.2	90.0
	Enrolled	462	433	492	505	345
	%Enrolled	52.9	50.1	50.6	52.4	46.2
Native Hawaiian or Other Pacific Islander	Applied	0	0	0	0	36
	Accepted	0	0	0	0	27
	%Accepted	0.0	0.0	0.0	0.0	77.1
	Enrolled	0	0	0	0	18
	%Enrolled	0.0	0.0	0.0	0.0	66.7
American Indian or Alaskan Native	Applied	59	58	68	41	41
	Accepted	51	54	60	33	31
	%Accepted	87.9	96.4	95.2	82.5	81.6
	Enrolled	31	26	30	12	11
	%Enrolled	60.8	48.1	50.0	36.4	35.5
Two or more races	Applied	0	0	0	0	331
	Accepted	0	0	0	0	269
	%Accepted	0.0	0.0	0.0	0.0	85.1
	Enrolled	0	0	0	0	126
	%Enrolled	0.0	0.0	0.0	0.0	46.8

		2006	2007	2008	2009	2010
International	Applied	293	310	197	244	356
	Accepted	252	269	158	213	315
	%Accepted	86.6	88.5	81.9	91.8	90.3
	Enrolled	101	122	76	109	137
	%Enrolled	40.1	45.4	48.1	51.2	43.5
Unknown or Not Reported	Applied	0	0	0	14	135
	Accepted	0	0	0	10	99
	%Accepted	0.0	0.0	0.0	71.4	78.6
	Enrolled	0	0	0	8	53
	%Enrolled	0.0	0.0	0.0	80.0	53.5
Applied	11,293	11,475	13,259	12,270	13,603	
Accepted	10,122	10,163	10,949	10,426	10,724	
% Accepted	90.8	93.0	88.0	86.9	83.2	
Enrolled	4,775	4,837	4,849	4,883	5,095	
% Enrolled of Accepted	47.2	47.6	44.3	46.8	47.5	

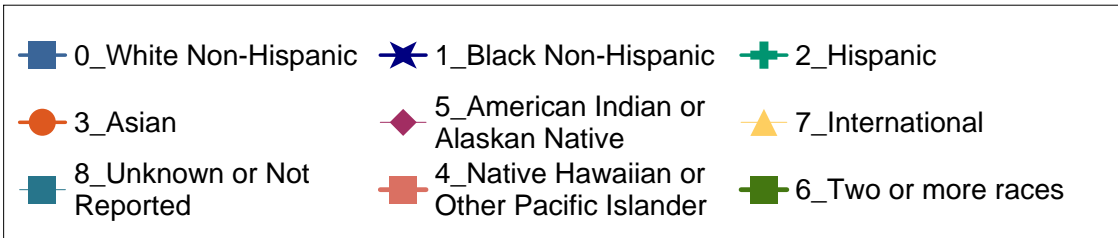
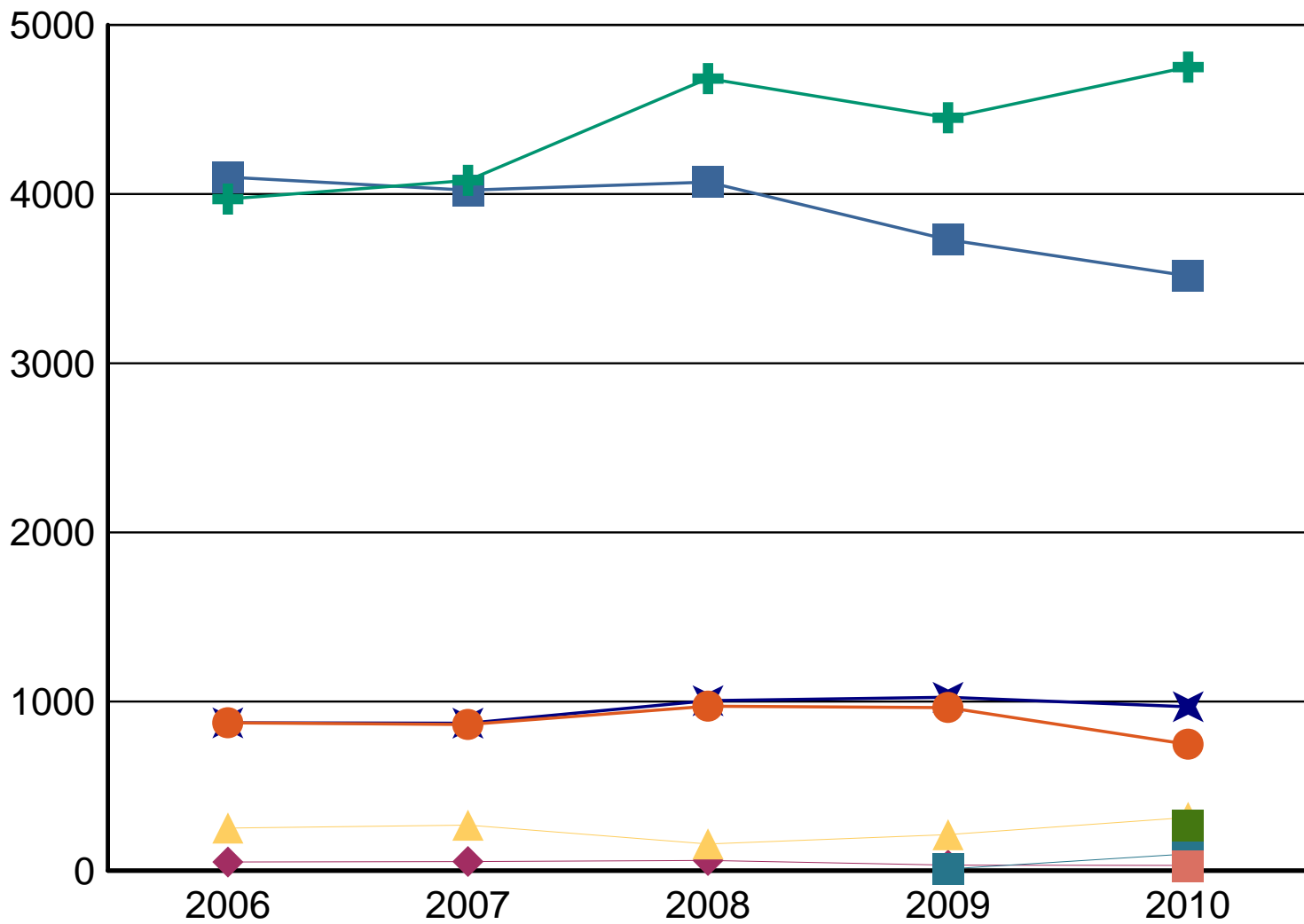
For details on new Race/Ethnicity categories please see page one of this document

Number of New First Time Undergraduates Applied



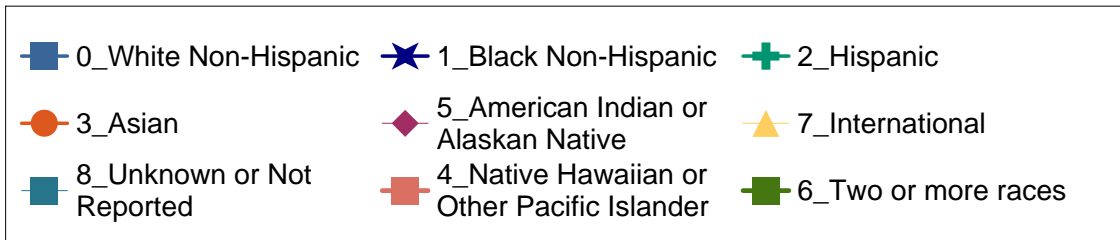
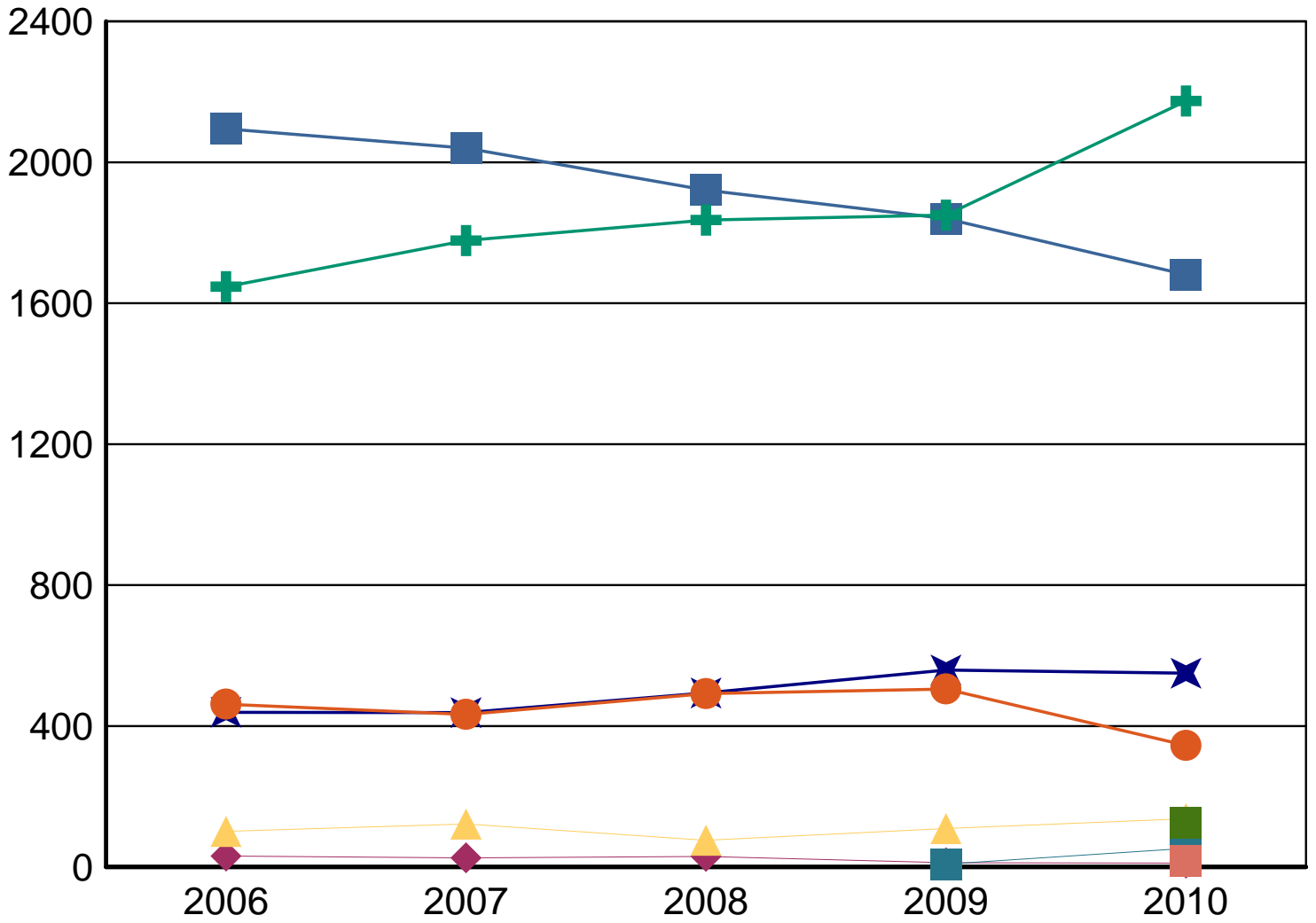
For details on new Race/Ethnicity categories please see page one of this document

Number of New First Time Undergraduates Accepted



For details on new Race/Ethnicity categories please see page one of this document

Number of New First Time Undergraduates Enrolled



First Time Undergraduates Applied, Accepted, and Enrolled by Gender

		2006	2007	2008	2009	2010
Female	Applied	6,103	5,930	7,205	6,414	6,841
	Accepted	5,517	5,272	5,962	5,481	5,339
	%Accepted	91.5	93.6	88.4	87.5	83.2
	Enrolled	2,447	2,309	2,470	2,400	2,359
	%Enrolled	44.4	43.8	41.4	43.8	44.2
Male	Applied	5,190	5,545	6,054	5,856	6,762
	Accepted	4,605	4,891	4,987	4,945	5,385
	%Accepted	90.0	92.3	87.5	86.3	83.3
	Enrolled	2,328	2,528	2,379	2,483	2,736
	%Enrolled	50.6	51.7	47.7	50.2	50.8
Total		11,293	11,475	13,259	12,270	13,603
		10,122	10,163	10,949	10,426	10,724
		90.8	93.0	88.0	86.9	83.2
		4,775	4,837	4,849	4,883	5,095
		47.2	47.6	44.3	46.8	47.5

First Time Undergraduates Applied, Accepted, and Enrolled by Economic Region

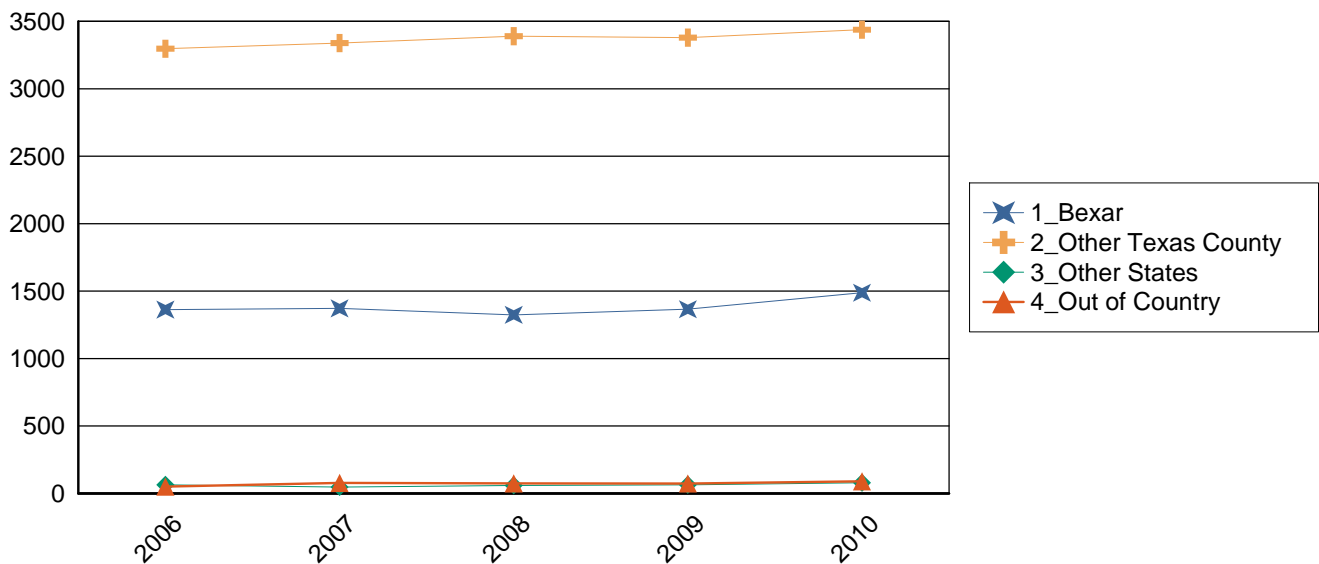
		2006	2007	2008	2009	2010
Central Texas	Applied	1,382	1,525	1,742	1,765	1,972
	Accepted	1,222	1,328	1,435	1,479	1,534
	%Accepted	89.7	91.9	87.6	85.5	83.0
	Enrolled	636	692	705	747	728
	%Enrolled	52.0	52.1	49.1	50.5	47.5
Gulf Coast	Applied	2,947	3,106	3,616	3,367	3,757
	Accepted	2,695	2,761	3,075	2,883	3,022
	%Accepted	93.3	94.9	90.7	88.2	84.8
	Enrolled	1,320	1,333	1,422	1,433	1,419
	%Enrolled	49.0	48.3	46.2	49.7	47.0
High Plains	Applied	39	46	39	40	25
	Accepted	35	40	32	37	22
	%Accepted	89.7	88.9	86.5	97.4	88.0
	Enrolled	16	18	10	15	11
	%Enrolled	45.7	45.0	31.3	40.5	50.0
Metroplex	Applied	625	603	713	594	790
	Accepted	567	527	610	516	588
	%Accepted	91.9	92.3	90.9	90.2	84.2
	Enrolled	243	245	235	227	246
	%Enrolled	42.9	46.5	38.5	44.0	41.8
Northwest Texas	Applied	57	45	35	40	41
	Accepted	54	41	30	34	34
	%Accepted	96.4	93.2	90.9	89.5	87.2
	Enrolled	23	17	14	13	17
	%Enrolled	42.6	41.5	46.7	38.2	50.0
Not in Texas	Applied	348	417	453	433	486
	Accepted	297	347	363	345	380
	%Accepted	86.3	88.7	82.9	83.1	80.0
	Enrolled	115	126	135	138	169
	%Enrolled	38.7	36.3	37.2	40.0	44.5
South Texas	Applied	5,468	5,354	6,195	5,656	6,040
	Accepted	4,865	4,780	5,036	4,799	4,780
	%Accepted	89.8	92.5	86.7	86.3	82.9
	Enrolled	2,269	2,271	2,185	2,172	2,356
	%Enrolled	46.6	47.5	43.4	45.3	49.3
Southeast Texas	Applied	119	115	155	121	123
	Accepted	109	104	130	104	83
	%Accepted	94.0	94.5	91.5	86.7	70.9
	Enrolled	54	48	54	47	38
	%Enrolled	49.5	46.2	41.5	45.2	45.8
Upper East Texas	Applied	36	33	26	31	38
	Accepted	33	29	21	30	30
	%Accepted	100.0	96.7	87.5	100.0	85.7
	Enrolled	12	12	9	14	15
	%Enrolled	36.4	41.4	42.9	46.7	50.0
Upper Rio Grande	Applied	189	146	199	138	245
	Accepted	166	126	147	122	177
	%Accepted	88.3	94.7	79.5	90.4	77.0
	Enrolled	49	39	50	42	64
	%Enrolled	29.5	31.0	34.0	34.4	36.2

		2006	2007	2008	2009	2010
West Texas	Applied	83	85	86	85	86
	Accepted	79	80	70	77	74
	%Accepted	95.2	96.4	89.7	91.7	90.2
	Enrolled	38	36	30	35	32
	%Enrolled	48.1	45.0	42.9	45.5	43.2
Total		11,293	11,475	13,259	12,270	13,603
		10,122	10,163	10,949	10,426	10,724
		90.8	93.0	88.0	86.9	83.2
		4,775	4,837	4,849	4,883	5,095
		47.2	47.6	44.3	46.8	47.5

First Time Undergraduates Applied, Accepted, and Enrolled by Residence Category

		2006	2007	2008	2009	2010
Bexar	Applied	2,966	2,814	3,321	3,120	3,347
	Accepted	2,632	2,549	2,698	2,658	2,734
	%Accepted	89.6	93.0	85.4	86.8	84.6
	Enrolled	1,363	1,372	1,324	1,366	1,488
	%Enrolled	51.8	53.8	49.1	51.4	54.4
Other Texas County	Applied	7,979	8,244	9,485	8,717	9,770
	Accepted	7,193	7,267	7,888	7,423	7,610
	%Accepted	91.5	93.2	89.2	87.2	82.9
	Enrolled	3,297	3,339	3,390	3,379	3,438
	%Enrolled	45.8	45.9	43.0	45.5	45.2
Other States	Applied	226	247	305	253	272
	Accepted	193	195	228	195	196
	%Accepted	86.5	85.9	77.8	79.6	74.2
	Enrolled	64	48	60	64	79
	%Enrolled	33.2	24.6	26.3	32.8	40.3
Out of Country	Applied	122	170	148	180	214
	Accepted	104	152	135	150	184
	%Accepted	86.0	92.7	93.1	88.2	87.2
	Enrolled	51	78	75	74	90
	%Enrolled	49.0	51.3	55.6	49.3	48.9
Total		11,293	11,475	13,259	12,270	13,603
		10,122	10,163	10,949	10,426	10,724
		90.8	93.0	88.0	86.9	83.2
		4,775	4,837	4,849	4,883	5,095
		47.2	47.6	44.3	46.8	47.5

New First Time Undergraduate Enrollment by Residence



First Time Undergraduates Applied, Accepted, and Enrolled by Admission Decision

		2006	2007	2008	2009	2010
Accepted and Ranked in Top 10% of High School	Applied	1,176	1,104	1,495	1,273	1,461
	Accepted	1,176	1,104	1,495	1,273	1,461
	%Accepted	100.0	100.0	100.0	100.0	100.0
	Enrolled	372	337	418	398	535
	%Enrolled	31.6	30.5	28.0	31.3	36.6
Accepted and Ranked in 11 - 25% of High School	Applied	2,670	2,472	3,081	3,012	3,208
	Accepted	2,670	2,472	3,081	3,012	3,208
	%Accepted	100.0	100.0	100.0	100.0	100.0
	Enrolled	1,161	1,077	1,270	1,329	1,510
	%Enrolled	43.5	43.6	41.2	44.1	47.1
Accepted on Provisional Basis	Applied	717	808	773	744	712
	Accepted	717	808	773	744	712
	%Accepted	100.0	100.0	100.0	100.0	100.0
	Enrolled	423	506	458	466	458
	%Enrolled	59.0	62.6	59.2	62.6	64.3
Accepted on Other Criteria	Applied	5,559	5,779	5,600	5,397	5,343
	Accepted	5,559	5,779	5,600	5,397	5,343
	%Accepted	100.0	100.0	100.0	100.0	100.0
	Enrolled	2,819	2,917	2,703	2,690	2,592
	%Enrolled	50.7	50.5	48.3	49.8	48.5
Denied	Applied	1,023	766	1,493	1,567	2,158
	Accepted	0	0	0	0	0
	%Accepted	0.0	0.0	0.0	0.0	0.0
	Enrolled					
	%Enrolled					
Withdrew Application	Applied	148	546	817	277	721
	Accepted					
	%Accepted					
	Enrolled					
	%Enrolled					
Total	Applied	11,293	11,475	13,259	12,270	13,603
	Accepted	10,122	10,163	10,949	10,426	10,724
	%Accepted	90.8	93.0	88.0	86.9	83.2
	Enrolled	4,775	4,837	4,849	4,883	5,095
	%Enrolled	47.2	47.6	44.3	46.8	47.5

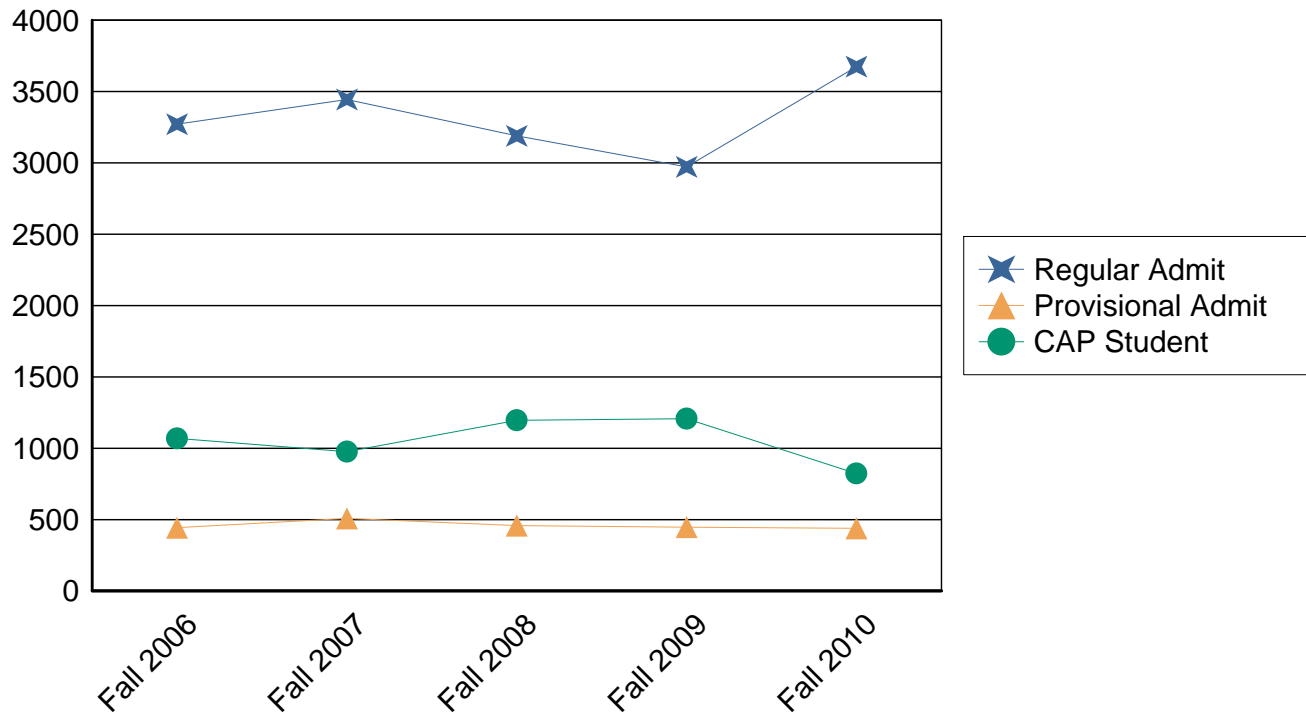
UTSA First Time Undergraduate Information

This section includes students who began at UTSA, this includes the students who are part of the Coordinated Admissions Program with the University of Texas at Austin and other students who do not plan to get a degree from UTSA. For more information on this topic please contact the Office of Institutional Research at (210) 458-4706.

New Students by Admission Type

	Fall 2006	Fall 2007	Fall 2008	Fall 2009	Fall 2010
Regular Admit	3,271 68.4%	3,444 69.9%	3,189 65.8%	2,972 64.2%	3,674 74.4%
Provisional Admit	443 9.3%	508 10.3%	458 9.5%	447 9.7%	439 8.9%
CAP Student	1,069 22.3%	976 19.8%	1,196 24.7%	1,207 26.1%	823 16.7%
Total	4,783 100.0%	4,928 100.0%	4,843 100.0%	4,626 100.0%	4,936 100.0%

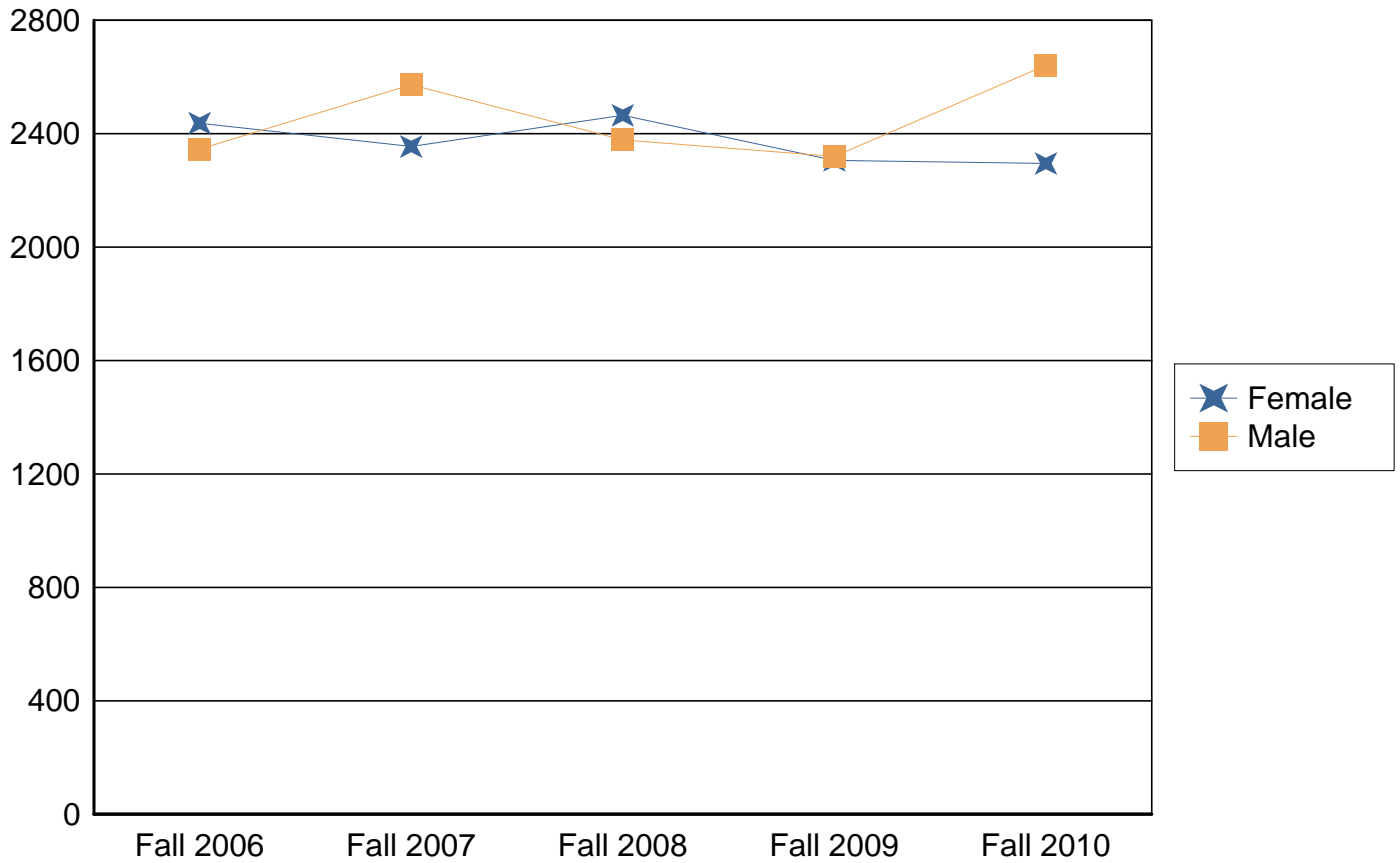
New Students by Admission Type



UTSA First Time Undergraduates by Gender (students seeking degrees at UTSA)

	Fall 2006	Fall 2007	Fall 2008	Fall 2009	Fall 2010
Female	2,437 51.0%	2,355 47.8%	2,465 50.9%	2,306 49.8%	2,295 46.5%
Male	2,346 49.0%	2,573 52.2%	2,378 49.1%	2,320 50.2%	2,641 53.5%
Total	4,783 100.0%	4,928 100.0%	4,843 100.0%	4,626 100.0%	4,936 100.0%

UTSA First Time Undergraduates by Gender

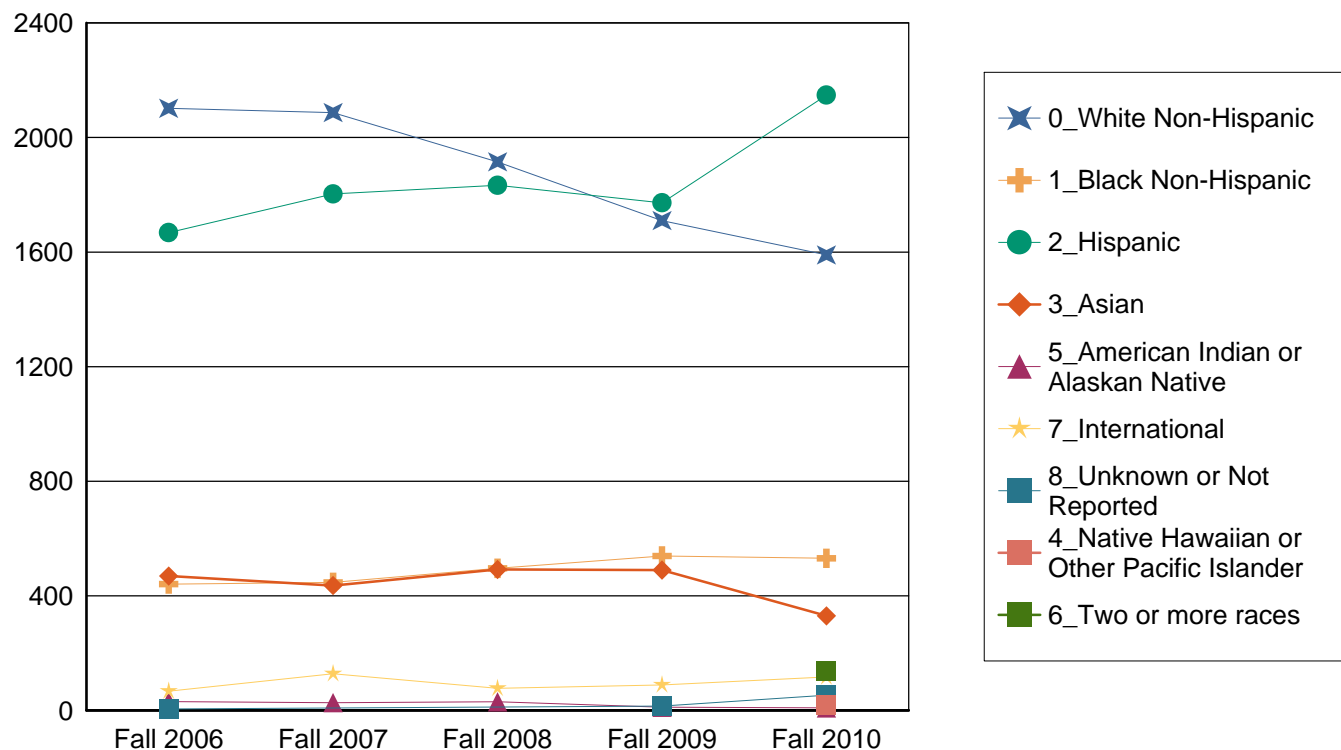


UTSA First Time Undergraduates by Ethnicity

	Fall 2006	Fall 2007	Fall 2008	Fall 2009	Fall 2010
White Non-Hispanic	2,102 43.9%	2,087 42.3%	1,915 39.5%	1,710 37.0%	1,590 32.2%
Black Non-Hispanic	441 9.2%	447 9.1%	496 10.2%	539 11.7%	531 10.8%
Hispanic	1,668 34.9%	1,803 36.6%	1,833 37.8%	1,772 38.3%	2,148 43.5%
Asian	469 9.8%	436 8.8%	492 10.2%	490 10.6%	330 6.7%
Native Hawaiian or Other Pacific Islander	0 0.0%	0 0.0%	0 0.0%	0 0.0%	19 0.4%
American Indian or Alaskan Native	31 0.6%	27 0.5%	30 0.6%	11 0.2%	9 0.2%
Two or more races	0 0.0%	0 0.0%	0 0.0%	0 0.0%	139 2.8%
International	67 1.4%	128 2.6%	77 1.6%	89 1.9%	117 2.4%
Unknown or Not Reported	5 0.1%	0 0.0%	0 0.0%	15 0.3%	53 1.1%
Total	4,783 100.0%	4,928 100.0%	4,843 100.0%	4,626 100.0%	4,936 100.0%

For details on new Race/Ethnicity categories please see page one of this document

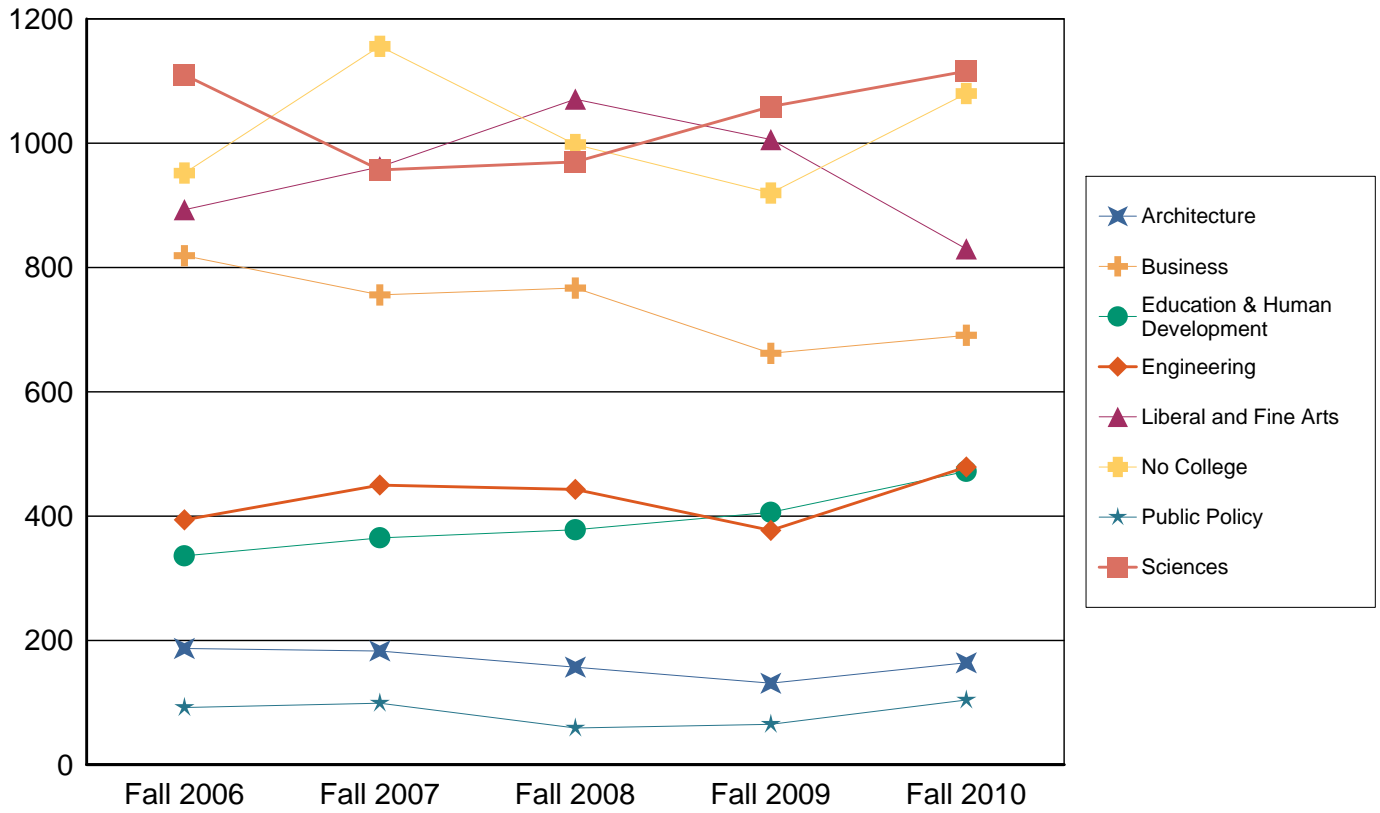
UTSA First Time Undergraduates by Ethnicity



UTSA First Time Undergraduates by College

	Fall 2006	Fall 2007	Fall 2008	Fall 2009	Fall 2010
Architecture	187 3.9%	183 3.7%	157 3.2%	131 2.8%	164 3.3%
Business	819 17.1%	756 15.3%	767 15.8%	662 14.3%	691 14.0%
Education & Human Development	336 7.0%	365 7.4%	378 7.8%	406 8.8%	472 9.6%
Engineering	394 8.2%	450 9.1%	443 9.1%	377 8.1%	479 9.7%
Liberal and Fine Arts	893 18.7%	962 19.5%	1,071 22.1%	1,006 21.7%	830 16.8%
No College	952 19.9%	1,156 23.5%	998 20.6%	920 19.9%	1,080 21.9%
Public Policy	92 1.9%	99 2.0%	59 1.2%	65 1.4%	104 2.1%
Sciences	1,110 23.2%	957 19.4%	970 20.0%	1,059 22.9%	1,116 22.6%
Total	4,783 100.0%	4,928 100.0%	4,843 100.0%	4,626 100.0%	4,936 100.0%

UTSA First Time Undergraduates by College



SAT and ACT Scores

UTSA First Time Undergraduates Average SAT Total

	Fall 2006	Fall 2007	Fall 2008	Fall 2009	Fall 2010
Regular Admit	1,016.0	1,013.4	1,018.9	1,017.8	1,021.7
Provisional Admit	817.8	818.5	837.5	867.7	879.5
CAP Student	1,117.2	1,110.5	1,122.6	1,126.0	1,137.7
Total	1,021.8	1,014.7	1,028.8	1,032.5	1,029.3

UTSA First Time Undergraduates 25th and 75th Percentile SAT Total

		Fall 2006	Fall 2007	Fall 2008	Fall 2009	Fall 2010
Regular Admit	25%	930	930	940	940	940
	75%	1,090	1,090	1,100	1,100	1,100
Provisional Admit	25%	770	770	790	820	840
	75%	870	870	880	910	910
CAP Student	25%	1,030	1,020	1,040	1,040	1,050
	75%	1,210	1,200	1,210	1,220	1,220
Total	25%	920	910	930	930	935
	75%	1,120	1,110	1,130	1,130	1,120

UTSA First Time Undergraduates Average SAT Verbal

	Fall 2006	Fall 2007	Fall 2008	Fall 2009	Fall 2010
Regular Admit	500.7	498.7	499.7	497.6	498.6
Provisional Admit	403.3	405.4	413.8	426.8	428.8
CAP Student	545.9	540.9	545.5	548.1	553.6
Total	502.5	498.4	503.5	504.4	502.0

UTSA First Time Undergraduates 25th and 75th Percentile SAT Verbal

		Fall 2006	Fall 2007	Fall 2008	Fall 2009	Fall 2010
Regular Admit	25%	450	450	450	450	450
	75%	550	540	550	540	550
Provisional Admit	25%	370	380	380	400	400
	75%	435	440	450	460	460
CAP Student	25%	490	490	490	500	500
	75%	600	590	600	600	600
Total	25%	450	440	450	450	450
	75%	560	550	560	560	560

UTSA First Time Undergraduates Average SAT Math

	Fall 2006	Fall 2007	Fall 2008	Fall 2009	Fall 2010
Regular Admit	515.14	514.73	519.16	520.19	523.14
Provisional Admit	414.55	413.30	423.76	440.84	450.78
CAP Student	571.27	569.54	577.14	577.76	584.11
Total	519.3	516.4	525.3	528.0	527.3

UTSA First Time Undergraduates 25th and 75th Percentile SAT Math

		Fall 2006	Fall 2007	Fall 2008	Fall 2009	Fall 2010
Regular Admit	25%	460	460	470	470	470
	75%	560	560	570	570	570
Provisional Admit	25%	380	380	390	410	420
	75%	450	450	460	480	480
CAP Student	25%	520	520	520	520	530
	75%	620	620	630	630	640
Total		460 580	460 570	470 580	470 580	470 580

UTSA First Time Undergraduates Average ACT Composite

	Fall 2006	Fall 2007	Fall 2008	Fall 2009	Fall 2010
Regular Admit	20.8	20.7	20.9	21.1	21.3
Provisional Admit	16.3	16.1	16.7	17.4	17.7
CAP Student	22.9	23.2	23.7	24.1	24.4
Total	21	21	21	22	22

UTSA First Time Undergraduates 25th and 75th Percentile ACT Composite

		Fall 2006	Fall 2007	Fall 2008	Fall 2009	Fall 2010
Regular Admit	25%	19	19	19	19	19
	75%	22	23	23	23	23
Provisional Admit	25%	15	15	15	16	17
	75%	17	18	18	18	19
CAP Student	25%	21	21	21	22	22
	75%	25	26	26	26	27
Total		18 23	18 23	19 24	19 24	19 24

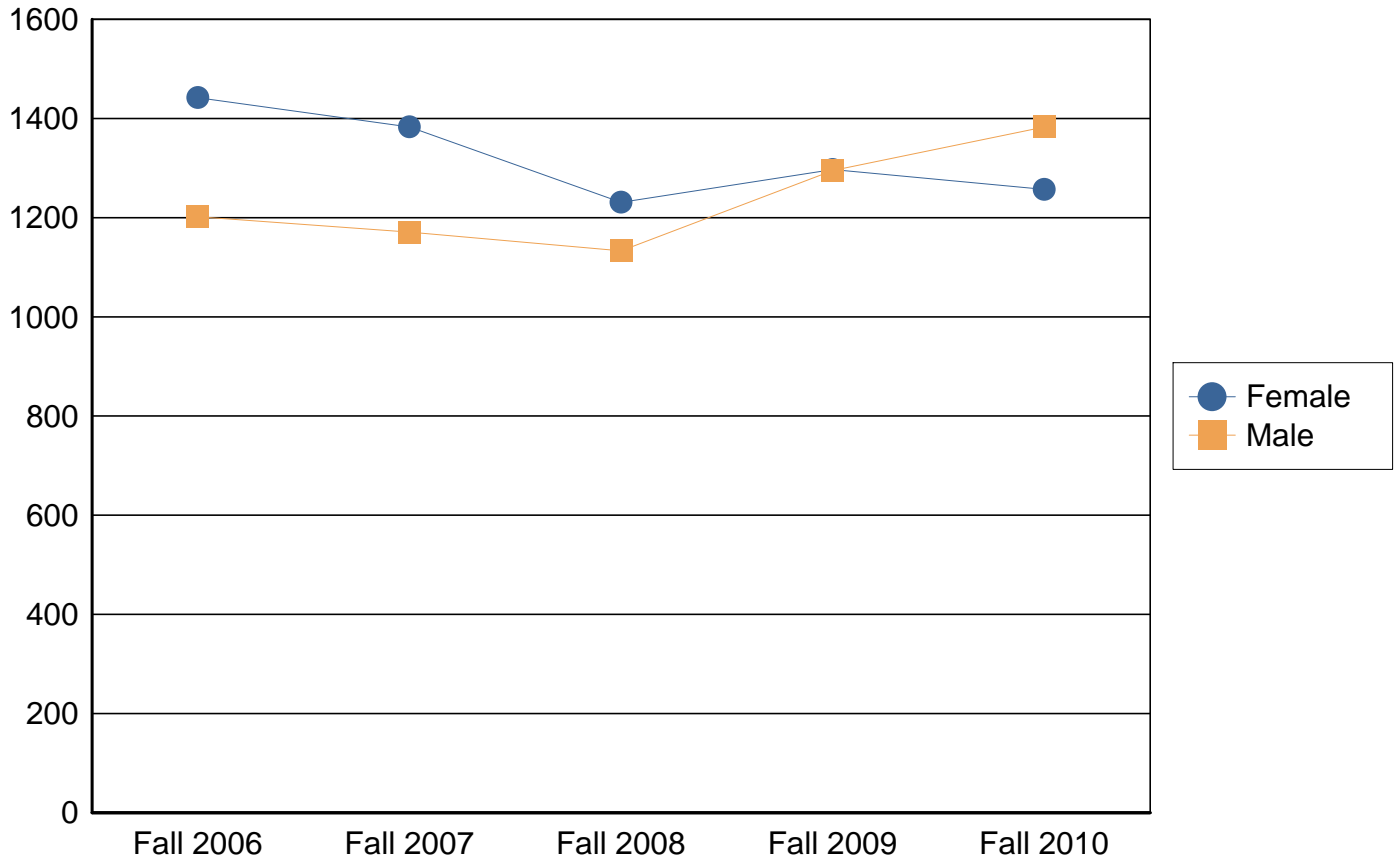
UTSA New Transfer Student Information

This section includes all students who are transferring to UTSA from another university or community college. For more information on this topic please contact the Office of Institutional Research at (210) 458-4706.

UTSA New Transfer Students by Gender

	Fall 2006	Fall 2007	Fall 2008	Fall 2009	Fall 2010
Female	1,442 54.5%	1,383 54.2%	1,231 52.1%	1,297 50.0%	1,257 47.6%
Male	1,202 45.5%	1,171 45.8%	1,133 47.9%	1,295 50.0%	1,383 52.4%
Total	2,644 100.0%	2,554 100.0%	2,364 100.0%	2,592 100.0%	2,640 100.0%

UTSA New Transfer Students by Gender

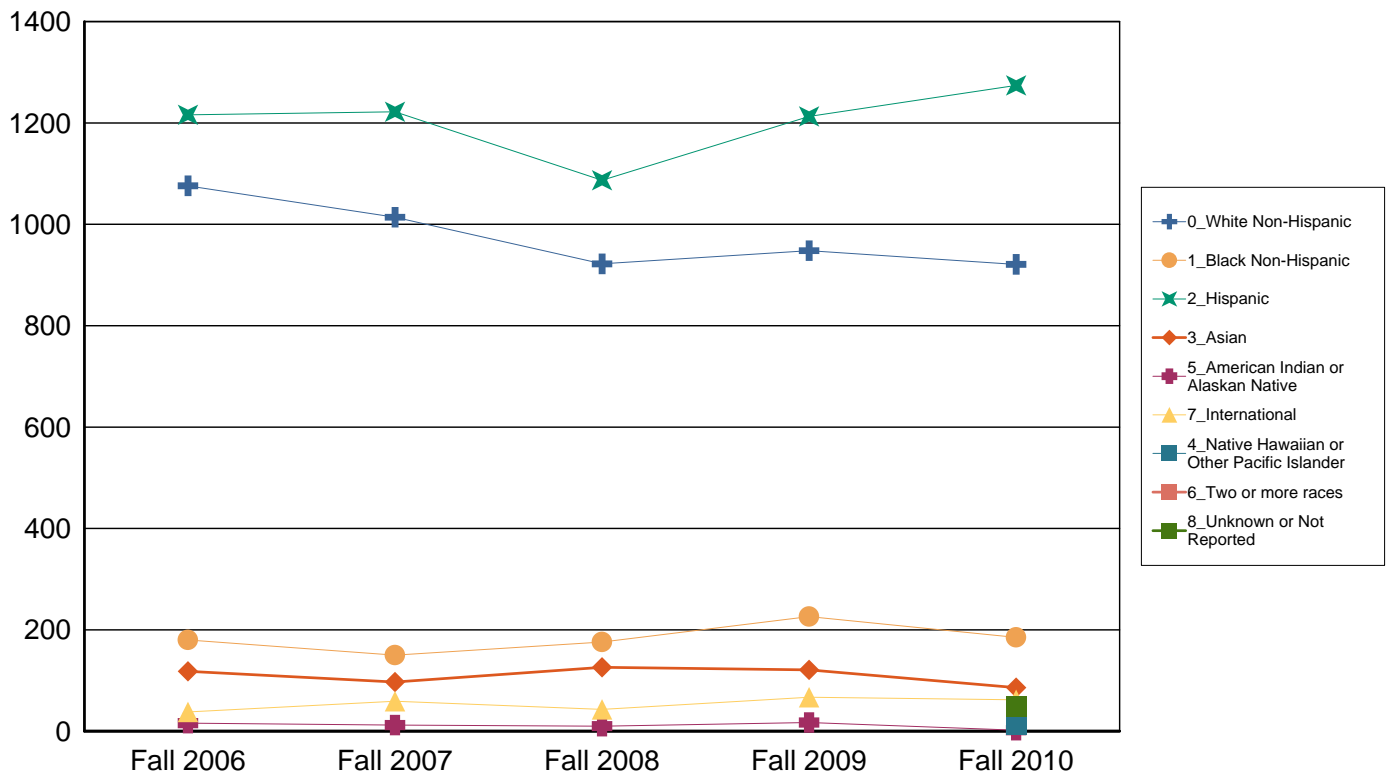


UTSA New Transfer Students by Ethnicity

	Fall 2006	Fall 2007	Fall 2008	Fall 2009	Fall 2010
White Non-Hispanic	1,076 40.7%	1,014 39.7%	922 39.0%	948 36.6%	921 34.9%
Black Non-Hispanic	180 6.8%	150 5.9%	176 7.4%	226 8.7%	185 7.0%
Hispanic	1,216 46.0%	1,222 47.8%	1,087 46.0%	1,213 46.8%	1,274 48.3%
Asian	118 4.5%	97 3.8%	126 5.3%	121 4.7%	86 3.3%
Native Hawaiian or Other Pacific Islander	0 0.0%	0 0.0%	0 0.0%	0 0.0%	13 0.5%
American Indian or Alaskan Native	16 0.6%	12 0.5%	10 0.4%	17 0.7%	2 0.1%
Two or more races	0 0.0%	0 0.0%	0 0.0%	0 0.0%	49 1.9%
International	38 1.4%	59 2.3%	43 1.8%	67 2.6%	62 2.3%
Unknown or Not Reported	0 0.0%	0 0.0%	0 0.0%	0 0.0%	48 1.8%
Total	2,644 100.0%	2,554 100.0%	2,364 100.0%	2,592 100.0%	2,640 100.0%

For details on new Race/Ethnicity categories please see page one of this document

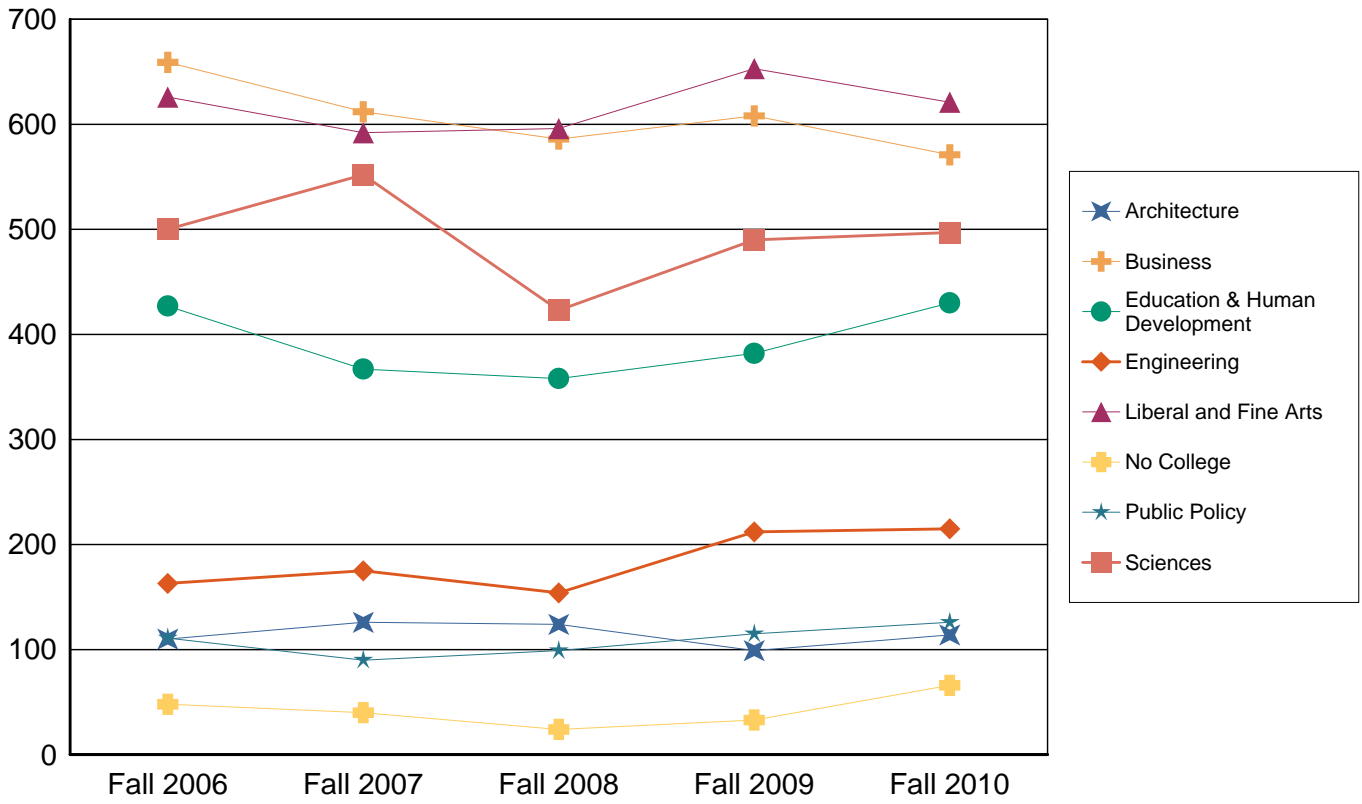
UTSA Transfer Students by Ethnicity



UTSA Transfer Students by College

	Fall 2006	Fall 2007	Fall 2008	Fall 2009	Fall 2010
Architecture	110 4.2%	126 4.9%	124 5.2%	99 3.8%	114 4.3%
Business	659 24.9%	612 24.0%	586 24.8%	608 23.5%	571 21.6%
Education & Human Development	427 16.1%	367 14.4%	358 15.1%	382 14.7%	430 16.3%
Engineering	163 6.2%	175 6.9%	154 6.5%	212 8.2%	215 8.1%
Liberal and Fine Arts	626 23.7%	592 23.2%	596 25.2%	653 25.2%	621 23.5%
No College	48 1.8%	40 1.6%	24 1.0%	33 1.3%	66 2.5%
Public Policy	111 4.2%	90 3.5%	99 4.2%	115 4.4%	126 4.8%
Sciences	500 18.9%	552 21.6%	423 17.9%	490 18.9%	497 18.8%
Total	2,644 100.0%	2,554 100.0%	2,364 100.0%	2,592 100.0%	2,640 100.0%

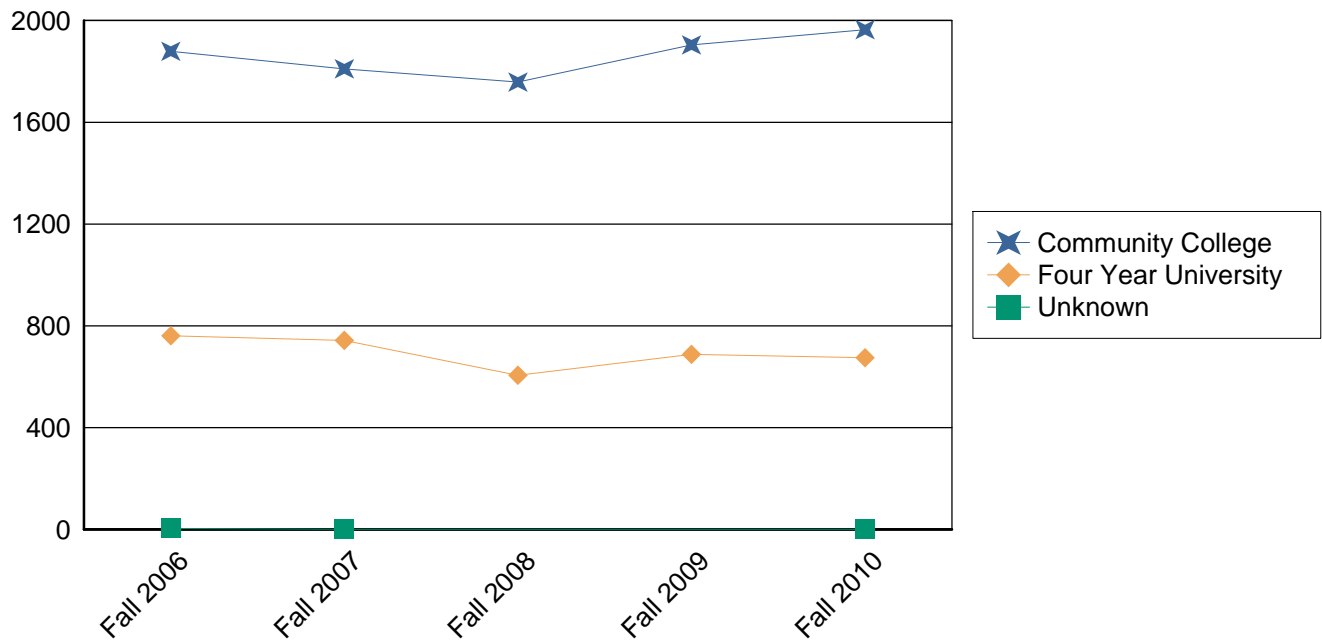
UTSA Transfer Students by College



UTSA New Transfer Students by Ethnicity

	Fall 2006	Fall 2007	Fall 2008	Fall 2009	Fall 2010
Unknown	4 0.2%	1 0.0%	0 0.0%	0 0.0%	1 0.0%
Community College	1,879 71.1%	1,810 70.9%	1,758 74.4%	1,904 73.5%	1,964 74.4%
Four Year University	761 28.8%	743 29.1%	606 25.6%	688 26.5%	675 25.6%
Total	2,644 100.0%	2,554 100.0%	2,364 100.0%	2,592 100.0%	2,640 100.0%

New Transfer Students By College Type



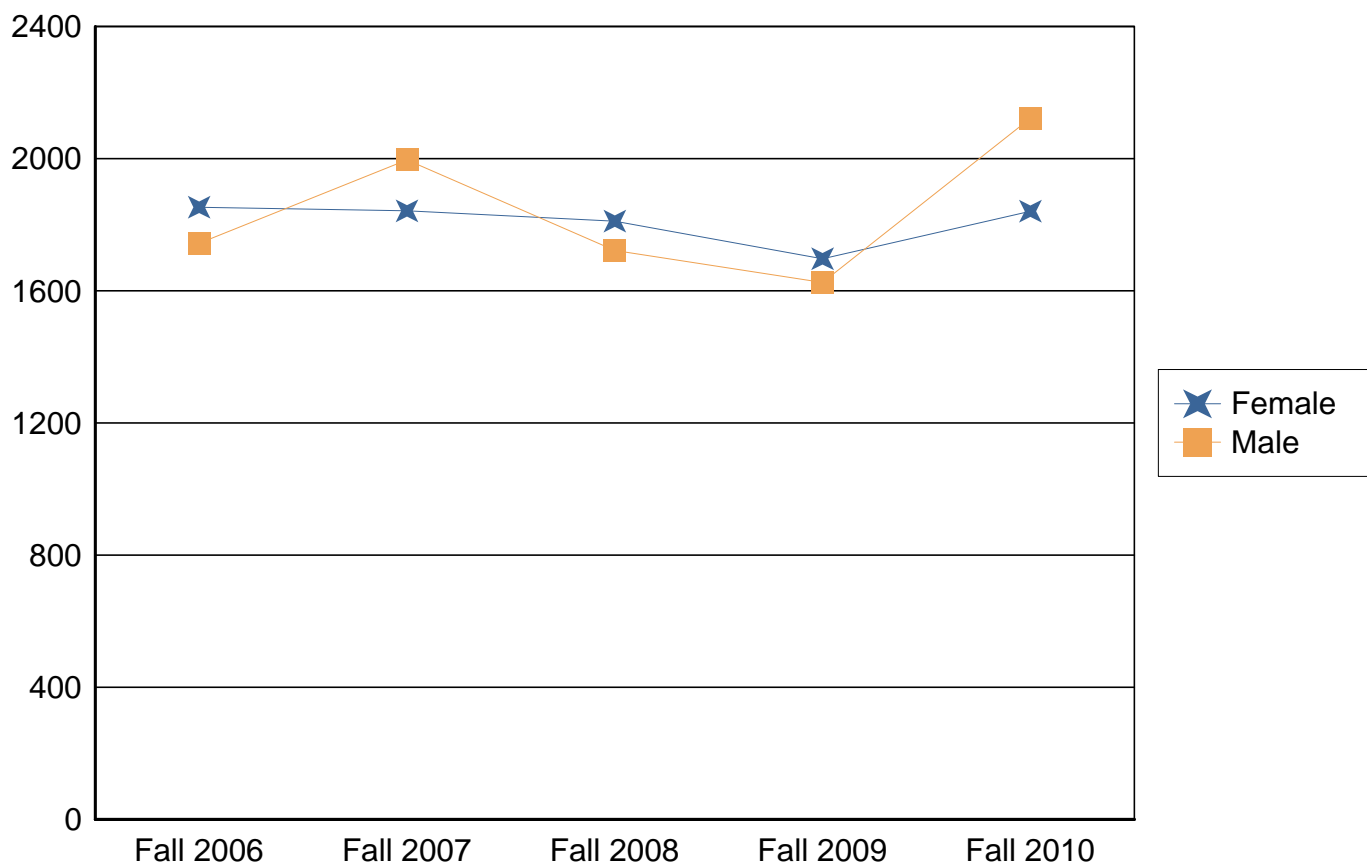
UTSA First Time Full Time Cohort Information

This section includes only students who are seeking a degree from UTSA, this excludes the students who are part of the Coordinated Admissions Program with the University of Texas at Austin and other students who do not plan to get a degree from UTSA. Students who are now deceased are eliminated from the cohort for graduation and retention purposes. For more information on this topic please contact the Office of Institutional Research at (210) 458-4706.

First Time Full Time Undergraduate Cohort by Gender (students seeking degrees at UTSA)

	Fall 2006	Fall 2007	Fall 2008	Fall 2009	Fall 2010
Female	1,853 51.5%	1,842 48.0%	1,811 51.3%	1,697 51.1%	1,841 46.5%
Male	1,744 48.5%	1,996 52.0%	1,722 48.7%	1,625 48.9%	2,122 53.5%
Total	3,597 100.0%	3,838 100.0%	3,533 100.0%	3,322 100.0%	3,963 100.0%

UTSA Degree Seeking Cohort by Gender

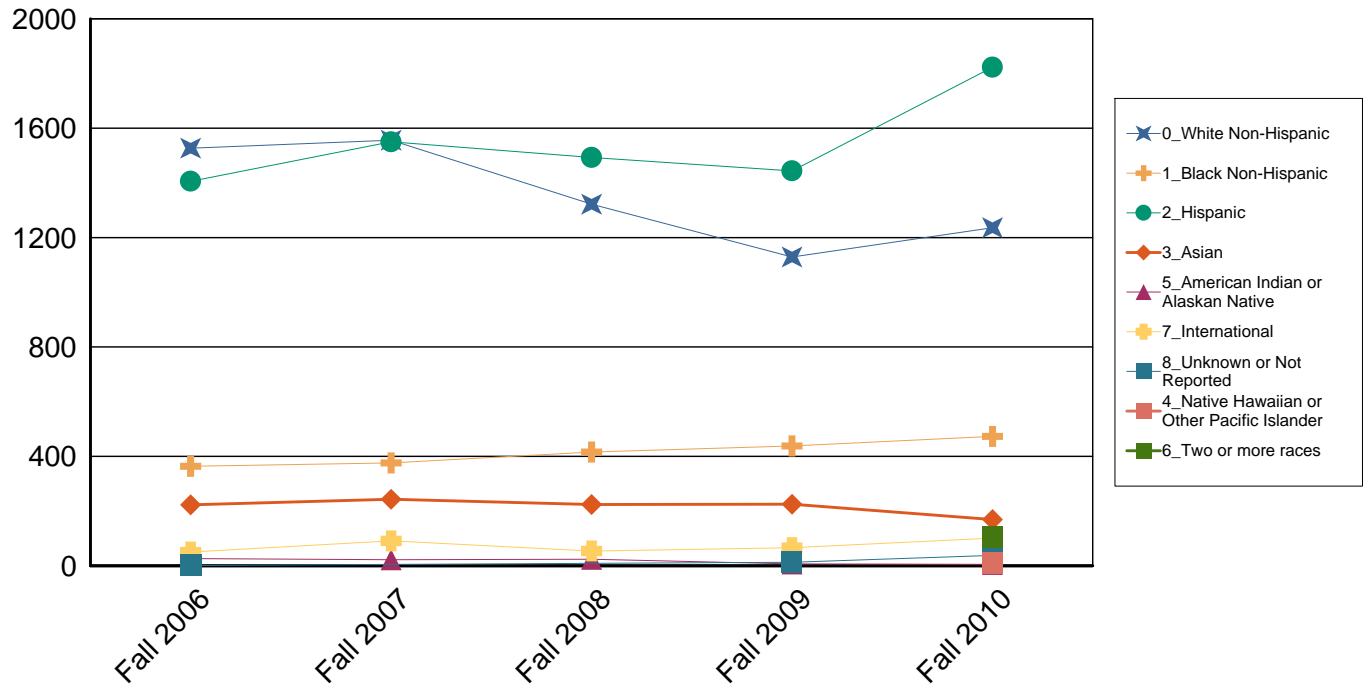


First Time Full Time Undergraduate Cohort by Ethnicity (students seeking degrees at UTSA)

	Fall 2006	Fall 2007	Fall 2008	Fall 2009	Fall 2010
White Non-Hispanic	1,527 42.5%	1,556 40.5%	1,322 37.4%	1,129 34.0%	1,236 31.2%
Black Non-Hispanic	364 10.1%	376 9.8%	416 11.8%	438 13.2%	473 11.9%
Hispanic	1,406 39.1%	1,550 40.4%	1,493 42.3%	1,444 43.5%	1,823 46.0%
Asian	223 6.2%	243 6.3%	224 6.3%	225 6.8%	169 4.3%
Native Hawaiian or Other Pacific Islander	0 0.0%	0 0.0%	0 0.0%	0 0.0%	11 0.3%
American Indian or Alaskan Native	26 0.7%	22 0.6%	24 0.7%	7 0.2%	5 0.1%
Two or more races	0 0.0%	0 0.0%	0 0.0%	0 0.0%	107 2.7%
International	50 1.4%	91 2.4%	54 1.5%	66 2.0%	101 2.5%
Unknown or Not Reported	1 0.0%	0 0.0%	0 0.0%	13 0.4%	38 1.0%
Total	3,597 100.0%	3,838 100.0%	3,533 100.0%	3,322 100.0%	3,963 100.0%

For details on new Race/Ethnicity categories please see page one of this document

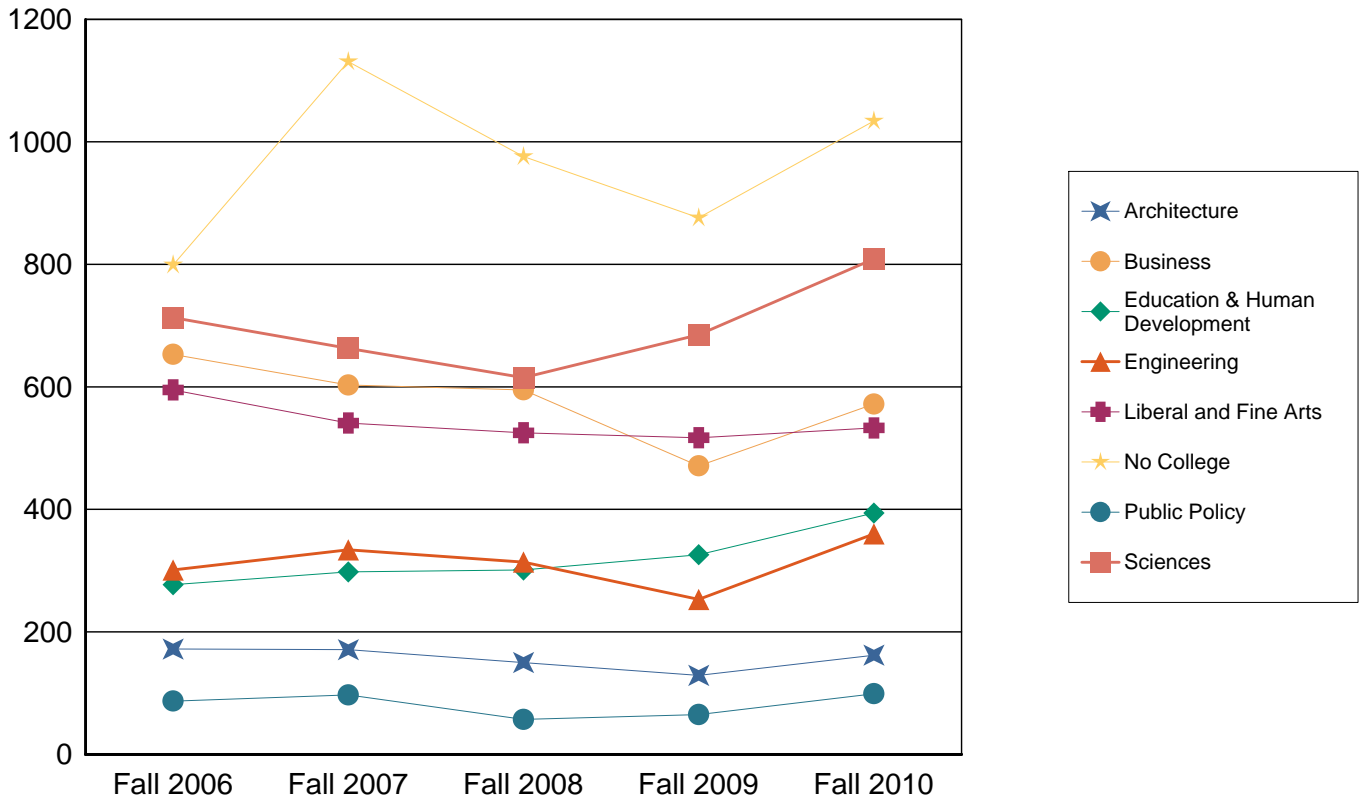
UTSA Degree Seeking Cohort by Ethnicity



First Time Full Time Undergraduate Cohort by College (students seeking degrees at UTSA)

	Fall 2006	Fall 2007	Fall 2008	Fall 2009	Fall 2010
Architecture	172 4.8%	171 4.5%	150 4.2%	129 3.9%	162 4.1%
Business	653 18.2%	603 15.7%	595 16.8%	471 14.2%	572 14.4%
Education & Human Development	277 7.7%	298 7.8%	301 8.5%	326 9.8%	394 9.9%
Engineering	301 8.4%	334 8.7%	314 8.9%	253 7.6%	360 9.1%
Liberal and Fine Arts	595 16.5%	541 14.1%	525 14.9%	517 15.6%	533 13.4%
No College	799 22.2%	1,131 29.5%	976 27.6%	876 26.4%	1,034 26.1%
Public Policy	87 2.4%	97 2.5%	57 1.6%	65 2.0%	99 2.5%
Sciences	713 19.8%	663 17.3%	615 17.4%	685 20.6%	809 20.4%
Total	3,597 100.0%	3,838 100.0%	3,533 100.0%	3,322 100.0%	3,963 100.0%

UTSA Degree Seeking Cohort by College



SAT and ACT Scores

First Time Full Time Undergraduate Cohort Average SAT Total

	Fall 2006	Fall 2007	Fall 2008	Fall 2009	Fall 2010
Provisional Admit	818	818	838	868	880
Regular Admit	1,016	1,014	1,020	1,018	1,024
Total	991	988	996	996	1,008

First Time Full Time Undergraduate Cohort 25th and 75th Percentile SAT Total

	Fall 2006	Fall 2007	Fall 2008	Fall 2009	Fall 2010
Provisional Admit	770	770	790	820	840
	870	870	880	910	910
Regular Admit	930	930	940	940	950
	1,090	1,090	1,100	1,100	1,100
Total	900	890	900	910	920
	1,080	1,070	1,080	1,080	1,090

First Time Full Time Undergraduate Cohort Average SAT Verbal

	Fall 2006	Fall 2007	Fall 2008	Fall 2009	Fall 2010
Provisional Admit	403	405	414	427	428
Regular Admit	501	499	500	498	499
Total	488	486	489	487	491

First Time Full Time Undergraduate Cohort 25th and 75th Percentile SAT Verbal

	Fall 2006	Fall 2007	Fall 2008	Fall 2009	Fall 2010
Provisional Admit	370	380	380	400	400
	435	440	450	460	460
Regular Admit	450	450	450	450	450
	550	540	550	540	550
Total	430	430	440	440	440
	540	530	540	530	540

First Time Full Time Undergraduate Cohort Average SAT Math

	Fall 2006	Fall 2007	Fall 2008	Fall 2009	Fall 2010
Provisional Admit	415	413	424	441	451
Regular Admit	516	515	520	520	525
Total	503	501	507	509	517

First Time Full Time Undergraduate Cohort 25th and 75th Percentile SAT Math

	Fall 2006	Fall 2007	Fall 2008	Fall 2009	Fall 2010
Provisional Admit	380 450	380 450	390 460	410 480	420 480
Regular Admit	460 560	460 560	470 570	470 570	470 570
Total	450 550	450 550	450 560	460 560	460 570

First Time Full Time Undergraduate Cohort Average ACT Composite

	Fall 2006	Fall 2007	Fall 2008	Fall 2009	Fall 2010
Provisional Admit	16	16	17	17	18
Regular Admit	21	21	21	21	21
Total	20	20	20	21	21

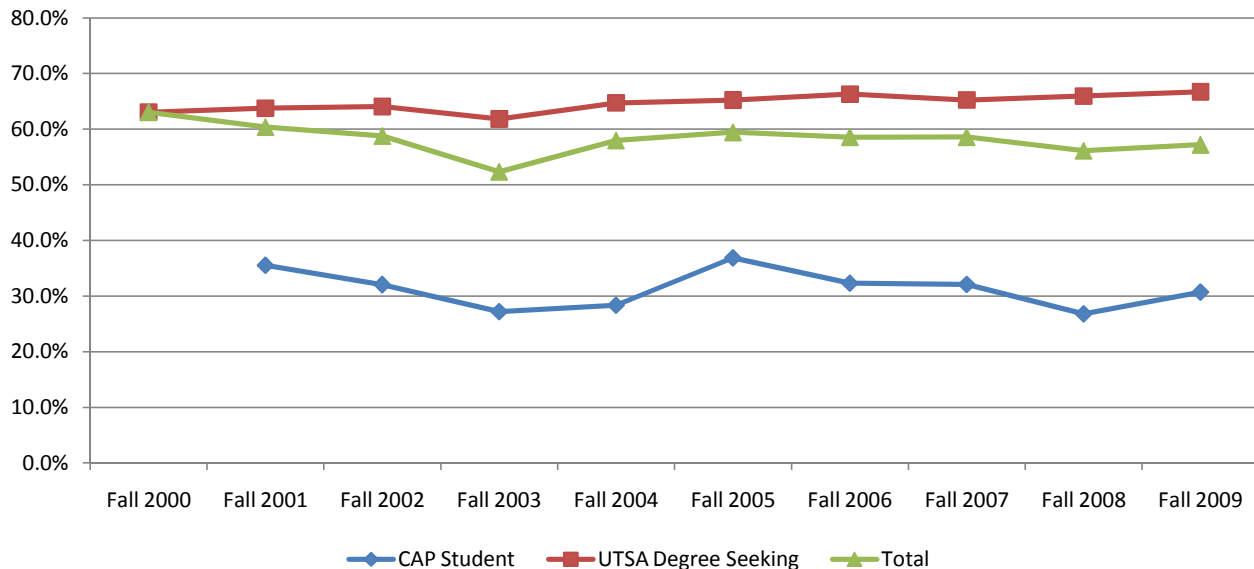
First Time Full Time Undergraduate Cohort 25th and 75th Percentile ACT Composite

	Fall 2006	Fall 2007	Fall 2008	Fall 2009	Fall 2010
Provisional Admit	15 17	15 18	15 18	16 18	17 19
Regular Admit	19 22	19 23	19 23	19 23	19 23
Total	18 22	18 22	18 23	18 23	19 23

Retention and Graduation for First Time Full Time Cohort

All Students			Percent Retained			Percent Graduated		
Cohort	Student Type	# in Cohort	One Year	Two Years	Three Years	Four Years	Five Years	Six Years
Fall 2000	UTSA Degree Seeking	1730	63.1%	47.6%	42.1%	7.0%	21.0%	28.3%
	Total	1730	63.1%	47.6%	42.1%	7.0%	21.0%	28.3%
Fall 2001	UTSA Degree Seeking	1683	63.8%	48.4%	44.4%	7.6%	22.9%	31.3%
	CAP Student	228	35.5%	29.4%	24.6%	3.9%	14.0%	18.0%
	Total	1911	60.4%	46.2%	42.1%	7.2%	21.8%	29.7%
Fall 2002	UTSA Degree Seeking	2507	64.1%	49.7%	42.7%	8.6%	22.3%	30.7%
	CAP Student	496	32.1%	24.8%	22.6%	3.6%	13.5%	17.1%
	Total	3003	58.8%	45.6%	39.4%	7.8%	20.9%	28.5%
Fall 2003	UTSA Degree Seeking	2998	61.8%	48.8%	43.5%	8.6%	22.1%	29.7%
	CAP Student	1133	27.2%	22.9%	19.9%	4.5%	10.2%	14.1%
	Total	4131	52.3%	41.7%	37.0%	7.5%	18.9%	25.4%
Fall 2004	UTSA Degree Seeking	3456	64.7%	48.6%	40.7%	7.8%	21.5%	28.8%
	CAP Student	790	28.4%	22.7%	20.0%	5.6%	12.5%	15.7%
	Total	4246	58.0%	43.8%	36.8%	7.4%	19.8%	26.3%
Fall 2005	UTSA Degree Seeking	3475	65.2%	46.8%	40.4%	8.1%	22.1%	
	CAP Student	892	36.9%	28.6%	25.9%	7.3%	15.1%	
	Total	4367	59.4%	43.1%	37.4%	8.0%	20.7%	
Fall 2006	UTSA Degree Seeking	3628	66.3%	46.5%	40.0%	9.8%		
	CAP Student	1065	32.3%	25.7%	22.6%	6.6%		
	Total	4693	58.6%	41.8%	36.1%	9.1%		
Fall 2007	UTSA Degree Seeking	3864	65.2%	48.1%	42.4%			
	CAP Student	972	32.1%	27.1%	23.6%			
	Total	4836	58.6%	43.9%	38.6%			
Fall 2008	UTSA Degree Seeking	3568	65.9%	51.4%				
	CAP Student	1195	26.8%	22.1%				
	Total	4763	56.1%	44.1%				
Fall 2009	UTSA Degree Seeking	3356	66.7%					
	CAP Student	1205	30.7%					
	Total	4561	57.2%					

One Year Retention Rate by Student Type



Retention and Graduation for First Time Full Time Cohort by Gender

Female			Percent Retained			Percent Graduated		
Cohort	Student Type	# in Cohort	One Year	Two Years	Three Years	Four Years	Five Years	Six Years
Fall 2000	UTSA Degree Seeking	895	65.6%	47.4%	43.7%	8.3%	23.4%	31.2%
	Total	895	65.6%	47.4%	43.7%	8.3%	23.4%	31.2%
Fall 2001	UTSA Degree Seeking	873	62.7%	47.3%	43.5%	8.4%	25.0%	32.4%
	CAP Student	104	32.7%	27.9%	25.0%	3.8%	16.3%	21.2%
	Total	977	59.5%	45.2%	41.6%	7.9%	24.1%	31.2%
Fall 2002	UTSA Degree Seeking	1384	64.7%	50.7%	43.9%	10.5%	25.8%	33.7%
	CAP Student	237	32.1%	24.1%	21.1%	5.5%	13.5%	17.3%
	Total	1621	60.0%	46.8%	40.5%	9.7%	24.0%	31.3%
Fall 2003	UTSA Degree Seeking	1542	63.6%	51.1%	45.3%	11.0%	25.3%	33.1%
	CAP Student	534	28.8%	24.2%	22.1%	6.2%	12.2%	16.5%
	Total	2076	54.7%	44.2%	39.3%	9.7%	21.9%	28.8%
Fall 2004	UTSA Degree Seeking	1765	65.8%	50.2%	41.8%	10.4%	25.9%	32.6%
	CAP Student	376	29.3%	22.6%	20.7%	7.4%	15.4%	17.3%
	Total	2141	59.4%	45.4%	38.1%	9.9%	24.1%	29.9%
Fall 2005	UTSA Degree Seeking	1782	65.0%	46.5%	39.8%	10.0%	24.6%	
	CAP Student	459	35.1%	28.5%	24.8%	9.4%	17.0%	
	Total	2241	58.9%	42.8%	36.7%	9.9%	23.0%	
Fall 2006	UTSA Degree Seeking	1875	67.2%	46.6%	40.7%	12.1%		
	CAP Student	519	32.9%	24.1%	21.6%	8.3%		
	Total	2394	59.8%	41.7%	36.5%	11.3%		
Fall 2007	UTSA Degree Seeking	1862	66.9%	49.6%	44.4%			
	CAP Student	448	33.5%	28.1%	25.0%			
	Total	2310	60.4%	45.4%	40.6%			
Fall 2008	UTSA Degree Seeking	1840	67.1%	51.9%				
	CAP Student	594	25.4%	20.9%				
	Total	2434	56.9%	44.3%				
Fall 2009	UTSA Degree Seeking	1724	67.9%					
	CAP Student	557	31.2%					
	Total	2281	58.9%					

Retention and Graduation for First Time Full Time Cohort by Gender

Male			Percent Retained			Percent Graduated		
Cohort	Student Type	# in Cohort	One Year	Two Years	Three Years	Four Years	Five Years	Six Years
Fall 2000	UTSA Degree Seeking	835	60.4%	47.9%	40.4%	5.6%	18.6%	25.1%
	Total	835	60.4%	47.9%	40.4%	5.6%	18.6%	25.1%
Fall 2001	UTSA Degree Seeking	810	64.9%	49.6%	45.4%	6.8%	20.6%	30.1%
	CAP Student	124	37.9%	30.6%	24.2%	4.0%	12.1%	15.3%
	Total	934	61.3%	47.1%	42.6%	6.4%	19.5%	28.2%
Fall 2002	UTSA Degree Seeking	1123	63.2%	48.5%	41.3%	6.3%	18.1%	27.1%
	CAP Student	259	32.0%	25.5%	23.9%	1.9%	13.5%	17.0%
	Total	1382	57.4%	44.2%	38.1%	5.5%	17.2%	25.2%
Fall 2003	UTSA Degree Seeking	1456	60.0%	46.3%	41.6%	6.1%	18.8%	26.1%
	CAP Student	599	25.7%	21.7%	17.9%	3.0%	8.5%	12.0%
	Total	2055	50.0%	39.1%	34.7%	5.2%	15.8%	22.0%
Fall 2004	UTSA Degree Seeking	1691	63.6%	47.0%	39.6%	5.1%	16.9%	24.7%
	CAP Student	414	27.5%	22.7%	19.3%	3.9%	9.9%	14.3%
	Total	2105	56.5%	42.2%	35.6%	4.9%	15.5%	22.7%
Fall 2005	UTSA Degree Seeking	1693	65.5%	47.2%	41.0%	6.2%	19.5%	
	CAP Student	433	38.8%	28.6%	27.0%	5.1%	13.2%	
	Total	2126	60.1%	43.4%	38.1%	6.0%	18.2%	
Fall 2006	UTSA Degree Seeking	1753	65.3%	46.5%	39.2%	7.3%		
	CAP Student	546	31.7%	27.3%	23.6%	4.9%		
	Total	2299	57.3%	41.9%	35.5%	6.7%		
Fall 2007	UTSA Degree Seeking	2002	63.7%	46.7%	40.6%			
	CAP Student	524	30.9%	26.1%	22.3%			
	Total	2526	56.9%	42.4%	36.8%			
Fall 2008	UTSA Degree Seeking	1728	64.8%	50.9%				
	CAP Student	601	28.1%	23.3%				
	Total	2329	55.3%	43.8%				
Fall 2009	UTSA Degree Seeking	1632	65.4%					
	CAP Student	648	30.2%					
	Total	2280	55.4%					

Retention and Graduation for First Time Full Time Cohort by Ethnicity

White			Percent Retained			Percent Graduated		
Cohort	Student Type	# in Cohort	One Year	Two Years	Three Years	Four Years	Five Years	Six Years
Fall 2000	UTSA Degree Seeking	712	62.9%	45.5%	39.9%	7.7%	21.6%	28.8%
	Total	712	62.9%	45.5%	39.9%	7.7%	21.6%	28.8%
Fall 2001	UTSA Degree Seeking	652	59.7%	43.6%	40.6%	8.6%	22.9%	29.1%
	CAP Student	99	31.3%	27.3%	22.2%	4.0%	11.1%	13.1%
	Total	751	55.9%	41.4%	38.2%	8.0%	21.3%	27.0%
Fall 2002	UTSA Degree Seeking	928	61.7%	45.9%	38.4%	10.2%	22.1%	29.1%
	CAP Student	225	22.7%	16.9%	15.1%	2.7%	10.7%	13.3%
	Total	1153	54.1%	40.2%	33.8%	8.8%	19.9%	26.0%
Fall 2003	UTSA Degree Seeking	1153	58.5%	43.2%	39.3%	8.0%	20.6%	27.8%
	CAP Student	561	21.2%	17.1%	13.2%	3.6%	7.8%	10.2%
	Total	1714	46.3%	34.7%	30.7%	6.5%	16.5%	22.0%
Fall 2004	UTSA Degree Seeking	1375	61.2%	45.8%	38.5%	8.7%	22.3%	28.9%
	CAP Student	371	22.4%	18.9%	15.4%	5.9%	11.1%	13.7%
	Total	1746	53.0%	40.1%	33.6%	8.1%	19.9%	25.7%
Fall 2005	UTSA Degree Seeking	1371	63.2%	43.3%	38.0%	8.1%	21.4%	
	CAP Student	368	26.9%	18.2%	15.5%	4.1%	8.4%	
	Total	1739	55.5%	38.0%	33.2%	7.2%	18.6%	
Fall 2006	UTSA Degree Seeking	1538	63.0%	42.7%	35.5%	8.9%		
	CAP Student	518	27.4%	22.2%	19.5%	5.0%		
	Total	2056	54.0%	37.5%	31.5%	7.9%		
Fall 2007	UTSA Degree Seeking	1561	61.9%	44.9%	39.7%			
	CAP Student	483	23.8%	19.3%	17.4%			
	Total	2044	52.9%	38.8%	34.4%			
Fall 2008	UTSA Degree Seeking	1327	62.5%	49.0%				
	CAP Student	559	22.9%	17.4%				
	Total	1886	50.8%	39.6%				
Fall 2009	UTSA Degree Seeking	1136	62.1%					
	CAP Student	549	23.7%					
	Total	1685	49.6%					

Retention and Graduation for First Time Full Time Cohort by Ethnicity

Black			Percent Retained			Percent Graduated		
Cohort	Student Type	# in Cohort	One Year	Two Years	Three Years	Four Years	Five Years	Six Years
Fall 2000	UTSA Degree Seeking	120	60.0%	40.8%	39.2%	7.5%	20.0%	22.5%
	Total	120	60.0%	40.8%	39.2%	7.5%	20.0%	22.5%
Fall 2001	UTSA Degree Seeking	113	65.5%	45.1%	38.9%	11.5%	21.2%	26.5%
	CAP Student	17	58.8%	52.9%	47.1%	5.9%	29.4%	35.3%
	Total	130	64.6%	46.2%	40.0%	10.8%	22.3%	27.7%
Fall 2002	UTSA Degree Seeking	148	70.9%	58.8%	48.6%	4.7%	20.9%	31.8%
	CAP Student	27	55.6%	48.1%	40.7%	0.0%	7.4%	18.5%
	Total	175	68.6%	57.1%	47.4%	4.0%	18.9%	29.7%
Fall 2003	UTSA Degree Seeking	193	62.7%	51.3%	39.9%	8.8%	20.7%	24.9%
	CAP Student	50	32.0%	32.0%	30.0%	8.0%	10.0%	20.0%
	Total	243	56.4%	47.3%	37.9%	8.6%	18.5%	23.9%
Fall 2004	UTSA Degree Seeking	287	73.2%	51.6%	44.9%	6.6%	22.0%	31.0%
	CAP Student	42	54.8%	47.6%	45.2%	7.1%	26.2%	31.0%
	Total	329	70.8%	51.1%	45.0%	6.7%	22.5%	31.0%
Fall 2005	UTSA Degree Seeking	310	65.5%	46.8%	37.7%	6.8%	18.1%	
	CAP Student	50	66.0%	56.0%	46.0%	16.0%	28.0%	
	Total	360	65.6%	48.1%	38.9%	8.1%	19.4%	
Fall 2006	UTSA Degree Seeking	368	75.3%	53.5%	46.7%	10.6%		
	CAP Student	65	63.1%	43.1%	44.6%	10.8%		
	Total	433	73.4%	52.0%	46.4%	10.6%		
Fall 2007	UTSA Degree Seeking	381	70.6%	57.2%	50.1%			
	CAP Student	62	48.4%	45.2%	38.7%			
	Total	443	67.5%	55.5%	48.5%			
Fall 2008	UTSA Degree Seeking	419	73.0%	56.8%				
	CAP Student	71	59.2%	54.9%				
	Total	490	71.0%	56.5%				
Fall 2009	UTSA Degree Seeking	444	76.1%					
	CAP Student	87	50.6%					
	Total	531	71.9%					

Retention and Graduation for First Time Full Time Cohort by Ethnicity

Hispanic			Percent Retained			Percent Graduated		
Cohort	Student Type	# in Cohort	One Year	Two Years	Three Years	Four Years	Five Years	Six Years
Fall 2000	UTSA Degree Seeking	822	63.5%	49.9%	43.6%	5.7%	19.8%	28.3%
	Total	822	63.5%	49.9%	43.6%	5.7%	19.8%	28.3%
Fall 2001	UTSA Degree Seeking	803	65.1%	50.9%	47.1%	5.2%	21.8%	32.1%
	CAP Student	70	37.1%	27.1%	28.6%	2.9%	14.3%	20.0%
	Total	873	62.9%	49.0%	45.6%	5.0%	21.2%	31.2%
Fall 2002	UTSA Degree Seeking	1248	63.1%	49.1%	43.5%	6.7%	21.3%	29.8%
	CAP Student	146	42.5%	33.6%	32.2%	5.5%	19.9%	22.6%
	Total	1394	60.9%	47.5%	42.3%	6.6%	21.2%	29.1%
Fall 2003	UTSA Degree Seeking	1435	62.9%	51.3%	45.3%	8.1%	21.7%	29.5%
	CAP Student	313	39.3%	34.5%	31.9%	6.7%	16.0%	22.4%
	Total	1748	58.7%	48.3%	42.9%	7.8%	20.7%	28.3%
Fall 2004	UTSA Degree Seeking	1546	65.8%	49.7%	40.6%	6.5%	19.4%	27.2%
	CAP Student	221	39.4%	29.9%	28.1%	6.3%	15.4%	19.9%
	Total	1767	62.5%	47.3%	39.0%	6.5%	18.9%	26.3%
Fall 2005	UTSA Degree Seeking	1511	66.4%	49.1%	42.1%	7.8%	22.3%	
	CAP Student	244	45.1%	38.1%	35.7%	8.6%	20.9%	
	Total	1755	63.4%	47.6%	41.2%	7.9%	22.1%	
Fall 2006	UTSA Degree Seeking	1421	67.0%	47.6%	42.2%	10.2%		
	CAP Student	217	41.9%	33.6%	30.4%	11.5%		
	Total	1638	63.7%	45.7%	40.6%	10.4%		
Fall 2007	UTSA Degree Seeking	1564	65.4%	47.4%	41.8%			
	CAP Student	203	42.4%	37.4%	32.5%			
	Total	1767	62.8%	46.2%	40.7%			
Fall 2008	UTSA Degree Seeking	1514	67.0%	51.8%				
	CAP Student	281	34.9%	28.5%				
	Total	1795	62.0%	48.2%				
Fall 2009	UTSA Degree Seeking	1458	65.6%					
	CAP Student	283	40.3%					
	Total	1741	61.5%					

Retention and Graduation for First Time Full Time Cohort by Ethnicity

Other			Percent Retained			Percent Graduated		
Cohort	Student Type	# in Cohort	One Year	Two Years	Three Years	Four Years	Five Years	Six Years
Fall 2000	UTSA Degree Seeking	76	64.5%	53.9%	51.3%	13.2%	30.3%	31.6%
	Total	76	64.5%	53.9%	51.3%	13.2%	30.3%	31.6%
Fall 2001	UTSA Degree Seeking	115	75.7%	61.7%	53.0%	14.8%	32.2%	42.6%
	CAP Student	42	33.3%	28.6%	14.3%	4.8%	14.3%	19.0%
	Total	157	64.3%	52.9%	42.7%	12.1%	27.4%	36.3%
Fall 2002	UTSA Degree Seeking	183	77.0%	66.1%	54.6%	16.4%	31.7%	44.3%
	CAP Student	98	31.6%	23.5%	20.4%	4.1%	12.2%	17.3%
	Total	281	61.2%	51.2%	42.7%	12.1%	24.9%	34.9%
Fall 2003	UTSA Degree Seeking	217	71.9%	59.4%	57.1%	15.2%	34.1%	45.2%
	CAP Student	209	23.9%	18.7%	17.2%	2.9%	8.1%	11.0%
	Total	426	48.4%	39.4%	37.6%	9.2%	21.4%	28.4%
Fall 2004	UTSA Degree Seeking	248	67.7%	54.0%	48.4%	12.5%	29.8%	35.5%
	CAP Student	156	19.9%	14.7%	12.8%	3.2%	8.3%	10.3%
	Total	404	49.3%	38.9%	34.7%	8.9%	21.5%	25.7%
Fall 2005	UTSA Degree Seeking	283	68.6%	51.9%	45.6%	11.7%	29.0%	
	CAP Student	230	37.8%	29.1%	27.8%	9.1%	17.0%	
	Total	513	54.8%	41.7%	37.6%	10.5%	23.6%	
Fall 2006	UTSA Degree Seeking	301	68.8%	52.8%	44.5%	11.3%		
	CAP Student	265	26.4%	21.9%	17.0%	4.5%		
	Total	566	48.9%	38.3%	31.6%	8.1%		
Fall 2007	UTSA Degree Seeking	358	73.5%	55.3%	48.6%			
	CAP Student	224	36.2%	29.5%	24.6%			
	Total	582	59.1%	45.4%	39.3%			
Fall 2008	UTSA Degree Seeking	308	65.6%	52.6%				
	CAP Student	284	18.3%	16.9%				
	Total	592	42.9%	35.5%				
Fall 2009	UTSA Degree Seeking	318	74.5%					
	CAP Student	286	28.7%					
	Total	604	52.8%					