

# *New Undergraduates*

The UTSA Fact Book  
Office of Institutional Research

## **New Student Applications**

The Applied, Accepted, and Enrolled information comes from the Coordinating Board Admissions file (CBM00B), this file contains only the Summer and Fall applications for each year. Only students who have never applied at the level are included in this information. Note that although many new students enter UTSA each year only students who are first time students seeking a degree at UTSA are included in the Cohort for graduation and retention information. For more information on this topic please contact the Office of Institutional Research at (210) 458-4706

## **Race/Ethnicity Reporting Changes**

As of Summer 2010 a new Race/Ethnicity reporting schema has been adopted based on Federal requirements. Students now have the choice to identify multiple races on the forms collected by the University of Texas at San Antonio. This information is stored as the student has selected, however for reporting purposes a single category has been used. If a student was an International student they would be assigned the International category. If a student is Hispanic, regardless of race indicated, they were assigned to the Hispanic category. Students who chose multiple races were assigned to the Two or more races category. Finally students who chose only one race were assigned to the race category they had chosen. If a student was not International, not Hispanic and did not chose any Race category they were assigned to the Unknown category. In addition to this update the former Asian/Pacific Islander category has now been separated into two categories, one is Asian and the other is Native Hawaiian or Pacific Islander.

### **New Category**

White Non-Hispanic

Black Non-Hispanic

Hispanic

Asian

Native Hawaiian or Other Pacific Islander

American Indian or Alaskan Native

Two or more races

International

Unknown or Not Reported

### **Old Category**

White Non-Hispanic

Black Non-Hispanic

Hispanic

Asian or Pacific Islander

Asian or Pacific Islander

American Indian or Alaskan Native

N/A

International

Unknown or Not Reported

## First Time Undergraduates Applied, Accepted, and Enrolled

	2007	2008	2009	2010	2011
<b>Applied</b>	11,475	13,259	12,270	13,603	14,650
<b>Accepted</b>	10,163	10,949	10,426	10,724	11,450
<b>%Accepted</b>	88.6	82.6	85.0	78.8	78.2
<b>Enrolled</b>	4,837	4,849	4,883	5,095	5,055
<b>%Enrolled</b>	47.6	44.3	46.8	47.5	44.1

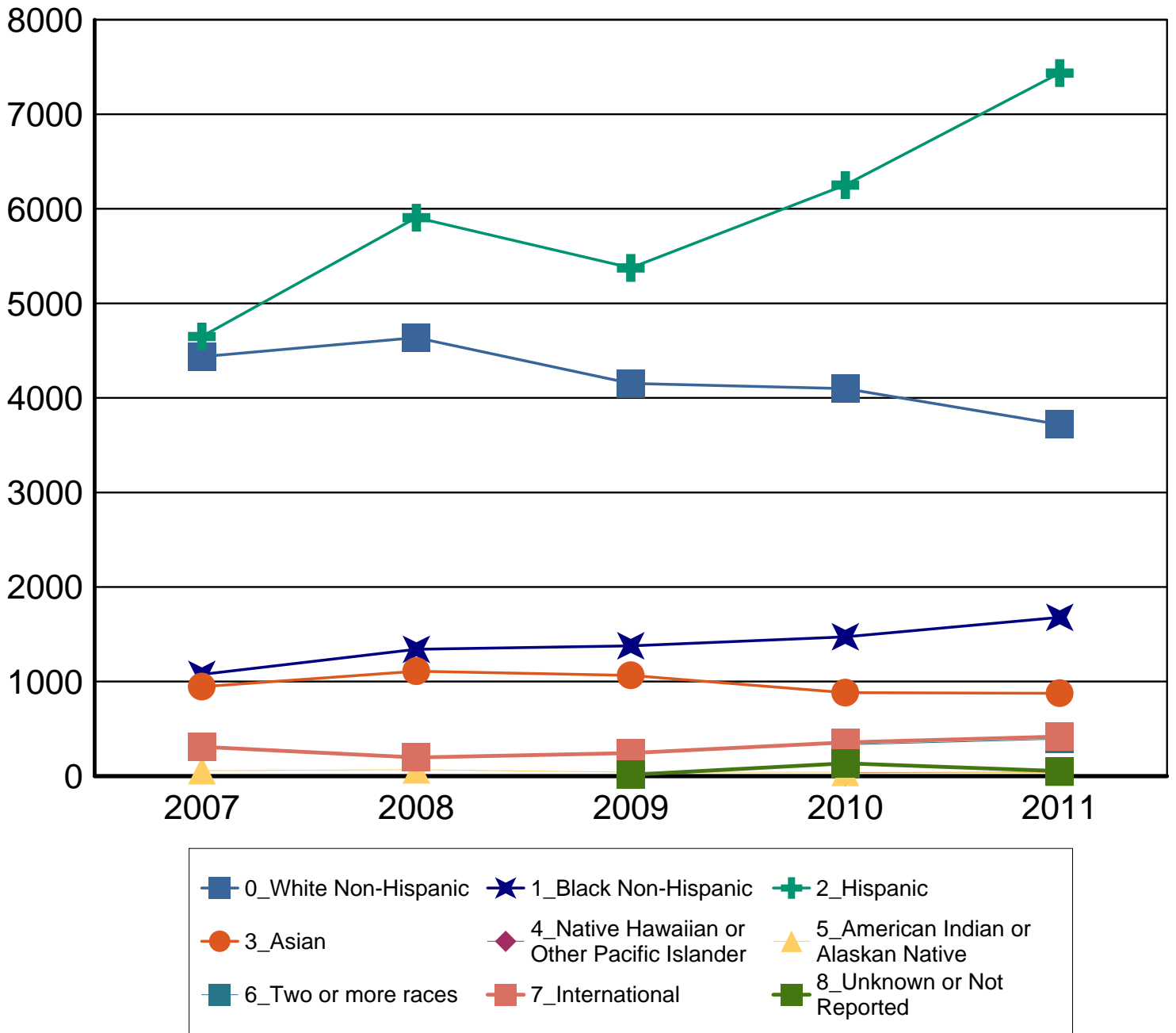
## First Time Undergraduates Applied, Accepted, and Enrolled by Ethnicity

		2007	2008	2009	2010	2011
<b>White Non-Hispanic</b>	<b>Applied</b>	4,436	4,638	4,153	4,098	3,719
	<b>Accepted</b>	4,023	4,071	3,730	3,516	3,245
	<b>%Accepted</b>	90.7	87.8	89.8	85.8	87.3
	<b>Enrolled</b>	2,040	1,921	1,840	1,681	1,459
	<b>%Enrolled</b>	50.7	47.2	49.3	47.8	45.0
<b>Black Non-Hispanic</b>	<b>Applied</b>	1,076	1,341	1,378	1,473	1,679
	<b>Accepted</b>	872	1,005	1,025	969	1,078
	<b>%Accepted</b>	81.0	74.9	74.4	65.8	64.2
	<b>Enrolled</b>	438	494	559	550	542
	<b>%Enrolled</b>	50.2	49.2	54.5	56.8	50.3
<b>Hispanic</b>	<b>Applied</b>	4,649	5,906	5,375	6,251	7,436
	<b>Accepted</b>	4,081	4,683	4,451	4,751	5,563
	<b>%Accepted</b>	87.8	79.3	82.8	76.0	74.8
	<b>Enrolled</b>	1,778	1,836	1,850	2,174	2,242
	<b>%Enrolled</b>	43.6	39.2	41.6	45.8	40.3
<b>Asian</b>	<b>Applied</b>	946	1,109	1,065	882	876
	<b>Accepted</b>	864	972	964	747	760
	<b>%Accepted</b>	91.3	87.6	90.5	84.7	86.8
	<b>Enrolled</b>	433	492	505	345	378
	<b>%Enrolled</b>	50.1	50.6	52.4	46.2	49.7
<b>Native Hawaiian or Other Pacific Islander</b>	<b>Applied</b>	0	0	0	36	41
	<b>Accepted</b>	0	0	0	27	34
	<b>%Accepted</b>	0.0	0.0	0.0	75.0	82.9
	<b>Enrolled</b>	0	0	0	18	14
	<b>%Enrolled</b>	0.0	0.0	0.0	66.7	41.2
<b>American Indian or Alaskan Native</b>	<b>Applied</b>	58	68	41	41	36
	<b>Accepted</b>	54	60	33	31	27
	<b>%Accepted</b>	93.1	88.2	80.5	75.6	75.0
	<b>Enrolled</b>	26	30	12	11	12
	<b>%Enrolled</b>	48.1	50.0	36.4	35.5	44.4
<b>Two or more races</b>	<b>Applied</b>	0	0	0	331	392
	<b>Accepted</b>	0	0	0	269	316
	<b>%Accepted</b>	0.0	0.0	0.0	81.3	80.6
	<b>Enrolled</b>	0	0	0	126	154
	<b>%Enrolled</b>	0.0	0.0	0.0	46.8	48.7

		2007	2008	2009	2010	2011
<b>International</b>	<b>Applied</b>	310	197	244	356	418
	<b>Accepted</b>	269	158	213	315	381
	<b>%Accepted</b>	86.8	80.2	87.3	88.5	91.1
	<b>Enrolled</b>	122	76	109	137	226
	<b>%Enrolled</b>	45.4	48.1	51.2	43.5	59.3
<b>Unknown or Not Reported</b>	<b>Applied</b>	0	0	14	135	53
	<b>Accepted</b>	0	0	10	99	46
	<b>%Accepted</b>	0.0	0.0	71.4	73.3	86.8
	<b>Enrolled</b>	0	0	8	53	28
	<b>%Enrolled</b>	0.0	0.0	80.0	53.5	60.9
<b>Applied</b>	11,475	13,259	12,270	13,603	14,650	
<b>Accepted</b>	10,163	10,949	10,426	10,724	11,450	
<b>% Accepted</b>	88.6	82.6	85.0	78.8	78.2	
<b>Enrolled</b>	4,837	4,849	4,883	5,095	5,055	
<b>% Enrolled of Accepted</b>	47.6	44.3	46.8	47.5	44.1	

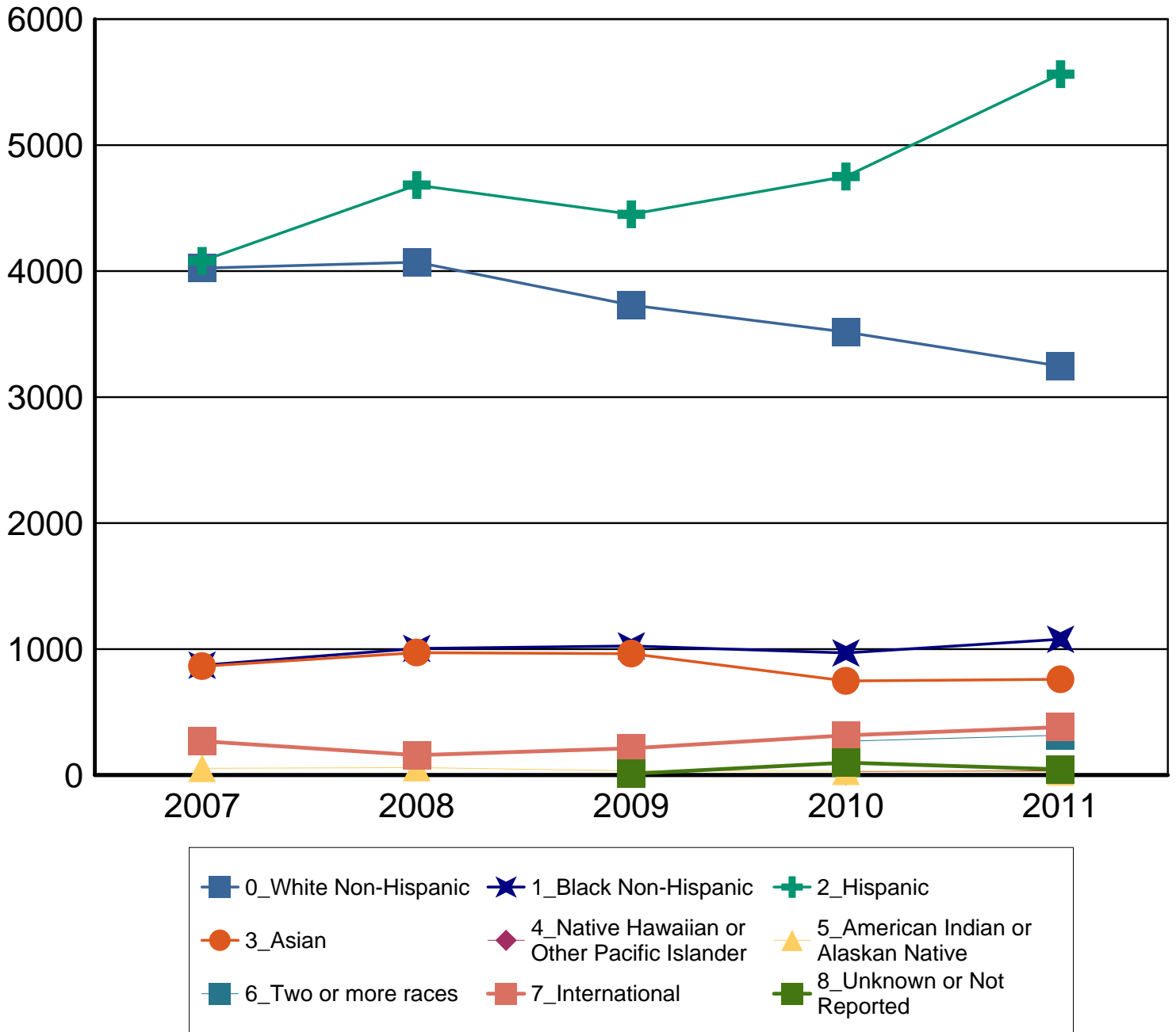
For details on new Race/Ethnicity categories please see page one of this document

# Number of New First Time Undergraduates Applied



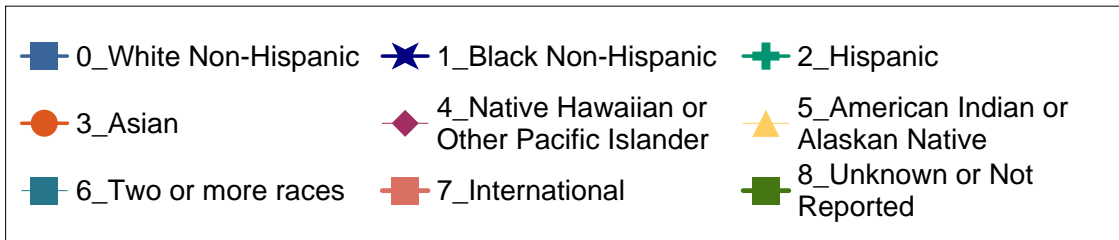
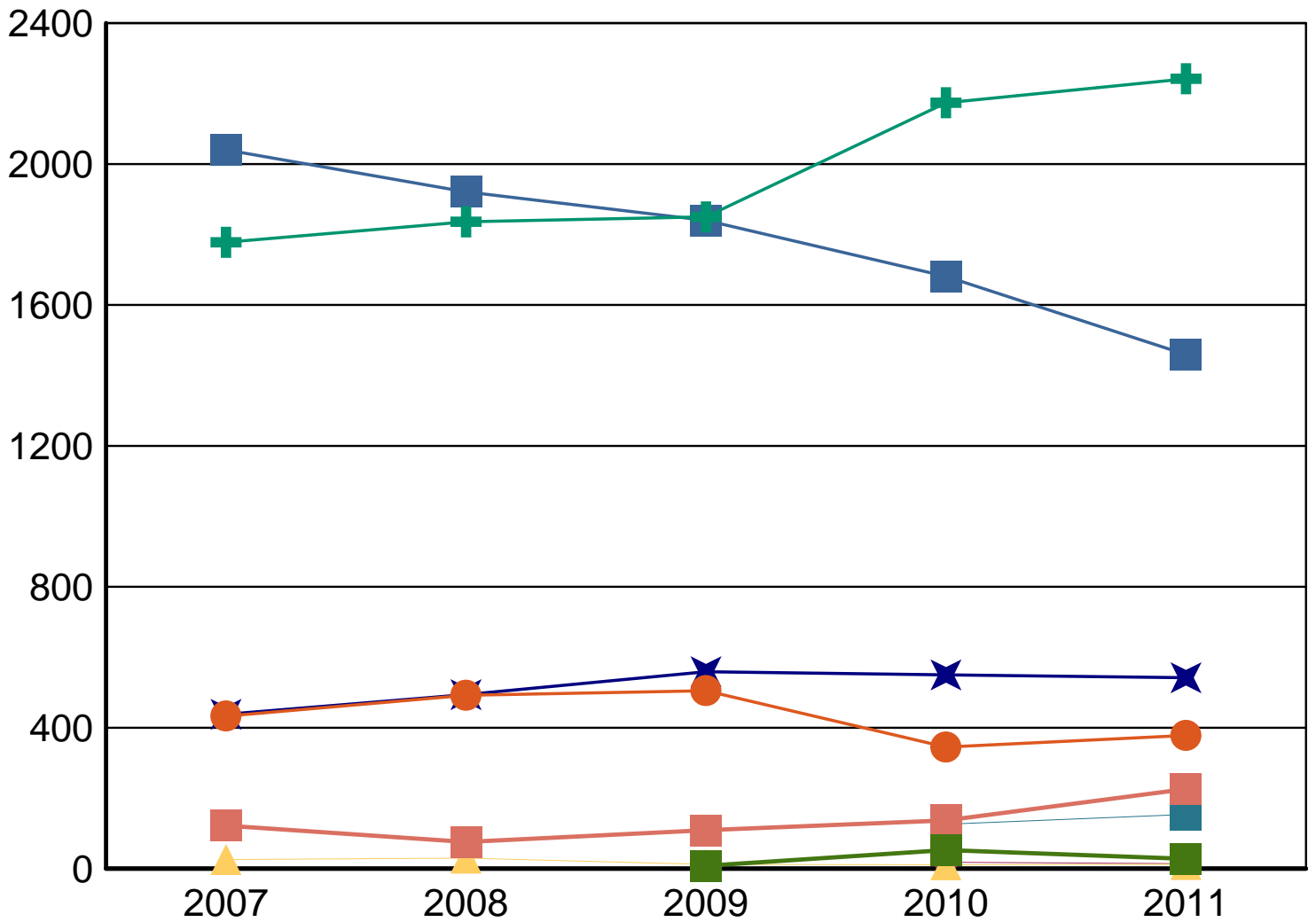
For details on new Race/Ethnicity categories please see page one of this document

# Number of New First Time Undergraduates Accepted



For details on new Race/Ethnicity categories please see page one of this document

# Number of New First Time Undergraduates Enrolled



**First Time Undergraduates Applied, Accepted, and Enrolled by Gender**

		<b>2007</b>	<b>2008</b>	<b>2009</b>	<b>2010</b>	<b>2011</b>
<b>Female</b>	<b>Applied</b>	5,930	7,205	6,414	6,841	7,563
	<b>Accepted</b>	5,272	5,962	5,481	5,339	5,904
	<b>%Accepted</b>	88.9	82.7	85.5	78.0	78.1
	<b>Enrolled</b>	2,309	2,470	2,400	2,359	2,368
	<b>%Enrolled</b>	43.8	41.4	43.8	44.2	40.1
<b>Male</b>	<b>Applied</b>	5,545	6,054	5,856	6,762	7,087
	<b>Accepted</b>	4,891	4,987	4,945	5,385	5,546
	<b>%Accepted</b>	88.2	82.4	84.4	79.6	78.3
	<b>Enrolled</b>	2,528	2,379	2,483	2,736	2,687
	<b>%Enrolled</b>	51.7	47.7	50.2	50.8	48.4
<b>Total</b>	<b>Applied</b>	11,475	13,259	12,270	13,603	14,650
	<b>Accepted</b>	10,163	10,949	10,426	10,724	11,450
	<b>%Accepted</b>	88.6	82.6	85.0	78.8	78.2
	<b>Enrolled</b>	4,837	4,849	4,883	5,095	5,055
	<b>%Enrolled</b>	47.6	44.3	46.8	47.5	44.1

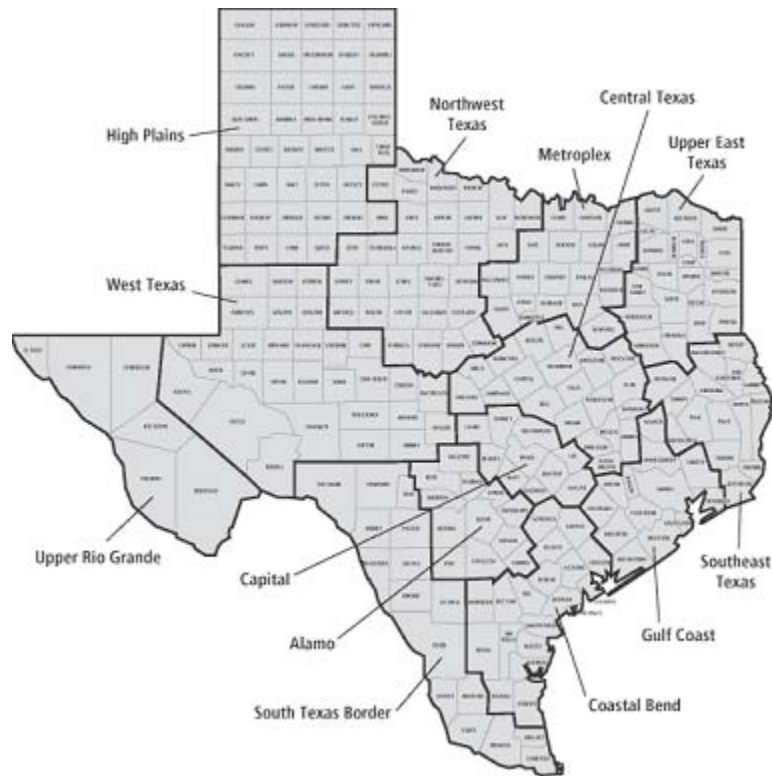


**First Time Undergraduates Applied, Accepted, and Enrolled by Economic Region**

		<b>2007</b>	<b>2008</b>	<b>2009</b>	<b>2010</b>	<b>2011</b>
<b>Alamo</b>	<b>Applied</b>	3,565	4,151	3,812	4,194	4,193
	<b>Accepted</b>	3,222	3,399	3,245	3,401	3,294
	<b>%Accepted</b>	90.4	81.9	85.1	81.1	78.6
	<b>Enrolled</b>	1,727	1,683	1,672	1,844	1,725
	<b>%Enrolled</b>	53.6	49.5	51.5	54.2	52.4
<b>Capital</b>	<b>Applied</b>	1,326	1,579	1,575	1,726	1,688
	<b>Accepted</b>	1,156	1,300	1,310	1,348	1,303
	<b>%Accepted</b>	87.2	82.3	83.2	78.1	77.2
	<b>Enrolled</b>	609	652	660	642	547
	<b>%Enrolled</b>	52.7	50.2	50.4	47.6	42.0
<b>Central</b>	<b>Applied</b>	199	163	190	246	314
	<b>Accepted</b>	172	135	169	186	239
	<b>%Accepted</b>	86.4	82.8	88.9	75.6	76.1
	<b>Enrolled</b>	83	53	87	86	119
	<b>%Enrolled</b>	48.3	39.3	51.5	46.2	49.8
<b>Gulf Coast</b>	<b>Applied</b>	3,106	3,616	3,367	3,757	3,937
	<b>Accepted</b>	2,761	3,075	2,883	3,022	3,118
	<b>%Accepted</b>	88.9	85.0	85.6	80.4	79.2
	<b>Enrolled</b>	1,333	1,422	1,433	1,419	1,367
	<b>%Enrolled</b>	48.3	46.2	49.7	47.0	43.8
<b>High Plains</b>	<b>Applied</b>	46	39	40	25	50
	<b>Accepted</b>	40	32	37	22	45
	<b>%Accepted</b>	87.0	82.1	92.5	88.0	90.0
	<b>Enrolled</b>	18	10	15	11	21
	<b>%Enrolled</b>	45.0	31.3	40.5	50.0	46.7
<b>Metroplex</b>	<b>Applied</b>	603	713	594	790	783
	<b>Accepted</b>	527	610	516	588	611
	<b>%Accepted</b>	87.4	85.6	86.9	74.4	78.0
	<b>Enrolled</b>	245	235	227	246	257
	<b>%Enrolled</b>	46.5	38.5	44.0	41.8	42.1
<b>Northwest Texas</b>	<b>Applied</b>	45	35	40	41	39
	<b>Accepted</b>	41	30	34	34	31
	<b>%Accepted</b>	91.1	85.7	85.0	82.9	79.5
	<b>Enrolled</b>	17	14	13	17	13
	<b>%Enrolled</b>	41.5	46.7	38.2	50.0	41.9
<b>Not In Texas</b>	<b>Applied</b>	417	453	433	486	615
	<b>Accepted</b>	347	363	345	380	522
	<b>%Accepted</b>	83.2	80.1	79.7	78.2	84.9
	<b>Enrolled</b>	126	135	138	169	255
	<b>%Enrolled</b>	36.3	37.2	40.0	44.5	48.9
<b>South Texas</b>	<b>Applied</b>	1,784	2,041	1,837	1,843	2,404
	<b>Accepted</b>	1,554	1,634	1,548	1,378	1,829
	<b>%Accepted</b>	87.1	80.1	84.3	74.8	76.1
	<b>Enrolled</b>	542	501	498	512	578
	<b>%Enrolled</b>	34.9	30.7	32.2	37.2	31.6
<b>Southeast Texas</b>	<b>Applied</b>	115	155	121	123	150
	<b>Accepted</b>	104	130	104	83	105
	<b>%Accepted</b>	90.4	83.9	86.0	67.5	70.0
	<b>Enrolled</b>	48	54	47	38	47
	<b>%Enrolled</b>	46.2	41.5	45.2	45.8	44.8

		2007	2008	2009	2010	2011
<b>Upper East Texas</b>	<b>Applied</b>	33	26	31	38	39
	<b>Accepted</b>	29	21	30	30	27
	<b>%Accepted</b>	87.9	80.8	96.8	78.9	69.2
	<b>Enrolled</b>	12	9	14	15	9
	<b>%Enrolled</b>	41.4	42.9	46.7	50.0	33.3
<b>Upper Rio Grande</b>	<b>Applied</b>	146	199	138	245	349
	<b>Accepted</b>	126	147	122	177	257
	<b>%Accepted</b>	86.3	73.9	88.4	72.2	73.6
	<b>Enrolled</b>	39	50	42	64	83
	<b>%Enrolled</b>	31.0	34.0	34.4	36.2	32.3
<b>West Texas</b>	<b>Applied</b>	90	89	92	89	89
	<b>Accepted</b>	84	73	83	75	69
	<b>%Accepted</b>	93.3	82.0	90.2	84.3	77.5
	<b>Enrolled</b>	38	31	37	32	34
	<b>%Enrolled</b>	45.2	42.5	44.6	42.7	49.3
<b>Total</b>	<b>Applied</b>	11,475	13,259	12,270	13,603	14,650
	<b>Accepted</b>	10,163	10,949	10,426	10,724	11,450
	<b>%Accepted</b>	88.6	82.6	85.0	78.8	78.2
	<b>Enrolled</b>	4,837	4,849	4,883	5,095	5,055
	<b>%Enrolled</b>	47.6	44.3	46.8	47.5	44.1

The map of the regions below comes from the Texas Comptroller's website at <http://www.window.state.tx.us/ecodata/regional/regions.html>. A full listing of counties is on following page.



## Texas Economic Regions

**Alamo:** Atascosa, Bandera, Bexar, Calhoun, Comal, De Witt, Frio, Gillespie, Goliad, Gonzales, Guadalupe, Jackson, Karnes, Kendall, Kerr, Lavaca, Medina, Victoria, Wilson

**Capital:** Bastrop, Blanco, Burnet, Caldwell, Fayette, Hays, Lee, Llano, Travis, Williamson

**Central:** Bell, Bosque, Brazos, Burleson, Coryell, Falls, Freestone, Grimes, Hamilton, Hill, Lampasas, Leon, Limestone, Madison, McLennan, Milam, Mills, Robertson, San Saba, Washington

**Gulf Coast:** Austin, Brazoria, Chambers, Colorado, Fort Bend, Galveston, Harris, Liberty, Matagorda, Montgomery, Walker, Waller, Wharton

**High Plains:** Armstrong, Bailey, Briscoe, Carson, Castro, Childress, Cochran, Collingsworth Crosby, Dallam, Deaf Smith, Dickens, Donley, Floyd, Garza, Gray, Hale, Hall, Hansford, Hartley, Hemphill, Hockley, Hutchinson, King, Lamb, Lipscomb, Lubbock, Lynn, Moore, Motley, Ochiltree, Oldham, Parmer, Potter, Randall, Roberts, Sherman, Swisher, Terry, Wheeler, Yoakum

**Metroplex:** Collin, Cooke, Dallas, Denton, Ellis, Erath, Fannin, Grayson, Hood, Hunt, Johnson, Kaufman, Navarro, Palo, Pinto, Parker, Rockwall, Somervell, Tarrant, Wise

**Northwest Texas:** Archer, Baylor, Brown, Callahan, Clay, Coleman, Comanche, Cottle, Eastland, Fisher, Foard, Hardeman, Haskell, Jack, Jones, Kent, Knox, Mitchell, Montague, Nolan, Runnels, Scurry, Shackelford, Stephens, Stonewall, Taylor, Throckmorton, Wichita, Wilbarger, Young

**South Texas:** Aransas, Bee, Brooks, Cameron, Dimmit, Duval, Edwards, Hidalgo, Jim Hogg, Jim Wells, Kenedy, Kinney, Kleberg, La Salle, Live Oak, Maverick, McMullen, Nueces, Real, Refugio, San Patricio, Starr, Uvalde, Val Verde, Webb, Willacy, Zapata, Zavala

**Southeast Texas:** Angelina, Hardin, Houston, Jasper, Jefferson, Nacogdoches, Newton, Orange, Polk, Sabine, San Augustine, San Jacinto, Shelby, Trinity, Tyler

**Upper East Texas:** Anderson, Bowie, Camp, Cass, Cherokee, Delta, Franklin, Gregg, Harrison, Henderson, Hopkins, Lamar, Marion, Morris, Panola, Rains, Red River, Rusk, Smith, Titus, Upshur, Van Zandt, Wood

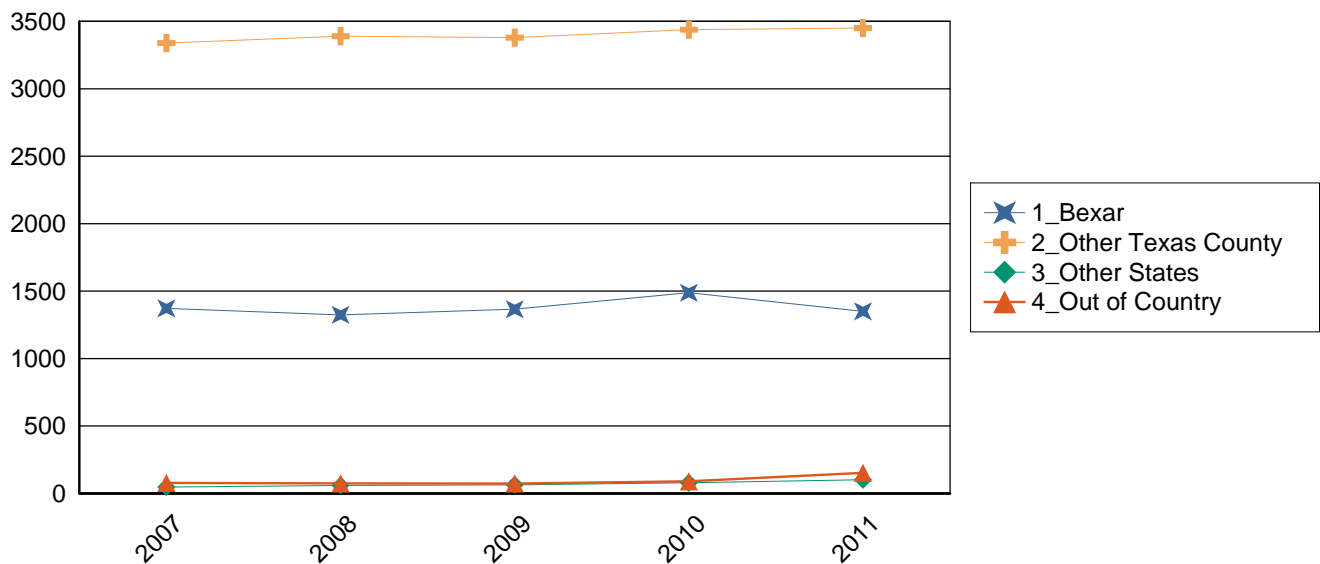
**Upper Rio Grande:** Brewster, Culberson, El Paso, Hudspeth, Jeff Davis, Presidio

**West Texas:** Andrews, Borden, Coke, Concho, Crane, Crockett, Dawson, Ector, Gaines, Glasscock, Howard, Irion, Kimble, Loving, Martin, Mason, McCulloch, Menard, Midland, Pecos, Reagan, Reeves, Schleicher, Sterling, Sutton, Terrell, Tom Green, Upton, Ward, Winkler

## First Time Undergraduates Applied, Accepted, and Enrolled by Residence Category

		2007	2008	2009	2010	2011
<b>Bexar</b>	<b>Applied</b>	2,814	3,321	3,120	3,347	3,340
	<b>Accepted</b>	2,549	2,698	2,658	2,734	2,611
	<b>%Accepted</b>	90.6	81.2	85.2	81.7	78.2
	<b>Enrolled</b>	1,372	1,324	1,366	1,488	1,350
	<b>%Enrolled</b>	53.8	49.1	51.4	54.4	51.7
<b>Other Texas County</b>	<b>Applied</b>	8,244	9,485	8,717	9,770	10,695
	<b>Accepted</b>	7,267	7,888	7,423	7,610	8,317
	<b>%Accepted</b>	88.1	83.2	85.2	77.9	77.8
	<b>Enrolled</b>	3,339	3,390	3,379	3,438	3,450
	<b>%Enrolled</b>	45.9	43.0	45.5	45.2	41.5
<b>Other States</b>	<b>Applied</b>	247	305	253	272	324
	<b>Accepted</b>	195	228	195	196	263
	<b>%Accepted</b>	78.9	74.8	77.1	72.1	81.2
	<b>Enrolled</b>	48	60	64	79	102
	<b>%Enrolled</b>	24.6	26.3	32.8	40.3	38.8
<b>Out of Country</b>	<b>Applied</b>	170	148	180	214	291
	<b>Accepted</b>	152	135	150	184	259
	<b>%Accepted</b>	89.4	91.2	83.3	86.0	89.0
	<b>Enrolled</b>	78	75	74	90	153
	<b>%Enrolled</b>	51.3	55.6	49.3	48.9	59.1
<b>Total</b>	<b>Applied</b>	11,475	13,259	12,270	13,603	14,650
	<b>Accepted</b>	10,163	10,949	10,426	10,724	11,450
	<b>%Accepted</b>	88.6	82.6	85.0	78.8	78.2
	<b>Enrolled</b>	4,837	4,849	4,883	5,095	5,055
	<b>%Enrolled</b>	47.6	44.3	46.8	47.5	44.1

## New First Time Undergraduate Enrollment by Residence



## First Time Undergraduates Applied, Accepted, and Enrolled by Admission Decision

		2007	2008	2009	2010	2011
<b>Accepted and Ranked in Top 10% of High School</b>	<b>Applied</b>	1,104	1,495	1,273	1,461	1,876
	<b>Accepted</b>	1,104	1,495	1,273	1,461	1,876
	<b>%Accepted</b>	100.0	100.0	100.0	100.0	100.0
	<b>Enrolled</b>	337	418	398	535	632
	<b>%Enrolled</b>	30.5	28.0	31.3	36.6	33.7
<b>Accepted and Ranked in 11 - 25% of High School</b>	<b>Applied</b>	2,472	3,081	3,012	3,208	3,797
	<b>Accepted</b>	2,472	3,081	3,012	3,208	3,797
	<b>%Accepted</b>	100.0	100.0	100.0	100.0	100.0
	<b>Enrolled</b>	1,077	1,270	1,329	1,510	1,666
	<b>%Enrolled</b>	43.6	41.2	44.1	47.1	43.9
<b>Accepted on Provisional Basis</b>	<b>Applied</b>	808	773	744	712	581
	<b>Accepted</b>	808	773	744	712	581
	<b>%Accepted</b>	100.0	100.0	100.0	100.0	100.0
	<b>Enrolled</b>	506	458	466	458	389
	<b>%Enrolled</b>	62.6	59.2	62.6	64.3	67.0
<b>Accepted on Other Criteria</b>	<b>Applied</b>	5,779	5,600	5,397	5,343	5,196
	<b>Accepted</b>	5,779	5,600	5,397	5,343	5,196
	<b>%Accepted</b>	100.0	100.0	100.0	100.0	100.0
	<b>Enrolled</b>	2,917	2,703	2,690	2,592	2,368
	<b>%Enrolled</b>	50.5	48.3	49.8	48.5	45.6
<b>Denied</b>	<b>Applied</b>	766	1,493	1,567	2,158	2,978
	<b>Accepted</b>	0	0	0	0	0
	<b>%Accepted</b>	0.0	0.0	0.0	0.0	0.0
	<b>Enrolled</b>					
	<b>%Enrolled</b>					
<b>Withdrew Application</b>	<b>Applied</b>	546	817	277	721	222
	<b>Accepted</b>	0	0	0	0	0
	<b>%Accepted</b>	0.0	0.0	0.0	0.0	0.0
	<b>Enrolled</b>					
	<b>%Enrolled</b>					
<b>Total</b>		11,475	13,259	12,270	13,603	14,650
		10,163	10,949	10,426	10,724	11,450
		88.6	82.6	85.0	78.8	78.2
		4,837	4,849	4,883	5,095	5,055
		47.6	44.3	46.8	47.5	44.1

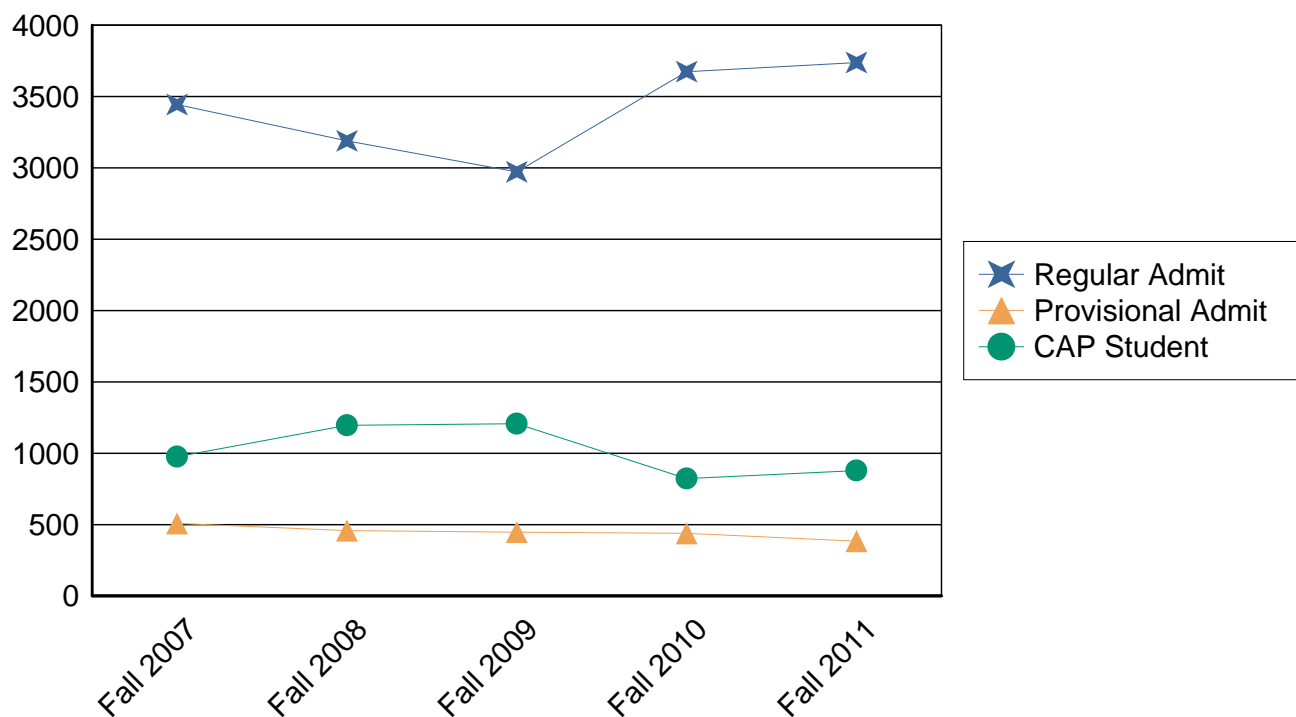
## **UTSA First Time Undergraduate Information**

This section includes students who began at UTSA, this includes the students who are part of the Coordinated Admissions Program with the University of Texas at Austin and other students who do not plan to get a degree from UTSA. For more information on this topic please contact the Office of Institutional Research at (210) 458-4706.

## New Students by Admission Type

	Fall 2007	Fall 2008	Fall 2009	Fall 2010	Fall 2011
<b>Regular Admit</b>	3,444 69.9%	3,189 65.8%	2,972 64.2%	3,674 74.4%	3,738 74.7%
<b>Provisional Admit</b>	508 10.3%	458 9.5%	447 9.7%	439 8.9%	384 7.7%
<b>CAP Student</b>	976 19.8%	1,196 24.7%	1,207 26.1%	823 16.7%	879 17.6%
<b>Total</b>	4,928 100.0%	4,843 100.0%	4,626 100.0%	4,936 100.0%	5,001 100.0%

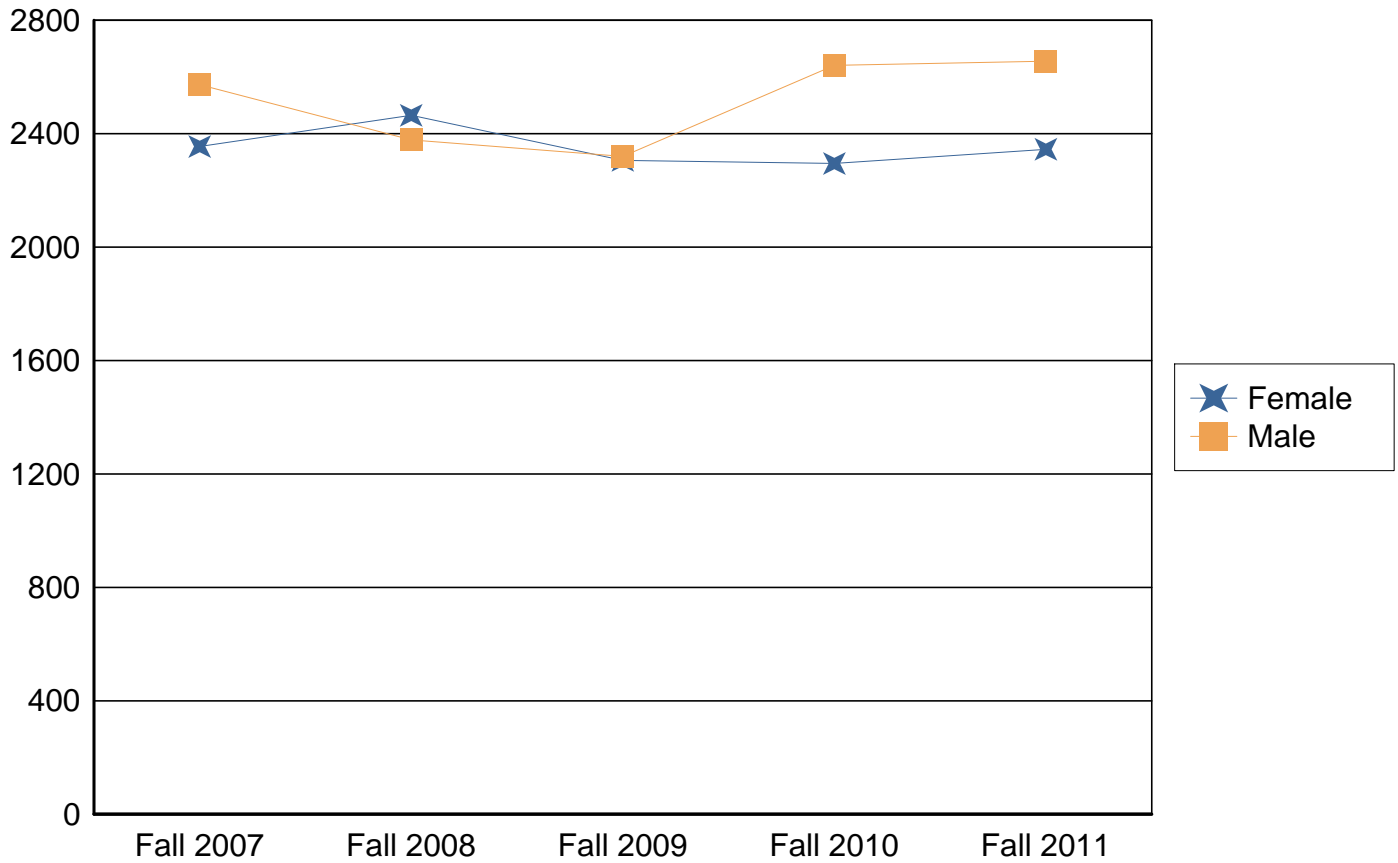
## New Students by Admission Type



## UTSA First Time Undergraduates by Gender

	Fall 2007	Fall 2008	Fall 2009	Fall 2010	Fall 2011
<b>Female</b>	2,355 47.8%	2,465 50.9%	2,306 49.8%	2,295 46.5%	2,345 46.9%
<b>Male</b>	2,573 52.2%	2,378 49.1%	2,320 50.2%	2,641 53.5%	2,656 53.1%
<b>Total</b>	4,928 100.0%	4,843 100.0%	4,626 100.0%	4,936 100.0%	5,001 100.0%

## UTSA First Time Undergraduates by Gender



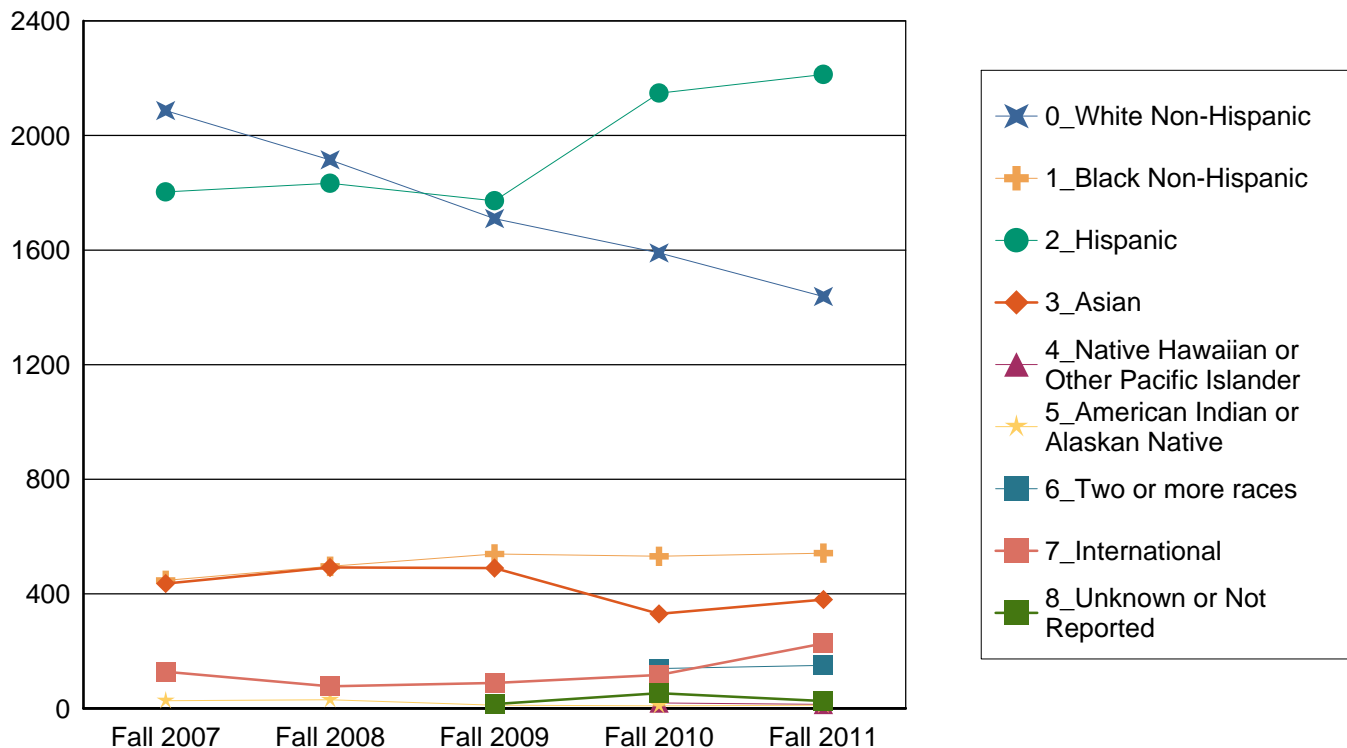


## UTSA First Time Undergraduates by Ethnicity

	Fall 2007	Fall 2008	Fall 2009	Fall 2010	Fall 2011
<b>White Non-Hispanic</b>	2,087 42.3%	1,915 39.5%	1,710 37.0%	1,590 32.2%	1,438 28.8%
<b>Black Non-Hispanic</b>	447 9.1%	496 10.2%	539 11.7%	531 10.8%	542 10.8%
<b>Hispanic</b>	1,803 36.6%	1,833 37.8%	1,772 38.3%	2,148 43.5%	2,213 44.3%
<b>Asian</b>	436 8.8%	492 10.2%	490 10.6%	330 6.7%	380 7.6%
<b>Native Hawaiian or Other Pacific Islander</b>	0 0.0%	0 0.0%	0 0.0%	19 0.4%	14 0.3%
<b>American Indian or Alaskan Native</b>	27 0.5%	30 0.6%	11 0.2%	9 0.2%	11 0.2%
<b>Two or more races</b>	0 0.0%	0 0.0%	0 0.0%	139 2.8%	150 3.0%
<b>International</b>	128 2.6%	77 1.6%	89 1.9%	117 2.4%	227 4.5%
<b>Unknown or Not Reported</b>	0 0.0%	0 0.0%	15 0.3%	53 1.1%	26 0.5%
<b>Total</b>	4,928 100.0%	4,843 100.0%	4,626 100.0%	4,936 100.0%	5,001 100.0%

For details on new Race/Ethnicity categories please see page one of this document

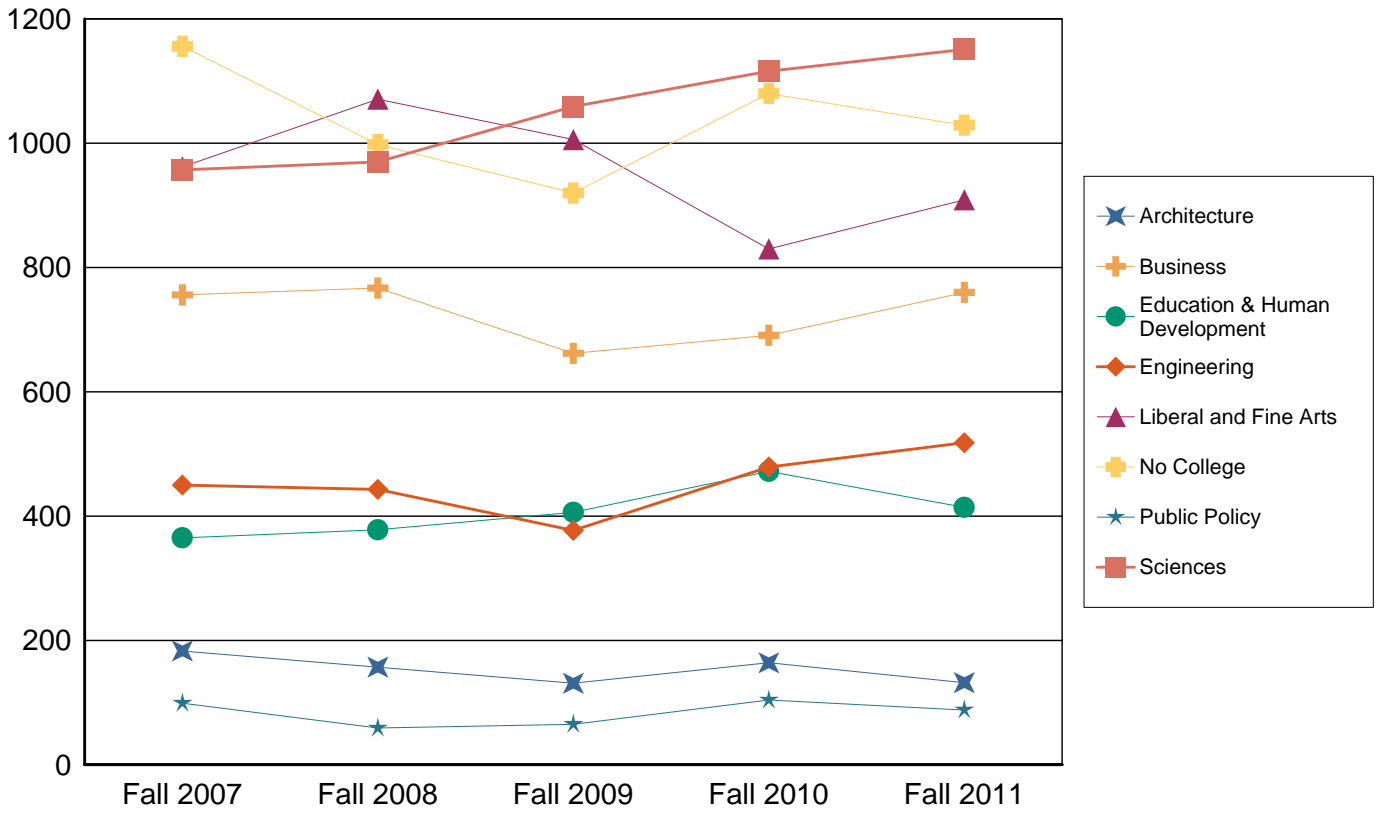
## UTSA First Time Undergraduates by Ethnicity



## UTSA First Time Undergraduates by College

	Fall 2007	Fall 2008	Fall 2009	Fall 2010	Fall 2011
<b>Architecture</b>	183 3.7%	157 3.2%	131 2.8%	164 3.3%	132 2.6%
<b>Business</b>	756 15.3%	767 15.8%	662 14.3%	691 14.0%	760 15.2%
<b>Education &amp; Human Development</b>	365 7.4%	378 7.8%	406 8.8%	472 9.6%	414 8.3%
<b>Engineering</b>	450 9.1%	443 9.1%	377 8.1%	479 9.7%	518 10.4%
<b>Liberal and Fine Arts</b>	962 19.5%	1,071 22.1%	1,006 21.7%	830 16.8%	909 18.2%
<b>No College</b>	1,156 23.5%	998 20.6%	920 19.9%	1,080 21.9%	1,029 20.6%
<b>Public Policy</b>	99 2.0%	59 1.2%	65 1.4%	104 2.1%	88 1.8%
<b>Sciences</b>	957 19.4%	970 20.0%	1,059 22.9%	1,116 22.6%	1,151 23.0%
<b>Total</b>	4,928 100.0%	4,843 100.0%	4,626 100.0%	4,936 100.0%	5,001 100.0%

# UTSA First Time Undergraduates by College



**SAT and ACT Scores**

**UTSA First Time Undergraduates Average SAT Total**

	Fall 2007	Fall 2008	Fall 2009	Fall 2010	Fall 2011
<b>Regular Admit</b>	1,013	1,019	1,018	1,022	1,030
<b>Provisional Admit</b>	818	838	868	880	916
<b>CAP Student</b>	1,110	1,123	1,126	1,138	1,138
<b>Total</b>	1,015	1,029	1,032	1,029	1,042

**UTSA First Time Undergraduates 25th and 75th Percentile SAT Total**

		Fall 2007	Fall 2008	Fall 2009	Fall 2010	Fall 2011
<b>Regular Admit</b>	<b>25%</b>	930	940	940	940	950
	<b>75%</b>	1,090	1,100	1,100	1,100	1,110
<b>Provisional Admit</b>	<b>25%</b>	770	790	820	840	880
	<b>75%</b>	870	880	910	910	950
<b>CAP Student</b>	<b>25%</b>	1,020	1,040	1,040	1,050	1,060
	<b>75%</b>	1,200	1,210	1,220	1,220	1,220
<b>Total</b>	<b>25%</b>	910	930	930	935	950
	<b>75%</b>	1,110	1,130	1,130	1,120	1,130

**UTSA First Time Undergraduates Average SAT Verbal**

	Fall 2007	Fall 2008	Fall 2009	Fall 2010	Fall 2011
<b>Regular Admit</b>	498.7	499.7	497.6	498.6	501.8
<b>Provisional Admit</b>	405.4	413.8	426.8	428.8	447.1
<b>CAP Student</b>	540.9	545.5	548.1	553.6	550.7
<b>Total</b>	498.4	503.5	504.4	502.0	507.1

**UTSA First Time Undergraduates 25th and 75th Percentile SAT Verbal**

		Fall 2007	Fall 2008	Fall 2009	Fall 2010	Fall 2011
<b>Regular Admit</b>	<b>25%</b>	450	450	450	450	450
	<b>75%</b>	540	550	540	550	550
<b>Provisional Admit</b>	<b>25%</b>	380	380	400	400	410
	<b>75%</b>	440	450	460	460	480
<b>CAP Student</b>	<b>25%</b>	490	490	500	500	500
	<b>75%</b>	590	600	600	600	600
<b>Total</b>	<b>25%</b>	440	450	450	450	450
	<b>75%</b>	550	560	560	560	560

### UTSA First Time Undergraduates Average SAT Math

	Fall 2007	Fall 2008	Fall 2009	Fall 2010	Fall 2011
Regular Admit	515	519	520	523	529
Provisional Admit	413	424	441	451	469
CAP Student	570	577	578	584	588
<b>Total</b>	516	525	528	527	535

### UTSA First Time Undergraduates 25th and 75th Percentile SAT Math

		Fall 2007	Fall 2008	Fall 2009	Fall 2010	Fall 2011
Regular Admit	25%	460	470	470	470	480
	75%	560	570	570	570	580
Provisional Admit	25%	380	390	410	420	440
	75%	450	460	480	480	500
CAP Student	25%	520	520	520	530	540
	75%	620	630	630	640	630
<b>Total</b>		460	470	470	470	480
		570	580	580	580	580

### UTSA First Time Undergraduates Average ACT Composite

	Fall 2007	Fall 2008	Fall 2009	Fall 2010	Fall 2011
Regular Admit	21	21	21	21	22
Provisional Admit	16	17	17	18	18
CAP Student	23	24	24	24	24
<b>Total</b>	21	21	22	22	22

### UTSA First Time Undergraduates 25th and 75th Percentile ACT Composite

		Fall 2007	Fall 2008	Fall 2009	Fall 2010	Fall 2011
Regular Admit	25%	19	19	19	19	20
	75%	23	23	23	23	24
Provisional Admit	25%	15	15	16	17	17
	75%	18	18	18	19	19
CAP Student	25%	21	21	22	22	22
	75%	26	26	26	27	27
<b>Total</b>		18	19	19	19	20
		23	24	24	24	24

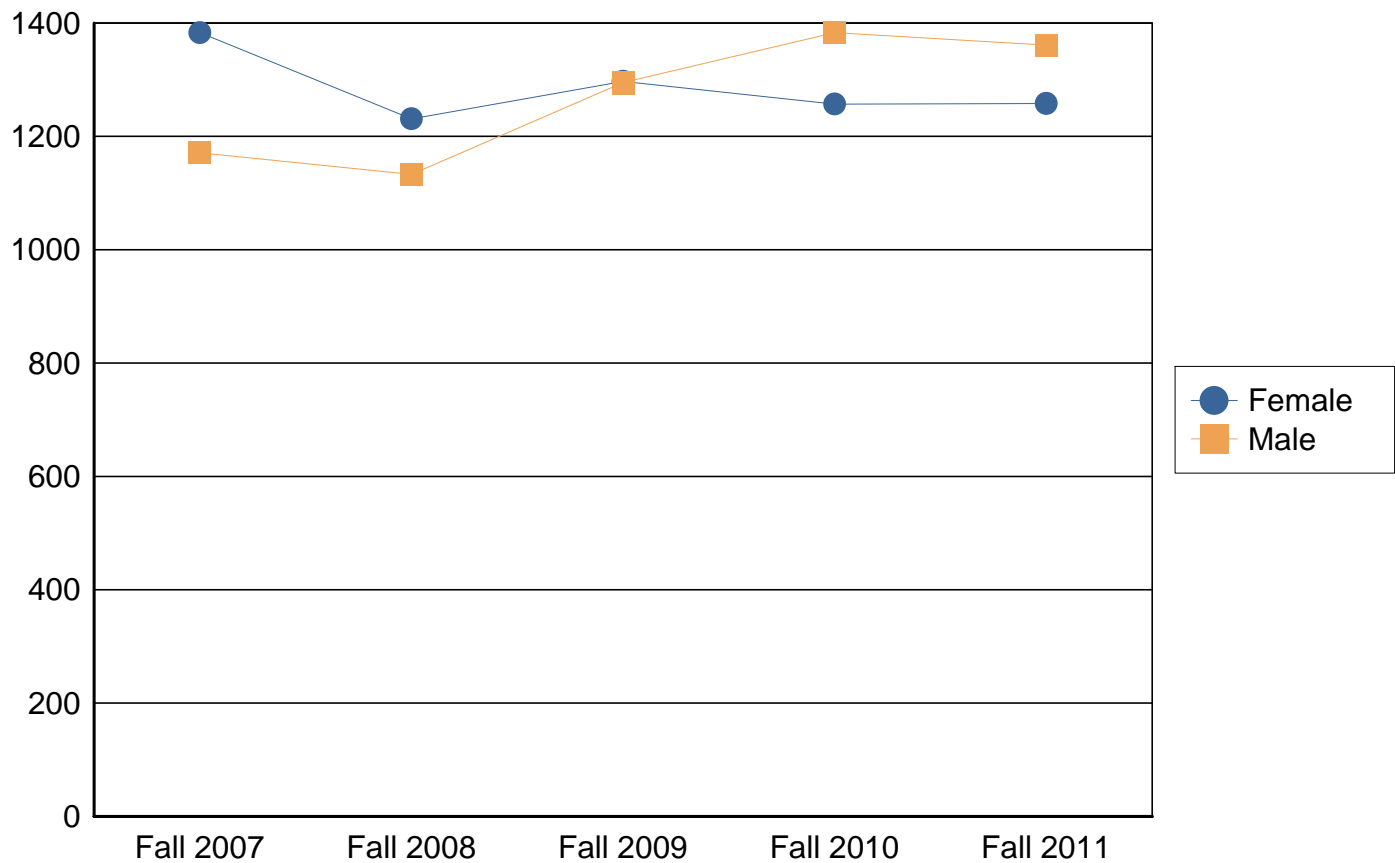
## **UTSA New Transfer Student Information**

This section includes all students who are transferring to UTSA from another university or community college. For more information on this topic please contact the Office of Institutional Research at (210) 458-4706.

## UTSA New Transfer Students by Gender

	Fall 2007	Fall 2008	Fall 2009	Fall 2010	Fall 2011
<b>Female</b>	1,383 54.2%	1,231 52.1%	1,297 50.0%	1,257 47.6%	1,258 48.0%
<b>Male</b>	1,171 45.8%	1,133 47.9%	1,295 50.0%	1,383 52.4%	1,361 52.0%
<b>Total</b>	2,554 100.0%	2,364 100.0%	2,592 100.0%	2,640 100.0%	2,619 100.0%

## UTSA New Transfer Students by Gender

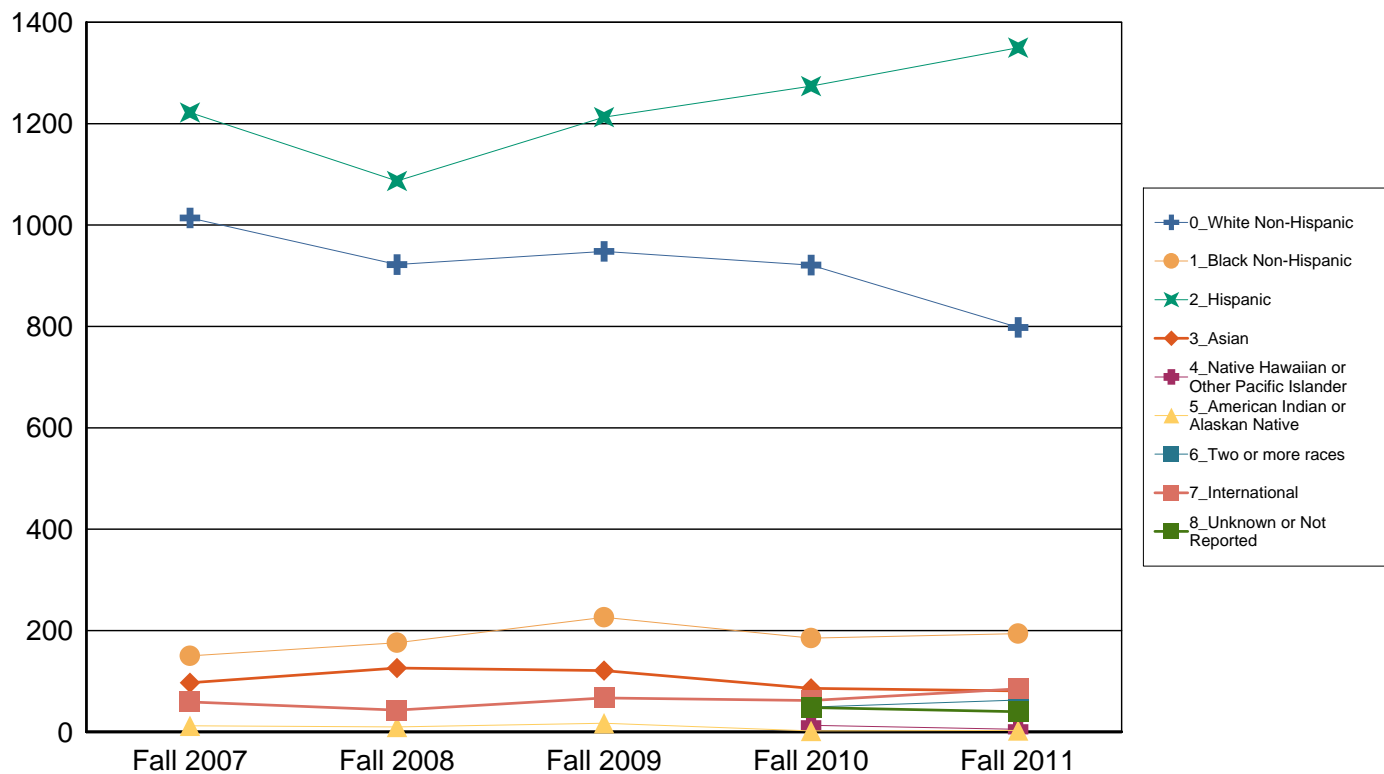


## UTSA New Transfer Students by Ethnicity

	Fall 2007	Fall 2008	Fall 2009	Fall 2010	Fall 2011
<b>White Non-Hispanic</b>	1,014 39.7%	922 39.0%	948 36.6%	921 34.9%	798 30.5%
<b>Black Non-Hispanic</b>	150 5.9%	176 7.4%	226 8.7%	185 7.0%	194 7.4%
<b>Hispanic</b>	1,222 47.8%	1,087 46.0%	1,213 46.8%	1,274 48.3%	1,350 51.5%
<b>Asian</b>	97 3.8%	126 5.3%	121 4.7%	86 3.3%	81 3.1%
<b>Native Hawaiian or Other Pacific Islander</b>	0 0.0%	0 0.0%	0 0.0%	13 0.5%	5 0.2%
<b>American Indian or Alaskan Native</b>	12 0.5%	10 0.4%	17 0.7%	2 0.1%	3 0.1%
<b>Two or more races</b>	0 0.0%	0 0.0%	0 0.0%	49 1.9%	63 2.4%
<b>International</b>	59 2.3%	43 1.8%	67 2.6%	62 2.3%	85 3.2%
<b>Unknown or Not Reported</b>	0 0.0%	0 0.0%	0 0.0%	48 1.8%	40 1.5%
<b>Total</b>	2,554 100.0%	2,364 100.0%	2,592 100.0%	2,640 100.0%	2,619 100.0%

For details on new Race/Ethnicity categories please see page one of this document

## UTSA Transfer Students by Ethnicity

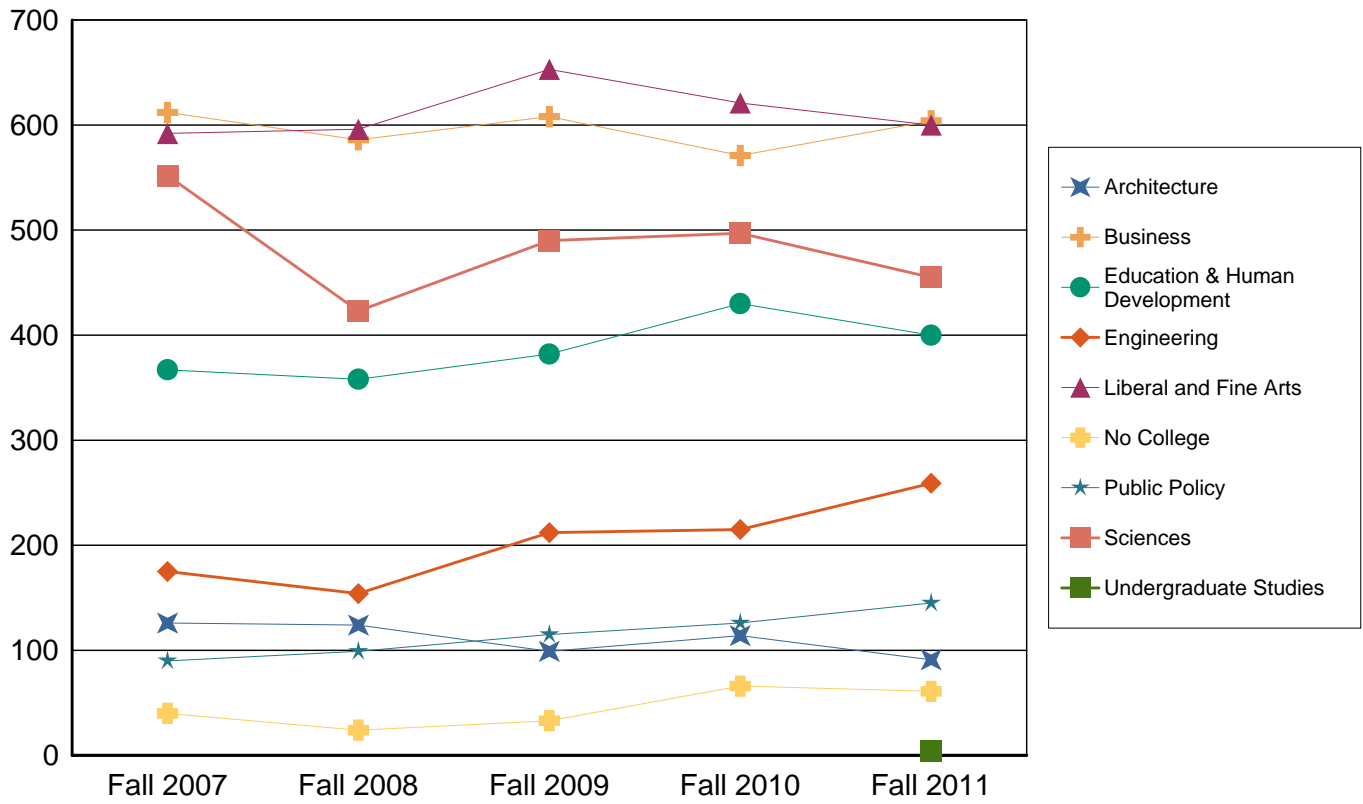




## UTSA Transfer Students by College

	Fall 2007	Fall 2008	Fall 2009	Fall 2010	Fall 2011
<b>Architecture</b>	126 4.9%	124 5.2%	99 3.8%	114 4.3%	91 3.5%
<b>Business</b>	612 24.0%	586 24.8%	608 23.5%	571 21.6%	604 23.1%
<b>Education &amp; Human Development</b>	367 14.4%	358 15.1%	382 14.7%	430 16.3%	400 15.3%
<b>Engineering</b>	175 6.9%	154 6.5%	212 8.2%	215 8.1%	259 9.9%
<b>Liberal and Fine Arts</b>	592 23.2%	596 25.2%	653 25.2%	621 23.5%	600 22.9%
<b>No College</b>	40 1.6%	24 1.0%	33 1.3%	66 2.5%	61 2.3%
<b>Public Policy</b>	90 3.5%	99 4.2%	115 4.4%	126 4.8%	145 5.5%
<b>Sciences</b>	552 21.6%	423 17.9%	490 18.9%	497 18.8%	455 17.4%
<b>Undergraduate Studies</b>	0 0.0%	0 0.0%	0 0.0%	0 0.0%	4 0.2%
<b>Total</b>	2,554 100.0%	2,364 100.0%	2,592 100.0%	2,640 100.0%	2,619 100.0%

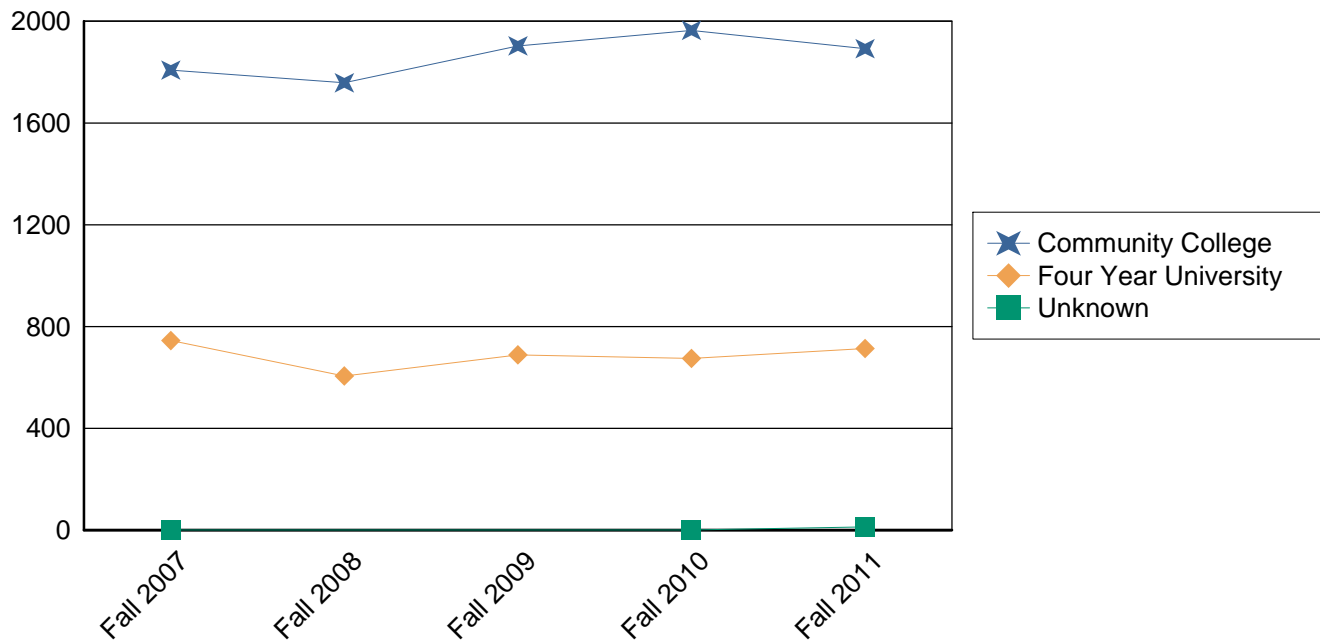
# UTSA Transfer Students by College



## UTSA New Transfer Students by College Type

	Fall 2007	Fall 2008	Fall 2009	Fall 2010	Fall 2011
<b>Unknown</b>	1 0.0%	0 0.0%	0 0.0%	1 0.0%	13 0.5%
<b>Community College</b>	1,808 70.8%	1,758 74.4%	1,903 73.4%	1,964 74.4%	1,892 72.2%
<b>Four Year University</b>	745 29.2%	606 25.6%	689 26.6%	675 25.6%	714 27.3%
<b>Total</b>	2,554 100.0%	2,364 100.0%	2,592 100.0%	2,640 100.0%	2,619 100.0%

## New Transfer Students By College Type



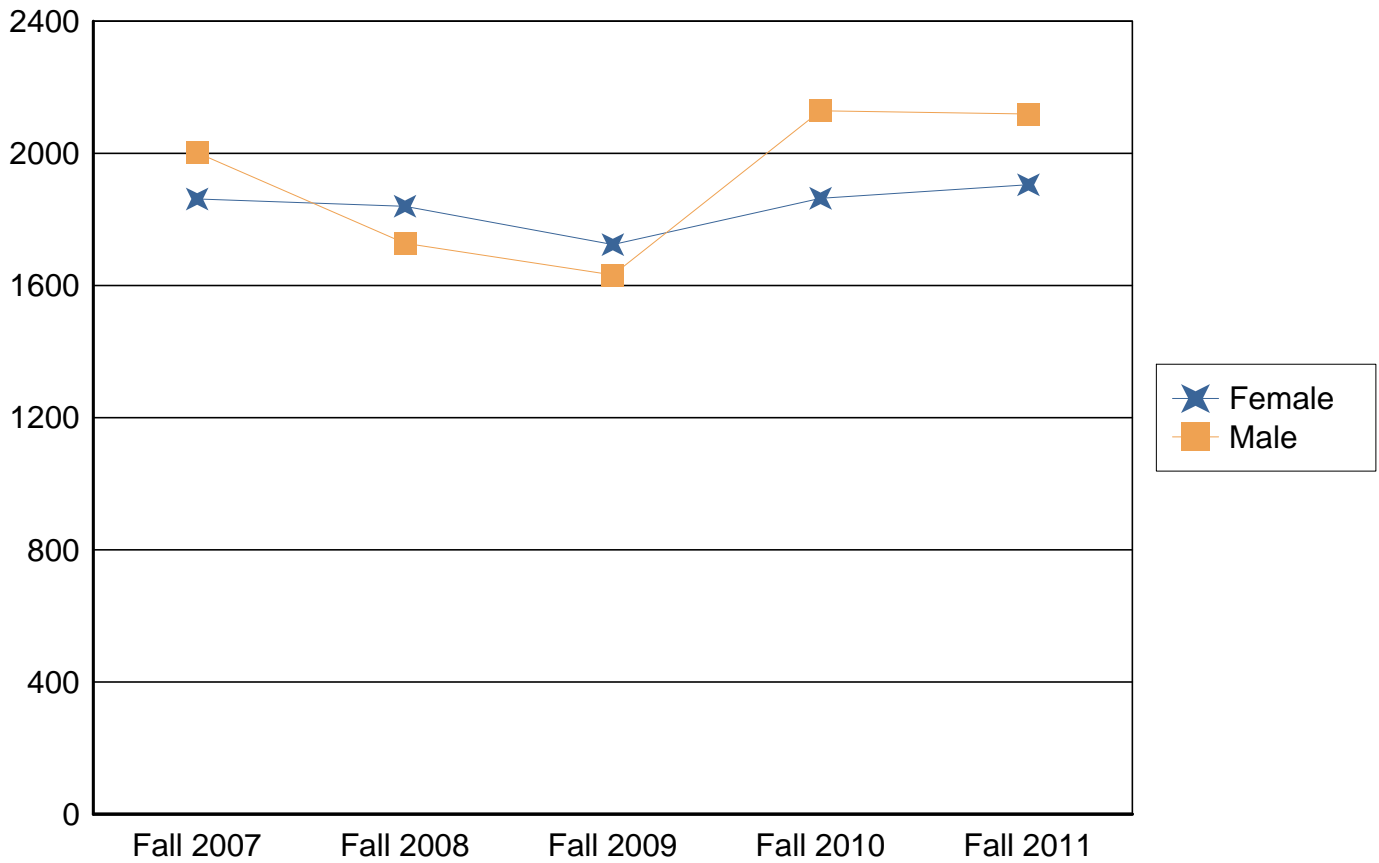
### **UTSA First Time Full Time Cohort Information**

This section includes only students who are seeking a degree from UTSA, this excludes the students who are part of the Coordinated Admissions Program with the University of Texas at Austin and other students who do not plan to get a degree from UTSA. In the past students who were seeking a Clinical Laboratory Sciences degree had been excluded, however since they can also obtain the degree from UTSA they are now included in this section. For more information on this topic please contact the Office of Institutional Research at (210) 458-4706.

**First Time Full Time Undergraduate Cohort by Gender (students seeking degrees at UTSA)**

	Fall 2007	Fall 2008	Fall 2009	Fall 2010	Fall 2011
<b>Female</b>	1,862 48.2%	1,840 51.6%	1,724 51.4%	1,864 46.7%	1,905 47.3%
<b>Male</b>	2,002 51.8%	1,728 48.4%	1,632 48.6%	2,129 53.3%	2,119 52.7%
<b>Total</b>	3,864 100.0%	3,568 100.0%	3,356 100.0%	3,993 100.0%	4,024 100.0%

## UTSA Degree Seeking Cohort by Gender

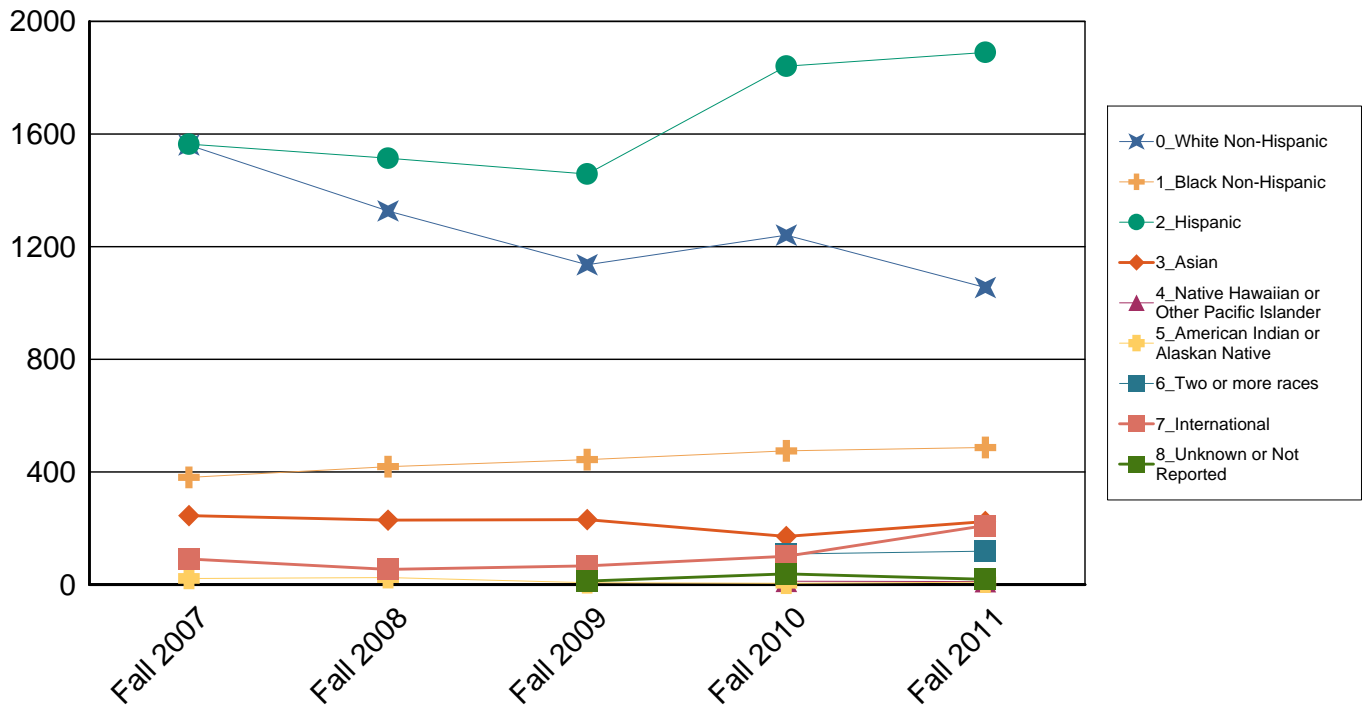


**First Time Full Time Undergraduate Cohort by Ethnicity (students seeking degrees at UTSA)**

	Fall 2007	Fall 2008	Fall 2009	Fall 2010	Fall 2011
<b>White Non-Hispanic</b>	1,561 40.4%	1,327 37.2%	1,136 33.8%	1,241 31.1%	1,055 26.2%
<b>Black Non-Hispanic</b>	381 9.9%	419 11.7%	444 13.2%	475 11.9%	487 12.1%
<b>Hispanic</b>	1,564 40.5%	1,514 42.4%	1,458 43.4%	1,841 46.1%	1,890 47.0%
<b>Asian</b>	245 6.3%	229 6.4%	231 6.9%	171 4.3%	224 5.6%
<b>Native Hawaiian or Other Pacific Islander</b>	0 0.0%	0 0.0%	0 0.0%	12 0.3%	11 0.3%
<b>American Indian or Alaskan Native</b>	22 0.6%	25 0.7%	7 0.2%	5 0.1%	9 0.2%
<b>Two or more races</b>	0 0.0%	0 0.0%	0 0.0%	109 2.7%	119 3.0%
<b>International</b>	91 2.4%	54 1.5%	67 2.0%	101 2.5%	210 5.2%
<b>Unknown or Not Reported</b>	0 0.0%	0 0.0%	13 0.4%	38 1.0%	19 0.5%
<b>Total</b>	3,864 100.0%	3,568 100.0%	3,356 100.0%	3,993 100.0%	4,024 100.0%

For details on new Race/Ethnicity categories please see page one of this document

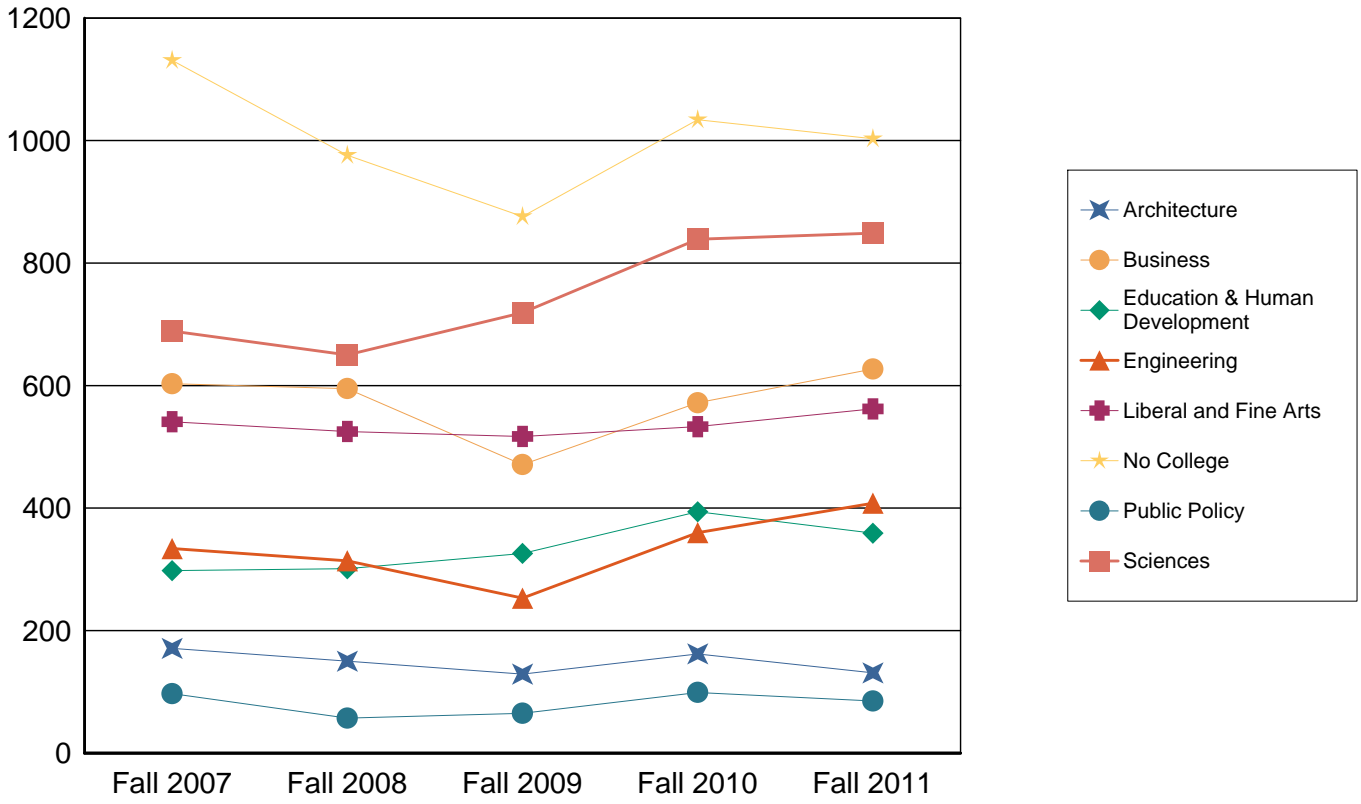
## UTSA Degree Seeking Cohort by Ethnicity



**First Time Full Time Undergraduate Cohort by College (students seeking degrees at UTSA)**

	<b>Fall 2007</b>	<b>Fall 2008</b>	<b>Fall 2009</b>	<b>Fall 2010</b>	<b>Fall 2011</b>
<b>Architecture</b>	171 4.4%	150 4.2%	129 3.8%	162 4.1%	131 3.3%
<b>Business</b>	603 15.6%	595 16.7%	471 14.0%	572 14.3%	627 15.6%
<b>Education &amp; Human Development</b>	298 7.7%	301 8.4%	326 9.7%	394 9.9%	359 8.9%
<b>Engineering</b>	334 8.6%	314 8.8%	253 7.5%	360 9.0%	408 10.1%
<b>Liberal and Fine Arts</b>	541 14.0%	525 14.7%	517 15.4%	533 13.3%	562 14.0%
<b>No College</b>	1,131 29.3%	976 27.4%	876 26.1%	1,034 25.9%	1,003 24.9%
<b>Public Policy</b>	97 2.5%	57 1.6%	65 1.9%	99 2.5%	85 2.1%
<b>Sciences</b>	689 17.8%	650 18.2%	719 21.4%	839 21.0%	849 21.1%
<b>Total</b>	3,864 100.0%	3,568 100.0%	3,356 100.0%	3,993 100.0%	4,024 100.0%

# UTSA Degree Seeking Cohort by College





## SAT and ACT Scores

### First Time Full Time Undergraduate Cohort Average SAT Total

	Fall 2007	Fall 2008	Fall 2009	Fall 2010	Fall 2011
<b>Provisional Admit</b>	818	838	868	880	917
<b>Regular Admit</b>	1,013	1,020	1,018	1,024	1,031
<b>Total</b>	988	996	996	1,008	1,020

### First Time Full Time Undergraduate Cohort 25th and 75th Percentile SAT Total

	Fall 2007	Fall 2008	Fall 2009	Fall 2010	Fall 2011
<b>Provisional Admit</b>	770 870	790 880	820 910	840 910	880 950
<b>Regular Admit</b>	930 1,090	940 1,100	940 1,090	950 1,100	950 1,110
<b>Total</b>	890 1,070	900 1,080	910 1,080	920 1,090	940 1,100

### First Time Full Time Undergraduate Cohort Average SAT Verbal

	Fall 2007	Fall 2008	Fall 2009	Fall 2010	Fall 2011
<b>Provisional Admit</b>	405	414	427	428	447
<b>Regular Admit</b>	499	500	497	499	502
<b>Total</b>	486	489	487	491	496

### First Time Full Time Undergraduate Cohort 25th and 75th Percentile SAT Verbal

	Fall 2007	Fall 2008	Fall 2009	Fall 2010	Fall 2011
<b>Provisional Admit</b>	380 440	380 450	400 460	400 460	410 480
<b>Regular Admit</b>	450 540	450 550	450 540	450 550	450 550
<b>Total</b>	430 530	440 540	440 530	440 540	450 540

**First Time Full Time Undergraduate Cohort Average SAT Math**

	Fall 2007	Fall 2008	Fall 2009	Fall 2010	Fall 2011
<b>Provisional Admit</b>	413	424	441	451	470
<b>Regular Admit</b>	515	520	520	525	529
<b>Total</b>	501	507	509	517	523

**First Time Full Time Undergraduate Cohort 25th and 75th Percentile SAT Math**

	Fall 2007	Fall 2008	Fall 2009	Fall 2010	Fall 2011
<b>Provisional Admit</b>	380 450	390 460	410 480	420 480	440 500
<b>Regular Admit</b>	460 560	470 570	470 570	470 570	480 580
<b>Total</b>	450 550	450 560	460 560	460 570	470 570

**First Time Full Time Undergraduate Cohort Average ACT Composite**

	Fall 2007	Fall 2008	Fall 2009	Fall 2010	Fall 2011
<b>Provisional Admit</b>	16	17	17	18	18
<b>Regular Admit</b>	21	21	21	21	22
<b>Total</b>	20	20	21	21	21

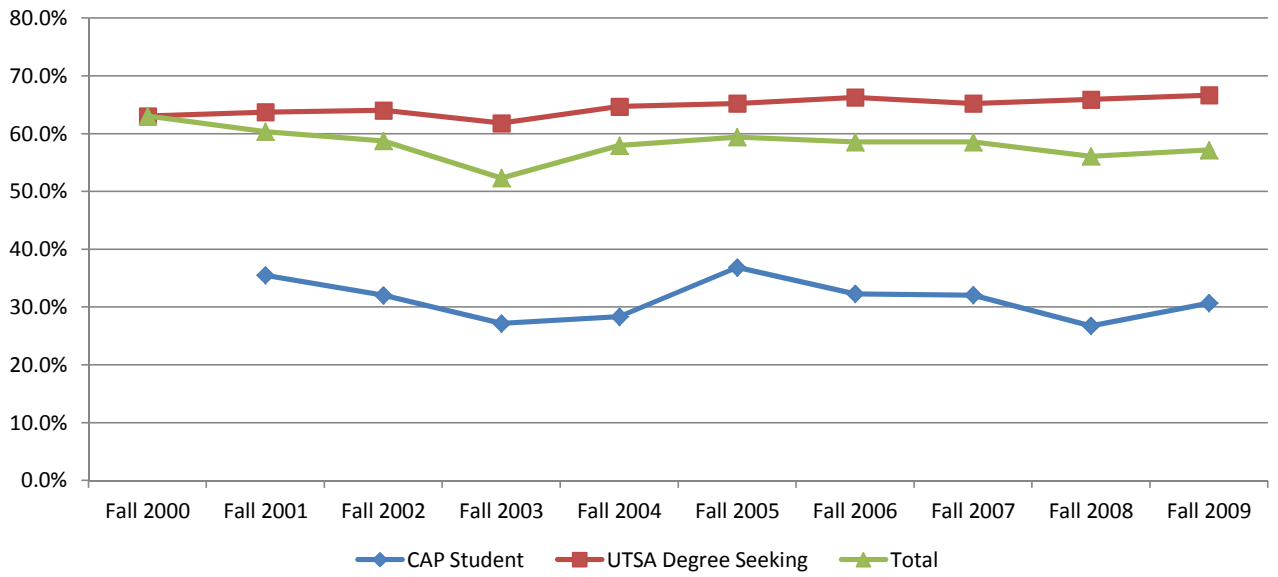
**First Time Full Time Undergraduate Cohort 25th and 75th Percentile ACT Composite**

	Fall 2007	Fall 2008	Fall 2009	Fall 2010	Fall 2011
<b>Provisional Admit</b>	15 18	15 18	16 18	17 19	17 19
<b>Regular Admit</b>	19 23	19 23	19 23	19 23	20 24
<b>Total</b>	18 22	18 22	18 23	19 23	19 24

## Retention and Graduation for First Time Full Time Cohort

All Students			Percent Retained			Percent Graduated		
Cohort	Student Type	# in Cohort	One Year	Two Years	Three Years	Four Years	Five Years	Six Years
Fall 2000	UTSA Degree Seeking	1730	63%	48%	42%	7%	21%	28%
	Total	1730	63%	48%	42%	7%	21%	28%
Fall 2001	UTSA Degree Seeking	1683	64%	48%	44%	8%	23%	31%
	CAP Student	228	36%	29%	25%	4%	14%	18%
	Total	1911	60%	46%	42%	7%	22%	30%
Fall 2002	UTSA Degree Seeking	2507	64%	50%	43%	9%	22%	31%
	CAP Student	496	32%	25%	23%	4%	14%	17%
	Total	3003	59%	46%	39%	8%	21%	28%
Fall 2003	UTSA Degree Seeking	2998	62%	49%	43%	9%	22%	30%
	CAP Student	1133	27%	23%	20%	5%	10%	14%
	Total	4131	52%	42%	37%	8%	19%	25%
Fall 2004	UTSA Degree Seeking	3456	65%	49%	41%	8%	21%	29%
	CAP Student	790	28%	23%	20%	6%	13%	16%
	Total	4246	58%	44%	37%	7%	20%	26%
Fall 2005	UTSA Degree Seeking	3475	65%	47%	40%	8%	22%	29%
	CAP Student	892	37%	29%	26%	7%	15%	19%
	Total	4367	59%	43%	37%	8%	21%	27%
Fall 2006	UTSA Degree Seeking	3628	66%	47%	40%	10%	24%	
	CAP Student	1065	32%	26%	23%	7%	13%	
	Total	4693	59%	42%	36%	9%	21%	
Fall 2007	UTSA Degree Seeking	3864	65%	48%	42%	10%		
	CAP Student	972	32%	27%	24%	6%		
	Total	4836	59%	44%	39%	10%		
Fall 2008	UTSA Degree Seeking	3568	66%	51%	45%			
	CAP Student	1195	27%	22%	20%			
	Total	4763	56%	44%	39%			
Fall 2009	UTSA Degree Seeking	3356	67%	52%				
	CAP Student	1205	31%	24%				
	Total	4561	57%	45%				
Fall 2010	UTSA Degree Seeking	3993	69%					
	CAP Student	823	31%					
	Total	4816	62%					

## One Year Retention Rate by Student Type



## Retention and Graduation for First Time Full Time Cohort by Gender

Female			Percent Retained			Percent Graduated		
Cohort	Student Type	# in Cohort	One Year	Two Years	Three Years	Four Years	Five Years	Six Years
Fall 2000	UTSA Degree Seeking	895	66%	47%	44%	8%	23%	31%
	Total	895	66%	47%	44%	8%	23%	31%
Fall 2001	UTSA Degree Seeking	873	63%	47%	44%	8%	25%	32%
	CAP Student	104	33%	28%	25%	4%	16%	21%
	Total	977	59%	45%	42%	8%	24%	31%
Fall 2002	UTSA Degree Seeking	1384	65%	51%	44%	10%	26%	34%
	CAP Student	237	32%	24%	21%	5%	14%	17%
	Total	1621	60%	47%	41%	10%	24%	31%
Fall 2003	UTSA Degree Seeking	1542	64%	51%	45%	11%	25%	33%
	CAP Student	534	29%	24%	22%	6%	12%	16%
	Total	2076	55%	44%	39%	10%	22%	29%
Fall 2004	UTSA Degree Seeking	1765	66%	50%	42%	10%	26%	33%
	CAP Student	376	29%	23%	21%	7%	15%	17%
	Total	2141	59%	45%	38%	10%	24%	30%
Fall 2005	UTSA Degree Seeking	1782	65%	46%	40%	10%	25%	31%
	CAP Student	459	35%	29%	25%	9%	17%	20%
	Total	2241	59%	43%	37%	10%	23%	29%
Fall 2006	UTSA Degree Seeking	1875	67%	47%	41%	12%	27%	
	CAP Student	519	33%	24%	22%	8%	16%	
	Total	2394	60%	42%	37%	11%	25%	
Fall 2007	UTSA Degree Seeking	1862	67%	50%	44%	13%		
	CAP Student	448	33%	28%	25%	8%		
	Total	2310	60%	45%	41%	12%		
Fall 2008	UTSA Degree Seeking	1840	67%	52%	45%			
	CAP Student	594	25%	21%	18%			
	Total	2434	57%	44%	39%			
Fall 2009	UTSA Degree Seeking	1724	68%	55%				
	CAP Student	557	31%	25%				
	Total	2281	59%	47%				
Fall 2010	UTSA Degree Seeking	1864	69%					
	CAP Student	380	34%					
	Total	2244	63%					

## Retention and Graduation for First Time Full Time Cohort by Gender

Male			Percent Retained			Percent Graduated		
Cohort	Student Type	# in Cohort	One Year	Two Years	Three Years	Four Years	Five Years	Six Years
Fall 2000	UTSA Degree Seeking	835	60%	48%	40%	6%	19%	25%
	Total	835	60%	48%	40%	6%	19%	25%
Fall 2001	UTSA Degree Seeking	810	65%	50%	45%	7%	21%	30%
	CAP Student	124	38%	31%	24%	4%	12%	15%
	Total	934	61%	47%	43%	6%	19%	28%
Fall 2002	UTSA Degree Seeking	1123	63%	49%	41%	6%	18%	27%
	CAP Student	259	32%	25%	24%	2%	14%	17%
	Total	1382	57%	44%	38%	5%	17%	25%
Fall 2003	UTSA Degree Seeking	1456	60%	46%	42%	6%	19%	26%
	CAP Student	599	26%	22%	18%	3%	9%	12%
	Total	2055	50%	39%	35%	5%	16%	22%
Fall 2004	UTSA Degree Seeking	1691	64%	47%	40%	5%	17%	25%
	CAP Student	414	28%	23%	19%	4%	10%	14%
	Total	2105	57%	42%	36%	5%	16%	23%
Fall 2005	UTSA Degree Seeking	1693	66%	47%	41%	6%	19%	27%
	CAP Student	433	39%	29%	27%	5%	13%	18%
	Total	2126	60%	43%	38%	6%	18%	25%
Fall 2006	UTSA Degree Seeking	1753	65%	46%	39%	7%	20%	
	CAP Student	546	32%	27%	24%	5%	11%	
	Total	2299	57%	42%	36%	7%	18%	
Fall 2007	UTSA Degree Seeking	2002	64%	47%	41%	8%		
	CAP Student	524	31%	26%	22%	5%		
	Total	2526	57%	42%	37%	7%		
Fall 2008	UTSA Degree Seeking	1728	65%	51%	45%			
	CAP Student	601	28%	23%	21%			
	Total	2329	55%	44%	39%			
Fall 2009	UTSA Degree Seeking	1632	65%	49%				
	CAP Student	648	30%	23%				
	Total	2280	55%	42%				
Fall 2010	UTSA Degree Seeking	2129	68%					
	CAP Student	443	29%					
	Total	2572	61%					

## Retention and Graduation for First Time Full Time Cohort by Ethnicity

White			Percent Retained			Percent Graduated		
Cohort	Student Type	# in Cohort	One Year	Two Years	Three Years	Four Years	Five Years	Six Years
Fall 2000	UTSA Degree Seeking	712	63%	46%	40%	8%	22%	29%
	Total	712	63%	46%	40%	8%	22%	29%
Fall 2001	UTSA Degree Seeking	652	60%	44%	41%	9%	23%	29%
	CAP Student	99	31%	27%	22%	4%	11%	13%
	Total	751	56%	41%	38%	8%	21%	27%
Fall 2002	UTSA Degree Seeking	928	62%	46%	38%	10%	22%	29%
	CAP Student	225	23%	17%	15%	3%	11%	13%
	Total	1153	54%	40%	34%	9%	20%	26%
Fall 2003	UTSA Degree Seeking	1153	58%	43%	39%	8%	21%	28%
	CAP Student	561	21%	17%	13%	4%	8%	10%
	Total	1714	46%	35%	31%	7%	17%	22%
Fall 2004	UTSA Degree Seeking	1375	61%	46%	38%	9%	22%	29%
	CAP Student	371	22%	19%	15%	6%	11%	14%
	Total	1746	53%	40%	34%	8%	20%	26%
Fall 2005	UTSA Degree Seeking	1371	63%	43%	38%	8%	21%	28%
	CAP Student	368	27%	18%	15%	4%	8%	11%
	Total	1739	56%	38%	33%	7%	19%	25%
Fall 2006	UTSA Degree Seeking	1538	63%	43%	36%	9%	22%	
	CAP Student	518	27%	22%	19%	5%	12%	
	Total	2056	54%	38%	31%	8%	19%	
Fall 2007	UTSA Degree Seeking	1561	62%	45%	40%	10%		
	CAP Student	483	24%	19%	17%	6%		
	Total	2044	53%	39%	34%	9%		
Fall 2008	UTSA Degree Seeking	1327	63%	49%	43%			
	CAP Student	559	23%	17%	16%			
	Total	1886	51%	40%	35%			
Fall 2009	UTSA Degree Seeking	1136	62%	47%				
	CAP Student	549	24%	18%				
	Total	1685	50%	38%				
Fall 2010	UTSA Degree Seeking	1241	65%					
	CAP Student	323	26%					
	Total	1564	57%					

## Retention and Graduation for First Time Full Time Cohort by Ethnicity

<b>Black</b>			<b>Percent Retained</b>			<b>Percent Graduated</b>		
<b>Cohort</b>	<b>Student Type</b>	<b># in Cohort</b>	<b>One Year</b>	<b>Two Years</b>	<b>Three Years</b>	<b>Four Years</b>	<b>Five Years</b>	<b>Six Years</b>
Fall 2000	UTSA Degree Seeking	120	60%	41%	39%	8%	20%	23%
	Total	120	60%	41%	39%	8%	20%	23%
Fall 2001	UTSA Degree Seeking	113	65%	45%	39%	12%	21%	27%
	CAP Student	17	59%	53%	47%	6%	29%	35%
	Total	130	65%	46%	40%	11%	22%	28%
Fall 2002	UTSA Degree Seeking	148	71%	59%	49%	5%	21%	32%
	CAP Student	27	56%	48%	41%	0%	7%	19%
	Total	175	69%	57%	47%	4%	19%	30%
Fall 2003	UTSA Degree Seeking	193	63%	51%	40%	9%	21%	25%
	CAP Student	50	32%	32%	30%	8%	10%	20%
	Total	243	56%	47%	38%	9%	19%	24%
Fall 2004	UTSA Degree Seeking	287	73%	52%	45%	7%	22%	31%
	CAP Student	42	55%	48%	45%	7%	26%	31%
	Total	329	71%	51%	45%	7%	22%	31%
Fall 2005	UTSA Degree Seeking	310	65%	47%	38%	7%	18%	26%
	CAP Student	50	66%	56%	46%	16%	28%	36%
	Total	360	66%	48%	39%	8%	19%	27%
Fall 2006	UTSA Degree Seeking	368	75%	54%	47%	11%	28%	
	CAP Student	65	63%	43%	45%	11%	26%	
	Total	433	73%	52%	46%	11%	27%	
Fall 2007	UTSA Degree Seeking	381	71%	57%	50%	10%		
	CAP Student	62	48%	45%	39%	11%		
	Total	443	67%	56%	49%	10%		
Fall 2008	UTSA Degree Seeking	419	73%	57%	49%			
	CAP Student	71	59%	55%	49%			
	Total	490	71%	57%	49%			
Fall 2009	UTSA Degree Seeking	444	76%	61%				
	CAP Student	87	51%	47%				
	Total	531	72%	59%				
Fall 2010	UTSA Degree Seeking	475	78%					
	CAP Student	36	50%					
	Total	511	76%					



## Retention and Graduation for First Time Full Time Cohort by Ethnicity

Hispanic			Percent Retained			Percent Graduated		
Cohort	Student Type	# in Cohort	One Year	Two Years	Three Years	Four Years	Five Years	Six Years
Fall 2000	UTSA Degree Seeking	822	64%	50%	44%	6%	20%	28%
	Total	822	64%	50%	44%	6%	20%	28%
Fall 2001	UTSA Degree Seeking	803	65%	51%	47%	5%	22%	32%
	CAP Student	70	37%	27%	29%	3%	14%	20%
	Total	873	63%	49%	46%	5%	21%	31%
Fall 2002	UTSA Degree Seeking	1248	63%	49%	44%	7%	21%	30%
	CAP Student	146	42%	34%	32%	5%	20%	23%
	Total	1394	61%	47%	42%	7%	21%	29%
Fall 2003	UTSA Degree Seeking	1435	63%	51%	45%	8%	22%	30%
	CAP Student	313	39%	35%	32%	7%	16%	22%
	Total	1748	59%	48%	43%	8%	21%	28%
Fall 2004	UTSA Degree Seeking	1546	66%	50%	41%	7%	19%	27%
	CAP Student	221	39%	30%	28%	6%	15%	20%
	Total	1767	62%	47%	39%	7%	19%	26%
Fall 2005	UTSA Degree Seeking	1511	66%	49%	42%	8%	22%	30%
	CAP Student	244	45%	38%	36%	9%	21%	25%
	Total	1755	63%	48%	41%	8%	22%	29%
Fall 2006	UTSA Degree Seeking	1421	67%	48%	42%	10%	24%	
	CAP Student	217	42%	34%	30%	12%	18%	
	Total	1638	64%	46%	41%	10%	23%	
Fall 2007	UTSA Degree Seeking	1564	65%	47%	42%	10%		
	CAP Student	203	42%	37%	33%	5%		
	Total	1767	63%	46%	41%	10%		
Fall 2008	UTSA Degree Seeking	1514	67%	52%	46%			
	CAP Student	281	35%	28%	25%			
	Total	1795	62%	48%	43%			
Fall 2009	UTSA Degree Seeking	1458	66%	52%				
	CAP Student	283	40%	32%				
	Total	1741	61%	49%				
Fall 2010	UTSA Degree Seeking	1841	67%					
	CAP Student	243	38%					
	Total	2084	64%					

## Retention and Graduation for First Time Full Time Cohort by Ethnicity

Other			Percent Retained			Percent Graduated		
Cohort	Student Type	# in Cohort	One Year	Two Years	Three Years	Four Years	Five Years	Six Years
Fall 2000	UTSA Degree Seeking	76	64%	54%	51%	13%	30%	32%
	Total	76	64%	54%	51%	13%	30%	32%
Fall 2001	UTSA Degree Seeking	115	76%	62%	53%	15%	32%	43%
	CAP Student	42	33%	29%	14%	5%	14%	19%
	Total	157	64%	53%	43%	12%	27%	36%
Fall 2002	UTSA Degree Seeking	183	77%	66%	55%	16%	32%	44%
	CAP Student	98	32%	23%	20%	4%	12%	17%
	Total	281	61%	51%	43%	12%	25%	35%
Fall 2003	UTSA Degree Seeking	217	72%	59%	57%	15%	34%	45%
	CAP Student	209	24%	19%	17%	3%	8%	11%
	Total	426	48%	39%	38%	9%	21%	28%
Fall 2004	UTSA Degree Seeking	248	68%	54%	48%	13%	30%	35%
	CAP Student	156	20%	15%	13%	3%	8%	10%
	Total	404	49%	39%	35%	9%	22%	26%
Fall 2005	UTSA Degree Seeking	283	69%	52%	46%	12%	29%	36%
	CAP Student	230	38%	29%	28%	9%	17%	20%
	Total	513	55%	42%	38%	11%	24%	29%
Fall 2006	UTSA Degree Seeking	301	69%	53%	45%	11%	27%	
	CAP Student	265	26%	22%	17%	5%	9%	
	Total	566	49%	38%	32%	8%	19%	
Fall 2007	UTSA Degree Seeking	358	73%	55%	49%	12%		
	CAP Student	224	36%	29%	25%	7%		
	Total	582	59%	45%	39%	10%		
Fall 2008	UTSA Degree Seeking	308	66%	53%	47%			
	CAP Student	284	18%	17%	14%			
	Total	592	43%	35%	31%			
Fall 2009	UTSA Degree Seeking	318	75%	58%				
	CAP Student	286	29%	22%				
	Total	604	53%	41%				
Fall 2010	UTSA Degree Seeking	436	76%					
	CAP Student	221	28%					
	Total	657	60%					