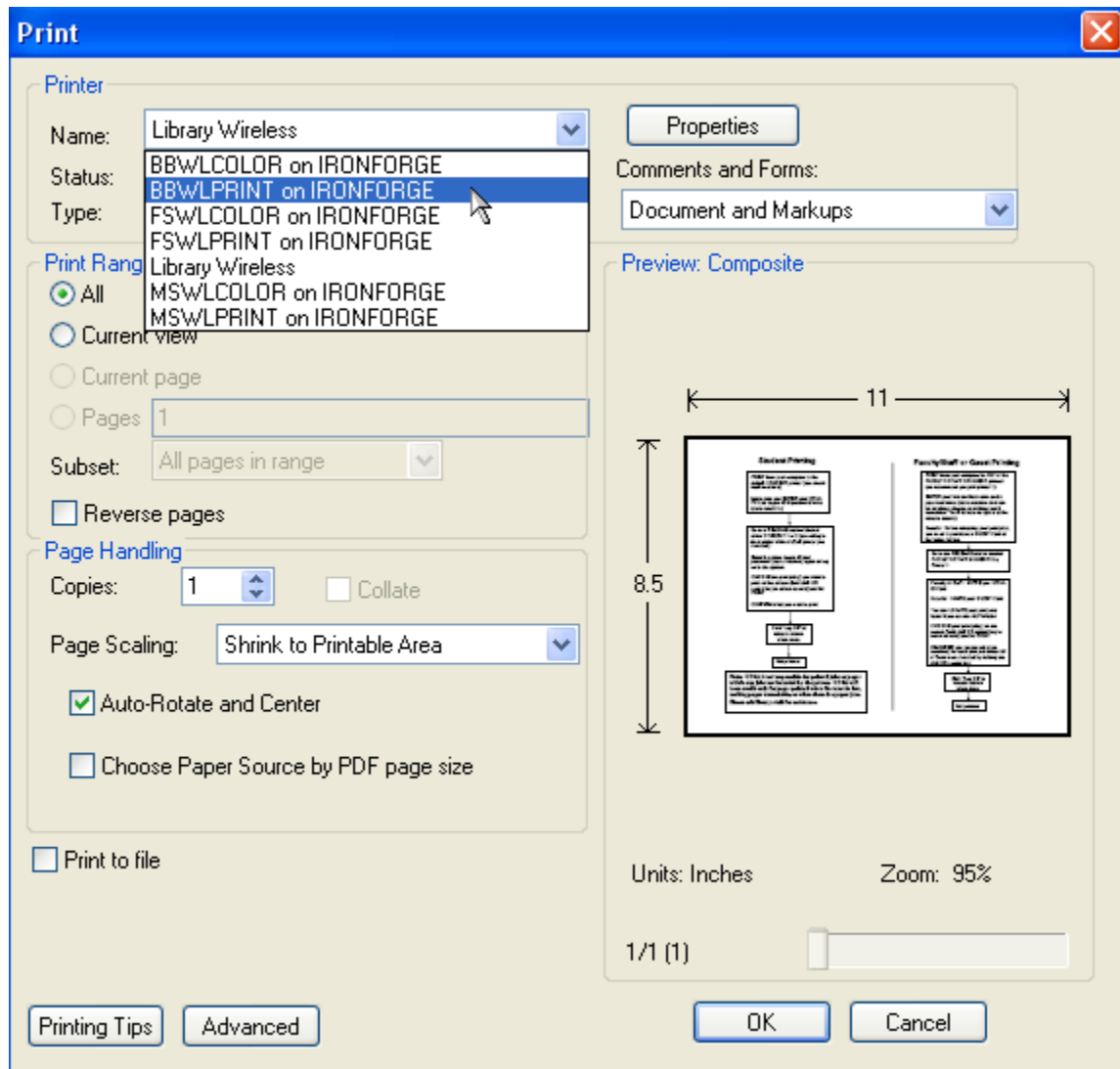


How to use Wireless PrintSmart at the SCS PC Labs

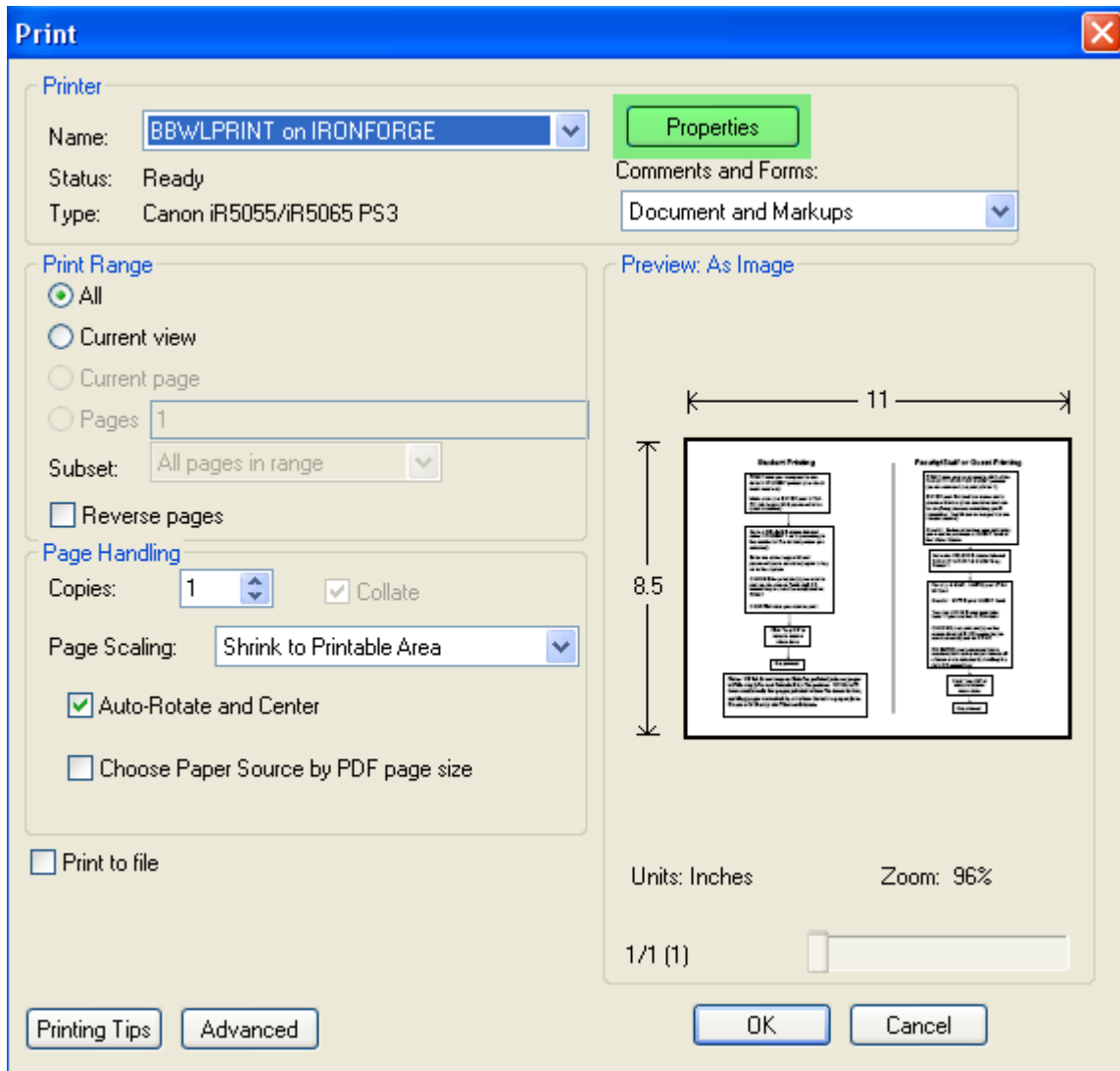


1. The wireless printers above are located in the following UTSA Student Computing Services PC Lab locations (except for **LIBRARY WIRELESS** which is located on the 1604 Library (2nd floor of the JPL building)):

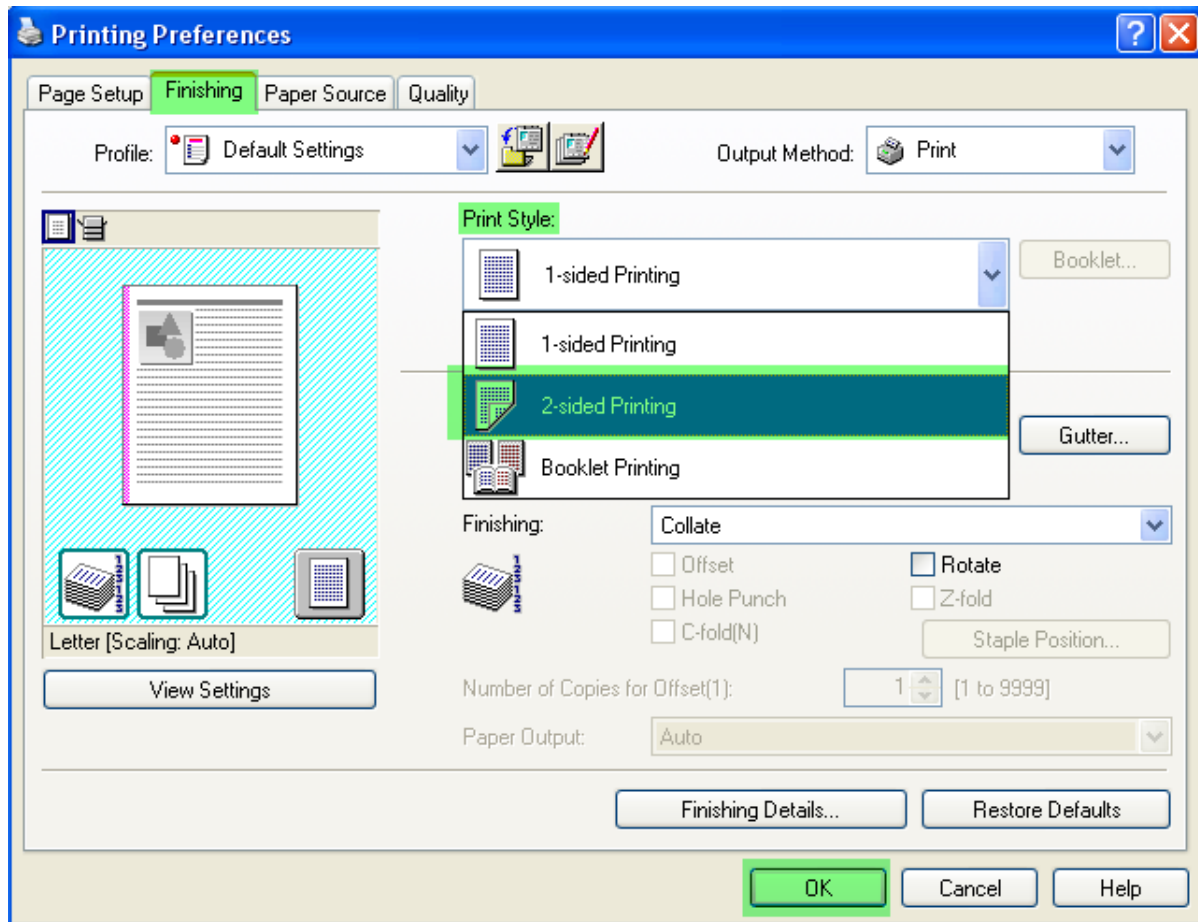
BBWLCOLOR & BBWLPRINT: Business Building (1604)

MSWLCOLOR & MSWLPRINT: Multidisciplinary Building (1604)

FSWLCOLOR & FSWLPRINT: Frio Street Buiding (Downtown)

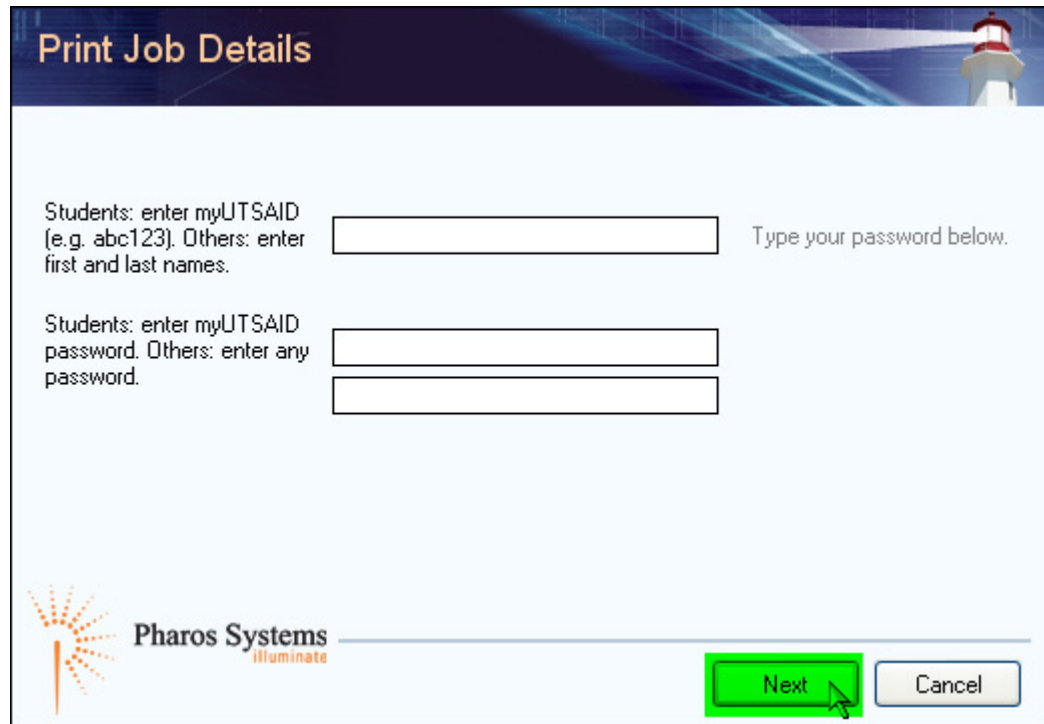


2. If you need to print double-sided (duplex), you need to select the printer you want to print to and click on “Properties” or “Preferences” depending on the program you are working on.



3. Click on the “Finishing” tab, under the “Print Style” you need to click on “2-sided Printing.” Then click “OK.”

4. When you are ready to print, click on “Print” or “OK” depending on the application you are working on.




Print Job Details

Students: enter myUTSAID (e.g. abc123). Others: enter first and last names.

Type your password below.

Students: enter myUTSAID password. Others: enter any password.

 **Pharos Systems**
illuminate

The image shows a software dialog box titled "Print Job Details". It has a dark blue header with a lighthouse icon. The main area is white and contains two sets of input fields. The first set is for "Students" (myUTSAID) and "Others" (first and last names), with a single text box. The second set is for "Students" (password) and "Others" (any password), with two stacked text boxes. At the bottom, there is a "Pharos Systems illuminate" logo and two buttons: "Next" (highlighted in green) and "Cancel".

5. You will get the above pop-up window asking for your credentials. Once you enter them, click on "Next."
6. If you need to release the print jobs you just sent, you need to go to the respective Student Computing Services PC Lab and log on to their wireless release station.