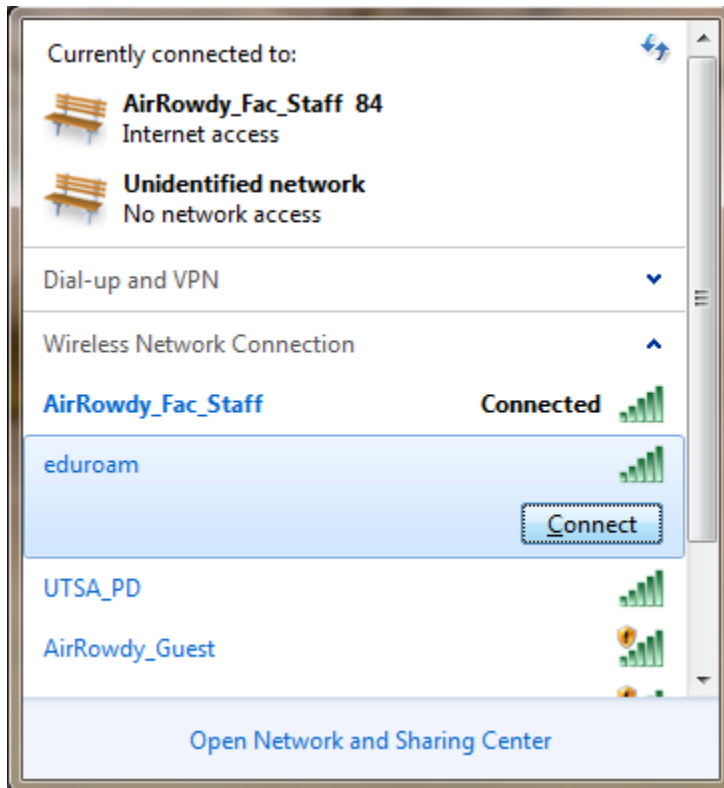


Eduroam

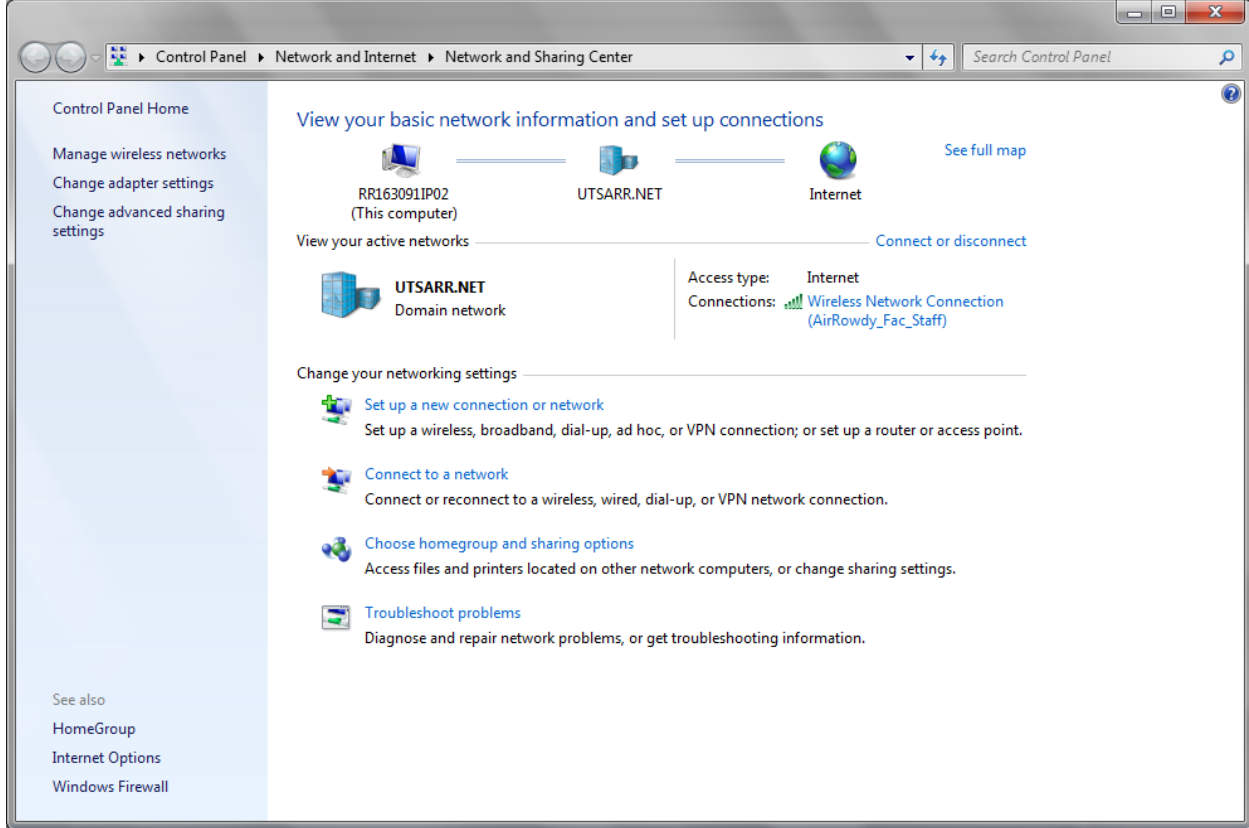
Enabling your laptop for Eduroam

View your list of wireless networks:

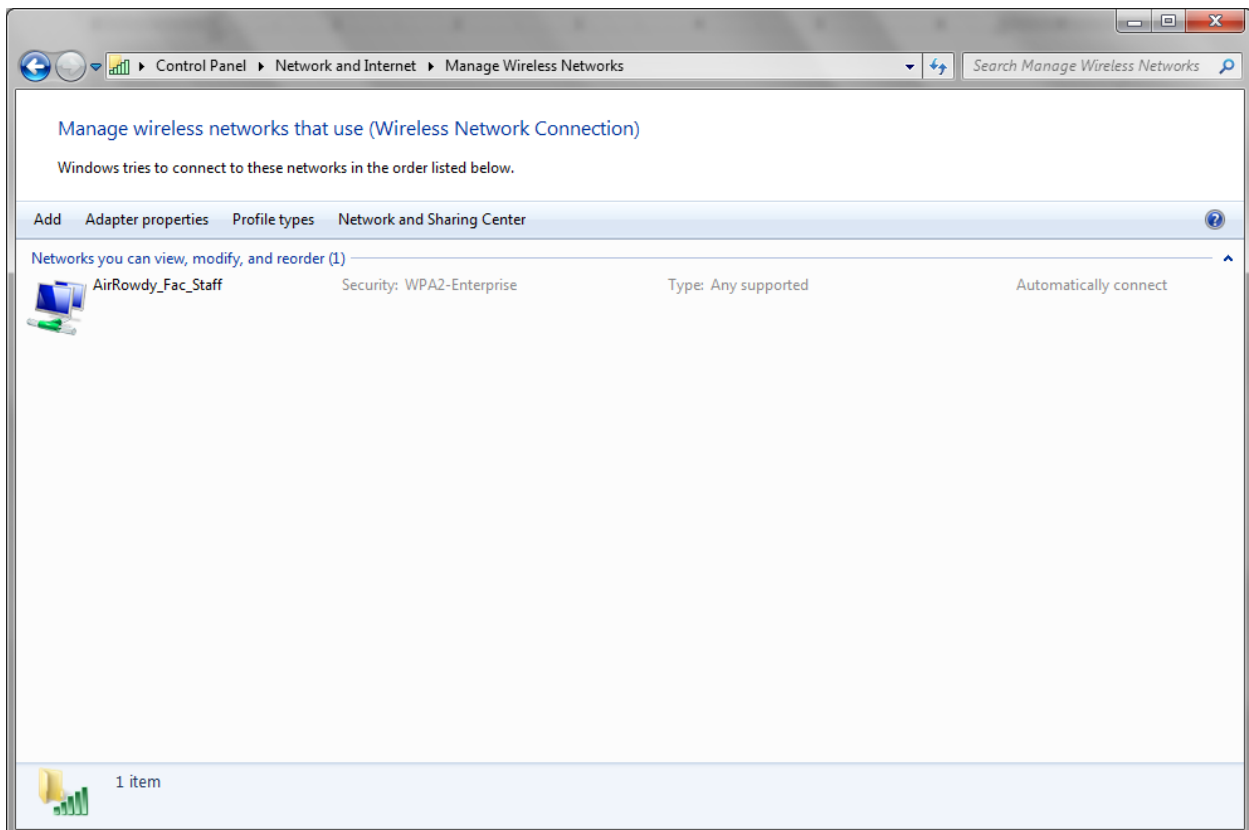
Click on the bars in the lower right of the desktop:



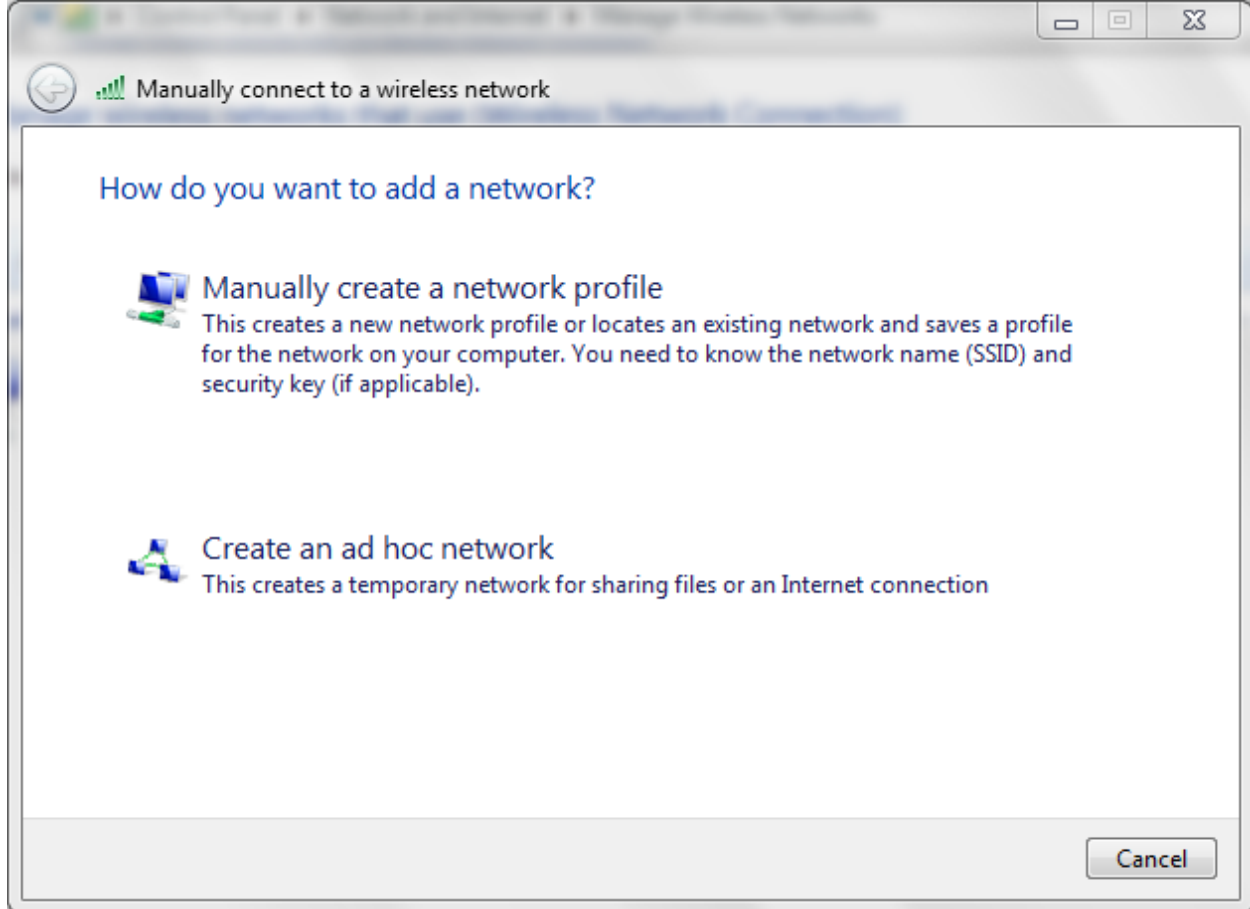
Open "Network and Sharing Center"



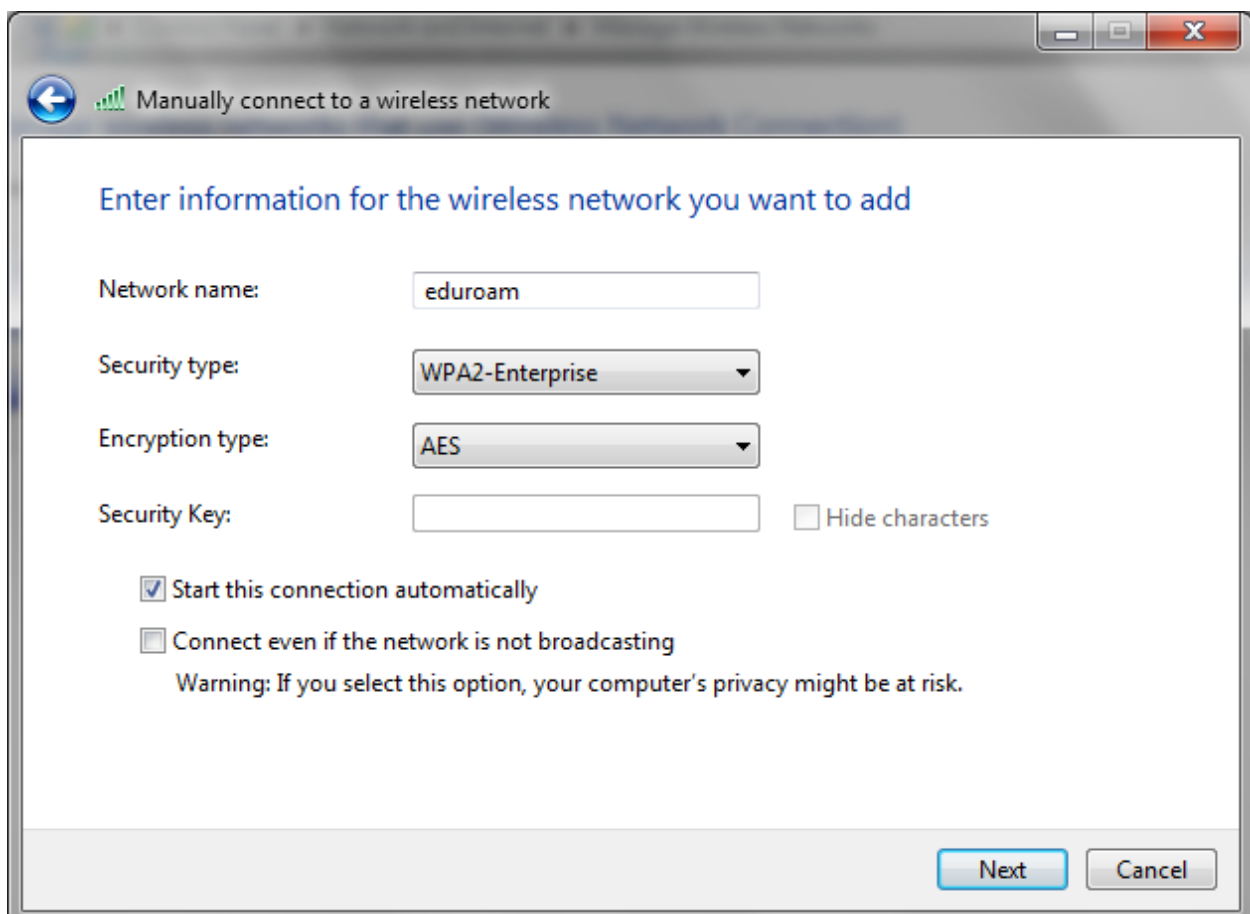
Click on "Manage wireless networks"



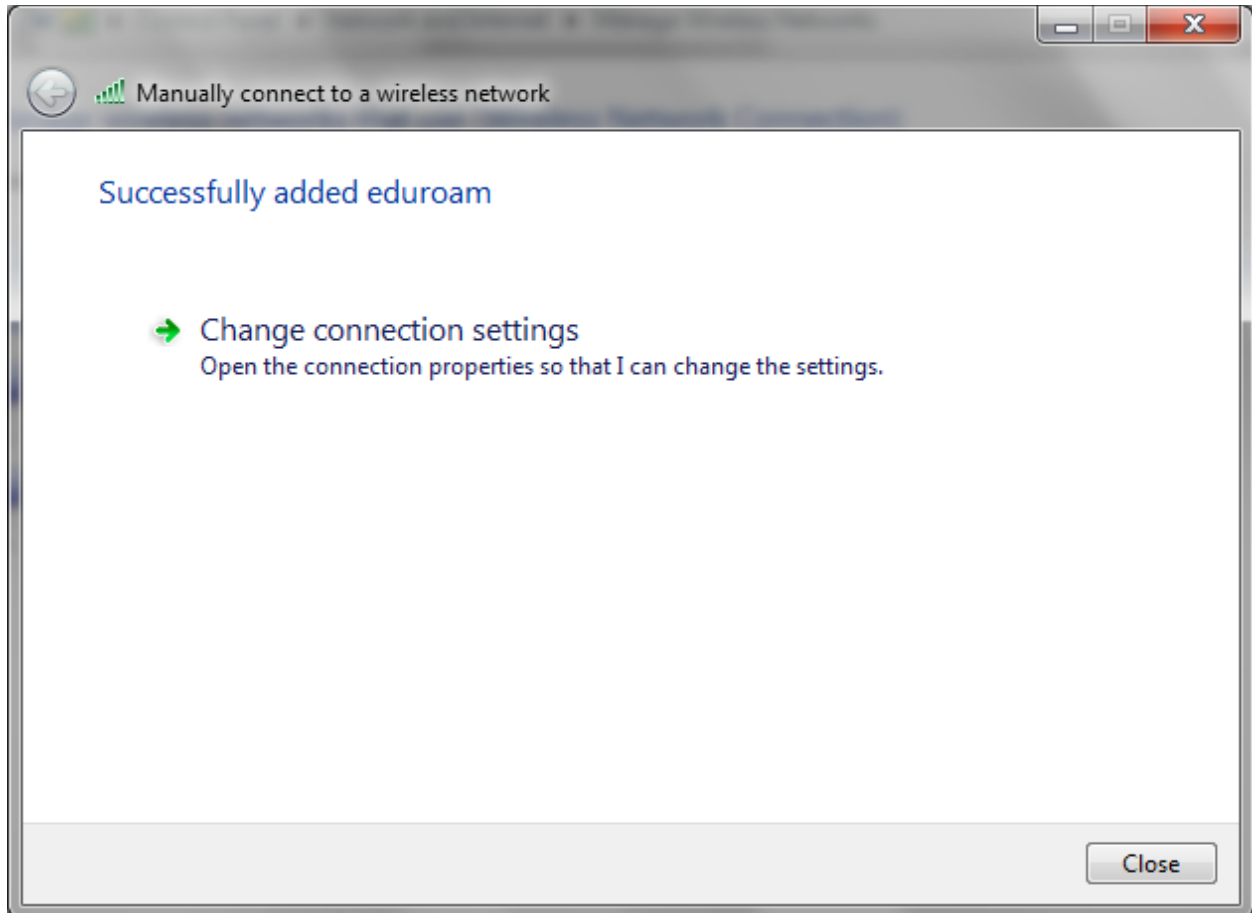
Click on "Add"



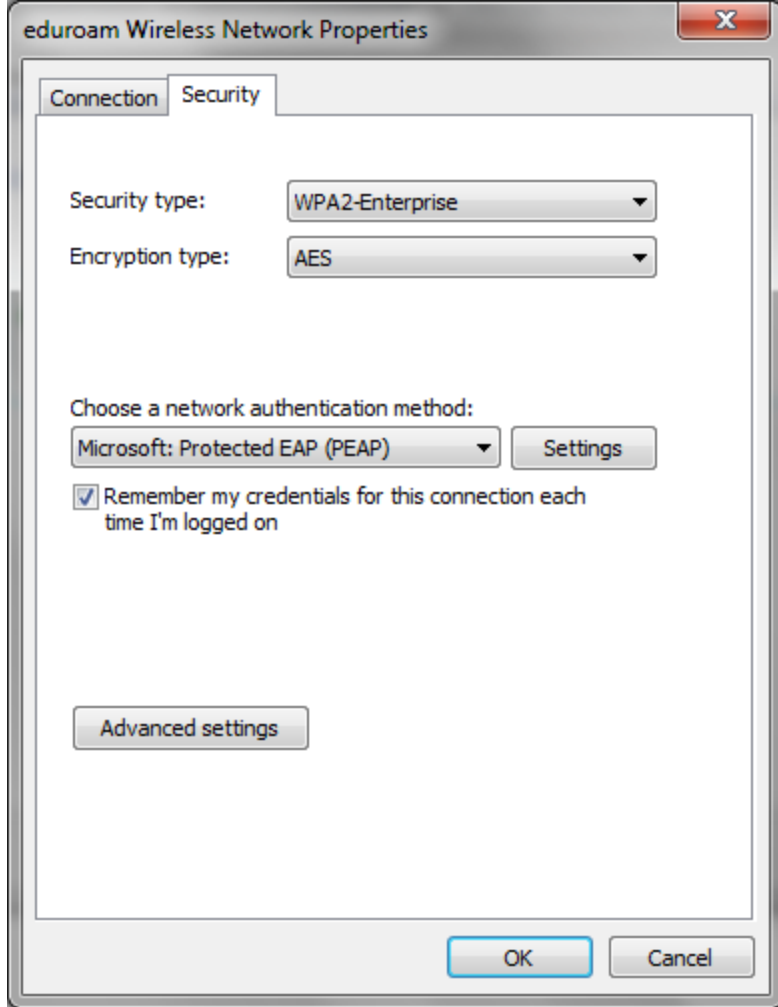
Click on "Manually Create a network profile"



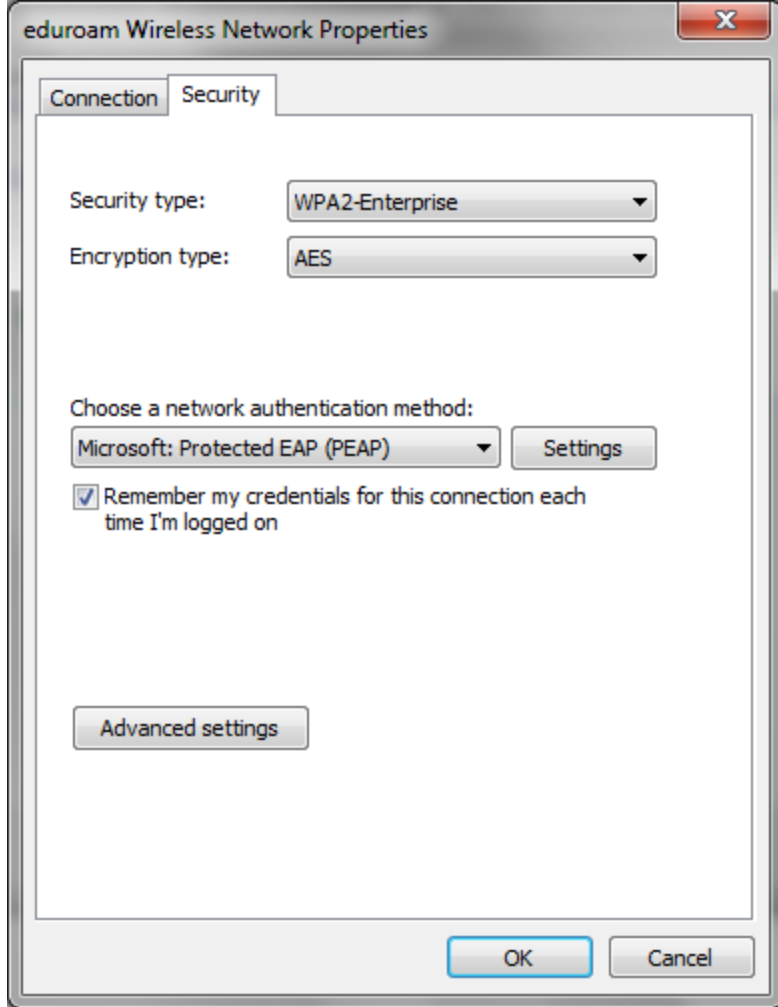
Enter the information above in each field and click “next”



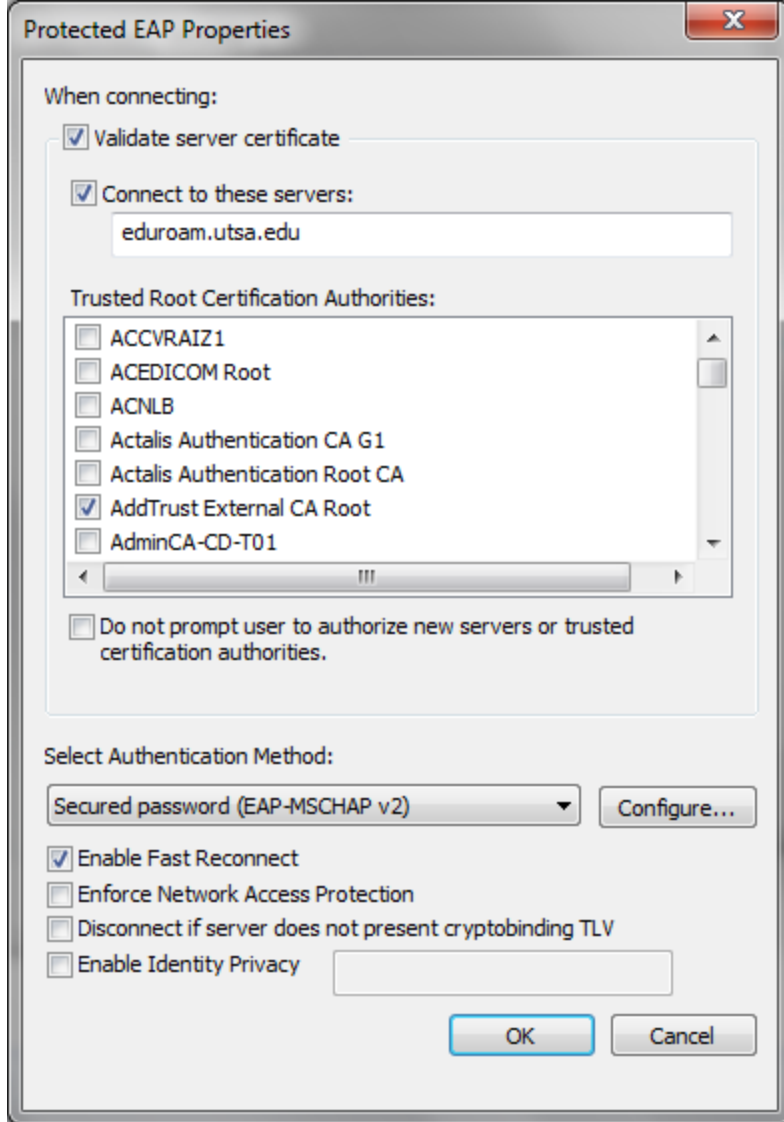
Click on “Change connection Settings”



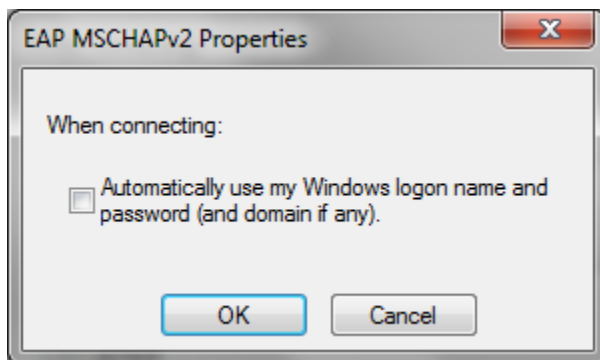
Click on the "Security" tab"



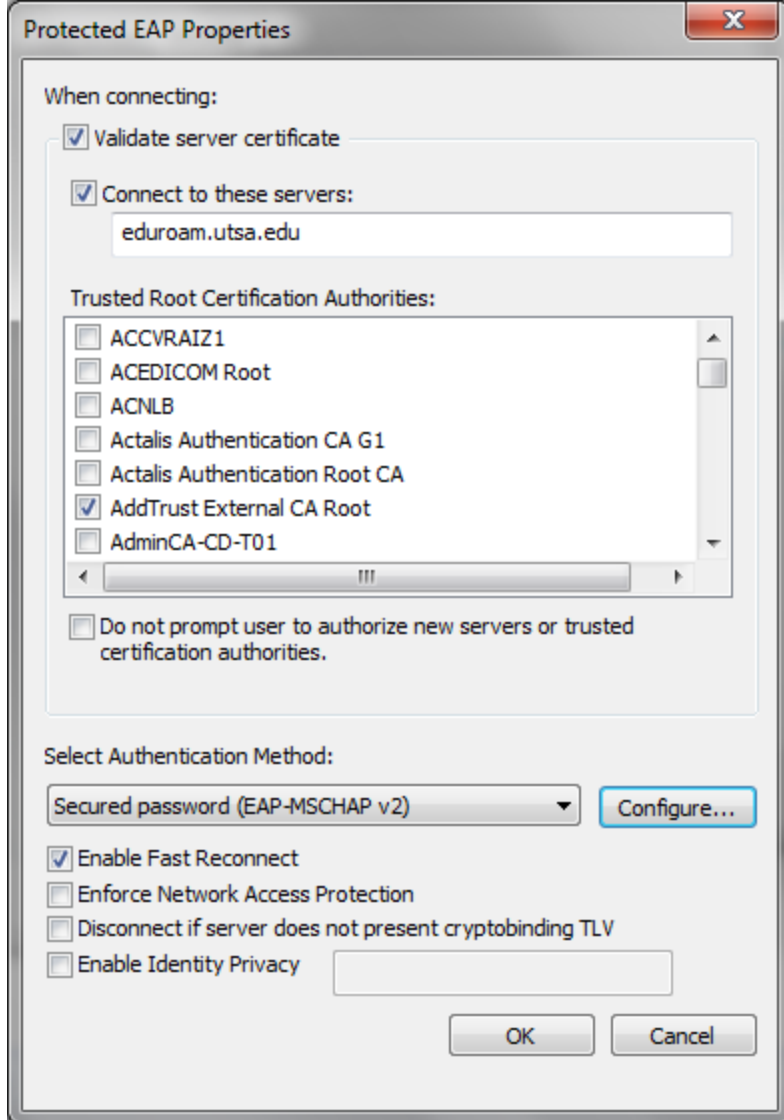
Then click on the "Settings" button



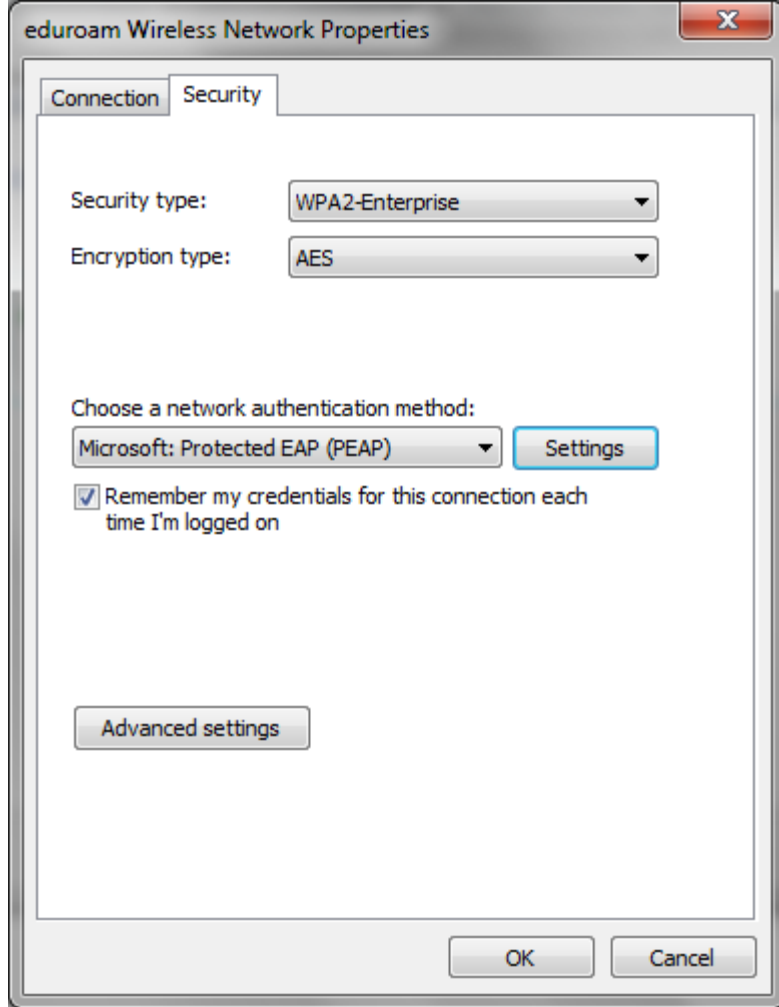
Click on the "Configure" button



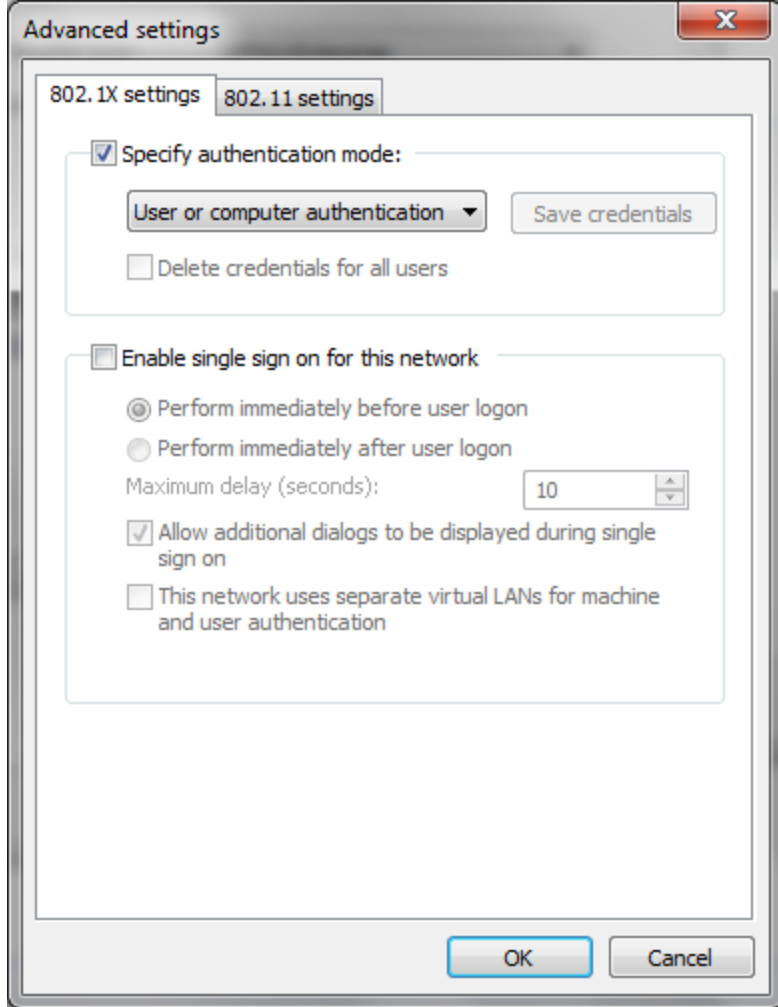
Uncheck the automatically use my Windows logon box and click "OK"



Click on the OK button in this screen:

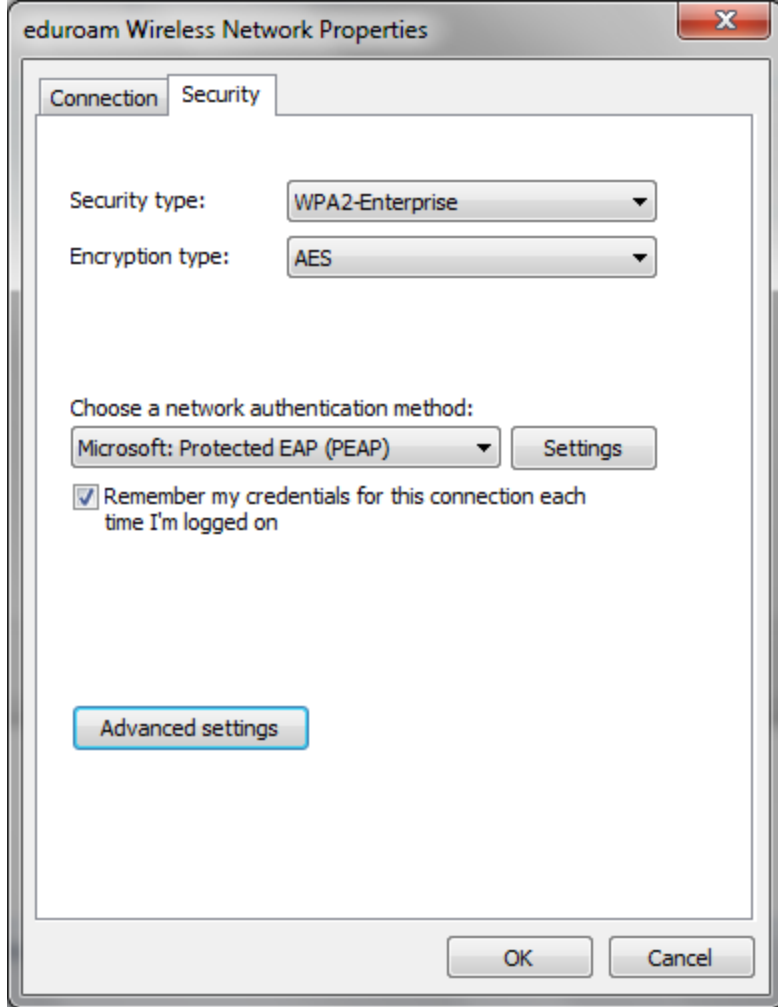


Click on "Advanced settings" button

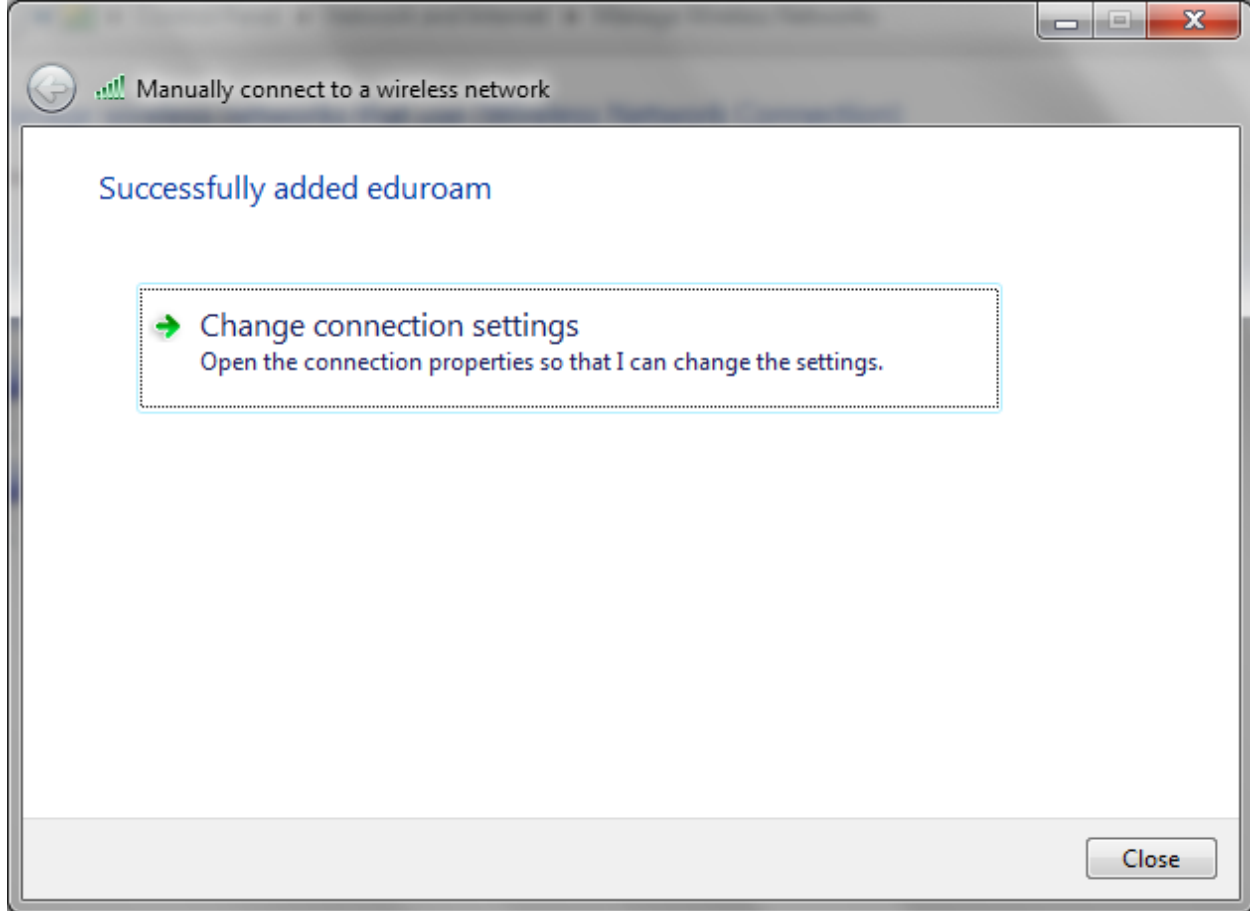


Check the box "Specify authentication mode" and select "User or computer authentication"

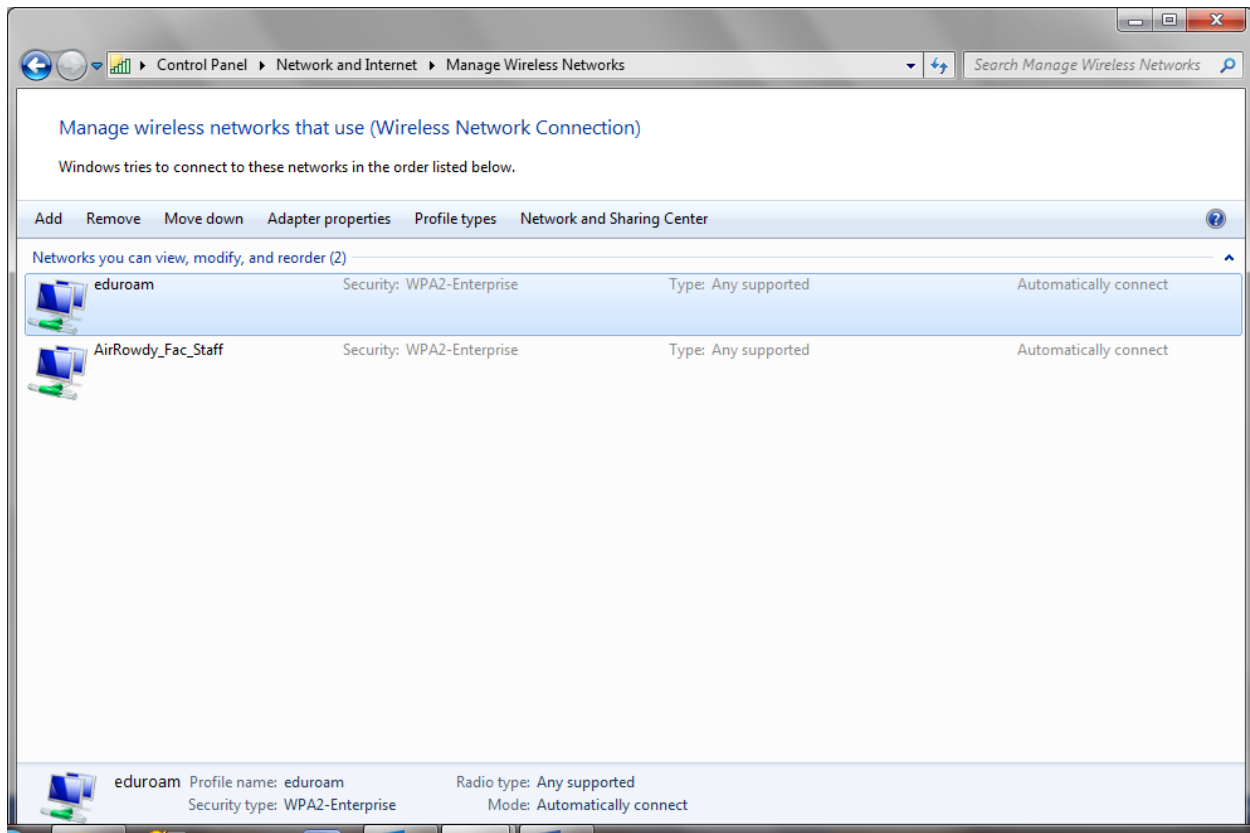
Click "OK"



Click "OK" again



Click "close"



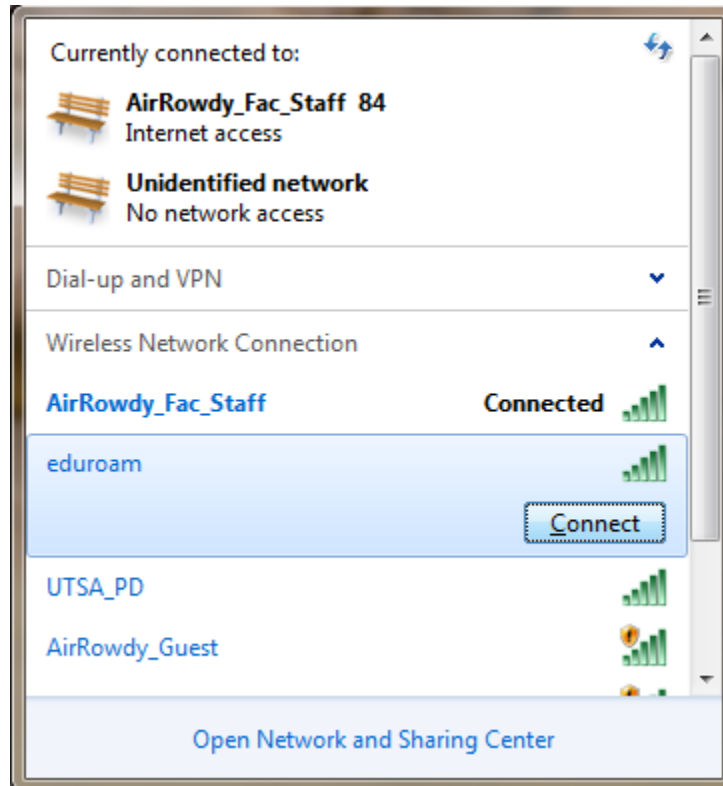
Click the red "X" to close this window.

Connect to eduroam :

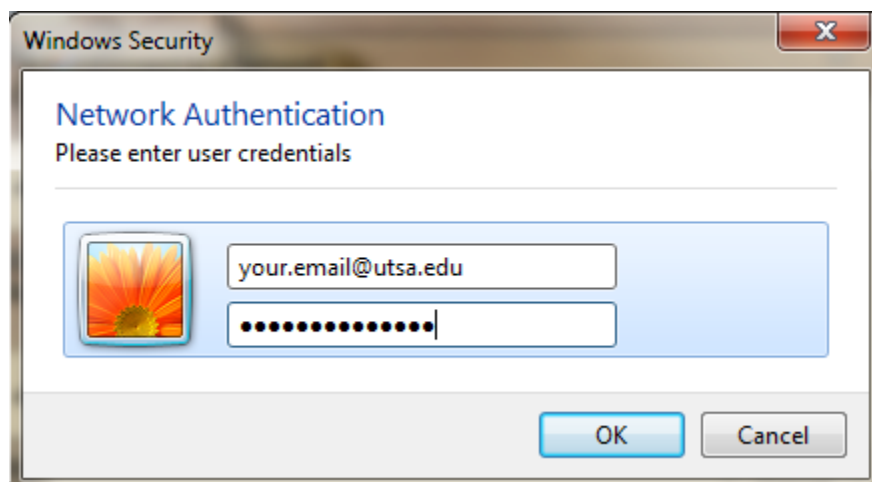
Click on the bars in the lower right of the desktop:



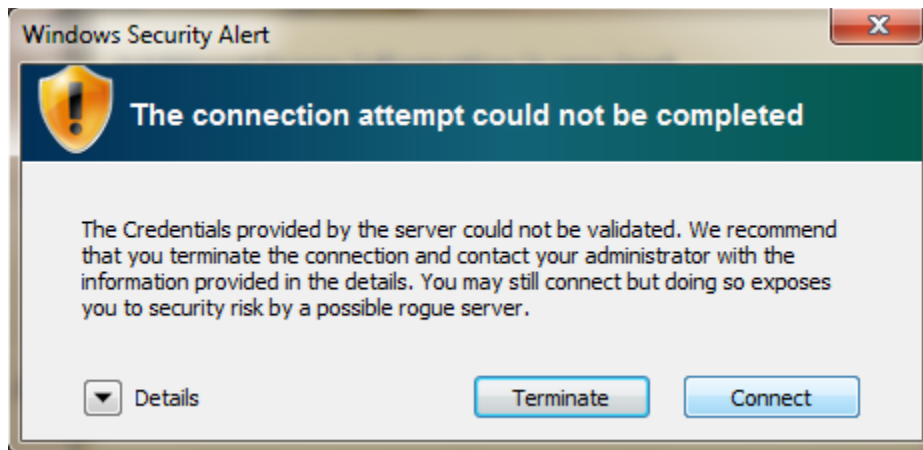
Click on eduroam and "Connect"



Enter your UTSA email ID and password:



This Security Alert window will pop up the first time you log in. Just click “Connect.”



You will then be connected...

