

UTSA[®]

The University of Texas
at San Antonio[™]

Campus Conversation 2.0

UTSA Alumni Board

Dr. Taylor Eighmy
January 23, 2019



The left side of the slide features a vertical column of decorative wavy lines. There are approximately 15 lines in total. Most are blue, but two are orange. The lines are arranged in a roughly vertical sequence, with some appearing in pairs or small groups.

Updates & Recent Accomplishments

New Campus Senior Leadership



Myron Anderson

Vice President for
Inclusive Excellence



Veronica Mendez

Vice President for
Business Affairs



Kendra Ketchum

Vice President for
Information Management &
Technology



LT Robinson

Interim Dean of Students



Urban Education Institute Foundational Gift

Finding solutions for
San Antonio's urban
education challenges

\$2.0 million

RAISE[®]
YOUR HAND TEXAS
FOUNDATION



Graham Weston
\$15 Million Gift

For UTSA's proposed
School of Data Science



Expanding the Downtown Campus **Land Transfers Valued at \$13 Million**

Parcels from the City of San Antonio and Bexar County for the National Security Collaboration Center, the School of Data Science and a new home for the College of Business



Architect selected
**School of Data
Science &
National Security
Collaboration Center**



JACOBS[®]

OVERLAND



Civic Discourse and Engagement

utsa.edu/civicdiscourse

Resources

- Trainings
- Workshops
- Guests Speakers
- Curriculum Integrations
- Programming

Academic Focus

- Library Guides
- Academic Inquiry & Scholarship
- Honors College / Top Scholars
- COPP Civic Engagement Minor



UTSA Day at the Capitol

Save the Date!

Wednesday, February 13, 2019

Students, faculty and alumni meet with state lawmakers to help increase public and legislative support for the university

Safe Campus: Information and Resources on Preventing Sexual Violence

utsa.edu/safecampus

Awareness Campaigns

- Beaks Up. Speak Up.
- Bringing in the Bystander ©
- Take Back the Night
- Call to Action Day
- One Love Foundation – UTSA Athletics

Initiatives

- Culture of Respect Collective
- Texas Association Against Sexual Assault
- Violence Prevention Advisory Committee



Established the
**Office of Student
Advocacy, Violence
Prevention and
Empowerment**
February 2018

Dedicated resource center for members of
the UTSA community





Diversity and Inclusion at UTSA

utsa.edu/diversity

Resources

- Trainings
- Workshops
- Guests Speakers
- Curriculum Integrations
- Programming

Academic Focus

- Library Guides
- Academic Inquiry & Scholarship
- Honors College / Top Scholars
- COPP Civic Engagement Minor



UTSA®

Strategic Implementation Plan

10 Aspirant Peer Models of Excellence



UC SANTA CRUZ



Carnegie RI
Institutions

UMBC



What we will look like in ten years

4+

thriving campuses, with more under consideration

>>45,000

students

>2,000

faculty

>>85%

first-year retention rate

6-8

areas of scholarly distinction

R1

Carnegie classification, with access to the National Research University Fund

>\$300M

in annual research expenditures

>>\$400M

endowment

>>35%

four-year graduation rate

>>\$1B

annual budget

>300

endowed chairs/professorships

>15

faculty in the national academies

>25

faculty receiving prestigious awards annually

>>60%

six-year graduation rate

>3 million ft²

new construction across campuses

STUDENT SUCCESS EXEMPLAR

like Georgia State, FIU, UCF

AAU-EQUIVALENT UNIVERSITY

like ASU, UC Santa Cruz, UC Riverside (UC Irvine)

UNIVERSITY OF CONTINUOUS IMPROVEMENT

like ASU, George Mason, Georgia State

Destinations

UTSA WILL BE

1

A model for
student success

2

A great public
research university

3

An exemplar for **strategic
growth and innovative
excellence**

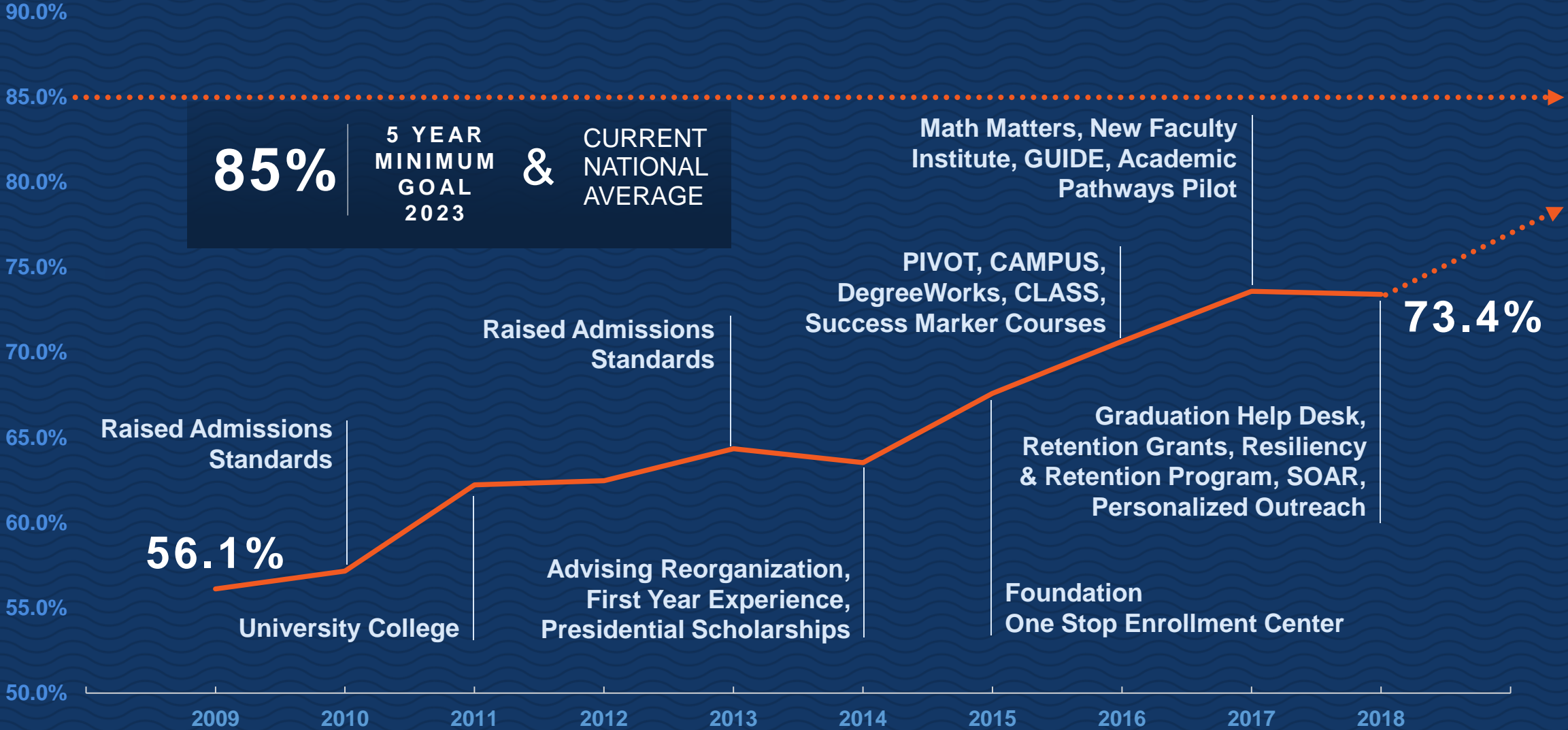


1

A model for student success

UTSA is a next generation Hispanic-thriving, multicultural institution where students from all backgrounds can excel. As a prosperity engine graduating world-engaged civic leaders of tomorrow, UTSA provides students with exceptional opportunities for experiential learning and classroom to career education.

First-Year Retention



85% 5 YEAR MINIMUM GOAL 2023 & CURRENT NATIONAL AVERAGE

Math Matters, New Faculty Institute, GUIDE, Academic Pathways Pilot

PIVOT, CAMPUS, DegreeWorks, CLASS, Success Marker Courses

Raised Admissions Standards

Raised Admissions Standards

56.1%

University College

Advising Reorganization, First Year Experience, Presidential Scholarships

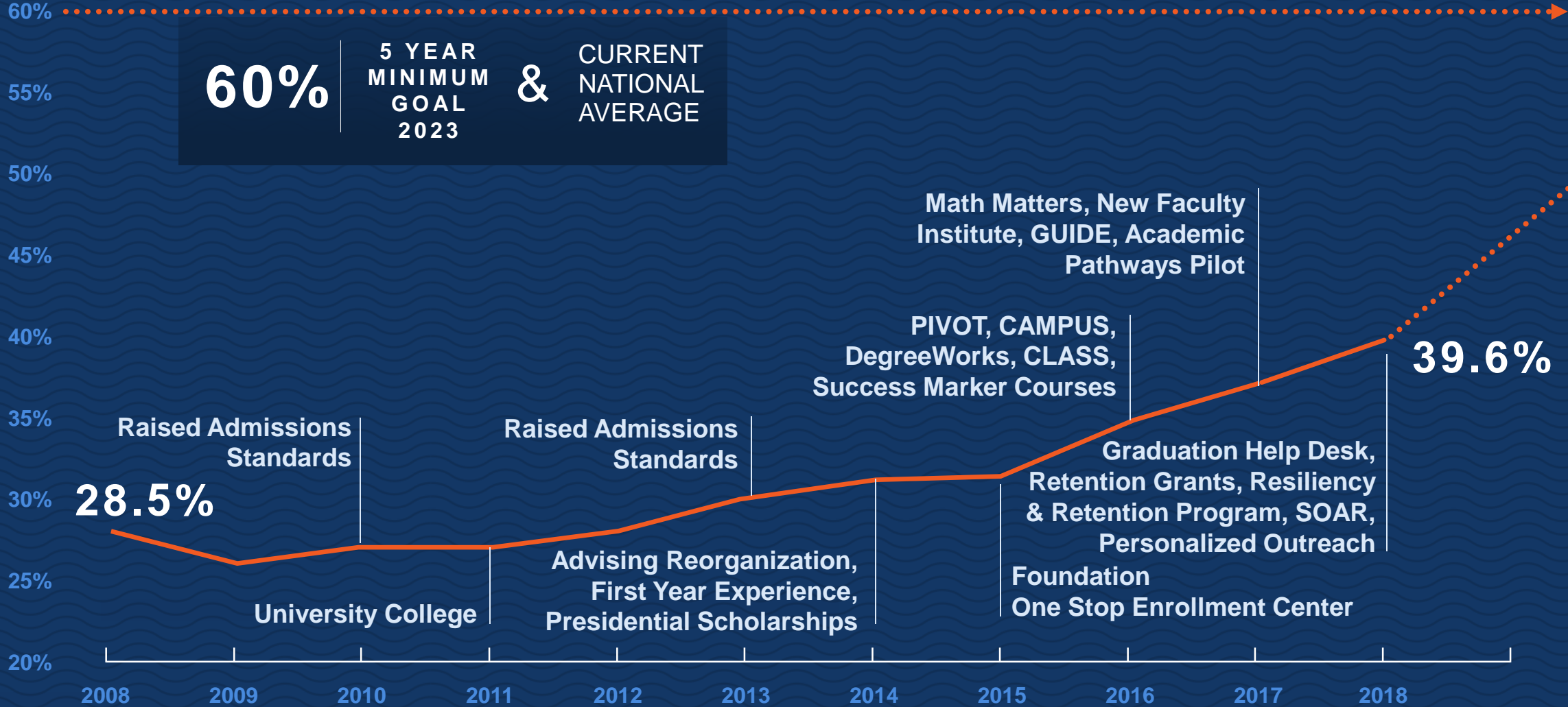
Graduation Help Desk, Retention Grants, Resiliency & Retention Program, SOAR, Personalized Outreach

Foundation One Stop Enrollment Center

73.4%

Data as reported to the Integrated Postsecondary Education Data System (IPEDS)

Six-Year Graduation Rates



Data as reported to the Integrated Postsecondary Education Data System (IPEDS)



2

A great public research university

With a focus on driving San Antonio's knowledge economy, UTSA is an urban-serving university of the future living out the notion that great universities need great cities, and great cities need great universities. As a discovery enterprise on the fast track to attaining National Research University Fund eligibility and an R1 designation by the Carnegie Commission, UTSA is positioned to align with members of the prestigious Association of American Universities.

Our Trajectory

NRUF

Tier One in Texas

R1

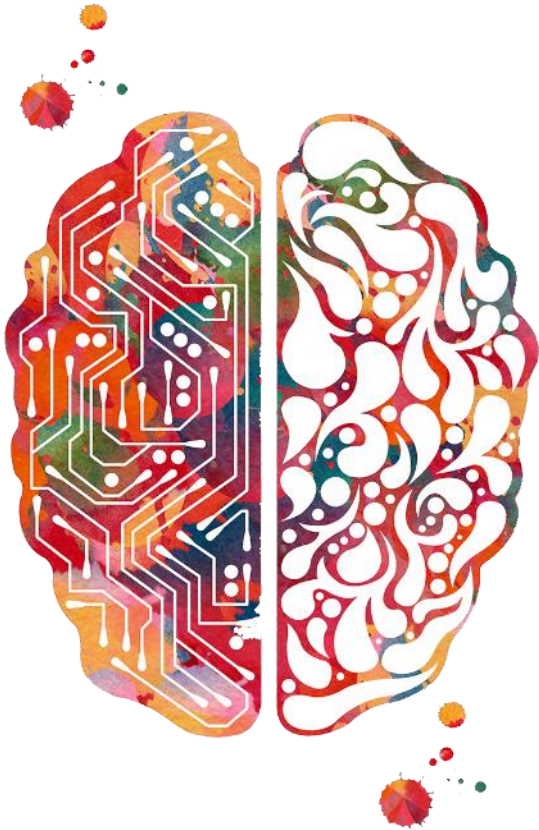
Highest possible
research
classification

**AAU
Aligned**

The nation's most
prestigious research
institutions

Brain Health

Cluster Hires FY2017



Dr. Jenny Hsieh

Professor, Semmes Chair
in Neurobiology and
Director, Brain Health
Initiative

*Previously at UT
Southwestern Medical
Center at Dallas*



Dr. Hyoung-gon Lee

Associate Professor &
John H. Doran
Distinguished Professor in
Peripheral Neuropathy

*Previously at Case
Western Reserve
University*



**Dr. Lindsey
Macpherson**

Assistant Professor of
biology specializing in
sensory neuroscience

*Previously at
Columbia University*



Dr. Asif Maroof

Assistant Professor of
biology specializing in
neurological disease

*Previously at
Harvard University*



Dr. Edward Golob

Professor and PI of UTSA
Cognitive Neuroscience
Lab

*Previously at
Tulane University*

Cybersecurity

Cluster Hires FY2017



Dr. Peyman Najafirad

Associate Professor of
Information Systems and
Cyber Security

Previously at Rackspace



Dr. David Dampier

Interim Chair and
Professor of Information
Systems and Cyber
Security

*Previously at Mississippi
State University*



Dr. Bradley Thayer

Professor of Political
Science and International
Cybersecurity

*Previously at the
University of Minnesota
Duluth*



Dr. Murtuza Jadliwala

Assistant Professor of
Computer Science

*Previously at
Wichita State University*



Dr. Zhan Qin

Assistant Professor of
Electrical & Computer
Engineering

*Previously at
University at Buffalo*



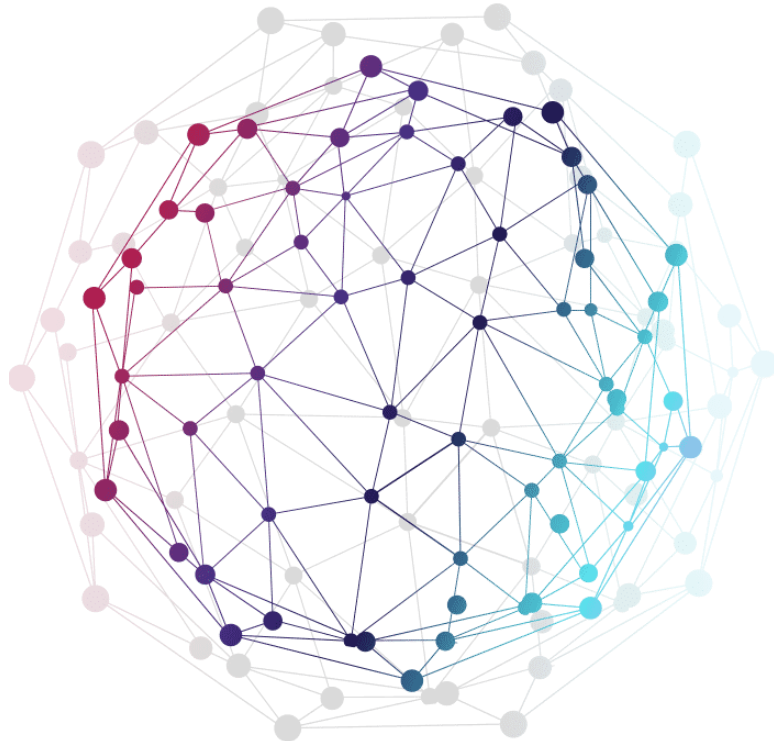
Dr. Guenevere Qian Chen

Assistant Professor of
Electrical & Computer
Engineering

*Previously at Savannah
State University*

Analytics & Data Science

Cluster Hires FY2018



Dr. Taposh Banerjee

Department of
Electrical and
Computer
Engineering, COE

*Previously at
Harvard University*



Dr. Yeonjoo Park

Department of
Management
Science and
Statistics, COB

*Previously at Univ.
of Illinois at
Urbana-
Champaign*



Dr. Wenbo Wu

Department of
Management
Science and
Statistics, COB

*Previously at
University of
Oregon*



Dr. Arkajyoti Roy

Department of
Management
Science and
Statistics, COB

*Previously at
Bowling Green
State University*



Dr. Anthony Rios

Department of
Information
Systems and
Cyber Security,
COB

*Previously at the
University of
Kentucky*



**Dr. Miltiadis
Alamaniotis**

Department of
Electrical and
Computer
Engineering, COE

*Previously at
Purdue University*



Dr. Dian Wang

Department of
Marketing, COB

*Previously at
Texas A&M
University*



Dr. Ying Huang

Department of
Demography,
COPP

*Previously at
University of
Albany-SUNY*



**Dr. Marcus
John Hamilton**

Department of
Anthropology,
COLFA

*Previously at
University of New
Mexico*



Dr. Jeff Howard

Department of
Kinesiology,
Health and
Nutrition, COEHD

*Previously at
Fort Sam Houston*



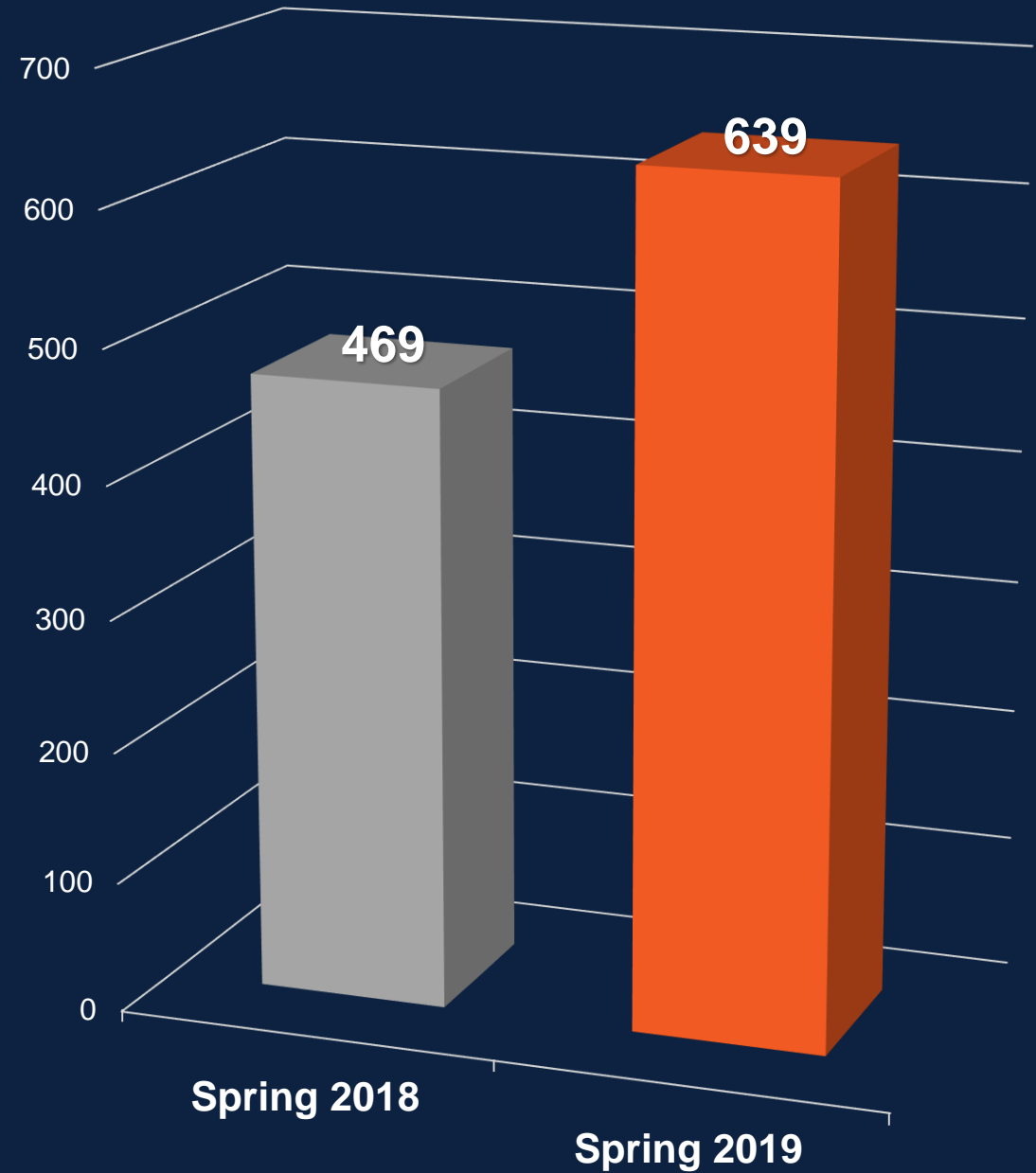
Dr. Kamal Al Nasr

Department of
Computer Science,
COS

*Previously at
Tennessee State
University*

Graduate Students
Rising Enrollment

36.2%
Increase



Building Other Areas of Scholarly Expertise



Materials Science & Advanced Manufacturing

35 faculty across 4 departments



Chemistry/Drug Discovery

24 faculty
Chemistry department ranked 78th in the U.S.



Cyber/Machine Learning & Analytics

79 faculty across 3 colleges
nationally ranked cyber programs



Sustainable Cities: Water & Energy

40 faculty across 5 departments

OTHERS TO BE DETERMINED

Emerging Partnership

Research & Development Consortium



UTSA



UT Health
San Antonio



TEXAS BIOMEDICAL
RESEARCH INSTITUTE



SOUTHWEST RESEARCH INSTITUTE



Brooke Army Medical Center &
San Antonio Military Medical Center

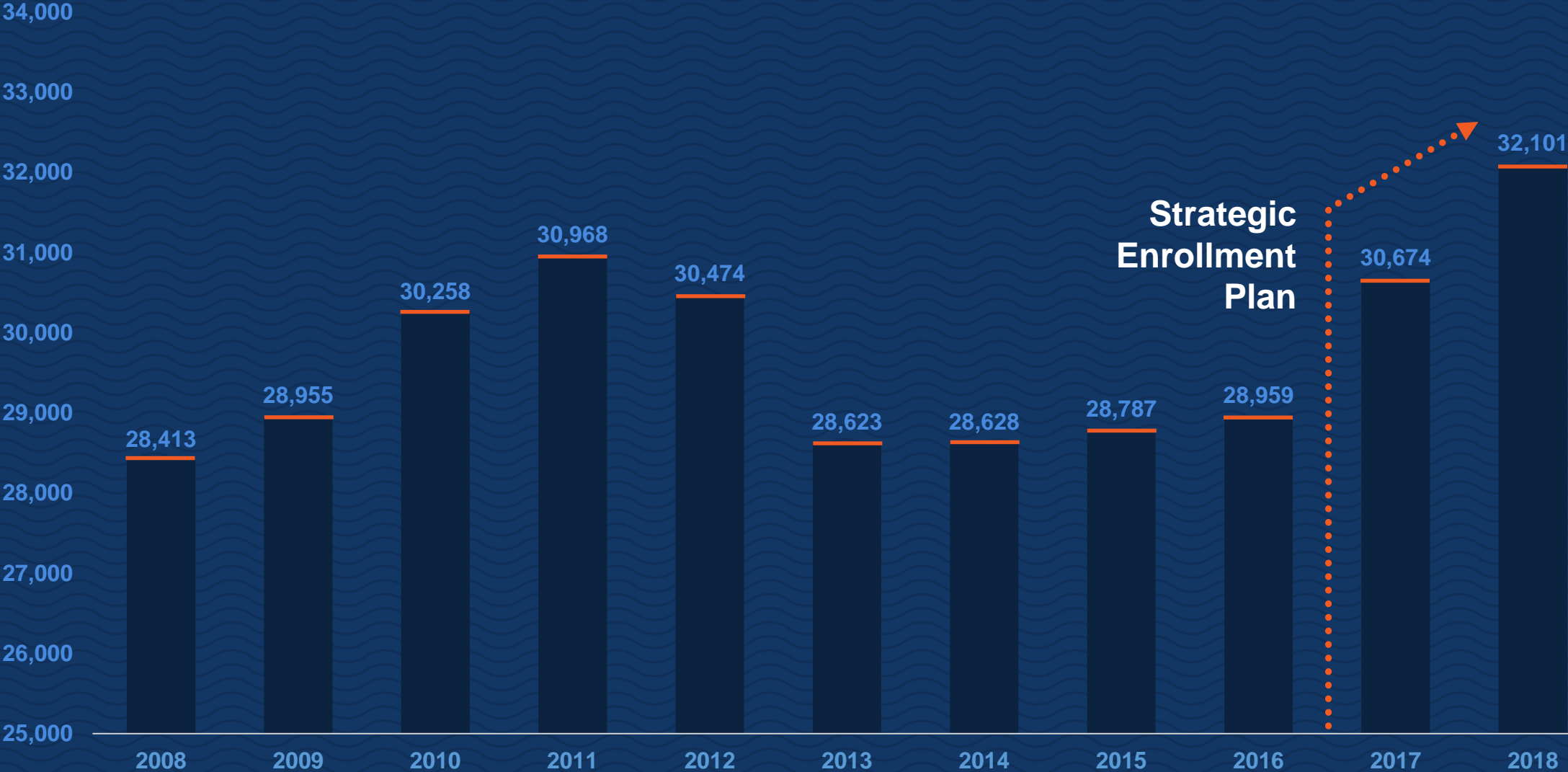


3

An exemplar for strategic growth and innovative excellence

UTSA will realize its full potential as a university by growing to become a more comprehensive institution. By focusing on nimbleness and continuous improvement, UTSA integrates innovative approaches and best practices to ensure goals align with operational processes. With a reputation as a great place to work, UTSA actively cultivates the excellence of its people.

Strategic Enrollment Growth



Data as reported to the Integrated Postsecondary Education Data System (IPEDS)



UTSA[®] Transfer Credit Calculator

Simplifies transfer admissions, making it easy to determine which credits will transfer to UTSA

future.utsa.edu/transfer



The logo for UTSA (University of Texas at San Antonio) is located in the upper left corner. It consists of the letters "UTSA" in a white, bold, sans-serif font. Above the text are three wavy lines: the top one is orange, and the two below it are blue. The entire logo is set against a dark blue background with a white scalloped edge on the left side.

UTSA®

Reimagining the Downtown Campus



San Antonio River

Pearl

San Antonio Riverwalk

Hemisfair Park

St. Paul's Square

Alamodome

San Pedro Creek Cultural Park

Alameda Theater

Frost Tower

UTSA
Downtown Campus

Zona Cultural

Site of New Federal Courthouse

H-E-B Headquarters

San Antonio Missions

UTSA
Institute of Texan Cultures

Southtown

500 ft

San Antonio River
San Pedro Creek

Riverwalk

San Antonio River

Frio Street Properties
14.3 acres

Cattleman's Square Residential Tower

Continental Hotel Residences

Proposed Downtown Campus | 8.08 acres

Current Downtown Campus | 18.3 acres

New National Security Collaboration Center

Expanded College of Business

New School of Data Science

Ten Year Plan 2018-2028

PHASE 1: 2018-2023

PHASE 2: 2023-2028

San Pedro Creek



Campus Master Plan

Guiding the development
of UTSA's campuses
over the next decade



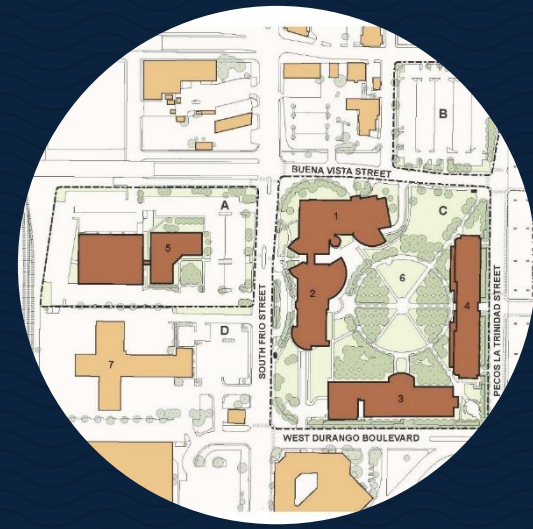
ACREAGE

UTSA Campuses

- 758 total acres
- 573 developable acres



Main Campus
600 acres | 495.2 developable acres



Downtown Campus
18.3 acres | 8.3 developable acres



Park West Campus
125 acres | 70 developable acres



Institute of Texan Cultures
14.6 acres | 0 developable acres

Capital Campaign

Providing UTSA with the infrastructure and resources to achieve recognition as a model for student success and research discovery



Roadrunner Village

A vibrant new neighborhood featuring housing, dining and retail space that enhances the campus experience for the university community.



Freshman Residence Hall

Designed with student success in mind, UTSA's newest residence hall will house 360 freshmen



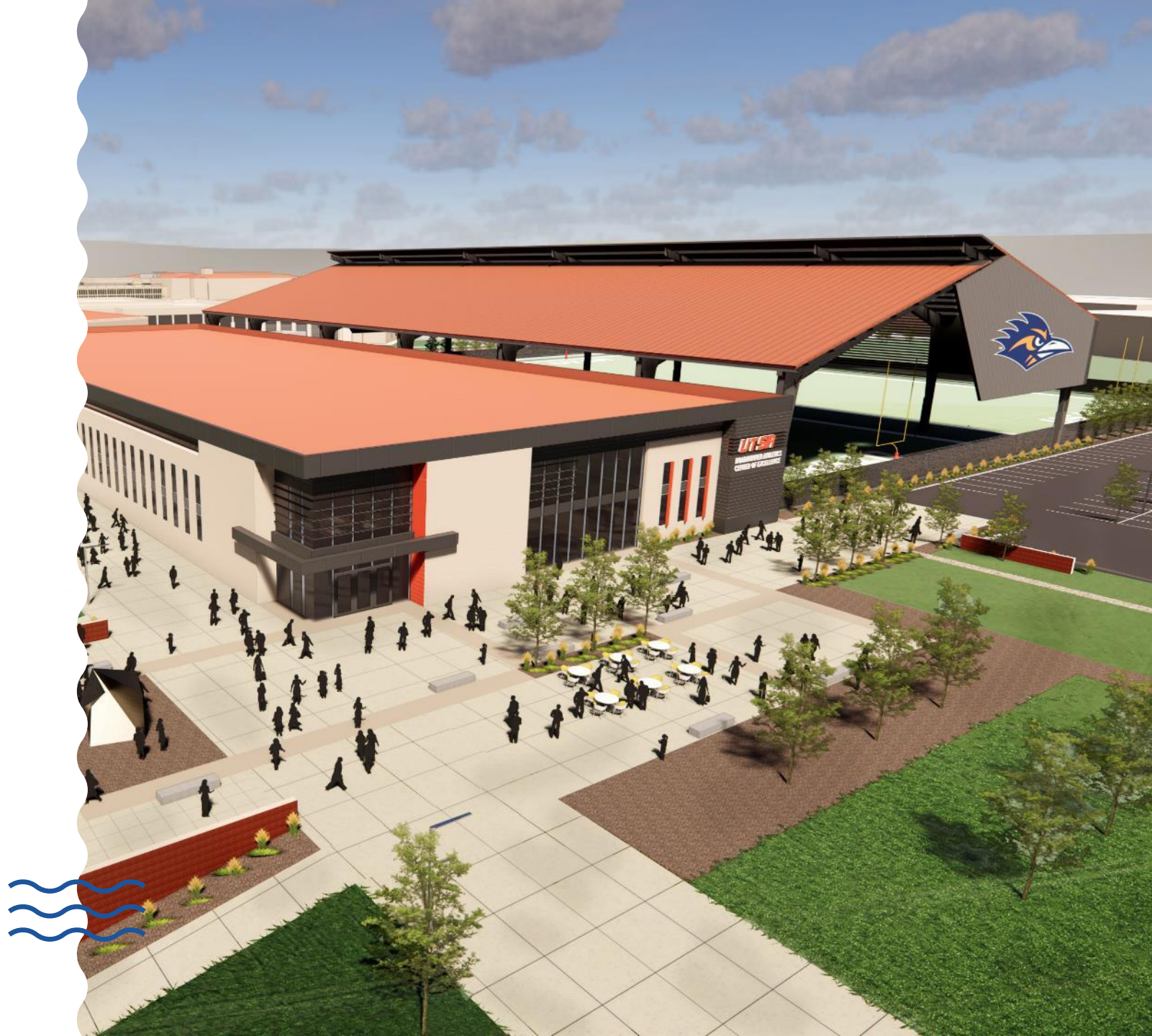
Residential Honors College

A new residence hall for the university's top students, bringing UTSA's Honors College to new levels of national prominence



Roadrunner Athletics Center of Excellence

A comprehensive
multipurpose sports center to
address student-athlete
academic success, safety,
performance and wellness



School of Data Science

Centralizing UTSA's talent and resources in cyberscience, data science and data management into one powerful new school



Columbia University
Data Sciences Institute

National Security Collaboration Center

Solving the nation's
greatest cybersecurity
threats



Expanding the College of Business

A second location to accommodate rapid enrollment growth, situated in the heart of San Antonio's business community.



Portland State University
School of Business

Cattlemen's Square Residential Tower

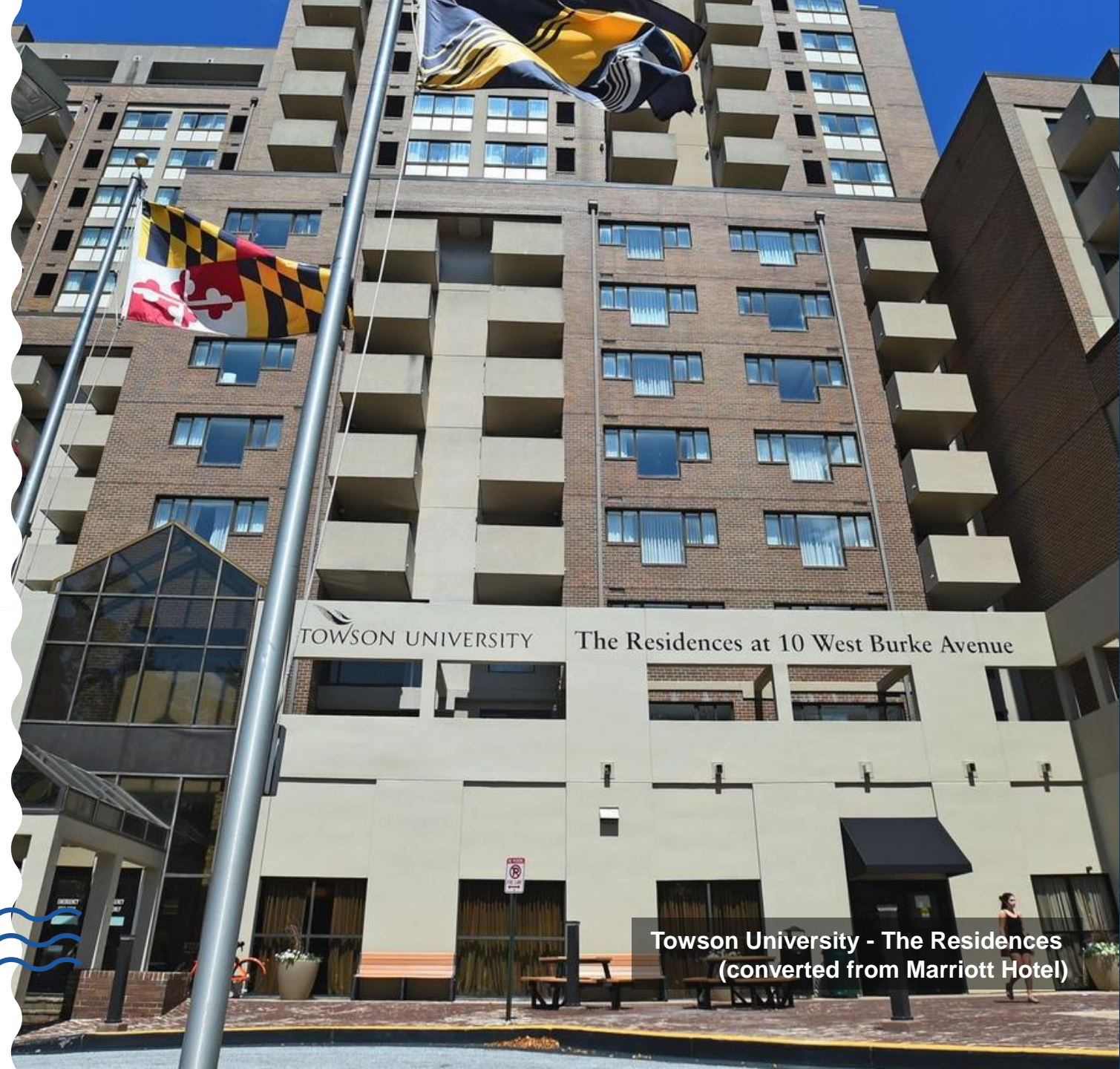
A mixed-use residential facility to house UTSA's growing population at the Downtown Campus



Arizona State University
Taylor Place Residence Hall

Continental Hotel Residences

A mixed-use residential facility to house UTSA's growing population at the Downtown Campus



Towson University - The Residences
(converted from Marriott Hotel)

Classroom to Career

Providing transformative learning experiences such as internships, service learning, undergraduate research, study abroad and more.



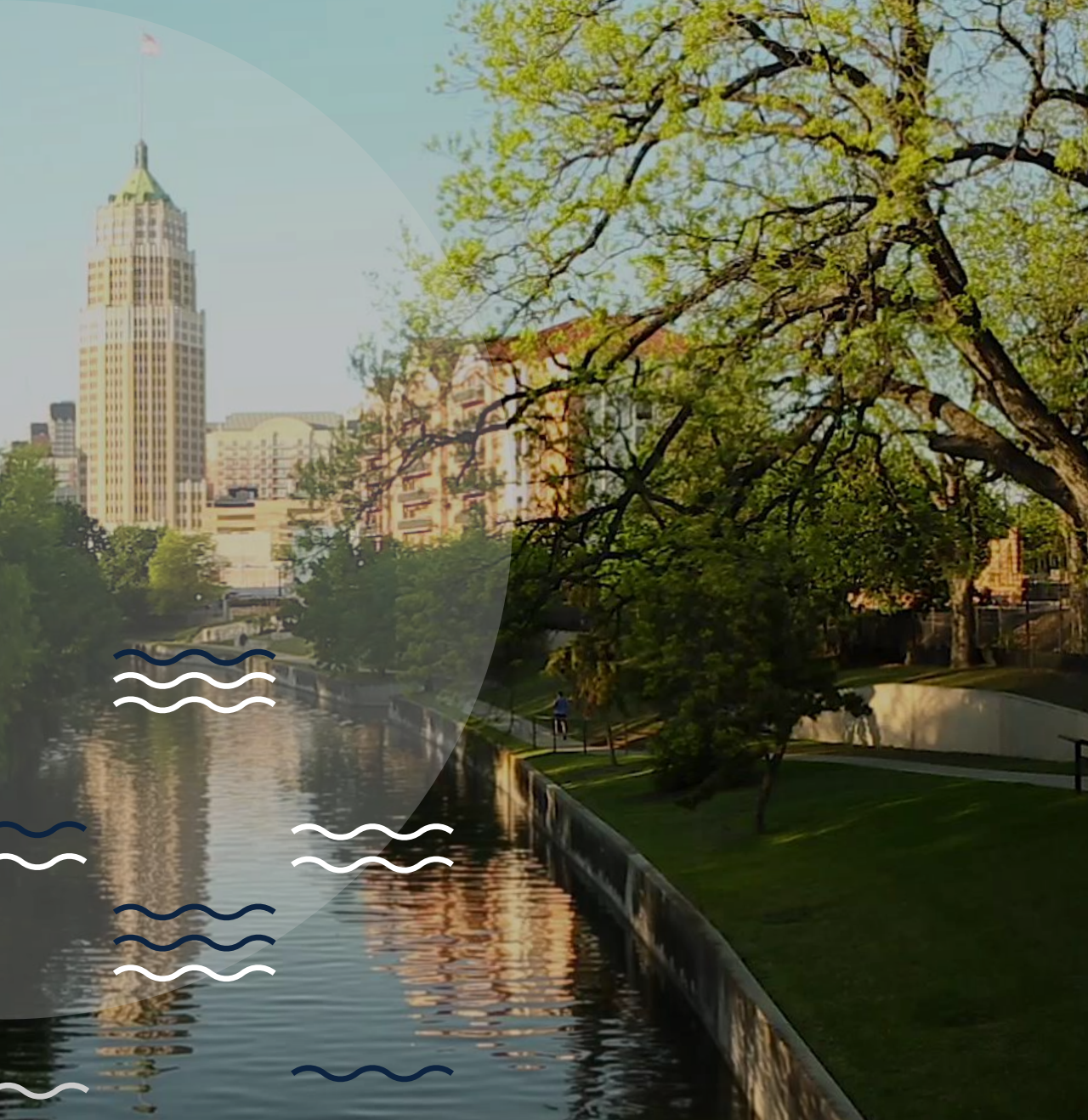


Alumni Association

Governance & Regional Clubs

UTSA[®]

The University of Texas
at San Antonio[™]



Questions?
Thank you!