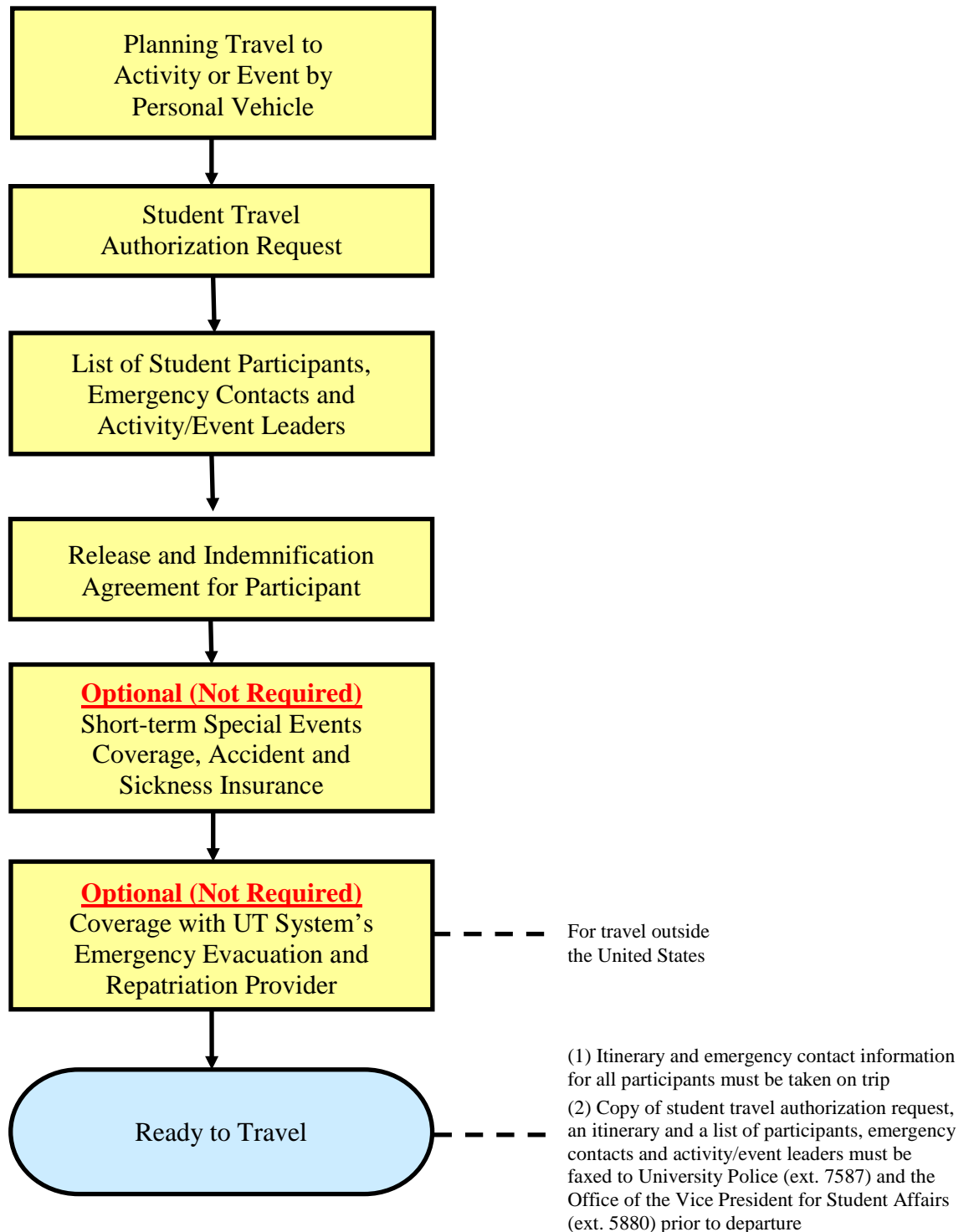


Flowchart for Student Travel by Personal Vehicle



While it is strongly recommended that any personal motor vehicle used in travel associated with an activity or event and the driver of and passengers in such vehicle be in compliance with the relevant standards and requirements of the student travel policy, the university does not check or confirm that such standards and requirements have actually been satisfied.

The organizing department must notify students who use their own vehicles that they must hold a valid driver's license not currently suspended or revoked and carry at least the minimum insurance coverage as required by law. The university assumes no responsibility or liability for the use of their personal vehicle for the activity or event. Therefore, they or the personal insurance covering the vehicle will be responsible for any liability that may arise from such use. This notification must be done in writing and in advance of travel to the activity or event.