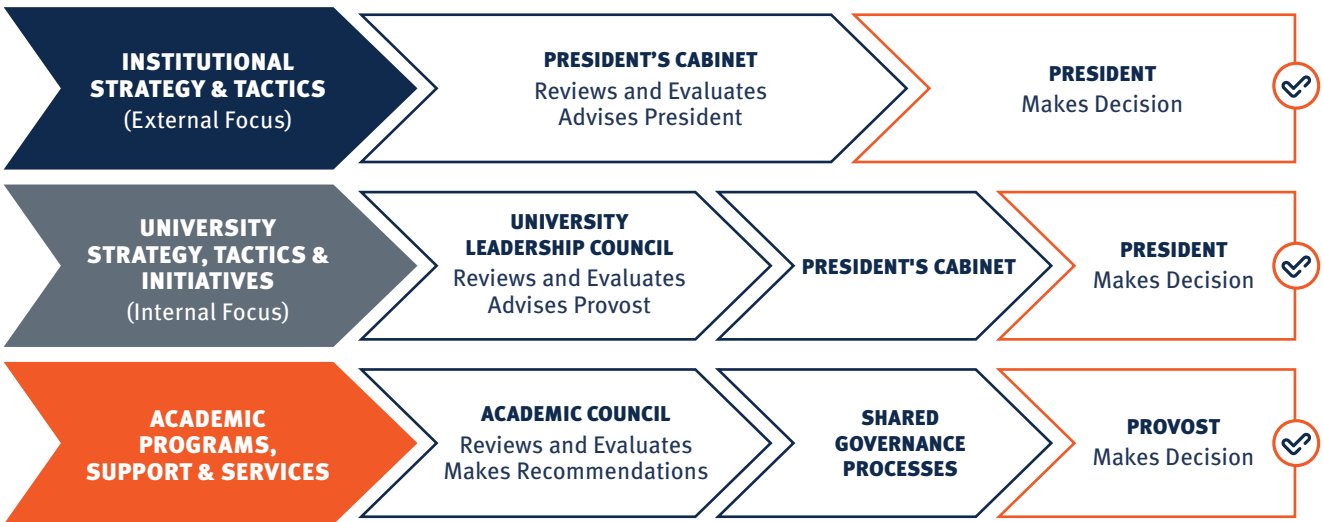


IRM Essentials

# Governance Approval Workflow

**IRM is governed by a collaborative, data-driven process, including regular touchpoints with unit representatives.**

Under IRM, we all have shared responsibilities in deciding budget priorities. While ultimate budgetary decisions are made by the president, the President's Cabinet and University Leadership Council provide guidance and key insights to the overall decision-making process. For recommendations related to requests or reviews, the decision-making process follows the university's **participatory governance framework**:



[View Participatory Governance Framework online »](#)

### IRM EXECUTIVE LEADERSHIP STRUCTURE

UTSA's executive leadership structure provides a clear process for campus planning, prioritization and decision making that reflects our core as an academic enterprise. The process also includes two major committees:

