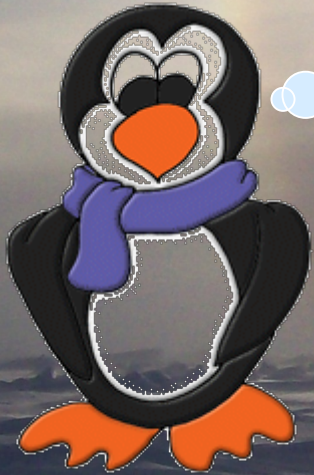


# *SIMBA 2007*

## Fabra Elementary



I wonder what  
our friends from  
Texas saw in  
**Antarctica?**

I wonder  
what they  
did?



I wonder  
how they  
got here?



# Map of Antarctica



## Some Facts:

- Antarctica is a continent similar to North America
- The South Pole is in Antarctica

A fun way to look at Antarctica



[Map from the [Perry Castenada Library](#),  
Courtesy The General Libraries, The University of Texas at Austin]

# Some Fun Facts

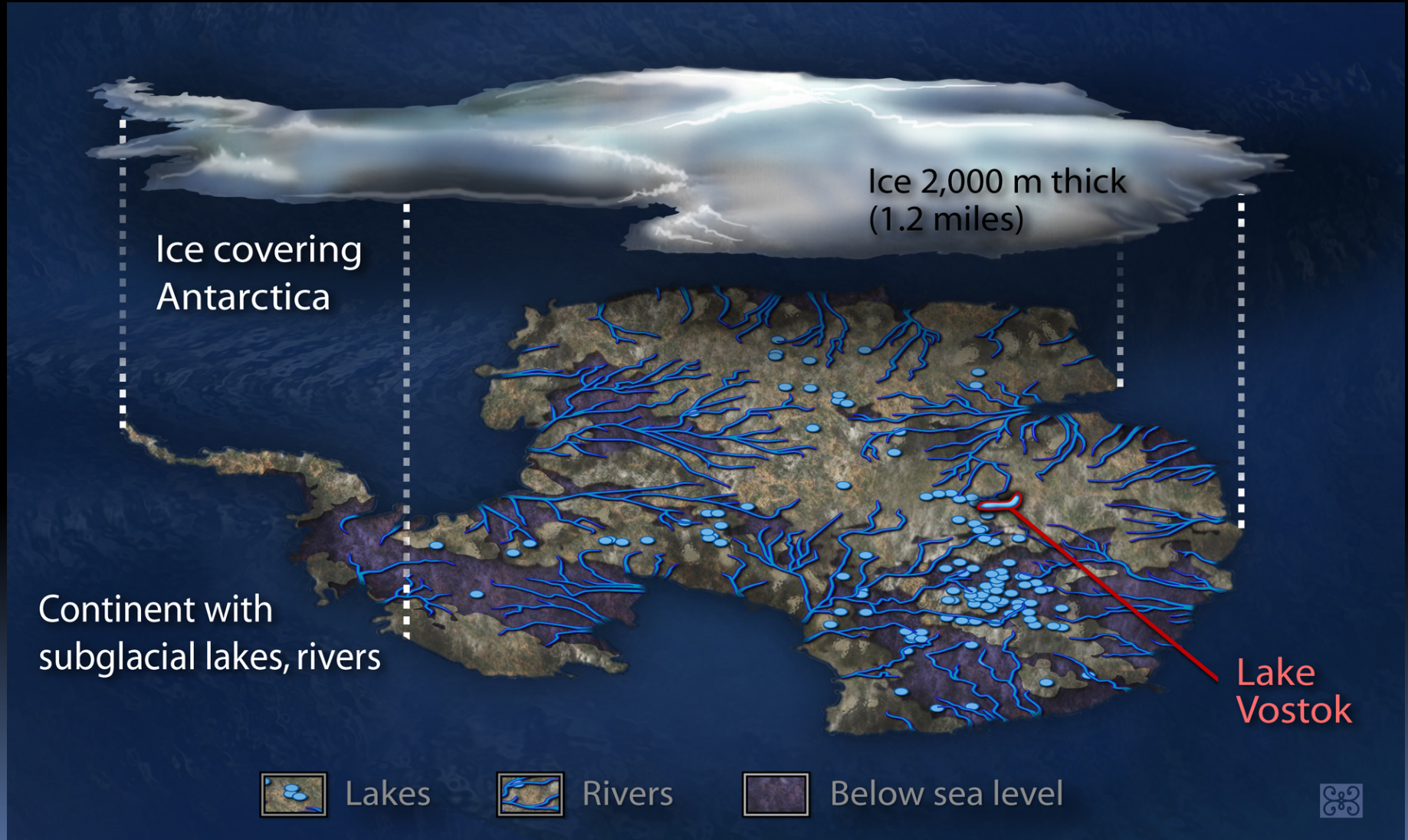
- *About the size of the United States and Mexico combined*
- *Antarctica is the coldest, windiest, highest and driest continent on Earth*





- *Antarctica is actually a desert 98 percent covered by a thick ice sheet.*

- *This sheet of ice is by far the largest body of fresh water and of ice on earth, comprising nearly 70 percent of the whole world's total of fresh water*



# *Why were we there?*

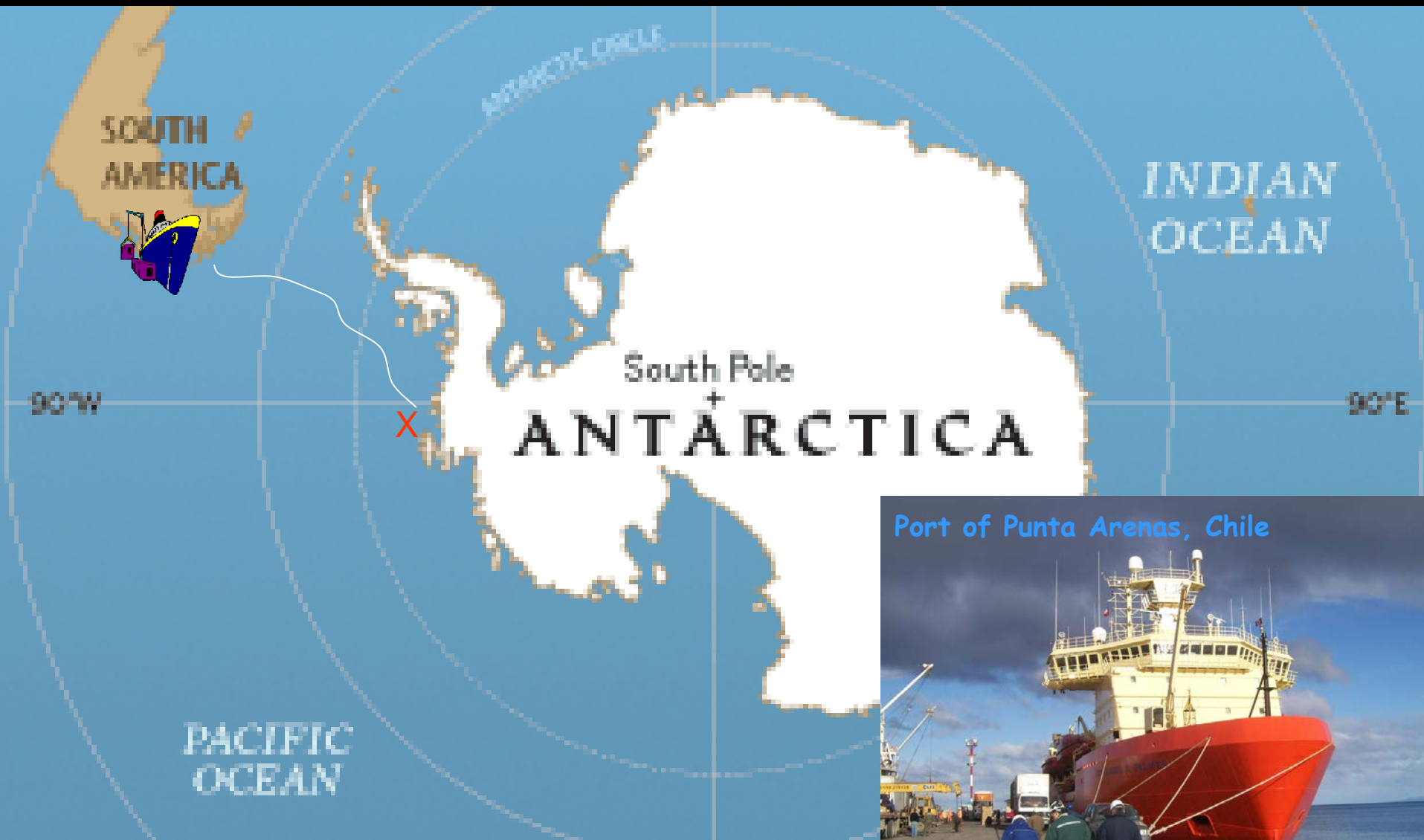
- *To study an important area of the Earth*



*By knowing this we can ask ourselves:*

*How can we take better care of our planet?*

# How we got there...



Port of Punta Arenas, Chile





# *Inside the Icebreaker*





More ships decorated for Chile's Independence Day  
September 19th





# *Straits of Magellan*



# *On our way to Antarctica*

*Straits of Magellan*





*Albatross*




*Southern Giant Petrels playing in the water*



*Northern Giant Petrel*



A photograph of a large red ship with the name 'NATHANIEL B. FA...' partially visible in blue letters. The ship is partially obscured by a cartoon illustration of a penguin on the left and a seal on the right. The penguin is wearing a striped hat and a scarf, and is holding a small object. The seal is sitting on a patch of white sea ice. A speech bubble is positioned above the penguin, containing the text 'So what did you see when you reached the sea ice?'. The background shows the ship's structure and a cloudy sky.

So what did  
you see when  
you reached  
the sea ice?





# *1<sup>st</sup> Thing to Remember Before You Go to the Bottom of the Earth*

*How do you  
stay warm?*



## *Clothing Inside the Ship*



- *Cotton Sweaters*
- *Light Jackets*





# Clothing on the Ice



- Thick Undershirt
- Heavy jacket to break the wind and keep you warm
- Snow pants
- Snow boots
- Wool gloves
- Windbreaker gloves
- Hat
- Neck wrap
- Goggles
- Sunscreen





*Clean suits over outside gear*



*Some are fine with less layers*



*Some need more*



*Some, you can't even tell who they are*





# *Antarctic Animals who we met....*

*On the ice*

*Leopard Seals*



# *A lot of Crabeater Seals*





# *Emperor Penguins*



# *Adelie Penguins*





# Antarctic Birds



*Antarctic Petrel*



*Snow Petrel*



*Black browned Albatroos*



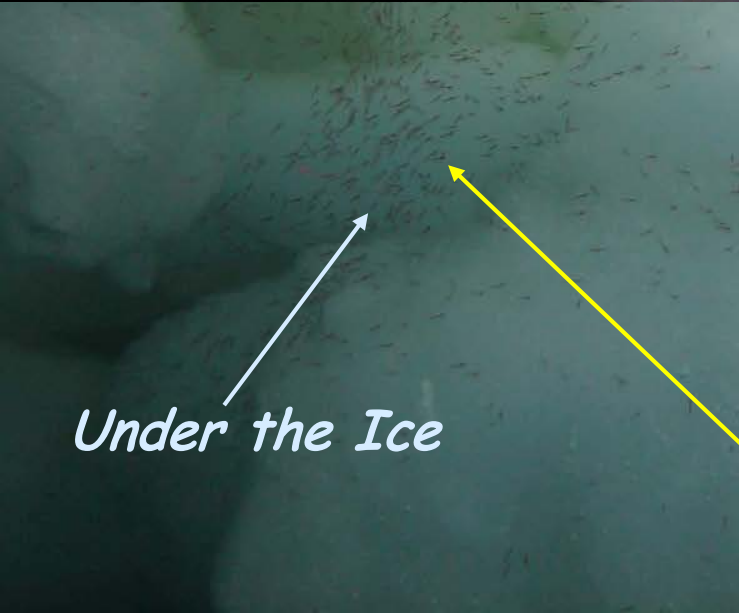
*Jellyfish*



*Underwater Animals*



*Under the Ice*



*Krill*





# *Minke Whales*



# *What did we do in Antarctica?*

*Study the ice conditions*





*Measured the depth of snow and ice*



*You can't go to Antarctica  
without:*



*Building an igloo*







*Everyone wants a chance to be in it*



*Going back home...*



*But if you want to help save the Earth too...*





*You can be a Polar Scientist too!*



Antarctica

*And...*

*You can join us for our next trip to Antarctica*



Antarctica



# Videos

- Emperor Penguins
- Adelie Penguins
- Crabeater Seals
- Skidoo Ride - Filming Mr. Weissling