

FY '25

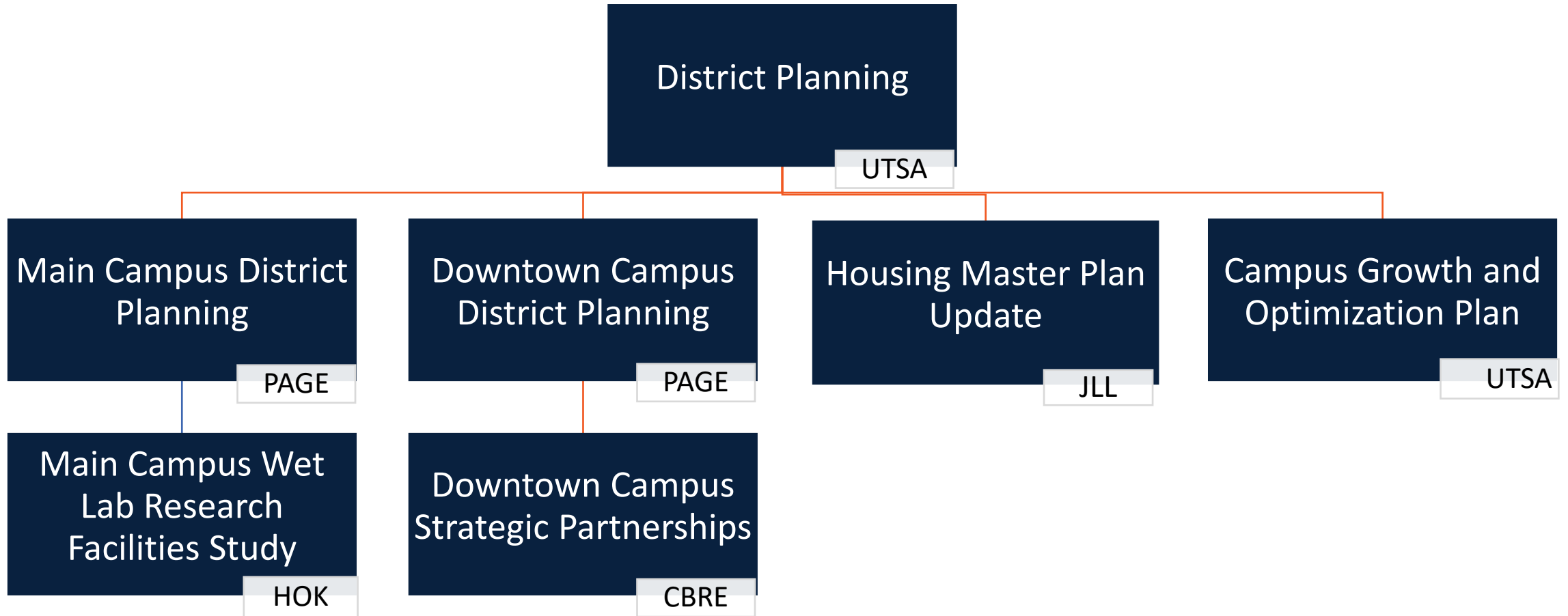
District Planning



Purpose

Enhance the 2019 Masterplan and develop a strategy for physical space planning over the next 5–10 years

Planning Structure



University Stakeholder Objectives

Support Service Objectives

Understand Current Functionality and Capacity Analysis

- Collect & assess current space utilization and functional requirements.
- Ensure physical space accounts for departmental growth and initiatives.
- Review student experience of all student support services.

Develop Initial Scenarios to Accommodate Growth and Adjacencies

- Identify opportunities for expansion or new locations to improve services.
- Develop scenarios to address needs, challenges and opportunities.
- Align student services to the institution's growth plans & strategic priorities.

Academic Space Objectives

Optimize Space for Department Success

- Assess and improve current space utilization.
- Ensure adequate physical space for departmental growth and initiatives.
- Optimize workspace layout for collaboration and productivity.

Enhance Student Engagement

- Document current student engagement initiatives and their impacts.
- Identify and plan future opportunities for community involvement (e.g., partnerships, workshops, internships).

Foster Departmental Collaboration

- Identify and document current and potential future collaborations.
- Develop strategies for ongoing communication and collaboration between departments.

Research Space Objectives

Lab Needs and Future Resiliency

- Evaluate lab space for current and future research functionality (infrastructure, safety, security needs, etc...)

Collaboration and Efficiency:

- Understand lab adjacencies and collaboration preferences/opportunities
- Identify underutilized elements and potential for shared functions.

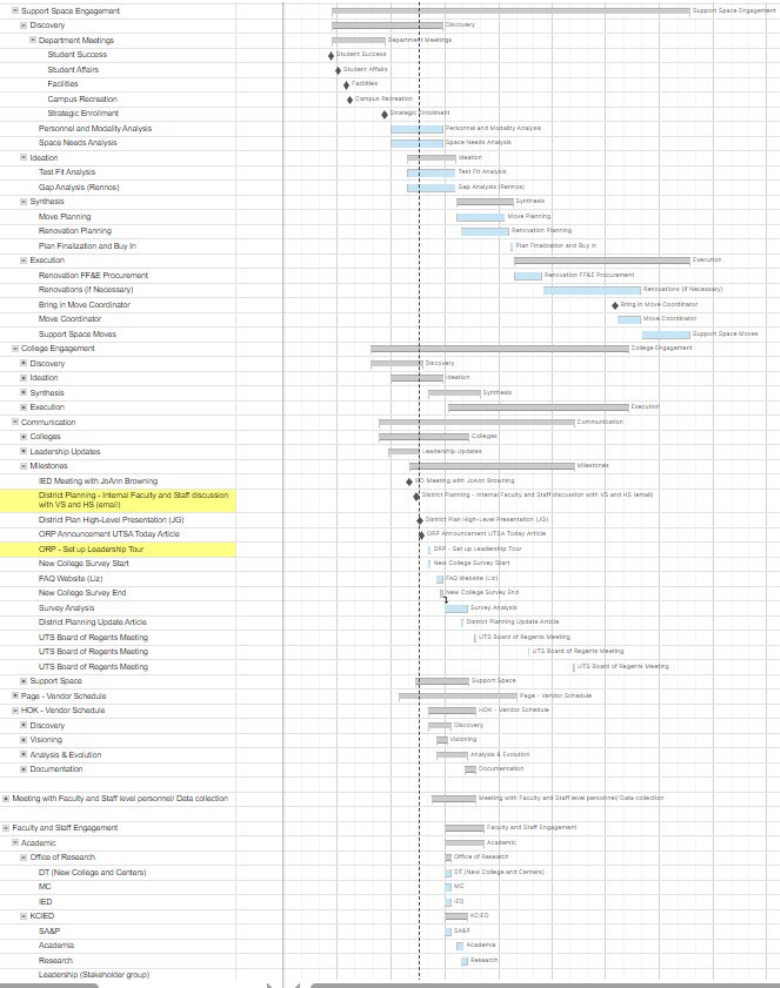
Core Lab Suitability and Growth

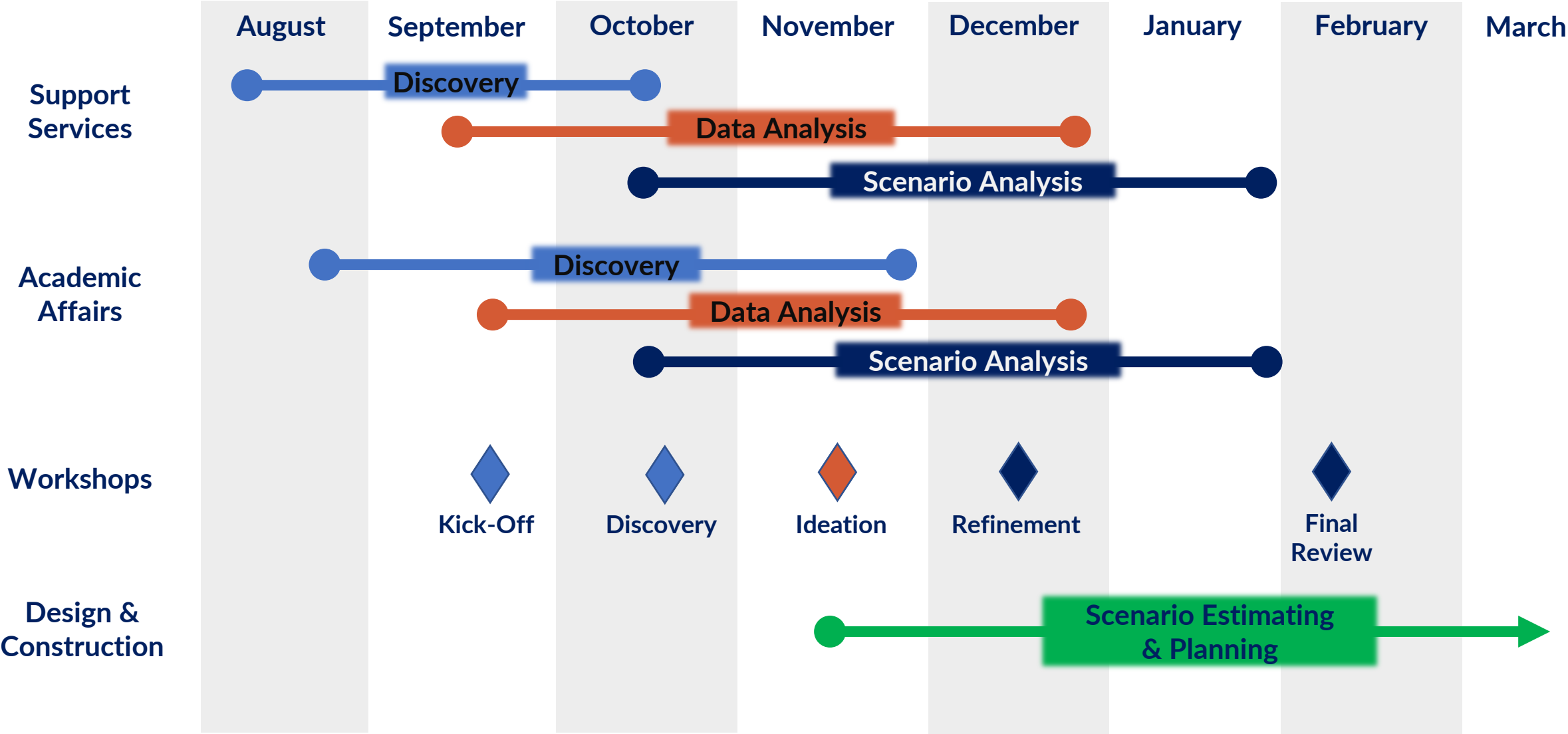
- Assesses existing current core lab spaces, identify underutilized elements and opportunity for new core lab spaces
- Identifies safety or functionality issues, evaluates equipment lifespan and usage, and consider necessary new technologies and capacity for projected growth



Schedule

■ Schedule Review & Gantt Chart Analysis





Communication Plan

- ➔ FAQ Website
- ➔ District Planning email address
- ➔ VPBA Comms & RPM will continue with campus wide updates



An aerial photograph of the San Antonio skyline at sunset. The sun is low on the horizon, casting a warm orange glow over the city. In the foreground, a large, modern building with a glass facade and the 'UTSA' logo is visible. The background features a dense collection of skyscrapers, including the Tower of the Americas on the right.

UTSA®

Business Affairs

Questions?