

Undergraduate Admissions

The UTSA Fact Book
Office of Institutional Research
Fall 2018

First Time Undergraduate Student Applications

The Applied, Accepted, and Enrolled information comes from the Coordinating Board Admissions file (CBM00B), this file contains only the Summer and Fall applications for each year. Only students who have never applied at the level are included in this information. Enrollment is based on the fall semester, in prior years it had been based on the student applied for. Note that although many new students enter UTSA each year only students who are first time students seeking a degree at UTSA are included in the Cohort for graduation and retention information. For more information on this topic please contact the Office of Institutional Research at (210) 458-4706.

First Time Undergraduate Applied, Accepted, and Enrolled

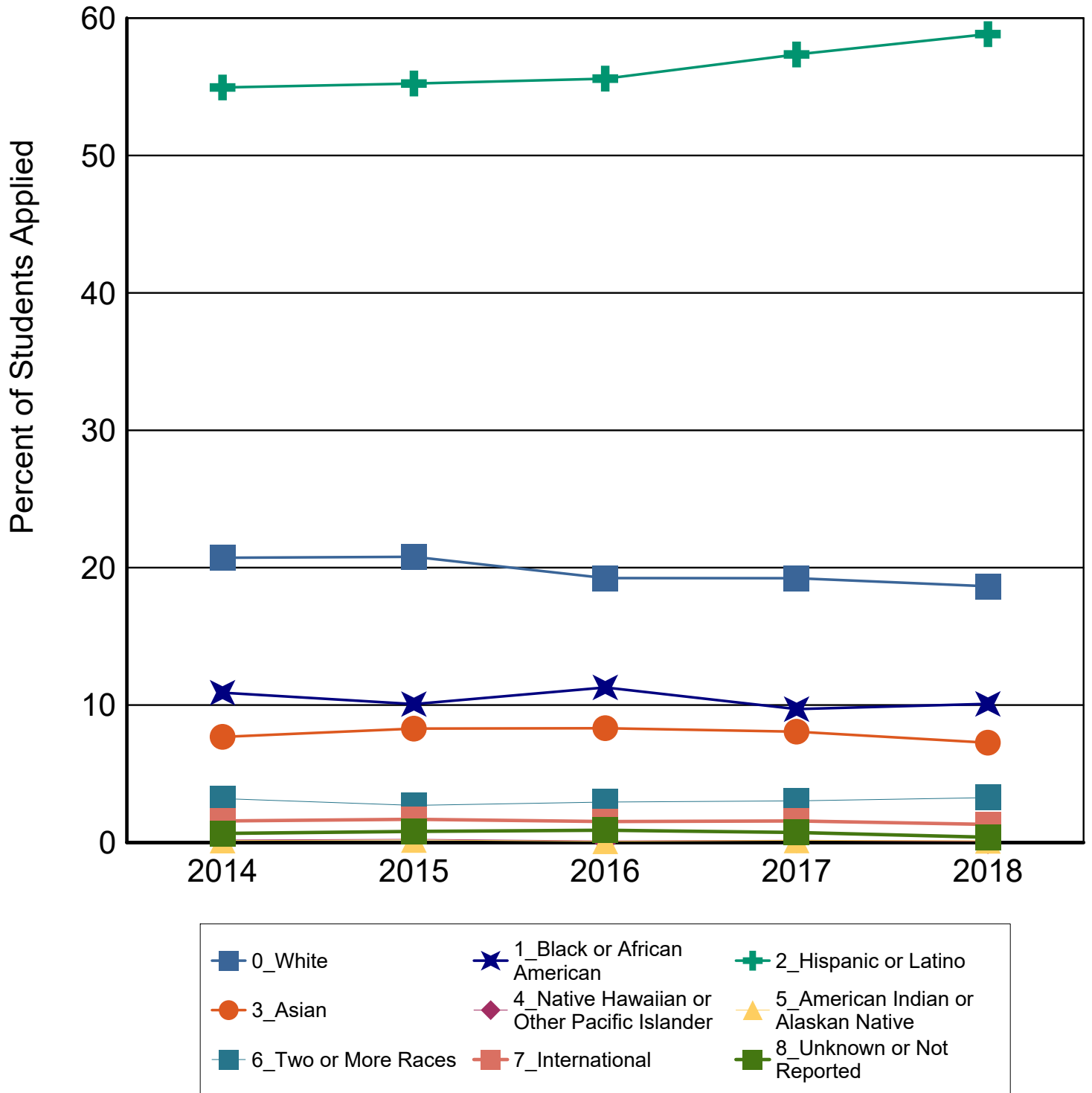
		2014	2015	2016	2017	2018
First Time	Applied	14,962	15,716	15,510	15,974	16,935
	Accepted	11,360	12,251	11,852	12,695	13,388
	% Accepted	76%	78%	76%	79%	79%
	Enrolled	5,066	4,979	4,384	5,035	4,972
	% Enrolled	45%	41%	37%	40%	37%

First Time Undergraduate Applied, Accepted, and Enrolled by Ethnicity

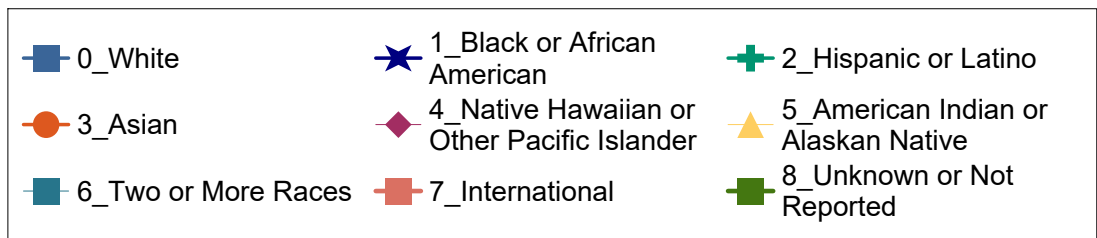
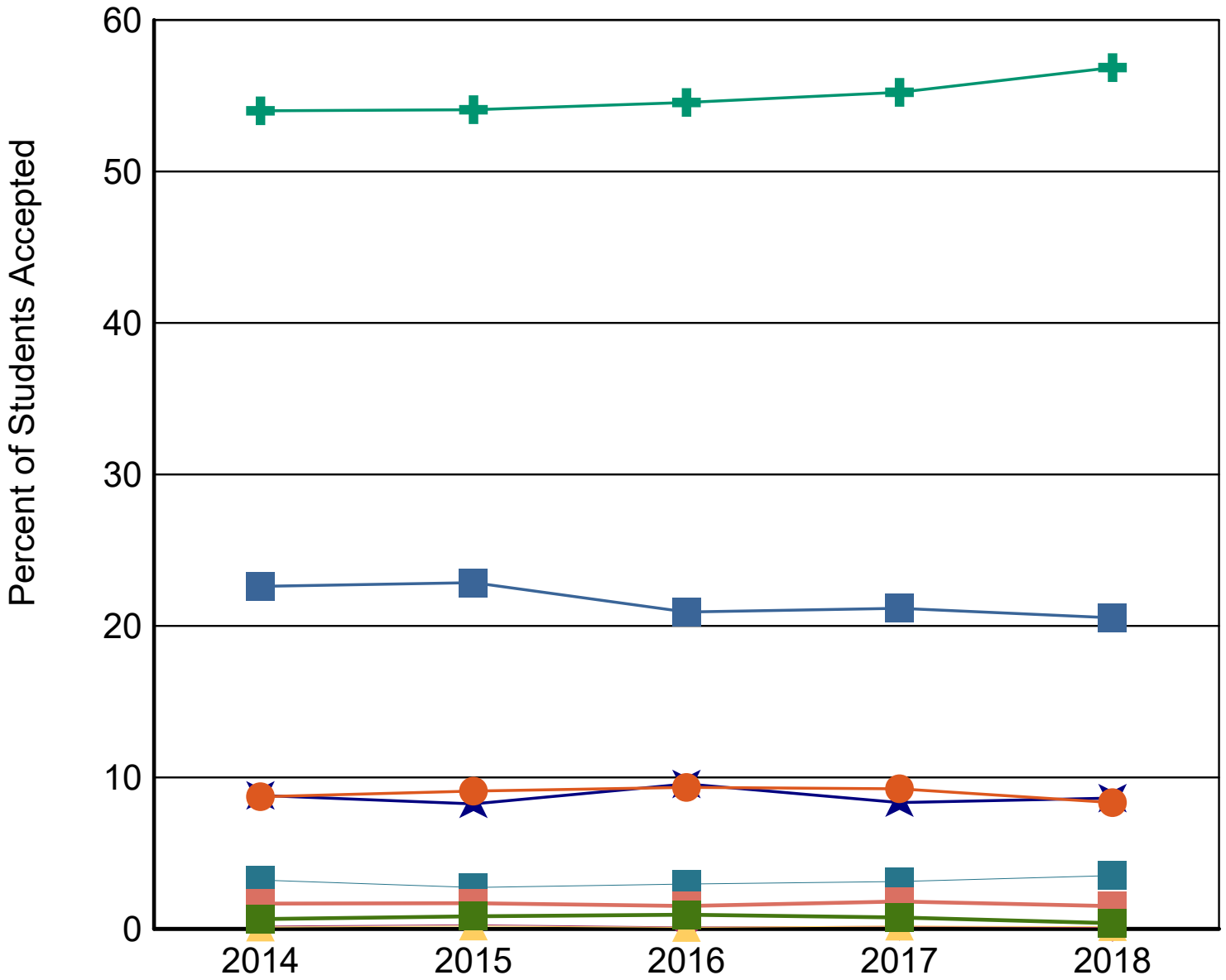
		2014	2015	2016	2017	2018
White	Applied	3,101	3,268	2,984	3,073	3,157
	Accepted	2,569	2,800	2,479	2,687	2,749
	% Accepted	83%	86%	83%	87%	87%
	Enrolled	1,156	1,149	953	1,088	1,018
	% Enrolled	45%	41%	38%	40%	37%
Black or African American	Applied	1,631	1,583	1,750	1,550	1,708
	Accepted	1,001	1,011	1,134	1,058	1,156
	% Accepted	61%	64%	65%	68%	68%
	Enrolled	521	491	450	481	450
	% Enrolled	52%	49%	40%	45%	39%
Hispanic or Latino	Applied	8,221	8,681	8,622	9,161	9,963
	Accepted	6,135	6,625	6,466	7,011	7,612
	% Accepted	75%	76%	75%	77%	76%
	Enrolled	2,665	2,689	2,362	2,752	2,840
	% Enrolled	43%	41%	37%	39%	37%
Asian	Applied	1,150	1,302	1,290	1,288	1,230
	Accepted	991	1,114	1,107	1,174	1,116
	% Accepted	86%	86%	86%	91%	91%
	Enrolled	401	371	341	386	381
	% Enrolled	40%	33%	31%	33%	34%
Native Hawaiian or Other Pacific Islander	Applied	27	37	18	26	16
	Accepted	21	33	14	21	13
	% Accepted	78%	89%	78%	81%	81%
	Enrolled	14	8	6	12	7
	% Enrolled	67%	24%	43%	57%	54%
American Indian or Alaskan Native	Applied	21	29	14	25	21
	Accepted	13	23	11	23	19
	% Accepted	62%	79%	79%	92%	90%
	Enrolled	8	7	7	11	12
	% Enrolled	62%	30%	64%	48%	63%
Two or More Races	Applied	478	424	457	484	553
	Accepted	366	335	351	397	471
	% Accepted	77%	79%	77%	82%	85%
	Enrolled	190	159	163	196	188
	% Enrolled	52%	47%	46%	49%	40%
International	Applied	235	265	237	251	223
	Accepted	190	208	179	229	201
	% Accepted	81%	78%	76%	91%	90%
	Enrolled	88	75	73	83	62
	% Enrolled	46%	36%	41%	36%	31%

		2014	2015	2016	2017	2018
Unknown or Not Reported	Applied	98	127	138	116	64
	Accepted	74	102	111	95	51
	% Accepted	76%	80%	80%	82%	80%
	Enrolled	23	30	29	26	14
	% Enrolled	31%	29%	26%	27%	27%
Total	Applied	14,962	15,716	15,510	15,974	16,935
	Accepted	11,360	12,251	11,852	12,695	13,388
	% Accepted	76%	78%	76%	79%	79%
	Enrolled	5,066	4,979	4,384	5,035	4,972
	% Enrolled	45%	41%	37%	40%	37%

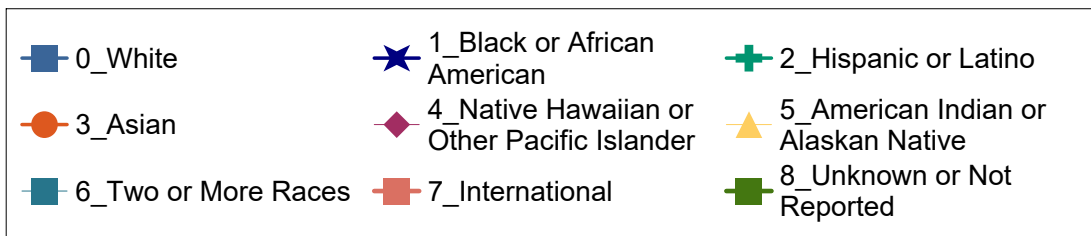
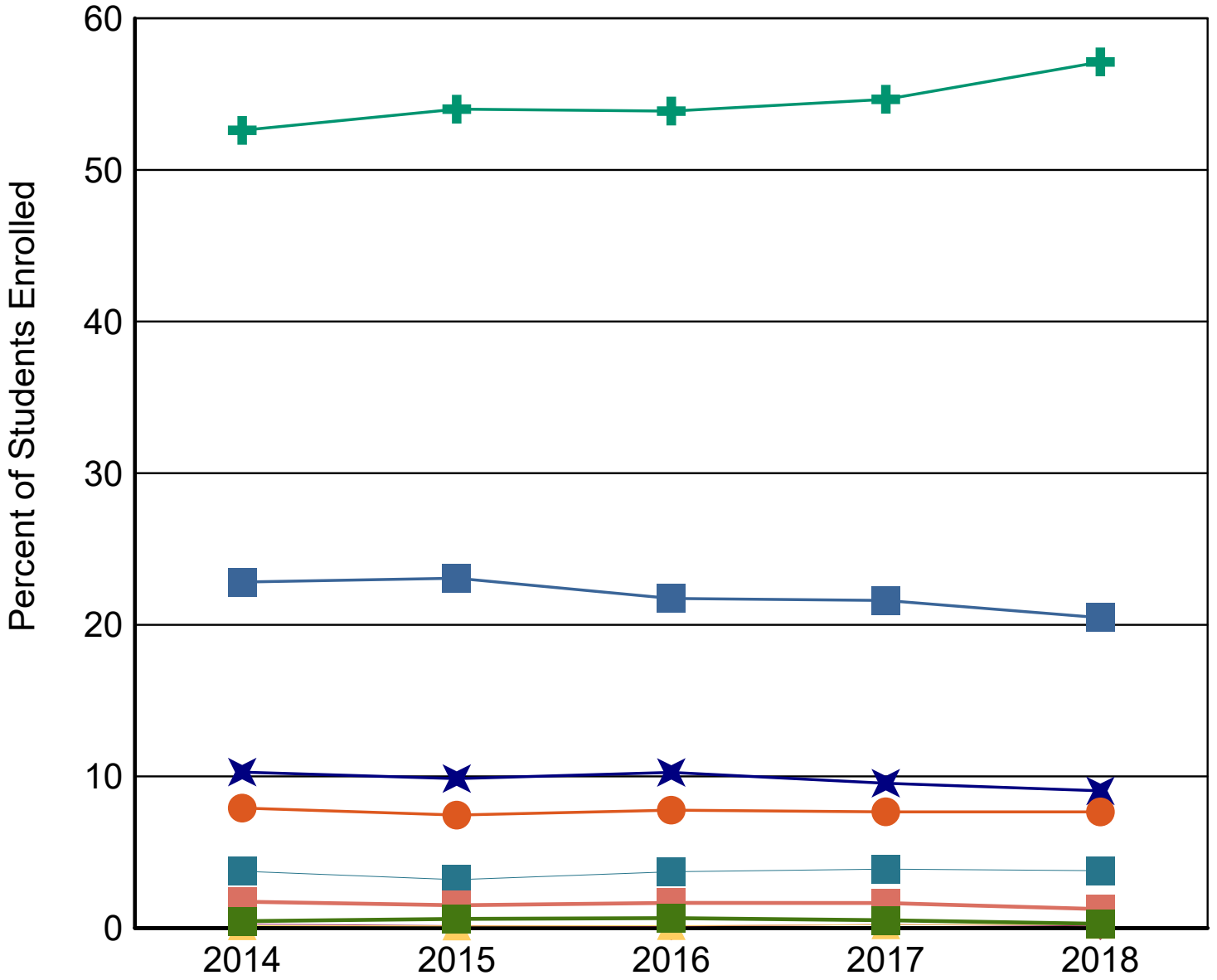
First Time Undergraduate Applied by Ethnicity



First Time Undergraduate Accepted by Ethnicity



First Time Undergraduate Enrolled by Ethnicity



First Time Undergraduate Applied, Accepted, and Enrolled by Gender

		2014	2015	2016	2017	2018
Female	Applied	8,154	8,708	8,569	8,623	9,481
	Accepted	6,237	6,826	6,636	6,995	7,657
	% Accepted	76%	78%	77%	81%	81%
	Enrolled	2,657	2,674	2,346	2,621	2,691
	% Enrolled	43%	39%	35%	37%	35%
Male	Applied	6,808	7,008	6,941	7,351	7,454
	Accepted	5,123	5,425	5,216	5,700	5,731
	% Accepted	75%	77%	75%	78%	77%
	Enrolled	2,409	2,305	2,038	2,414	2,281
	% Enrolled	47%	42%	39%	42%	40%
Total	Applied	14,962	15,716	15,510	15,974	16,935
	Accepted	11,360	12,251	11,852	12,695	13,388
	% Accepted	76%	78%	76%	79%	79%
	Enrolled	5,066	4,979	4,384	5,035	4,972
	% Enrolled	45%	41%	37%	40%	37%

First Time Undergraduate Applied, Accepted, and Enrolled by Economic Region

		2014	2015	2016	2017	2018
Alamo	Applied	4,792	4,742	4,702	5,083	5,336
	Accepted	3,676	3,678	3,624	3,965	4,275
	% Accepted	77%	78%	77%	78%	80%
	Enrolled	2,004	1,901	1,832	2,078	2,118
	% Enrolled	55%	52%	51%	52%	50%
Capital	Applied	1,531	1,587	1,567	1,643	1,827
	Accepted	1,146	1,240	1,196	1,344	1,430
	% Accepted	75%	78%	76%	82%	78%
	Enrolled	459	470	441	521	532
	% Enrolled	40%	38%	37%	39%	37%
Central	Applied	235	267	250	241	261
	Accepted	162	192	181	189	202
	% Accepted	69%	72%	72%	78%	77%
	Enrolled	86	110	69	86	80
	% Enrolled	53%	57%	38%	46%	40%
Gulf Coast	Applied	3,714	3,956	3,975	3,638	4,133
	Accepted	2,793	3,085	3,024	2,934	3,270
	% Accepted	75%	78%	76%	81%	79%
	Enrolled	1,140	1,101	918	998	1,000
	% Enrolled	41%	36%	30%	34%	31%
High Plains	Applied	37	44	33	47	39
	Accepted	33	40	26	35	31
	% Accepted	89%	91%	79%	74%	79%
	Enrolled	17	9	12	14	11
	% Enrolled	52%	23%	46%	40%	35%
Metroplex	Applied	739	997	1,068	1,061	850
	Accepted	540	792	810	876	656
	% Accepted	73%	79%	76%	83%	77%
	Enrolled	214	230	191	228	156
	% Enrolled	40%	29%	24%	26%	24%
Northwest Texas	Applied	33	52	45	30	42
	Accepted	26	41	34	24	32
	% Accepted	79%	79%	76%	80%	76%
	Enrolled	11	23	10	13	16
	% Enrolled	42%	56%	29%	54%	50%
Not in Texas	Applied	525	580	495	558	591
	Accepted	407	459	371	470	501
	% Accepted	78%	79%	75%	84%	85%
	Enrolled	174	154	153	154	158
	% Enrolled	43%	34%	41%	33%	32%
South Texas	Applied	2,720	2,887	2,854	3,146	3,377
	Accepted	2,098	2,258	2,180	2,427	2,611
	% Accepted	77%	78%	76%	77%	77%
	Enrolled	763	791	629	804	777
	% Enrolled	36%	35%	29%	33%	30%
Southeast Texas	Applied	58	75	72	75	83
	Accepted	45	62	60	67	72
	% Accepted	78%	83%	83%	89%	87%
	Enrolled	20	32	20	20	26
	% Enrolled	44%	52%	33%	30%	36%

		2014	2015	2016	2017	2018
Upper East Texas	Applied	38	63	46	47	39
	Accepted	32	54	37	43	33
	% Accepted	84%	86%	80%	91%	85%
	Enrolled	9	20	19	15	11
	% Enrolled	28%	37%	51%	35%	33%
Upper Rio Grande	Applied	438	310	287	295	257
	Accepted	319	226	218	237	197
	% Accepted	73%	73%	76%	80%	77%
	Enrolled	121	70	54	74	60
	% Enrolled	38%	31%	25%	31%	30%
West Texas	Applied	102	156	116	110	100
	Accepted	83	124	91	84	78
	% Accepted	81%	79%	78%	76%	78%
	Enrolled	48	68	36	30	27
	% Enrolled	58%	55%	40%	36%	35%
Total	Applied	14,962	15,716	15,510	15,974	16,935
	Accepted	11,360	12,251	11,852	12,695	13,388
	% Accepted	76%	78%	76%	79%	79%
	Enrolled	5,066	4,979	4,384	5,035	4,972
	% Enrolled	45%	41%	37%	40%	37%

The map of the regions below comes from the Texas Comptroller's website at <http://www.window.state.tx.us>. Note that a prior version of this map had an older region coding. A full listing of counties is on following page.



Texas Economic Regions

Alamo: Atascosa, Bandera, Bexar, Calhoun, Comal, De Witt, Frio, Gillespie, Goliad, Gonzales, Guadalupe, Jackson, Karnes, Kendall, Kerr, Lavaca, Medina, Victoria, Wilson

Capital: Bastrop, Blanco, Burnet, Caldwell, Fayette, Hays, Lee, Llano, Travis, Williamson

Central: Bell, Bosque, Brazos, Burleson, Coryell, Falls, Freestone, Grimes, Hamilton, Hill, Lampasas, Leon, Limestone, Madison, McLennan, Milam, Mills, Robertson, San Saba, Washington

Gulf Coast: Austin, Brazoria, Chambers, Colorado, Fort Bend, Galveston, Harris, Liberty, Matagorda, Montgomery, Walker, Waller, Wharton

High Plains: Armstrong, Bailey, Briscoe, Carson, Castro, Childress, Cochran, Collingsworth, Crosby, Dallam, Deaf Smith, Dickens, Donley, Floyd, Garza, Gray, Hale, Hall, Hansford, Hartley, Hemphill, Hockley, Hutchinson, King, Lamb, Lipscomb, Lubbock, Lynn, Moore, Motley, Ochiltree, Oldham, Parmer, Potter, Randall, Roberts, Sherman, Swisher, Terry, Wheeler, Yoakum

Metroplex: Collin, Cooke, Dallas, Denton, Ellis, Erath, Fannin, Grayson, Hood, Hunt, Johnson, Kaufman, Navarro, Palo, Pinto, Parker, Rockwall, Somervell, Tarrant, Wise

Northwest Texas: Archer, Baylor, Brown, Callahan, Clay, Coleman, Comanche, Cottle, Eastland, Fisher, Foard, Hardeman, Haskell, Jack, Jones, Kent, Knox, Mitchell, Montague, Nolan, Runnels, Scurry, Shackelford, Stephens, Stonewall, Taylor, Throckmorton, Wichita, Wilbarger, Young

South Texas: Aransas, Bee, Brooks, Cameron, Dimmit, Duval, Edwards, Hidalgo, Jim Hogg, Jim Wells, Kenedy, Kinney, Kleberg, La Salle, Live Oak, Maverick, McMullen, Nueces, Real, Refugio, San Patricio, Starr, Uvalde, Val Verde, Webb, Willacy, Zapata, Zavala

Southeast Texas: Angelina, Hardin, Houston, Jasper, Jefferson, Nacogdoches, Newton, Orange, Polk, Sabine, San Augustine, San Jacinto, Shelby, Trinity, Tyler

Upper East Texas: Anderson, Bowie, Camp, Cass, Cherokee, Delta, Franklin, Gregg, Harrison, Henderson, Hopkins, Lamar, Marion, Morris, Panola, Rains, Red River, Rusk, Smith, Titus, Upshur, Van Zandt, Wood

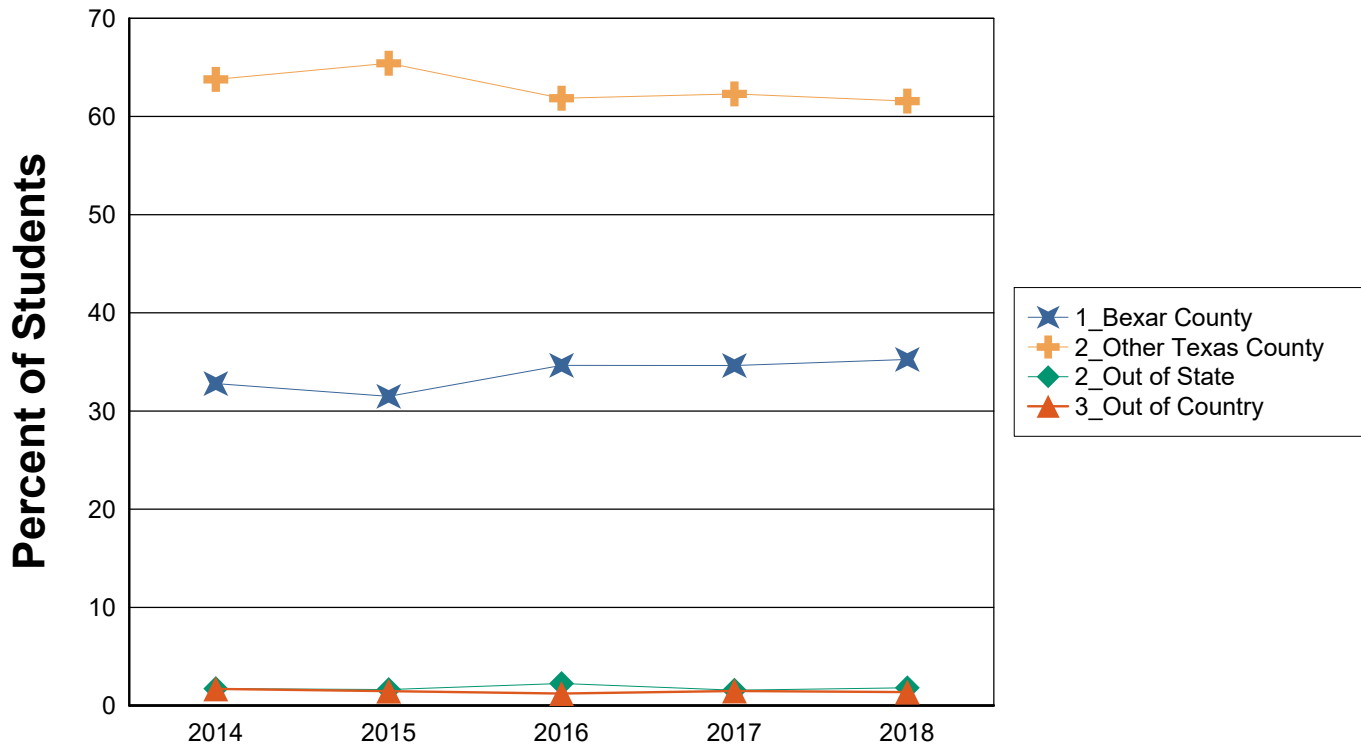
Upper Rio Grande: Brewster, Culberson, El Paso, Hudspeth, Jeff Davis, Presidio

West Texas: Andrews, Borden, Coke, Concho, Crane, Crockett, Dawson, Ector, Gaines, Glasscock, Howard, Irion, Kimble, Loving, Martin, Mason, McCulloch, Menard, Midland, Pecos, Reagan, Reeves, Schleicher, Sterling, Sutton, Terrell, Tom Green, Upton, Ward, Winkler

First Time Undergraduate Applied, Accepted, and Enrolled by Residence Category

		2014	2015	2016	2017	2018
Bexar County	Applied	3,985	3,838	3,879	4,209	4,361
	Accepted	3,034	2,965	2,975	3,266	3,475
	% Accepted	76%	77%	77%	78%	80%
	Enrolled	1,661	1,568	1,519	1,744	1,753
	% Enrolled	55%	53%	51%	53%	50%
Other Texas County	Applied	10,452	11,298	11,136	11,207	11,983
	Accepted	7,919	8,827	8,506	8,959	9,412
	% Accepted	76%	78%	76%	80%	79%
	Enrolled	3,231	3,257	2,712	3,137	3,061
	% Enrolled	41%	37%	32%	35%	33%
Out of State	Applied	321	308	334	325	357
	Accepted	240	248	254	260	293
	% Accepted	75%	81%	76%	80%	82%
	Enrolled	88	81	99	79	90
	% Enrolled	37%	33%	39%	30%	31%
Out of Country	Applied	204	272	161	233	234
	Accepted	167	211	117	210	208
	% Accepted	82%	78%	73%	90%	89%
	Enrolled	86	73	54	75	68
	% Enrolled	51%	35%	46%	36%	33%
Total	Applied	14,962	15,716	15,510	15,974	16,935
	Accepted	11,360	12,251	11,852	12,695	13,388
	% Applied	76%	78%	76%	79%	79%
	Enrolled	5,066	4,979	4,384	5,035	4,972
	% Enrolled	45%	41%	37%	40%	37%

First Time Undergraduate Applied, Accepted, and Enrolled by Residence Category



First Time Undergraduate Applied, Accepted, and Enrolled by Admission Decision

		2014	2015	2016	2017	2018
Accepted and Ranked in Top 10% of High School	Applied	2,355	2,509	2,473	2,538	2,709
	Accepted	2,355	2,509	2,473	2,538	2,709
	% Accepted	100%	100%	100%	100%	100%
	Enrolled	873	861	692	774	809
	% Enrolled	37%	34%	28%	30%	30%
Accepted and Ranked in 11 - 25% of High School	Applied	4,333	4,441	4,388	4,369	4,490
	Accepted	4,333	4,441	4,388	4,369	4,490
	% Accepted	100%	100%	100%	100%	100%
	Enrolled	1,998	1,928	1,663	1,778	1,720
	% Enrolled	46%	43%	38%	41%	38%
Accepted on Provisional Basis	Applied	379	0	0	0	0
	Accepted	379	0	0	0	0
	% Accepted	100%	0%	0%	0%	0%
	Enrolled	264	0	0	0	0
	% Enrolled	70%				
Accepted on Other Criteria	Applied	4,293	5,301	4,991	5,788	6,189
	Accepted	4,293	5,301	4,991	5,788	6,189
	% Accepted	100%	100%	100%	100%	100%
	Enrolled	1,928	2,188	2,029	2,483	2,443
	% Enrolled	45%	41%	41%	43%	39%
Denied	Applied	3,345	3,165	3,376	3,279	3,547
	Accepted	0	0	0	0	0
	% Accepted	0%	0%	0%	0%	0%
	Enrolled	0	0	0	0	0
	% Enrolled					
Withdrew Application	Applied	257	300	282	0	0
	Accepted	0	0	0	0	0
	% Accepted	0%	0%	0%	0%	0%
	Enrolled	3	2	0	0	0
	% Enrolled					
Total	Applied	14,962	15,716	15,510	15,974	16,935
	Accepted	11,360	12,251	11,852	12,695	13,388
	% Accepted	76	78	76	79	79
	Enrolled	5,066	4,979	4,384	5,035	4,972
	% Enrolled	45	41	37	40	37

Transfer Undergraduate Student Applications

The Applied, Accepted, and Enrolled information comes from the Coordinating Board Admissions file (CBM00B), this file contains only the Summer and Fall applications for each year. Only students who have never applied at the level are included in this information. Enrollment is based on the fall semester, in prior years it had been based on the student applied for. Note that although many new students enter UTSA each year only students who are first time students seeking a degree at UTSA are included in the Cohort for graduation and retention information. For more information on this topic please contact the Office of Institutional Research at (210) 458-4706.

Transfer Undergraduate Applied, Accepted, and Enrolled

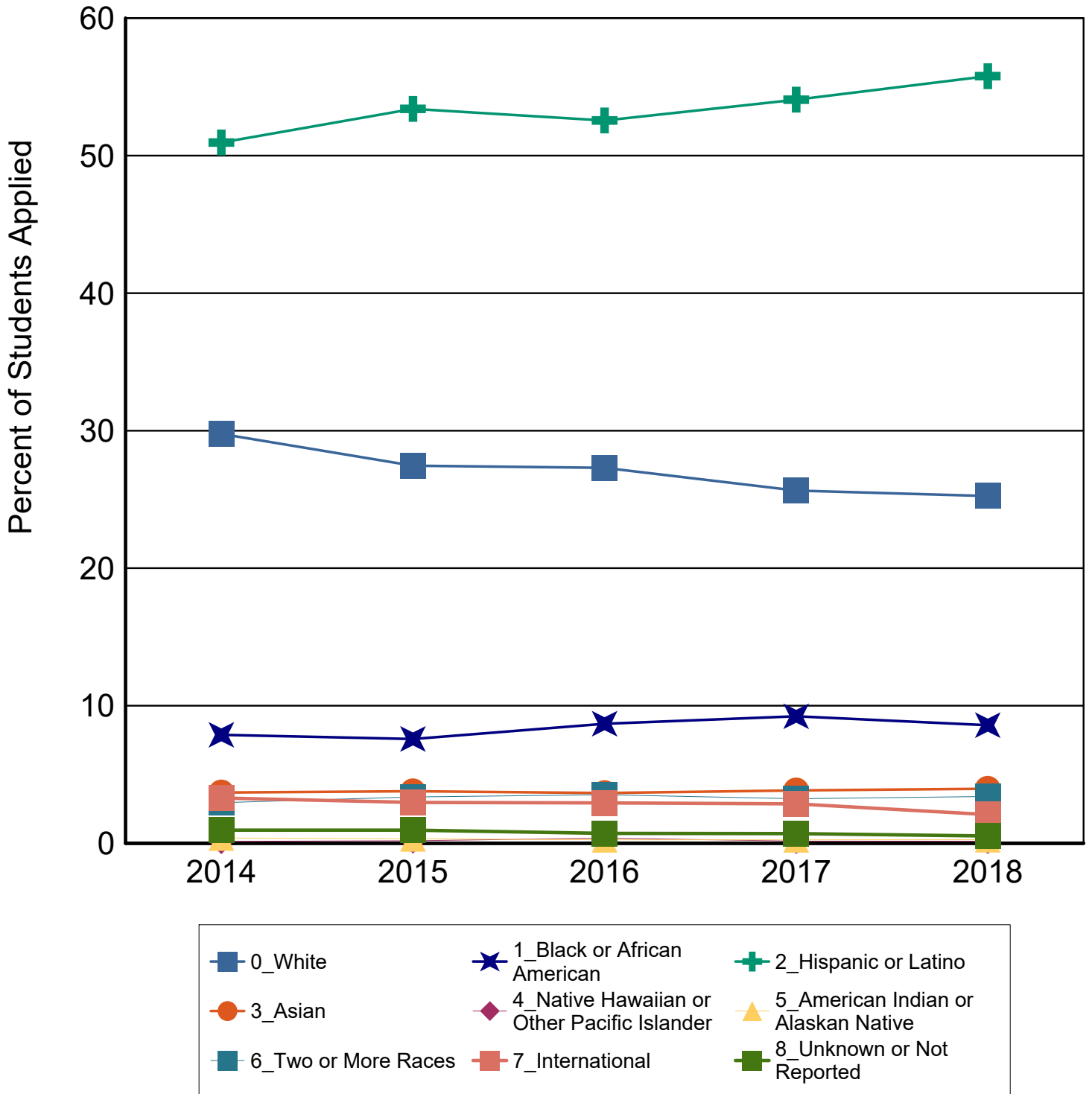
		2014	2015	2016	2017	2018
Transfer	Applied	4,200	4,313	4,327	5,101	5,323
	Accepted	3,371	3,501	3,761	4,394	4,670
	% Accepted	80%	81%	87%	86%	88%
	Enrolled	2,266	2,370	2,590	2,898	3,166
	% Enrolled	67%	68%	69%	66%	68%

Transfer Undergraduate Applied, Accepted, and Enrolled by Ethnicity

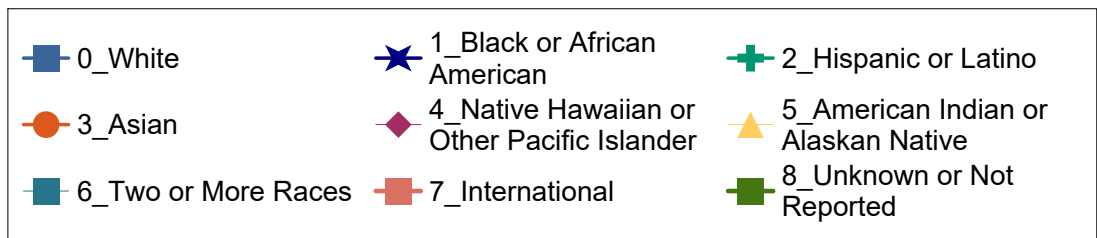
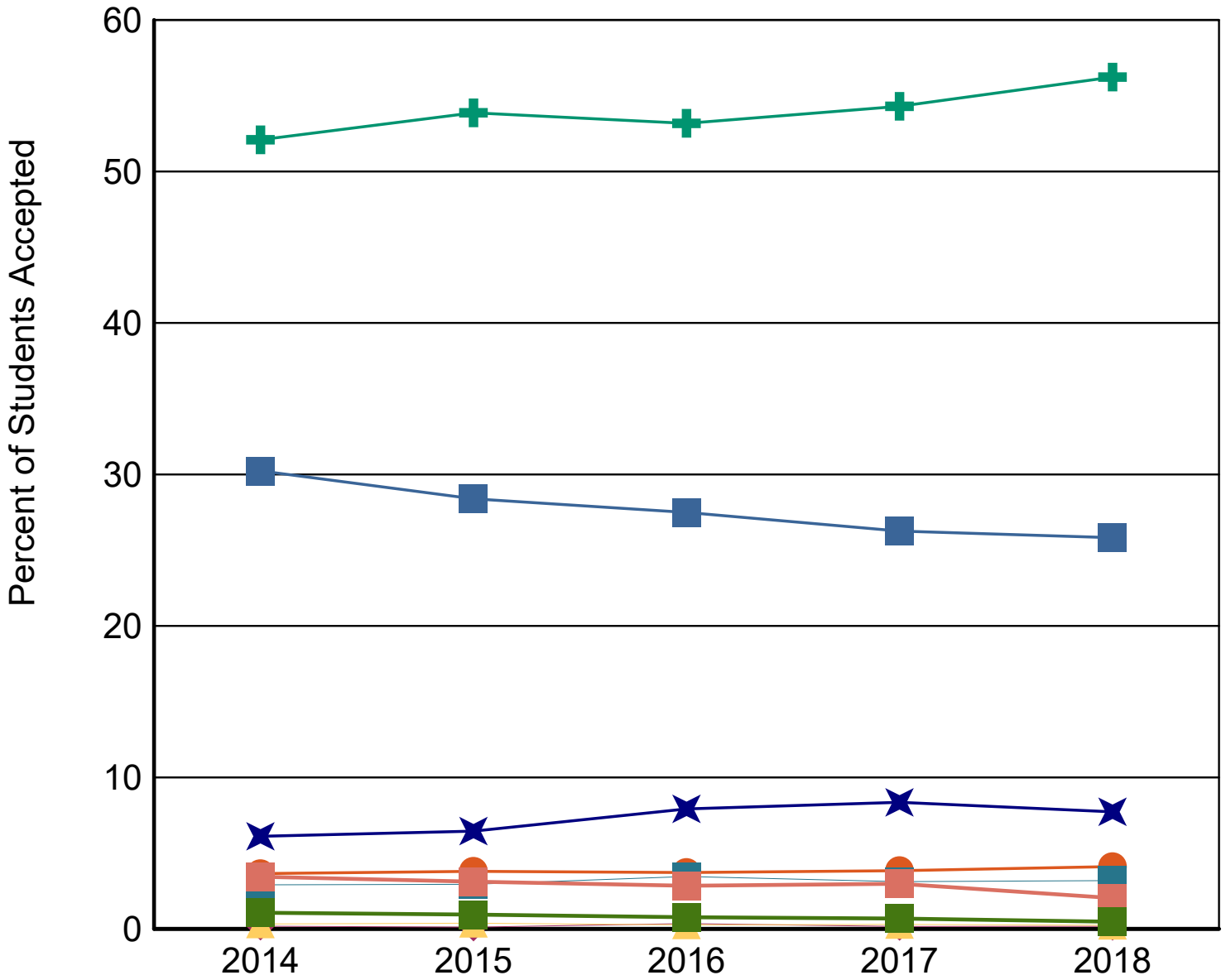
		2014	2015	2016	2017	2018
White	Applied	1,250	1,184	1,181	1,308	1,344
	Accepted	1,019	994	1,034	1,154	1,206
	% Accepted	82%	84%	88%	88%	90%
	Enrolled	665	646	692	727	828
	% Enrolled	65%	65%	67%	63%	69%
Black or African American	Applied	331	327	376	471	457
	Accepted	206	226	298	367	361
	% Accepted	62%	69%	79%	78%	79%
	Enrolled	122	150	210	240	219
	% Enrolled	59%	66%	70%	65%	61%
Hispanic or Latino	Applied	2,140	2,303	2,274	2,758	2,969
	Accepted	1,756	1,886	2,000	2,386	2,626
	% Accepted	82%	82%	88%	87%	88%
	Enrolled	1,236	1,351	1,449	1,646	1,826
	% Enrolled	70%	72%	72%	69%	70%
Asian	Applied	155	163	158	196	211
	Accepted	123	133	140	169	192
	% Accepted	79%	82%	89%	86%	91%
	Enrolled	80	80	75	101	133
	% Enrolled	65%	60%	54%	60%	69%
Native Hawaiian or Other Pacific Islander	Applied	6	8	16	8	8
	Accepted	6	4	13	7	8
	% Accepted	100%	50%	81%	88%	100%
	Enrolled	5	4	11	4	3
	% Enrolled	83%	100%	85%	57%	38%
American Indian or Alaskan Native	Applied	16	14	11	13	14
	Accepted	11	13	10	13	11
	% Accepted	69%	93%	91%	100%	79%
	Enrolled	9	7	8	9	4
	% Enrolled	82%	54%	80%	69%	36%
Two or More Races	Applied	124	145	153	165	181
	Accepted	98	103	130	137	149
	% Accepted	79%	71%	85%	83%	82%
	Enrolled	69	65	80	93	98
	% Enrolled	70%	63%	62%	68%	66%
International	Applied	138	128	127	146	111
	Accepted	116	109	107	131	95
	% Accepted	84%	85%	84%	90%	86%
	Enrolled	59	46	49	57	42
	% Enrolled	51%	42%	46%	44%	44%

		2014	2015	2016	2017	2018
Unknown or Not Reported	Applied	40	41	31	36	28
	Accepted	36	33	29	30	22
	% Accepted	90%	80%	94%	83%	79%
	Enrolled	21	21	16	21	13
	% Enrolled	58%	64%	55%	70%	59%
Total	Applied	4,200	4,313	4,327	5,101	5,323
	Accepted	3,371	3,501	3,761	4,394	4,670
	% Accepted	80%	81%	87%	86%	88%
	Enrolled	2,266	2,370	2,590	2,898	3,166
	% Enrolled	67%	68%	69%	66%	68%

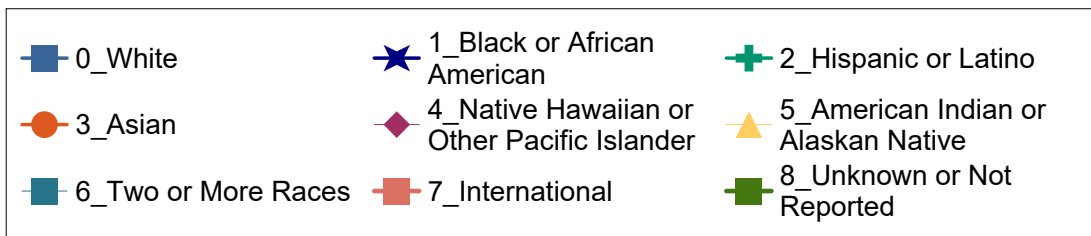
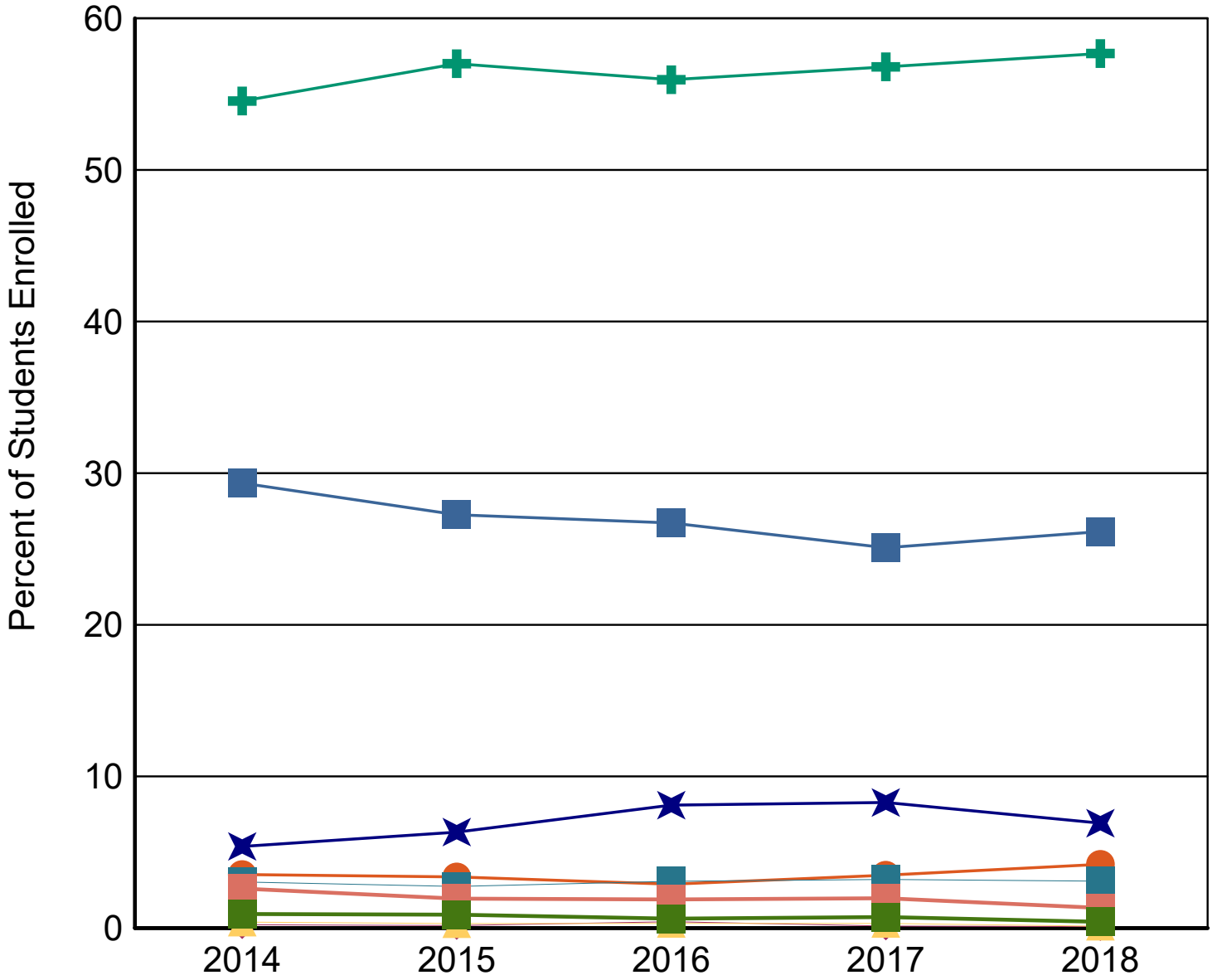
Transfer Undergraduate Applied by Ethnicity



Transfer Undergraduate Accepted by Ethnicity



Transfer Undergraduate Enrolled by Ethnicity



Transfer Undergraduate Applied, Accepted, and Enrolled by Gender

		2014	2015	2016	2017	2018
Female	Applied	2,058	2,086	2,035	2,418	2,555
	Accepted	1,697	1,732	1,818	2,123	2,307
	% Accepted	82%	83%	89%	88%	90%
	Enrolled	1,113	1,146	1,243	1,396	1,524
	% Enrolled	66%	66%	68%	66%	66%
Male	Applied	2,142	2,227	2,292	2,683	2,768
	Accepted	1,674	1,769	1,943	2,271	2,363
	% Accepted	78%	79%	85%	85%	85%
	Enrolled	1,153	1,224	1,347	1,502	1,642
	% Enrolled	69%	69%	69%	66%	69%
Total	Applied	4,200	4,313	4,327	5,101	5,323
	Accepted	3,371	3,501	3,761	4,394	4,670
	% Accepted	80%	81%	87%	86%	88%
	Enrolled	2,266	2,370	2,590	2,898	3,166
	% Enrolled	67%	68%	69%	66%	68%

Transfer Undergraduate Applied, Accepted, and Enrolled by Economic Region

		2014	2015	2016	2017	2018
Alamo	Applied	2,511	2,509	2,503	2,953	3,160
	Accepted	2,070	2,093	2,218	2,584	2,791
	% Accepted	82%	83%	89%	88%	88%
	Enrolled	1,512	1,583	1,663	1,920	2,070
	% Enrolled	73%	76%	75%	74%	74%
Capital	Applied	175	194	239	268	307
	Accepted	138	162	208	222	271
	% Accepted	79%	84%	87%	83%	88%
	Enrolled	75	78	129	118	155
	% Enrolled	54%	48%	62%	53%	57%
Central	Applied	71	74	96	110	69
	Accepted	56	60	80	95	61
	% Accepted	79%	81%	83%	86%	88%
	Enrolled	37	29	47	54	36
	% Enrolled	66%	48%	59%	57%	59%
Gulf Coast	Applied	380	413	396	476	469
	Accepted	274	303	330	398	397
	% Accepted	72%	73%	83%	84%	85%
	Enrolled	153	166	189	192	204
	% Enrolled	56%	55%	57%	48%	51%
High Plains	Applied	17	17	18	23	17
	Accepted	16	12	16	17	15
	% Accepted	94%	71%	89%	74%	88%
	Enrolled	9	8	7	10	8
	% Enrolled	56%	67%	44%	59%	53%
Metroplex	Applied	133	109	122	175	171
	Accepted	97	82	103	153	146
	% Accepted	73%	75%	84%	87%	85%
	Enrolled	55	36	59	78	78
	% Enrolled	57%	44%	57%	51%	53%
Northwest Texas	Applied	20	8	17	14	16
	Accepted	16	6	13	13	15
	% Accepted	80%	75%	76%	93%	94%
	Enrolled	11	1	7	5	7
	% Enrolled	69%	17%	54%	38%	47%
Not in Texas	Applied	310	287	273	341	336
	Accepted	247	243	228	299	291
	% Accepted	80%	85%	84%	88%	87%
	Enrolled	127	109	106	131	147
	% Enrolled	51%	45%	46%	44%	51%
South Texas	Applied	450	536	527	588	631
	Accepted	352	417	452	486	557
	% Accepted	78%	78%	86%	83%	88%
	Enrolled	227	289	312	321	383
	% Enrolled	64%	69%	69%	66%	69%
Southeast Texas	Applied	6	15	11	12	12
	Accepted	5	11	8	11	12
	% Accepted	83%	73%	73%	92%	100%
	Enrolled	5	8	5	7	6
	% Enrolled	100%	73%	63%	64%	50%

		2014	2015	2016	2017	2018
Upper East Texas	Applied	15	20	15	16	17
	Accepted	15	15	14	14	14
	% Accepted	100%	75%	93%	88%	82%
	Enrolled	9	7	9	7	9
	% Enrolled	60%	47%	64%	50%	64%
Upper Rio Grande	Applied	70	66	66	75	82
	Accepted	54	49	53	62	72
	% Accepted	77%	74%	80%	83%	88%
	Enrolled	27	29	34	34	47
	% Enrolled	50%	59%	64%	55%	65%
West Texas	Applied	42	65	44	50	36
	Accepted	31	48	38	40	28
	% Accepted	74%	74%	86%	80%	78%
	Enrolled	19	27	23	21	16
	% Enrolled	61%	56%	61%	53%	57%
Total	Applied	4,200	4,313	4,327	5,101	5,323
	Accepted	3,371	3,501	3,761	4,394	4,670
	% Accepted	80%	81%	87%	86%	88%
	Enrolled	2,266	2,370	2,590	2,898	3,166
	% Enrolled	67%	68%	69%	66%	68%

The map of the regions below comes from the Texas Comptroller's website at <http://www.window.state.tx.us>. Note that a prior version of this map had an older region coding. A full listing of counties is on following page.



Texas Economic Regions

Alamo: Atascosa, Bandera, Bexar, Calhoun, Comal, De Witt, Frio, Gillespie, Goliad, Gonzales, Guadalupe, Jackson, Karnes, Kendall, Kerr, Lavaca, Medina, Victoria, Wilson

Capital: Bastrop, Blanco, Burnet, Caldwell, Fayette, Hays, Lee, Llano, Travis, Williamson

Central: Bell, Bosque, Brazos, Burleson, Coryell, Falls, Freestone, Grimes, Hamilton, Hill, Lampasas, Leon, Limestone, Madison, McLennan, Milam, Mills, Robertson, San Saba, Washington

Gulf Coast: Austin, Brazoria, Chambers, Colorado, Fort Bend, Galveston, Harris, Liberty, Matagorda, Montgomery, Walker, Waller, Wharton

High Plains: Armstrong, Bailey, Briscoe, Carson, Castro, Childress, Cochran, Collingsworth Crosby, Dallam, Deaf Smith, Dickens, Donley, Floyd, Garza, Gray, Hale, Hall, Hansford, Hartley, Hemphill, Hockley, Hutchinson, King, Lamb, Lipscomb, Lubbock, Lynn, Moore, Motley, Ochiltree, Oldham, Parmer, Potter, Randall, Roberts, Sherman, Swisher, Terry, Wheeler, Yoakum

Metroplex: Collin, Cooke, Dallas, Denton, Ellis, Erath, Fannin, Grayson, Hood, Hunt, Johnson, Kaufman, Navarro, Palo, Pinto, Parker, Rockwall, Somervell, Tarrant, Wise

Northwest Texas: Archer, Baylor, Brown, Callahan, Clay, Coleman, Comanche, Cottle, Eastland, Fisher, Foard, Hardeman, Haskell, Jack, Jones, Kent, Knox, Mitchell, Montague, Nolan, Runnels, Scurry, Shackelford, Stephens, Stonewall, Taylor, Throckmorton, Wichita, Wilbarger, Young

South Texas: Aransas, Bee, Brooks, Cameron, Dimmit, Duval, Edwards, Hidalgo, Jim Hogg, Jim Wells, Kenedy, Kinney, Kleberg, La Salle, Live Oak, Maverick, McMullen, Nueces, Real, Refugio, San Patricio, Starr, Uvalde, Val Verde, Webb, Willacy, Zapata, Zavala

Southeast Texas: Angelina, Hardin, Houston, Jasper, Jefferson, Nacogdoches, Newton, Orange, Polk, Sabine, San Augustine, San Jacinto, Shelby, Trinity, Tyler

Upper East Texas: Anderson, Bowie, Camp, Cass, Cherokee, Delta, Franklin, Gregg, Harrison, Henderson, Hopkins, Lamar, Marion, Morris, Panola, Rains, Red River, Rusk, Smith, Titus, Upshur, Van Zandt, Wood

Upper Rio Grande: Brewster, Culberson, El Paso, Hudspeth, Jeff Davis, Presidio

West Texas: Andrews, Borden, Coke, Concho, Crane, Crockett, Dawson, Ector, Gaines, Glasscock, Howard, Irion, Kimble, Loving, Martin, Mason, McCulloch, Menard, Midland, Pecos, Reagan, Reeves, Schleicher, Sterling, Sutton, Terrell, Tom Green, Upton, Ward, Winkler

Transfer Undergraduate Applied, Accepted, and Enrolled by Residence Category

		2014	2015	2016	2017	2018
Bexar County	Applied	2,206	2,190	2,146	2,565	2,715
	Accepted	1,834	1,849	1,904	2,251	2,401
	% Accepted	83%	84%	89%	88%	88%
	Enrolled	1,356	1,408	1,447	1,665	1,794
	% Enrolled	74%	76%	76%	74%	75%
Other Texas County	Applied	1,684	1,836	1,908	2,195	2,272
	Accepted	1,290	1,409	1,629	1,844	1,978
	% Accepted	77%	77%	85%	84%	87%
	Enrolled	783	853	1,037	1,102	1,225
	% Enrolled	61%	61%	64%	60%	62%
Out of State	Applied	187	173	196	219	231
	Accepted	142	147	160	191	201
	% Accepted	76%	85%	82%	87%	87%
	Enrolled	69	68	68	80	105
	% Enrolled	49%	46%	43%	42%	52%
Out of Country	Applied	123	114	77	122	105
	Accepted	105	96	68	108	90
	% Accepted	85%	84%	88%	89%	86%
	Enrolled	58	41	38	51	42
	% Enrolled	55%	43%	56%	47%	47%
Total	Applied	4,200	4,313	4,327	5,101	5,323
	Accepted	3,371	3,501	3,761	4,394	4,670
	% Applied	80%	81%	87%	86%	88%
	Enrolled	2,266	2,370	2,590	2,898	3,166
	% Enrolled	67%	68%	69%	66%	68%

Transfer Undergraduate Applied, Accepted, and Enrolled by Residence Category

