



Course Enrollment

The UTSA Fact Book
Office of Institutional Research and Analysis
Fall 2022

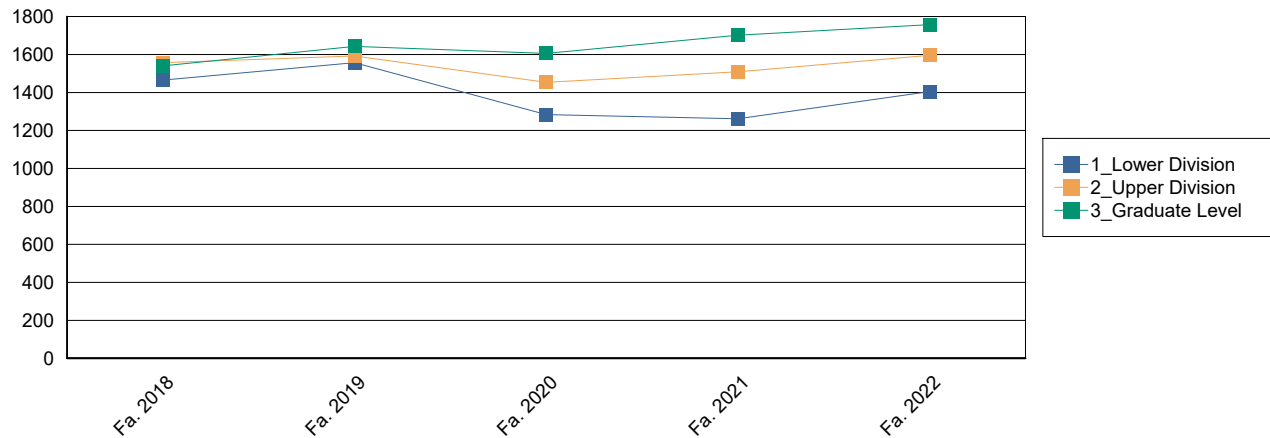
Courses Taught at UTSA

The courses taught information comes from the Coordinating Board Course Report (CBM004) which is certified by the state. The Course level comes from the Course Inventory. For each section the number of courses offered, the number of students enrolled, and the number of semester credit hours generated are included. The section on college comes from the subject of the course based on the course inventory.

Number Of Courses by Level and Course Type (Fall Semesters)

| | | Fa. 2018 | Fa. 2019 | Fa. 2020 | Fa. 2021 | Fa. 2022 |
|-----------------------|-------------------------------|---------------|---------------|---------------|---------------|---------------|
| Lower Division | Organized Courses | 1,192 81% | 1,285 83% | 1,040 81% | 1,039 82% | 1,107 79% |
| | Laboratory Courses | 204 14% | 208 13% | 178 14% | 162 13% | 234 17% |
| | Individual Instruction | 69 5% | 64 4% | 66 5% | 61 5% | 64 5% |
| | Total | 1,465 100% | 1,557 100% | 1,284 100% | 1,262 100% | 1,405 100% |
| Upper Division | Organized Courses | 1,110 71% | 1,169 73% | 1,153 79% | 1,186 79% | 1,234 77% |
| | Laboratory Courses | 143 9% | 141 9% | 100 7% | 105 7% | 117 7% |
| | Individual Instruction | 304 20% | 282 18% | 201 14% | 218 14% | 245 15% |
| | Total | 1,557 100% | 1,592 100% | 1,454 100% | 1,509 100% | 1,596 100% |
| Graduate Level | Organized Courses | 562 36% | 567 35% | 583 36% | 604 35% | 620 35% |
| | Laboratory Courses | 21 1% | 21 1% | 22 1% | 21 1% | 21 1% |
| | Individual Instruction | 957 62% | 1,055 64% | 1,001 62% | 1,077 63% | 1,116 64% |
| | Total | 1,540 100% | 1,643 100% | 1,606 100% | 1,702 100% | 1,757 100% |
| Total | | 4,562 100% | 4,792 100% | 4,344 100% | 4,473 100% | 4,758 100% |

Courses by Level



Enrollment in Courses Offered by Level and Course Type (Fall Semesters)

| | | Fa. 2018 | Fa. 2019 | Fa. 2020 | Fa. 2021 | Fa. 2022 |
|-----------------------|-------------------------------|-----------------|-----------------|-----------------|-----------------|-----------------|
| Lower Division | Organized Courses | 65,322 94% | 63,499 94% | 67,055 94% | 65,068 95% | 66,028 94% |
| | Laboratory Courses | 4,009 6% | 4,066 6% | 4,081 6% | 3,563 5% | 4,396 6% |
| | Individual Instruction | 184 0% | 215 0% | 194 0% | 180 0% | 188 0% |
| | Total | 69,515 100% | 67,780 100% | 71,330 100% | 68,811 100% | 70,612 100% |
| Upper Division | Organized Courses | 47,378 93% | 49,497 94% | 51,570 95% | 49,750 95% | 47,513 95% |
| | Laboratory Courses | 2,347 5% | 2,288 4% | 1,932 4% | 1,854 4% | 1,609 3% |
| | Individual Instruction | 1,135 2% | 993 2% | 553 1% | 715 1% | 807 2% |
| | Total | 50,860 100% | 52,778 100% | 54,055 100% | 52,319 100% | 49,929 100% |
| Graduate Level | Organized Courses | 8,302 81% | 8,723 81% | 9,949 84% | 9,823 83% | 8,941 81% |
| | Laboratory Courses | 221 2% | 220 2% | 235 2% | 256 2% | 240 2% |
| | Individual Instruction | 1,759 17% | 1,818 17% | 1,671 14% | 1,797 15% | 1,806 16% |
| | Total | 10,282 100% | 10,761 100% | 11,855 100% | 11,876 100% | 10,987 100% |
| Total | | 130,657 100% | 131,319 100% | 137,240 100% | 133,006 100% | 131,528 100% |

Semester Credit Hours (SCH) in Courses Offered by Level and Course Type (Fall Semesters)

| | | Fa. 2018 | Fa. 2019 | Fa. 2020 | Fa. 2021 | Fa. 2022 |
|-----------------------|-------------------------------|-----------------|-----------------|-----------------|-----------------|-----------------|
| Lower Division | Organized Courses | 194,119 97% | 188,477 96% | 201,098 97% | 195,158 97% | 195,724 96% |
| | Laboratory Courses | 6,178 3% | 6,454 3% | 6,819 3% | 6,218 3% | 7,078 3% |
| | Individual Instruction | 354 0% | 441 0% | 374 0% | 342 0% | 404 0% |
| | Total | 200,651 100% | 195,372 100% | 208,291 100% | 201,718 100% | 203,206 100% |
| Upper Division | Organized Courses | 139,315 94% | 145,365 95% | 153,250 96% | 147,973 95% | 140,851 95% |
| | Laboratory Courses | 4,437 3% | 4,572 3% | 4,219 3% | 4,531 3% | 4,254 3% |
| | Individual Instruction | 4,358 3% | 3,869 3% | 2,186 1% | 2,448 2% | 2,868 2% |
| | Total | 148,110 100% | 153,806 100% | 159,655 100% | 154,952 100% | 147,973 100% |
| Graduate Level | Organized Courses | 23,950 81% | 24,952 81% | 28,653 84% | 28,349 83% | 26,164 82% |
| | Laboratory Courses | 783 3% | 729 2% | 879 3% | 940 3% | 917 3% |
| | Individual Instruction | 4,860 16% | 5,079 17% | 4,682 14% | 4,994 15% | 4,933 15% |
| | Total | 29,593 100% | 30,760 100% | 34,214 100% | 34,283 100% | 32,014 100% |
| Total | | 378,354 100% | 379,938 100% | 402,160 100% | 390,953 100% | 383,193 100% |

Number Of Courses by Level and Tenure Status (Fall Semesters)

| | | Fa. 2018 | Fa. 2019 | Fa. 2020 | Fa. 2021 | Fa. 2022 |
|-----------------------|----------------------------|---------------|---------------|---------------|---------------|---------------|
| Lower Division | Tenured | 154 11% | 132 8% | 162 13% | 135 11% | 122 9% |
| | Tenure Track | 59 4% | 44 3% | 56 4% | 56 4% | 49 3% |
| | Not on Tenure Track | 1,252 85% | 1,381 89% | 1,066 83% | 1,071 85% | 1,234 88% |
| | Total | 1,465 100% | 1,557 100% | 1,284 100% | 1,262 100% | 1,405 100% |
| Upper Division | Tenured | 450 29% | 468 29% | 437 30% | 464 31% | 473 30% |
| | Tenure Track | 216 14% | 175 11% | 178 12% | 162 11% | 180 11% |
| | Not on Tenure Track | 891 57% | 949 60% | 839 58% | 883 59% | 943 59% |
| | Total | 1,557 100% | 1,592 100% | 1,454 100% | 1,509 100% | 1,596 100% |
| Graduate Level | Tenured | 933 61% | 1,021 62% | 1,018 63% | 1,066 63% | 1,106 63% |
| | Tenure Track | 353 23% | 341 21% | 334 21% | 345 20% | 330 19% |
| | Not on Tenure Track | 254 16% | 281 17% | 254 16% | 291 17% | 321 18% |
| | Total | 1,540 100% | 1,643 100% | 1,606 100% | 1,702 100% | 1,757 100% |
| Total | | 4,562 100% | 4,792 100% | 4,344 100% | 4,473 100% | 4,758 100% |

Enrollment in Courses Offered by Level and Tenure Status (Fall Semesters)

| | | Fa. 2018 | Fa. 2019 | Fa. 2020 | Fa. 2021 | Fa. 2022 |
|-----------------------|----------------------------|-----------------|-----------------|-----------------|-----------------|-----------------|
| Lower Division | Tenured | 9,630 14% | 7,794 11% | 12,444 17% | 10,614 15% | 8,662 12% |
| | Tenure Track | 2,563 4% | 2,077 3% | 3,011 4% | 3,347 5% | 2,243 3% |
| | Not on Tenure Track | 57,322 82% | 57,909 85% | 55,875 78% | 54,850 80% | 59,707 85% |
| | Total | 69,515 100% | 67,780 100% | 71,330 100% | 68,811 100% | 70,612 100% |
| Upper Division | Tenured | 13,075 26% | 14,333 27% | 15,986 30% | 16,163 31% | 13,912 28% |
| | Tenure Track | 6,303 12% | 5,554 11% | 5,997 11% | 5,502 11% | 4,999 10% |
| | Not on Tenure Track | 31,482 62% | 32,891 62% | 32,072 59% | 30,654 59% | 31,018 62% |
| | Total | 50,860 100% | 52,778 100% | 54,055 100% | 52,319 100% | 49,929 100% |
| Graduate Level | Tenured | 4,764 46% | 5,029 47% | 5,694 48% | 5,882 50% | 5,280 48% |
| | Tenure Track | 1,940 19% | 2,107 20% | 2,582 22% | 2,241 19% | 1,785 16% |
| | Not on Tenure Track | 3,578 35% | 3,625 34% | 3,579 30% | 3,753 32% | 3,922 36% |
| | Total | 10,282 100% | 10,761 100% | 11,855 100% | 11,876 100% | 10,987 100% |
| Total | | 130,657 100% | 131,319 100% | 137,240 100% | 133,006 100% | 131,528 100% |

Semester Credit Hours (SCH) in Courses Offered by Level and Tenure Status (Fall Semesters)

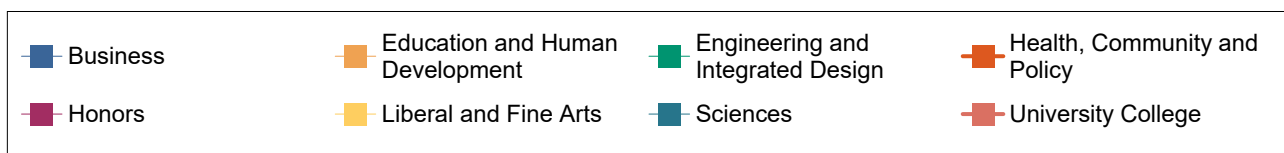
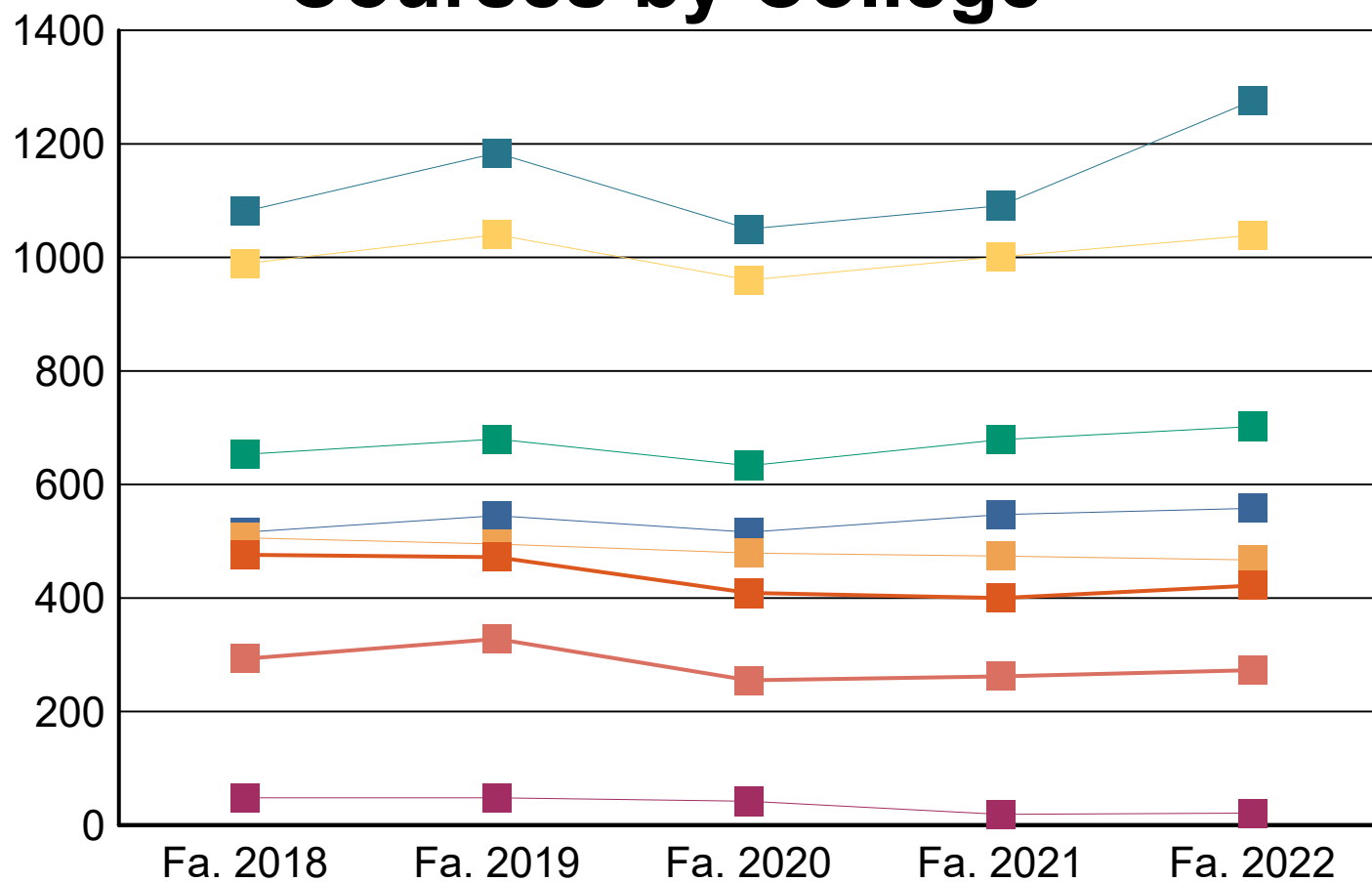
| | | Fa. 2018 | Fa. 2019 | Fa. 2020 | Fa. 2021 | Fa. 2022 |
|-----------------------|----------------------------|-----------------|-----------------|-----------------|-----------------|-----------------|
| Lower Division | Tenured | 28,830 14% | 23,181 12% | 38,069 18% | 32,485 16% | 25,707 13% |
| | Tenure Track | 7,863 4% | 6,084 3% | 8,957 4% | 10,095 5% | 6,685 3% |
| | Not on Tenure Track | 163,958 82% | 166,107 85% | 161,265 77% | 159,138 79% | 170,814 84% |
| | Total | 200,651 100% | 195,372 100% | 208,291 100% | 201,718 100% | 203,206 100% |
| Upper Division | Tenured | 38,866 26% | 41,904 27% | 47,095 29% | 47,704 31% | 41,070 28% |
| | Tenure Track | 17,976 12% | 16,553 11% | 17,802 11% | 16,300 11% | 14,933 10% |
| | Not on Tenure Track | 91,268 62% | 95,349 62% | 94,758 59% | 90,948 59% | 91,970 62% |
| | Total | 148,110 100% | 153,806 100% | 159,655 100% | 154,952 100% | 147,973 100% |
| Graduate Level | Tenured | 13,451 45% | 14,379 47% | 16,329 48% | 16,724 49% | 15,121 47% |
| | Tenure Track | 5,685 19% | 6,045 20% | 7,657 22% | 6,725 20% | 5,302 17% |
| | Not on Tenure Track | 10,457 35% | 10,336 34% | 10,228 30% | 10,834 32% | 11,591 36% |
| | Total | 29,593 100% | 30,760 100% | 34,214 100% | 34,283 100% | 32,014 100% |
| Total | | 378,354 100% | 379,938 100% | 402,160 100% | 390,953 100% | 383,193 100% |

Number Of Courses by College (Fall Semesters)

| | Fa. 2018 | Fa. 2019 | Fa. 2020 | Fa. 2021 | Fa. 2022 |
|--|---------------|---------------|---------------|---------------|---------------|
| Business | 516 11% | 545 11% | 516 12% | 547 12% | 558 12% |
| Education and Human Development | 506 11% | 495 10% | 479 11% | 474 11% | 467 10% |
| Engineering and Integrated Design | 653 14% | 680 14% | 633 15% | 679 15% | 702 15% |
| Health, Community and Policy | 476 10% | 472 10% | 409 9% | 400 9% | 422 9% |
| Honors | 48 1% | 48 1% | 42 1% | 19 0% | 21 0% |
| Liberal and Fine Arts | 989 22% | 1,040 22% | 960 22% | 1,001 22% | 1,039 22% |
| Sciences | 1,081 24% | 1,184 25% | 1,050 24% | 1,091 24% | 1,276 27% |
| University College* | 293 6% | 328 7% | 255 6% | 262 6% | 273 6% |
| Total | 4,562 100% | 4,792 100% | 4,344 100% | 4,473 100% | 4,758 100% |

*For this report University College includes courses which were previously in the Freshmen Initiative or Undergraduate Studies.

Courses by College



*For this report University College includes courses which were previously in the Freshmen Initiative or Undergraduate Studies.

Enrollment in Courses Offered by College (Fall Semesters)

| | Fa. 2018 | Fa. 2019 | Fa. 2020 | Fa. 2021 | Fa. 2022 |
|--|-----------------|-----------------|-----------------|-----------------|-----------------|
| Business | 24,367 19% | 25,116 19% | 27,593 20% | 27,629 21% | 27,506 21% |
| Education and Human Development | 8,099 6% | 7,930 6% | 7,846 6% | 7,940 6% | 7,468 6% |
| Engineering and Integrated Design | 10,095 8% | 10,150 8% | 11,118 8% | 10,935 8% | 10,818 8% |
| Health, Community and Policy | 19,742 15% | 20,151 15% | 20,594 15% | 19,810 15% | 18,651 14% |
| Honors | 565 0% | 664 1% | 788 1% | 407 0% | 343 0% |
| Liberal and Fine Arts | 28,102 22% | 27,283 21% | 29,008 21% | 27,215 20% | 27,471 21% |
| Sciences | 32,790 25% | 32,308 25% | 33,659 25% | 32,535 24% | 32,654 25% |
| University College* | 6,897 5% | 7,717 6% | 6,634 5% | 6,535 5% | 6,617 5% |
| Total | 130,657 100% | 131,319 100% | 137,240 100% | 133,006 100% | 131,528 100% |

*For this report University College includes courses which were previously in the Freshmen Initiative or Undergraduate Studies.

Semester Credit Hours (SCH) in Courses Offered by College (Fall Semesters)

| | Fa. 2018 | Fa. 2019 | Fa. 2020 | Fa. 2021 | Fa. 2022 |
|--|-----------------|-----------------|-----------------|-----------------|-----------------|
| Business | 71,440 19% | 73,461 19% | 81,824 20% | 82,597 21% | 82,470 22% |
| Education and Human Development | 24,512 6% | 24,013 6% | 23,862 6% | 23,982 6% | 22,429 6% |
| Engineering and Integrated Design | 29,360 8% | 29,737 8% | 32,733 8% | 32,597 8% | 32,095 8% |
| Health, Community and Policy | 57,844 15% | 58,838 15% | 60,675 15% | 58,656 15% | 55,639 15% |
| Honors | 1,322 0% | 1,686 0% | 1,859 0% | 831 0% | 725 0% |
| Liberal and Fine Arts | 83,455 22% | 80,911 21% | 86,572 22% | 80,784 21% | 81,361 21% |
| Sciences | 90,944 24% | 89,473 24% | 95,664 24% | 92,871 24% | 89,599 23% |
| University College* | 19,477 5% | 21,819 6% | 18,971 5% | 18,635 5% | 18,875 5% |
| Total | 378,354 100% | 379,938 100% | 402,160 100% | 390,953 100% | 383,193 100% |

*For this report University College includes courses which were previously in the Freshmen Initiative or Undergraduate Studies.

Semester Credit Hours by College and Course Level (Fall Semesters)

| | | Fa. 2018 | Fa. 2019 | Fa. 2020 | Fa. 2021 | Fa. 2022 |
|--|--------------|----------|----------|----------|----------|----------|
| Business | UG | 64,518 | 66,228 | 71,822 | 72,003 | 73,052 |
| | MA | 6,367 | 6,599 | 9,365 | 9,977 | 8,842 |
| | DR | 555 | 634 | 637 | 617 | 576 |
| | Total | 71,440 | 73,461 | 81,824 | 82,597 | 82,470 |
| Education and Human Development | UG | 16,303 | 15,694 | 15,807 | 16,583 | 15,389 |
| | MA | 6,964 | 6,982 | 6,780 | 5,977 | 5,691 |
| | DR | 1,245 | 1,337 | 1,275 | 1,422 | 1,349 |
| | Total | 24,512 | 24,013 | 23,862 | 23,982 | 22,429 |
| Engineering and Integrated Design | UG | 25,288 | 25,855 | 28,407 | 28,020 | 27,730 |
| | MA | 2,860 | 2,475 | 2,990 | 3,177 | 3,144 |
| | DR | 1,212 | 1,407 | 1,336 | 1,400 | 1,221 |
| | Total | 29,360 | 29,737 | 32,733 | 32,597 | 32,095 |
| Health, Community and Policy | UG | 53,399 | 54,162 | 55,807 | 54,167 | 51,532 |
| | MA | 4,101 | 4,236 | 4,472 | 4,086 | 3,677 |
| | DR | 344 | 440 | 396 | 403 | 430 |
| | Total | 57,844 | 58,838 | 60,675 | 58,656 | 55,639 |
| Honors | UG | 1,322 | 1,686 | 1,859 | 831 | 725 |
| | MA | 0 | 0 | 0 | 0 | 0 |
| | DR | 0 | 0 | 0 | 0 | 0 |
| | Total | 1,322 | 1,686 | 1,859 | 831 | 725 |
| Liberal and Fine Arts | UG | 81,547 | 78,687 | 84,164 | 78,198 | 78,982 |
| | MA | 1,599 | 1,897 | 2,138 | 2,275 | 1,968 |
| | DR | 309 | 327 | 270 | 311 | 411 |
| | Total | 83,455 | 80,911 | 86,572 | 80,784 | 81,361 |
| Sciences | UG | 87,099 | 85,275 | 91,276 | 88,365 | 84,987 |
| | MA | 2,127 | 2,214 | 2,328 | 2,429 | 2,500 |
| | DR | 1,718 | 1,984 | 2,060 | 2,077 | 2,112 |
| | Total | 90,944 | 89,473 | 95,664 | 92,871 | 89,599 |
| University College* | UG | 19,477 | 21,819 | 18,959 | 18,602 | 18,830 |
| | MA | 0 | 0 | 9 | 21 | 39 |
| | DR | 0 | 0 | 3 | 12 | 6 |
| | Total | 19,477 | 21,819 | 18,971 | 18,635 | 18,875 |
| Total | | 348,953 | 349,406 | 368,101 | 356,769 | 351,227 |
| | | 24,018 | 24,403 | 28,082 | 27,942 | 25,861 |
| | | 5,383 | 6,129 | 5,977 | 6,242 | 6,105 |
| | | 378,354 | 379,938 | 402,160 | 390,953 | 383,193 |

*For this report University College includes courses which were previously in the Freshmen Initiative or Undergraduate Studies.

Student Full Time Equivalent by College and Course Level (Fall Semesters)

| | | Fa. 2018 | Fa. 2019 | Fa. 2020 | Fa. 2021 | Fa. 2022 |
|--|--------------|----------|----------|----------|----------|----------|
| Business | UG | 4,301.2 | 4,415.2 | 4,788.1 | 4,800.2 | 4,870.1 |
| | MA | 530.6 | 549.9 | 780.4 | 831.4 | 736.8 |
| | DR | 61.7 | 70.4 | 70.8 | 68.6 | 64.0 |
| | Total | 4,893.5 | 5,035.6 | 5,639.3 | 5,700.2 | 5,671.0 |
| Education and Human Development | UG | 1,086.9 | 1,046.3 | 1,053.8 | 1,105.5 | 1,025.9 |
| | MA | 580.3 | 581.8 | 565.0 | 498.1 | 474.3 |
| | DR | 138.3 | 148.6 | 141.7 | 158.0 | 149.9 |
| | Total | 1,805.5 | 1,776.7 | 1,760.5 | 1,761.6 | 1,650.1 |
| Engineering and Integrated Design | UG | 1,685.9 | 1,723.7 | 1,893.8 | 1,868.0 | 1,848.7 |
| | MA | 238.3 | 206.3 | 249.2 | 264.8 | 262.0 |
| | DR | 134.7 | 156.3 | 148.4 | 155.6 | 135.7 |
| | Total | 2,058.9 | 2,086.3 | 2,291.4 | 2,288.3 | 2,246.3 |
| Health, Community and Policy | UG | 3,559.9 | 3,610.8 | 3,720.5 | 3,611.1 | 3,435.5 |
| | MA | 341.8 | 353.0 | 372.7 | 340.5 | 306.4 |
| | DR | 38.2 | 48.9 | 44.0 | 44.8 | 47.8 |
| | Total | 3,939.9 | 4,012.7 | 4,137.1 | 3,996.4 | 3,789.7 |
| Honors | UG | 88.1 | 112.4 | 123.9 | 55.4 | 48.3 |
| | MA | 0.0 | 0.0 | 0.0 | 0.0 | 0.0 |
| | DR | 0.0 | 0.0 | 0.0 | 0.0 | 0.0 |
| | Total | 88.1 | 112.4 | 123.9 | 55.4 | 48.3 |
| Liberal and Fine Arts | UG | 5,436.5 | 5,245.8 | 5,610.9 | 5,213.2 | 5,265.5 |
| | MA | 133.3 | 158.1 | 178.2 | 189.6 | 164.0 |
| | DR | 34.3 | 36.3 | 30.0 | 34.6 | 45.7 |
| | Total | 5,604.1 | 5,440.2 | 5,819.1 | 5,437.3 | 5,475.1 |
| Sciences | UG | 5,806.6 | 5,685.0 | 6,085.1 | 5,891.0 | 5,665.8 |
| | MA | 177.3 | 184.5 | 194.0 | 202.4 | 208.3 |
| | DR | 190.9 | 220.4 | 228.9 | 230.8 | 234.7 |
| | Total | 6,174.7 | 6,089.9 | 6,508.0 | 6,324.2 | 6,108.8 |
| University College | UG | 1,298.5 | 1,454.6 | 1,263.9 | 1,240.1 | 1,255.3 |
| | MA | 0.0 | 0.0 | 0.8 | 1.8 | 3.3 |
| | DR | 0.0 | 0.0 | 0.3 | 1.3 | 0.7 |
| | Total | 1,298.5 | 1,454.6 | 1,265.0 | 1,243.2 | 1,259.3 |
| Total | | 23,263.6 | 23,293.7 | 24,540.1 | 23,784.6 | 23,415.1 |
| | | 2,001.5 | 2,033.6 | 2,340.2 | 2,328.5 | 2,155.1 |
| | | 598.1 | 681.0 | 664.1 | 693.6 | 678.3 |
| | | 25,863.2 | 26,008.3 | 27,544.3 | 26,806.7 | 26,248.6 |

*For this report University College includes courses which were previously in the Freshmen Initiative or Undergraduate Studies.