

# Graduate Admissions

The UTSA Fact Book  
Office of Institutional Research and Analysis  
Fall 2022

## **First Time Masters Student Applications**

Applied, accepted, and enrolled data come from the Coordinating Board Admissions file (CBM00B) and contains summer and fall applications, while enrollment data is for the fall semester. Only students who have never applied at the Masters level are included here. Only the first-time, degree-seeking students are included in the cohorts for graduation and retention information. Contact the Office of Institutional Research and Analysis with questions: [Institutional.Research@utsa.edu](mailto:Institutional.Research@utsa.edu)

## First Time Masters Applied, Accepted, and Enrolled

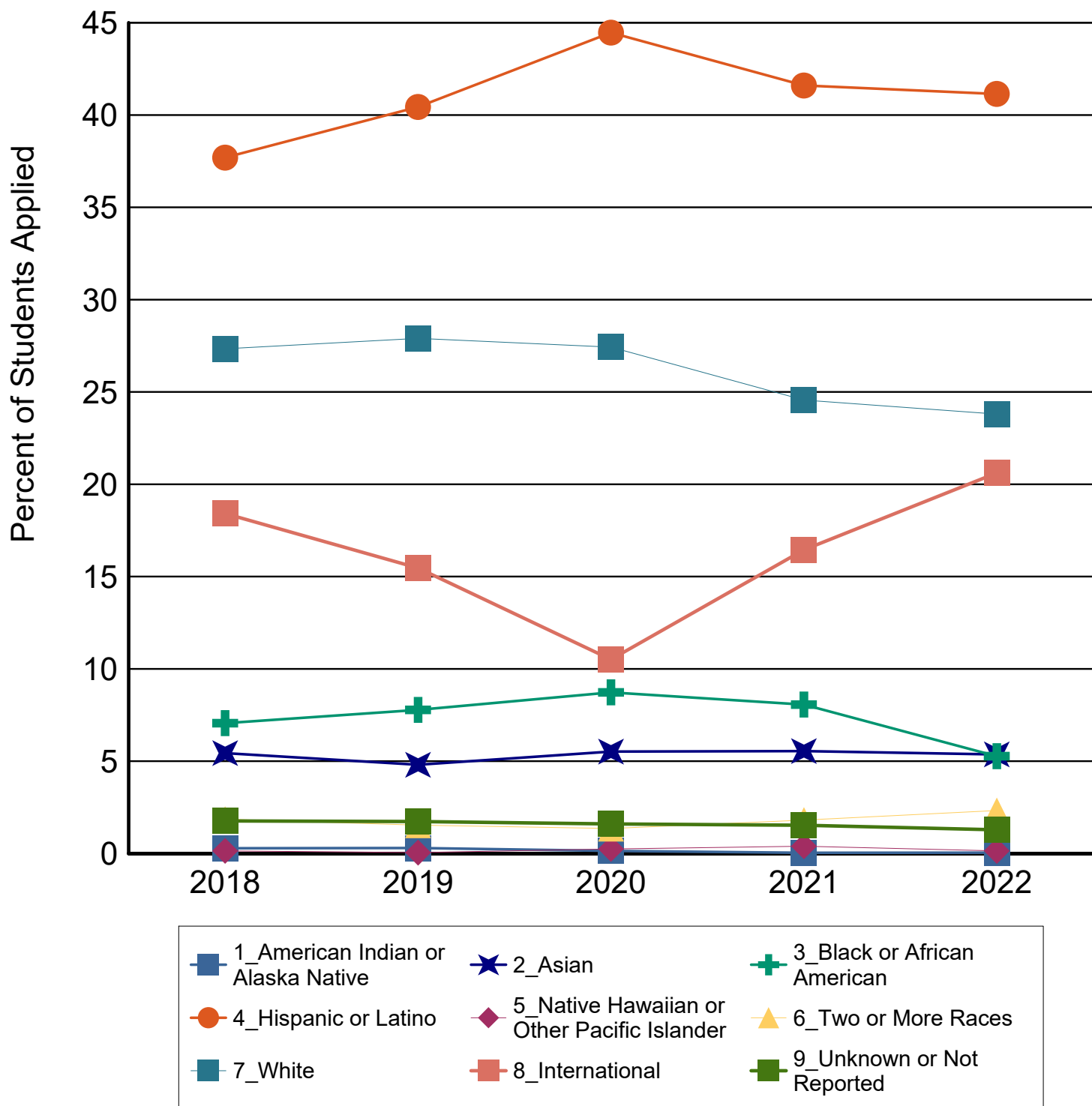
		2018	2019	2020	2021	2022
First Time	Applied	2,096	2,018	2,807	2,541	2,105
	Accepted	1,763	1,744	2,384	2,126	1,735
	% Accepted	84%	86%	85%	84%	82%
	Enrolled	1,039	1,131	1,573	1,274	1,079
	% Enrolled	59%	65%	66%	60%	62%

## First Time Masters Applied, Accepted, and Enrolled by Ethnicity

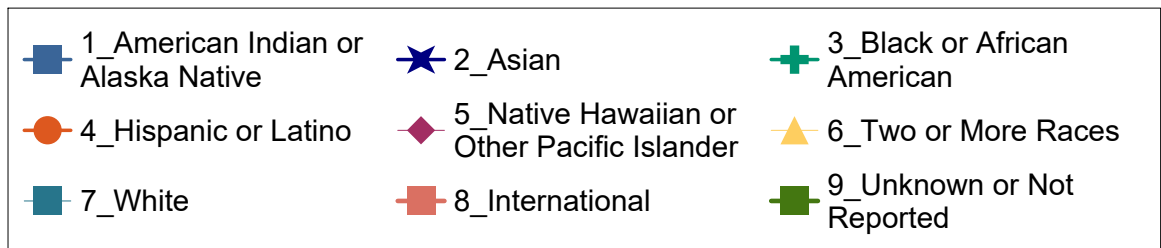
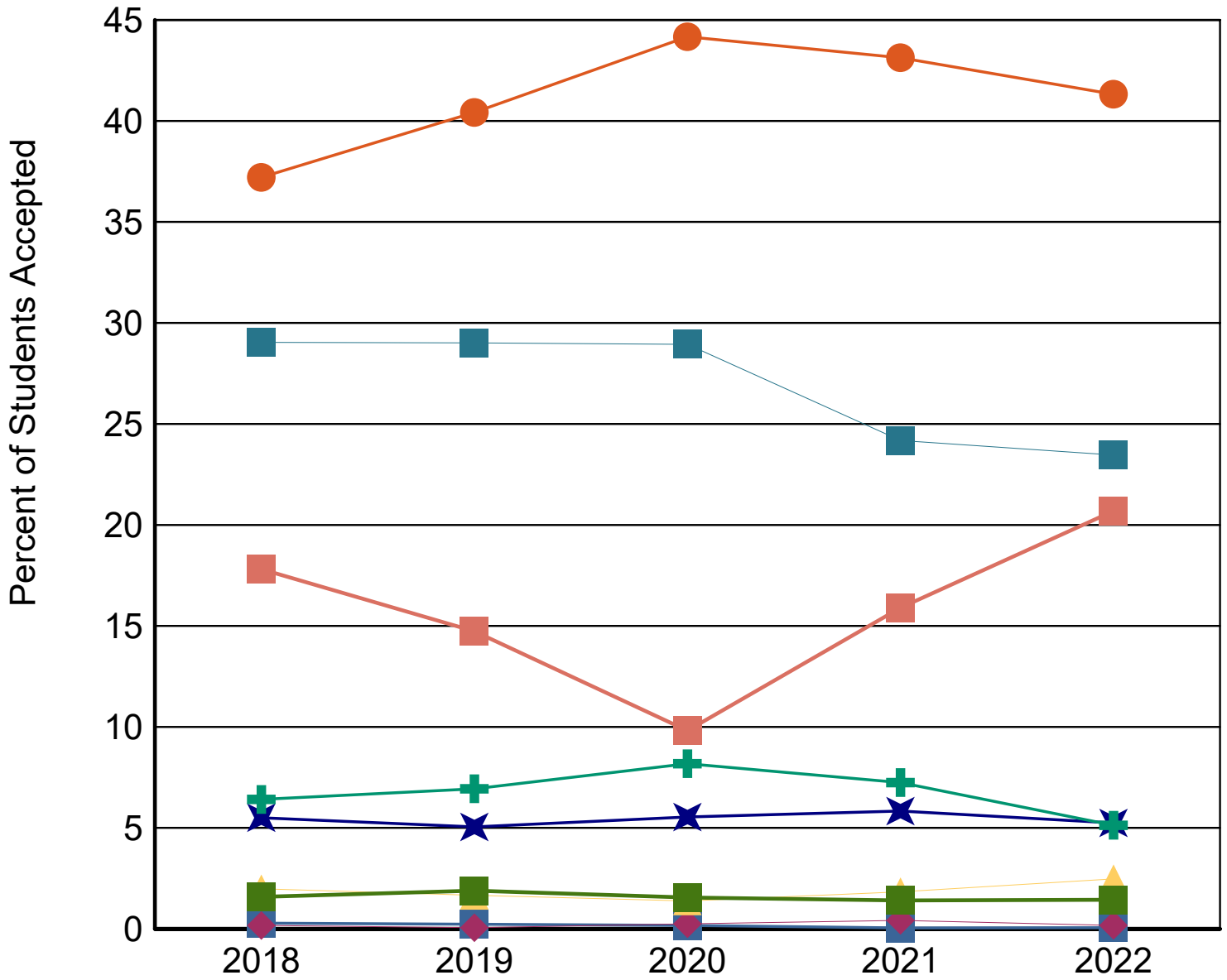
		2018	2019	2020	2021	2022
American Indian or Alaska Native	Applied	6	6	4	1	1
	Accepted	5	4	4	1	1
	% Accepted	83%	67%	100%	100%	100%
	Enrolled	4	3	2	1	1
	% Enrolled	80%	75%	50%	100%	100%
Asian	Applied	114	97	155	141	113
	Accepted	97	88	132	124	91
	% Accepted	85%	91%	85%	88%	81%
	Enrolled	63	55	87	65	55
	% Enrolled	65%	63%	66%	52%	60%
Black or African American	Applied	148	157	245	205	111
	Accepted	113	121	195	154	89
	% Accepted	76%	77%	80%	75%	80%
	Enrolled	80	87	123	92	61
	% Enrolled	71%	72%	63%	60%	69%
Hispanic or Latino	Applied	790	816	1,248	1,057	866
	Accepted	656	705	1,053	917	717
	% Accepted	83%	86%	84%	87%	83%
	Enrolled	473	541	779	666	543
	% Enrolled	72%	77%	74%	73%	76%
Native Hawaiian or Other Pacific Islander	Applied	3	1	7	10	3
	Accepted	3	1	6	9	3
	% Accepted	100%	100%	86%	90%	100%
	Enrolled	2	1	4	4	2
	% Enrolled	67%	100%	67%	44%	67%
Two or More Races	Applied	39	31	38	46	49
	Accepted	35	29	33	39	43
	% Accepted	90%	94%	87%	85%	88%
	Enrolled	25	20	24	24	28
	% Enrolled	71%	69%	73%	62%	65%
White	Applied	573	563	770	624	501
	Accepted	512	506	690	514	407
	% Accepted	89%	90%	90%	82%	81%
	Enrolled	326	330	452	300	270
	% Enrolled	64%	65%	66%	58%	66%
International	Applied	386	312	295	418	434
	Accepted	314	257	234	338	359
	% Accepted	81%	82%	79%	81%	83%
	Enrolled	48	71	75	101	108
	% Enrolled	15%	28%	32%	30%	30%

		2018	2019	2020	2021	2022
Unknown or Not Reported	Applied	37	35	45	39	27
	Accepted	28	33	37	30	25
	% Accepted	76%	94%	82%	77%	93%
	Enrolled	18	23	27	21	11
	% Enrolled	64%	70%	73%	70%	44%
Total	Applied	2,096	2,018	2,807	2,541	2,105
	Accepted	1,763	1,744	2,384	2,126	1,735
	% Accepted	84%	86%	85%	84%	82%
	Enrolled	1,039	1,131	1,573	1,274	1,079
	% Enrolled	59%	65%	66%	60%	62%

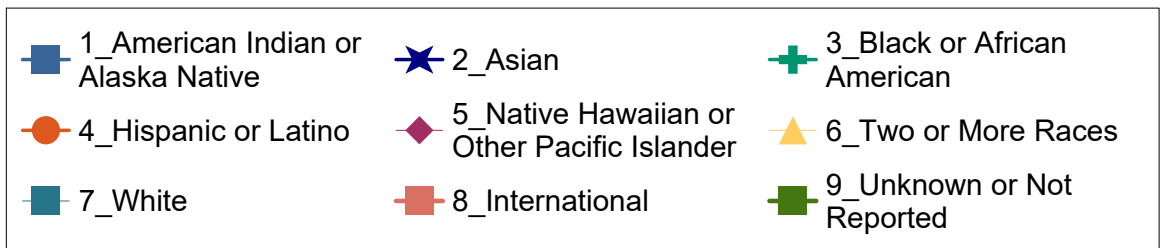
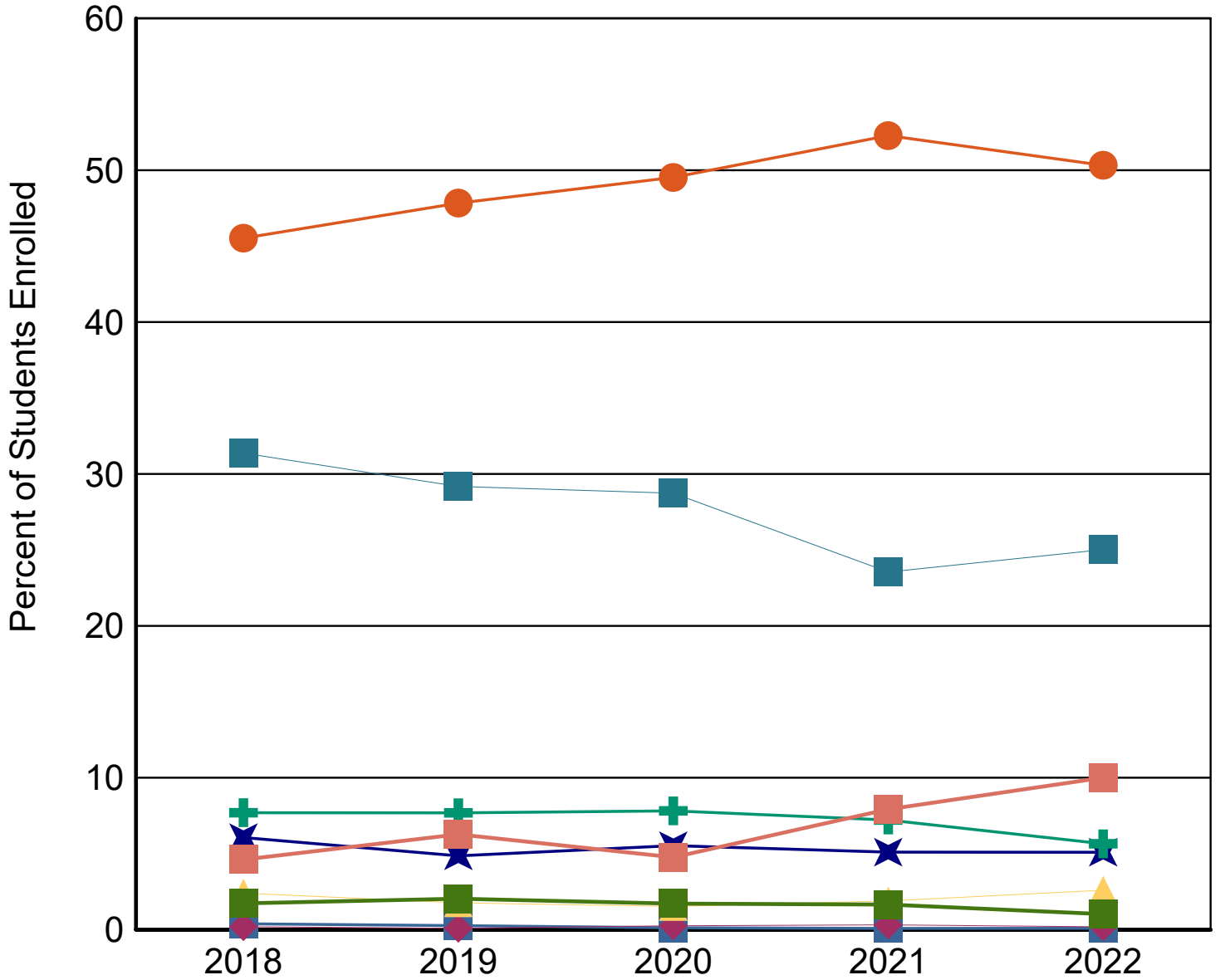
# First Time Masters Applied by Ethnicity



# First Time Masters Accepted by Ethnicity



# First Time Masters Enrolled by Ethnicity



## First Time Masters Applied, Accepted, and Enrolled by Gender

		2018	2019	2020	2021	2022
<b>Female</b>	<b>Applied</b>	1,128	1,108	1,556	1,452	1,171
	<b>Accepted</b>	953	982	1,324	1,224	958
	<b>% Accepted</b>	84%	89%	85%	84%	82%
	<b>Enrolled</b>	577	644	879	745	611
	<b>% Enrolled</b>	61%	66%	66%	61%	64%
<b>Male</b>	<b>Applied</b>	968	910	1,251	1,089	934
	<b>Accepted</b>	810	762	1,060	902	777
	<b>% Accepted</b>	84%	84%	85%	83%	83%
	<b>Enrolled</b>	462	487	694	529	468
	<b>% Enrolled</b>	57%	64%	65%	59%	60%
<b>Total</b>	<b>Applied</b>	2,096	2,018	2,807	2,541	2,105
	<b>Accepted</b>	1,763	1,744	2,384	2,126	1,735
	<b>% Accepted</b>	84%	86%	85%	84%	82%
	<b>Enrolled</b>	1,039	1,131	1,573	1,274	1,079
	<b>% Enrolled</b>	59%	65%	66%	60%	62%



## First Time Masters Applied, Accepted, and Enrolled by Economic Region

		2018	2019	2020	2021	2022
<b>Alamo</b>	<b>Applied</b>	1,158	1,159	1,746	1,430	1,233
	<b>Accepted</b>	999	1,027	1,506	1,251	1,040
	<b>% Accepted</b>	86%	89%	86%	87%	84%
	<b>Enrolled</b>	774	822	1,158	914	809
	<b>% Enrolled</b>	77%	80%	77%	73%	78%
<b>Capital</b>	<b>Applied</b>	68	75	131	138	111
	<b>Accepted</b>	61	64	110	107	81
	<b>% Accepted</b>	90%	85%	84%	78%	73%
	<b>Enrolled</b>	25	35	64	70	36
	<b>% Enrolled</b>	41%	55%	58%	65%	44%
<b>Central Texas</b>	<b>Applied</b>	25	27	26	20	18
	<b>Accepted</b>	19	23	23	16	13
	<b>% Accepted</b>	76%	85%	88%	80%	72%
	<b>Enrolled</b>	8	14	13	7	5
	<b>% Enrolled</b>	42%	61%	57%	44%	38%
<b>Gulf Coast</b>	<b>Applied</b>	117	105	172	120	79
	<b>Accepted</b>	95	93	140	90	67
	<b>% Accepted</b>	81%	89%	81%	75%	85%
	<b>Enrolled</b>	54	43	75	43	38
	<b>% Enrolled</b>	57%	46%	54%	48%	57%
<b>High Plains</b>	<b>Applied</b>	5	6	7	14	9
	<b>Accepted</b>	4	3	4	11	5
	<b>% Accepted</b>	80%	50%	57%	79%	56%
	<b>Enrolled</b>	0	3	3	5	2
	<b>% Enrolled</b>	0%	100%	75%	45%	40%
<b>Metroplex</b>	<b>Applied</b>	39	47	79	80	45
	<b>Accepted</b>	31	39	65	53	37
	<b>% Accepted</b>	79%	83%	82%	66%	82%
	<b>Enrolled</b>	10	21	29	24	11
	<b>% Enrolled</b>	32%	54%	45%	45%	30%
<b>Northwest</b>	<b>Applied</b>	3	4	8	3	5
	<b>Accepted</b>	3	4	6	3	3
	<b>% Accepted</b>	100%	100%	75%	100%	60%
	<b>Enrolled</b>	3	4	1	2	0
	<b>% Enrolled</b>	100%	100%	17%	67%	0%
<b>South Texas</b>	<b>Applied</b>	149	134	181	123	80
	<b>Accepted</b>	122	112	153	108	67
	<b>% Accepted</b>	82%	84%	85%	88%	84%
	<b>Enrolled</b>	79	70	113	69	44
	<b>% Enrolled</b>	65%	63%	74%	64%	66%
<b>Southeast</b>	<b>Applied</b>	14	10	10	5	4
	<b>Accepted</b>	10	8	8	3	2
	<b>% Accepted</b>	71%	80%	80%	60%	50%
	<b>Enrolled</b>	3	2	4	1	2
	<b>% Enrolled</b>	30%	25%	50%	33%	100%
<b>Upper East</b>	<b>Applied</b>	4	8	11	9	4
	<b>Accepted</b>	3	6	10	7	2
	<b>% Accepted</b>	75%	75%	91%	78%	50%
	<b>Enrolled</b>	1	5	5	3	1
	<b>% Enrolled</b>	33%	83%	50%	43%	50%

		2018	2019	2020	2021	2022
<b>Upper Rio Grande</b>	<b>Applied</b>	20	13	21	14	24
	<b>Accepted</b>	15	10	21	11	19
	<b>% Accepted</b>	75%	77%	100%	79%	79%
	<b>Enrolled</b>	11	7	14	6	11
	<b>% Enrolled</b>	73%	70%	67%	55%	58%
<b>West Texas</b>	<b>Applied</b>	9	14	10	9	7
	<b>Accepted</b>	9	12	9	7	5
	<b>% Accepted</b>	100%	86%	90%	78%	71%
	<b>Enrolled</b>	5	8	5	4	5
	<b>% Enrolled</b>	56%	67%	56%	57%	100%
<b>Not in Texas</b>	<b>Applied</b>	485	416	405	576	486
	<b>Accepted</b>	392	343	329	459	394
	<b>% Accepted</b>	81%	82%	81%	80%	81%
	<b>Enrolled</b>	66	97	89	126	115
	<b>% Enrolled</b>	17%	28%	27%	27%	29%
<b>Total</b>	<b>Applied</b>	2,096	2,018	2,807	2,541	2,105
	<b>Accepted</b>	1,763	1,744	2,384	2,126	1,735
	<b>% Accepted</b>	84%	86%	85%	84%	82%
	<b>Enrolled</b>	1,039	1,131	1,573	1,274	1,079
	<b>% Enrolled</b>	59%	65%	66%	60%	62%

The map of the regions below comes from the Texas Comptroller's website at <http://www.window.state.tx.us>. A full listing of counties is on following page.



## Texas Economic Regions

**Alamo:** Atascosa, Bandera, Bexar, Calhoun, Comal, DeWitt, Frio, Gillespie, Goliad, Gonzales, Guadalupe, Jackson, Karnes, Kendall, Kerr, Lavaca, Medina, Victoria, Wilson

**Capital:** Bastrop, Blanco, Burnet, Caldwell, Fayette, Hays, Lee, Llano, Travis, Williamson

**Central Texas:** Bell, Bosque, Brazos, Burleson, Coryell, Falls, Freestone, Grimes, Hamilton, Hill, Lampasas, Leon, Limestone, Madison, McLennan, Milam, Mills, Robertson, San Saba, Washington

**Gulf Coast:** Austin, Brazoria, Chambers, Colorado, Fort Bend, Galveston, Harris, Liberty, Matagorda, Montgomery, Walker, Waller, Wharton

**High Plains:** Armstrong, Bailey, Briscoe, Carson, Castro, Childress, Cochran, Collingsworth, Crosby, Dallam, Deaf Smith, Dickens, Donley, Floyd, Garza, Gray, Hale, Hall, Hansford, Hartley, Hemphill, Hockley, Hutchinson, King, Lamb, Lipscomb, Lubbock, Lynn, Moore, Motley, Ochiltree, Oldham, Parmer, Potter, Randall, Roberts, Sherman, Swisher, Terry, Wheeler, Yoakum

**Metroplex:** Collin, Cooke, Dallas, Denton, Ellis, Erath, Fannin, Grayson, Hood, Hunt, Johnson, Kaufman, Navarro, Palo Pinto, Parker, Rockwall, Somervell, Tarrant, Wise

**Northwest:** Archer, Baylor, Brown, Callahan, Clay, Coleman, Comanche, Cottle, Eastland, Fisher, Foard, Hardeman, Haskell, Jack, Jones, Kent, Knox, Mitchell, Montague, Nolan, Runnels, Scurry, Shackelford, Stephens, Stonewall, Taylor, Throckmorton, Wichita, Wilbarger, Young

**South Texas:** Aransas, Bee, Brooks, Cameron, Dimmit, Duval, Edwards, Hidalgo, Jim Hogg, Jim Wells, Kenedy, Kinney, Kleberg, La Salle, Live Oak, Maverick, McMullen, Nueces, Real, Refugio, San Patricio, Starr, Uvalde, Val Verde, Webb, Willacy, Zapata, Zavala

**Southeast:** Angelina, Hardin, Houston, Jasper, Jefferson, Nacogdoches, Newton, Orange, Polk, Sabine, San Augustine, San Jacinto, Shelby, Trinity, Tyler

**Upper East:** Anderson, Bowie, Camp, Cass, Cherokee, Delta, Franklin, Gregg, Harrison, Henderson, Hopkins, Lamar, Marion, Morris, Panola, Rains, Red River, Rusk, Smith, Titus, Upshur, Van Zandt, Wood

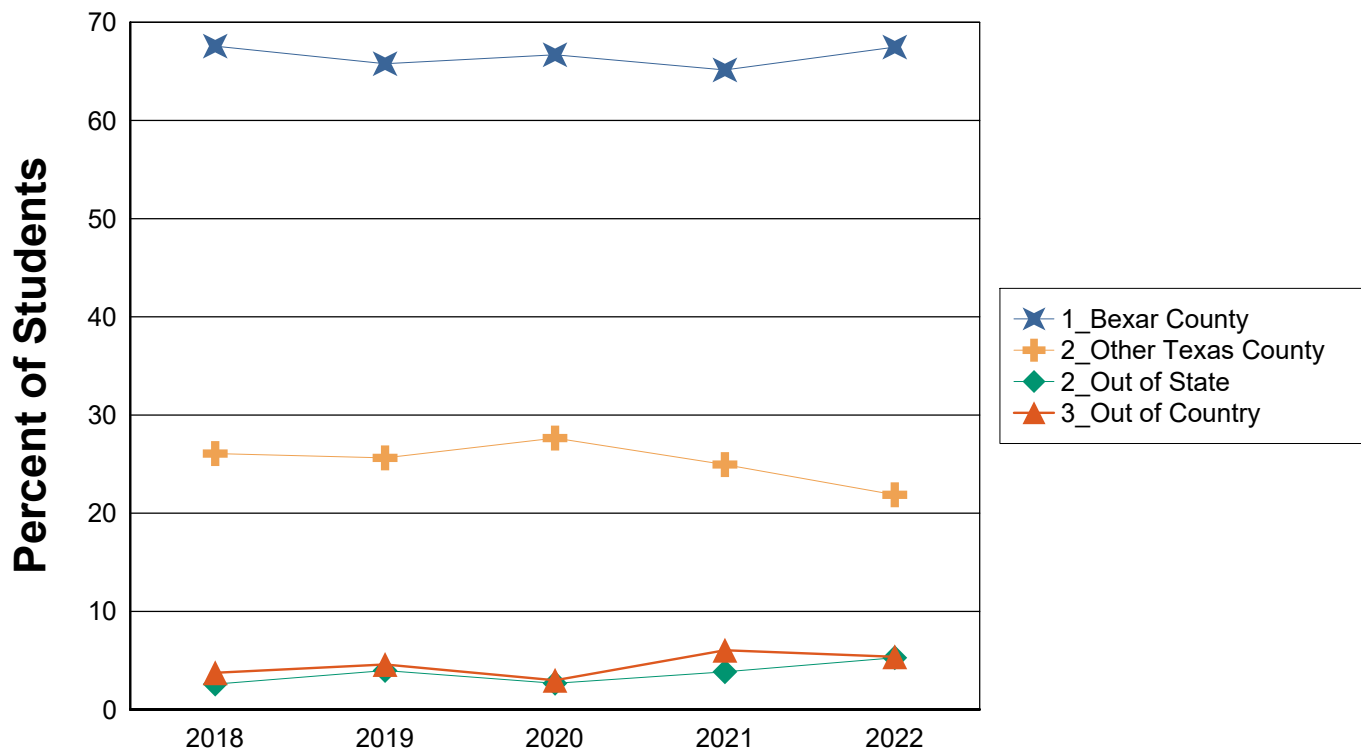
**Upper Rio Grande:** Brewster, Culberson, El Paso, Hudspeth, Jeff Davis, Presidio

**West Texas:** Andrews, Borden, Coke, Concho, Crane, Crockett, Dawson, Ector, Gaines, Glasscock, Howard, Irion, Kimble, Loving, Martin, Mason, McCulloch, Menard, Midland, Pecos, Reagan, Reeves, Schleicher, Sterling, Sutton, Terrell, Tom Green, Upton, Ward, Winkler

## First Time Masters Applied, Accepted, and Enrolled by Residence Category

		2018	2019	2020	2021	2022
<b>Bexar County</b>	<b>Applied</b>	1,047	1,048	1,560	1,288	1,098
	<b>Accepted</b>	902	928	1,355	1,128	928
	<b>% Accepted</b>	86%	89%	87%	88%	85%
	<b>Enrolled</b>	702	744	1,049	830	728
	<b>% Enrolled</b>	78%	80%	77%	74%	78%
<b>Other Texas County</b>	<b>Applied</b>	564	554	842	677	521
	<b>Accepted</b>	469	473	700	539	413
	<b>% Accepted</b>	83%	85%	83%	80%	79%
	<b>Enrolled</b>	271	290	435	318	236
	<b>% Enrolled</b>	58%	61%	62%	59%	57%
<b>Out of State</b>	<b>Applied</b>	121	153	156	199	197
	<b>Accepted</b>	96	129	134	158	153
	<b>% Accepted</b>	79%	84%	86%	79%	78%
	<b>Enrolled</b>	27	45	42	49	57
	<b>% Enrolled</b>	28%	35%	31%	31%	37%
<b>Out of Country</b>	<b>Applied</b>	364	263	249	377	289
	<b>Accepted</b>	296	214	195	301	241
	<b>% Accepted</b>	81%	81%	78%	80%	83%
	<b>Enrolled</b>	39	52	47	77	58
	<b>% Enrolled</b>	13%	24%	24%	26%	24%
<b>Total</b>	<b>Applied</b>	2,096	2,018	2,807	2,541	2,105
	<b>Accepted</b>	1,763	1,744	2,384	2,126	1,735
	<b>% Applied</b>	84%	86%	85%	84%	82%
	<b>Enrolled</b>	1,039	1,131	1,573	1,274	1,079
	<b>% Enrolled</b>	59%	65%	66%	60%	62%

## First Time Masters Applied, Accepted, and Enrolled by Residence Category



## **First Time Doctoral Student Applications**

Applied, accepted, and enrolled data come from the Coordinating Board Admissions file (CBM00B) and contains summer and fall applications, while enrollment data is for the fall semester. Only students who have never applied at the Doctoral level are included here. Only the first-time, degree-seeking students are included in the cohorts for graduation and retention information. Contact the Office of Institutional Research and Analysis with questions: [Institutional.Research@utsa.edu](mailto:Institutional.Research@utsa.edu)

## First Time Doctoral Applied, Accepted, and Enrolled

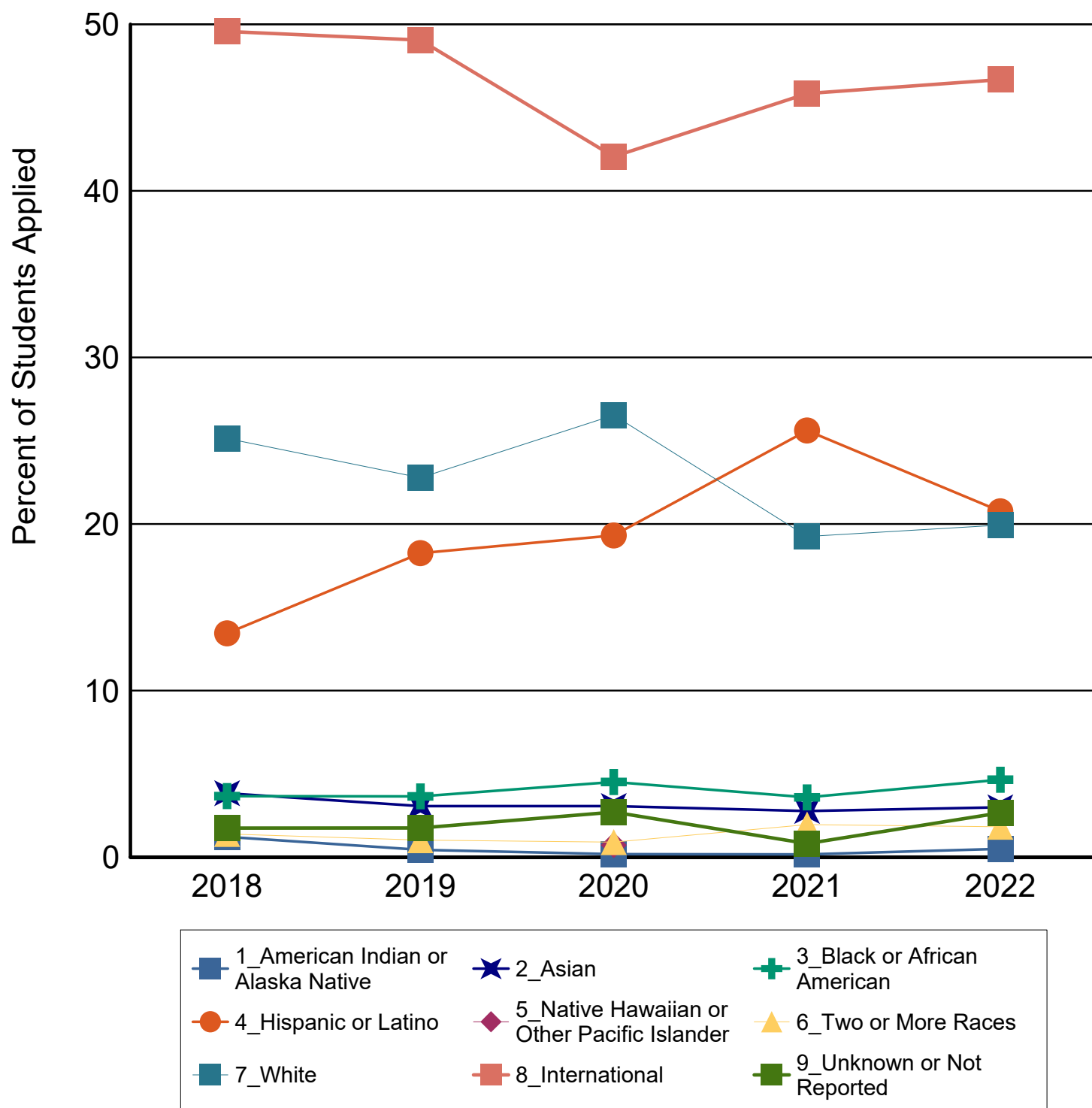
		2018	2019	2020	2021	2022
First Time	Applied	573	685	554	613	602
	Accepted	301	336	304	290	308
	% Accepted	53%	49%	55%	47%	51%
	Enrolled	178	209	170	188	175
	% Enrolled	59%	62%	56%	65%	57%

## First Time Doctoral Applied, Accepted, and Enrolled by Ethnicity

		2018	2019	2020	2021	2022
American Indian or Alaska Native	Applied	7	3	1	1	3
	Accepted	4	1	1	0	2
	% Accepted	57%	33%	100%	0%	67%
	Enrolled	4	0	1	0	2
	% Enrolled	100%	0%	100%		100%
Asian	Applied	22	21	17	17	18
	Accepted	11	11	5	9	9
	% Accepted	50%	52%	29%	53%	50%
	Enrolled	6	5	3	7	8
	% Enrolled	55%	45%	60%	78%	89%
Black or African American	Applied	21	25	25	22	28
	Accepted	12	13	11	9	14
	% Accepted	57%	52%	44%	41%	50%
	Enrolled	11	9	7	6	9
	% Enrolled	92%	69%	64%	67%	64%
Hispanic or Latino	Applied	77	125	107	157	125
	Accepted	52	78	77	96	72
	% Accepted	68%	62%	72%	61%	58%
	Enrolled	40	58	54	79	51
	% Enrolled	77%	74%	70%	82%	71%
Native Hawaiian or Other Pacific Islander	Applied	0	0	4	0	0
	Accepted	0	0	1	0	0
	% Accepted	0%	0%	25%	0%	0%
	Enrolled	0	0	1	0	0
	% Enrolled			100%		
Two or More Races	Applied	8	7	5	12	11
	Accepted	4	5	3	6	8
	% Accepted	50%	71%	60%	50%	73%
	Enrolled	3	1	1	5	6
	% Enrolled	75%	20%	33%	83%	75%
White	Applied	144	156	147	118	120
	Accepted	99	94	93	63	71
	% Accepted	69%	60%	63%	53%	59%
	Enrolled	56	65	58	40	49
	% Enrolled	57%	69%	62%	63%	69%
International	Applied	284	336	233	281	281
	Accepted	114	126	106	105	119
	% Accepted	40%	38%	45%	37%	42%
	Enrolled	55	66	43	49	47
	% Enrolled	48%	52%	41%	47%	39%

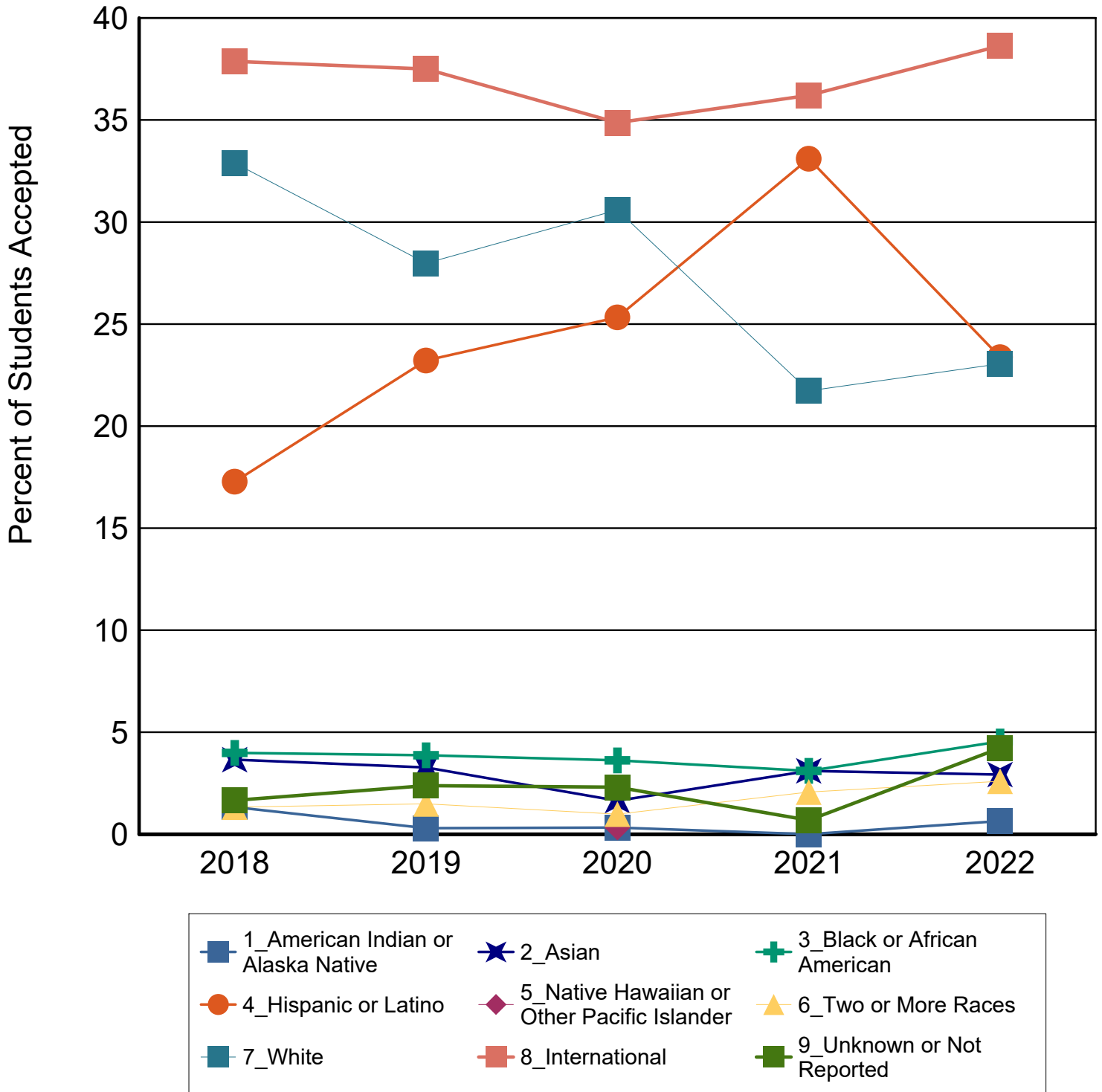
		2018	2019	2020	2021	2022
Unknown or Not Reported	Applied	10	12	15	5	16
	Accepted	5	8	7	2	13
	% Accepted	50%	67%	47%	40%	81%
	Enrolled	3	5	2	2	3
	% Enrolled	60%	63%	29%	100%	23%
Total	Applied	573	685	554	613	602
	Accepted	301	336	304	290	308
	% Accepted	53%	49%	55%	47%	51%
	Enrolled	178	209	170	188	175
	% Enrolled	59%	62%	56%	65%	57%

# First Time Doctoral Applied by Ethnicity

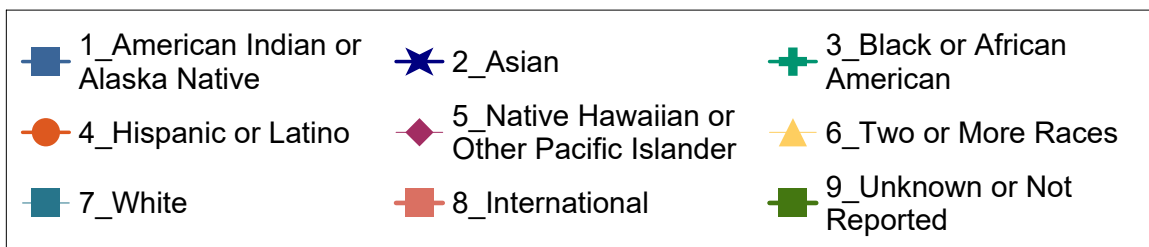
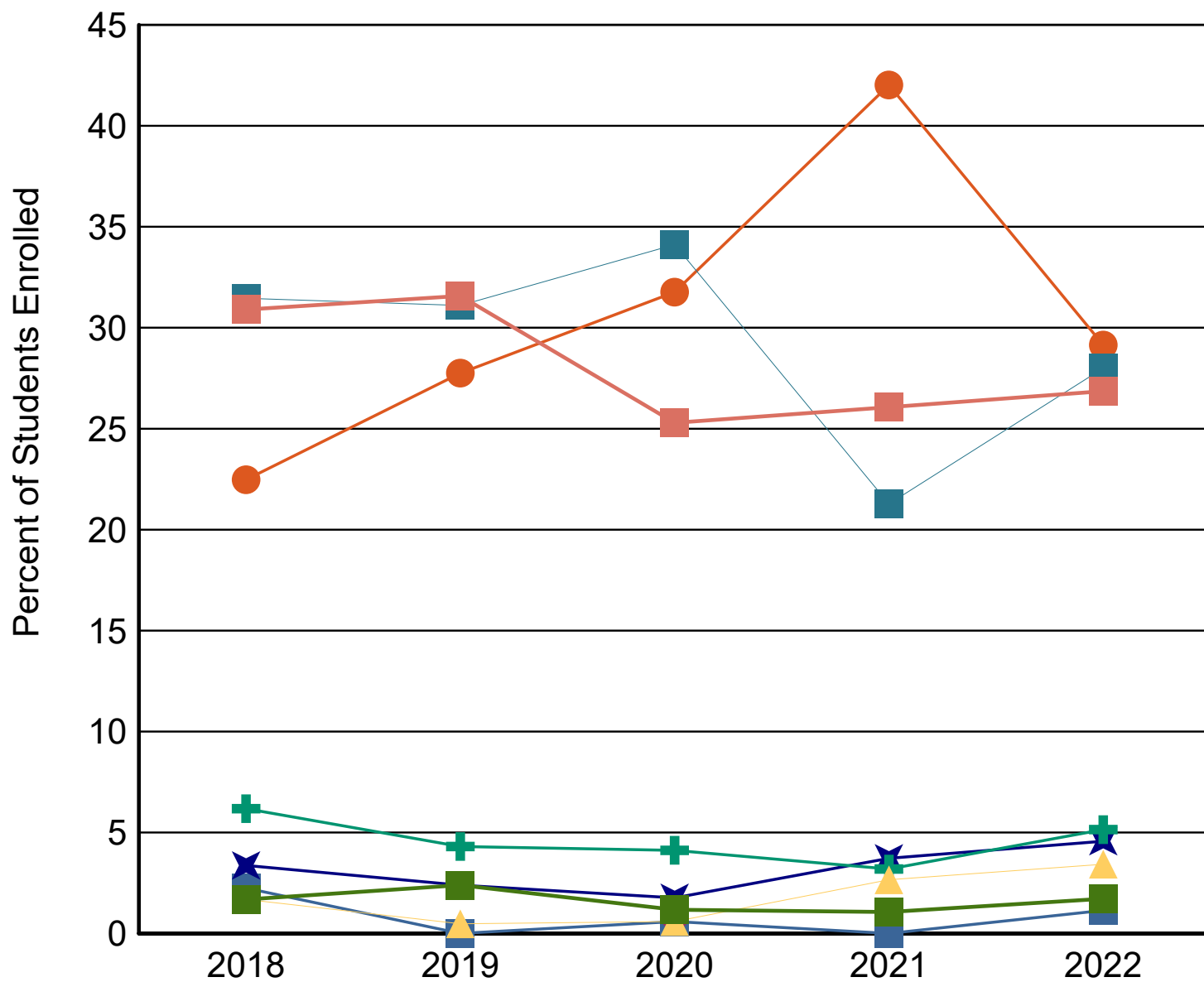




# First Time Doctoral Accepted by Ethnicity



# First Time Doctoral Enrolled by Ethnicity



## First Time Doctoral Applied, Accepted, and Enrolled by Gender

		2018	2019	2020	2021	2022
<b>Female</b>	<b>Applied</b>	257	311	251	293	305
	<b>Accepted</b>	141	153	133	155	163
	<b>% Accepted</b>	55%	49%	53%	53%	53%
	<b>Enrolled</b>	88	103	74	112	95
	<b>% Enrolled</b>	62%	67%	56%	72%	58%
<b>Male</b>	<b>Applied</b>	316	374	303	320	297
	<b>Accepted</b>	160	183	171	135	145
	<b>% Accepted</b>	51%	49%	56%	42%	49%
	<b>Enrolled</b>	90	106	96	76	80
	<b>% Enrolled</b>	56%	58%	56%	56%	55%
<b>Total</b>	<b>Applied</b>	573	685	554	613	602
	<b>Accepted</b>	301	336	304	290	308
	<b>% Accepted</b>	53%	49%	55%	47%	51%
	<b>Enrolled</b>	178	209	170	188	175
	<b>% Enrolled</b>	59%	62%	56%	65%	57%

## First Time Doctoral Applied, Accepted, and Enrolled by Economic Region

		2018	2019	2020	2021	2022
<b>Alamo</b>	<b>Applied</b>	180	216	176	209	184
	<b>Accepted</b>	122	134	121	131	123
	<b>% Accepted</b>	68%	62%	69%	63%	67%
	<b>Enrolled</b>	96	103	95	107	96
	<b>% Enrolled</b>	79%	77%	79%	82%	78%
<b>Capital</b>	<b>Applied</b>	16	25	21	21	25
	<b>Accepted</b>	11	15	14	9	14
	<b>% Accepted</b>	69%	60%	67%	43%	56%
	<b>Enrolled</b>	7	6	5	4	8
	<b>% Enrolled</b>	64%	40%	36%	44%	57%
<b>Central Texas</b>	<b>Applied</b>	2	2	4	6	9
	<b>Accepted</b>	2	1	0	3	4
	<b>% Accepted</b>	100%	50%	0%	50%	44%
	<b>Enrolled</b>	0	1	0	0	2
	<b>% Enrolled</b>	0%	100%		0%	50%
<b>Gulf Coast</b>	<b>Applied</b>	11	23	13	24	23
	<b>Accepted</b>	6	7	6	10	7
	<b>% Accepted</b>	55%	30%	46%	42%	30%
	<b>Enrolled</b>	4	4	4	4	4
	<b>% Enrolled</b>	67%	57%	67%	40%	57%
<b>High Plains</b>	<b>Applied</b>	1	2	3	2	3
	<b>Accepted</b>	0	0	2	0	2
	<b>% Accepted</b>	0%	0%	67%	0%	67%
	<b>Enrolled</b>	0	0	0	0	1
	<b>% Enrolled</b>			0%		50%
<b>Metroplex</b>	<b>Applied</b>	12	13	9	12	22
	<b>Accepted</b>	4	8	4	2	9
	<b>% Accepted</b>	33%	62%	44%	17%	41%
	<b>Enrolled</b>	1	2	0	1	6
	<b>% Enrolled</b>	25%	25%	0%	50%	67%
<b>Northwest</b>	<b>Applied</b>	1	1	0	0	1
	<b>Accepted</b>	1	1	0	0	0
	<b>% Accepted</b>	100%	100%	0%	0%	0%
	<b>Enrolled</b>	0	0	0	0	0
	<b>% Enrolled</b>	0%	0%			
<b>South Texas</b>	<b>Applied</b>	23	24	22	37	19
	<b>Accepted</b>	15	11	13	29	7
	<b>% Accepted</b>	65%	46%	59%	78%	37%
	<b>Enrolled</b>	10	7	7	25	5
	<b>% Enrolled</b>	67%	64%	54%	86%	71%
<b>Southeast</b>	<b>Applied</b>	1	1	2	0	2
	<b>Accepted</b>	0	1	0	0	1
	<b>% Accepted</b>	0%	100%	0%	0%	50%
	<b>Enrolled</b>	0	0	0	0	0
	<b>% Enrolled</b>		0%			0%
<b>Upper East</b>	<b>Applied</b>	2	3	1	2	0
	<b>Accepted</b>	1	1	1	2	0
	<b>% Accepted</b>	50%	33%	100%	100%	0%
	<b>Enrolled</b>	0	0	1	1	0
	<b>% Enrolled</b>	0%	0%	100%	50%	

		2018	2019	2020	2021	2022
<b>Upper Rio Grande</b>	<b>Applied</b>	1	4	2	2	3
	<b>Accepted</b>	0	3	1	1	1
	<b>% Accepted</b>	0%	75%	50%	50%	33%
	<b>Enrolled</b>	0	1	0	1	1
	<b>% Enrolled</b>		33%	0%	100%	100%
<b>West Texas</b>	<b>Applied</b>	0	0	2	0	1
	<b>Accepted</b>	0	0	1	0	1
	<b>% Accepted</b>	0%	0%	50%	0%	100%
	<b>Enrolled</b>	0	0	1	0	1
	<b>% Enrolled</b>			100%		100%
<b>Not in Texas</b>	<b>Applied</b>	323	371	299	298	310
	<b>Accepted</b>	139	154	141	103	139
	<b>% Accepted</b>	43%	42%	47%	35%	45%
	<b>Enrolled</b>	60	85	57	45	51
	<b>% Enrolled</b>	43%	55%	40%	44%	37%
<b>Total</b>	<b>Applied</b>	573	685	554	613	602
	<b>Accepted</b>	301	336	304	290	308
	<b>% Accepted</b>	53%	49%	55%	47%	51%
	<b>Enrolled</b>	178	209	170	188	175
	<b>% Enrolled</b>	59%	62%	56%	65%	57%

The map of the regions below comes from the Texas Comptroller's website at <http://www.window.state.tx.us>. A full listing of counties is on following page.



## Texas Economic Regions

**Alamo:** Atascosa, Bandera, Bexar, Calhoun, Comal, DeWitt, Frio, Gillespie, Goliad, Gonzales, Guadalupe, Jackson, Karnes, Kendall, Kerr, Lavaca, Medina, Victoria, Wilson

**Capital:** Bastrop, Blanco, Burnet, Caldwell, Fayette, Hays, Lee, Llano, Travis, Williamson

**Central Texas:** Bell, Bosque, Brazos, Burleson, Coryell, Falls, Freestone, Grimes, Hamilton, Hill, Lampasas, Leon, Limestone, Madison, McLennan, Milam, Mills, Robertson, San Saba, Washington

**Gulf Coast:** Austin, Brazoria, Chambers, Colorado, Fort Bend, Galveston, Harris, Liberty, Matagorda, Montgomery, Walker, Waller, Wharton

**High Plains:** Armstrong, Bailey, Briscoe, Carson, Castro, Childress, Cochran, Collingsworth, Crosby, Dallam, Deaf Smith, Dickens, Donley, Floyd, Garza, Gray, Hale, Hall, Hansford, Hartley, Hemphill, Hockley, Hutchinson, King, Lamb, Lipscomb, Lubbock, Lynn, Moore, Motley, Ochiltree, Oldham, Parmer, Potter, Randall, Roberts, Sherman, Swisher, Terry, Wheeler, Yoakum

**Metroplex:** Collin, Cooke, Dallas, Denton, Ellis, Erath, Fannin, Grayson, Hood, Hunt, Johnson, Kaufman, Navarro, Palo Pinto, Parker, Rockwall, Somervell, Tarrant, Wise

**Northwest:** Archer, Baylor, Brown, Callahan, Clay, Coleman, Comanche, Cottle, Eastland, Fisher, Foard, Hardeman, Haskell, Jack, Jones, Kent, Knox, Mitchell, Montague, Nolan, Runnels, Scurry, Shackelford, Stephens, Stonewall, Taylor, Throckmorton, Wichita, Wilbarger, Young

**South Texas:** Aransas, Bee, Brooks, Cameron, Dimmit, Duval, Edwards, Hidalgo, Jim Hogg, Jim Wells, Kenedy, Kinney, Kleberg, La Salle, Live Oak, Maverick, McMullen, Nueces, Real, Refugio, San Patricio, Starr, Uvalde, Val Verde, Webb, Willacy, Zapata, Zavala

**Southeast:** Angelina, Hardin, Houston, Jasper, Jefferson, Nacogdoches, Newton, Orange, Polk, Sabine, San Augustine, San Jacinto, Shelby, Trinity, Tyler

**Upper East:** Anderson, Bowie, Camp, Cass, Cherokee, Delta, Franklin, Gregg, Harrison, Henderson, Hopkins, Lamar, Marion, Morris, Panola, Rains, Red River, Rusk, Smith, Titus, Upshur, Van Zandt, Wood

**Upper Rio Grande:** Brewster, Culberson, El Paso, Hudspeth, Jeff Davis, Presidio

**West Texas:** Andrews, Borden, Coke, Concho, Crane, Crockett, Dawson, Ector, Gaines, Glasscock, Howard, Irion, Kimble, Loving, Martin, Mason, McCulloch, Menard, Midland, Pecos, Reagan, Reeves, Schleicher, Sterling, Sutton, Terrell, Tom Green, Upton, Ward, Winkler

## First Time Doctoral Applied, Accepted, and Enrolled by Residence Category

		2018	2019	2020	2021	2022
<b>Bexar County</b>	<b>Applied</b>	173	208	162	193	169
	<b>Accepted</b>	116	130	109	119	116
	<b>% Accepted</b>	67%	63%	67%	62%	69%
	<b>Enrolled</b>	90	100	87	95	93
	<b>% Enrolled</b>	78%	77%	80%	80%	80%
<b>Other Texas County</b>	<b>Applied</b>	77	106	93	122	123
	<b>Accepted</b>	46	52	54	68	53
	<b>% Accepted</b>	60%	49%	58%	56%	43%
	<b>Enrolled</b>	28	24	26	48	31
	<b>% Enrolled</b>	61%	46%	48%	71%	58%
<b>Out of State</b>	<b>Applied</b>	107	133	90	102	108
	<b>Accepted</b>	40	72	46	29	48
	<b>% Accepted</b>	37%	54%	51%	28%	44%
	<b>Enrolled</b>	17	38	20	13	22
	<b>% Enrolled</b>	43%	53%	43%	45%	46%
<b>Out of Country</b>	<b>Applied</b>	216	238	209	196	202
	<b>Accepted</b>	99	82	95	74	91
	<b>% Accepted</b>	46%	34%	45%	38%	45%
	<b>Enrolled</b>	43	47	37	32	29
	<b>% Enrolled</b>	43%	57%	39%	43%	32%
<b>Total</b>	<b>Applied</b>	573	685	554	613	602
	<b>Accepted</b>	301	336	304	290	308
	<b>% Applied</b>	53%	49%	55%	47%	51%
	<b>Enrolled</b>	178	209	170	188	175
	<b>% Enrolled</b>	59%	62%	56%	65%	57%

## First Time Doctoral Applied, Accepted, and Enrolled by Residence Category

