



# **Student Enrollment**

The UTSA Fact Book  
Office of Institutional Research and Analysis  
Fall 2022

## Student Enrollment

Enrollment data come from Census Day enrollment files. Students in fully online programs are included.

Enrollment information is also available from [interactive dashboards](#) at the Office of Institutional Research and Analysis web page.

Contact the Office the Institutional Research and Analysis with questions: [Institutional.Research@utsa.edu](mailto:Institutional.Research@utsa.edu)

### Number of Students Enrolled by Classification (Fall Semesters)

	Fa. 2018	Fa. 2019	Fa. 2020	Fa. 2021	Fa. 2022
<b>Freshmen</b>	6,169 19%	5,828 18%	6,349 18%	6,574 19%	6,865 20%
<b>Sophomore</b>	5,614 17%	5,694 17%	5,567 16%	5,416 16%	5,345 16%
<b>Junior</b>	6,777 21%	7,039 22%	7,546 22%	7,482 22%	7,411 22%
<b>Senior</b>	9,046 28%	9,371 29%	10,097 29%	9,994 29%	9,705 28%
<b>Post-Bac</b>	496 2%	457 1%	524 2%	445 1%	438 1%
<b>Masters</b>	3,340 10%	3,300 10%	3,760 11%	3,867 11%	3,644 11%
<b>Doctoral</b>	822 3%	905 3%	899 3%	956 3%	936 3%
<b>Total</b>	32,264 100%	32,594 100%	34,742 100%	34,734 100%	34,344 100%

### Semester Credit Hours of Students Enrolled by Classification (Fall Semesters)

	Fa. 2018	Fa. 2019	Fa. 2020	Fa. 2021	Fa. 2022
<b>Freshmen</b>	82,359 22%	75,869 20%	79,804 20%	80,215 21%	83,990 22%
<b>Sophomore</b>	71,894 19%	73,187 19%	71,655 18%	68,099 17%	66,643 17%
<b>Junior</b>	85,023 22%	87,357 23%	94,310 23%	90,560 23%	88,135 23%
<b>Senior</b>	105,874 28%	109,683 29%	118,358 29%	114,421 29%	109,202 28%
<b>Post-Bac</b>	3,865 1%	3,473 1%	3,957 1%	3,364 1%	3,402 1%
<b>Masters</b>	23,832 6%	24,137 6%	27,991 7%	27,904 7%	25,496 7%
<b>Doctoral</b>	5,507 1%	6,232 2%	6,085 2%	6,390 2%	6,325 2%
<b>Total</b>	378,354 100%	379,938 100%	402,160 100%	390,953 100%	383,193 100%

**Number of Students Enrolled by Level (Fall Semesters)**

	<b>Fa. 2018</b>	<b>Fa. 2019</b>	<b>Fa. 2020</b>	<b>Fa. 2021</b>	<b>Fa. 2022</b>
<b>Undergraduate</b>	27,606 86%	27,932 86%	29,559 85%	29,466 85%	29,326 85%
<b>Post-Bac</b>	496 2%	457 1%	524 2%	445 1%	438 1%
<b>Masters</b>	3,340 10%	3,300 10%	3,760 11%	3,867 11%	3,644 11%
<b>Doctoral</b>	822 3%	905 3%	899 3%	956 3%	936 3%
<b>Total</b>	32,264 100%	32,594 100%	34,742 100%	34,734 100%	34,344 100%

**Semester Credit Hours Students by Level (Fall Semesters)**

	<b>Fa. 2018</b>	<b>Fa. 2019</b>	<b>Fa. 2020</b>	<b>Fa. 2021</b>	<b>Fa. 2022</b>
<b>Undergraduate</b>	345,150 91%	346,096 91%	364,127 91%	353,295 90%	347,970 91%
<b>Post-Bac</b>	3,865 1%	3,473 1%	3,957 1%	3,364 1%	3,402 1%
<b>Masters</b>	23,832 6%	24,137 6%	27,991 7%	27,904 7%	25,496 7%
<b>Doctoral</b>	5,507 1%	6,232 2%	6,085 2%	6,390 2%	6,325 2%
<b>Total</b>	378,354 100%	379,938 100%	402,160 100%	390,953 100%	383,193 100%

**Number of Students Enrolled by Course Load (Fall Semesters)**

	<b>Fa. 2018</b>	<b>Fa. 2019</b>	<b>Fa. 2020</b>	<b>Fa. 2021</b>	<b>Fa. 2022</b>
<b>Full Time</b>	24,468 76%	24,484 75%	25,333 73%	24,350 70%	23,882 70%
<b>Part Time</b>	7,796 24%	8,110 25%	9,409 27%	10,384 30%	10,462 30%
<b>Total</b>	32,264 100%	32,594 100%	34,742 100%	34,734 100%	34,344 100%

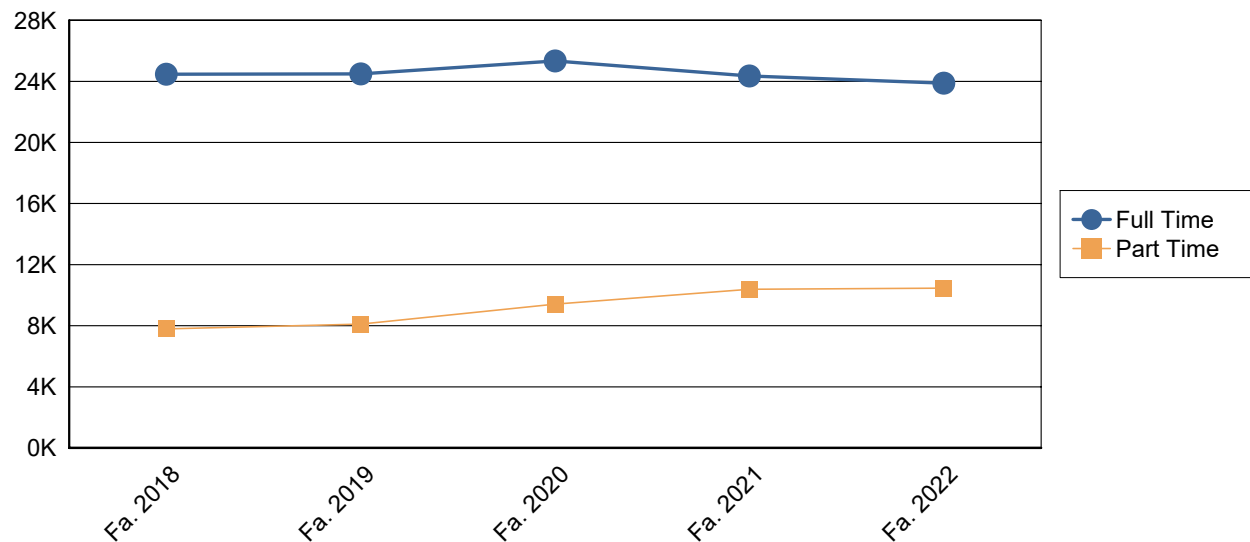
**Semester Credit Hours Students by Course Load (Fall Semesters)**

	<b>Fa. 2018</b>	<b>Fa. 2019</b>	<b>Fa. 2020</b>	<b>Fa. 2021</b>	<b>Fa. 2022</b>
<b>Full Time</b>	327,779 87%	326,387 86%	338,469 84%	319,600 82%	311,996 81%
<b>Part Time</b>	50,576 13%	53,551 14%	63,691 16%	71,353 18%	71,197 19%
<b>Total</b>	378,354 100%	379,938 100%	402,160 100%	390,953 100%	383,193 100%

## Number of Students Enrolled by Level and Course Load (Fall Semesters)

		Fa. 2018	Fa. 2019	Fa. 2020	Fa. 2021	Fa. 2022
Undergraduate	Full Time	22,403 81%	22,303 80%	22,895 77%	22,001 75%	21,605 74%
	Part Time	5,203 19%	5,629 20%	6,664 23%	7,465 25%	7,721 26%
	Total	27,606 100%	27,932 100%	29,559 100%	29,466 100%	29,326 100%
Post-Bac	Full Time	206 42%	183 40%	211 40%	187 42%	200 46%
	Part Time	290 58%	274 60%	313 60%	258 58%	238 54%
	Total	496 100%	457 100%	524 100%	445 100%	438 100%
Masters	Full Time	1,407 42%	1,488 45%	1,744 46%	1,689 44%	1,546 42%
	Part Time	1,933 58%	1,812 55%	2,016 54%	2,178 56%	2,098 58%
	Total	3,340 100%	3,300 100%	3,760 100%	3,867 100%	3,644 100%
Doctoral	Full Time	452 55%	510 56%	483 54%	473 49%	531 57%
	Part Time	370 45%	395 44%	416 46%	483 51%	405 43%
	Total	822 100%	905 100%	899 100%	956 100%	936 100%
Total		32,264 100%	32,594 100%	34,742 100%	34,734 100%	34,344 100%

## Enrollment by Course Load



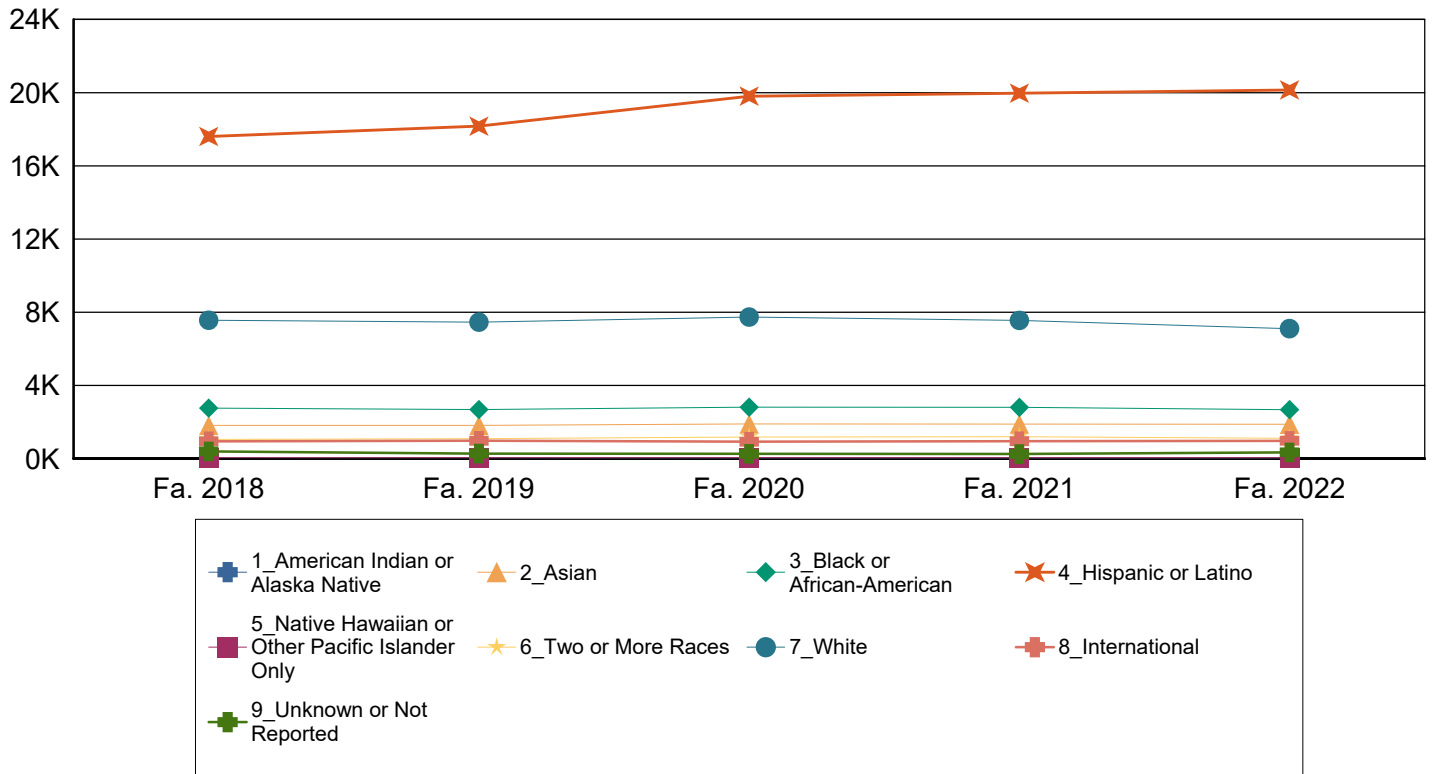
### Number of Students Enrolled by Ethnicity (Fall Semesters)

	Fa. 2018	Fa. 2019	Fa. 2020	Fa. 2021	Fa. 2022
<b>American Indian or Alaska Native</b>	65 0%	54 0%	51 0%	47 0%	45 0%
<b>Asian</b>	1,819 6%	1,821 6%	1,899 5%	1,890 5%	1,880 5%
<b>Black or African-American</b>	2,760 9%	2,686 8%	2,812 8%	2,803 8%	2,679 8%
<b>Hispanic or Latino</b>	17,604 55%	18,168 56%	19,809 57%	19,969 57%	20,148 59%
<b>Native Hawaiian or Other Pacific Islander</b>	57 0%	57 0%	54 0%	59 0%	54 0%
<b>Two or More Races</b>	1,050 3%	1,091 3%	1,187 3%	1,202 3%	1,114 3%
<b>White</b>	7,562 23%	7,460 23%	7,739 22%	7,555 22%	7,105 21%
<b>International</b>	950 3%	980 3%	927 3%	956 3%	974 3%
<b>Unknown or Not Reported</b>	397 1%	277 1%	264 1%	253 1%	345 1%
<b>Total</b>	32,264 100%	32,594 100%	34,742 100%	34,734 100%	34,344 100%

### Semester Credit Hours by Ethnicity (Fall Semesters)

	Fa. 2018	Fa. 2019	Fa. 2020	Fa. 2021	Fa. 2022
<b>American Indian or Alaska Native</b>	719 0%	633 0%	529 0%	477 0%	415 0%
<b>Asian</b>	22,868 6%	22,571 6%	23,339 6%	22,402 6%	22,177 6%
<b>Black or African-American</b>	33,919 9%	32,573 9%	33,756 8%	32,531 8%	30,924 8%
<b>Hispanic or Latino</b>	206,070 54%	211,661 56%	229,977 57%	225,493 58%	225,037 59%
<b>Native Hawaiian or Other Pacific Islander</b>	677 0%	689 0%	602 0%	679 0%	590 0%
<b>Two or More Races</b>	13,035 3%	13,508 4%	14,462 4%	14,231 4%	12,928 3%
<b>White</b>	87,391 23%	85,249 22%	87,372 22%	82,916 21%	77,492 20%
<b>International</b>	10,197 3%	10,529 3%	9,701 2%	9,893 3%	9,968 3%
<b>Unknown or Not Reported</b>	3,479 1%	2,525 1%	2,422 1%	2,331 1%	3,662 1%
<b>Total</b>	378,354 100%	379,938 100%	402,160 100%	390,953 100%	383,193 100%

# Enrollment by Ethnicity



## Enrollment by Level and Ethnicity (Fall Semesters)

		Fa. 2018	Fa. 2019	Fa. 2020	Fa. 2021	Fa. 2022
Undergraduate	American Indian or Alaska Native	51 0%	42 0%	37 0%	35 0%	33 0%
	Asian	1,617 6%	1,607 6%	1,650 6%	1,645 6%	1,650 6%
	Black or African-American	2,444 9%	2,370 8%	2,460 8%	2,430 8%	2,376 8%
	Hispanic or Latino	15,674 57%	16,186 58%	17,528 59%	17,551 60%	17,826 61%
	Native Hawaiian or Other Pacific	45 0%	48 0%	42 0%	46 0%	46 0%
	Two or More Races	965 3%	1,014 4%	1,089 4%	1,105 4%	1,005 3%
	White	6,177 22%	6,052 22%	6,181 21%	6,091 21%	5,721 20%
	International	480 2%	483 2%	427 1%	404 1%	398 1%
	Unknown or Not Reported	153 1%	130 0%	145 0%	159 1%	271 1%
	Total	27,606 100%	27,932 100%	29,559 100%	29,466 100%	29,326 100%

		Fa. 2018	Fa. 2019	Fa. 2020	Fa. 2021	Fa. 2022
<b>Post-Bac</b>	<b>American Indian or Alaska Native</b>	1 0%	0 0%	1 0%	2 0%	2 0%
	<b>Asian</b>	24 5%	26 6%	37 7%	26 6%	22 5%
	<b>Black or African-American</b>	41 8%	41 9%	45 9%	40 9%	32 7%
	<b>Hispanic or Latino</b>	212 43%	200 44%	220 42%	191 43%	192 44%
	<b>Native Hawaiian or Other Pacific</b>	1 0%	1 0%	1 0%	3 1%	1 0%
	<b>Two or More Races</b>	11 2%	8 2%	16 3%	8 2%	13 3%
	<b>White</b>	190 38%	170 37%	186 35%	159 36%	158 36%
	<b>International</b>	0 0%	3 1%	2 0%	6 1%	9 2%
	<b>Unknown or Not Reported</b>	16 3%	8 2%	16 3%	10 2%	9 2%
	<b>Total</b>	496 100%	457 100%	524 100%	445 100%	438 100%
<b>Masters</b>	<b>American Indian or Alaska Native</b>	8 0%	9 0%	9 0%	5 0%	4 0%
	<b>Asian</b>	146 4%	157 5%	183 5%	184 5%	176 5%
	<b>Black or African-American</b>	237 7%	237 7%	262 7%	288 7%	227 6%
	<b>Hispanic or Latino</b>	1,520 46%	1,560 47%	1,839 49%	1,955 51%	1,850 51%
	<b>Native Hawaiian or Other Pacific</b>	10 0%	7 0%	9 0%	8 0%	5 0%
	<b>Two or More Races</b>	65 2%	60 2%	73 2%	76 2%	78 2%
	<b>White</b>	968 29%	980 30%	1,110 30%	1,040 27%	965 26%
	<b>International</b>	194 6%	191 6%	201 5%	251 6%	293 8%
	<b>Unknown or Not Reported</b>	192 6%	99 3%	74 2%	60 2%	46 1%
	<b>Total</b>	3,340 100%	3,300 100%	3,760 100%	3,867 100%	3,644 100%
<b>Doctoral</b>	<b>American Indian or Alaska Native</b>	5 1%	3 0%	4 0%	5 1%	6 1%
	<b>Asian</b>	32 4%	31 3%	29 3%	35 4%	32 3%
	<b>Black or African-American</b>	38 5%	38 4%	45 5%	45 5%	44 5%



		Fa. 2018	Fa. 2019	Fa. 2020	Fa. 2021	Fa. 2022
<b>Doctoral</b>	<b>Hispanic or Latino</b>	198 24%	222 25%	222 25%	272 28%	280 30%
	<b>Native Hawaiian or Other Pacific</b>	1 0%	1 0%	2 0%	2 0%	2 0%
	<b>Two or More Races</b>	9 1%	9 1%	9 1%	13 1%	18 2%
	<b>White</b>	227 28%	258 29%	262 29%	265 28%	261 28%
	<b>International</b>	276 34%	303 33%	297 33%	295 31%	274 29%
	<b>Unknown or Not Reported</b>	36 4%	40 4%	29 3%	24 3%	19 2%
	<b>Total</b>	822 100%	905 100%	899 100%	956 100%	936 100%
<b>Total</b>		32,264 100%	32,594 100%	34,742 100%	34,734 100%	34,344 100%

#### Number of Students Enrolled by Gender (Fall Semesters)

	Fa. 2018	Fa. 2019	Fa. 2020	Fa. 2021	Fa. 2022
<b>Female</b>	16,393 51%	16,690 51%	18,043 52%	18,313 53%	18,048 53%
<b>Male</b>	15,871 49%	15,904 49%	16,699 48%	16,421 47%	16,296 47%
<b>Total</b>	32,264 100%	32,594 100%	34,742 100%	34,734 100%	34,344 100%

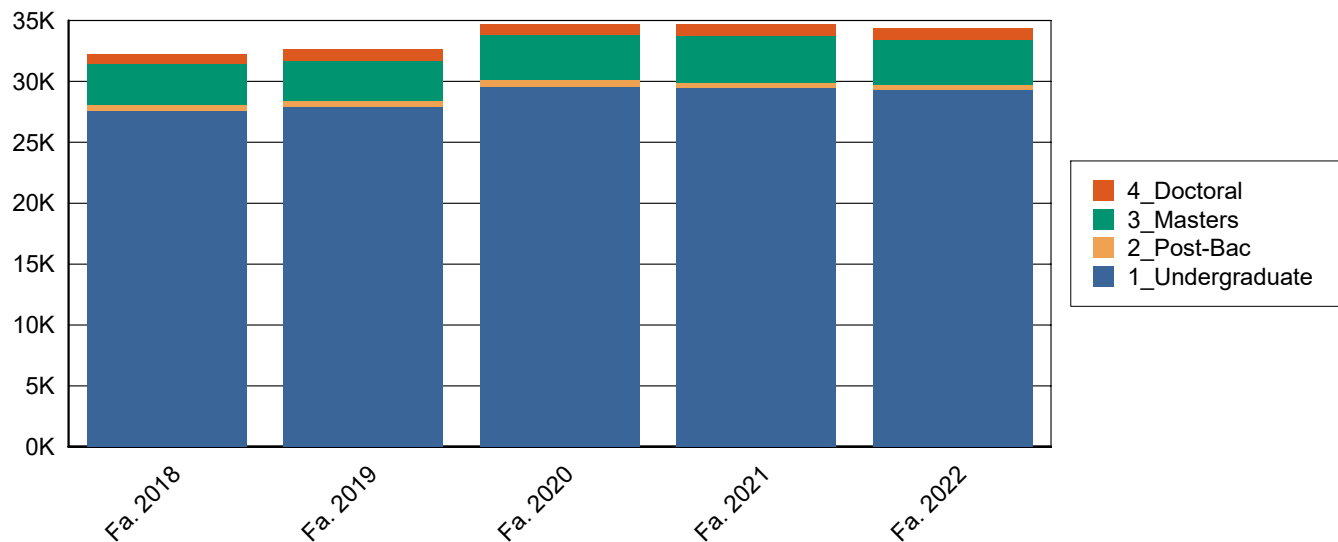
#### Semester Credit Hours of Students Enrolled by Gender (Fall Semesters)

	Fa. 2018	Fa. 2019	Fa. 2020	Fa. 2021	Fa. 2022
<b>Female</b>	192,335 51%	195,158 51%	210,225 52%	207,753 53%	202,815 53%
<b>Male</b>	186,020 49%	184,780 49%	191,935 48%	183,200 47%	180,378 47%
<b>Total</b>	378,354 100%	379,938 100%	402,160 100%	390,953 100%	383,193 100%

## Enrollment by Level and Gender (Fall Semesters)

		Fa. 2018	Fa. 2019	Fa. 2020	Fa. 2021	Fa. 2022
Undergraduate	Female	13,763 50%	14,058 50%	15,150 51%	15,402 52%	15,309 52%
	Male	13,843 50%	13,874 50%	14,409 49%	14,064 48%	14,017 48%
	Total	27,606 100%	27,932 100%	29,559 100%	29,466 100%	29,326 100%
Post-Bac	Female	270 54%	250 55%	281 54%	230 52%	230 53%
	Male	226 46%	207 45%	243 46%	215 48%	208 47%
	Total	496 100%	457 100%	524 100%	445 100%	438 100%
Masters	Female	1,968 59%	1,939 59%	2,182 58%	2,217 57%	2,048 56%
	Male	1,372 41%	1,361 41%	1,578 42%	1,650 43%	1,596 44%
	Total	3,340 100%	3,300 100%	3,760 100%	3,867 100%	3,644 100%
Doctoral	Female	392 48%	443 49%	430 48%	464 49%	461 49%
	Male	430 52%	462 51%	469 52%	492 51%	475 51%
	Total	822 100%	905 100%	899 100%	956 100%	936 100%
Total		32,264 100%	32,594 100%	34,742 100%	34,734 100%	34,344 100%

## Enrollment by Student Level



### Number of Students by Age Category (Fall Semesters)

	Fa. 2018	Fa. 2019	Fa. 2020	Fa. 2021	Fa. 2022
<b>Under 18</b>	304 1%	383 1%	488 1%	403 1%	357 1%
<b>18-22</b>	20,878 65%	20,951 64%	21,887 63%	22,048 63%	22,128 64%
<b>23-27</b>	6,201 19%	6,317 19%	6,967 20%	6,813 20%	6,694 19%
<b>28-32</b>	2,193 7%	2,198 7%	2,427 7%	2,368 7%	2,173 6%
<b>33-39</b>	1,404 4%	1,412 4%	1,549 4%	1,642 5%	1,567 5%
<b>40-49</b>	901 3%	952 3%	1,006 3%	1,032 3%	1,012 3%
<b>50+</b>	383 1%	381 1%	418 1%	428 1%	413 1%
<b>Total</b>	32,264 100%	32,594 100%	34,742 100%	34,734 100%	34,344 100%

### Semester Credit Hours by Age Category (Fall Semesters)

	Fa. 2018	Fa. 2019	Fa. 2020	Fa. 2021	Fa. 2022
<b>Under 18</b>	3,069 1%	3,320 1%	4,290 1%	3,874 1%	3,376 1%
<b>18-22</b>	273,442 72%	272,429 72%	282,888 70%	276,429 71%	274,774 72%
<b>23-27</b>	62,073 16%	63,602 17%	70,165 17%	66,430 17%	64,158 17%
<b>28-32</b>	19,376 5%	19,272 5%	21,650 5%	20,719 5%	18,590 5%
<b>33-39</b>	11,182 3%	11,685 3%	12,754 3%	13,273 3%	12,376 3%
<b>40-49</b>	6,762 2%	7,109 2%	7,641 2%	7,476 2%	7,336 2%
<b>50+</b>	2,450 1%	2,521 1%	2,772 1%	2,752 1%	2,583 1%
<b>Total</b>	378,354 100%	379,938 100%	402,160 100%	390,953 100%	383,193 100%

## Number of Students by Level and Age Category (Fall Semesters)

		Fa. 2018	Fa. 2019	Fa. 2020	Fa. 2021	Fa. 2022
<b>Undergraduate</b>	<b>Under 18</b>	304 1%	383 1%	488 2%	403 1%	357 1%
	<b>18-22</b>	20,525 74%	20,538 74%	21,411 72%	21,604 73%	21,705 74%
	<b>23-27</b>	4,426 16%	4,622 17%	4,946 17%	4,762 16%	4,717 16%
	<b>28-32</b>	1,196 4%	1,198 4%	1,356 5%	1,310 4%	1,198 4%
	<b>33-39</b>	652 2%	683 2%	782 3%	776 3%	749 3%
	<b>40-49</b>	388 1%	389 1%	440 1%	471 2%	456 2%
	<b>50+</b>	115 0%	119 0%	136 0%	140 0%	144 0%
	<b>Total</b>	27,606 100%	27,932 100%	29,559 100%	29,466 100%	29,326 100%
<b>Post-Bac</b>	<b>18-22</b>	34 7%	39 9%	28 5%	31 7%	32 7%
	<b>23-27</b>	160 32%	136 30%	181 35%	139 31%	144 33%
	<b>28-32</b>	110 22%	94 21%	108 21%	92 21%	81 18%
	<b>33-39</b>	78 16%	80 18%	86 16%	69 16%	71 16%
	<b>40-49</b>	68 14%	60 13%	69 13%	68 15%	64 15%
	<b>50+</b>	46 9%	48 11%	52 10%	46 10%	46 11%
	<b>Total</b>	496 100%	457 100%	524 100%	445 100%	438 100%
<b>Masters</b>	<b>18-22</b>	312 9%	352 11%	434 12%	397 10%	379 10%
	<b>23-27</b>	1,411 42%	1,354 41%	1,640 44%	1,719 44%	1,631 45%
	<b>28-32</b>	635 19%	628 19%	678 18%	680 18%	619 17%
	<b>33-39</b>	483 14%	453 14%	493 13%	578 15%	538 15%
	<b>40-49</b>	338 10%	365 11%	353 9%	342 9%	334 9%
	<b>50+</b>	161 5%	148 4%	162 4%	151 4%	143 4%
	<b>Total</b>	3,340 100%	3,300 100%	3,760 100%	3,867 100%	3,644 100%

		Fa. 2018	Fa. 2019	Fa. 2020	Fa. 2021	Fa. 2022
<b>Doctoral</b>	<b>18-22</b>	7 1%	22 2%	14 2%	16 2%	12 1%
	<b>23-27</b>	204 25%	205 23%	200 22%	193 20%	202 22%
	<b>28-32</b>	252 31%	278 31%	285 32%	286 30%	275 29%
	<b>33-39</b>	191 23%	196 22%	188 21%	219 23%	209 22%
	<b>40-49</b>	107 13%	138 15%	144 16%	151 16%	158 17%
	<b>50+</b>	61 7%	66 7%	68 8%	91 10%	80 9%
	<b>Total</b>	822 100%	905 100%	899 100%	956 100%	936 100%
<b>Total</b>		32,264 100%	32,594 100%	34,742 100%	34,734 100%	34,344 100%

# Semester Credit Hours of Students by Level and Age Category (Fall Semesters)

		Fa. 2018	Fa. 2019	Fa. 2020	Fa. 2021	Fa. 2022
<b>Undergraduate</b>	<b>Under 18</b>	3,069 1%	3,320 1%	4,290 1%	3,874 1%	3,376 1%
	<b>18-22</b>	270,250 78%	268,596 78%	278,426 76%	272,365 77%	271,134 78%
	<b>23-27</b>	48,438 14%	50,568 15%	54,440 15%	50,747 14%	49,344 14%
	<b>28-32</b>	12,495 4%	12,296 4%	14,166 4%	13,349 4%	11,842 3%
	<b>33-39</b>	6,488 2%	6,887 2%	7,629 2%	7,696 2%	7,100 2%
	<b>40-49</b>	3,498 1%	3,472 1%	4,072 1%	4,124 1%	4,018 1%
	<b>50+</b>	912 0%	957 0%	1,104 0%	1,140 0%	1,156 0%
	<b>Total</b>	345,150 100%	346,096 100%	364,127 100%	353,295 100%	347,970 100%
<b>Post-Bac</b>	<b>18-22</b>	238 6%	254 7%	193 5%	226 7%	229 7%
	<b>23-27</b>	1,348 35%	1,043 30%	1,357 34%	1,162 35%	1,176 35%
	<b>28-32</b>	896 23%	804 23%	865 22%	733 22%	671 20%
	<b>33-39</b>	601 16%	609 18%	697 18%	552 16%	617 18%
	<b>40-49</b>	500 13%	458 13%	526 13%	437 13%	426 13%
	<b>50+</b>	282 7%	305 9%	319 8%	254 8%	283 8%
	<b>Total</b>	3,865 100%	3,473 100%	3,957 100%	3,364 100%	3,402 100%
<b>Masters</b>	<b>18-22</b>	2,888 12%	3,378 14%	4,139 15%	3,691 13%	3,305 13%
	<b>23-27</b>	10,546 44%	10,227 42%	12,666 45%	12,895 46%	11,931 47%
	<b>28-32</b>	4,201 18%	4,164 17%	4,639 17%	4,523 16%	4,047 16%
	<b>33-39</b>	3,035 13%	2,964 12%	3,309 12%	3,745 13%	3,393 13%
	<b>40-49</b>	2,208 9%	2,447 10%	2,266 8%	2,154 8%	2,068 8%
	<b>50+</b>	954 4%	957 4%	972 3%	896 3%	752 3%
	<b>Total</b>	23,832 100%	24,137 100%	27,991 100%	27,904 100%	25,496 100%

		Fa. 2018	Fa. 2019	Fa. 2020	Fa. 2021	Fa. 2022
<b>Doctoral</b>	<b>18-22</b>	66 1%	201 3%	130 2%	147 2%	106 2%
	<b>23-27</b>	1,741 32%	1,764 28%	1,702 28%	1,626 25%	1,707 27%
	<b>28-32</b>	1,784 32%	2,008 32%	1,980 33%	2,114 33%	2,030 32%
	<b>33-39</b>	1,058 19%	1,225 20%	1,119 18%	1,280 20%	1,266 20%
	<b>40-49</b>	556 10%	732 12%	777 13%	761 12%	824 13%
	<b>50+</b>	302 5%	302 5%	377 6%	462 7%	392 6%
	<b>Total</b>	5,507 100%	6,232 100%	6,085 100%	6,390 100%	6,325 100%
<b>Total</b>		378,354 100%	379,938 100%	402,160 100%	390,953 100%	383,193 100%

#### Average Age by Level (Fall Semesters)

	Fa. 2018	Fa. 2019	Fa. 2020	Fa. 2021	Fa. 2022
<b>Undergraduate</b>	22	22	22	22	22
<b>Post-Bac</b>	33	34	33	33	33
<b>Masters</b>	30	30	30	30	30
<b>Doctoral</b>	34	34	34	35	35
<b>Total</b>	23	23	23	23	23

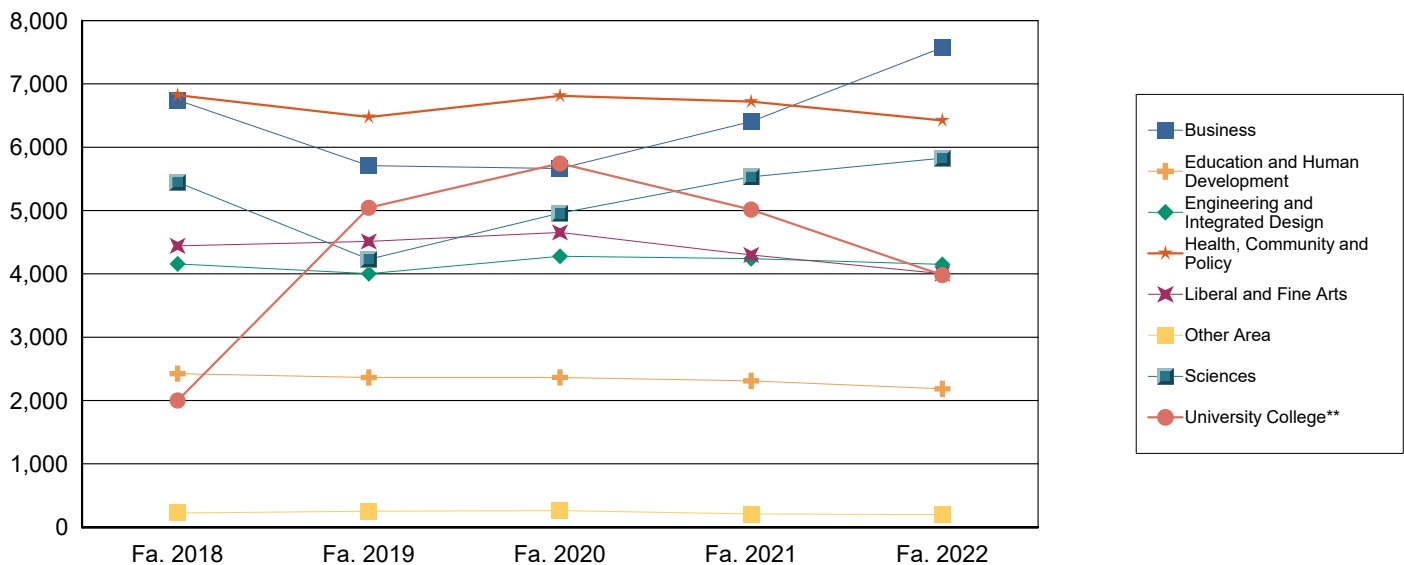
## Number of Students Enrolled Based on Intended Program of Study (Fall Semester)

	Fa. 2018	Fa. 2019	Fa. 2020	Fa. 2021	Fa. 2022
<b>Business</b>	6,743 21%	5,709 18%	5,664 16%	6,407 18%	7,574 22%
<b>Education and Human Development</b>	2,425 8%	2,364 7%	2,365 7%	2,311 7%	2,185 6%
<b>Engineering and Integrated Design</b>	4,158 13%	4,003 12%	4,278 12%	4,241 12%	4,149 12%
<b>Health, Community and Policy</b>	6,823 21%	6,477 20%	6,812 20%	6,720 19%	6,424 19%
<b>Liberal and Fine Arts</b>	4,443 14%	4,513 14%	4,656 13%	4,299 12%	4,005 12%
<b>Other Area*</b>	225 1%	251 1%	263 1%	208 1%	199 1%
<b>Sciences</b>	5,446 17%	4,232 13%	4,960 14%	5,532 16%	5,827 17%
<b>University College**</b>	2,001 6%	5,045 15%	5,744 17%	5,016 14%	3,981 12%
<b>Total</b>	32,264 100%	32,594 100%	34,742 100%	34,734 100%	34,344 100%

\* Other Area includes students who are majoring in Honors Studies, Translational Science and students who are not degree seeking. These were combined to maintain student confidentiality.

\*\*Increase in student enrollment in University College in Fall 2019 due to studies program implementation.

## Enrollment by College





## Number of University College Studies Students by Intended Program of Study

	Fa. 2019	Fa. 2020	Fa. 2021	Fa. 2022
<b>Accounting</b>	170 4%	257 5%	144 4%	72 2%
<b>Actuarial Science</b>	17 0%	17 0%	26 1%	7 0%
<b>Biochemistry</b>	56 1%	127 3%	106 3%	50 2%
<b>Biomedical Engineering</b>	42 1%	50 1%	38 1%	81 3%
<b>Business Analytics</b>	0 0%	0 0%	145 4%	50 2%
<b>Chemical Engineering</b>	23 1%	35 1%	26 1%	27 1%
<b>Civil Engineering</b>	65 2%	70 1%	91 2%	117 4%
<b>Computer Engineering</b>	35 1%	64 1%	56 1%	64 2%
<b>Computer Science</b>	256 6%	531 11%	270 7%	274 9%
<b>Construction Science &amp; Management</b>	18 0%	33 1%	52 1%	43 1%
<b>Cyber Security</b>	235 6%	450 9%	264 6%	134 5%
<b>Economics</b>	30 1%	45 1%	47 1%	18 1%
<b>Electrical Engineering</b>	30 1%	53 1%	58 1%	68 2%
<b>Finance</b>	147 4%	285 6%	186 5%	77 3%
<b>Health</b>	142 4%	98 2%	39 1%	9 0%
<b>Information Systems</b>	42 1%	71 1%	55 1%	25 1%
<b>Kinesiology</b>	215 5%	178 4%	58 1%	12 0%
<b>Management</b>	337 8%	509 10%	350 9%	159 5%
<b>Marketing</b>	248 6%	367 8%	317 8%	148 5%
<b>Mechanical Engineering</b>	114 3%	152 3%	154 4%	185 6%
<b>Music</b>	27 1%	45 1%	28 1%	37 1%

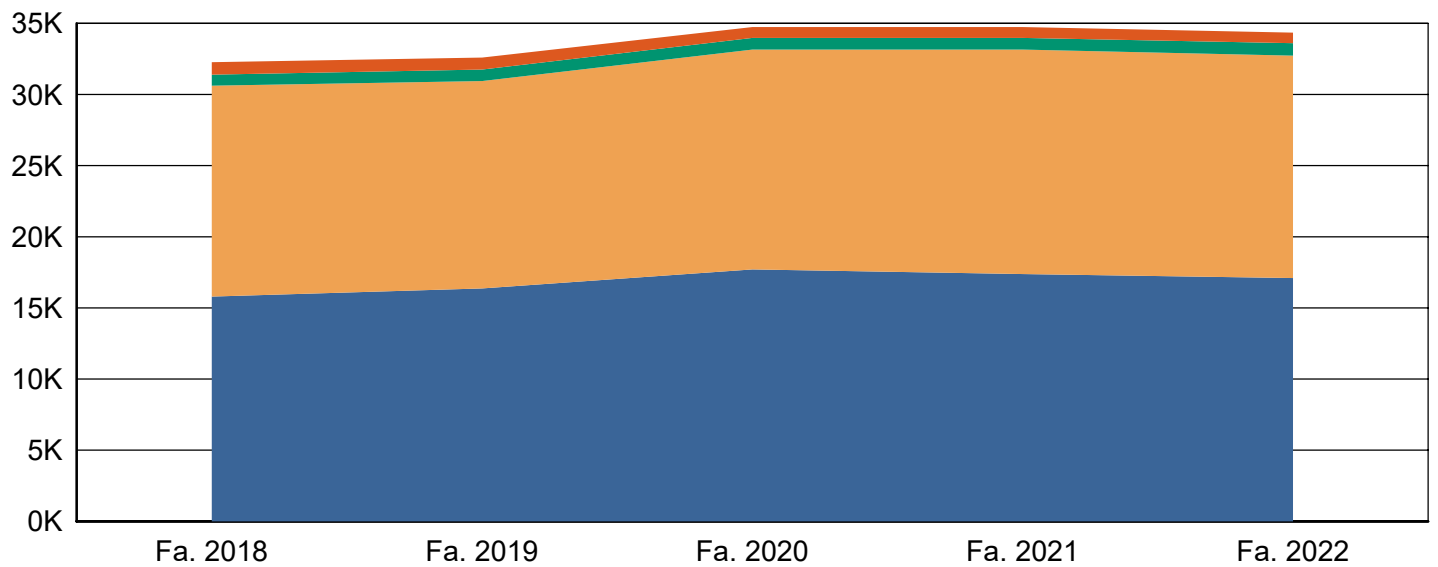
	Fa. 2019	Fa. 2020	Fa. 2021	Fa. 2022
<b>Nutrition and Dietetics</b>	46 1%	89 2%	121 3%	104 3%
<b>Online Cyber Security</b>	0 0%	17 0%	61 2%	53 2%
<b>Operations and Supply Chain Management</b>	0 0%	0 0%	0 0%	6 0%
<b>Other Program</b>	883 22%	278 6%	99 2%	10 0%
<b>Real Estate Finance &amp; Development</b>	46 1%	83 2%	88 2%	59 2%
<b>Undeclared</b>	749 19%	986 20%	1,185 29%	1,088 37%
<b>Total</b>	3,973 100%	4,890 100%	4,064 100%	2,977 100%

Note: Other program combines intended programs with fewer than 5 students. These were combined to maintain student confidentiality.

## Enrollment by Residence Category (Fall Semesters)

	Fa. 2018	Fa. 2019	Fa. 2020	Fa. 2021	Fa. 2022
<b>Bexar County</b>	15,799 49%	16,370 50%	17,708 51%	17,378 50%	17,104 50%
<b>Other Texas County</b>	14,817 46%	14,579 45%	15,448 44%	15,777 45%	15,625 45%
<b>Out of State</b>	771 2%	801 2%	822 2%	820 2%	874 3%
<b>Out of Country</b>	877 3%	844 3%	764 2%	759 2%	741 2%
<b>Total</b>	32,264 100%	32,594 100%	34,742 100%	34,734 100%	34,344 100%

## Enrollment by Residence



## Students Enrolled by Texas Economic Region (Fall Semesters)

	Fa. 2018	Fa. 2019	Fa. 2020	Fa. 2021	Fa. 2022
<b>Alamo</b>	18,280 57%	18,807 58%	20,357 59%	20,057 58%	19,726 57%
<b>Capital</b>	2,099 7%	2,125 7%	2,338 7%	2,414 7%	2,395 7%
<b>Central Texas</b>	479 1%	492 2%	531 2%	543 2%	530 2%
<b>Gulf Coast</b>	3,900 12%	3,737 11%	3,819 11%	3,865 11%	3,867 11%
<b>High Plains</b>	69 0%	80 0%	95 0%	86 0%	120 0%
<b>Metroplex</b>	842 3%	807 2%	869 3%	816 2%	785 2%
<b>Northwest</b>	76 0%	77 0%	84 0%	86 0%	80 0%
<b>South Texas</b>	4,125 13%	4,086 13%	4,263 12%	4,455 13%	4,392 13%
<b>Southeast</b>	99 0%	97 0%	101 0%	101 0%	95 0%
<b>Upper East</b>	74 0%	78 0%	96 0%	95 0%	95 0%
<b>Upper Rio Grande</b>	382 1%	357 1%	362 1%	401 1%	394 1%
<b>West Texas</b>	191 1%	206 1%	241 1%	236 1%	250 1%
<b>Not In Texas</b>	1,648 5%	1,645 5%	1,586 5%	1,579 5%	1,615 5%
<b>Total</b>	32,264 100%	32,594 100%	34,742 100%	34,734 100%	34,344 100%



The map of the regions below comes from the Texas Comptroller's website at <http://www.window.state.tx.us>. A full listing of counties is available on the following page.

## Texas Economic Regions

**Alamo:** Atascosa, Bandera, Bexar, Calhoun, Comal, DeWitt, Frio, Gillespie, Goliad, Gonzales, Guadalupe, Jackson, Karnes, Kendall, Kerr, Lavaca, Medina, Victoria, Wilson

**Capital:** Bastrop, Blanco, Burnet, Caldwell, Fayette, Hays, Lee, Llano, Travis, Williamson

**Central Texas:** Bell, Bosque, Brazos, Burleson, Coryell, Falls, Freestone, Grimes, Hamilton, Hill, Lampasas, Leon, Limestone, Madison, McLennan, Milam, Mills, Robertson, San Saba, Washington

**Gulf Coast:** Austin, Brazoria, Chambers, Colorado, Fort Bend, Galveston, Harris, Liberty, Matagorda, Montgomery, Walker, Waller, Wharton

**High Plains:** Armstrong, Bailey, Briscoe, Carson, Castro, Childress, Cochran, Collingsworth, Crosby, Dallam, Deaf Smith, Dickens, Donley, Floyd, Garza, Gray, Hale, Hall, Hansford, Hartley, Hemphill, Hockley, Hutchinson, King, Lamb, Lipscomb, Lubbock, Lynn, Moore, Motley, Ochiltree, Oldham, Parmer, Potter, Randall, Roberts, Sherman, Swisher, Terry, Wheeler, Yoakum

**Metroplex:** Collin, Cooke, Dallas, Denton, Ellis, Erath, Fannin, Grayson, Hood, Hunt, Johnson, Kaufman, Navarro, Palo Pinto, Parker, Rockwall, Somervell, Tarrant, Wise

**Northwest:** Archer, Baylor, Brown, Callahan, Clay, Coleman, Comanche, Cottle, Eastland, Fisher, Foard, Hardeman, Haskell, Jack, Jones, Kent, Knox, Mitchell, Montague, Nolan, Runnels, Scurry, Shackelford, Stephens, Stonewall, Taylor, Throckmorton, Wichita, Wilbarger, Young

**South Texas:** Aransas, Bee, Brooks, Cameron, Dimmit, Duval, Edwards, Hidalgo, Jim Hogg, Jim Wells, Kenedy, Kinney, Kleberg, La Salle, Live Oak, Maverick, McMullen, Nueces, Real, Refugio, San Patricio, Starr, Uvalde, Val Verde, Webb, Willacy, Zapata, Zavala

**Southeast:** Angelina, Hardin, Houston, Jasper, Jefferson, Nacogdoches, Newton, Orange, Polk, Sabine, San Augustine, San Jacinto, Shelby, Trinity, Tyler

**Upper East:** Anderson, Bowie, Camp, Cass, Cherokee, Delta, Franklin, Gregg, Harrison, Henderson, Hopkins, Lamar, Marion, Morris, Panola, Rains, Red River, Rusk, Smith, Titus, Upshur, Van Zandt, Wood

**Upper Rio Grande:** Brewster, Culberson, El Paso, Hudspeth, Jeff Davis, Presidio

**West Texas:** Andrews, Borden, Coke, Concho, Crane, Crockett, Dawson, Ector, Gaines, Glasscock, Howard, Irion, Kimble, Loving, Martin, Mason, McCulloch, Menard, Midland, Pecos, Reagan, Reeves, Schleicher, Sterling, Sutton, Terrell, Tom Green, Upton, Ward, Winkler

## Current College Structure Enrollment by Gender (Fall Semesters)

		Fa. 2018	Fa. 2019	Fa. 2020	Fa. 2021	Fa. 2022
<b>Business</b>	<b>Female</b>	2,525 37%	2,133 37%	2,144 38%	2,554 40%	2,989 39%
	<b>Male</b>	4,218 63%	3,576 63%	3,520 62%	3,853 60%	4,585 61%
	<b>Total</b>	6,743 100%	5,709 100%	5,664 100%	6,407 100%	7,574 100%
<b>Education and Human Development</b>	<b>Female</b>	2,069 85%	2,007 85%	2,021 85%	1,972 85%	1,867 85%
	<b>Male</b>	356 15%	357 15%	344 15%	339 15%	318 15%
	<b>Total</b>	2,425 100%	2,364 100%	2,365 100%	2,311 100%	2,185 100%
<b>Engineering and Integrated Design</b>	<b>Female</b>	1,001 24%	1,058 26%	1,222 29%	1,296 31%	1,316 32%
	<b>Male</b>	3,157 76%	2,945 74%	3,056 71%	2,945 69%	2,833 68%
	<b>Total</b>	4,158 100%	4,003 100%	4,278 100%	4,241 100%	4,149 100%
<b>Health, Community and Policy</b>	<b>Female</b>	4,498 66%	4,278 66%	4,590 67%	4,631 69%	4,465 70%
	<b>Male</b>	2,325 34%	2,199 34%	2,222 33%	2,089 31%	1,959 30%
	<b>Total</b>	6,823 100%	6,477 100%	6,812 100%	6,720 100%	6,424 100%
<b>Liberal and Fine Arts</b>	<b>Female</b>	2,640 59%	2,726 60%	2,838 61%	2,675 62%	2,535 63%
	<b>Male</b>	1,803 41%	1,787 40%	1,818 39%	1,624 38%	1,470 37%
	<b>Total</b>	4,443 100%	4,513 100%	4,656 100%	4,299 100%	4,005 100%
<b>Other Area</b>	<b>Female</b>	136 60%	139 55%	146 56%	98 47%	110 55%
	<b>Male</b>	89 40%	112 45%	117 44%	110 53%	89 45%
	<b>Total</b>	225 100%	251 100%	263 100%	208 100%	199 100%
<b>Sciences</b>	<b>Female</b>	2,538 47%	1,882 44%	2,506 51%	2,794 51%	2,962 51%
	<b>Male</b>	2,908 53%	2,350 56%	2,454 49%	2,738 49%	2,865 49%
	<b>Total</b>	5,446 100%	4,232 100%	4,960 100%	5,532 100%	5,827 100%

		Fa. 2018	Fa. 2019	Fa. 2020	Fa. 2021	Fa. 2022
<b>University College**</b>	<b>Female</b>	986 49%	2,467 49%	2,576 45%	2,293 46%	1,804 45%
	<b>Male</b>	1,015 51%	2,578 51%	3,168 55%	2,723 54%	2,177 55%
	<b>Total</b>	2,001 100%	5,045 100%	5,744 100%	5,016 100%	3,981 100%
<b>Total</b>		32,264 100%	32,594 100%	34,742 100%	34,734 100%	34,344 100%

\* Other Area includes students who are majoring in Honors Studies, Translational Science and students who are not degree seeking. These were combined to maintain student confidentiality.

\*\*Increase in student enrollment in University College in Fall 2019 due to studies program implementation.

## Current College Structure Enrollment by Ethnicity (Fall Semesters)

		Fa. 2018	Fa. 2019	Fa. 2020	Fa. 2021	Fa. 2022
<b>Business</b>	<b>American Indian or Alaska Native</b>	15 0%	13 0%	12 0%	12 0%	14 0%
	<b>Asian</b>	423 6%	393 7%	383 7%	418 7%	483 6%
	<b>Black or African-American</b>	513 8%	437 8%	427 8%	481 8%	577 8%
	<b>Hispanic or Latino</b>	3,402 50%	2,875 50%	2,916 51%	3,429 54%	4,187 55%
	<b>Native Hawaiian or Other Pacific</b>	18 0%	19 0%	16 0%	18 0%	17 0%
	<b>Two or More Races</b>	206 3%	194 3%	171 3%	207 3%	234 3%
	<b>White</b>	1,818 27%	1,498 26%	1,473 26%	1,558 24%	1,741 23%
	<b>International</b>	243 4%	213 4%	208 4%	229 4%	253 3%
	<b>Unknown or Not Reported</b>	105 2%	67 1%	58 1%	55 1%	68 1%
	<b>Total</b>	6,743 100%	5,709 100%	5,664 100%	6,407 100%	7,574 100%
<b>Education and Human Development</b>	<b>American Indian or Alaska Native</b>	7 0%	7 0%	5 0%	7 0%	6 0%
	<b>Asian</b>	46 2%	42 2%	44 2%	40 2%	40 2%
	<b>Black or African-American</b>	158 7%	150 6%	153 6%	159 7%	137 6%
	<b>Hispanic or Latino</b>	1,475 61%	1,460 62%	1,474 62%	1,454 63%	1,430 65%
	<b>Native Hawaiian or Other Pacific</b>	0 0%	0 0%	1 0%	1 0%	2 0%
	<b>Two or More Races</b>	51 2%	40 2%	45 2%	46 2%	41 2%
	<b>White</b>	591 24%	589 25%	586 25%	550 24%	486 22%
	<b>International</b>	27 1%	34 1%	29 1%	33 1%	31 1%
	<b>Unknown or Not Reported</b>	70 3%	42 2%	28 1%	21 1%	12 1%
	<b>Total</b>	2,425 100%	2,364 100%	2,365 100%	2,311 100%	2,185 100%
<b>Engineering and Integrated Design</b>	<b>American Indian or Alaska Native</b>	12 0%	6 0%	7 0%	7 0%	7 0%
	<b>Asian</b>	248 6%	256 6%	239 6%	256 6%	211 5%
	<b>Black or African-American</b>	269 6%	233 6%	238 6%	251 6%	226 5%



		Fa. 2018	Fa. 2019	Fa. 2020	Fa. 2021	Fa. 2022
<b>Engineering and Integrated Design</b>	<b>Hispanic or Latino</b>	2,205 53%	2,130 53%	2,347 55%	2,354 56%	2,400 58%
	<b>Native Hawaiian or Other Pacific</b>	7 0%	5 0%	9 0%	9 0%	8 0%
	<b>Two or More Races</b>	127 3%	108 3%	133 3%	128 3%	106 3%
	<b>White</b>	914 22%	902 23%	944 22%	898 21%	861 21%
	<b>International</b>	320 8%	323 8%	321 8%	304 7%	282 7%
	<b>Unknown or Not Reported</b>	56 1%	40 1%	40 1%	34 1%	48 1%
	<b>Total</b>	4,158 100%	4,003 100%	4,278 100%	4,241 100%	4,149 100%
<b>Health, Community and Policy</b>	<b>American Indian or Alaska Native</b>	12 0%	11 0%	6 0%	8 0%	2 0%
	<b>Asian</b>	334 5%	301 5%	299 4%	296 4%	295 5%
	<b>Black or African-American</b>	847 12%	747 12%	752 11%	705 10%	635 10%
	<b>Hispanic or Latino</b>	4,035 59%	3,978 61%	4,244 62%	4,200 63%	4,149 65%
	<b>Native Hawaiian or Other Pacific</b>	10 0%	6 0%	10 0%	12 0%	6 0%
	<b>Two or More Races</b>	209 3%	211 3%	241 4%	247 4%	200 3%
	<b>White</b>	1,277 19%	1,126 17%	1,170 17%	1,149 17%	1,026 16%
	<b>International</b>	53 1%	57 1%	58 1%	66 1%	62 1%
	<b>Unknown or Not Reported</b>	46 1%	40 1%	32 0%	37 1%	49 1%
	<b>Total</b>	6,823 100%	6,477 100%	6,812 100%	6,720 100%	6,424 100%
<b>Liberal and Fine Arts</b>	<b>American Indian or Alaska Native</b>	4 0%	5 0%	6 0%	6 0%	3 0%
	<b>Asian</b>	141 3%	146 3%	145 3%	126 3%	114 3%
	<b>Black or African-American</b>	408 9%	352 8%	365 8%	343 8%	302 8%
	<b>Hispanic or Latino</b>	2,547 57%	2,667 59%	2,766 59%	2,576 60%	2,413 60%
	<b>Native Hawaiian or Other Pacific</b>	4 0%	9 0%	6 0%	5 0%	5 0%
	<b>Two or More Races</b>	142 3%	170 4%	197 4%	172 4%	159 4%
	<b>White</b>	1,115 25%	1,093 24%	1,105 24%	1,007 23%	932 23%

		Fa. 2018	Fa. 2019	Fa. 2020	Fa. 2021	Fa. 2022
<b>Liberal and Fine Arts</b>	<b>International</b>	37 1%	42 1%	39 1%	48 1%	47 1%
	<b>Unknown or Not Reported</b>	45 1%	29 1%	27 1%	16 0%	30 1%
	<b>Total</b>	4,443 100%	4,513 100%	4,656 100%	4,299 100%	4,005 100%
<b>Other Area*</b>	<b>American Indian or Alaska Native</b>	0 0%	0 0%	1 0%	0 0%	1 1%
	<b>Asian</b>	15 7%	20 8%	28 11%	10 5%	10 5%
	<b>Black or African-American</b>	17 8%	24 10%	20 8%	18 9%	16 8%
	<b>Hispanic or Latino</b>	95 42%	121 48%	120 46%	99 48%	96 48%
	<b>Native Hawaiian or Other Pacific</b>	0 0%	0 0%	0 0%	0 0%	2 1%
	<b>Two or More Races</b>	8 4%	6 2%	8 3%	6 3%	9 5%
	<b>White</b>	73 32%	68 27%	77 29%	64 31%	49 25%
	<b>International</b>	15 7%	8 3%	0 0%	7 3%	15 8%
	<b>Unknown or Not Reported</b>	2 1%	4 2%	9 3%	4 2%	1 1%
	<b>Total</b>	225 100%	251 100%	263 100%	208 100%	199 100%
<b>Sciences</b>	<b>American Indian or Alaska Native</b>	12 0%	7 0%	8 0%	5 0%	8 0%
	<b>Asian</b>	464 9%	347 8%	418 8%	458 8%	485 8%
	<b>Black or African-American</b>	364 7%	251 6%	330 7%	364 7%	417 7%
	<b>Hispanic or Latino</b>	2,759 51%	2,071 49%	2,528 51%	2,890 52%	3,074 53%
	<b>Native Hawaiian or Other Pacific</b>	14 0%	7 0%	7 0%	5 0%	7 0%
	<b>Two or More Races</b>	234 4%	170 4%	187 4%	216 4%	224 4%
	<b>White</b>	1,314 24%	1,132 27%	1,257 25%	1,340 24%	1,314 23%
	<b>International</b>	219 4%	212 5%	184 4%	207 4%	227 4%
	<b>Unknown or Not Reported</b>	66 1%	35 1%	41 1%	47 1%	71 1%
	<b>Total</b>	5,446 100%	4,232 100%	4,960 100%	5,532 100%	5,827 100%
<b>University College**</b>	<b>American Indian or Alaska Native</b>	3 0%	5 0%	6 0%	2 0%	4 0%

		Fa. 2018	Fa. 2019	Fa. 2020	Fa. 2021	Fa. 2022
University College**	Asian	148 7%	316 6%	343 6%	286 6%	242 6%
	Black or African-American	184 9%	492 10%	527 9%	482 10%	369 9%
	Hispanic or Latino	1,086 54%	2,866 57%	3,414 59%	2,967 59%	2,399 60%
	Native Hawaiian or Other Pacific	4 0%	11 0%	5 0%	9 0%	7 0%
	Two or More Races	73 4%	192 4%	205 4%	180 4%	141 4%
	White	460 23%	1,052 21%	1,127 20%	989 20%	696 17%
	International	36 2%	91 2%	88 2%	62 1%	57 1%
	Unknown or Not Reported	7 0%	20 0%	29 1%	39 1%	66 2%
	Total	2,001 100%	5,045 100%	5,744 100%	5,016 100%	3,981 100%
Total		32,264 100%	32,594 100%	34,742 100%	34,734 100%	34,344 100%

\* Other Area includes students who are majoring in Honors Studies, Translational Science and students who are not degree seeking. These were combined to maintain student confidentiality.

\*\*Increase in student enrollment in University College beginnig in Fall 2019 due to studies program implementation.

## Current College Structure Enrollment by Course Load (Fall Semesters)

		Fa. 2018	Fa. 2019	Fa. 2020	Fa. 2021	Fa. 2022
Business	Full Time	5,223 77%	4,293 75%	4,059 72%	4,479 70%	5,416 72%
	Part Time	1,520 23%	1,416 25%	1,605 28%	1,928 30%	2,158 28%
	Total	6,743 100%	5,709 100%	5,664 100%	6,407 100%	7,574 100%
Education and Human Development	Full Time	1,303 54%	1,301 55%	1,327 56%	1,261 55%	1,201 55%
	Part Time	1,122 46%	1,063 45%	1,038 44%	1,050 45%	984 45%
	Total	2,425 100%	2,364 100%	2,365 100%	2,311 100%	2,185 100%
Engineering and Integrated Design	Full Time	3,235 78%	3,060 76%	3,175 74%	3,066 72%	2,938 71%
	Part Time	923 22%	943 24%	1,103 26%	1,175 28%	1,211 29%
	Total	4,158 100%	4,003 100%	4,278 100%	4,241 100%	4,149 100%
Health, Community and Policy	Full Time	5,369 79%	5,035 78%	5,330 78%	5,116 76%	4,871 76%
	Part Time	1,454 21%	1,442 22%	1,482 22%	1,604 24%	1,553 24%
	Total	6,823 100%	6,477 100%	6,812 100%	6,720 100%	6,424 100%
Liberal and Fine Arts	Full Time	3,507 79%	3,553 79%	3,524 76%	3,070 71%	2,734 68%
	Part Time	936 21%	960 21%	1,132 24%	1,229 29%	1,271 32%
	Total	4,443 100%	4,513 100%	4,656 100%	4,299 100%	4,005 100%
Other Area*	Full Time	65 29%	57 23%	49 19%	58 28%	46 23%
	Part Time	160 71%	194 77%	214 81%	150 72%	153 77%
	Total	225 100%	251 100%	263 100%	208 100%	199 100%
Sciences	Full Time	4,223 78%	3,147 74%	3,743 75%	3,943 71%	4,228 73%
	Part Time	1,223 22%	1,085 26%	1,217 25%	1,589 29%	1,599 27%
	Total	5,446 100%	4,232 100%	4,960 100%	5,532 100%	5,827 100%

		Fa. 2018	Fa. 2019	Fa. 2020	Fa. 2021	Fa. 2022
<b>University College**</b>	<b>Full Time</b>	1,543 77%	4,038 80%	4,126 72%	3,357 67%	2,448 61%
	<b>Part Time</b>	458 23%	1,007 20%	1,618 28%	1,659 33%	1,533 39%
	<b>Total</b>	2,001 100%	5,045 100%	5,744 100%	5,016 100%	3,981 100%
<b>Total</b>		32,264 100%	32,594 100%	34,742 100%	34,734 100%	34,344 100%

\* Other Area includes students who are majoring in Honors Studies, Translational Science and students who are not degree seeking. These were combined to maintain student confidentiality.

\*\*Increase in student enrollment in University College beginning in Fall 2019 due to studies program implementation.

# Current College Structure Full Time Equivalent (Fall Semesters)

		Fa. 2018	Fa. 2019	Fa. 2020	Fa. 2021	Fa. 2022
Business	Undergraduate	4,816.0 88%	3,909.7 86%	3,547.5 80%	3,958.9 81%	4,955.5 85%
	Post-Bac	39.6 1%	38.0 1%	35.3 1%	40.8 1%	58.3 1%
	Masters	537.8 10%	549.0 12%	793.1 18%	837.6 17%	734.8 13%
	Doctoral	55.7 1%	67.8 1%	67.1 2%	66.6 1%	61.3 1%
	Total	5,449.0 100%	4,564.4 100%	4,442.9 100%	4,903.8 100%	5,809.9 100%
Education and Human Development	Undergraduate	932.0 56%	905.5 55%	930.3 57%	918.8 58%	849.5 58%
	Post-Bac	28.4 2%	21.0 1%	17.8 1%	16.5 1%	13.1 1%
	Masters	555.2 34%	558.7 34%	549.0 33%	483.3 31%	459.3 31%
	Doctoral	138.8 8%	150.6 9%	143.3 9%	160.3 10%	152.0 10%
	Total	1,654.3 100%	1,635.8 100%	1,640.4 100%	1,579.0 100%	1,473.8 100%
Engineering and Integrated Design	Undergraduate	2,948.4 87%	2,819.3 87%	2,982.3 86%	2,851.8 85%	2,771.5 86%
	Post-Bac	39.8 1%	38.0 1%	49.7 1%	37.1 1%	37.8 1%
	Masters	242.8 7%	212.2 7%	250.4 7%	272.9 8%	256.1 8%
	Doctoral	150.8 4%	176.3 5%	175.1 5%	181.9 5%	175.9 5%
	Total	3,381.8 100%	3,245.8 100%	3,457.5 100%	3,343.7 100%	3,241.3 100%
Health, Community and Policy	Undergraduate	5,129.6 92%	4,801.5 92%	5,113.3 92%	4,927.8 92%	4,699.6 93%
	Post-Bac	38.0 1%	30.1 1%	27.6 0%	21.9 0%	17.4 0%
	Masters	342.4 6%	356.4 7%	372.8 7%	341.5 6%	305.7 6%
	Doctoral	36.8 1%	44.7 1%	43.7 1%	43.4 1%	48.8 1%
	Total	5,546.8 100%	5,232.6 100%	5,557.3 100%	5,334.7 100%	5,071.5 100%
Liberal and Fine Arts	Undergraduate	3,437.5 95%	3,460.5 94%	3,535.5 94%	3,100.7 93%	2,779.7 92%
	Post-Bac	27.0 1%	27.7 1%	26.3 1%	15.4 0%	24.2 1%

		Fa. 2018	Fa. 2019	Fa. 2020	Fa. 2021	Fa. 2022
Liberal and Fine Arts	Masters	129.4 4%	155.4 4%	175.7 5%	190.2 6%	161.4 5%
	Doctoral	37.9 1%	40.2 1%	31.0 1%	40.3 1%	50.3 2%
	Total	3,631.8 100%	3,683.9 100%	3,768.4 100%	3,346.6 100%	3,015.7 100%
Other Area*	Undergraduate	32.0 29%	36.6 35%	27.7 25%	23.0 23%	25.5 31%
	Post-Bac	76.7 71%	67.3 65%	82.0 75%	75.2 77%	57.8 69%
	Total	108.7 100%	103.9 100%	109.7 100%	98.2 100%	83.3 100%
Sciences	Undergraduate	4,106.6 91%	3,041.9 88%	3,660.8 89%	3,998.7 90%	4,204.6 90%
	Post-Bac	62.1 1%	43.3 1%	44.4 1%	44.5 1%	55.8 1%
	Masters	178.3 4%	179.7 5%	191.7 5%	199.8 4%	200.2 4%
	Doctoral	187.6 4%	210.2 6%	212.2 5%	213.8 5%	210.0 4%
	Total	4,534.5 100%	3,475.1 100%	4,109.1 100%	4,456.8 100%	4,670.6 100%
University College**	Undergraduate	1,608.1 99%	4,098.2 99%	4,477.7 99%	3,773.3 99%	2,912.2 99%
	Post-Bac	10.4 1%	23.9 1%	46.8 1%	29.0 1%	18.9 1%
	Masters	0.0 0%	0.0 0%	0.0 0%	0.0 0%	7.3 0%
	Doctoral	4.4 0%	2.7 0%	3.7 0%	3.7 0%	4.4 0%
	Total	1,623.0 100%	4,124.8 100%	4,528.2 100%	3,805.9 100%	2,942.9 100%
Total		25,930.0 100%	26,066.3 100%	27,613.6 100%	26,868.7 100%	26,308.9 100%

## Current College Structure Enrollment by Level (Fall Semesters)

		Fa. 2018	Fa. 2019	Fa. 2020	Fa. 2021	Fa. 2022
<b>Business</b>	<b>Undergraduate</b>	5,739 85%	4,716 83%	4,320 76%	4,920 77%	6,163 81%
	<b>Post-Bac</b>	53 1%	54 1%	56 1%	60 1%	81 1%
	<b>Masters</b>	870 13%	856 15%	1,208 21%	1,342 21%	1,252 17%
	<b>Doctoral</b>	81 1%	83 1%	80 1%	85 1%	78 1%
	<b>Total</b>	6,743 100%	5,709 100%	5,664 100%	6,407 100%	7,574 100%
<b>Education and Human Development</b>	<b>Undergraduate</b>	1,154 48%	1,113 47%	1,157 49%	1,144 50%	1,055 48%
	<b>Post-Bac</b>	61 3%	47 2%	43 2%	46 2%	42 2%
	<b>Masters</b>	987 41%	969 41%	938 40%	855 37%	827 38%
	<b>Doctoral</b>	223 9%	235 10%	227 10%	266 12%	261 12%
	<b>Total</b>	2,425 100%	2,364 100%	2,365 100%	2,311 100%	2,185 100%
<b>Engineering and Integrated Design</b>	<b>Undergraduate</b>	3,532 85%	3,396 85%	3,603 84%	3,526 83%	3,448 83%
	<b>Post-Bac</b>	56 1%	53 1%	71 2%	54 1%	51 1%
	<b>Masters</b>	380 9%	327 8%	369 9%	431 10%	425 10%
	<b>Doctoral</b>	190 5%	227 6%	235 5%	230 5%	225 5%
	<b>Total</b>	4,158 100%	4,003 100%	4,278 100%	4,241 100%	4,149 100%
<b>Health, Community and Policy</b>	<b>Undergraduate</b>	6,132 90%	5,788 89%	6,105 90%	6,062 90%	5,843 91%
	<b>Post-Bac</b>	59 1%	38 1%	37 1%	34 1%	25 0%
	<b>Masters</b>	577 8%	587 9%	607 9%	559 8%	494 8%
	<b>Doctoral</b>	55 1%	64 1%	63 1%	65 1%	62 1%
	<b>Total</b>	6,823 100%	6,477 100%	6,812 100%	6,720 100%	6,424 100%
<b>Liberal and Fine Arts</b>	<b>Undergraduate</b>	4,106 92%	4,142 92%	4,245 91%	3,868 90%	3,593 90%
	<b>Post-Bac</b>	46 1%	39 1%	36 1%	27 1%	33 1%



		Fa. 2018	Fa. 2019	Fa. 2020	Fa. 2021	Fa. 2022
<b>Liberal and Fine Arts</b>	<b>Masters</b>	233 5%	265 6%	312 7%	336 8%	300 7%
	<b>Doctoral</b>	58 1%	67 1%	63 1%	68 2%	79 2%
	<b>Total</b>	4,443 100%	4,513 100%	4,656 100%	4,299 100%	4,005 100%
<b>Other Area*</b>	<b>Undergraduate</b>	104 46%	128 51%	112 43%	91 44%	95 48%
	<b>Post-Bac</b>	121 54%	123 49%	151 57%	117 56%	104 52%
	<b>Total</b>	225 100%	251 100%	263 100%	208 100%	199 100%
<b>Sciences</b>	<b>Undergraduate</b>	4,867 89%	3,646 86%	4,348 88%	4,893 88%	5,196 89%
	<b>Post-Bac</b>	82 2%	67 2%	62 1%	61 1%	70 1%
	<b>Masters</b>	293 5%	296 7%	326 7%	344 6%	336 6%
	<b>Doctoral</b>	204 4%	223 5%	224 5%	234 4%	225 4%
	<b>Total</b>	5,446 100%	4,232 100%	4,960 100%	5,532 100%	5,827 100%
<b>University College**</b>	<b>Undergraduate</b>	1,972 99%	5,003 99%	5,669 99%	4,962 99%	3,933 99%
	<b>Post-Bac</b>	18 1%	36 1%	68 1%	46 1%	32 1%
	<b>Masters</b>	0 0%	0 0%	0 0%	0 0%	10 0%
	<b>Doctoral</b>	11 1%	6 0%	7 0%	8 0%	6 0%
	<b>Total</b>	2,001 100%	5,045 100%	5,744 100%	5,016 100%	3,981 100%
<b>Total</b>		32,264 100%	32,594 100%	34,742 100%	34,734 100%	34,344 100%

\* Other Area includes students who are majoring in Honors Studies, Translational Science and students who are not degree seeking. These were combined to maintain student confidentiality.

\*\*Increase in student enrollment in University College in Fall 2019 due to studies program implementation.