

# Graduate Admissions

The UTSA Fact Book  
Office of Institutional Research and Analysis  
Fall 2023

## **First Time Masters Student Applications**

Applied, accepted, and enrolled data come from the Coordinating Board Admissions file (CBM00B) and contains summer and fall applications, while enrollment data is for the fall semester. Only students who have never applied at the Masters level are included here. Only the first-time, degree-seeking students are included in the cohorts for graduation and retention information. Contact the Office of Institutional Research and Analysis with questions: [Institutional.Research@utsa.edu](mailto:Institutional.Research@utsa.edu)

## First Time Masters Applied, Accepted, and Enrolled

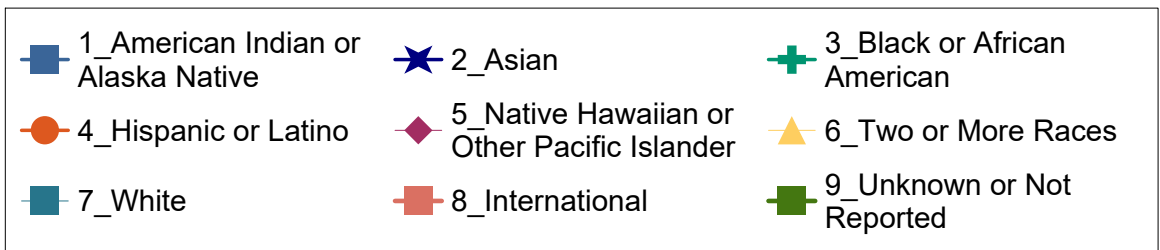
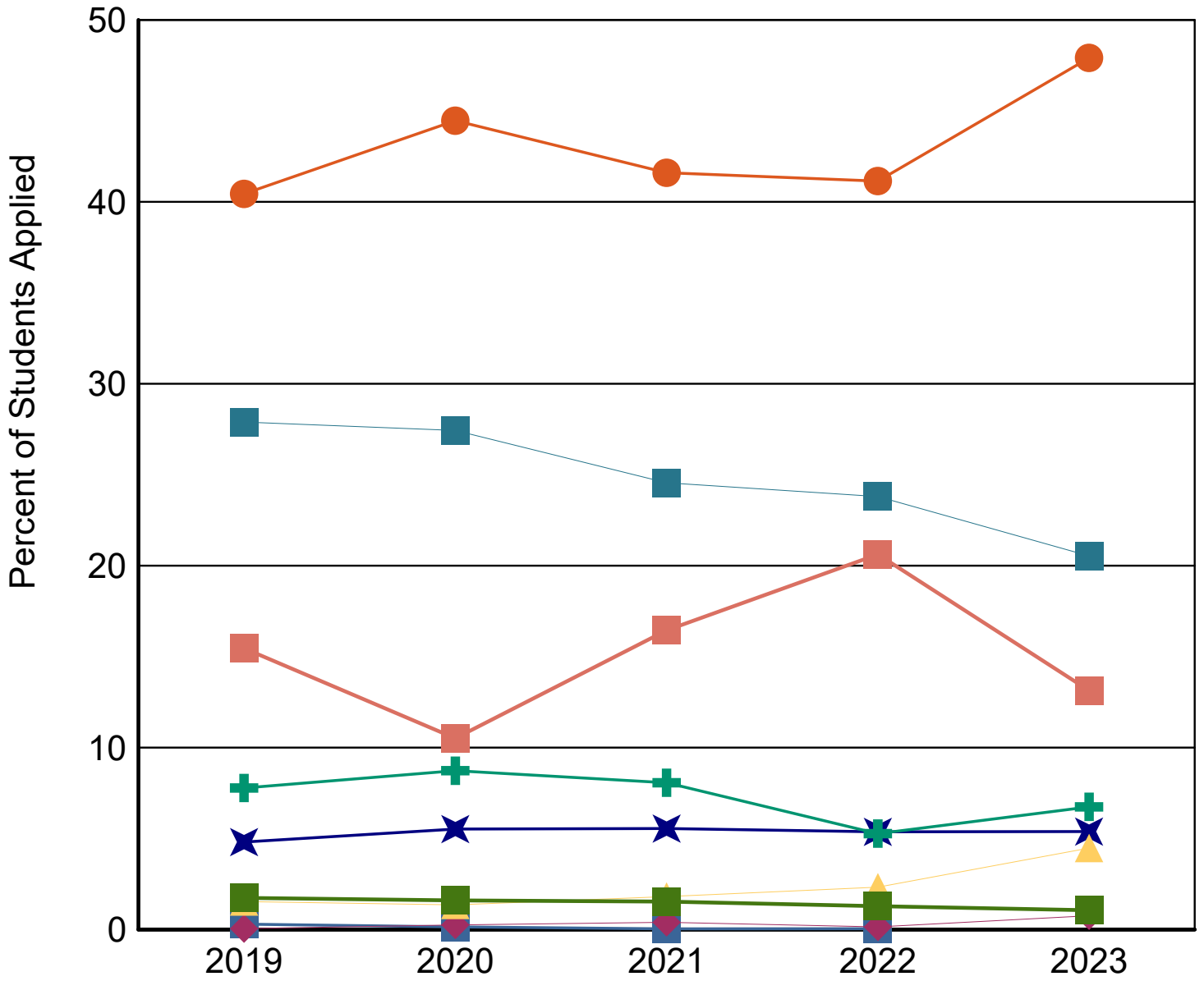
		2019	2020	2021	2022	2023
<b>First Time</b>	<b>Applied</b>	2,018	2,807	2,541	2,105	1,987
	<b>Accepted</b>	1,744	2,384	2,126	1,735	1,736
	<b>% Accepted</b>	86%	85%	84%	82%	87%
	<b>Enrolled</b>	1,131	1,573	1,274	1,079	1,123
	<b>% Enrolled</b>	65%	66%	60%	62%	65%

## First Time Masters Applied, Accepted, and Enrolled by Ethnicity

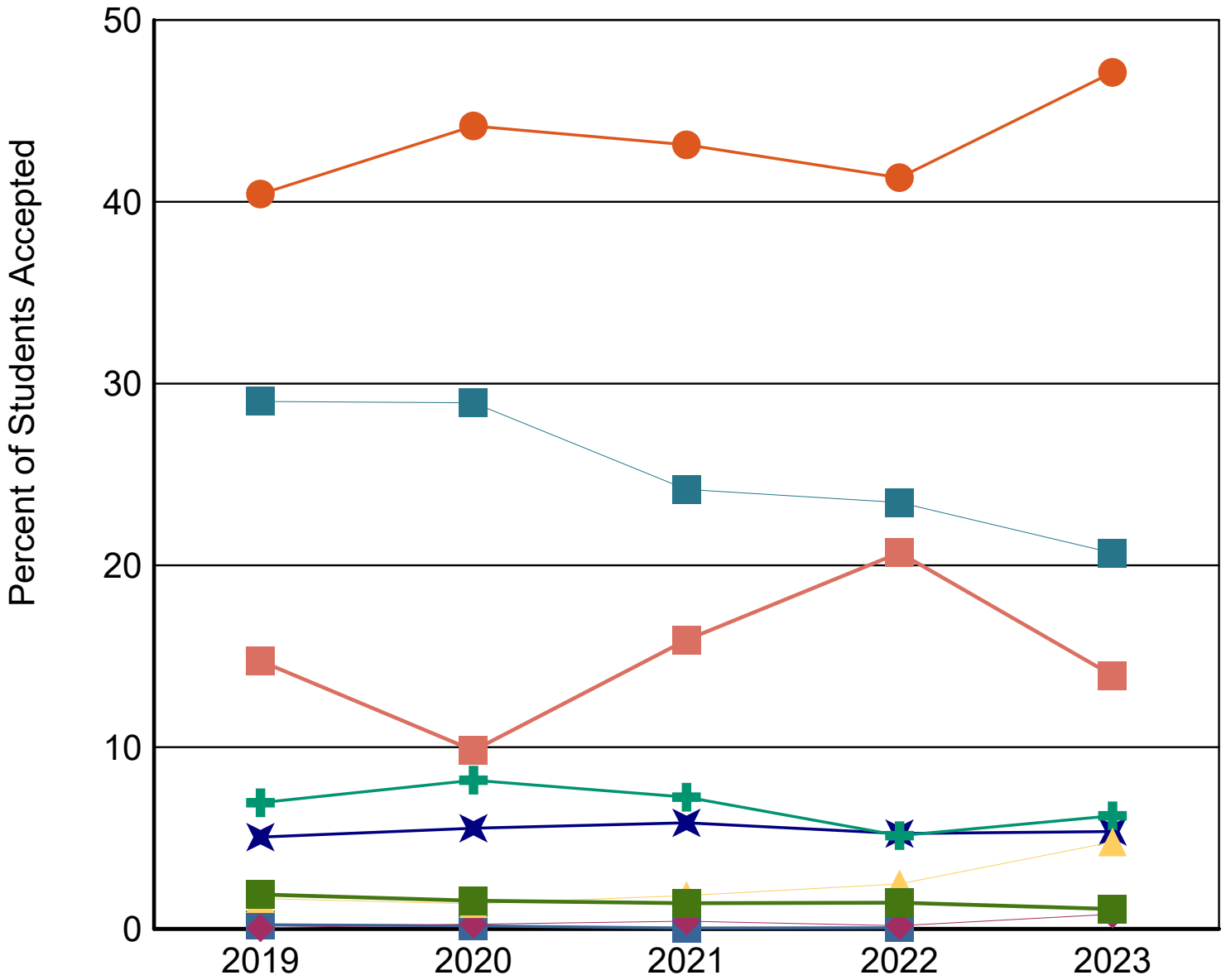
		2019	2020	2021	2022	2023
<b>American Indian or Alaska Native</b>	<b>Applied</b>	6	4	1	1	0
	<b>Accepted</b>	4	4	1	1	0
	<b>% Accepted</b>	67%	100%	100%	100%	0%
	<b>Enrolled</b>	3	2	1	1	0
	<b>% Enrolled</b>	75%	50%	100%	100%	
<b>Asian</b>	<b>Applied</b>	97	155	141	113	107
	<b>Accepted</b>	88	132	124	91	93
	<b>% Accepted</b>	91%	85%	88%	81%	87%
	<b>Enrolled</b>	55	87	65	55	59
	<b>% Enrolled</b>	63%	66%	52%	60%	63%
<b>Black or African American</b>	<b>Applied</b>	157	245	205	111	134
	<b>Accepted</b>	121	195	154	89	108
	<b>% Accepted</b>	77%	80%	75%	80%	81%
	<b>Enrolled</b>	87	123	92	61	76
	<b>% Enrolled</b>	72%	63%	60%	69%	70%
<b>Hispanic or Latino</b>	<b>Applied</b>	816	1,248	1,057	866	952
	<b>Accepted</b>	705	1,053	917	717	818
	<b>% Accepted</b>	86%	84%	87%	83%	86%
	<b>Enrolled</b>	541	779	666	543	616
	<b>% Enrolled</b>	77%	74%	73%	76%	75%
<b>Native Hawaiian or Other Pacific Islander</b>	<b>Applied</b>	1	7	10	3	15
	<b>Accepted</b>	1	6	9	3	14
	<b>% Accepted</b>	100%	86%	90%	100%	93%
	<b>Enrolled</b>	1	4	4	2	8
	<b>% Enrolled</b>	100%	67%	44%	67%	57%
<b>Two or More Races</b>	<b>Applied</b>	31	38	46	49	89
	<b>Accepted</b>	29	33	39	43	83
	<b>% Accepted</b>	94%	87%	85%	88%	93%
	<b>Enrolled</b>	20	24	24	28	58
	<b>% Enrolled</b>	69%	73%	62%	65%	70%
<b>White</b>	<b>Applied</b>	563	770	624	501	408
	<b>Accepted</b>	506	690	514	407	359
	<b>% Accepted</b>	90%	90%	82%	81%	88%
	<b>Enrolled</b>	330	452	300	270	209
	<b>% Enrolled</b>	65%	66%	58%	66%	58%
<b>International</b>	<b>Applied</b>	312	295	418	434	261
	<b>Accepted</b>	257	234	338	359	242
	<b>% Accepted</b>	82%	79%	81%	83%	93%
	<b>Enrolled</b>	71	75	101	108	88
	<b>% Enrolled</b>	28%	32%	30%	30%	36%

		2019	2020	2021	2022	2023
<b>Unknown or Not Reported</b>	<b>Applied</b>	35	45	39	27	21
	<b>Accepted</b>	33	37	30	25	19
	<b>% Accepted</b>	94%	82%	77%	93%	90%
	<b>Enrolled</b>	23	27	21	11	9
	<b>% Enrolled</b>	70%	73%	70%	44%	47%
<b>Total</b>	<b>Applied</b>	2,018	2,807	2,541	2,105	1,987
	<b>Accepted</b>	1,744	2,384	2,126	1,735	1,736
	<b>% Accepted</b>	86%	85%	84%	82%	87%
	<b>Enrolled</b>	1,131	1,573	1,274	1,079	1,123
	<b>% Enrolled</b>	65%	66%	60%	62%	65%

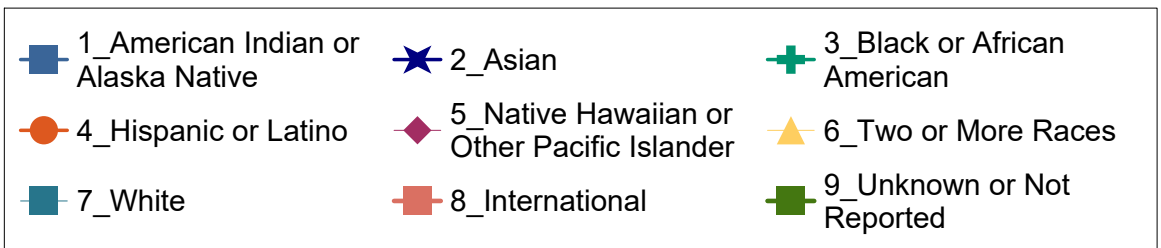
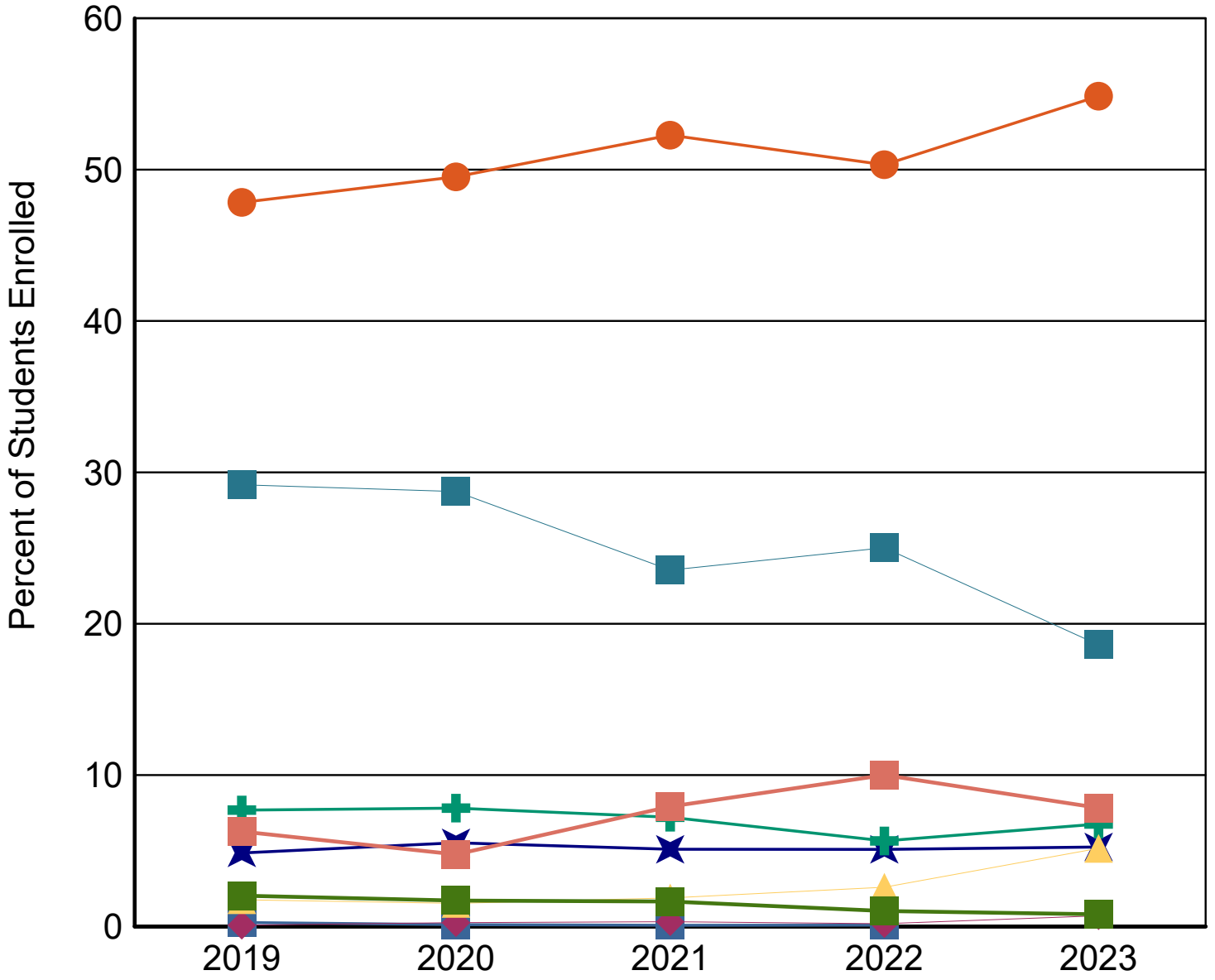
## First Time Masters Applied by Ethnicity



## First Time Masters Accepted by Ethnicity



## First Time Masters Enrolled by Ethnicity



## First Time Masters Applied, Accepted, and Enrolled by Gender

		2019	2020	2021	2022	2023
<b>Female</b>	<b>Applied</b>	1,108	1,556	1,452	1,171	1,110
	<b>Accepted</b>	982	1,324	1,224	958	945
	<b>% Accepted</b>	89%	85%	84%	82%	85%
	<b>Enrolled</b>	644	879	745	611	623
	<b>% Enrolled</b>	66%	66%	61%	64%	66%
<b>Male</b>	<b>Applied</b>	910	1,251	1,089	934	877
	<b>Accepted</b>	762	1,060	902	777	791
	<b>% Accepted</b>	84%	85%	83%	83%	90%
	<b>Enrolled</b>	487	694	529	468	500
	<b>% Enrolled</b>	64%	65%	59%	60%	63%
<b>Total</b>	<b>Applied</b>	2,018	2,807	2,541	2,105	1,987
	<b>Accepted</b>	1,744	2,384	2,126	1,735	1,736
	<b>% Accepted</b>	86%	85%	84%	82%	87%
	<b>Enrolled</b>	1,131	1,573	1,274	1,079	1,123
	<b>% Enrolled</b>	65%	66%	60%	62%	65%



## First Time Masters Applied, Accepted, and Enrolled by Economic Region

		2019	2020	2021	2022	2023
<b>Alamo</b>	<b>Applied</b>	1,159	1,746	1,430	1,233	1,172
	<b>Accepted</b>	1,027	1,506	1,251	1,040	1,047
	<b>% Accepted</b>	89%	86%	87%	84%	89%
	<b>Enrolled</b>	822	1,158	914	809	794
	<b>% Enrolled</b>	80%	77%	73%	78%	76%
<b>Capital</b>	<b>Applied</b>	75	131	138	111	109
	<b>Accepted</b>	64	110	107	81	91
	<b>% Accepted</b>	85%	84%	78%	73%	83%
	<b>Enrolled</b>	35	64	70	36	51
	<b>% Enrolled</b>	55%	58%	65%	44%	56%
<b>Central Texas</b>	<b>Applied</b>	27	26	20	18	33
	<b>Accepted</b>	23	23	16	13	30
	<b>% Accepted</b>	85%	88%	80%	72%	91%
	<b>Enrolled</b>	14	13	7	5	10
	<b>% Enrolled</b>	61%	57%	44%	38%	33%
<b>Gulf Coast</b>	<b>Applied</b>	105	172	120	79	104
	<b>Accepted</b>	93	140	90	67	86
	<b>% Accepted</b>	89%	81%	75%	85%	83%
	<b>Enrolled</b>	43	75	43	38	49
	<b>% Enrolled</b>	46%	54%	48%	57%	57%
<b>High Plains</b>	<b>Applied</b>	6	7	14	9	12
	<b>Accepted</b>	3	4	11	5	9
	<b>% Accepted</b>	50%	57%	79%	56%	75%
	<b>Enrolled</b>	3	3	5	2	5
	<b>% Enrolled</b>	100%	75%	45%	40%	56%
<b>Metroplex</b>	<b>Applied</b>	47	79	80	45	59
	<b>Accepted</b>	39	65	53	37	46
	<b>% Accepted</b>	83%	82%	66%	82%	78%
	<b>Enrolled</b>	21	29	24	11	21
	<b>% Enrolled</b>	54%	45%	45%	30%	46%
<b>Northwest</b>	<b>Applied</b>	4	8	3	5	7
	<b>Accepted</b>	4	6	3	3	5
	<b>% Accepted</b>	100%	75%	100%	60%	71%
	<b>Enrolled</b>	4	1	2	0	3
	<b>% Enrolled</b>	100%	17%	67%	0%	60%
<b>South Texas</b>	<b>Applied</b>	134	181	123	80	112
	<b>Accepted</b>	112	153	108	67	86
	<b>% Accepted</b>	84%	85%	88%	84%	77%
	<b>Enrolled</b>	70	113	69	44	61
	<b>% Enrolled</b>	63%	74%	64%	66%	71%
<b>Southeast</b>	<b>Applied</b>	10	10	5	4	5
	<b>Accepted</b>	8	8	3	2	4
	<b>% Accepted</b>	80%	80%	60%	50%	80%
	<b>Enrolled</b>	2	4	1	2	2
	<b>% Enrolled</b>	25%	50%	33%	100%	50%
<b>Upper East</b>	<b>Applied</b>	8	11	9	4	6
	<b>Accepted</b>	6	10	7	2	6
	<b>% Accepted</b>	75%	91%	78%	50%	100%
	<b>Enrolled</b>	5	5	3	1	3
	<b>% Enrolled</b>	83%	50%	43%	50%	50%

		2019	2020	2021	2022	2023
<b>Upper Rio Grande</b>	<b>Applied</b>	13	21	14	24	16
	<b>Accepted</b>	10	21	11	19	13
	<b>% Accepted</b>	77%	100%	79%	79%	81%
	<b>Enrolled</b>	7	14	6	11	9
	<b>% Enrolled</b>	70%	67%	55%	58%	69%
<b>West Texas</b>	<b>Applied</b>	14	10	9	7	9
	<b>Accepted</b>	12	9	7	5	5
	<b>% Accepted</b>	86%	90%	78%	71%	56%
	<b>Enrolled</b>	8	5	4	5	4
	<b>% Enrolled</b>	67%	56%	57%	100%	80%
<b>Not in Texas</b>	<b>Applied</b>	416	405	576	486	343
	<b>Accepted</b>	343	329	459	394	308
	<b>% Accepted</b>	82%	81%	80%	81%	90%
	<b>Enrolled</b>	97	89	126	115	111
	<b>% Enrolled</b>	28%	27%	27%	29%	36%
<b>Total</b>	<b>Applied</b>	2,018	2,807	2,541	2,105	1,987
	<b>Accepted</b>	1,744	2,384	2,126	1,735	1,736
	<b>% Accepted</b>	86%	85%	84%	82%	87%
	<b>Enrolled</b>	1,131	1,573	1,274	1,079	1,123
	<b>% Enrolled</b>	65%	66%	60%	62%	65%

The map of the regions below comes from the Texas Comptroller's website at <http://www.window.state.tx.us>. A full listing of counties is on following page.



## Texas Economic Regions

**Alamo:** Atascosa, Bandera, Bexar, Calhoun, Comal, DeWitt, Frio, Gillespie, Goliad, Gonzales, Guadalupe, Jackson, Karnes, Kendall, Kerr, Lavaca, Medina, Victoria, Wilson

**Capital:** Bastrop, Blanco, Burnet, Caldwell, Fayette, Hays, Lee, Llano, Travis, Williamson

**Central Texas:** Bell, Bosque, Brazos, Burleson, Coryell, Falls, Freestone, Grimes, Hamilton, Hill, Lampasas, Leon, Limestone, Madison, McLennan, Milam, Mills, Robertson, San Saba, Washington

**Gulf Coast:** Austin, Brazoria, Chambers, Colorado, Fort Bend, Galveston, Harris, Liberty, Matagorda, Montgomery, Walker, Waller, Wharton

**High Plains:** Armstrong, Bailey, Briscoe, Carson, Castro, Childress, Cochran, Collingsworth, Crosby, Dallam, Deaf Smith, Dickens, Donley, Floyd, Garza, Gray, Hale, Hall, Hansford, Hartley, Hemphill, Hockley, Hutchinson, King, Lamb, Lipscomb, Lubbock, Lynn, Moore, Motley, Ochiltree, Oldham, Parmer, Potter, Randall, Roberts, Sherman, Swisher, Terry, Wheeler, Yoakum

**Metroplex:** Collin, Cooke, Dallas, Denton, Ellis, Erath, Fannin, Grayson, Hood, Hunt, Johnson, Kaufman, Navarro, Palo Pinto, Parker, Rockwall, Somervell, Tarrant, Wise

**Northwest:** Archer, Baylor, Brown, Callahan, Clay, Coleman, Comanche, Cottle, Eastland, Fisher, Foard, Hardeman, Haskell, Jack, Jones, Kent, Knox, Mitchell, Montague, Nolan, Runnels, Scurry, Shackelford, Stephens, Stonewall, Taylor, Throckmorton, Wichita, Wilbarger, Young

**South Texas:** Aransas, Bee, Brooks, Cameron, Dimmit, Duval, Edwards, Hidalgo, Jim Hogg, Jim Wells, Kenedy, Kinney, Kleberg, La Salle, Live Oak, Maverick, McMullen, Nueces, Real, Refugio, San Patricio, Starr, Uvalde, Val Verde, Webb, Willacy, Zapata, Zavala

**Southeast:** Angelina, Hardin, Houston, Jasper, Jefferson, Nacogdoches, Newton, Orange, Polk, Sabine, San Augustine, San Jacinto, Shelby, Trinity, Tyler

**Upper East:** Anderson, Bowie, Camp, Cass, Cherokee, Delta, Franklin, Gregg, Harrison, Henderson, Hopkins, Lamar, Marion, Morris, Panola, Rains, Red River, Rusk, Smith, Titus, Upshur, Van Zandt, Wood

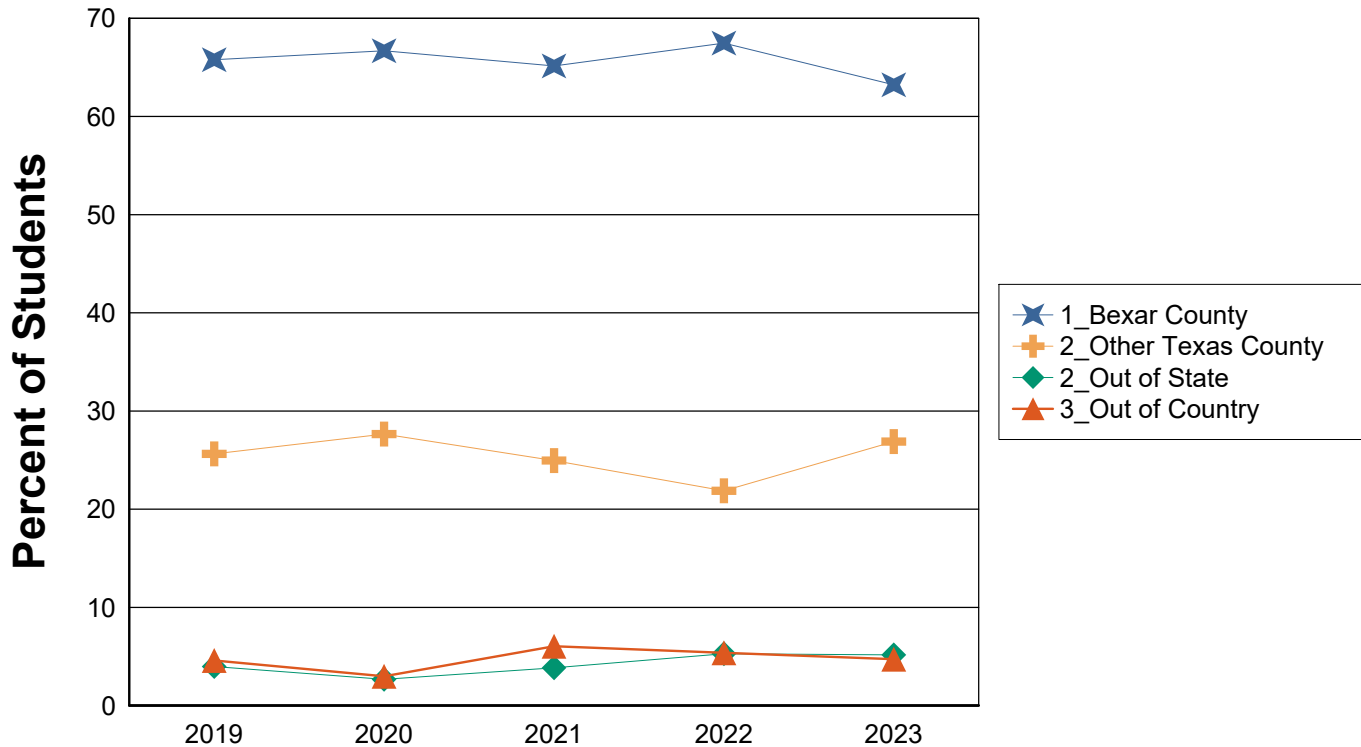
**Upper Rio Grande:** Brewster, Culberson, El Paso, Hudspeth, Jeff Davis, Presidio

**West Texas:** Andrews, Borden, Coke, Concho, Crane, Crockett, Dawson, Ector, Gaines, Glasscock, Howard, Irion, Kimble, Loving, Martin, Mason, McCulloch, Menard, Midland, Pecos, Reagan, Reeves, Schleicher, Sterling, Sutton, Terrell, Tom Green, Upton, Ward, Winkler

### First Time Masters Applied, Accepted, and Enrolled by Residence Category

		2019	2020	2021	2022	2023
<b>Bexar County</b>	<b>Applied</b>	1,048	1,560	1,288	1,098	1,043
	<b>Accepted</b>	928	1,355	1,128	928	935
	<b>% Accepted</b>	89%	87%	88%	85%	90%
	<b>Enrolled</b>	744	1,049	830	728	710
	<b>% Enrolled</b>	80%	77%	74%	78%	76%
<b>Other Texas County</b>	<b>Applied</b>	554	842	677	521	601
	<b>Accepted</b>	473	700	539	413	493
	<b>% Accepted</b>	85%	83%	80%	79%	82%
	<b>Enrolled</b>	290	435	318	236	302
	<b>% Enrolled</b>	61%	62%	59%	57%	61%
<b>Out of State</b>	<b>Applied</b>	153	156	199	197	166
	<b>Accepted</b>	129	134	158	153	147
	<b>% Accepted</b>	84%	86%	79%	78%	89%
	<b>Enrolled</b>	45	42	49	57	58
	<b>% Enrolled</b>	35%	31%	31%	37%	39%
<b>Out of Country</b>	<b>Applied</b>	263	249	377	289	177
	<b>Accepted</b>	214	195	301	241	161
	<b>% Accepted</b>	81%	78%	80%	83%	91%
	<b>Enrolled</b>	52	47	77	58	53
	<b>% Enrolled</b>	24%	24%	26%	24%	33%
<b>Total</b>	<b>Applied</b>	2,018	2,807	2,541	2,105	1,987
	<b>Accepted</b>	1,744	2,384	2,126	1,735	1,736
	<b>% Applied</b>	86%	85%	84%	82%	87%
	<b>Enrolled</b>	1,131	1,573	1,274	1,079	1,123
	<b>% Enrolled</b>	65%	66%	60%	62%	65%

### First Time Masters Applied, Accepted, and Enrolled by Residence Category



## **First Time Doctoral Student Applications**

Applied, accepted, and enrolled data come from the Coordinating Board Admissions file (CBM00B) and contains summer and fall applications, while enrollment data is for the fall semester. Only students who have never applied at the Doctoral level are included here. Only the first-time, degree-seeking students are included in the cohorts for graduation and retention information. Contact the Office of Institutional Research and Analysis with questions: [Institutional.Research@utsa.edu](mailto:Institutional.Research@utsa.edu)

## First Time Doctoral Applied, Accepted, and Enrolled

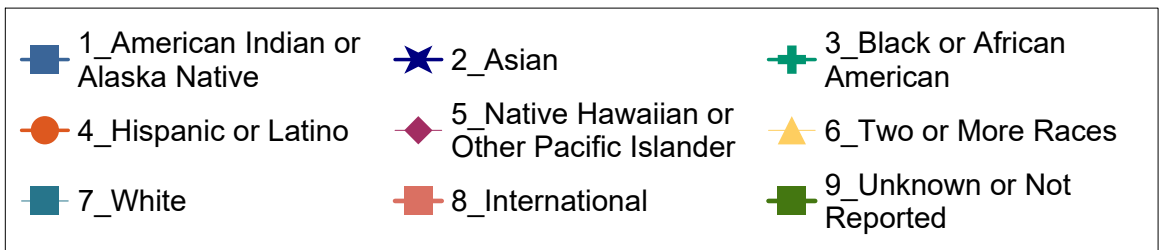
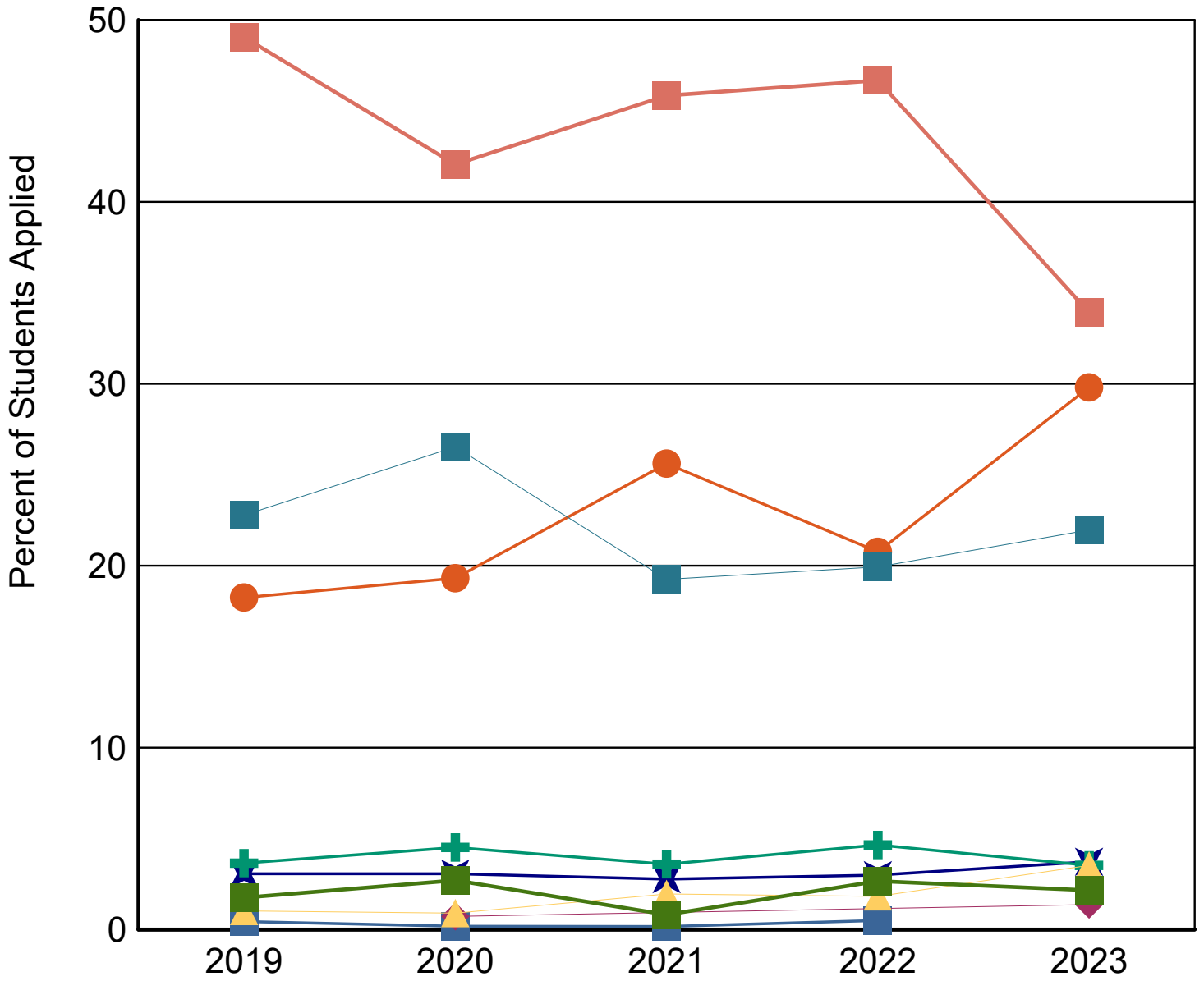
		2019	2020	2021	2022	2023
<b>First Time</b>	<b>Applied</b>	685	554	613	602	510
	<b>Accepted</b>	336	304	290	308	304
	<b>% Accepted</b>	49%	55%	47%	51%	60%
	<b>Enrolled</b>	209	170	188	175	183
	<b>% Enrolled</b>	62%	56%	65%	57%	60%

## First Time Doctoral Applied, Accepted, and Enrolled by Ethnicity

		2019	2020	2021	2022	2023
<b>American Indian or Alaska Native</b>	<b>Applied</b>	3	1	1	3	0
	<b>Accepted</b>	1	1	0	2	0
	<b>% Accepted</b>	33%	100%	0%	67%	0%
	<b>Enrolled</b>	0	1	0	2	0
	<b>% Enrolled</b>	0%	100%		100%	
<b>Asian</b>	<b>Applied</b>	21	17	17	18	19
	<b>Accepted</b>	11	5	9	9	8
	<b>% Accepted</b>	52%	29%	53%	50%	42%
	<b>Enrolled</b>	5	3	7	8	4
	<b>% Enrolled</b>	45%	60%	78%	89%	50%
<b>Black or African American</b>	<b>Applied</b>	25	25	22	28	18
	<b>Accepted</b>	13	11	9	14	5
	<b>% Accepted</b>	52%	44%	41%	50%	28%
	<b>Enrolled</b>	9	7	6	9	3
	<b>% Enrolled</b>	69%	64%	67%	64%	60%
<b>Hispanic or Latino</b>	<b>Applied</b>	125	107	157	125	152
	<b>Accepted</b>	78	77	96	72	78
	<b>% Accepted</b>	62%	72%	61%	58%	51%
	<b>Enrolled</b>	58	54	79	51	57
	<b>% Enrolled</b>	74%	70%	82%	71%	73%
<b>Native Hawaiian or Other Pacific Islander</b>	<b>Applied</b>	0	4	0	0	7
	<b>Accepted</b>	0	1	0	0	4
	<b>% Accepted</b>	0%	25%	0%	0%	57%
	<b>Enrolled</b>	0	1	0	0	3
	<b>% Enrolled</b>		100%			75%
<b>Two or More Races</b>	<b>Applied</b>	7	5	12	11	18
	<b>Accepted</b>	5	3	6	8	10
	<b>% Accepted</b>	71%	60%	50%	73%	56%
	<b>Enrolled</b>	1	1	5	6	7
	<b>% Enrolled</b>	20%	33%	83%	75%	70%
<b>White</b>	<b>Applied</b>	156	147	118	120	112
	<b>Accepted</b>	94	93	63	71	67
	<b>% Accepted</b>	60%	63%	53%	59%	60%
	<b>Enrolled</b>	65	58	40	49	40
	<b>% Enrolled</b>	69%	62%	63%	69%	60%
<b>International</b>	<b>Applied</b>	336	233	281	281	173
	<b>Accepted</b>	126	106	105	119	125
	<b>% Accepted</b>	38%	45%	37%	42%	72%
	<b>Enrolled</b>	66	43	49	47	64
	<b>% Enrolled</b>	52%	41%	47%	39%	51%

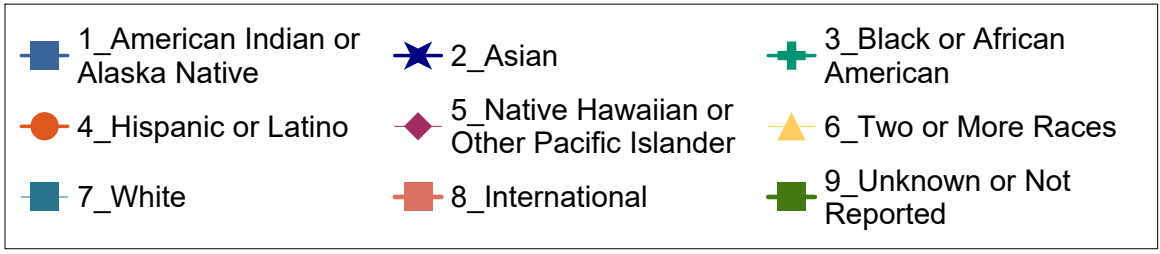
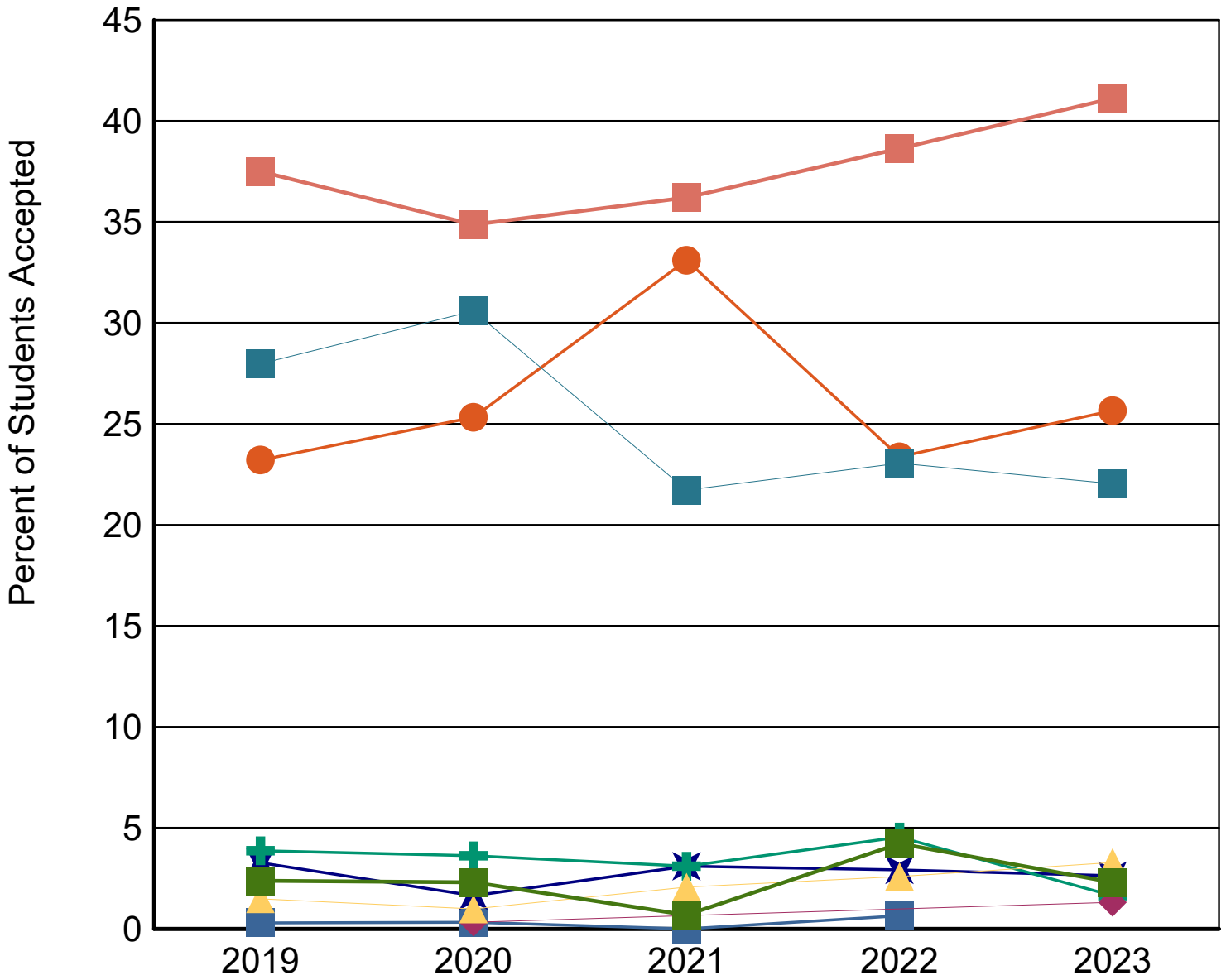
		2019	2020	2021	2022	2023
<b>Unknown or Not Reported</b>	<b>Applied</b>	12	15	5	16	11
	<b>Accepted</b>	8	7	2	13	7
	<b>% Accepted</b>	67%	47%	40%	81%	64%
	<b>Enrolled</b>	5	2	2	3	5
	<b>% Enrolled</b>	63%	29%	100%	23%	71%
<b>Total</b>	<b>Applied</b>	685	554	613	602	510
	<b>Accepted</b>	336	304	290	308	304
	<b>% Accepted</b>	49%	55%	47%	51%	60%
	<b>Enrolled</b>	209	170	188	175	183
	<b>% Enrolled</b>	62%	56%	65%	57%	60%

## First Time Doctoral Applied by Ethnicity

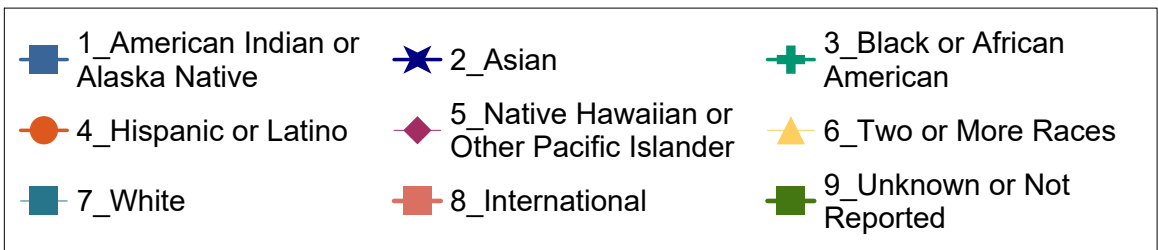
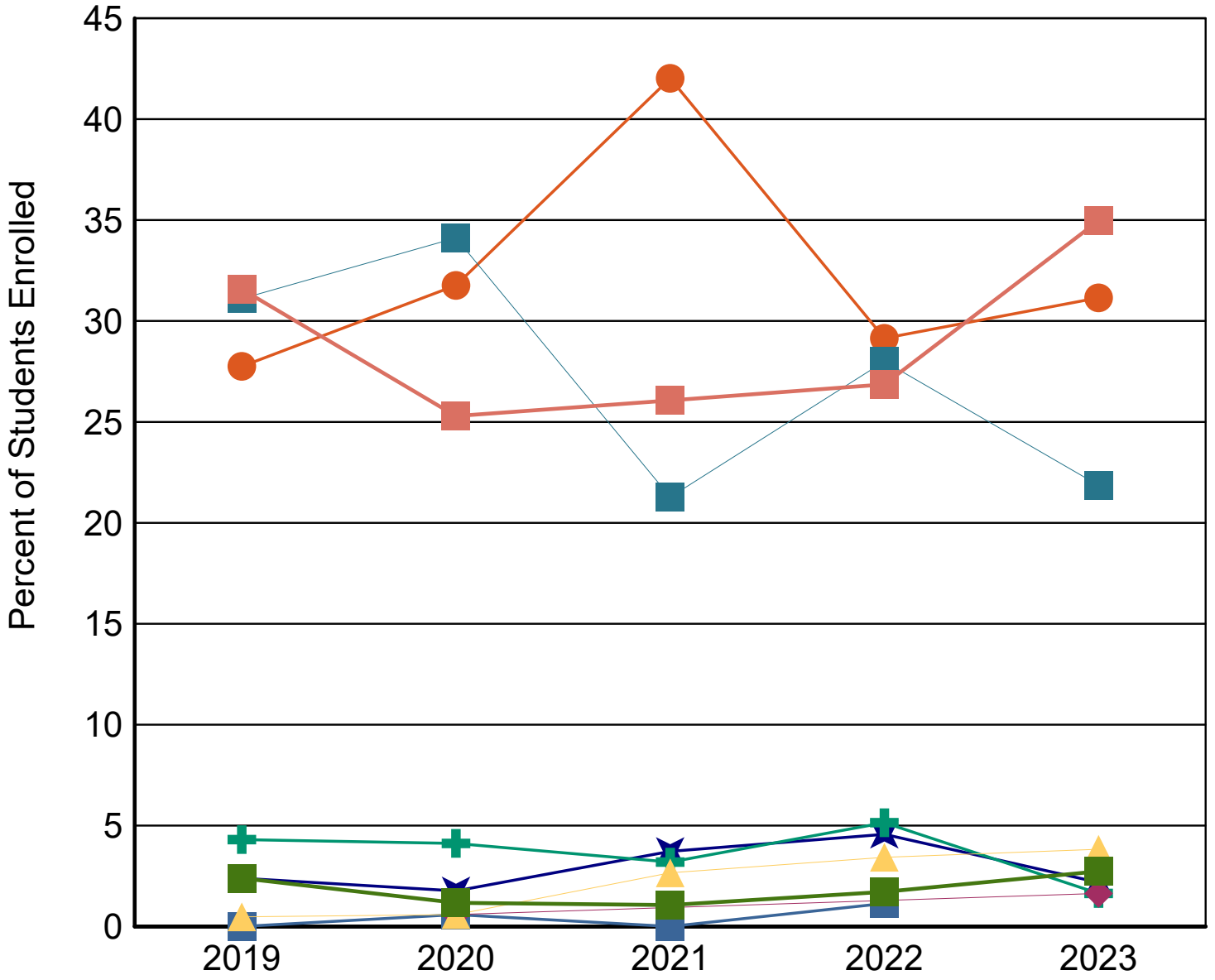




## First Time Doctoral Accepted by Ethnicity



## First Time Doctoral Enrolled by Ethnicity



## First Time Doctoral Applied, Accepted, and Enrolled by Gender

		2019	2020	2021	2022	2023
<b>Female</b>	<b>Applied</b>	311	251	293	305	259
	<b>Accepted</b>	153	133	155	163	151
	<b>% Accepted</b>	49%	53%	53%	53%	58%
	<b>Enrolled</b>	103	74	112	95	90
	<b>% Enrolled</b>	67%	56%	72%	58%	60%
<b>Male</b>	<b>Applied</b>	374	303	320	297	251
	<b>Accepted</b>	183	171	135	145	153
	<b>% Accepted</b>	49%	56%	42%	49%	61%
	<b>Enrolled</b>	106	96	76	80	93
	<b>% Enrolled</b>	58%	56%	56%	55%	61%
<b>Total</b>	<b>Applied</b>	685	554	613	602	510
	<b>Accepted</b>	336	304	290	308	304
	<b>% Accepted</b>	49%	55%	47%	51%	60%
	<b>Enrolled</b>	209	170	188	175	183
	<b>% Enrolled</b>	62%	56%	65%	57%	60%

## First Time Doctoral Applied, Accepted, and Enrolled by Economic Region

		2019	2020	2021	2022	2023
<b>Alamo</b>	<b>Applied</b>	216	176	209	184	209
	<b>Accepted</b>	134	121	131	123	135
	<b>% Accepted</b>	62%	69%	63%	67%	65%
	<b>Enrolled</b>	103	95	107	96	105
	<b>% Enrolled</b>	77%	79%	82%	78%	78%
<b>Capital</b>	<b>Applied</b>	25	21	21	25	16
	<b>Accepted</b>	15	14	9	14	5
	<b>% Accepted</b>	60%	67%	43%	56%	31%
	<b>Enrolled</b>	6	5	4	8	2
	<b>% Enrolled</b>	40%	36%	44%	57%	40%
<b>Central Texas</b>	<b>Applied</b>	2	4	6	9	8
	<b>Accepted</b>	1	0	3	4	4
	<b>% Accepted</b>	50%	0%	50%	44%	50%
	<b>Enrolled</b>	1	0	0	2	3
	<b>% Enrolled</b>	100%		0%	50%	75%
<b>Gulf Coast</b>	<b>Applied</b>	23	13	24	23	10
	<b>Accepted</b>	7	6	10	7	4
	<b>% Accepted</b>	30%	46%	42%	30%	40%
	<b>Enrolled</b>	4	4	4	4	2
	<b>% Enrolled</b>	57%	67%	40%	57%	50%
<b>High Plains</b>	<b>Applied</b>	2	3	2	3	2
	<b>Accepted</b>	0	2	0	2	2
	<b>% Accepted</b>	0%	67%	0%	67%	100%
	<b>Enrolled</b>	0	0	0	1	1
	<b>% Enrolled</b>		0%		50%	50%
<b>Metroplex</b>	<b>Applied</b>	13	9	12	22	17
	<b>Accepted</b>	8	4	2	9	7
	<b>% Accepted</b>	62%	44%	17%	41%	41%
	<b>Enrolled</b>	2	0	1	6	5
	<b>% Enrolled</b>	25%	0%	50%	67%	71%
<b>Northwest</b>	<b>Applied</b>	1	0	0	1	1
	<b>Accepted</b>	1	0	0	0	0
	<b>% Accepted</b>	100%	0%	0%	0%	0%
	<b>Enrolled</b>	0	0	0	0	0
	<b>% Enrolled</b>	0%				
<b>South Texas</b>	<b>Applied</b>	24	22	37	19	21
	<b>Accepted</b>	11	13	29	7	8
	<b>% Accepted</b>	46%	59%	78%	37%	38%
	<b>Enrolled</b>	7	7	25	5	4
	<b>% Enrolled</b>	64%	54%	86%	71%	50%
<b>Southeast</b>	<b>Applied</b>	1	2	0	2	2
	<b>Accepted</b>	1	0	0	1	2
	<b>% Accepted</b>	100%	0%	0%	50%	100%
	<b>Enrolled</b>	0	0	0	0	1
	<b>% Enrolled</b>	0%			0%	50%
<b>Upper East</b>	<b>Applied</b>	3	1	2	0	0
	<b>Accepted</b>	1	1	2	0	0
	<b>% Accepted</b>	33%	100%	100%	0%	0%
	<b>Enrolled</b>	0	1	1	0	0
	<b>% Enrolled</b>	0%	100%	50%		

		2019	2020	2021	2022	2023
<b>Upper Rio Grande</b>	<b>Applied</b>	4	2	2	3	6
	<b>Accepted</b>	3	1	1	1	0
	<b>% Accepted</b>	75%	50%	50%	33%	0%
	<b>Enrolled</b>	1	0	1	1	0
	<b>% Enrolled</b>	33%	0%	100%	100%	
<b>West Texas</b>	<b>Applied</b>	0	2	0	1	2
	<b>Accepted</b>	0	1	0	1	2
	<b>% Accepted</b>	0%	50%	0%	100%	100%
	<b>Enrolled</b>	0	1	0	1	1
	<b>% Enrolled</b>		100%		100%	50%
<b>Not in Texas</b>	<b>Applied</b>	371	299	298	310	216
	<b>Accepted</b>	154	141	103	139	135
	<b>% Accepted</b>	42%	47%	35%	45%	63%
	<b>Enrolled</b>	85	57	45	51	59
	<b>% Enrolled</b>	55%	40%	44%	37%	44%
<b>Total</b>	<b>Applied</b>	685	554	613	602	510
	<b>Accepted</b>	336	304	290	308	304
	<b>% Accepted</b>	49%	55%	47%	51%	60%
	<b>Enrolled</b>	209	170	188	175	183
	<b>% Enrolled</b>	62%	56%	65%	57%	60%

The map of the regions below comes from the Texas Comptroller's website at <http://www.window.state.tx.us>. A full listing of counties is on following page.



## Texas Economic Regions

**Alamo:** Atascosa, Bandera, Bexar, Calhoun, Comal, DeWitt, Frio, Gillespie, Goliad, Gonzales, Guadalupe, Jackson, Karnes, Kendall, Kerr, Lavaca, Medina, Victoria, Wilson

**Capital:** Bastrop, Blanco, Burnet, Caldwell, Fayette, Hays, Lee, Llano, Travis, Williamson

**Central Texas:** Bell, Bosque, Brazos, Burleson, Coryell, Falls, Freestone, Grimes, Hamilton, Hill, Lampasas, Leon, Limestone, Madison, McLennan, Milam, Mills, Robertson, San Saba, Washington

**Gulf Coast:** Austin, Brazoria, Chambers, Colorado, Fort Bend, Galveston, Harris, Liberty, Matagorda, Montgomery, Walker, Waller, Wharton

**High Plains:** Armstrong, Bailey, Briscoe, Carson, Castro, Childress, Cochran, Collingsworth, Crosby, Dallam, Deaf Smith, Dickens, Donley, Floyd, Garza, Gray, Hale, Hall, Hansford, Hartley, Hemphill, Hockley, Hutchinson, King, Lamb, Lipscomb, Lubbock, Lynn, Moore, Motley, Ochiltree, Oldham, Parmer, Potter, Randall, Roberts, Sherman, Swisher, Terry, Wheeler, Yoakum

**Metroplex:** Collin, Cooke, Dallas, Denton, Ellis, Erath, Fannin, Grayson, Hood, Hunt, Johnson, Kaufman, Navarro, Palo Pinto, Parker, Rockwall, Somervell, Tarrant, Wise

**Northwest:** Archer, Baylor, Brown, Callahan, Clay, Coleman, Comanche, Cottle, Eastland, Fisher, Foard, Hardeman, Haskell, Jack, Jones, Kent, Knox, Mitchell, Montague, Nolan, Runnels, Scurry, Shackelford, Stephens, Stonewall, Taylor, Throckmorton, Wichita, Wilbarger, Young

**South Texas:** Aransas, Bee, Brooks, Cameron, Dimmit, Duval, Edwards, Hidalgo, Jim Hogg, Jim Wells, Kenedy, Kinney, Kleberg, La Salle, Live Oak, Maverick, McMullen, Nueces, Real, Refugio, San Patricio, Starr, Uvalde, Val Verde, Webb, Willacy, Zapata, Zavala

**Southeast:** Angelina, Hardin, Houston, Jasper, Jefferson, Nacogdoches, Newton, Orange, Polk, Sabine, San Augustine, San Jacinto, Shelby, Trinity, Tyler

**Upper East:** Anderson, Bowie, Camp, Cass, Cherokee, Delta, Franklin, Gregg, Harrison, Henderson, Hopkins, Lamar, Marion, Morris, Panola, Rains, Red River, Rusk, Smith, Titus, Upshur, Van Zandt, Wood

**Upper Rio Grande:** Brewster, Culberson, El Paso, Hudspeth, Jeff Davis, Presidio

**West Texas:** Andrews, Borden, Coke, Concho, Crane, Crockett, Dawson, Ector, Gaines, Glasscock, Howard, Irion, Kimble, Loving, Martin, Mason, McCulloch, Menard, Midland, Pecos, Reagan, Reeves, Schleicher, Sterling, Sutton, Terrell, Tom Green, Upton, Ward, Winkler

## First Time Doctoral Applied, Accepted, and Enrolled by Residence Category

		2019	2020	2021	2022	2023
<b>Bexar County</b>	<b>Applied</b>	208	162	193	169	183
	<b>Accepted</b>	130	109	119	116	120
	<b>% Accepted</b>	63%	67%	62%	69%	66%
	<b>Enrolled</b>	100	87	95	93	91
	<b>% Enrolled</b>	77%	80%	80%	80%	76%
<b>Other Texas County</b>	<b>Applied</b>	106	93	122	123	111
	<b>Accepted</b>	52	54	68	53	49
	<b>% Accepted</b>	49%	58%	56%	43%	44%
	<b>Enrolled</b>	24	26	48	31	33
	<b>% Enrolled</b>	46%	48%	71%	58%	67%
<b>Out of State</b>	<b>Applied</b>	133	90	102	108	88
	<b>Accepted</b>	72	46	29	48	47
	<b>% Accepted</b>	54%	51%	28%	44%	53%
	<b>Enrolled</b>	38	20	13	22	18
	<b>% Enrolled</b>	53%	43%	45%	46%	38%
<b>Out of Country</b>	<b>Applied</b>	238	209	196	202	128
	<b>Accepted</b>	82	95	74	91	88
	<b>% Accepted</b>	34%	45%	38%	45%	69%
	<b>Enrolled</b>	47	37	32	29	41
	<b>% Enrolled</b>	57%	39%	43%	32%	47%
<b>Total</b>	<b>Applied</b>	685	554	613	602	510
	<b>Accepted</b>	336	304	290	308	304
	<b>% Applied</b>	49%	55%	47%	51%	60%
	<b>Enrolled</b>	209	170	188	175	183
	<b>% Enrolled</b>	62%	56%	65%	57%	60%

## First Time Doctoral Applied, Accepted, and Enrolled by Residence Category

