



# Student Enrollment

The UTSA Fact Book  
Office of Institutional Research and Analysis  
Fall 2024

## Student Enrollment

Enrollment data come from Census Day enrollment files. Students in fully online programs are included.

Enrollment information is also available from [interactive dashboards](#) at the Office of Institutional Research and Analysis web page.

Contact the Office the Institutional Research and Analysis with questions: [Institutional.Research@utsa.edu](mailto:Institutional.Research@utsa.edu)

### Number of Students Enrolled by Classification (Fall Semesters)

	Fa. 2020	Fa. 2021	Fa. 2022	Fa. 2023	Fa. 2024
<b>Freshmen</b>	6,349 18%	6,574 19%	6,865 20%	7,061 20%	7,063 20%
<b>Sophomore</b>	5,567 16%	5,416 16%	5,345 16%	5,628 16%	5,826 16%
<b>Junior</b>	7,546 22%	7,482 22%	7,411 22%	7,609 22%	7,860 22%
<b>Senior</b>	10,097 29%	9,994 29%	9,705 28%	9,722 28%	10,140 28%
<b>Post-Bac</b>	524 2%	445 1%	438 1%	411 1%	368 1%
<b>Masters</b>	3,760 11%	3,867 11%	3,644 11%	3,490 10%	3,501 10%
<b>Doctoral</b>	899 3%	956 3%	936 3%	943 3%	1,012 3%
<b>Total</b>	34,742 100%	34,734 100%	34,344 100%	34,864 100%	35,770 100%

### Semester Credit Hours of Students Enrolled by Classification (Fall Semesters)

	Fa. 2020	Fa. 2021	Fa. 2022	Fa. 2023	Fa. 2024
<b>Freshmen</b>	79,804 20%	80,215 21%	83,990 22%	87,047 22%	85,575 21%
<b>Sophomore</b>	71,655 18%	68,099 17%	66,643 17%	72,024 18%	74,046 18%
<b>Junior</b>	94,310 23%	90,560 23%	88,135 23%	92,390 23%	95,952 24%
<b>Senior</b>	118,358 29%	114,421 29%	109,202 28%	109,850 28%	116,132 29%
<b>Post-Bac</b>	3,957 1%	3,364 1%	3,402 1%	3,043 1%	2,567 1%
<b>Masters</b>	27,991 7%	27,904 7%	25,496 7%	25,234 6%	25,391 6%
<b>Doctoral</b>	6,085 2%	6,390 2%	6,325 2%	6,605 2%	7,183 2%
<b>Total</b>	402,160 100%	390,953 100%	383,193 100%	396,193 100%	406,846 100%

**Number of Students Enrolled by Level (Fall Semesters)**

	Fa. 2020	Fa. 2021	Fa. 2022	Fa. 2023	Fa. 2024
<b>Undergraduate</b>	29,559 85%	29,466 85%	29,326 85%	30,020 86%	30,889 86%
<b>Post-Bac</b>	524 2%	445 1%	438 1%	411 1%	368 1%
<b>Masters</b>	3,760 11%	3,867 11%	3,644 11%	3,490 10%	3,501 10%
<b>Doctoral</b>	899 3%	956 3%	936 3%	943 3%	1,012 3%
<b>Total</b>	34,742 100%	34,734 100%	34,344 100%	34,864 100%	35,770 100%

**Semester Credit Hours Students by Level (Fall Semesters)**

	Fa. 2020	Fa. 2021	Fa. 2022	Fa. 2023	Fa. 2024
<b>Undergraduate</b>	364,127 91%	353,295 90%	347,970 91%	361,311 91%	371,705 91%
<b>Post-Bac</b>	3,957 1%	3,364 1%	3,402 1%	3,043 1%	2,567 1%
<b>Masters</b>	27,991 7%	27,904 7%	25,496 7%	25,234 6%	25,391 6%
<b>Doctoral</b>	6,085 2%	6,390 2%	6,325 2%	6,605 2%	7,183 2%
<b>Total</b>	402,160 100%	390,953 100%	383,193 100%	396,193 100%	406,846 100%

**Number of Students Enrolled by Course Load (Fall Semesters)**

	<b>Fa. 2020</b>	<b>Fa. 2021</b>	<b>Fa. 2022</b>	<b>Fa. 2023</b>	<b>Fa. 2024</b>
<b>Full Time</b>	25,333 73%	24,350 70%	23,882 70%	24,873 71%	25,513 71%
<b>Part Time</b>	9,409 27%	10,384 30%	10,462 30%	9,991 29%	10,257 29%
<b>Total</b>	34,742 100%	34,734 100%	34,344 100%	34,864 100%	35,770 100%

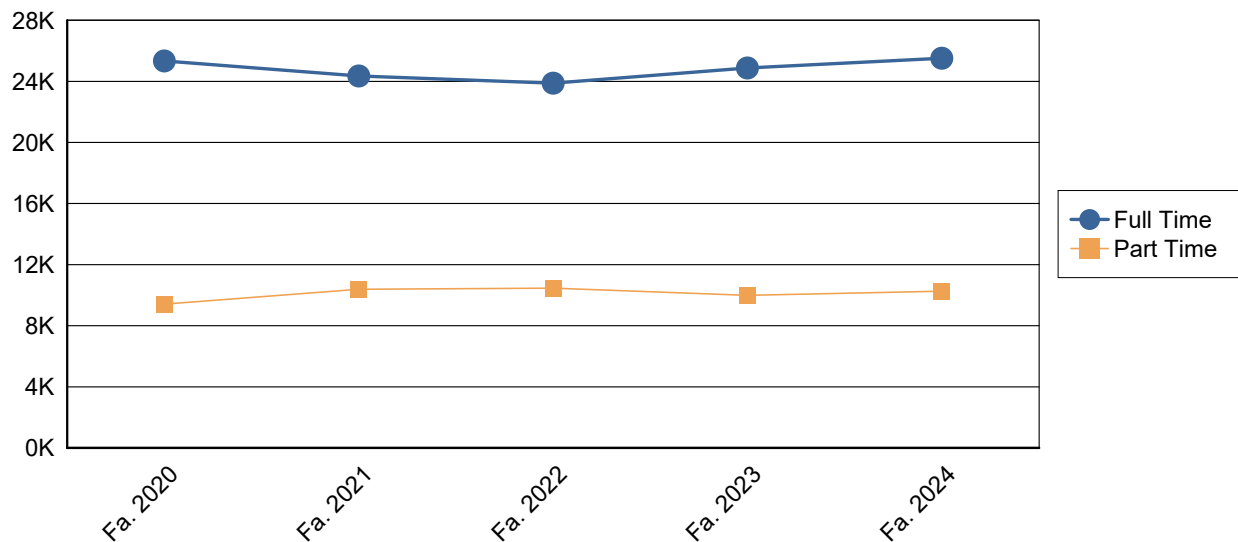
**Semester Credit Hours Students by Course Load (Fall Semesters)**

	<b>Fa. 2020</b>	<b>Fa. 2021</b>	<b>Fa. 2022</b>	<b>Fa. 2023</b>	<b>Fa. 2024</b>
<b>Full Time</b>	338,469 84%	319,600 82%	311,996 81%	328,198 83%	336,353 83%
<b>Part Time</b>	63,691 16%	71,353 18%	71,197 19%	67,995 17%	70,493 17%
<b>Total</b>	402,160 100%	390,953 100%	383,193 100%	396,193 100%	406,846 100%

## Number of Students Enrolled by Level and Course Load (Fall Semesters)

		Fa. 2020	Fa. 2021	Fa. 2022	Fa. 2023	Fa. 2024
Undergraduate	Full Time	22,895 77%	22,001 75%	21,605 74%	22,521 75%	23,059 75%
	Part Time	6,664 23%	7,465 25%	7,721 26%	7,499 25%	7,830 25%
	Total	29,559 100%	29,466 100%	29,326 100%	30,020 100%	30,889 100%
Post-Bac	Full Time	211 40%	187 42%	200 46%	159 39%	136 37%
	Part Time	313 60%	258 58%	238 54%	252 61%	232 63%
	Total	524 100%	445 100%	438 100%	411 100%	368 100%
Masters	Full Time	1,744 46%	1,689 44%	1,546 42%	1,622 46%	1,672 48%
	Part Time	2,016 54%	2,178 56%	2,098 58%	1,868 54%	1,829 52%
	Total	3,760 100%	3,867 100%	3,644 100%	3,490 100%	3,501 100%
Doctoral	Full Time	483 54%	473 49%	531 57%	571 61%	646 64%
	Part Time	416 46%	483 51%	405 43%	372 39%	366 36%
	Total	899 100%	956 100%	936 100%	943 100%	1,012 100%
Total		34,742 100%	34,734 100%	34,344 100%	34,864 100%	35,770 100%

## Enrollment by Course Load



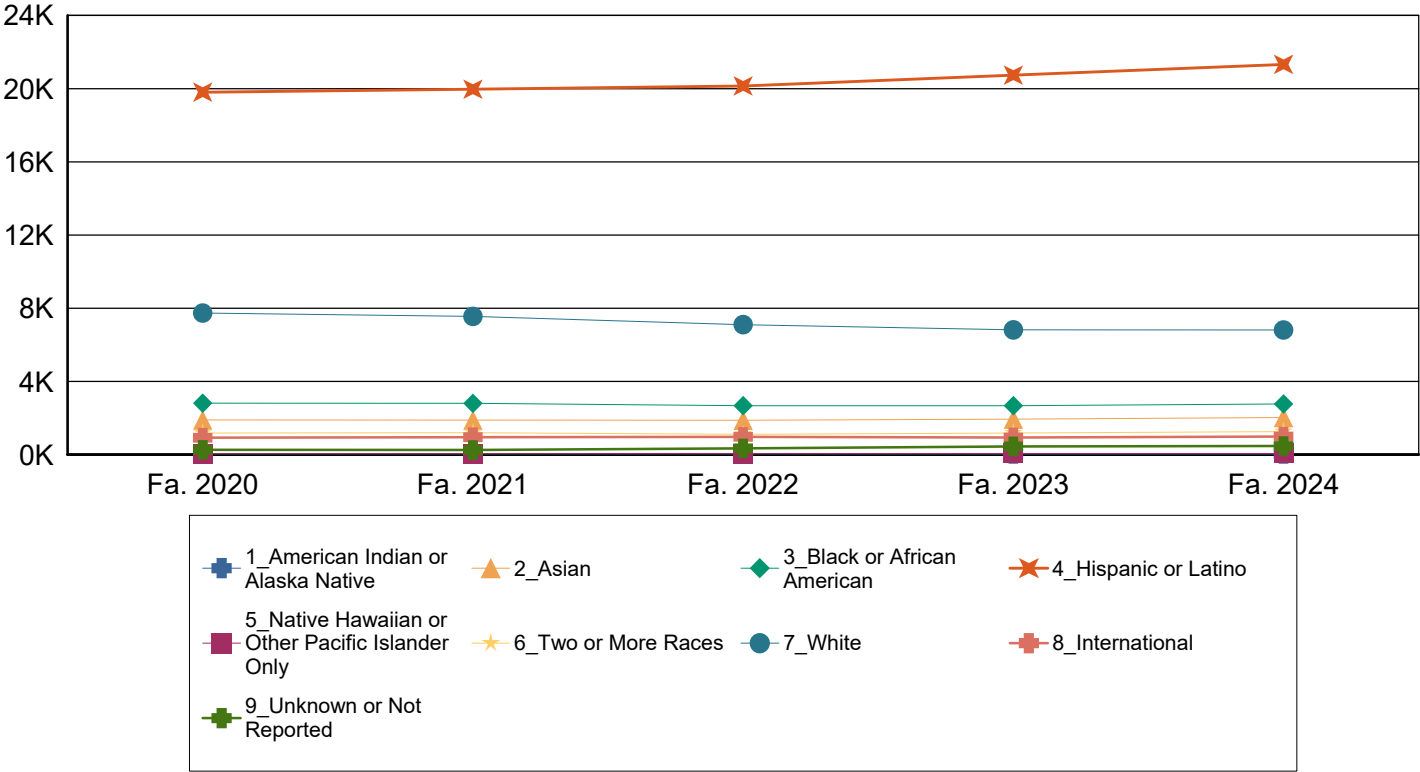
### Number of Students Enrolled by Ethnicity (Fall Semesters)

	Fa. 2020	Fa. 2021	Fa. 2022	Fa. 2023	Fa. 2024
<b>American Indian or Alaska Native</b>	51 0%	47 0%	45 0%	42 0%	41 0%
<b>Asian</b>	1,899 5%	1,890 5%	1,880 5%	1,941 6%	2,027 6%
<b>Black or African American</b>	2,812 8%	2,803 8%	2,679 8%	2,679 8%	2,772 8%
<b>Hispanic or Latino</b>	19,809 57%	19,969 57%	20,148 59%	20,739 59%	21,326 60%
<b>Native Hawaiian or Other Pacific Islander</b>	54 0%	59 0%	54 0%	65 0%	63 0%
<b>Two or More Races</b>	1,187 3%	1,202 3%	1,114 3%	1,183 3%	1,263 4%
<b>White</b>	7,739 22%	7,555 22%	7,105 21%	6,820 20%	6,812 19%
<b>International</b>	927 3%	956 3%	974 3%	942 3%	992 3%
<b>Unknown or Not Reported</b>	264 1%	253 1%	345 1%	453 1%	474 1%
<b>Total</b>	34,742 100%	34,734 100%	34,344 100%	34,864 100%	35,770 100%

### Semester Credit Hours by Ethnicity (Fall Semesters)

	Fa. 2020	Fa. 2021	Fa. 2022	Fa. 2023	Fa. 2024
<b>American Indian or Alaska Native</b>	529 0%	477 0%	415 0%	422 0%	419 0%
<b>Asian</b>	23,339 6%	22,402 6%	22,177 6%	23,111 6%	24,185 6%
<b>Black or African American</b>	33,756 8%	32,531 8%	30,924 8%	31,630 8%	32,587 8%
<b>Hispanic or Latino</b>	229,977 57%	225,493 58%	225,037 59%	235,212 59%	242,283 60%
<b>Native Hawaiian or Other Pacific Islander</b>	602 0%	679 0%	590 0%	669 0%	664 0%
<b>Two or More Races</b>	14,462 4%	14,231 4%	12,928 3%	13,924 4%	14,670 4%
<b>White</b>	87,372 22%	82,916 21%	77,492 20%	76,231 19%	76,194 19%
<b>International</b>	9,701 2%	9,893 3%	9,968 3%	9,944 3%	10,713 3%
<b>Unknown or Not Reported</b>	2,422 1%	2,331 1%	3,662 1%	5,050 1%	5,131 1%
<b>Total</b>	402,160 100%	390,953 100%	383,193 100%	396,193 100%	406,846 100%

# Enrollment by Ethnicity



## Enrollment by Level and Ethnicity (Fall Semesters)

		Fa. 2020	Fa. 2021	Fa. 2022	Fa. 2023	Fa. 2024
Undergraduate	American Indian or Alaska Native	37 0%	35 0%	33 0%	34 0%	34 0%
	Asian	1,650 6%	1,645 6%	1,650 6%	1,730 6%	1,821 6%
	Black or African American	2,460 8%	2,430 8%	2,376 8%	2,402 8%	2,484 8%
	Hispanic or Latino	17,528 59%	17,551 60%	17,826 61%	18,396 61%	18,933 61%
	Native Hawaiian or Other Pacific	42 0%	46 0%	46 0%	47 0%	49 0%
	Two or More Races	1,089 4%	1,105 4%	1,005 3%	1,028 3%	1,089 4%
	White	6,181 21%	6,091 21%	5,721 20%	5,623 19%	5,637 18%
	International	427 1%	404 1%	398 1%	381 1%	436 1%
	Unknown or Not Reported	145 0%	159 1%	271 1%	379 1%	406 1%
	Total	29,559 100%	29,466 100%	29,326 100%	30,020 100%	30,889 100%

		Fa. 2020	Fa. 2021	Fa. 2022	Fa. 2023	Fa. 2024
Post-Bac	American Indian or Alaska Native	1 0%	2 0%	2 0%	1 0%	1 0%
	Asian	37 7%	26 6%	22 5%	24 6%	18 5%
	Black or African American	45 9%	40 9%	32 7%	30 7%	38 10%
	Hispanic or Latino	220 42%	191 43%	192 44%	195 47%	172 47%
	Native Hawaiian or Other Pacific	1 0%	3 1%	1 0%	1 0%	1 0%
	Two or More Races	16 3%	8 2%	13 3%	18 4%	18 5%
	White	186 35%	159 36%	158 36%	126 31%	111 30%
	International	2 0%	6 1%	9 2%	4 1%	0 0%
	Unknown or Not Reported	16 3%	10 2%	9 2%	12 3%	9 2%
	Total	524 100%	445 100%	438 100%	411 100%	368 100%
Masters	American Indian or Alaska Native	9 0%	5 0%	4 0%	2 0%	2 0%
	Asian	183 5%	184 5%	176 5%	155 4%	154 4%
	Black or African American	262 7%	288 7%	227 6%	210 6%	212 6%
	Hispanic or Latino	1,839 49%	1,955 51%	1,850 51%	1,862 53%	1,916 55%
	Native Hawaiian or Other Pacific	9 0%	8 0%	5 0%	12 0%	8 0%
	Two or More Races	73 2%	76 2%	78 2%	118 3%	134 4%
	White	1,110 30%	1,040 27%	965 26%	821 24%	801 23%
	International	201 5%	251 6%	293 8%	270 8%	237 7%
	Unknown or Not Reported	74 2%	60 2%	46 1%	40 1%	37 1%
	Total	3,760 100%	3,867 100%	3,644 100%	3,490 100%	3,501 100%
Doctoral	American Indian or Alaska Native	4 0%	5 1%	6 1%	5 1%	4 0%
	Asian	29 3%	35 4%	32 3%	32 3%	34 3%
	Black or African American	45 5%	45 5%	44 5%	37 4%	38 4%



		Fa. 2020	Fa. 2021	Fa. 2022	Fa. 2023	Fa. 2024
<b>Doctoral</b>	<b>Hispanic or Latino</b>	222 25%	272 28%	280 30%	286 30%	305 30%
	<b>Native Hawaiian or Other Pacific</b>	2 0%	2 0%	2 0%	5 1%	5 0%
	<b>Two or More Races</b>	9 1%	13 1%	18 2%	19 2%	22 2%
	<b>White</b>	262 29%	265 28%	261 28%	250 27%	263 26%
	<b>International</b>	297 33%	295 31%	274 29%	287 30%	319 32%
	<b>Unknown or Not Reported</b>	29 3%	24 3%	19 2%	22 2%	22 2%
	<b>Total</b>	899 100%	956 100%	936 100%	943 100%	1,012 100%
<b>Total</b>		34,742 100%	34,734 100%	34,344 100%	34,864 100%	35,770 100%

#### Number of Students Enrolled by Gender (Fall Semesters)

	Fa. 2020	Fa. 2021	Fa. 2022	Fa. 2023	Fa. 2024
<b>Female</b>	18,043 52%	18,313 53%	18,048 53%	18,310 53%	18,478 52%
<b>Male</b>	16,699 48%	16,421 47%	16,296 47%	16,554 47%	17,292 48%
<b>Total</b>	34,742 100%	34,734 100%	34,344 100%	34,864 100%	35,770 100%

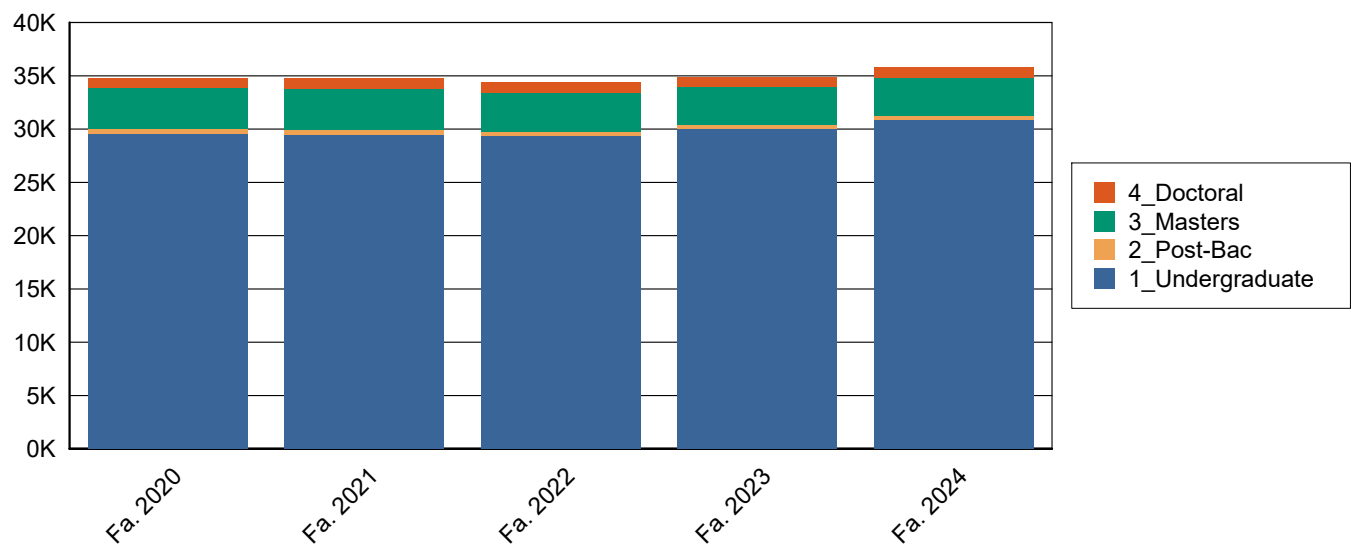
#### Semester Credit Hours of Students Enrolled by Gender (Fall Semesters)

	Fa. 2020	Fa. 2021	Fa. 2022	Fa. 2023	Fa. 2024
<b>Female</b>	210,225 52%	207,753 53%	202,815 53%	209,350 53%	211,700 52%
<b>Male</b>	191,935 48%	183,200 47%	180,378 47%	186,843 47%	195,146 48%
<b>Total</b>	402,160 100%	390,953 100%	383,193 100%	396,193 100%	406,846 100%

Enrollment by Level and Gender (Fall Semesters)

		Fa. 2020	Fa. 2021	Fa. 2022	Fa. 2023	Fa. 2024
Undergraduate	Female	15,150 51%	15,402 52%	15,309 52%	15,647 52%	15,761 51%
	Male	14,409 49%	14,064 48%	14,017 48%	14,373 48%	15,128 49%
	Total	29,559 100%	29,466 100%	29,326 100%	30,020 100%	30,889 100%
Post-Bac	Female	281 54%	230 52%	230 53%	221 54%	184 50%
	Male	243 46%	215 48%	208 47%	190 46%	184 50%
	Total	524 100%	445 100%	438 100%	411 100%	368 100%
Masters	Female	2,182 58%	2,217 57%	2,048 56%	1,979 57%	2,021 58%
	Male	1,578 42%	1,650 43%	1,596 44%	1,511 43%	1,480 42%
	Total	3,760 100%	3,867 100%	3,644 100%	3,490 100%	3,501 100%
Doctoral	Female	430 48%	464 49%	461 49%	463 49%	512 51%
	Male	469 52%	492 51%	475 51%	480 51%	500 49%
	Total	899 100%	956 100%	936 100%	943 100%	1,012 100%
Total		34,742 100%	34,734 100%	34,344 100%	34,864 100%	35,770 100%

Enrollment by Student Level



### Number of Students by Age Category (Fall Semesters)

	Fa. 2020	Fa. 2021	Fa. 2022	Fa. 2023	Fa. 2024
<b>Under 18</b>	488 1%	403 1%	357 1%	460 1%	437 1%
<b>18-22</b>	21,887 63%	22,048 63%	22,128 64%	22,781 65%	23,497 66%
<b>23-27</b>	6,967 20%	6,813 20%	6,694 19%	6,523 19%	6,800 19%
<b>28-32</b>	2,427 7%	2,368 7%	2,173 6%	2,138 6%	2,073 6%
<b>33-39</b>	1,549 4%	1,642 5%	1,567 5%	1,514 4%	1,423 4%
<b>40-49</b>	1,006 3%	1,032 3%	1,012 3%	1,044 3%	1,108 3%
<b>50+</b>	418 1%	428 1%	413 1%	404 1%	432 1%
<b>Total</b>	34,742 100%	34,734 100%	34,344 100%	34,864 100%	35,770 100%

### Semester Credit Hours by Age Category (Fall Semesters)

	Fa. 2020	Fa. 2021	Fa. 2022	Fa. 2023	Fa. 2024
<b>Under 18</b>	4,290 1%	3,874 1%	3,376 1%	3,897 1%	3,947 1%
<b>18-22</b>	282,888 70%	276,429 71%	274,774 72%	288,067 73%	296,096 73%
<b>23-27</b>	70,165 17%	66,430 17%	64,158 17%	63,342 16%	66,467 16%
<b>28-32</b>	21,650 5%	20,719 5%	18,590 5%	18,780 5%	18,253 4%
<b>33-39</b>	12,754 3%	13,273 3%	12,376 3%	12,069 3%	11,499 3%
<b>40-49</b>	7,641 2%	7,476 2%	7,336 2%	7,457 2%	7,949 2%
<b>50+</b>	2,772 1%	2,752 1%	2,583 1%	2,581 1%	2,635 1%
<b>Total</b>	402,160 100%	390,953 100%	383,193 100%	396,193 100%	406,846 100%

## Number of Students by Level and Age Category (Fall Semesters)

		Fa. 2020	Fa. 2021	Fa. 2022	Fa. 2023	Fa. 2024
Undergraduate	Under 18	488 2%	403 1%	357 1%	460 2%	437 1%
	18-22	21,411 72%	21,604 73%	21,705 74%	22,320 74%	22,994 74%
	23-27	4,946 17%	4,762 16%	4,717 16%	4,645 15%	4,871 16%
	28-32	1,356 5%	1,310 4%	1,198 4%	1,217 4%	1,216 4%
	33-39	782 3%	776 3%	749 3%	764 3%	726 2%
	40-49	440 1%	471 2%	456 2%	461 2%	478 2%
	50+	136 0%	140 0%	144 0%	153 1%	167 1%
	Total	29,559 100%	29,466 100%	29,326 100%	30,020 100%	30,889 100%
Post-Bac	18-22	28 5%	31 7%	32 7%	32 8%	37 10%
	23-27	181 35%	139 31%	144 33%	135 33%	116 32%
	28-32	108 21%	92 21%	81 18%	69 17%	59 16%
	33-39	86 16%	69 16%	71 16%	81 20%	65 18%
	40-49	69 13%	68 15%	64 15%	63 15%	57 15%
	50+	52 10%	46 10%	46 11%	31 8%	34 9%
	Total	524 100%	445 100%	438 100%	411 100%	368 100%
Masters	18-22	434 12%	397 10%	379 10%	412 12%	448 13%
	23-27	1,640 44%	1,719 44%	1,631 45%	1,520 44%	1,541 44%
	28-32	678 18%	680 18%	619 17%	584 17%	541 15%
	33-39	493 13%	578 15%	538 15%	460 13%	424 12%
	40-49	353 9%	342 9%	334 9%	364 10%	394 11%
	50+	162 4%	151 4%	143 4%	150 4%	153 4%
	Total	3,760 100%	3,867 100%	3,644 100%	3,490 100%	3,501 100%

		Fa. 2020	Fa. 2021	Fa. 2022	Fa. 2023	Fa. 2024
Doctoral	18-22	14 2%	16 2%	12 1%	17 2%	18 2%
	23-27	200 22%	193 20%	202 22%	223 24%	272 27%
	28-32	285 32%	286 30%	275 29%	268 28%	257 25%
	33-39	188 21%	219 23%	209 22%	209 22%	208 21%
	40-49	144 16%	151 16%	158 17%	156 17%	179 18%
	50+	68 8%	91 10%	80 9%	70 7%	78 8%
	Total	899 100%	956 100%	936 100%	943 100%	1,012 100%
Total		34,742 100%	34,734 100%	34,344 100%	34,864 100%	35,770 100%

# Semester Credit Hours of Students by Level and Age Category (Fall Semesters)

		Fa. 2020	Fa. 2021	Fa. 2022	Fa. 2023	Fa. 2024
<b>Undergraduate</b>	<b>Under 18</b>	4,290 1%	3,874 1%	3,376 1%	3,897 1%	3,947 1%
	<b>18-22</b>	278,426 76%	272,365 77%	271,134 78%	283,920 79%	291,598 78%
	<b>23-27</b>	54,440 15%	50,747 14%	49,344 14%	48,837 14%	51,558 14%
	<b>28-32</b>	14,166 4%	13,349 4%	11,842 3%	12,215 3%	12,149 3%
	<b>33-39</b>	7,629 2%	7,696 2%	7,100 2%	7,210 2%	6,846 2%
	<b>40-49</b>	4,072 1%	4,124 1%	4,018 1%	3,967 1%	4,276 1%
	<b>50+</b>	1,104 0%	1,140 0%	1,156 0%	1,265 0%	1,331 0%
	<b>Total</b>	364,127 100%	353,295 100%	347,970 100%	361,311 100%	371,705 100%
<b>Post-Bac</b>	<b>18-22</b>	193 5%	226 7%	229 7%	234 8%	251 10%
	<b>23-27</b>	1,357 34%	1,162 35%	1,176 35%	1,043 34%	890 35%
	<b>28-32</b>	865 22%	733 22%	671 20%	563 19%	426 17%
	<b>33-39</b>	697 18%	552 16%	617 18%	591 19%	455 18%
	<b>40-49</b>	526 13%	437 13%	426 13%	415 14%	370 14%
	<b>50+</b>	319 8%	254 8%	283 8%	197 6%	175 7%
	<b>Total</b>	3,957 100%	3,364 100%	3,402 100%	3,043 100%	2,567 100%
<b>Masters</b>	<b>18-22</b>	4,139 15%	3,691 13%	3,305 13%	3,743 15%	4,071 16%
	<b>23-27</b>	12,666 45%	12,895 46%	11,931 47%	11,531 46%	11,652 46%
	<b>28-32</b>	4,639 17%	4,523 16%	4,047 16%	3,931 16%	3,627 14%
	<b>33-39</b>	3,309 12%	3,745 13%	3,393 13%	2,977 12%	2,851 11%
	<b>40-49</b>	2,266 8%	2,154 8%	2,068 8%	2,269 9%	2,391 9%
	<b>50+</b>	972 3%	896 3%	752 3%	783 3%	799 3%
	<b>Total</b>	27,991 100%	27,904 100%	25,496 100%	25,234 100%	25,391 100%

		Fa. 2020	Fa. 2021	Fa. 2022	Fa. 2023	Fa. 2024
<b>Doctoral</b>	<b>18-22</b>	130 2%	147 2%	106 2%	170 3%	176 2%
	<b>23-27</b>	1,702 28%	1,626 25%	1,707 27%	1,931 29%	2,367 33%
	<b>28-32</b>	1,980 33%	2,114 33%	2,030 32%	2,071 31%	2,051 29%
	<b>33-39</b>	1,119 18%	1,280 20%	1,266 20%	1,291 20%	1,347 19%
	<b>40-49</b>	777 13%	761 12%	824 13%	806 12%	912 13%
	<b>50+</b>	377 6%	462 7%	392 6%	336 5%	330 5%
	<b>Total</b>	6,085 100%	6,390 100%	6,325 100%	6,605 100%	7,183 100%
<b>Total</b>		402,160 100%	390,953 100%	383,193 100%	396,193 100%	406,846 100%

#### Average Age by Level (Fall Semesters)

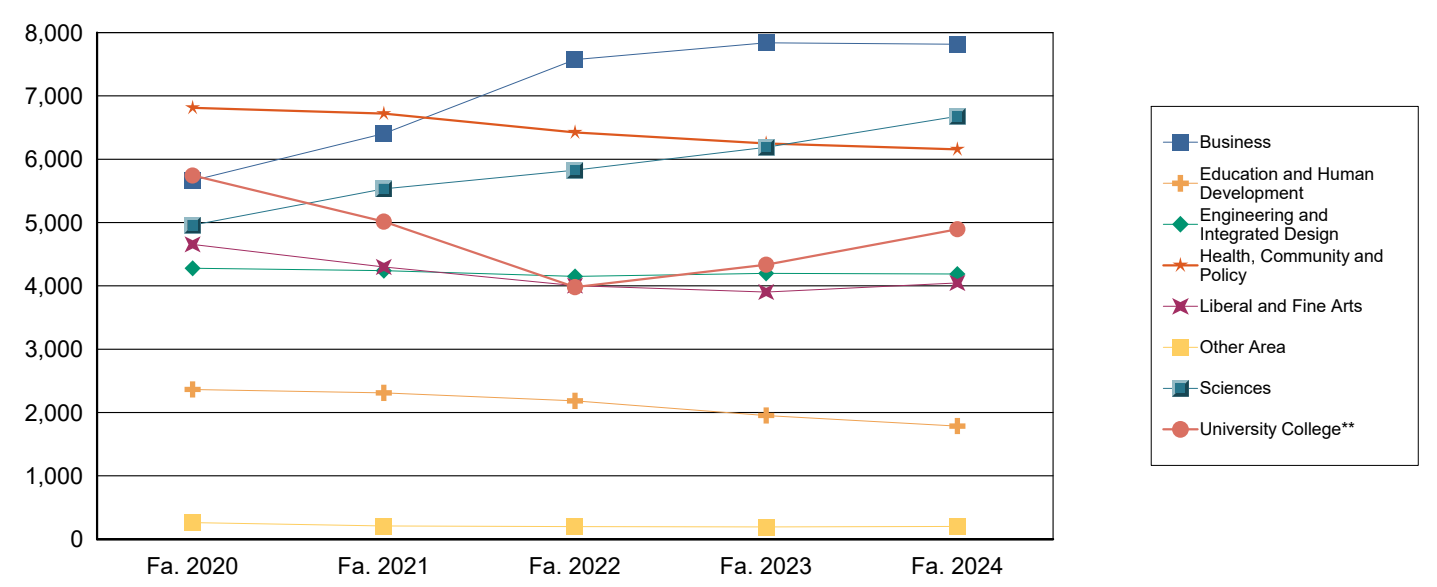
	Fa. 2020	Fa. 2021	Fa. 2022	Fa. 2023	Fa. 2024
<b>Undergraduate</b>	22	22	22	22	22
<b>Post-Bac</b>	33	33	33	33	33
<b>Masters</b>	30	30	30	30	30
<b>Doctoral</b>	34	35	35	34	34
<b>Total</b>	23	23	23	23	23

Number of Students Enrolled by College (Fall Semester)

	Fa. 2020	Fa. 2021	Fa. 2022	Fa. 2023	Fa. 2024
Business	5,664 16%	6,407 18%	7,574 22%	7,840 22%	7,817 22%
Education and Human Development	2,365 7%	2,311 7%	2,185 6%	1,954 6%	1,787 5%
Engineering and Integrated Design	4,278 12%	4,241 12%	4,149 12%	4,198 12%	4,187 12%
Health, Community and Policy	6,812 20%	6,720 19%	6,424 19%	6,250 18%	6,157 17%
Liberal and Fine Arts	4,656 13%	4,299 12%	4,005 12%	3,904 11%	4,047 11%
Other Area*	263 1%	208 1%	199 1%	193 1%	201 1%
Sciences	4,960 14%	5,532 16%	5,827 17%	6,190 18%	6,679 19%
University College**	5,744 17%	5,016 14%	3,981 12%	4,335 12%	4,895 14%
Total	34,742 100%	34,734 100%	34,344 100%	34,864 100%	35,770 100%

\* Other Area includes students who are majoring in Honors Studies, Translational Science and students who are not degree seeking. These were combined to maintain student confidentiality.

Enrollment by College





## Number of University College Studies Students by Intended Program of Study

	Fa. 2020	Fa. 2021	Fa. 2022	Fa. 2023	Fa. 2024
<b>Accounting</b>	257 5%	144 4%	72 2%	59 2%	100 3%
<b>Biochemistry</b>	127 3%	106 3%	50 2%	15 0%	0 0%
<b>Biomedical Engineering</b>	50 1%	38 1%	81 3%	59 2%	80 2%
<b>Business Analytics</b>	0 0%	145 4%	50 2%	88 3%	147 4%
<b>Chemical Engineering</b>	35 1%	26 1%	27 1%	28 1%	41 1%
<b>Civil Engineering</b>	70 1%	91 2%	117 4%	124 4%	132 4%
<b>Computer Engineering</b>	64 1%	56 1%	64 2%	47 2%	74 2%
<b>Computer Science</b>	531 11%	270 7%	274 9%	179 6%	30 1%
<b>Construction Science &amp; Management</b>	33 1%	52 1%	43 1%	48 2%	79 2%
<b>Cyber Security</b>	450 9%	264 6%	134 5%	189 6%	280 8%
<b>Cyber Security Online</b>	17 0%	61 2%	53 2%	31 1%	53 2%
<b>Economics</b>	45 1%	47 1%	18 1%	39 1%	32 1%
<b>Electrical Engineering</b>	53 1%	58 1%	68 2%	71 2%	97 3%
<b>Finance</b>	285 6%	186 5%	77 3%	114 4%	190 6%
<b>Health</b>	98 2%	39 1%	9 0%	0 0%	0 0%
<b>Information Systems</b>	71 1%	55 1%	25 1%	27 1%	19 1%
<b>Kinesiology</b>	178 4%	58 1%	12 0%	0 0%	0 0%
<b>Management</b>	509 10%	350 9%	159 5%	159 5%	196 6%
<b>Marketing</b>	367 8%	317 8%	148 5%	152 5%	203 6%
<b>Mechanical Engineering</b>	152 3%	154 4%	185 6%	208 7%	301 9%
<b>Music</b>	45 1%	28 1%	37 1%	44 1%	32 1%

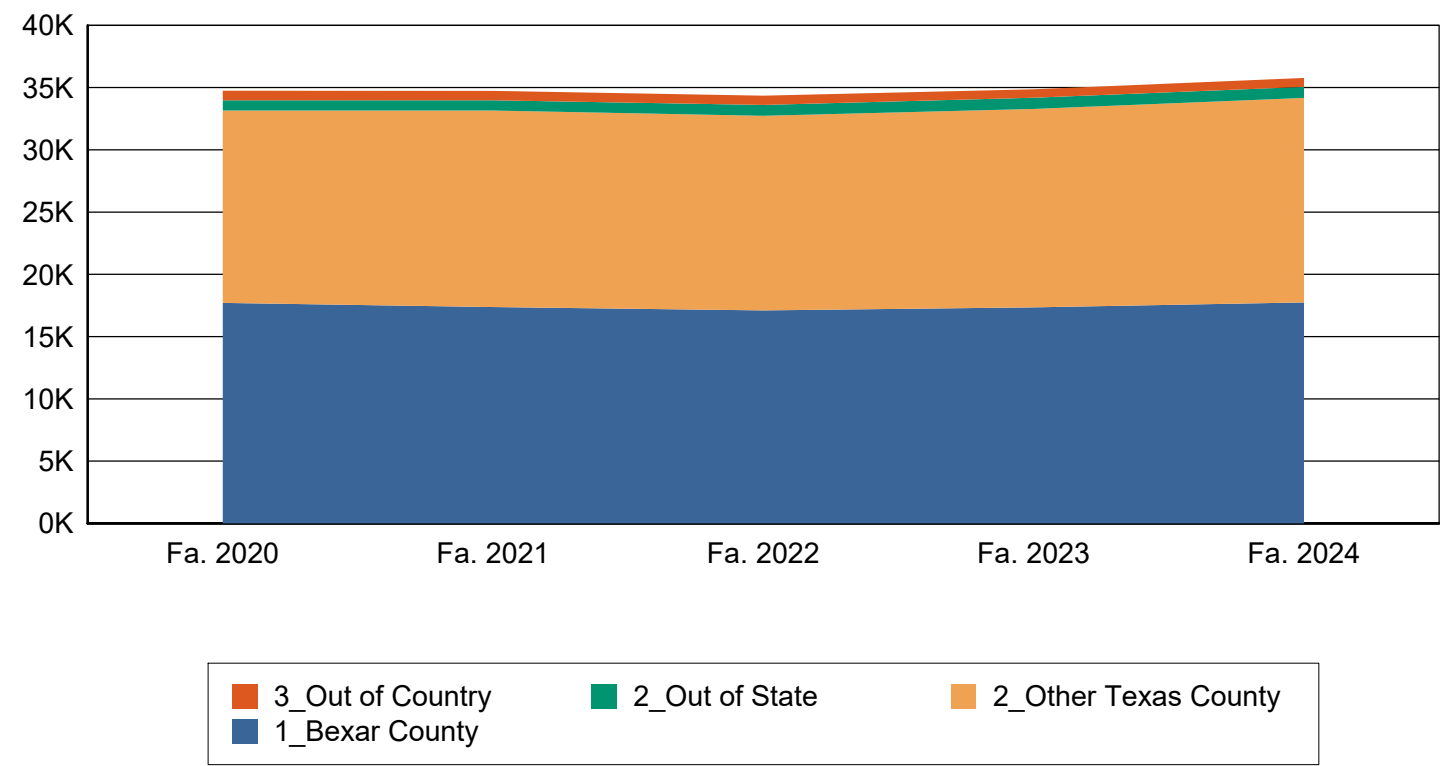
	Fa. 2020	Fa. 2021	Fa. 2022	Fa. 2023	Fa. 2024
<b>Nutrition and Dietetics</b>	89 2%	121 3%	104 3%	93 3%	69 2%
<b>Nutrition and Health</b>	0 0%	0 0%	0 0%	0 0%	19 1%
<b>Operations and Supply Chain Management</b>	0 0%	0 0%	6 0%	6 0%	13 0%
<b>Other Program</b>	295 6%	125 3%	17 1%	26 1%	42 1%
<b>Real Estate Finance &amp; Development</b>	83 2%	88 2%	59 2%	53 2%	58 2%
<b>Social Work</b>	0 0%	0 0%	0 0%	7 0%	6 0%
<b>Undeclared</b>	986 20%	1,185 29%	1,088 37%	1,163 38%	1,095 32%
<b>Total</b>	4,890 100%	4,064 100%	2,977 100%	3,029 100%	3,388 100%

Note: Other program combines intended programs with fewer than 5 students. These were combined to maintain student confidentiality.

Enrollment by Residence Category (Fall Semesters)

	Fa. 2020	Fa. 2021	Fa. 2022	Fa. 2023	Fa. 2024
Bexar County	17,708 51%	17,378 50%	17,104 50%	17,352 50%	17,744 50%
Other Texas County	15,448 44%	15,777 45%	15,625 45%	15,927 46%	16,427 46%
Out of State	822 2%	820 2%	874 3%	908 3%	881 2%
Out of Country	764 2%	759 2%	741 2%	677 2%	718 2%
Total	34,742 100%	34,734 100%	34,344 100%	34,864 100%	35,770 100%

Enrollment by Residence



## Students Enrolled by Texas Economic Region (Fall Semesters)

	Fa. 2020	Fa. 2021	Fa. 2022	Fa. 2023	Fa. 2024
<b>Alamo</b>	20,357 59%	20,057 58%	19,726 57%	20,141 58%	20,740 58%
<b>Capital</b>	2,338 7%	2,414 7%	2,395 7%	2,473 7%	2,608 7%
<b>Central</b>	531 2%	543 2%	530 2%	483 1%	554 2%
<b>Gulf Coast</b>	3,819 11%	3,865 11%	3,867 11%	3,819 11%	3,921 11%
<b>High Plains</b>	95 0%	86 0%	120 0%	113 0%	113 0%
<b>Metroplex</b>	869 3%	816 2%	785 2%	818 2%	833 2%
<b>Northwest Texas</b>	84 0%	86 0%	80 0%	68 0%	76 0%
<b>South Texas</b>	4,263 12%	4,455 13%	4,392 13%	4,463 13%	4,434 12%
<b>Southeast Texas</b>	101 0%	101 0%	95 0%	114 0%	93 0%
<b>Upper East Texas</b>	96 0%	95 0%	95 0%	101 0%	83 0%
<b>Upper Rio Grande</b>	362 1%	401 1%	394 1%	423 1%	451 1%
<b>West Texas</b>	241 1%	236 1%	250 1%	263 1%	265 1%
<b>Not In Texas</b>	1,586 5%	1,579 5%	1,615 5%	1,585 5%	1,599 4%
<b>Total</b>	34,742 100%	34,734 100%	34,344 100%	34,864 100%	35,770 100%



The map of the regions below comes from the Texas Comptroller's website at <http://www.window.state.tx.us>. A full listing of counties is available on the following page.

## Texas Economic Regions

**Alamo:** Atascosa, Bandera, Bexar, Calhoun, Comal, DeWitt, Frio, Gillespie, Goliad, Gonzales, Guadalupe, Jackson, Karnes, Kendall, Kerr, Lavaca, Medina, Victoria, Wilson

**Capital:** Bastrop, Blanco, Burnet, Caldwell, Fayette, Hays, Lee, Llano, Travis, Williamson

**Central:** Bell, Bosque, Brazos, Burleson, Coryell, Falls, Freestone, Grimes, Hamilton, Hill, Lampasas, Leon, Limestone, Madison, McLennan, Milam, Mills, Robertson, San Saba, Washington

**Gulf Coast:** Austin, Brazoria, Chambers, Colorado, Fort Bend, Galveston, Harris, Liberty, Matagorda, Montgomery, Walker, Waller, Wharton

**High Plains:** Armstrong, Bailey, Briscoe, Carson, Castro, Childress, Cochran, Collingsworth, Crosby, Dallam, Deaf Smith, Dickens, Donley, Floyd, Garza, Gray, Hale, Hall, Hansford, Hartley, Hemphill, Hockley, Hutchinson, King, Lamb, Lipscomb, Lubbock, Lynn, Moore, Motley, Ochiltree, Oldham, Parmer, Potter, Randall, Roberts, Sherman, Swisher, Terry, Wheeler, Yoakum

**Metroplex:** Collin, Cooke, Dallas, Denton, Ellis, Erath, Fannin, Grayson, Hood, Hunt, Johnson, Kaufman, Navarro, Palo Pinto, Parker, Rockwall, Somervell, Tarrant, Wise

**Northwest Texas:** Archer, Baylor, Brown, Callahan, Clay, Coleman, Comanche, Cottle, Eastland, Fisher, Foard, Hardeman, Haskell, Jack, Jones, Kent, Knox, Mitchell, Montague, Nolan, Runnels, Scurry, Shackelford, Stephens, Stonewall, Taylor, Throckmorton, Wichita, Wilbarger, Young

**South Texas:** Aransas, Bee, Brooks, Cameron, Dimmit, Duval, Edwards, Hidalgo, Jim Hogg, Jim Wells, Kenedy, Kinney, Kleberg, La Salle, Live Oak, Maverick, McMullen, Nueces, Real, Refugio, San Patricio, Starr, Uvalde, Val Verde, Webb, Willacy, Zapata, Zavala

**Southeast Texas:** Angelina, Hardin, Houston, Jasper, Jefferson, Nacogdoches, Newton, Orange, Polk, Sabine, San Augustine, San Jacinto, Shelby, Trinity, Tyler

**Upper East Texas:** Anderson, Bowie, Camp, Cass, Cherokee, Delta, Franklin, Gregg, Harrison, Henderson, Hopkins, Lamar, Marion, Morris, Panola, Rains, Red River, Rusk, Smith, Titus, Upshur, Van Zandt, Wood

**Upper Rio Grande:** Brewster, Culberson, El Paso, Hudspeth, Jeff Davis, Presidio

**West Texas:** Andrews, Borden, Coke, Concho, Crane, Crockett, Dawson, Ector, Gaines, Glasscock, Howard, Irion, Kimble, Loving, Martin, Mason, McCulloch, Menard, Midland, Pecos, Reagan, Reeves, Schleicher, Sterling, Sutton, Terrell, Tom Green, Upton, Ward, Winkler

## Current College Structure Enrollment by Gender (Fall Semesters)

		Fa. 2020	Fa. 2021	Fa. 2022	Fa. 2023	Fa. 2024
<b>Business</b>	<b>Female</b>	2,144 38%	2,554 40%	2,989 39%	3,108 40%	3,013 39%
	<b>Male</b>	3,520 62%	3,853 60%	4,585 61%	4,732 60%	4,804 61%
	<b>Total</b>	5,664 100%	6,407 100%	7,574 100%	7,840 100%	7,817 100%
<b>Education and Human Development</b>	<b>Female</b>	2,021 85%	1,972 85%	1,867 85%	1,670 85%	1,542 86%
	<b>Male</b>	344 15%	339 15%	318 15%	284 15%	245 14%
	<b>Total</b>	2,365 100%	2,311 100%	2,185 100%	1,954 100%	1,787 100%
<b>Engineering and Integrated Design</b>	<b>Female</b>	1,222 29%	1,296 31%	1,316 32%	1,364 32%	1,345 32%
	<b>Male</b>	3,056 71%	2,945 69%	2,833 68%	2,834 68%	2,842 68%
	<b>Total</b>	4,278 100%	4,241 100%	4,149 100%	4,198 100%	4,187 100%
<b>Health, Community and Policy</b>	<b>Female</b>	4,590 67%	4,631 69%	4,465 70%	4,381 70%	4,322 70%
	<b>Male</b>	2,222 33%	2,089 31%	1,959 30%	1,869 30%	1,835 30%
	<b>Total</b>	6,812 100%	6,720 100%	6,424 100%	6,250 100%	6,157 100%
<b>Liberal and Fine Arts</b>	<b>Female</b>	2,838 61%	2,675 62%	2,535 63%	2,520 65%	2,581 64%
	<b>Male</b>	1,818 39%	1,624 38%	1,470 37%	1,384 35%	1,466 36%
	<b>Total</b>	4,656 100%	4,299 100%	4,005 100%	3,904 100%	4,047 100%
<b>Other Area</b>	<b>Female</b>	146 56%	98 47%	110 55%	88 46%	83 41%
	<b>Male</b>	117 44%	110 53%	89 45%	105 54%	118 59%
	<b>Total</b>	263 100%	208 100%	199 100%	193 100%	201 100%
<b>Sciences</b>	<b>Female</b>	2,506 51%	2,794 51%	2,962 51%	3,131 51%	3,361 50%
	<b>Male</b>	2,454 49%	2,738 49%	2,865 49%	3,059 49%	3,318 50%
	<b>Total</b>	4,960 100%	5,532 100%	5,827 100%	6,190 100%	6,679 100%

		Fa. 2020	Fa. 2021	Fa. 2022	Fa. 2023	Fa. 2024
University College**	Female	2,576 45%	2,293 46%	1,804 45%	2,048 47%	2,231 46%
	Male	3,168 55%	2,723 54%	2,177 55%	2,287 53%	2,664 54%
	Total	5,744 100%	5,016 100%	3,981 100%	4,335 100%	4,895 100%
Total		34,742 100%	34,734 100%	34,344 100%	34,864 100%	35,770 100%

\* Other Area includes students who are majoring in Honors Studies, Translational Science and students who are not degree seeking. These were combined to maintain student confidentiality.

\*\*Increase in student enrollment in University College in Fall 2019 due to studies program implementation.

## Current College Structure Enrollment by Ethnicity (Fall Semesters)

		Fa. 2020	Fa. 2021	Fa. 2022	Fa. 2023	Fa. 2024
Business	American Indian or Alaska Native	12 0%	12 0%	14 0%	10 0%	6 0%
	Asian	383 7%	418 7%	483 6%	515 7%	508 6%
	Black or African American	427 8%	481 8%	577 8%	577 7%	592 8%
	Hispanic or Latino	2,916 51%	3,429 54%	4,187 55%	4,526 58%	4,515 58%
	Native Hawaiian or Other Pacific	16 0%	18 0%	17 0%	26 0%	20 0%
	Two or More Races	171 3%	207 3%	234 3%	269 3%	303 4%
	White	1,473 26%	1,558 24%	1,741 23%	1,602 20%	1,531 20%
	International	208 4%	229 4%	253 3%	216 3%	228 3%
	Unknown or Not Reported	58 1%	55 1%	68 1%	99 1%	114 1%
	Total	5,664 100%	6,407 100%	7,574 100%	7,840 100%	7,817 100%
Education and Human Development	American Indian or Alaska Native	5 0%	7 0%	6 0%	6 0%	2 0%
	Asian	44 2%	40 2%	40 2%	41 2%	34 2%
	Black or African American	153 6%	159 7%	137 6%	119 6%	96 5%
	Hispanic or Latino	1,474 62%	1,454 63%	1,430 65%	1,311 67%	1,191 67%
	Native Hawaiian or Other Pacific	1 0%	1 0%	2 0%	1 0%	1 0%
	Two or More Races	45 2%	46 2%	41 2%	37 2%	43 2%
	White	586 25%	550 24%	486 22%	396 20%	379 21%
	International	29 1%	33 1%	31 1%	31 2%	29 2%
	Unknown or Not Reported	28 1%	21 1%	12 1%	12 1%	12 1%
	Total	2,365 100%	2,311 100%	2,185 100%	1,954 100%	1,787 100%
Engineering and Integrated Design	American Indian or Alaska Native	7 0%	7 0%	7 0%	7 0%	4 0%
	Asian	239 6%	256 6%	211 5%	197 5%	203 5%
	Black or African American	238 6%	251 6%	226 5%	232 6%	201 5%



		Fa. 2020	Fa. 2021	Fa. 2022	Fa. 2023	Fa. 2024
<b>Engineering and Integrated Design</b>	<b>Hispanic or Latino</b>	2,347 55%	2,354 56%	2,400 58%	2,490 59%	2,499 60%
	<b>Native Hawaiian or Other Pacific</b>	9 0%	9 0%	8 0%	11 0%	10 0%
	<b>Two or More Races</b>	133 3%	128 3%	106 3%	109 3%	126 3%
	<b>White</b>	944 22%	898 21%	861 21%	823 20%	808 19%
	<b>International</b>	321 8%	304 7%	282 7%	275 7%	273 7%
	<b>Unknown or Not Reported</b>	40 1%	34 1%	48 1%	54 1%	63 2%
	<b>Total</b>	4,278 100%	4,241 100%	4,149 100%	4,198 100%	4,187 100%
<b>Health, Community and Policy</b>	<b>American Indian or Alaska Native</b>	6 0%	8 0%	2 0%	3 0%	8 0%
	<b>Asian</b>	299 4%	296 4%	295 5%	277 4%	268 4%
	<b>Black or African American</b>	752 11%	705 10%	635 10%	606 10%	600 10%
	<b>Hispanic or Latino</b>	4,244 62%	4,200 63%	4,149 65%	4,071 65%	4,036 66%
	<b>Native Hawaiian or Other Pacific</b>	10 0%	12 0%	6 0%	4 0%	6 0%
	<b>Two or More Races</b>	241 4%	247 4%	200 3%	208 3%	208 3%
	<b>White</b>	1,170 17%	1,149 17%	1,026 16%	952 15%	910 15%
	<b>International</b>	58 1%	66 1%	62 1%	60 1%	63 1%
	<b>Unknown or Not Reported</b>	32 0%	37 1%	49 1%	69 1%	58 1%
	<b>Total</b>	6,812 100%	6,720 100%	6,424 100%	6,250 100%	6,157 100%
<b>Liberal and Fine Arts</b>	<b>American Indian or Alaska Native</b>	6 0%	6 0%	3 0%	2 0%	1 0%
	<b>Asian</b>	145 3%	126 3%	114 3%	94 2%	116 3%
	<b>Black or African American</b>	365 8%	343 8%	302 8%	288 7%	279 7%
	<b>Hispanic or Latino</b>	2,766 59%	2,576 60%	2,413 60%	2,384 61%	2,503 62%
	<b>Native Hawaiian or Other Pacific</b>	6 0%	5 0%	5 0%	7 0%	7 0%
	<b>Two or More Races</b>	197 4%	172 4%	159 4%	140 4%	145 4%
	<b>White</b>	1,105 24%	1,007 23%	932 23%	898 23%	906 22%

		Fa. 2020	Fa. 2021	Fa. 2022	Fa. 2023	Fa. 2024
Liberal and Fine Arts	International	39 1%	48 1%	47 1%	48 1%	47 1%
	Unknown or Not Reported	27 1%	16 0%	30 1%	43 1%	43 1%
	Total	4.656 100%	4.299 100%	4.005 100%	3.904 100%	4.047 100%
Other Area*	American Indian or Alaska Native	1 0%	0 0%	1 1%	0 0%	1 0%
	Asian	28 11%	10 5%	10 5%	10 5%	13 6%
	Black or African American	20 8%	18 9%	16 8%	20 10%	17 8%
	Hispanic or Latino	120 46%	99 48%	96 48%	94 49%	83 41%
	Native Hawaiian or Other Pacific	0 0%	0 0%	2 1%	2 1%	1 0%
	Two or More Races	8 3%	6 3%	9 5%	9 5%	9 4%
	White	77 29%	64 31%	49 25%	39 20%	46 23%
	International	0 0%	7 3%	15 8%	12 6%	8 4%
	Unknown or Not Reported	9 3%	4 2%	1 1%	7 4%	23 11%
	Total	263 100%	208 100%	199 100%	193 100%	201 100%
Sciences	American Indian or Alaska Native	8 0%	5 0%	8 0%	8 0%	11 0%
	Asian	418 8%	458 8%	485 8%	548 9%	630 9%
	Black or African American	330 7%	364 7%	417 7%	444 7%	526 8%
	Hispanic or Latino	2,528 51%	2,890 52%	3,074 53%	3,262 53%	3,531 53%
	Native Hawaiian or Other Pacific	7 0%	5 0%	7 0%	6 0%	10 0%
	Two or More Races	187 4%	216 4%	224 4%	251 4%	261 4%
	White	1,257 25%	1,340 24%	1,314 23%	1,345 22%	1,373 21%
	International	184 4%	207 4%	227 4%	242 4%	248 4%
	Unknown or Not Reported	41 1%	47 1%	71 1%	84 1%	89 1%
	Total	4.960 100%	5.532 100%	5.827 100%	6.190 100%	6.679 100%
University College**	American Indian or Alaska Native	6 0%	2 0%	4 0%	6 0%	8 0%

		Fa. 2020	Fa. 2021	Fa. 2022	Fa. 2023	Fa. 2024
University College**	Asian	343 6%	286 6%	242 6%	259 6%	255 5%
	Black or African American	527 9%	482 10%	369 9%	393 9%	461 9%
	Hispanic or Latino	3,414 59%	2,967 59%	2,399 60%	2,601 60%	2,968 61%
	Native Hawaiian or Other Pacific	5 0%	9 0%	7 0%	8 0%	8 0%
	Two or More Races	205 4%	180 4%	141 4%	160 4%	168 3%
	White	1,127 20%	989 20%	696 17%	765 18%	859 18%
	International	88 2%	62 1%	57 1%	58 1%	96 2%
	Unknown or Not Reported	29 1%	39 1%	66 2%	85 2%	72 1%
	Total	5,744 100%	5,016 100%	3,981 100%	4,335 100%	4,895 100%
Total		34,742 100%	34,734 100%	34,344 100%	34,864 100%	35,770 100%

\* Other Area includes students who are majoring in Honors Studies, Translational Science and students who are not degree seeking. These were combined to maintain student confidentiality.

\*\*Increase in student enrollment in University College beginning in Fall 2019 due to studies program implementation.

Current College Structure Enrollment by Course Load (Fall Semesters)

		Fa. 2020	Fa. 2021	Fa. 2022	Fa. 2023	Fa. 2024
Business	Full Time	4,059 72%	4,479 70%	5,416 72%	5,763 74%	5,731 73%
	Part Time	1,605 28%	1,928 30%	2,158 28%	2,077 26%	2,086 27%
	Total	5,664 100%	6,407 100%	7,574 100%	7,840 100%	7,817 100%
Education and Human Development	Full Time	1,327 56%	1,261 55%	1,201 55%	1,116 57%	986 55%
	Part Time	1,038 44%	1,050 45%	984 45%	838 43%	801 45%
	Total	2,365 100%	2,311 100%	2,185 100%	1,954 100%	1,787 100%
Engineering and Integrated Design	Full Time	3,175 74%	3,066 72%	2,938 71%	3,008 72%	3,076 73%
	Part Time	1,103 26%	1,175 28%	1,211 29%	1,190 28%	1,111 27%
	Total	4,278 100%	4,241 100%	4,149 100%	4,198 100%	4,187 100%
Health, Community and Policy	Full Time	5,330 78%	5,116 76%	4,871 76%	4,866 78%	4,758 77%
	Part Time	1,482 22%	1,604 24%	1,553 24%	1,384 22%	1,399 23%
	Total	6,812 100%	6,720 100%	6,424 100%	6,250 100%	6,157 100%
Liberal and Fine Arts	Full Time	3,524 76%	3,070 71%	2,734 68%	2,637 68%	2,718 67%
	Part Time	1,132 24%	1,229 29%	1,271 32%	1,267 32%	1,329 33%
	Total	4,656 100%	4,299 100%	4,005 100%	3,904 100%	4,047 100%
Other Area*	Full Time	49 19%	58 28%	46 23%	33 17%	38 19%
	Part Time	214 81%	150 72%	153 77%	160 83%	163 81%
	Total	263 100%	208 100%	199 100%	193 100%	201 100%
Sciences	Full Time	3,743 75%	3,943 71%	4,228 73%	4,684 76%	5,089 76%
	Part Time	1,217 25%	1,589 29%	1,599 27%	1,506 24%	1,590 24%
	Total	4,960 100%	5,532 100%	5,827 100%	6,190 100%	6,679 100%

		Fa. 2020	Fa. 2021	Fa. 2022	Fa. 2023	Fa. 2024
University College**	Full Time	4,126 72%	3,357 67%	2,448 61%	2,766 64%	3,117 64%
	Part Time	1,618 28%	1,659 33%	1,533 39%	1,569 36%	1,778 36%
	Total	5,744 100%	5,016 100%	3,981 100%	4,335 100%	4,895 100%
Total		34,742 100%	34,734 100%	34,344 100%	34,864 100%	35,770 100%

\* Other Area includes students who are majoring in Honors Studies, Translational Science and students who are not degree seeking. These were combined to maintain student confidentiality.

\*\*Increase in student enrollment in University College beginning in Fall 2019 due to studies program implementation.

Current College Structure Full Time Equivalent (Fall Semesters)

		Fa. 2020	Fa. 2021	Fa. 2022	Fa. 2023	Fa. 2024
Business	Undergraduate	3,547.5 80%	3,958.9 81%	4,955.5 85%	5,270.4 86%	5,283.3 86%
	Post-Bac	35.3 1%	40.8 1%	58.3 1%	47.7 1%	39.8 1%
	Masters	793.1 18%	837.6 17%	734.8 13%	748.8 12%	722.4 12%
	Doctoral	67.1 2%	66.6 1%	61.3 1%	65.1 1%	68.1 1%
	Total	4,442.9 100%	4,903.8 100%	5,809.9 100%	6,131.9 100%	6,113.6 100%
Education and Human Development	Undergraduate	930.3 57%	918.8 58%	849.5 58%	747.9 55%	617.8 51%
	Post-Bac	17.8 1%	16.5 1%	13.1 1%	12.8 1%	10.3 1%
	Masters	549.0 33%	483.3 31%	459.3 31%	448.3 33%	438.5 36%
	Doctoral	143.3 9%	160.3 10%	152.0 10%	141.6 10%	154.0 13%
	Total	1,640.4 100%	1,579.0 100%	1,473.8 100%	1,350.6 100%	1,220.6 100%
Engineering and Integrated Design	Undergraduate	2,982.3 86%	2,851.8 85%	2,771.5 86%	2,833.7 85%	2,812.3 85%
	Post-Bac	49.7 1%	37.1 1%	37.8 1%	31.8 1%	27.5 1%
	Masters	250.4 7%	272.9 8%	256.1 8%	244.2 7%	252.3 8%
	Doctoral	175.1 5%	181.9 5%	175.9 5%	209.3 6%	235.3 7%
	Total	3,457.5 100%	3,343.7 100%	3,241.3 100%	3,319.0 100%	3,327.5 100%
Health, Community and Policy	Undergraduate	5,113.3 92%	4,927.8 92%	4,699.6 93%	4,661.9 93%	4,591.6 92%
	Post-Bac	27.6 0%	21.9 0%	17.4 0%	14.7 0%	15.3 0%
	Masters	372.8 7%	341.5 6%	305.7 6%	310.8 6%	321.8 6%
	Doctoral	43.7 1%	43.4 1%	48.8 1%	47.2 1%	47.0 1%
	Total	5,557.3 100%	5,334.7 100%	5,071.5 100%	5,034.6 100%	4,975.7 100%
Liberal and Fine Arts	Undergraduate	3,535.5 94%	3,100.7 93%	2,779.7 92%	2,747.5 93%	2,853.6 93%
	Post-Bac	26.3 1%	15.4 0%	24.2 1%	17.8 1%	16.6 1%

		Fa. 2020	Fa. 2021	Fa. 2022	Fa. 2023	Fa. 2024
Liberal and Fine Arts	Masters	175.7 5%	190.2 6%	161.4 5%	145.1 5%	155.8 5%
	Doctoral	31.0 1%	40.3 1%	50.3 2%	49.3 2%	45.6 1%
	Total	3,768.4 100%	3,346.6 100%	3,015.7 100%	2,959.8 100%	3,071.5 100%
Other Area*	Undergraduate	27.7 25%	23.0 23%	25.5 31%	26.4 35%	25.3 34%
	Post-Bac	82.0 75%	75.2 77%	57.8 69%	48.4 65%	49.4 66%
	Total	109.7 100%	98.2 100%	83.3 100%	74.8 100%	74.7 100%
Sciences	Undergraduate	3,660.8 89%	3,998.7 90%	4,204.6 90%	4,625.9 91%	5,009.5 91%
	Post-Bac	44.4 1%	44.5 1%	55.8 1%	48.1 1%	34.7 1%
	Masters	191.7 5%	199.8 4%	200.2 4%	190.6 4%	186.3 3%
	Doctoral	212.2 5%	213.8 5%	210.0 4%	216.9 4%	246.8 5%
	Total	4,109.1 100%	4,456.8 100%	4,670.6 100%	5,081.5 100%	5,477.3 100%
University College**	Undergraduate	4,477.7 99%	3,773.3 99%	2,912.2 99%	3,173.7 98%	3,586.9 98%
	Post-Bac	46.8 1%	29.0 1%	18.9 1%	32.3 1%	20.3 1%
	Masters	0.0 0%	0.0 0%	7.3 0%	15.1 0%	38.8 1%
	Doctoral	3.7 0%	3.7 0%	4.4 0%	4.4 0%	1.3 0%
	Total	4,528.2 100%	3,805.9 100%	2,942.9 100%	3,225.5 100%	3,647.3 100%
Total		27,613.6 100%	26,868.7 100%	26,308.9 100%	27,177.7 100%	27,908.3 100%

Current College Structure Enrollment by Level (Fall Semesters)

		Fa. 2020	Fa. 2021	Fa. 2022	Fa. 2023	Fa. 2024
Business	Undergraduate	4,320 76%	4,920 77%	6,163 81%	6,481 83%	6,503 83%
	Post-Bac	56 1%	60 1%	81 1%	65 1%	59 1%
	Masters	1,208 21%	1,342 21%	1,252 17%	1,216 16%	1,169 15%
	Doctoral	80 1%	85 1%	78 1%	78 1%	86 1%
	Total	5,664 100%	6,407 100%	7,574 100%	7,840 100%	7,817 100%
Education and Human Development	Undergraduate	1,157 49%	1,144 50%	1,055 48%	910 47%	745 42%
	Post-Bac	43 2%	46 2%	42 2%	34 2%	33 2%
	Masters	938 40%	855 37%	827 38%	774 40%	761 43%
	Doctoral	227 10%	266 12%	261 12%	236 12%	248 14%
	Total	2,365 100%	2,311 100%	2,185 100%	1,954 100%	1,787 100%
Engineering and Integrated Design	Undergraduate	3,603 84%	3,526 83%	3,448 83%	3,502 83%	3,449 82%
	Post-Bac	71 2%	54 1%	51 1%	40 1%	38 1%
	Masters	369 9%	431 10%	425 10%	407 10%	423 10%
	Doctoral	235 5%	230 5%	225 5%	249 6%	277 7%
	Total	4,278 100%	4,241 100%	4,149 100%	4,198 100%	4,187 100%
Health, Community and Policy	Undergraduate	6,105 90%	6,062 90%	5,843 91%	5,674 91%	5,566 90%
	Post-Bac	37 1%	34 1%	25 0%	19 0%	24 0%
	Masters	607 9%	559 8%	494 8%	494 8%	509 8%
	Doctoral	63 1%	65 1%	62 1%	63 1%	58 1%
	Total	6,812 100%	6,720 100%	6,424 100%	6,250 100%	6,157 100%
Liberal and Fine Arts	Undergraduate	4,245 91%	3,868 90%	3,593 90%	3,538 91%	3,661 90%
	Post-Bac	36 1%	27 1%	33 1%	29 1%	28 1%



		Fa. 2020	Fa. 2021	Fa. 2022	Fa. 2023	Fa. 2024
<b>Liberal and Fine Arts</b>	<b>Masters</b>	312 7%	336 8%	300 7%	261 7%	283 7%
	<b>Doctoral</b>	63 1%	68 2%	79 2%	76 2%	75 2%
	<b>Total</b>	4,656 100%	4,299 100%	4,005 100%	3,904 100%	4,047 100%
<b>Other Area*</b>	<b>Undergraduate</b>	112 43%	91 44%	95 48%	98 51%	109 54%
	<b>Post-Bac</b>	151 57%	117 56%	104 52%	95 49%	92 46%
	<b>Total</b>	263 100%	208 100%	199 100%	193 100%	201 100%
<b>Sciences</b>	<b>Undergraduate</b>	4,348 88%	4,893 88%	5,196 89%	5,580 90%	6,070 91%
	<b>Post-Bac</b>	62 1%	61 1%	70 1%	61 1%	44 1%
	<b>Masters</b>	326 7%	344 6%	336 6%	314 5%	298 4%
	<b>Doctoral</b>	224 5%	234 4%	225 4%	235 4%	267 4%
	<b>Total</b>	4,960 100%	5,532 100%	5,827 100%	6,190 100%	6,679 100%
<b>University College**</b>	<b>Undergraduate</b>	5,669 99%	4,962 99%	3,933 99%	4,237 98%	4,786 98%
	<b>Post-Bac</b>	68 1%	46 1%	32 1%	68 2%	50 1%
	<b>Masters</b>	0 0%	0 0%	10 0%	24 1%	58 1%
	<b>Doctoral</b>	7 0%	8 0%	6 0%	6 0%	1 0%
	<b>Total</b>	5,744 100%	5,016 100%	3,981 100%	4,335 100%	4,895 100%
<b>Total</b>		34,742 100%	34,734 100%	34,344 100%	34,864 100%	35,770 100%

\* Other Area includes students who are majoring in Honors Studies, Translational Science and students who are not degree seeking. These were combined to maintain student confidentiality.

\*\*Increase in student enrollment in University College in Fall 2019 due to studies program implementation.