

The University of Texas at San Antonio Campus Master Plan – Main Campus

Community Meetings | January 30, 2019

Introduction | Agenda

PRESENTATION (6:00-6:20)

- **Welcome:** Linda Ximenes, *Ximenes & Associates*
- **Introduction:** Dr. Kimberly Espy, *UTSA*
- **Draft Planning Principles:** Larry Speck, *Page*
- **Open House Topics:** Ryan Losch, *Page*
 - Transportation
 - Housing
 - Land Use & Open Space
 - Partnership Development

OPEN HOUSE (6:20-7:30)

UTSA[®]

The University of Texas
at San Antonio[™]

Campus Master Plan Community Forums

Dr. Kimberly Andrews Espy
Provost and Vice President for Academic Affairs
January 30 & 31, 2019





UTSA[®]

Strategic Implementation Plan

What we will look like in ten years

4+

thriving campuses, with more under consideration

>>45,000

students

>2,000

faculty

>>85%

first-year retention rate

6-8

areas of scholarly distinction

R1

Carnegie classification, with access to the National Research University Fund

>\$300M

in annual research expenditures

>>\$400M

endowment

>>35%

four-year graduation rate

>>\$1B

annual budget

>300

endowed chairs/professorships

>15

faculty in the national academies

>25

faculty receiving prestigious awards annually

>>60%

six-year graduation rate

>3 million ft²

new construction across campuses

STUDENT SUCCESS EXEMPLAR

like Georgia State, FIU, UCF

AAU-EQUIVALENT UNIVERSITY

like ASU, UC Santa Cruz, UC Riverside (UC Irvine)

UNIVERSITY OF CONTINUOUS IMPROVEMENT

like ASU, George Mason, Georgia State

Destinations

UTSA WILL BE

1

A model for
student success

2

A great public
research university

3

An exemplar for **strategic
growth and innovative
excellence**



1

A model for student success

UTSA is a next generation Hispanic-thriving, multicultural institution where students from all backgrounds can excel. As a prosperity engine graduating world-engaged civic leaders of tomorrow, UTSA provides students with exceptional opportunities for experiential learning and classroom to career education.



2

A great public research university

With a focus on driving San Antonio's knowledge economy, UTSA is an urban-serving university of the future living out the notion that great universities need great cities, and great cities need great universities. As a discovery enterprise on the fast track to attaining National Research University Fund eligibility and an R1 designation by the Carnegie Commission, UTSA is positioned to align with members of the prestigious Association of American Universities.



3

An exemplar for strategic growth and innovative excellence

UTSA will realize its full potential as a university by growing to become a more comprehensive institution. By focusing on nimbleness and continuous improvement, UTSA integrates innovative approaches and best practices to ensure goals align with operational processes. With a reputation as a great place to work, UTSA actively cultivates the excellence of its people.

Campus Master Plan

Guiding the development
of UTSA's campuses over
the next decade



ACREAGE

UTSA Campuses

- 758 total acres
- 573 developable acres



Main Campus
600 acres | 495.2 developable acres



Downtown Campus
18.3 acres | 8.3 developable acres



Park West Campus
125 acres | 70 developable acres



Institute of Texan Cultures
14.6 acres | 0 developable acres



UTSA®

Enhancing the Main Campus

Roadrunner Village

A vibrant new neighborhood featuring housing, dining and retail space that enhances the campus experience for the university community.



Freshman Residence Hall

Designed with student success in mind, UTSA's newest residence hall will house 360 freshmen



Residential Honors College

A new residence hall for the university's top students, bringing UTSA's Honors College to new levels of national prominence



Roadrunner Athletics Center of Excellence

A comprehensive multipurpose sports center to address student-athlete academic success, safety, performance and wellness



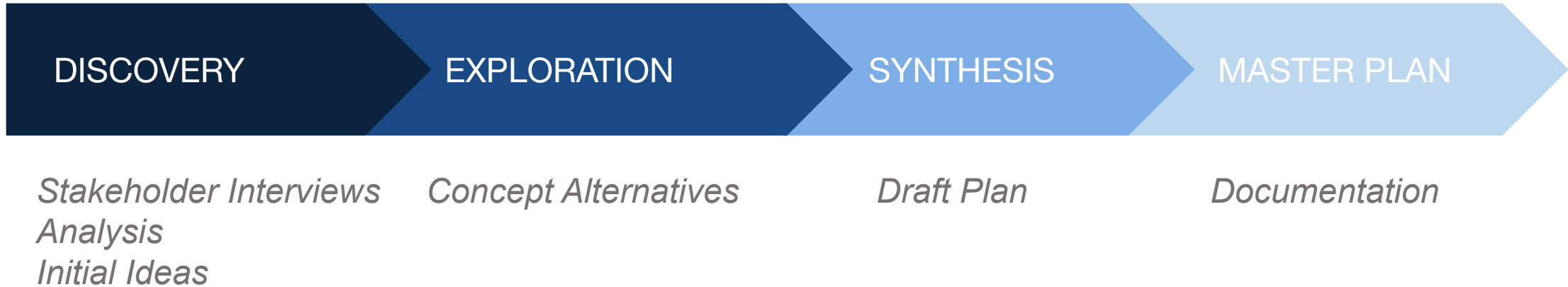
UTSA[®]

The University of Texas
at San Antonio[™]



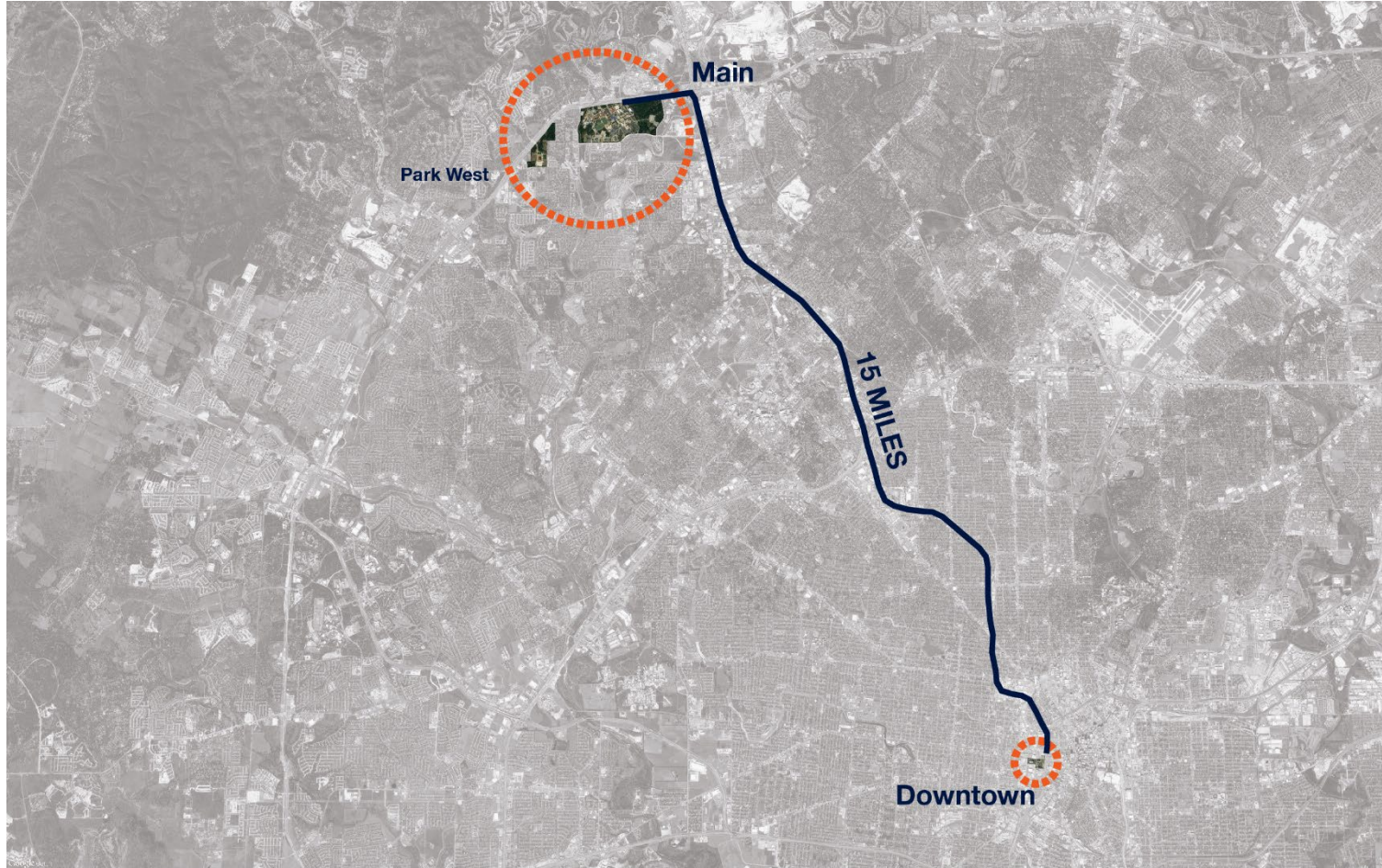
Thank you!

Introduction | Master Plan Components



Introduction | UTSA Campuses

The distance between Main and Downtown campuses is just over 15 miles via I-10.



- Typically 20-40 minutes to drive between campuses along I-10
- VIA routes 93 and 94 run about every half hour and take 30-40 minutes
- VIA route 100 runs about every 10 minutes during peak hours
- VIA 97 runs downtown along Navarro

Principle #1

Support a robust research enterprise through interdisciplinary collaboration and partnership opportunities

Principio #1

Apoyar una empresa de investigación sólida a través de la colaboración interdisciplinaria y las oportunidades de asociación

Principle #2

Increase access to open space and celebrate the campus natural context

Principio #2

Aumentar el acceso a los espacios abiertos y celebrar el contexto natural del campus

Principle #3

Promote a pedestrian-oriented and compact campus core

Principio #3

Promover un centro de campus compacto y orientado a peatones

Principle #4

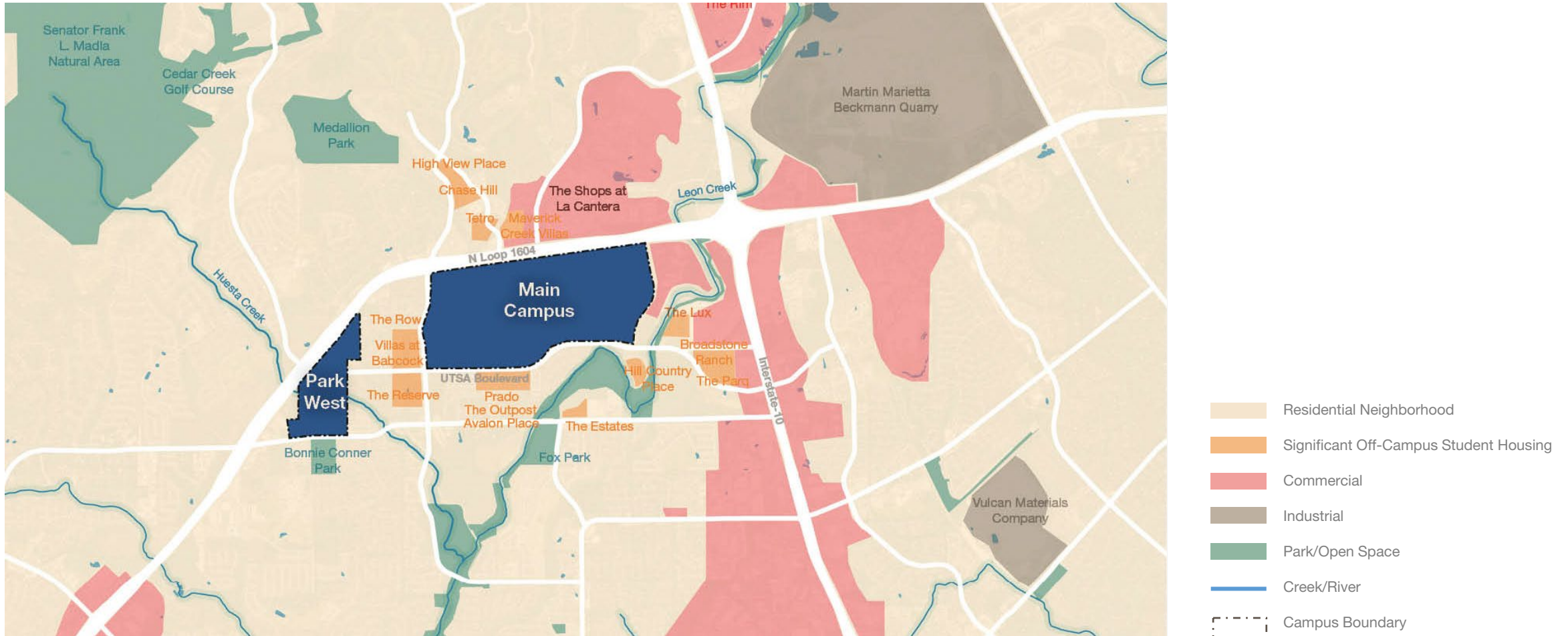
Encourage mixed-use and improved connections between uses.

Principio #4

Fomentar uso mixto y la mejora de las conexiones entre usos

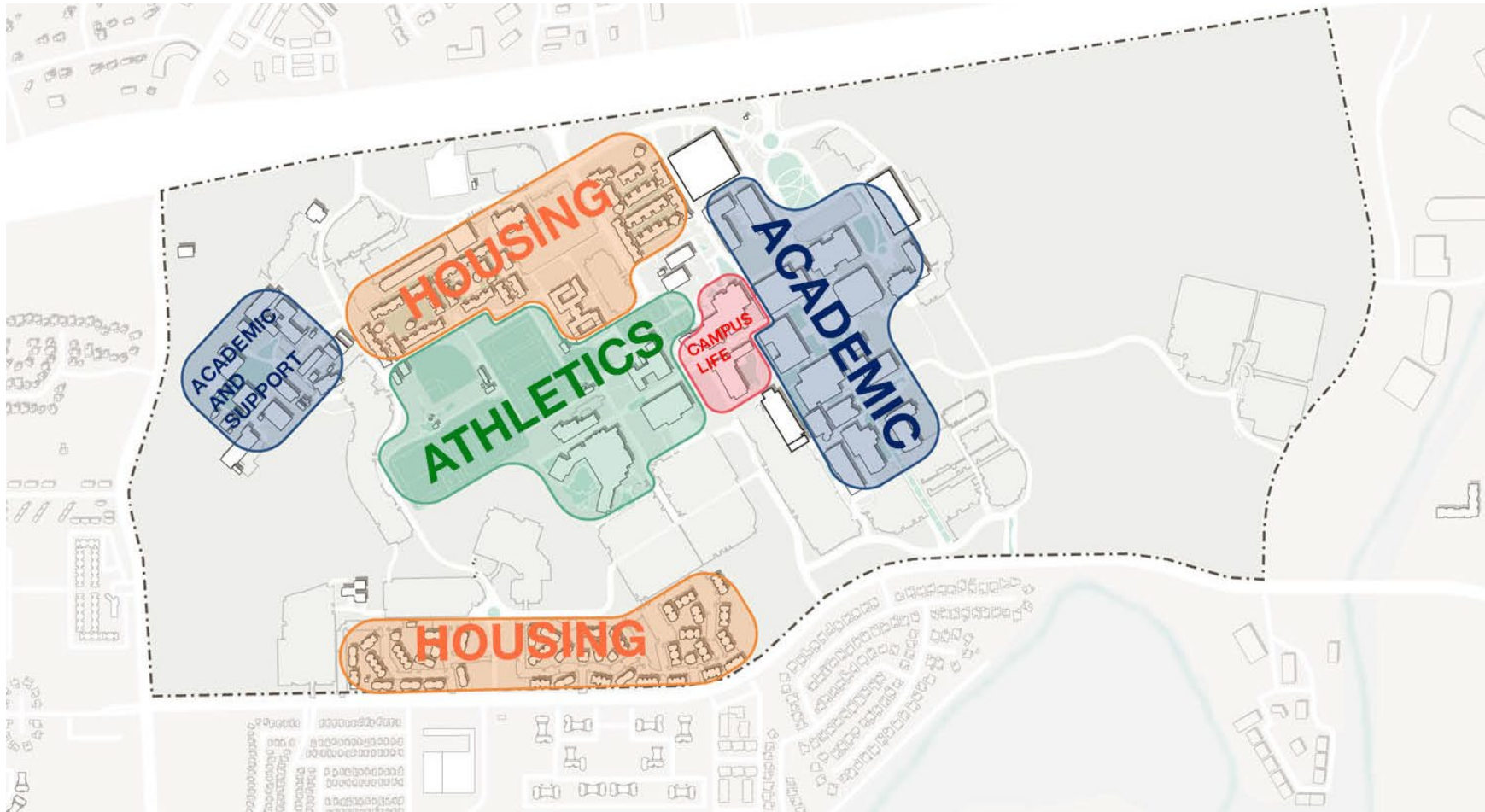
Main Campus | Context

Nearby commercial corridors serve the region but aren't easily accessible to UTSA. Thousands of students live nearby in housing developments.



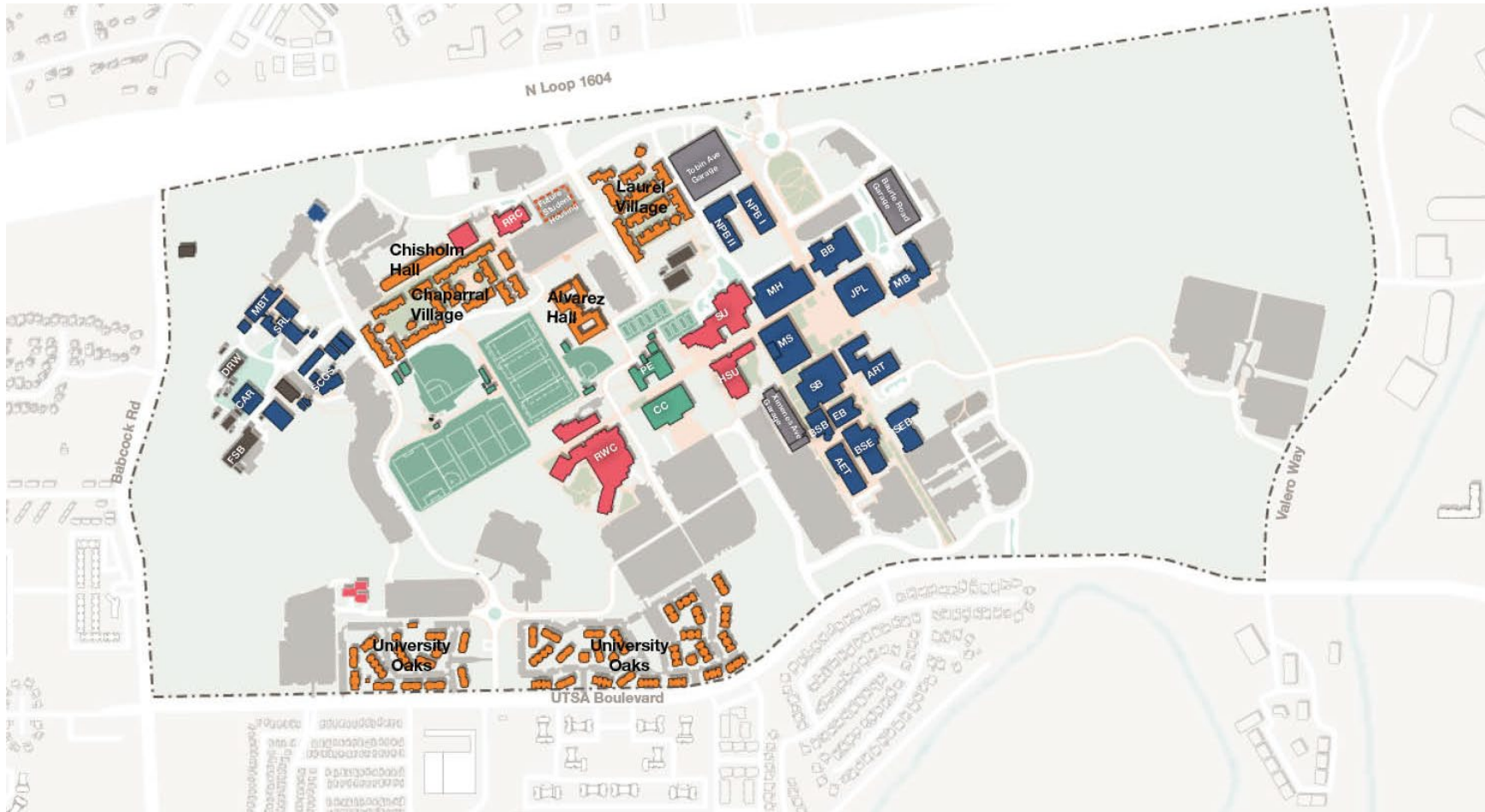
Main Campus | Existing Districts

Current campus buildings are organized into clear districts.

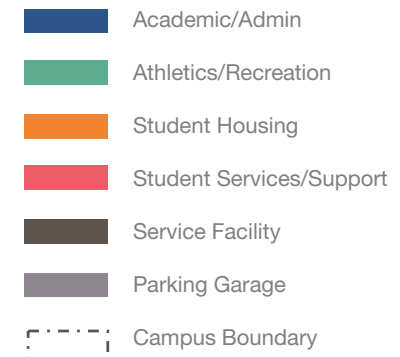


Main Campus | Building Use

Defined academic core with auxiliary uses along paseos, surrounded by student neighborhoods at the campus periphery

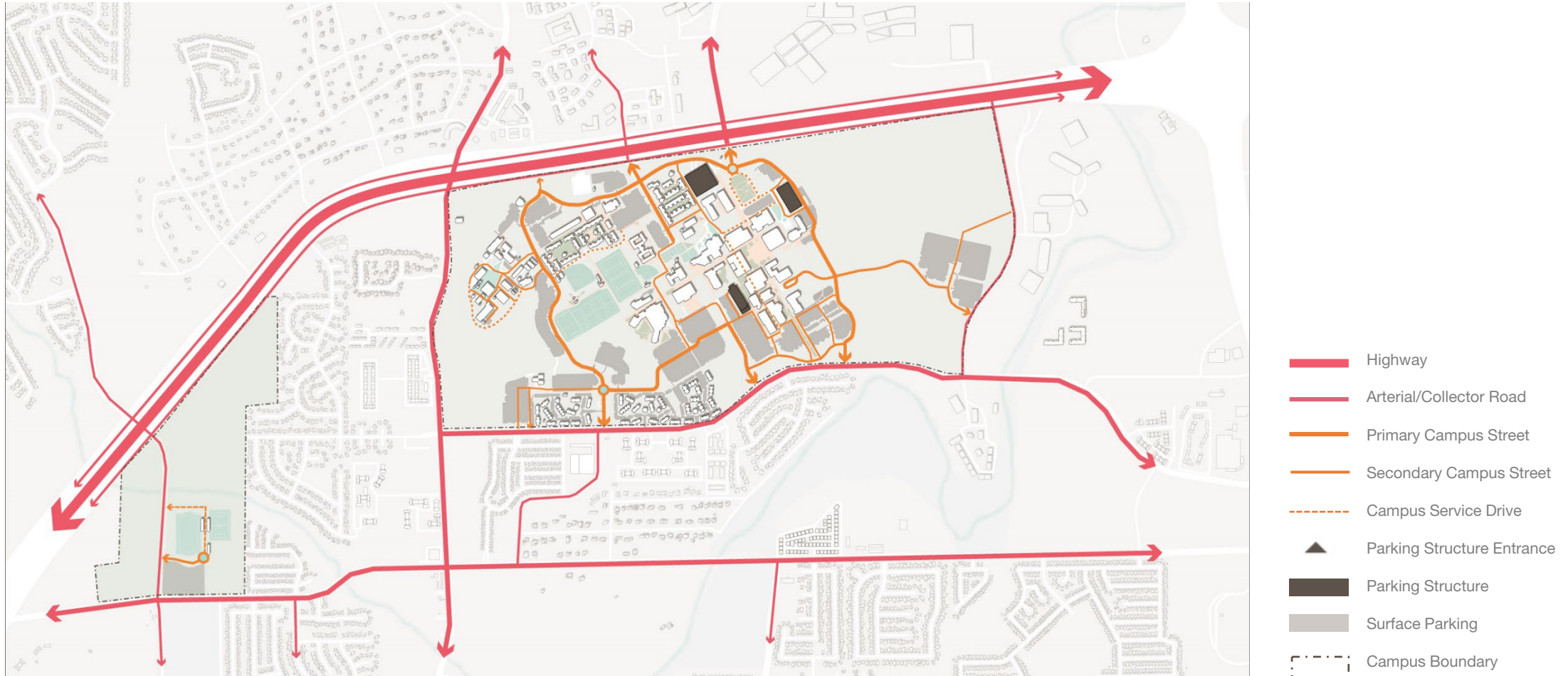


- Approx. 3.9M GSF of existing non-residential space on campus
- About 4,110 beds, including University Oaks and Chisholm Hall



Main Campus | Street Network

Internal campus circulation is not a true loop road and cuts through parking areas and in between buildings.



Main Campus | Transit and Shuttle Network

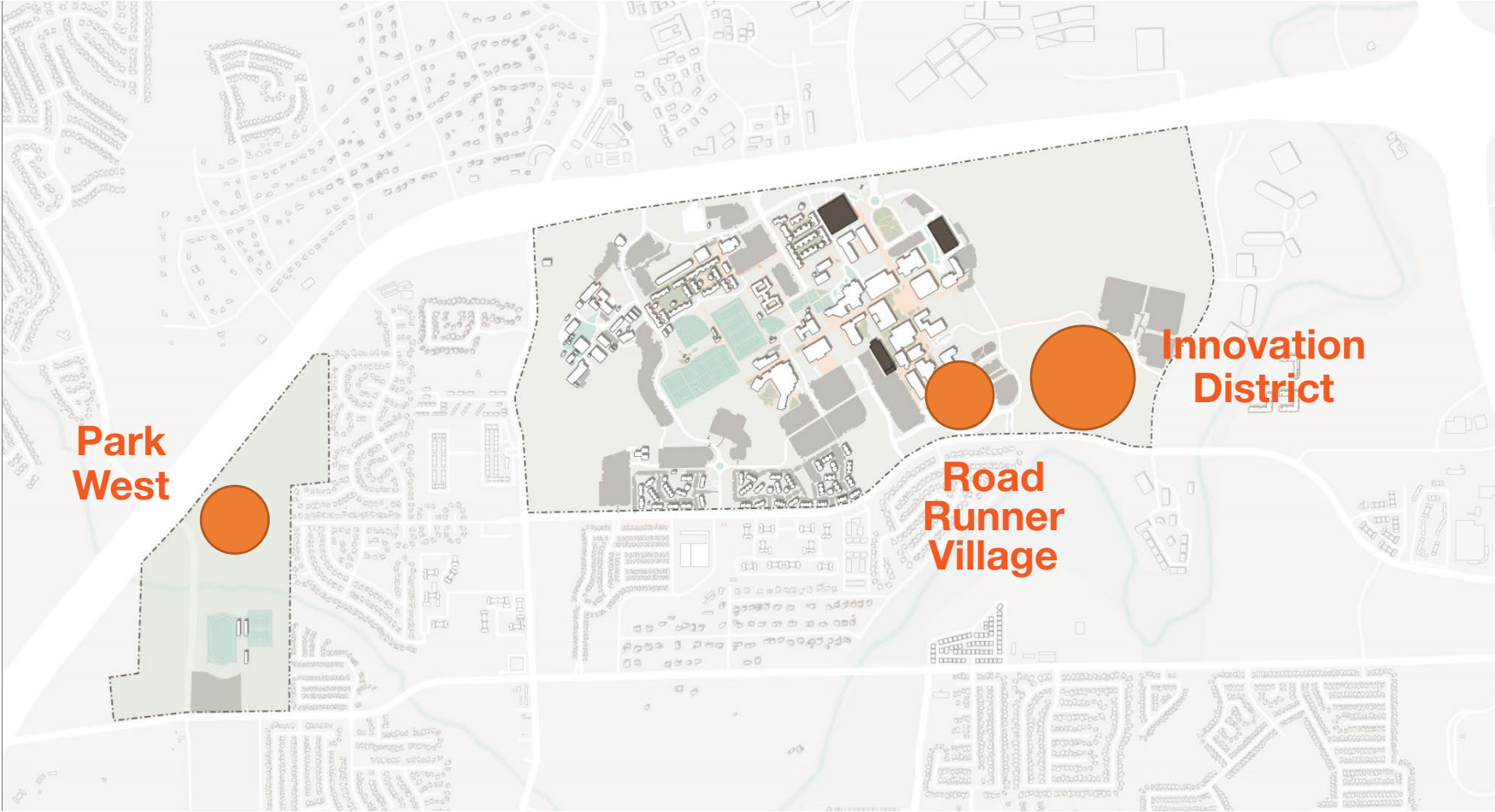
Runner shuttles primarily serve surrounding student housing while VIA provides service downtown.





- 93, 94, and 101 bus lines go to Downtown Campus
- Runner shuttle 43 is an internal campus shuttle
- Runner shuttles 12, 13, 14, 20, and 22 serve student housing complexes.

- UTSA Runner Shuttle
- VIA Frequent Bus Line
- VIA Local Bus Service
- 🚌 VIA Park & Ride
- - - Campus Boundary

Main Campus | Partnerships Areas



-  Potential Investment Areas
-  Campus Boundary

Opportunities for Additional Information and Feedback

MASTER PLAN WEBSITE

- <https://www.utsa.edu/masterplan>

WRITE YOUR FEEDBACK OR IDEAS TO:

MASTER PLAN EMAIL

- masterplan@utsa.edu

MASTER PLAN TEXT NUMBER

- 830-339-2252

