

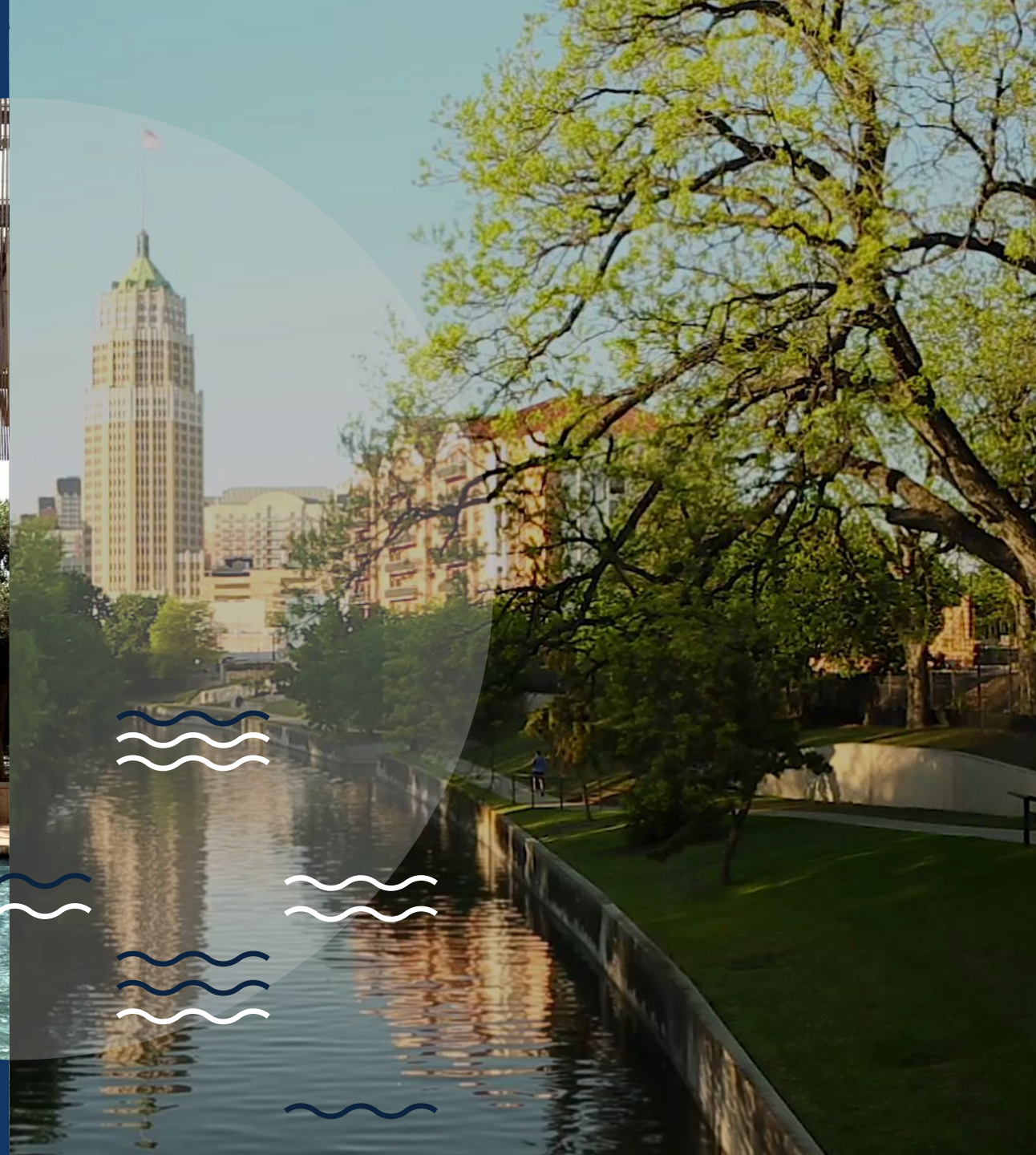
UTSA[®]

The University of Texas
at San Antonio[™]

Campus Conversation 2.0

Office of External Relations

Dr. Taylor Eighmy
August 3, 2018





UTSA[®]

Recent Accomplishments

New Leadership

Upcoming for Fall 2018

Vice President for
Inclusive Excellence

Vice President for Information
Management and Technology

Vice President for Business Affairs



Kimberly Andrews Espy

Provost and Vice President
for Academic Affairs



Mary Larson Diaz

Chief of Staff
Office of the President



Rhonda Gonzales

Vice President for
Student Success



Lisa Blazer

Vice President for
Strategic Enrollment



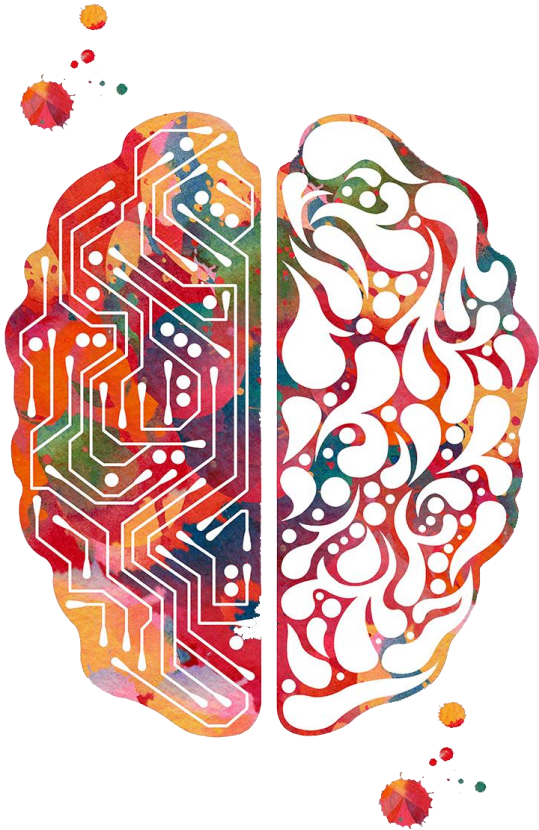
Lisa Campos

Vice President for
Intercollegiate Athletics
and Athletics Director



Brain Health

Cluster Hires FY2017



Dr. Jenny Hsieh

Professor, Semmes Chair
in Neurobiology and
Director, Brain Health
Initiative

*Previously at UT
Southwestern Medical
Center at Dallas*



Dr. Hyoung-gon Lee

Associate Professor &
John H. Doran
Distinguished Professor in
Peripheral Neuropathy

*Previously at Case
Western Reserve
University*



**Dr. Lindsey
Macpherson**

Assistant Professor of
biology specializing in
sensory neuroscience

*Previously at
Columbia University*



Dr. Asif Maroof

Assistant Professor of
biology specializing in
neurological disease

*Previously at
Harvard University*



Dr. Edward Golob

Professor and PI of UTSA
Cognitive Neuroscience
Lab

*Previously at
Tulane University*

Cybersecurity

Cluster Hires FY2017



Dr. Peyman Najafirad

Associate Professor of
Information Systems and
Cyber Security

Previously at Rackspace



Dr. David Dampier

Interim Chair and
Professor of Information
Systems and Cyber
Security

*Previously at Mississippi
State University*



Dr. Bradley Thayer

Professor of Political
Science and International
Cybersecurity

*Previously at the
University of Minnesota
Duluth*



Dr. Murtuza Jadliwala

Assistant Professor of
Computer Science

*Previously at
Wichita State University*



Dr. Zhan Qin

Assistant Professor of
Electrical & Computer
Engineering

*Previously at
University at Buffalo*



Dr. Guenevere Qian Chen

Assistant Professor of
Electrical & Computer
Engineering

*Previously at Savannah
State University*

Analytics & Data Science

Cluster Hires FY2018



Dr. Taposh Banerjee

Department of
Electrical and
Computer
Engineering, COE

*Previously at
Harvard University*



Dr. Yeonjoo Park

Department of
Management
Science and
Statistics, COB

*Previously at Univ.
of Illinois at Urbana-
Champaign*



Dr. Wenbo Wu

Department of
Management
Science and
Statistics, COB

*Previously at
University of Oregon*



Dr. Arkajyoti Roy

Department of
Management
Science and
Statistics, COB

*Previously at
Bowling Green
State University*



Dr. Anthony Rios

Department of
Information Systems
and Cyber Security,
COB

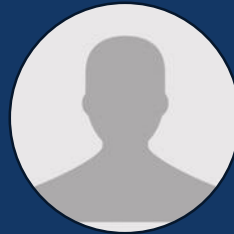
*Previously at the
University of
Kentucky*



**Dr. Miltiadis
Alamaniotis**

Department of
Electrical and
Computer
Engineering, COE

*Previously at
Purdue University*



Dr. Dian Wang

Department of
Marketing, COB

*Previously at Texas
A&M University*



Dr. Ying Huang

Department of
Demography, COPP

*Previously at
University of
Albany-SUNY*



**Dr. Marcus John
Hamilton**

Department of
Anthropology,
COLFA

*Previously at
University of New
Mexico*



Dr. Jeff Howard

Department of
Kinesiology, Health
and Nutrition,
COEHD

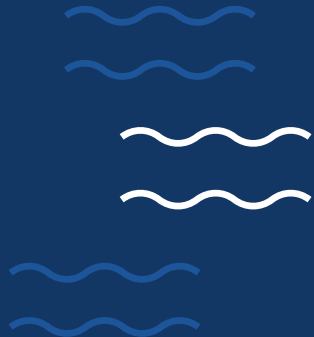
*Previously at
Fort Sam Houston*



Dr. Kamal Al Nasr

Department of
Computer Science,
COS

*Previously at
Tennessee State
University*



REPLACE IMAGE

Incentivized Resource Management

New budget model to launch September 1st



Strategic Enrollment

Targeted growth

31,000

>45,000

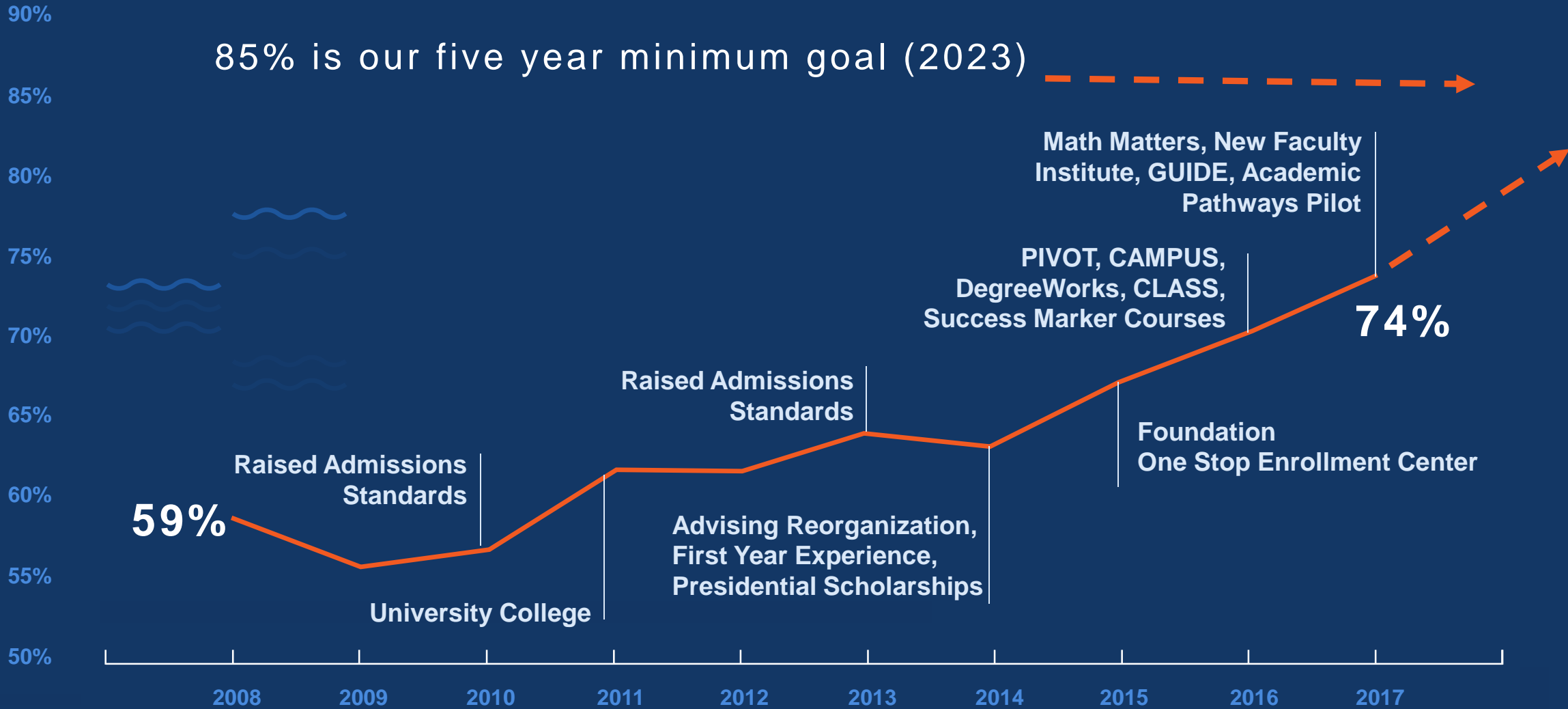


2018

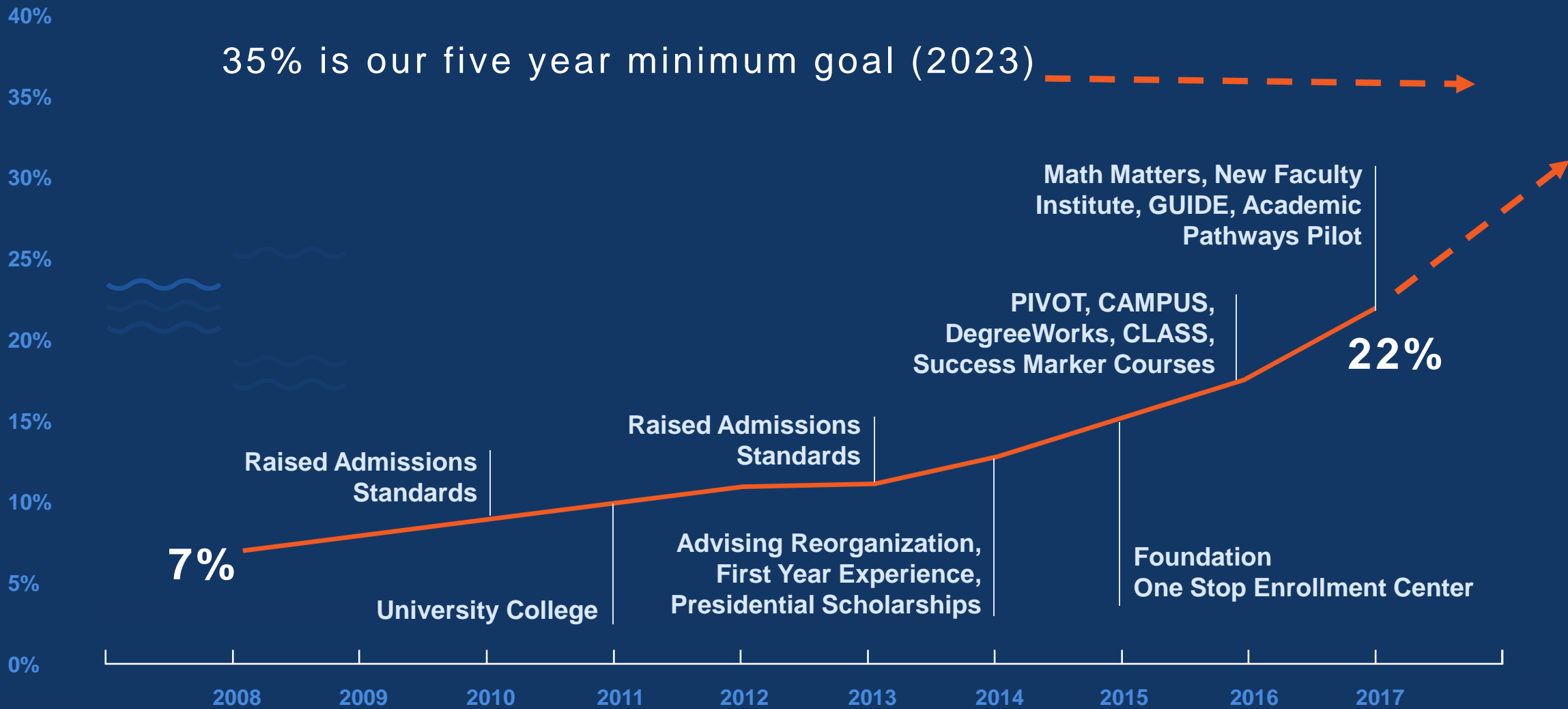


2028

First-Year Retention

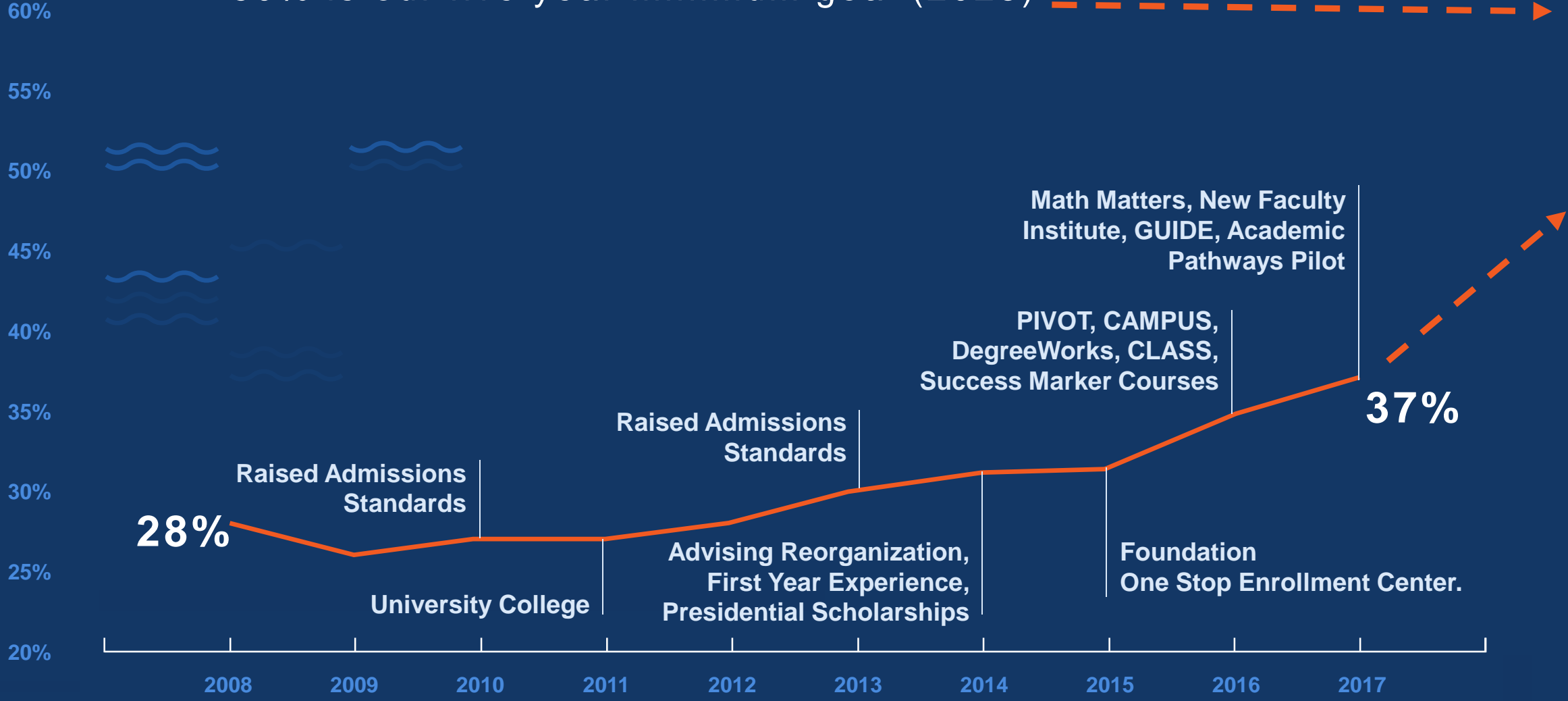


Four-Year Graduation Rates



Six-Year Graduation Rates

60% is our five year minimum goal (2023)



Math Matters, New Faculty Institute, GUIDE, Academic Pathways Pilot

PIVOT, CAMPUS, DegreeWorks, CLASS, Success Marker Courses

Raised Admissions Standards

Raised Admissions Standards

University College

Foundation One Stop Enrollment Center.

28%

37%

Weighted Semester Credit Hours for Summer 2017 Census and Summer 2018 as of 08/01/2018

		Summer 2017	Summer 2018	% Change	Indicator
UTSA Overall	Total	147,267	161,868	9.9%	▲
	Lower Division	33,575	36,774	9.5%	▲
	Upper Division	59,753	68,273	14.3%	▲
	Masters Division	33,286	35,288	6%	▲
	Doctoral	20,654	21,533	4.3%	—
Architecture, Construction and Planning	Total	2,554	3,003	17.6%	▲
	Lower Division	0	19	-	—
	Upper Division	1,272	1,873	47.2%	▲
	Masters Division	1,282	1,111	-13.3%	▼
	Doctoral	0	0	-	—
Business	Total	31,586	37,132	17.6%	▲
	Lower Division	4,717	5,063	7.3%	▲
	Upper Division	15,480	19,116	23.5%	▲
	Masters Division	7,354	8,784	19.4%	▲
	Doctoral	4,036	4,169	3.3%	—
Education & Human Development	Total	32,459	38,580	18.9%	▲
	Lower Division	1,546	1,705	10.3%	▲
	Upper Division	12,080	15,484	28.2%	▲
	Masters Division	14,304	15,961	11.6%	▲
	Doctoral	4,529	5,429	19.9%	▲
Engineering	Total	13,602	15,695	15.4%	▲
	Lower Division	2,355	2,436	3.5%	—
	Upper Division	6,656	7,425	11.6%	▲
	Masters Division	1,419	1,100	-22.5%	▼

Legend

▲	>= 10%
▲	5-5.99%
—	0-4.99%
▼	< 0%

[Report Guide](#)[Course Inventory](#)

Weighted Student Credit Hour

Online Dashboard

WSCH Task Force





\$68.1 Million in Research Expenditures

**An increase of 19.9%
FY16 to FY17**





Major Research Awards

\$7.7 Million / Research Initiative for Scientific Enhancement (RISE)

\$5 Million / Center for Security & Privacy Enhanced Cloud Computing

\$3.6 Million / UT System Quantum Leaps Student Success Initiatives

Presidential Initiative

Campus Master Plan

Task Force

Creating a framework for the development of UTSA over the next decade



Emerging Partnership

Research & Development Consortium



UT Health
San Antonio



TEXAS BIOMEDICAL
RESEARCH INSTITUTE

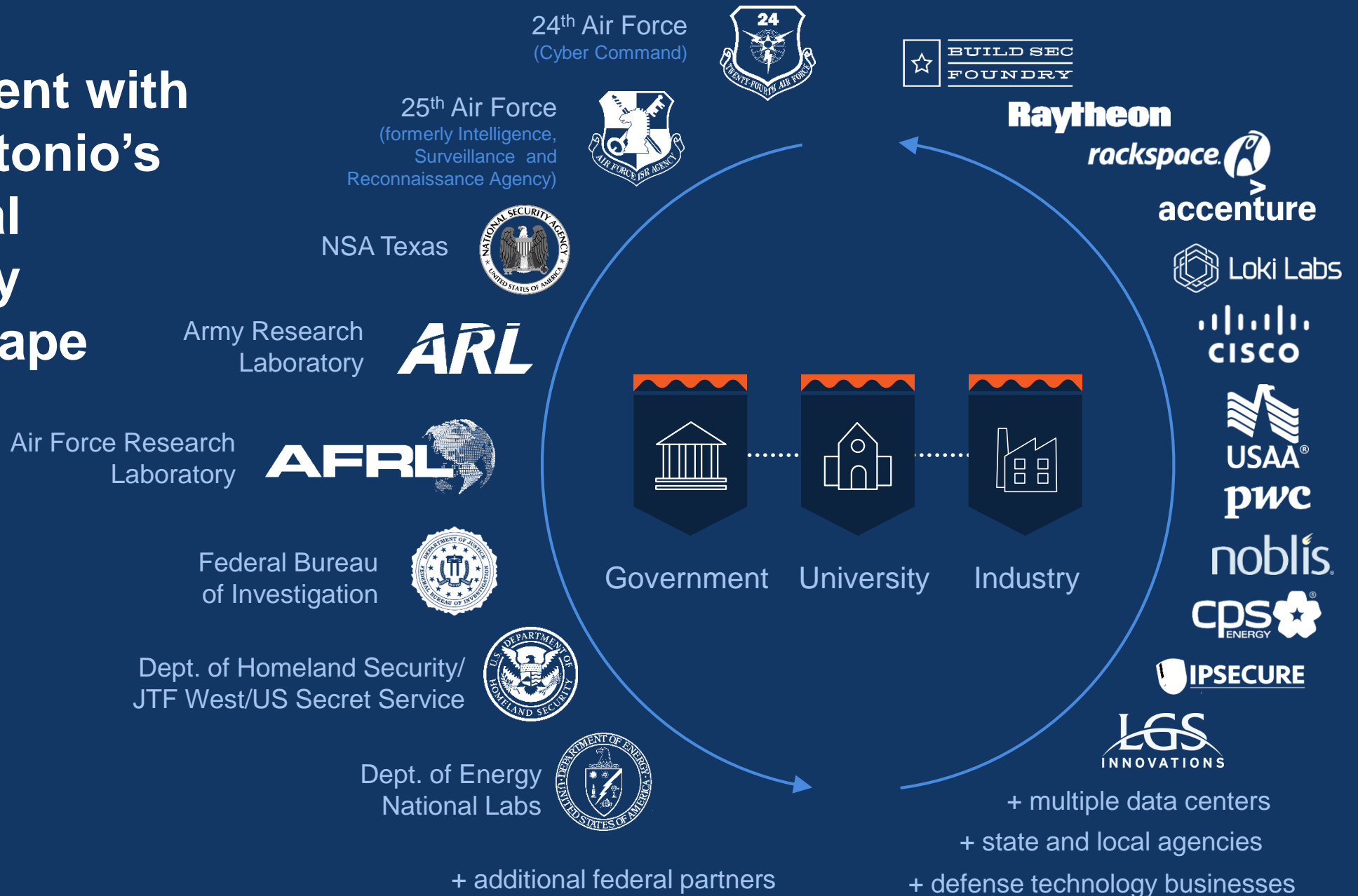


SOUTHWEST RESEARCH INSTITUTE



Brooke Army Medical Center &
San Antonio Military Medical Center

Alignment with San Antonio's National Security Landscape



National Security Collaboration Center

Secured new federal and industry partners



UTSA IS ACTIVELY
PURSUING ADDITIONAL
INDUSTRY PARTNERSHIPS

10 Aspirant Peer Models of Excellence



UC SANTA CRUZ



Carnegie RI
Institutions

UMBC



Vision
Statements

UTSA
will be...



A discovery enterprise with the nation's highest research classifications

ASU, UC Santa Cruz, UC Riverside, UC Irvine



A student success exemplar

Georgia State, FIU, UCF



Growing to serve more students and reach our full potential as a university

ASU, UMBC, George Mason, Portland State



An urban engaged exemplar

ASU, FIU, UCF



A Hispanic-thriving institution

UC Irvine, UC Santa Cruz, UC Riverside, FIU



A university of continuous improvement

ASU, George Mason, Georgia State

What Will UTSA Look Like in 10 Years?



4+

thriving campuses, with more under consideration

>45,000

students

>2,000

faculty

R1

Carnegie classification, with access to the National Research University Fund

>\$300M

in annual research expenditures

>\$500M

endowment

>300

endowed chairs/professorships

>15

faculty in the national academies

>25

faculty receiving prestigious awards annually

>>85%

first-year retention rate

>>35%

four-year graduation rate

>>60%

six-year graduation rate

6-8

areas of scholarly distinction

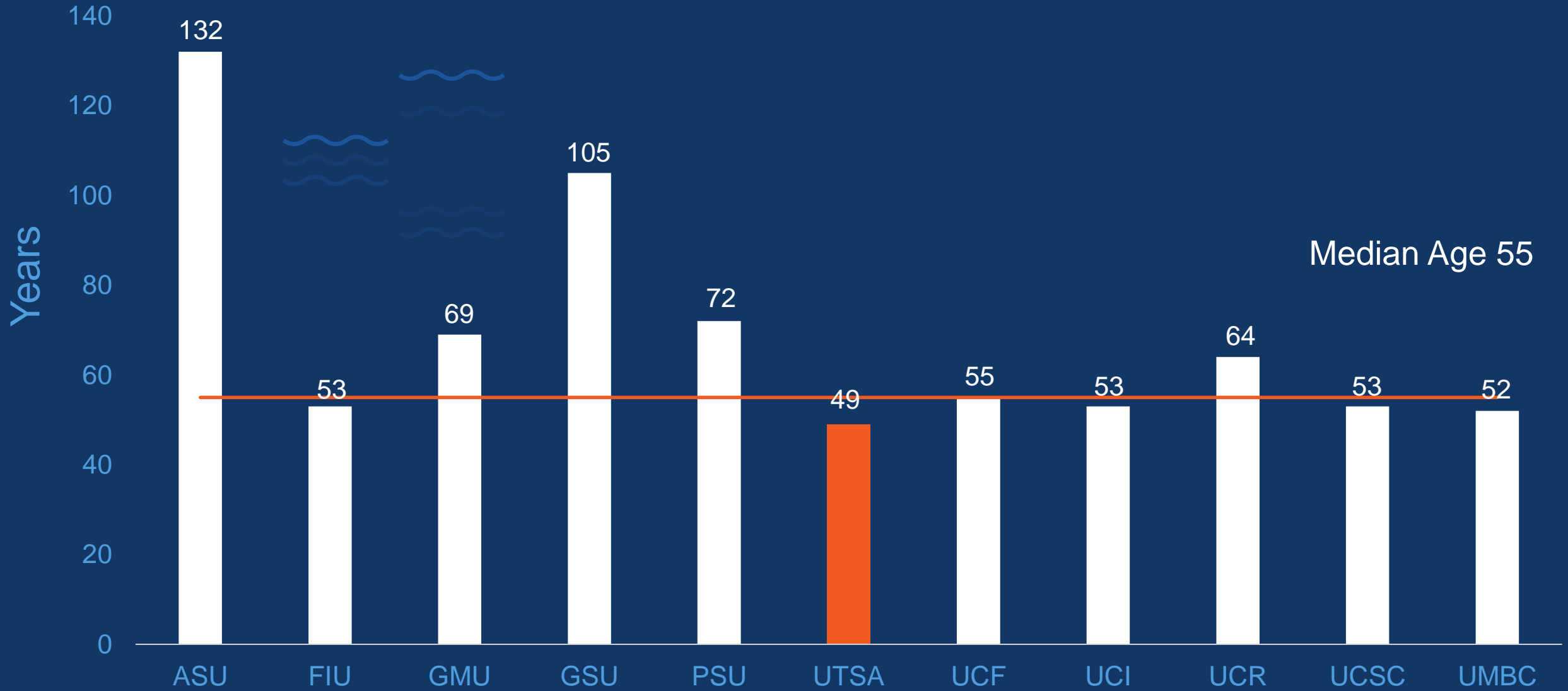
>50%

of students have some form of experiential learning

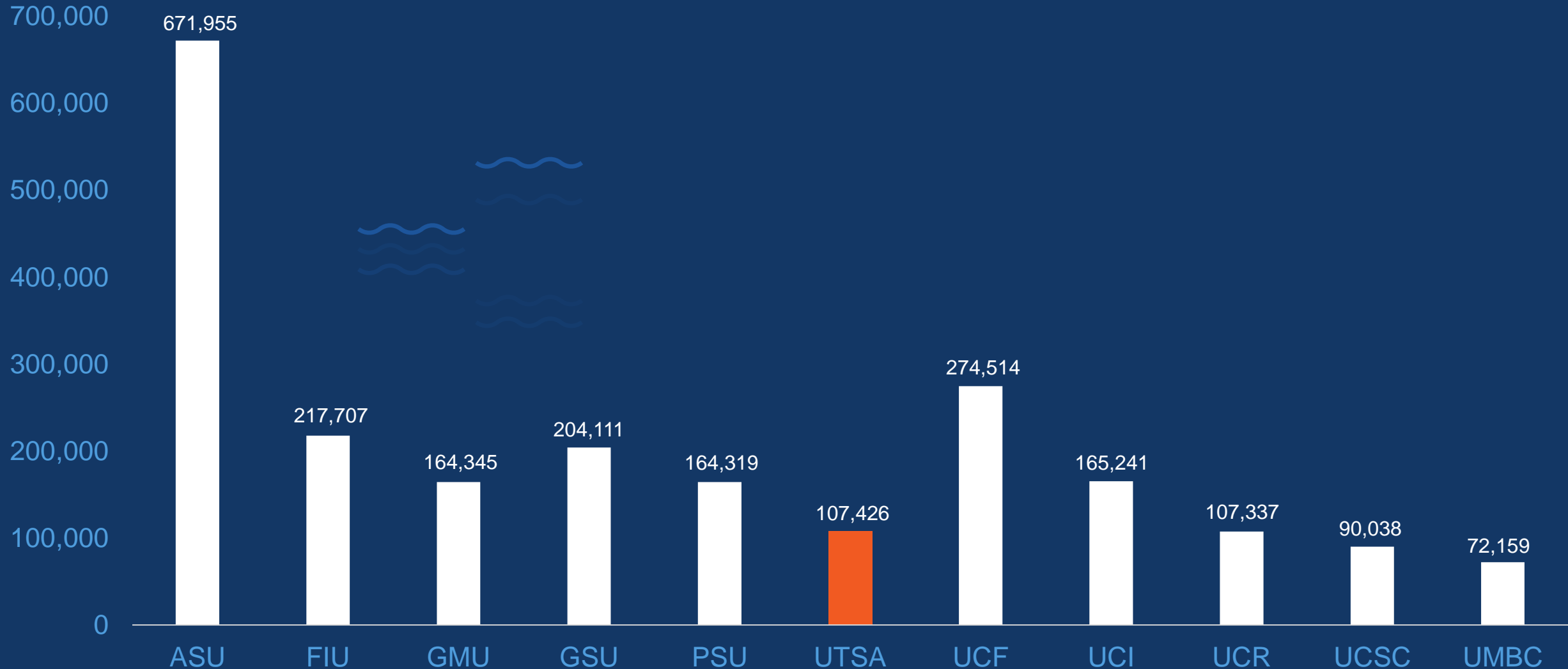
>3 million ft²

new construction across campuses

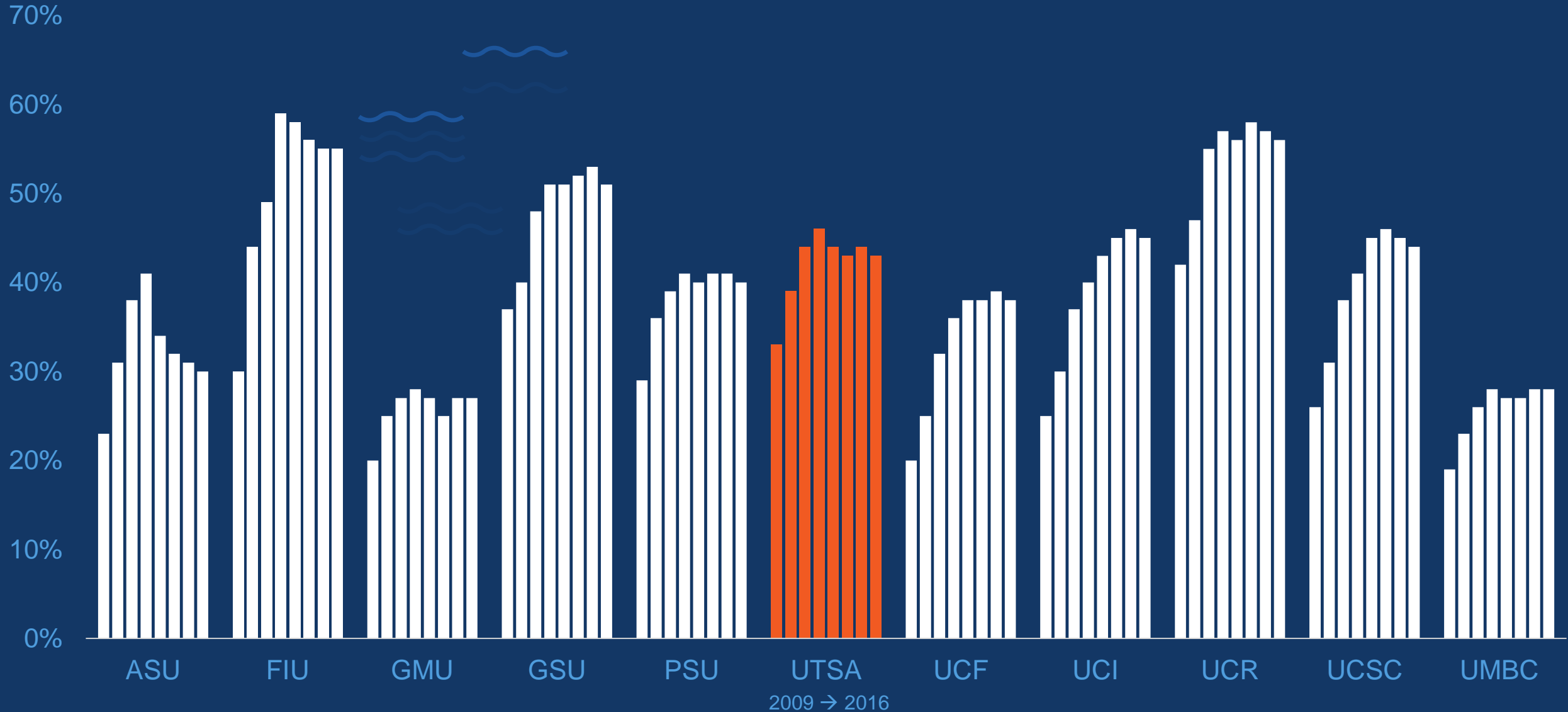
Age of University as of 2018



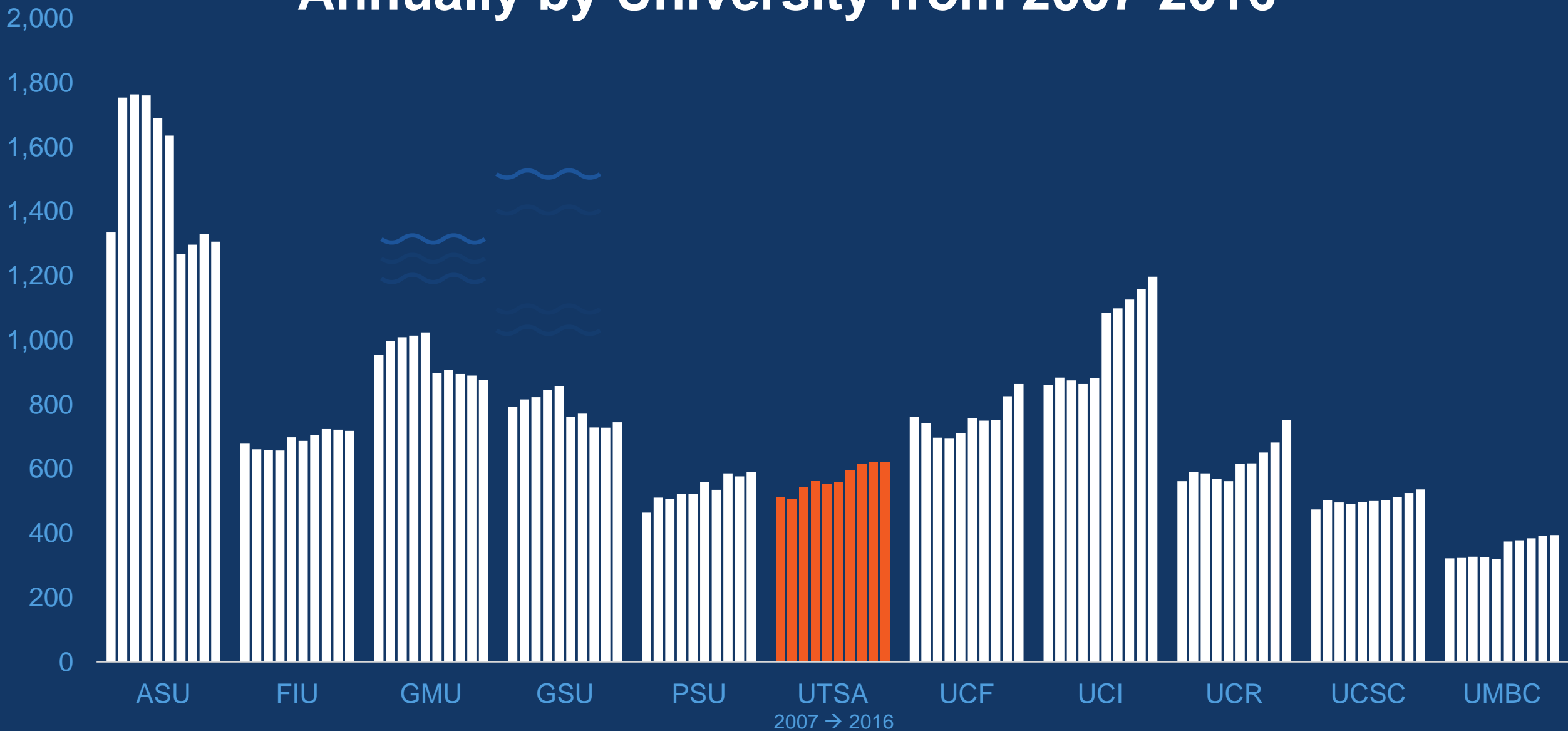
Total Number of Alumni by University as of 2018



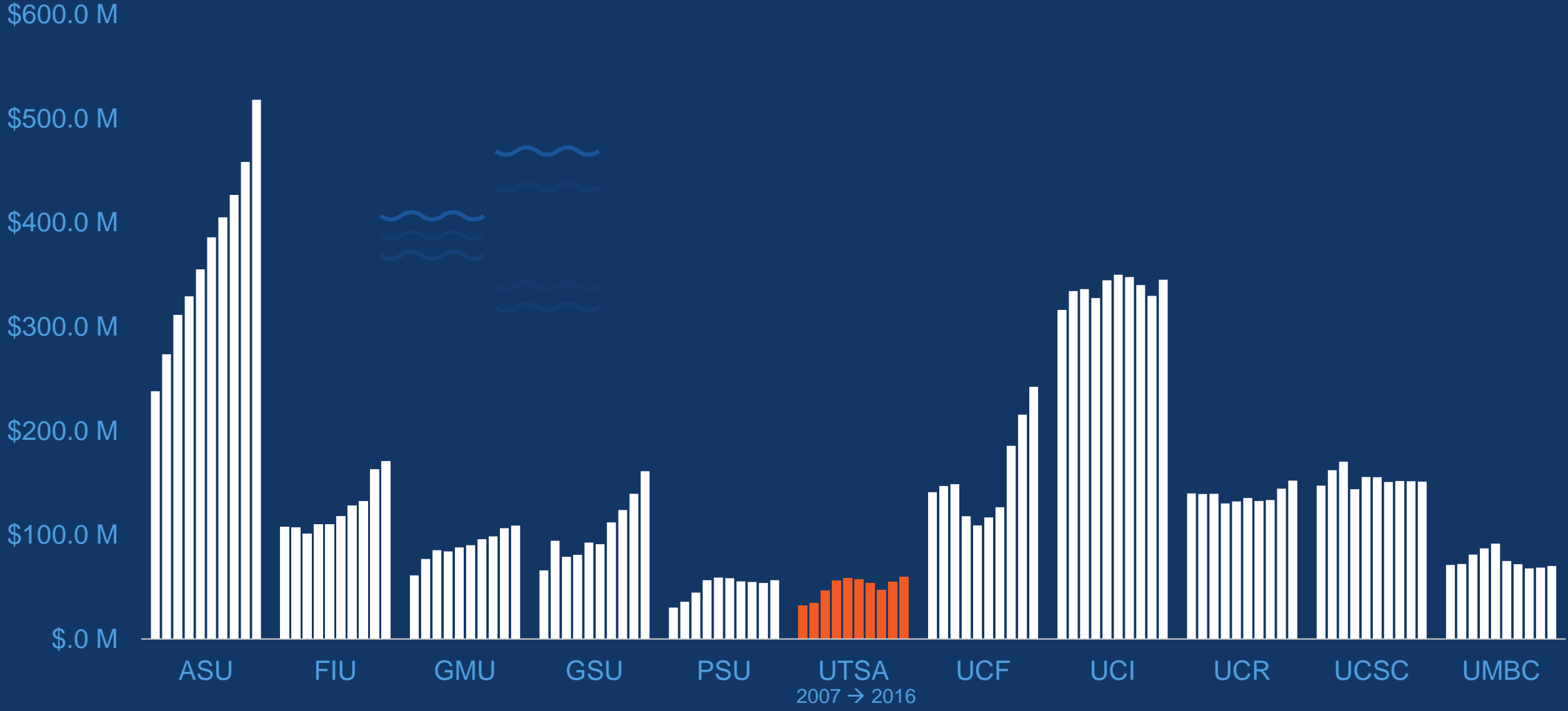
Percent of Undergraduate Students Awarded Pell Grants Annually by University from 2009-2016



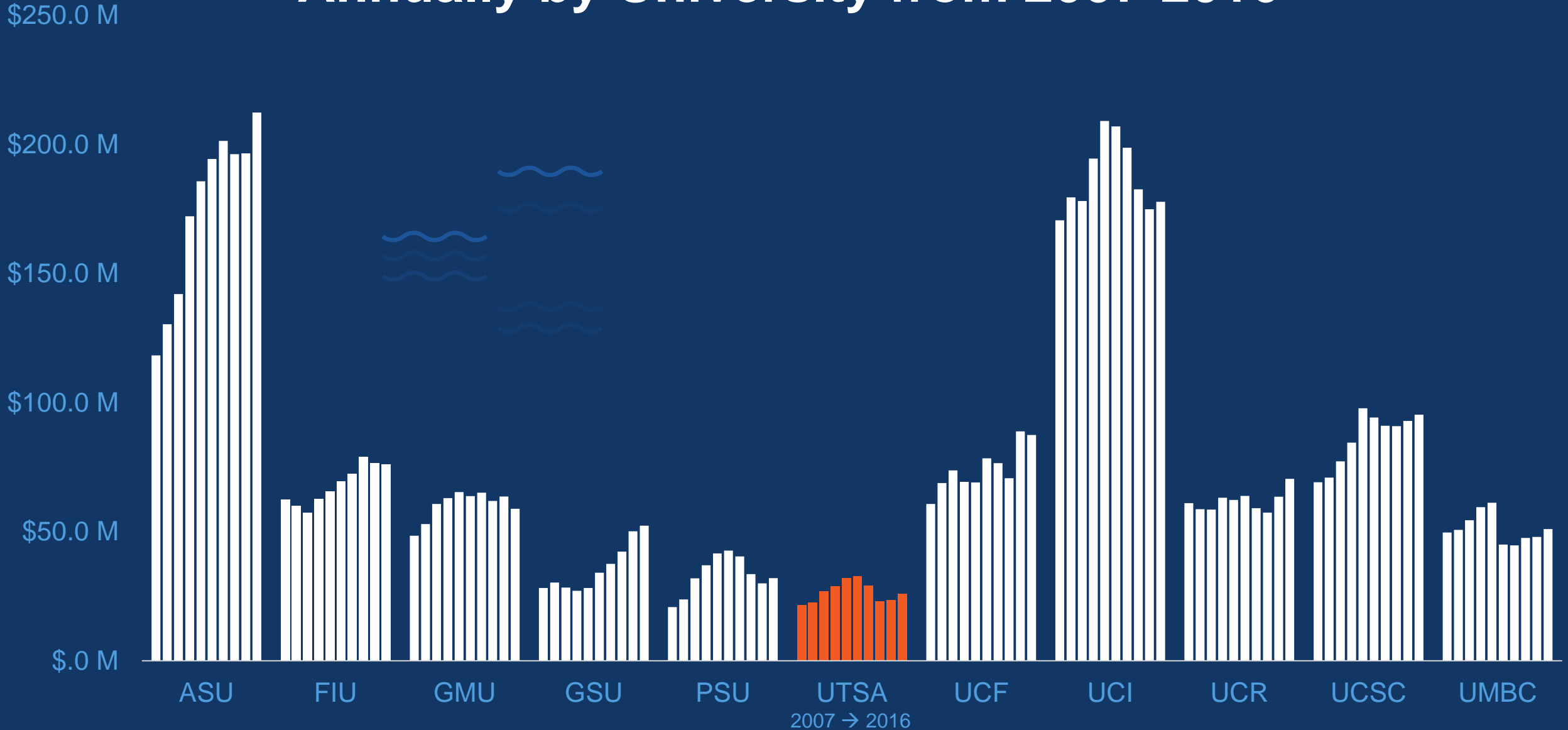
Headcount of Tenure and Tenure Track Faculty Annually by University from 2007-2016



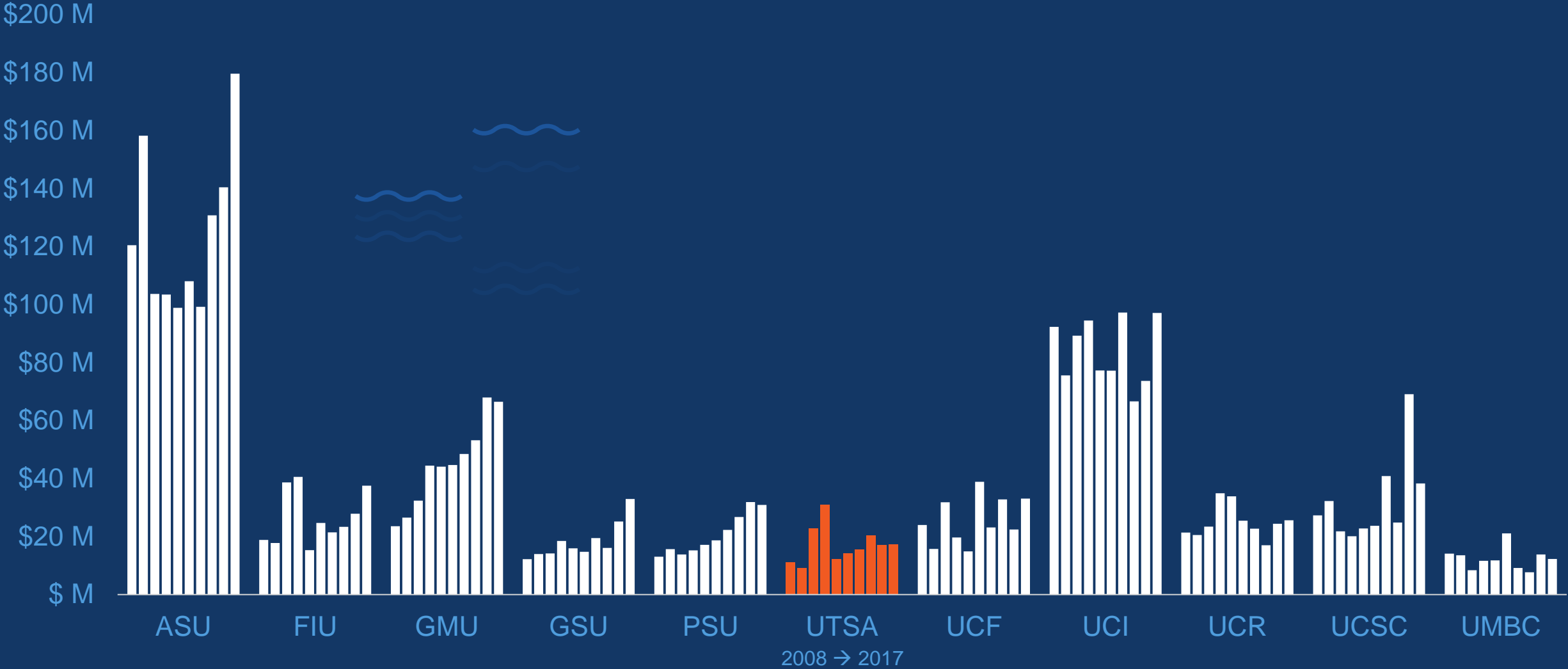
Total Research Expenditures Annually by University from 2007-2016



Federally Financed Research Expenditures Annually by University from 2007-2016

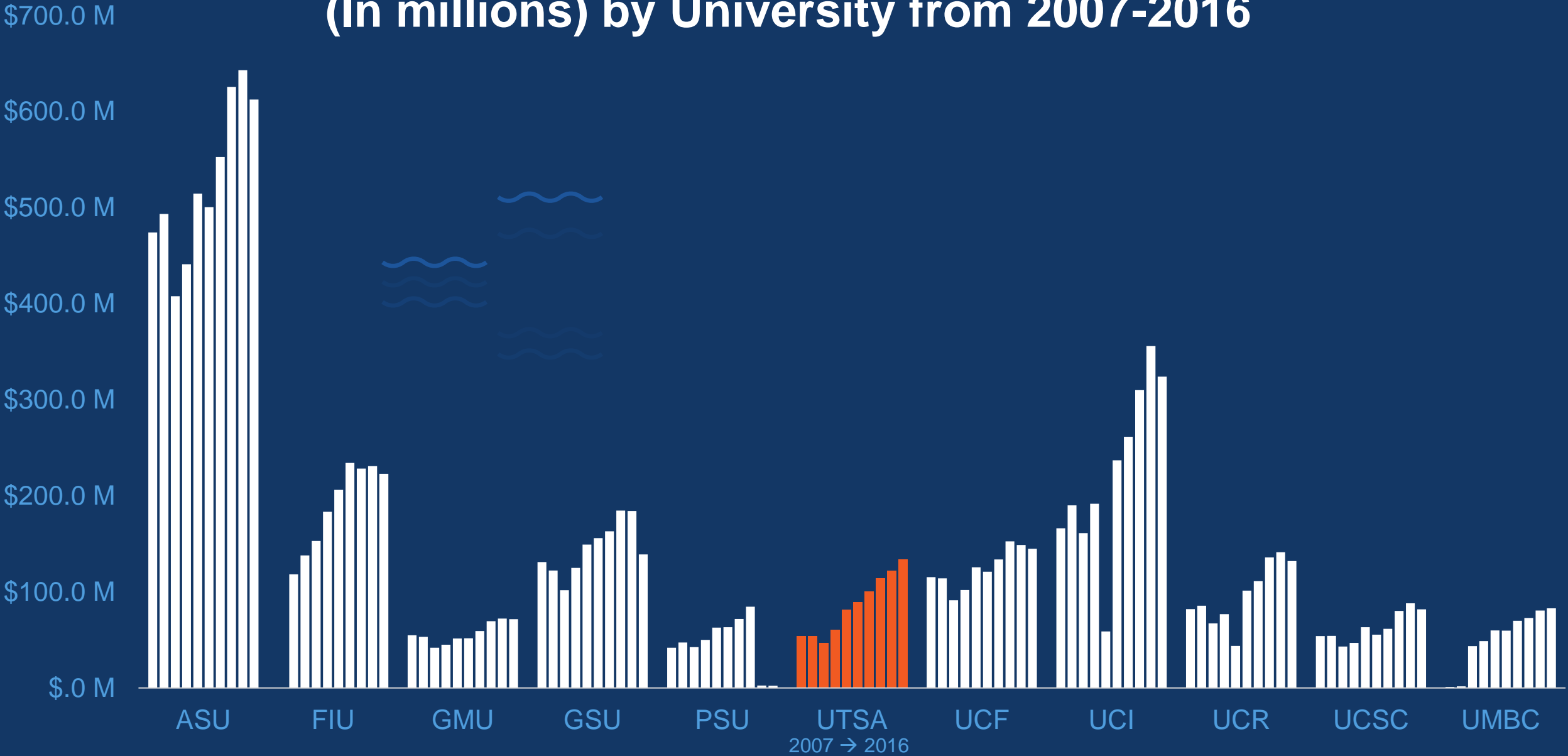


Annual Giving by University (in millions) from 2008-2017

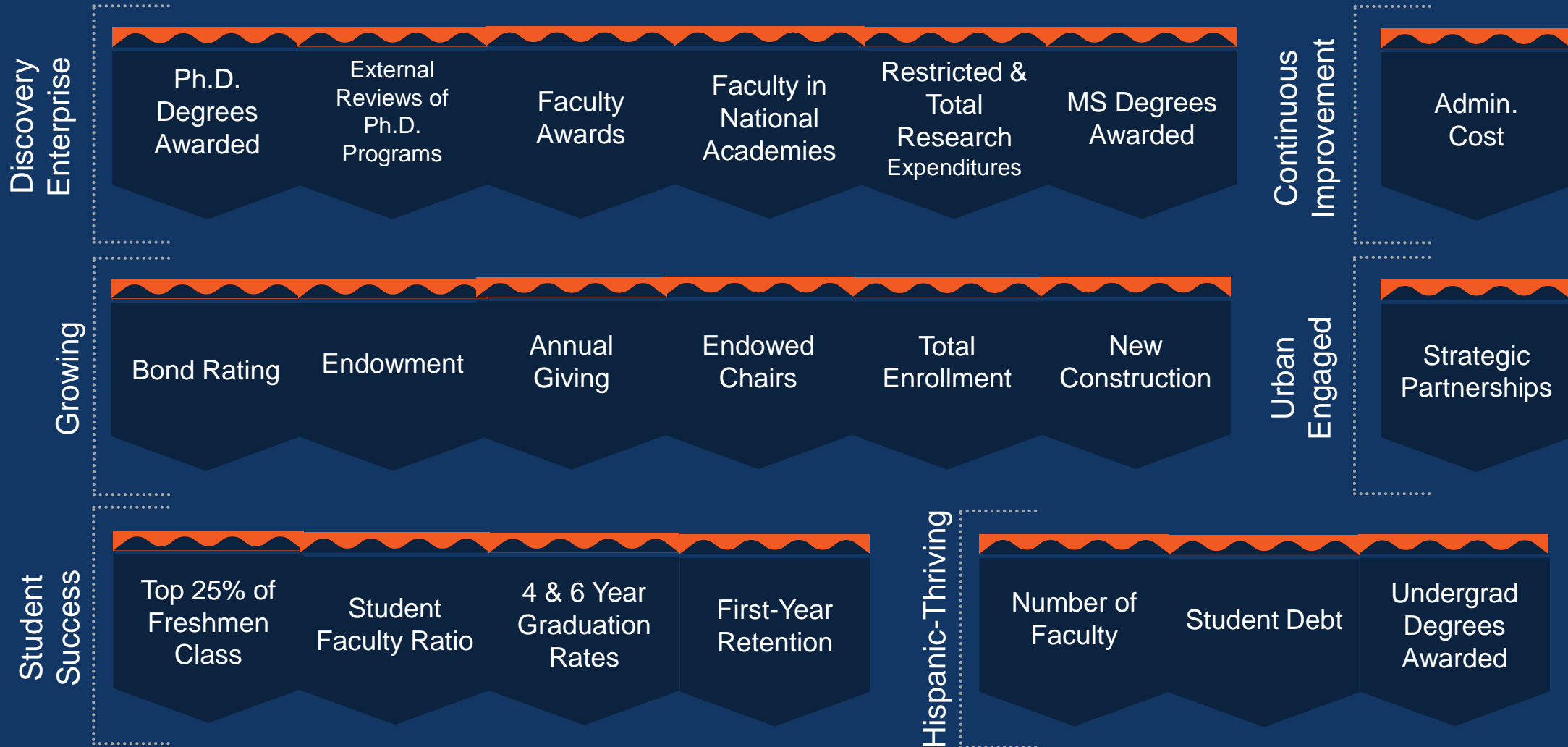


Source: Voluntary Support of Education (VSE)

Value of Endowment Assets at End of the Fiscal Year (In millions) by University from 2007-2016



Key Performance Indicators



Initiatives

Launched in 2017

17.1 Strategic Enrollment Management

17.2 Weighted Credit Hour Optimization

17.3 Sexual Assault and Prevention

17.4 Student Success

17.5 Dreamers' Center (Main)

17.6 Behavioral Intervention

17.7-Finance and Budget

17.8 Athletics Facility (Main)

17.9 Reaffirmation of SACSCOC Accreditation

17.10 Strategic Communications

Items in orange related to External Relations

Initiatives

Ongoing in 2018

18.1 School of Data Science (Downtown)

18.2 National Security Collaboration Center (Downtown)

18.3 New Business Building (Downtown)

18.4 Urban Education Institute (Downtown)

18.5 Cattleman Square (Downtown)

18.6 Campus Master Plan

18.7 New Dorms (Main)

18.8 Research Excellence (R1/NRUF)

18.9 Strategic Hires & Endowed Chairs (plus GURI)

18.10 Data Governance & Integrity

Initiatives

Upcoming in 2019

19.1 East Village (Main)

19.2 Classroom to Career

19.3 National Scholarships & Fellowships

19.4 Experiential Learning

19.5 Research Park (Main)

19.6 Asset Strategic Development & Monetization

19.7 Annual Giving Increase

19.8 Capital Campaign Launch

19.9 50th Anniversary

19.10 Corporate & Foundation Strategic Partnerships

19.11 Honors College (Main)

19.12 Honors Dormitory (Main)

19.15 College-Based Needs Philanthropy

Initiatives

Planned in 2020

20.1 Brain Health Endowed Program

20.2 Cybersecurity Endowed Program

20.3 Water-Energy Endowed Program

20.4 Biomedical Endowed Program

20.5 Tissue Engineering Endowed Program

20.6 Drug Discovery Endowed Program

20.7 Urban Science Institute (Downtown)

20.8 Student Success Center (Main)

20.9 Fine and Performing Arts Center (Main)

20.10 College Naming Philanthropy

20.11 Research Centers & Institutes Naming Philanthropy



Initiatives

Likely in 2021

21.1 New Basketball Facility (Main)

21.2 New Education Building (Downtown)

21.3 Endowed Chairs and Professorships

21.4 New Architecture Building (Downtown)

21.5 Student Scholarships

21.6 School of Entrepreneurship & Innovation
(Downtown)

21.7 Fine and Performing Arts Center
(Downtown)

21.8 Student Union (Downtown)

21.9 Student Success Center (Downtown)

21.10 Public Health Endowed Program

Connecting it All

Moving the Dial



Vision Pathway

1

UTSA will be a discovery enterprise with the nation's highest research classifications

KPI Targets

- **\$50M Restricted Research Expenditures / 2020**
- **\$200M Total Research Expenditures / 2020**
- **225 PhDs Awarded / 2020**
- **6 PhD Programs Externally Reviewed / 2020**
- **15 Faculty Awards / 2020**
- **7 Academy Members / 2020**
- **Number of MS Degrees Awarded / annual targets**

Initiatives and Leads

School of Data Science / 18.1
Primary Espy
Secondary Funk-Baxter, French

NSCC / 18.2
Primary Eighmy
Secondary Arulanandam

Campus Master Plan / 18.6
Primary Espy
Secondary Eighmy, Funk-Baxter

Research Excellence / 18.8
Primary Arulanandam

Strategic Hires & Endowed Chairs / 18.9
Primary Espy
Secondary Arulanandam

Research Park / 19.5
Primary Arulanandam
Secondary Espy, French

Annual Giving / 19.7
Primary French
Secondary Eighmy

Capital Campaign Launch / 19.8
Primary French
Secondary Eighmy

Corp. & Foundation Partnerships / 19.10
Primary French
Secondary Arulanandam

Diversity & Inclusion / 19.13
Primary VPIE

Vision Pathway

2

UTSA will be
a student
success
exemplar

KPI Targets

- < 20 Student/Faculty Ratio / 2028
- 2,000 Faculty / 2028
- 85% First Year Retention / 2028
- < \$20,000 Average Student Debt / 2028
- 55% of Freshmen in Top 25% of Class / 2020
- 35% 4-Year Graduation Rate / 2028
- 60% 6-Year Graduation Rate / 2028

Initiatives and Leads

Strategic Enrollment Management / 17.1
Primary Blazer

Student Success / 17.4
Primary Gonzales

SACSCOC Accreditation / 17.9
Primary Fielder

Strategic Communications / 17.10
Primary French
Secondary Izbrand

School of Data Science / 18.1
Primary Espy
Secondary Funk-Baxter, French

New Business Building / 18.3
Primary Eighmy
Secondary Funk-Baxter, French

Urban Education Institute / 18.4
Primary Eighmy
Secondary Funk-Baxter, French

Campus Master Plan / 18.6
Primary Espy
Secondary Eighmy, Funk-Baxter

New Main Campus Dorms / 18.7
Primary Funk-Baxter
Secondary Gonzalez

Strategic Hires & Endowed Chairs / 18.9
Primary Espy
Secondary Arulanandam

Vision Pathway

3

UTSA will be growing to serve more students and reach our full potential as a university

KPI Targets

- **\$500M Endowment** / 2028
- **\$25M Annual Giving** / 2020
- **10 Endowed Chairs Per Year** / 2020
- **45,000 Total Enrollment** / 2028
- **> 3M ft² New Construction** / 2028
- **AAA Bond Rating** / 2021
- **Undergrad Degrees Awarded** / annual targets
- **225 PhDs Awarded** / 2020
- **6 PhD Programs Externally Reviewed** / 2020
- **Number of MS Degrees Awarded** / annual targets

Initiatives and Leads

Strategic Enrollment Management / 17.1
Primary Blazer

Weighted Credit Hour Optimization / 17.2
Primary Agrawal
Secondary Funk-Baxter

Student Success / 17.4
Primary Gonzales

Athletics Facility / 17.8
Primary Campos

Strategic Communications / 17.10
Primary French
Secondary Izbrand

School of Data Science / 18.1
Primary Espy
Secondary Funk-Baxter, French

NSCC / 18.2
Primary Eighmy
Secondary Arulanandam

New Business Building / 18.3
Primary Eighmy
Secondary Funk-Baxter, French

Urban Education Institute / 18.4
Primary Eighmy
Secondary Funk-Baxter, French

Cattleman's Square / 18.5
Primary Eighmy
Secondary Funk-Baxter

Campus Master Plan / 18.6
Primary Espy
Secondary Eighmy, Funk-Baxter

New Main Campus Dorms / 18.7
Primary Funk-Baxter
Secondary Gonzalez

Research Excellence / 18.8
Primary Arulanandam

Strategic Hires & Endowed Chairs / 18.9
Primary Espy
Secondary Arulanandam

East Village / 19.1
Primary Funk-Baxter
Secondary Gonzalez

National Scholarships & Fellowships / 19.3
Primary Espy

Research Park / 19.5
Primary Arulanandam
Secondary Espy, French

Annual Giving / 19.7
Primary French
Secondary Eighmy

Capital Campaign Launch / 19.8
Primary French
Secondary Eighmy

50th Anniversary / 19.9
Primary French
Secondary Eighmy

Corp. & Foundation Partnerships / 19.10
Primary French
Secondary Arulanandam

Honors College / 19.11
Primary Espy

Honors Dorm / 19.12
Primary Espy
Secondary Funk-Baxter

College-Based Philanthropy / 19.15
Primary Espy
Secondary French

Vision Pathway

4

**UTSA will be
an urban
engaged
exemplar**

KPI Targets

- **\$500M Endowment / 2028**
- **\$25M Annual Giving / 2020**
- **10 Endowed Chairs Per Year / 2020**
- **5 Strategic Partnerships Per Year / 2023**

Initiatives and Leads

**Strategic Enrollment
Management / 17.1**
Primary Blazer

**School of
Data Science / 18.1**
Primary Espy
Secondary Funk-Baxter, French

NSCC / 18.2
Primary Eighmy
Secondary Arulanandam

**New Business
Building / 18.3**
Primary Eighmy
Secondary Funk-Baxter, French

**Urban Education
Institute / 18.4**
Primary Eighmy
Secondary Funk-Baxter, French

Cattleman's Square / 18.5
Primary Eighmy
Secondary Funk-Baxter

Campus Master Plan / 18.6
Primary Espy
Secondary Eighmy, Funk-Baxter

Experiential Learning / 19.4
Primary Espy

**Diversity &
Inclusion / 19.13**
Primary VPIE

Vision Pathway

5

UTSA will be
a Hispanic-
Thriving
Institution

KPI Targets

- < 20 Student/Faculty Ratio / 2028
- 2,000 Faculty / 2028
- 85% First Year Retention / 2028
- < \$20,000 Average Student Debt / 2028
- 55% of Freshmen in Top 25% of Class / 2020
- 35% 4-Year Graduation Rate / 2028
- 60% 6-Year Graduation Rate / 2028
- Number of Undergrad Degrees Awarded / annual targets

Initiatives and Leads

Campus Master Plan / 18.6

Primary Espy

Secondary Eighmy, Funk-Baxter

Classroom to Career / 19.2

Primary Espy

National Scholarships & Fellowships / 19.3

Primary Espy

Experiential Learning / 19.4

Primary Espy

Annual Giving / 19.7

Primary French

Secondary Eighmy

Diversity & Inclusion / 19.13

Primary VPIE

Vision Pathway

6

UTSA will be
a university of
continuous
improvement

KPI Targets

- > 3M ft² New Construction / 2028
- AAA Bond Rating / 2021
- < 8% Administrative Cost Ratio / 2021

Initiatives and Leads

Finance and Budget / 17.7
Primary Funk-Baxter

**SACSCOC
Accreditation** / 17.9
Primary Fielder

Campus Master Plan / 18.6
Primary Espy
Secondary Eighmy, Funk-Baxter

New Main Campus Dorms / 18.7
Primary Funk-Baxter
Secondary Gonzalez

Data Governance & Integrity / 18.10
Primary Sagin

**Asset Strategic Development
& Monitization** / 19.6
Primary Eighmy

Information Technology / 19.14
Primary VPIMT



External Relations

Your Role in UTSA's 10-Year Vision

VPER Led Initiatives

- Annual Giving
- Endowed Professorships and Chairs
- Undergraduate Scholarships
- Graduate Fellowships
- Corporate & Foundation Strategic Partnerships
- Capital Projects Fundraising
- Strategic Communications



External Relations Key Performance Indicators

- Endowment, Development, Annual Giving
- Endowed Professorships & Chairs
- Undergraduate Scholarships
- Graduate Fellowships
- Corporate & Foundation Strategic Partnerships
- Capital Projects Fund Raising
- Number of Donors
- Annual Giving
- Alumni Participation
- Alumni Giving
- Storytelling, Brand Position, Market Share

Thoughts on our next Capital Campaign

Possible Themes

- A discovery enterprise with the nation's highest research classifications
- A student success exemplar
- An urban engaged exemplar
- A Hispanic-thriving institution

Possible Focus Areas

Annual Giving
19.7

Endowed Professorships & Chairs
18.4, 18.8, 18.9, 19.15, 20.1, 20.7, 21.3, 21.6

Undergraduate Scholarships
17.4, 19.2, 19.3, 19.4, 19.15, 20.1, 20.7, 21.5, 21.6

Graduate Fellowships
18.9, 19.15, 20.1, 20.7, 21.6

Corporate & Foundation Strategic Partnerships
18.2, 18.4, 19.10, 19.15, 20.1, 20.6, 20.11, 21.6

Capital Projects Fundraising
17.8, 18.1, 18.2, 18.3, 18.4, 19.15, 20.7, 20.8, 20.9, 20.10, 21.1, 21.2, 21.4, 21.6, 21.8, 21.9

Marketing
17.10, 19.8, 19.9

Possible Goals

- > \$300M from campaign (\$500M total)
- 200 new endowed professorships and chairs (\$100M)
- \$10M in undergraduate scholarships endowment
- \$15M in graduate fellowships endowment
- \$20M in corporate & foundation strategic partnership master research agreements
- \$100M in capital projects fund raising (tied to \$700M in PUF/TRB/Federal)
- 25% increase in number of donors
- \$25M in annual giving
- 15% alumni participation
- 10% alumni giving
- Wonderful, transformative journey and story

Initiative Overview

School of Data Science

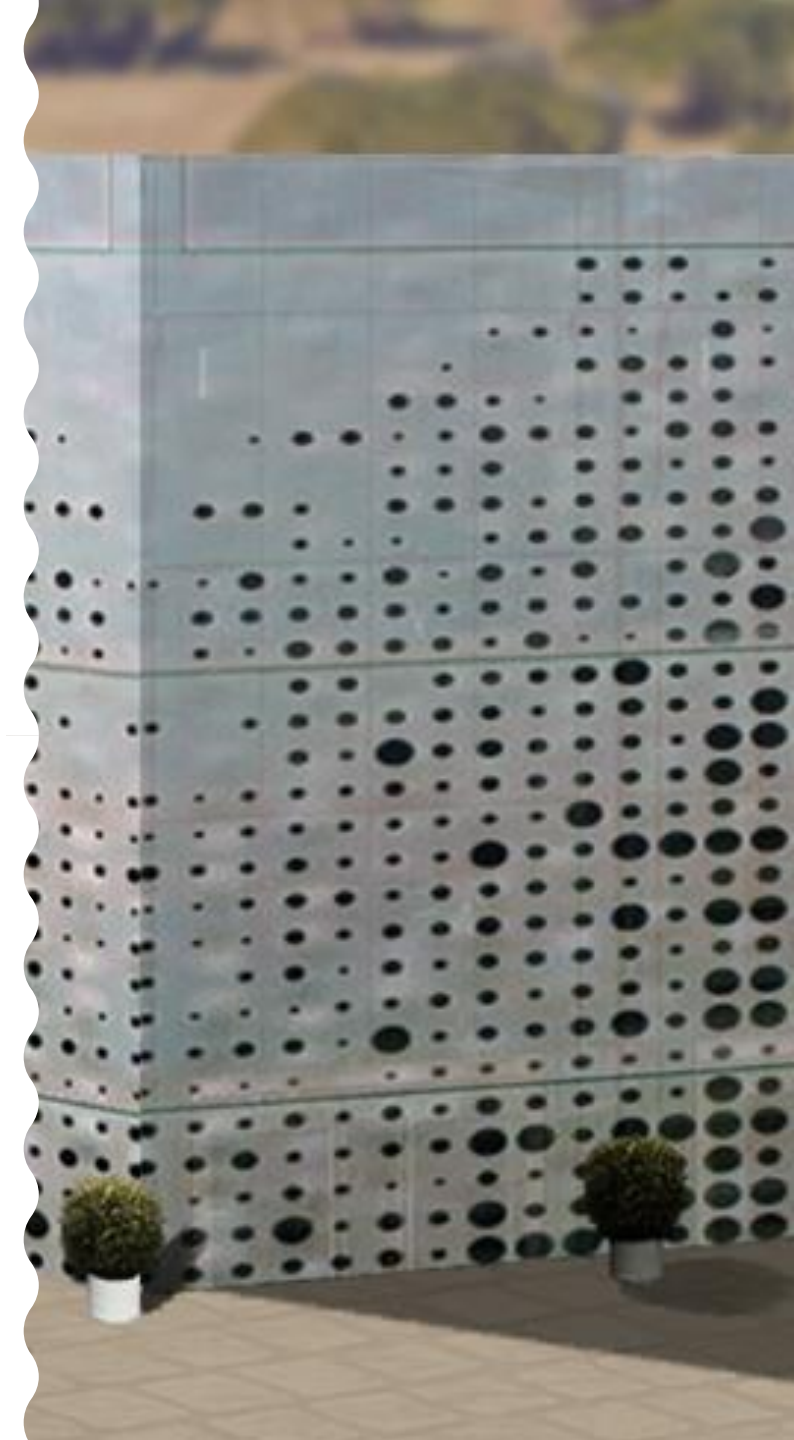
LOCATION	Downtown
SIZE	138,000 GSF
COST	\$57M, \$412/GSF
FUNDING	PUF (requested) Transformative \$15M gift (final negotiation)
IN BRIEF	Includes Departments of Computer Science, Computer Engineering, SDS, Info Systems & Cybersecurity
FUNDRAISING OPPORTUNITIES	Endowed chair for new dean (\$10M) Endowments for graduate fellowships (\$10M) Endowments for undergraduate scholarships (\$10M) Naming opportunities Corporate R&D MRA opportunities



Initiative Overview

National Security Collaboration Center

LOCATION	Downtown
SIZE	80,000 GSF
COST	\$33M, \$412/GSF
FUNDING	PUF (requested)
IN BRIEF	<p>Includes SCIF, HPS, visualization, test range, collaborator, likely DHS Center of Excellence, NSA Center, DOE Hub</p> <p>Involves Research Centers, federal & private partners</p>
FUNDRAISING OPPORTUNITIES	<p>Endowed chair for new director (\$5M)</p> <p>Endowments for graduate fellowships (\$5M)</p> <p>Endowments for undergraduate scholarships (\$5M)</p> <p>Corporate R&D MRA opportunities</p>



Initiative Overview

New Business School

LOCATION	Downtown
SIZE	250,000 GSF
COST	\$126M, \$504/GSF
FUNDING	TRB (requested) Transformative \$50M naming gift (under exploration)
IN BRIEF	Includes Departments of Management Science & Statistics, Finance, Entrepreneurship
FUNDRAISING OPPORTUNITIES	Endowments for graduate fellowships (\$10M) Endowments for undergraduate scholarships (\$10M) Naming opportunities Corporate R&D MRA opportunities



Portland State University
School of Business

Initiative Overview

Urban Education Institute

LOCATION	Downtown
SIZE	130,000 GSF
COST	\$65M, \$504/GSF (estimated)
FUNDING	\$2M seed gift (to be announced) Additional transformative gifts (needed) Funding from partnerships with ISDs (needed)
IN BRIEF	Laboratory school for COEHD
FUNDRAISING OPPORTUNITIES	Endowments for graduate fellowships (\$10M) Endowments for undergraduate scholarships (\$10M) Naming opportunities Foundation partnerships



University of Chicago
Urban Education Institute

Initiative Overview

Urban Science Institute

LOCATION	Downtown
SIZE	70,000 GSF
COST	\$35M, \$504/GSF (estimated)
FUNDING	Transformative gifts (needed) Large foundation partnerships (needed) Federal, state & foundation R&D funds
IN BRIEF	Transdisciplinary research institute with 200 scientists
FUNDRAISING OPPORTUNITIES	Endowment for director (\$10M) Endowments for graduate fellowships (\$10M) Endowments for undergraduate scholarships (\$10M) Naming opportunities



New York University
Center for Urban Science & Progress

UTSA[®]

The University of Texas
at San Antonio[™]



Questions?
Thank you!