



Campus Conversation 2.0

UTSA Libraries, Art Collection and Institute of Texan Cultures

Dr. Taylor Eighmy
May 16, 2019



Campus Conversations 2.0

External Relations
August 3, 2018

Faculty Senate
August 15, 2018

**Communications
Collective**
October 11, 2018

**Student Government
Association**
October 18, 2018

Athletics
December 11, 2018

Alumni Board
January 23, 2019

**Audit, Compliance and
President's Office**
January 31, 2019

VPREDKE
February 20, 2019

**Student Success and Global
Initiatives**
February 21, 2019

**Student Affairs
Division**
April 29, 2019

**Business Affairs
Division**
April 30, 2019

Staff Council
May 1, 2019

**University College, Honors
College, Academic Success and
Graduate School**
May 10, 2019

**Library, Art Collection and
Institute of Texan Cultures**
May 16, 2019

**Strategic Enrollment and
Institutional Intelligence**
TBD

College of Sciences
TBD

College of Business
TBD

**College of Language and
Fine Arts**
TBD

**College of Education &
Human Development**
TBD

**Department Chairs
Council**
TBD

College of Engineering
TBD

COACP & COPP
TBD

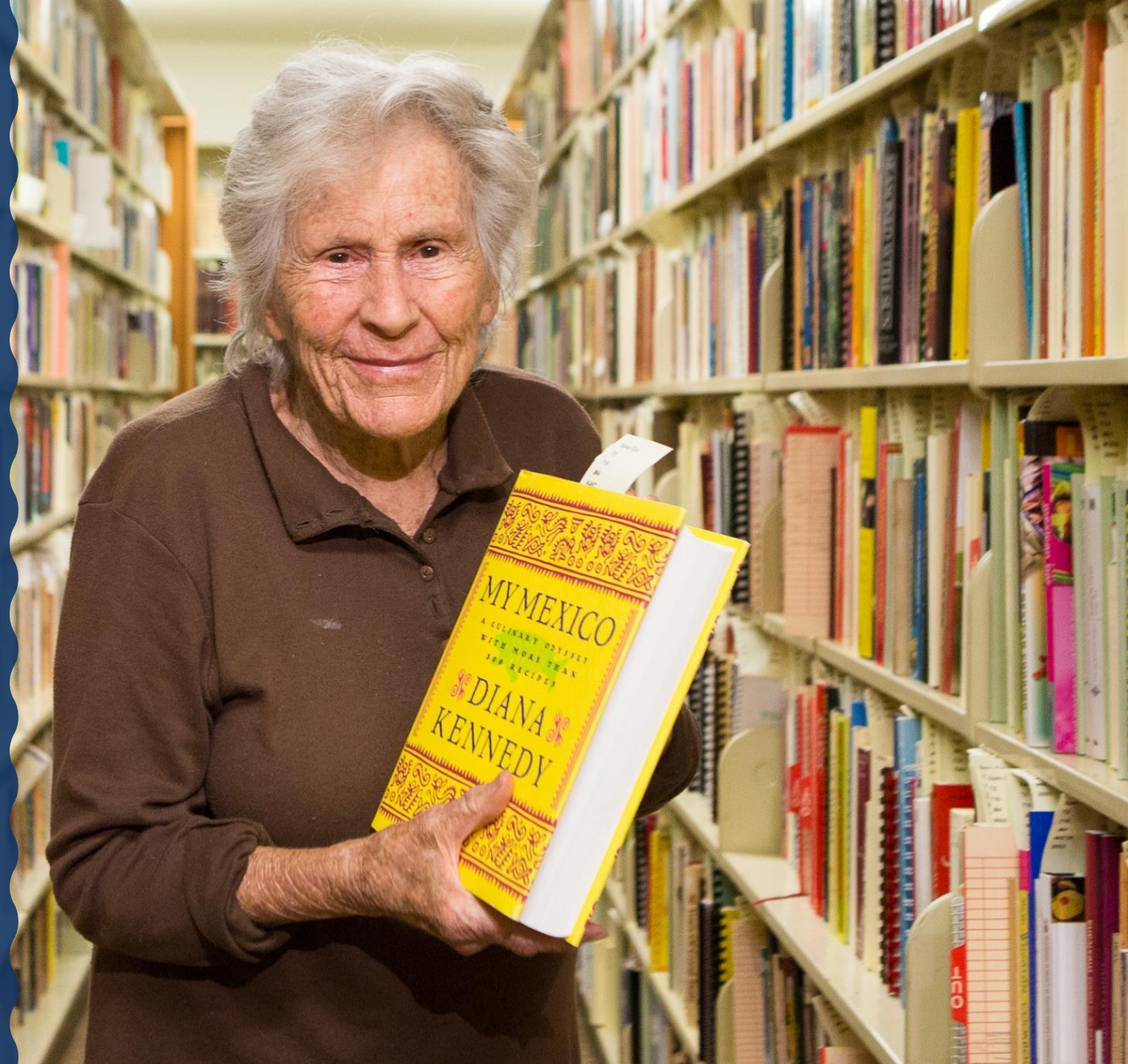


UTSA®

Updates & Recent Accomplishments

World-Class Acquisition
Diana Kennedy
Archive

UTSA Libraries



Biennial Budget





UTSA Day at the Capitol

April 23, 2019

Students, faculty and alumni meet with state lawmakers to help increase public and legislative support for the university

New Campus Senior Leadership



Myron Anderson

Vice President for
Inclusive Excellence



Veronica Mendez

Vice President for
Business Affairs



Kendra Ketchum

Vice President for
Information Management &
Technology



LT Robinson

Interim Dean of Students



New Appointments in **Academic Affairs**



David Silva
Dean of the College of
Sciences



Ambika Mathur
Vice Provost for
Graduate Studies and
Dean of the Graduate
School



Lisa Montoya
Vice Provost for
Global Initiatives



Gordon Taylor
Vice Provost for Academic
Finance and Administration



Reaccreditation Efforts

On Track

for 2020 Review



**RACING TO
REACCREDITATION 2020**



HAPPY BIRTHDAY, UTSA!
50th Anniversary

SAVE THE DATES

June 5, 2019

**UTSA 50th ANNIVERSARY
COMMEMORATION &
BIRTHDAY PARTY**

October 18, 2019

**BESTFEST
BIRTHDAY BASH**





Campus Climate Initiatives

Preventing Sexual Assault & Misconduct

A university-wide framework to ensure a safe place for all Roadrunners to study, work and live

[UTSA.EDU/SAFECAMPUS](https://utsa.edu/safecampus)



Respectful Discourse

Providing the UTSA community with the knowledge, tools and skills to engage in serious, respectful and productive exchanges of views

UTSA.EDU/CIVICDISCOURSE



Inclusive Excellence

A university-wide framework for becoming a more inclusive campus where all members of the UTSA community can engage, learn and thrive

[UTSA.EDU/DIVERSITY](https://www.utsa.edu/diversity)





UTSA®

Cultivating Staff Excellence

Inclusive Excellence Initiative

Inclusive Recruitment Committee

Increasing the recruitment of
diverse faculty and staff



Inclusive Excellence Initiative Campus Climate Survey

A comprehensive campus climate survey aimed at furthering UTSA's inclusivity and workplace satisfaction goals





Strategic Implementation Plan

10 Aspirant Peer Models of Excellence



UC SANTA CRUZ



UMBC



VISION

UTSA in 10 Years

>>45,000
students

>2,000
faculty

>3,500
staff

4+
thriving campuses, with more
under consideration

>3 million ft²
new construction
across campuses

>>85%
first-year retention rate

>>35%
four-year graduation rate

>>60%
six-year graduation rate

>75%
of students have some form
of experiential learning

6-8
areas of scholarly distinction

R1/NRUF
New Carnegie classification
& access to the National
Research University Fund

>15
faculty in the
national academies

>>\$1B
annual budget

>>\$400M
endowment

>\$300M
in annual research
expenditures



UTSA moving forward

2018
32,000

2028
>45,000

Students

2018
1,300

2028
>2,000

Faculty

2018
2,700

2028
3,500

Staff

2018
73.4%

2023
>85%

First-year retention rate

2018
25.1%

2023
>35%

Four-year graduation rate

2018
39.6%

2023
>60%

Six-year graduation rate

VISION

UTSA moving forward



2018
\$0.578B

2023
>\$1B

Annual budget

2018
\$69.6M

2028
>\$300M

Annual research expenditures

2018
\$164M

2028
>\$400M

Endowment

2018
77

2028
>300

Endowed
chairs/professorships

2018
3

2020
>15

Faculty in the
national academies

2018
35%

2028
75%

of students have some form
of experiential learning

The logo for the University of Texas at San Antonio (UTSA) is located in the upper left corner. It consists of the letters "UTSA" in a white, bold, sans-serif font. Above the text are three wavy lines: the top one is orange, and the two below it are blue. The entire logo is set against a dark blue background with a decorative, wavy white border on the left side.

UTSA®

Charter, Mission, Vision & Values

Charter

new - proposed

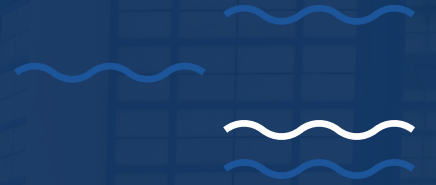
UTSA is an urban-serving discovery enterprise founded on the hopes and dreams of generations. We tackle society's grandest challenges through a relentless commitment to transformative learning experiences and the advancement of new knowledge. Our excellence is measured by the success of the diverse students we educate and the prosperity of the communities we serve.



Mission

unchanged

The University of Texas at San Antonio is dedicated to the advancement of knowledge through research and discovery, teaching and learning, community engagement and public service. As an institution of access and excellence, UTSA embraces multicultural traditions and serves as a center for intellectual and creative resources as well as a catalyst for socioeconomic development and the commercialization of intellectual property – for Texas, the nation and the world.





Vision

proposed

UTSA will be an exemplary urban-serving university, creating prosperity and opportunity for our students, our communities, and our world.





Core Values

unchanged

We encourage an environment of dialogue and discovery, where integrity, excellence, inclusiveness, respect, collaboration and innovation are fostered.



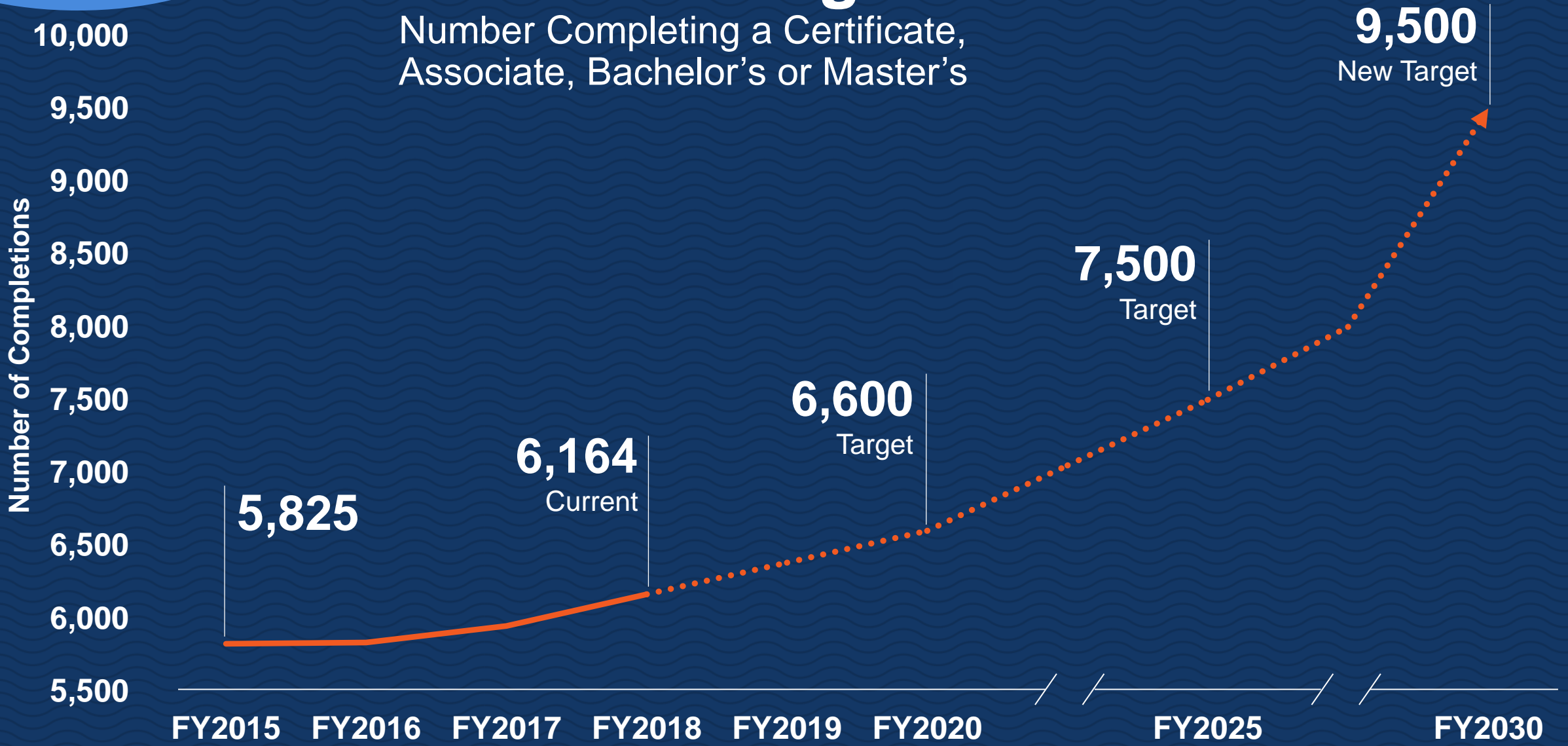


A model for student success

UTSA is a next generation Hispanic-thriving, multicultural institution where students from all backgrounds can excel. As a prosperity engine graduating world-engaged civic leaders of tomorrow, UTSA provides students with exceptional opportunities for experiential learning and classroom to career education.

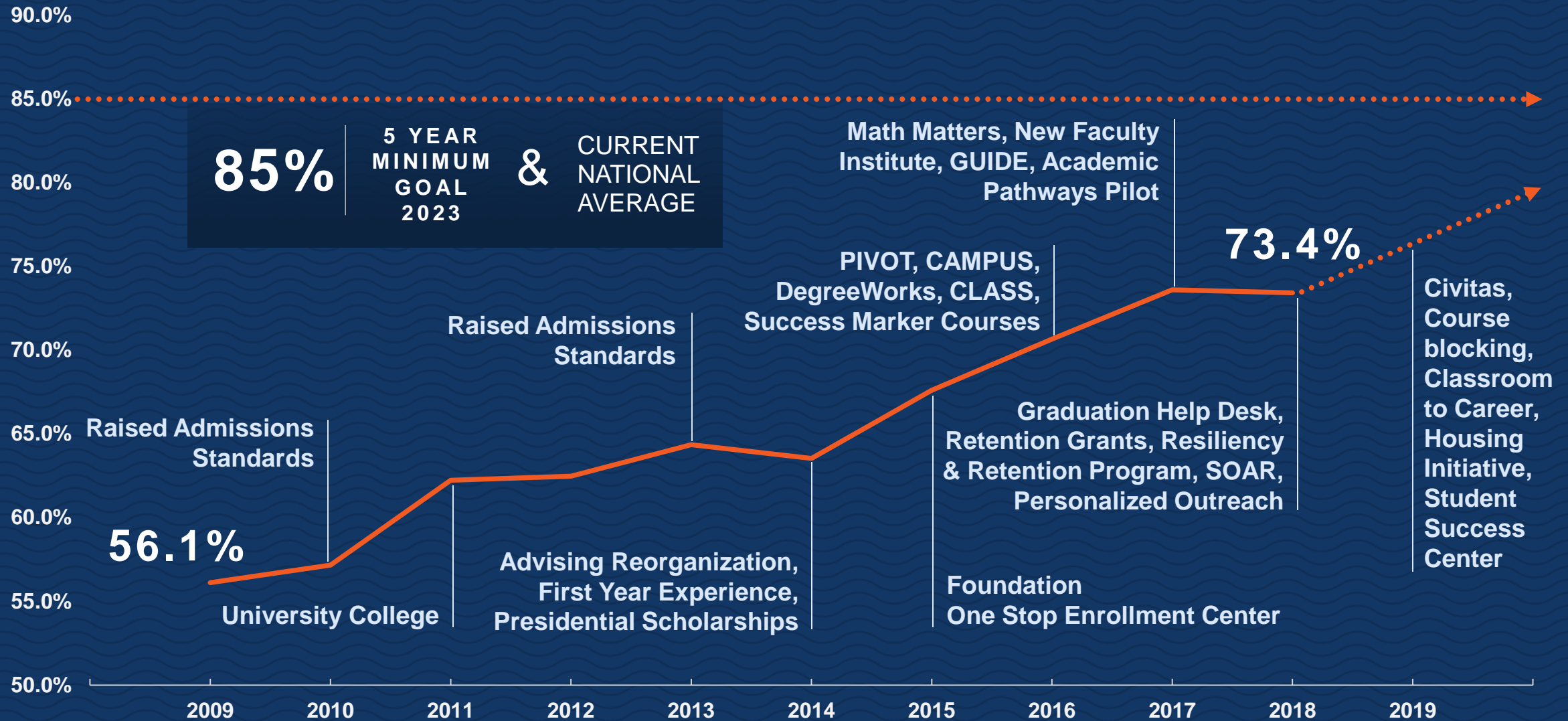
60x30TX Progress

Number Completing a Certificate,
Associate, Bachelor's or Master's



Data as reported to the Texas Higher Education Coordinating Board (THECB)

First-Year Retention



85%

5 YEAR
MINIMUM
GOAL
2023

&

CURRENT
NATIONAL
AVERAGE

Math Matters, New Faculty
Institute, GUIDE, Academic
Pathways Pilot

PIVOT, CAMPUS,
DegreeWorks, CLASS,
Success Marker Courses

73.4%

Civitas,
Course
blocking,
Classroom
to Career,
Housing
Initiative,
Student
Success
Center

Raised Admissions
Standards

56.1%

University College

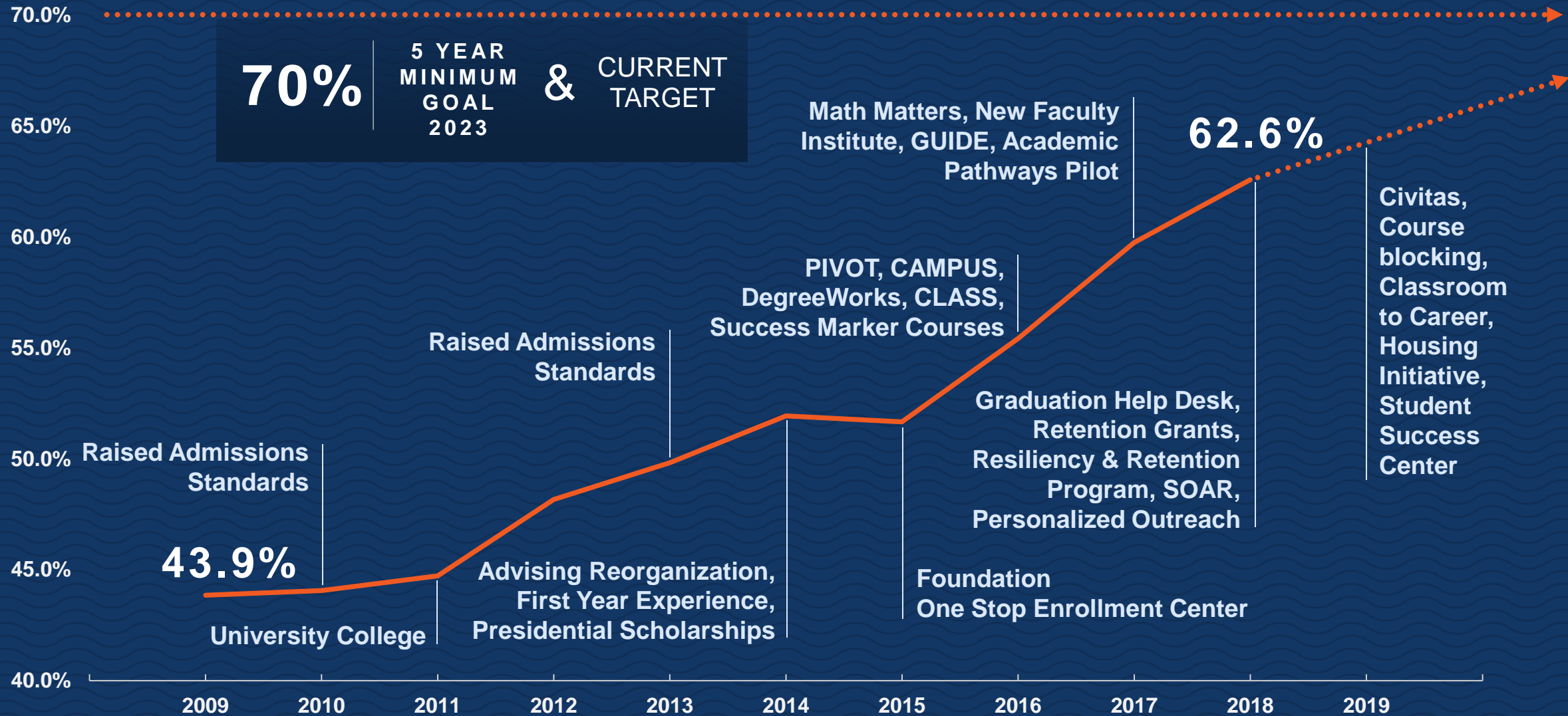
Raised Admissions
Standards

Advising Reorganization,
First Year Experience,
Presidential Scholarships

Graduation Help Desk,
Retention Grants, Resiliency
& Retention Program, SOAR,
Personalized Outreach

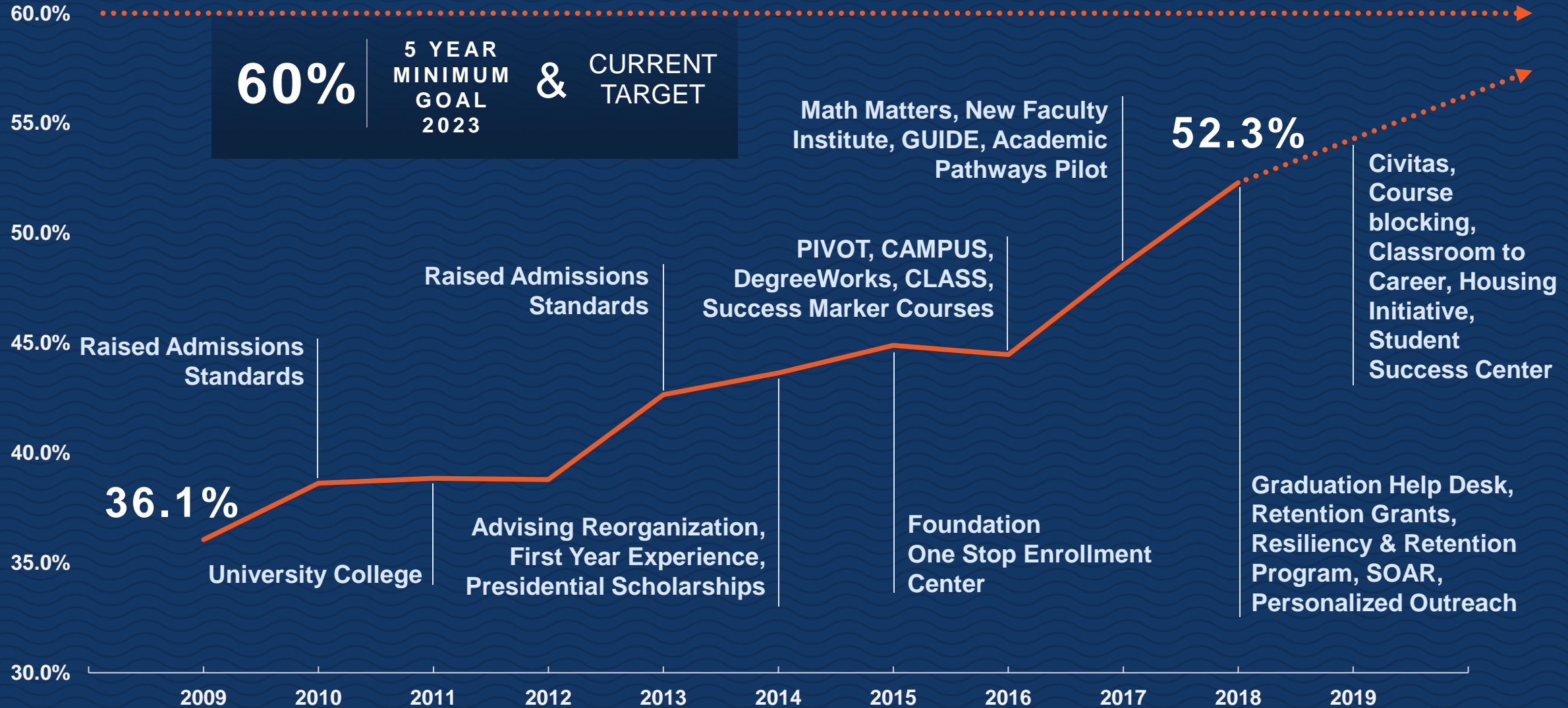
Foundation
One Stop Enrollment Center

Second-Year Persistence



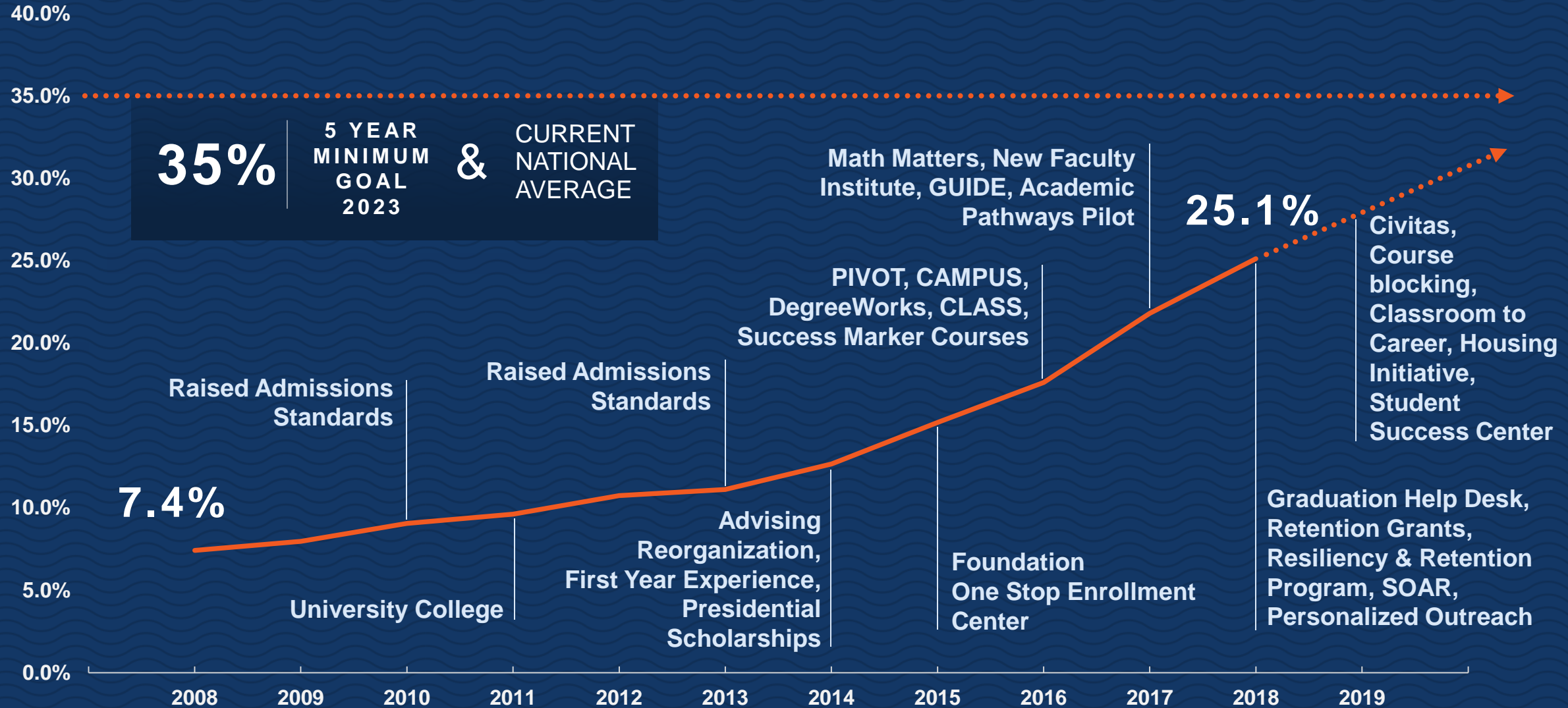
Data as reported to the Integrated Postsecondary Education Data System (IPEDS)

Third-Year Persistence



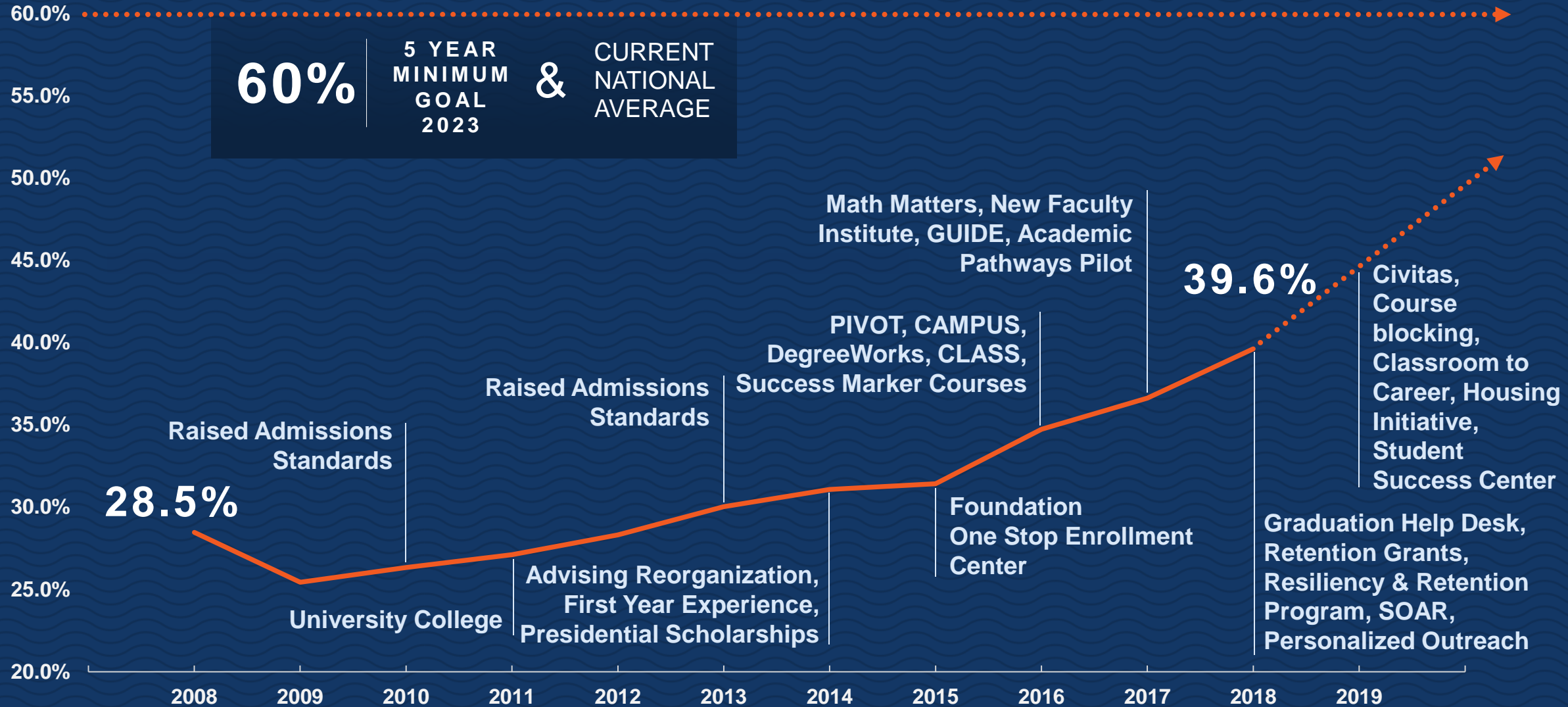
Data as reported to the Integrated Postsecondary Education Data System (IPEDS)

Four-Year Graduation Rates



Data as reported to the Integrated Postsecondary Education Data System (IPEDS)

Six-Year Graduation Rates

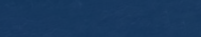
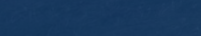
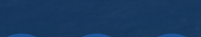


Data as reported to the Integrated Postsecondary Education Data System (IPEDS)

STUDENT
SUCCESS

Living & Learning Communities

Supporting student success and building community through special interest housing



STUDENT
SUCCESS

Advancing Research Excellence
**Distinguished
Student Awards**

2017-2019



Maria Victoria Alonso

2019 Truman
Scholarship Finalist



Jay'Len Boone

2019 Truman
Scholarship Finalist

Harry S. Truman Scholars



Sanah Jivani

2018 Truman
Scholarship Awardee

STUDENT
SUCCESS

Rebecca Revilla
2019 NSF Fellow



Lynée Massey
2019 NSF Fellow



National Science Foundation
**NSF Graduate
Research Fellows**



Travis Kotzur
2019 NSF Fellow

Barry M. Goldwater Scholars

Favour Obuseh

2019 Goldwater
Scholarship Recipient



Aldo Sepulveda

2019 Goldwater
Scholarship Recipient



A decorative vertical border on the left side of the slide, featuring a series of horizontal wavy lines in blue and orange colors.

A great public research university

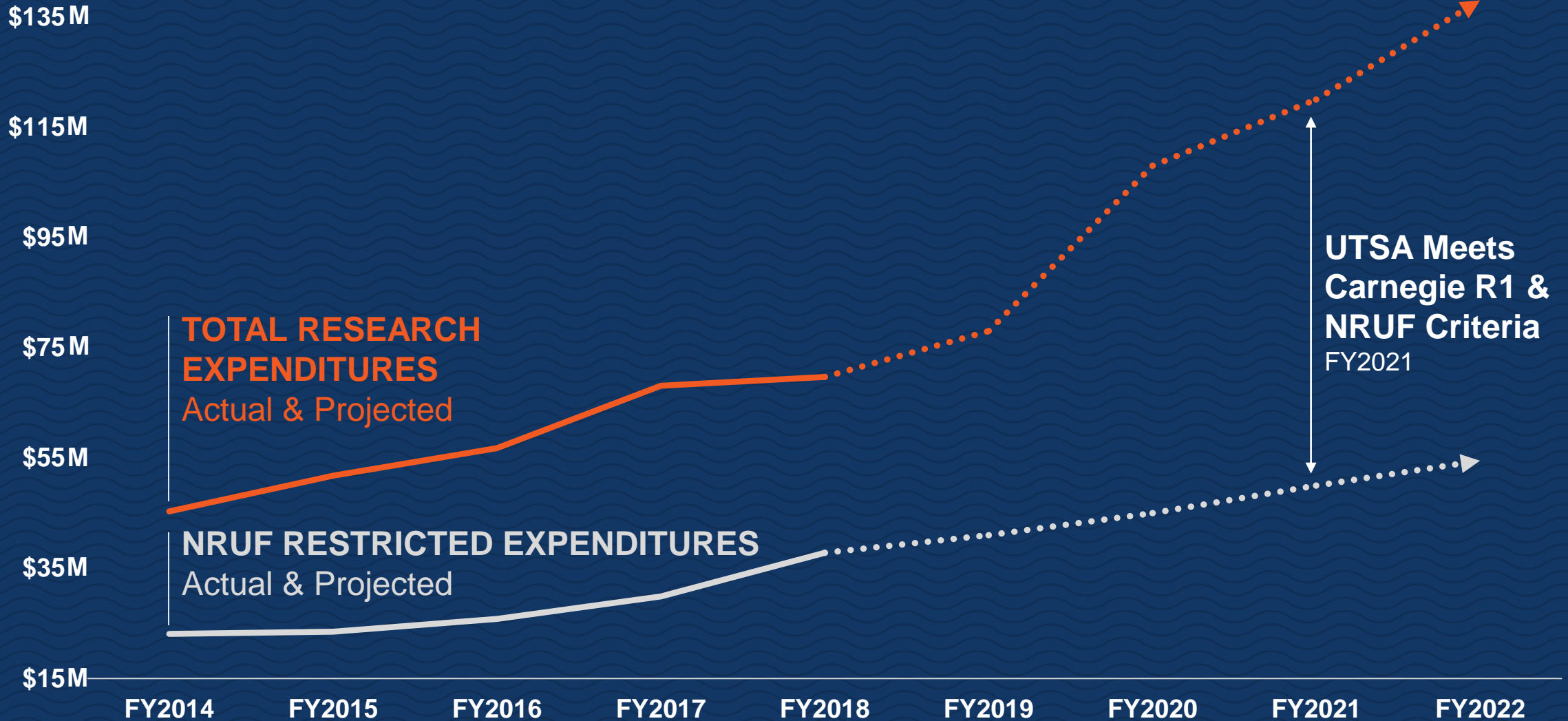
With a focus on driving San Antonio's knowledge economy, UTSA is an urban-serving university of the future living out the notion that great universities need great cities, and great cities need great universities. As a discovery enterprise on the fast track to attaining National Research University Fund eligibility and an R1 designation by the Carnegie Commission, UTSA is positioned to align with members of the prestigious Association of American Universities.

RESEARCH
EXCELLENCE

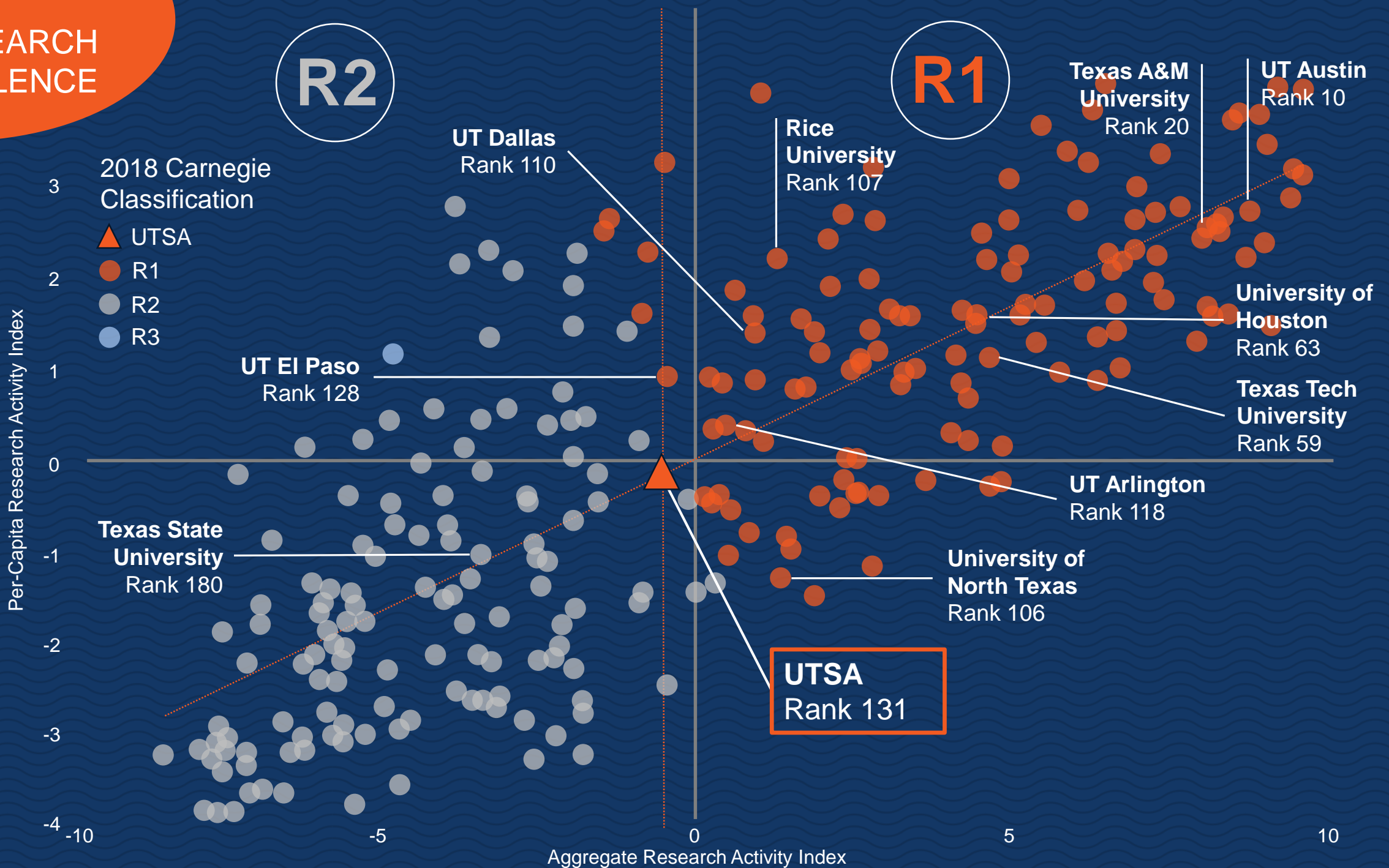
UTSA's Trajectory



UTSA's Research Momentum



Pathway to Carnegie R1





An exemplar for **strategic growth and innovative excellence**

UTSA will realize its full potential as a university by growing to become a more comprehensive institution. By focusing on nimbleness and continuous improvement, UTSA integrates innovative approaches and best practices to ensure goals align with operational processes. With a reputation as a great place to work, UTSA actively cultivates the excellence of its people.

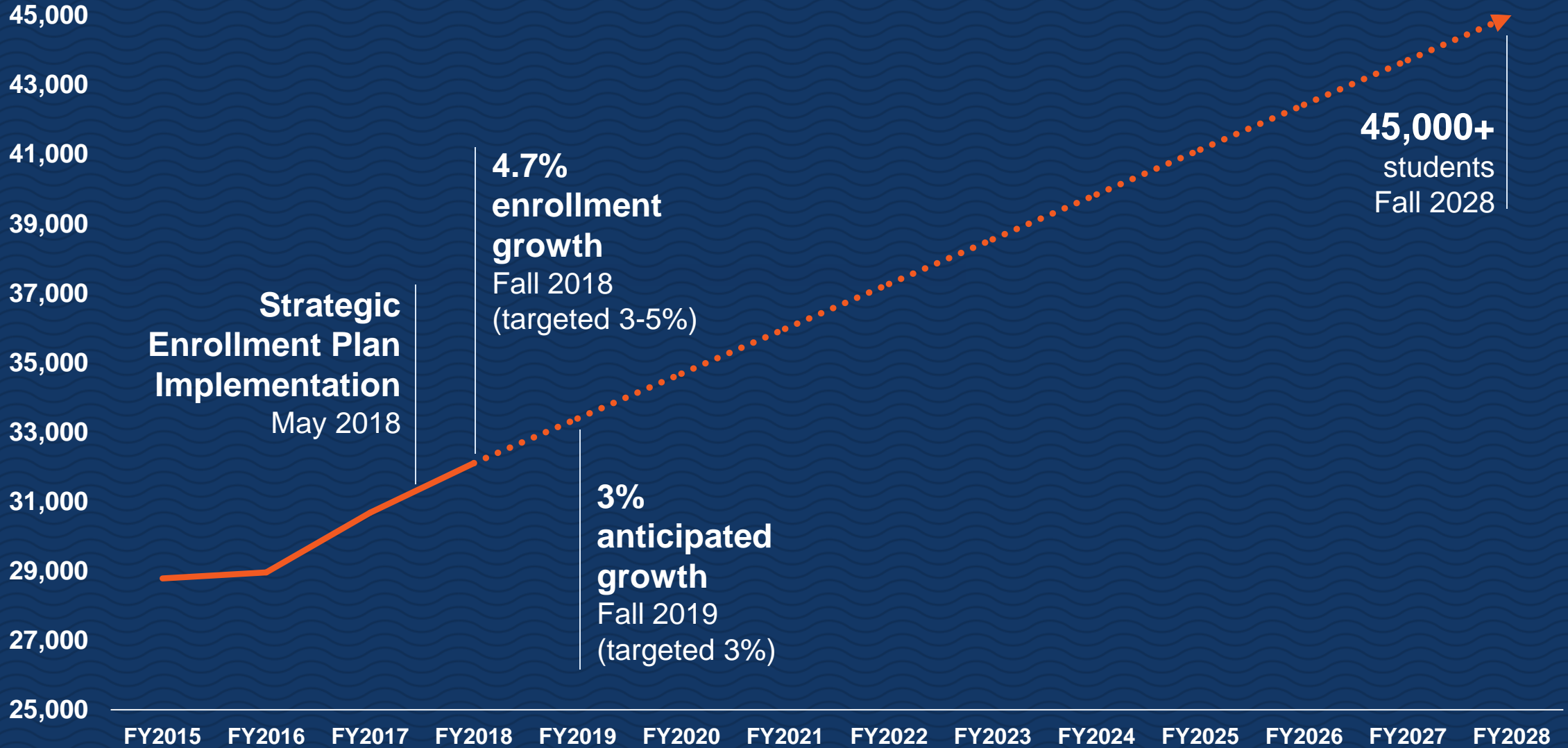
GROWTH &
INNOVATION

Strategic Enrollment

UTSA's plan for growth over the next decade fuels the university's ability to serve as a prosperity engine and graduate the world-engaged civic leaders of tomorrow



UTSA's Enrollment Growth



GROWTH &
INNOVATION



UTSA[®] Transfer Credit Calculator

Simplifies transfer admissions, making it
easy to determine which credits will
transfer to UTSA



The logo for UTSA (University of Texas at San Antonio) is located in the upper left corner. It consists of the letters "UTSA" in a white, bold, sans-serif font. Above the text are three wavy lines: the top one is orange, and the two below it are blue. The entire logo is set against a dark blue background with a white scalloped edge on the left side.

UTSA

Reimagining the Downtown Campus



Graham Weston

\$15 Million Gift

For UTSA's proposed
School of Data Science



Expanding the Downtown Campus

Land Transfers

Valued at \$13 Million

Parcels from the City of San Antonio and Bexar County for the National Security Collaboration Center, the School of Data Science and a new home for the College of Business



Urban Education Institute Foundational Gift

Finding solutions for San Antonio's
urban education challenges

\$2.0 million

RAISE[®]
YOUR HAND TEXAS
FOUNDATION



San Antonio River

Pearl

San Antonio Riverwalk

Hemisfair Park

St. Paul's Square

Alamodome

San Pedro Creek Cultural Park

Alameda Theater

Frost Tower

UTSA
Downtown Campus

Zona Cultural

San Antonio River
San Pedro Creek

H-E-B
Headquarters

Riverwalk

UTSA
Institute of Texan Cultures

Site of New
Federal Courthouse

San Antonio
Missions

Southtown

500 ft

Frio Street Properties
14.3 acres

Cattleman's Square Residential Tower

Continental Hotel Residences

Proposed Downtown Campus | 8.08 acres

Current Downtown Campus | 18.3 acres

Expanded College of Business

New National Security Collaboration Center

New School of Data Science

San Pedro Creek

Ten Year Plan 2018-2028

PHASE 1: 2018-2023

PHASE 2: 2023-2028





UTSA®

Strategic Initiatives

utsa.edu/strategicplan

Capital Campaign

Providing UTSA with the infrastructure and resources to achieve recognition as a model for student success and research discovery



Strategic Communications

A comprehensive, integrated marketing program that builds brand awareness and positive perceptions of UTSA



Incentivized Resource Management

Changing our approach to resource allocation and aligning budgets to the evolving mission and strategic priorities of the university while making the most efficient use of institutional funds



Classroom to Career

Providing transformative learning experiences such as internships, service learning, undergraduate research, study abroad and more



Human Health Planning Advisory Task Force

Exploring a new, student-centric college organizational structure that prepares students to pursue careers in modern healthcare settings

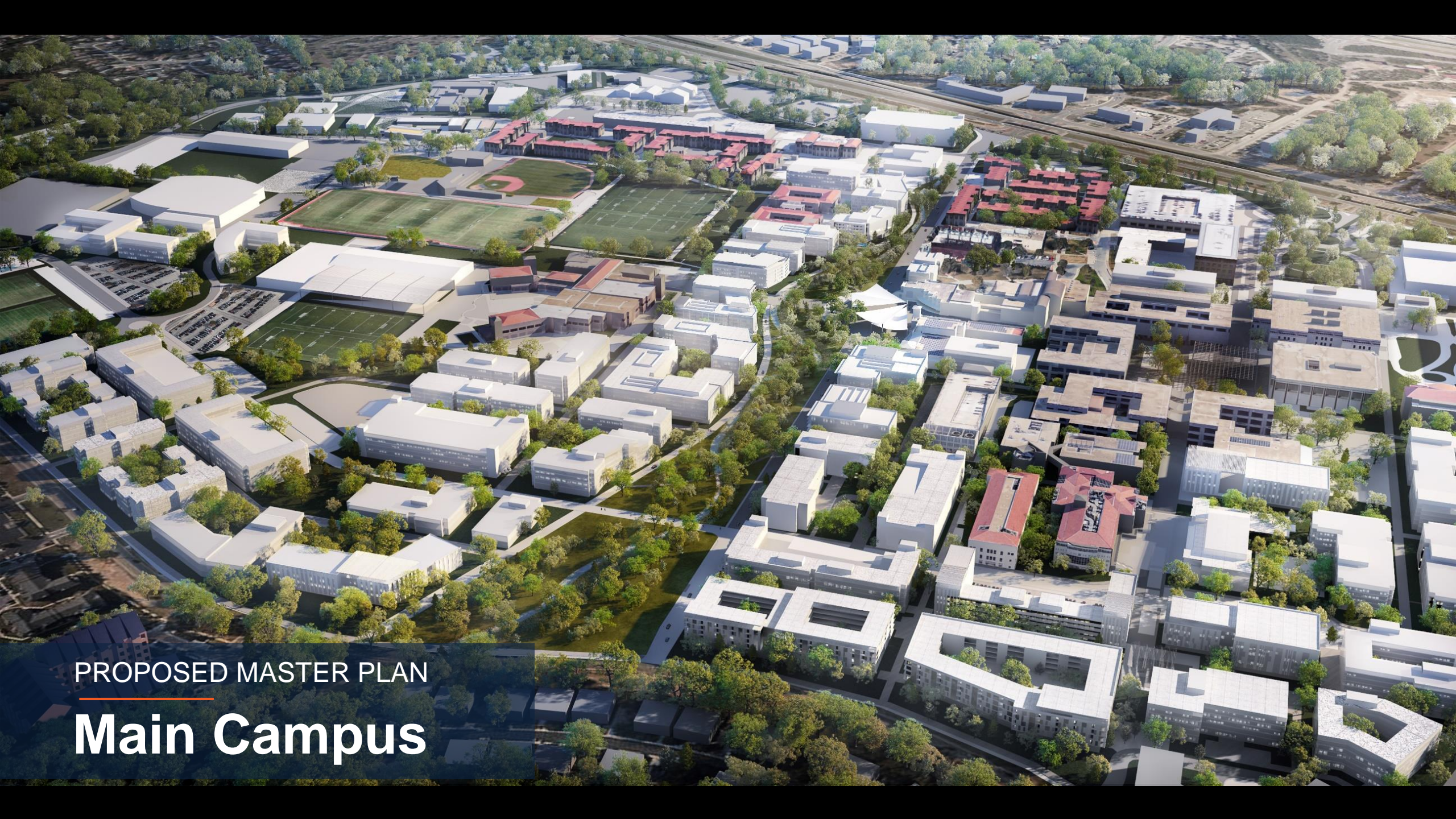


Campus Master Plan

Guiding the development of
UTSA's campuses over the
next decade

Page/





PROPOSED MASTER PLAN

Main Campus



PROPOSED MASTER PLAN

Downtown Campus

PROPOSED MASTER PLAN

Park West



Roadrunner Village

A vibrant new neighborhood featuring housing, dining and retail space that enhances the campus experience for the university community.



Honors Residential College

A new residence hall for the university's top students, bringing UTSA's Honors College to new levels of national prominence



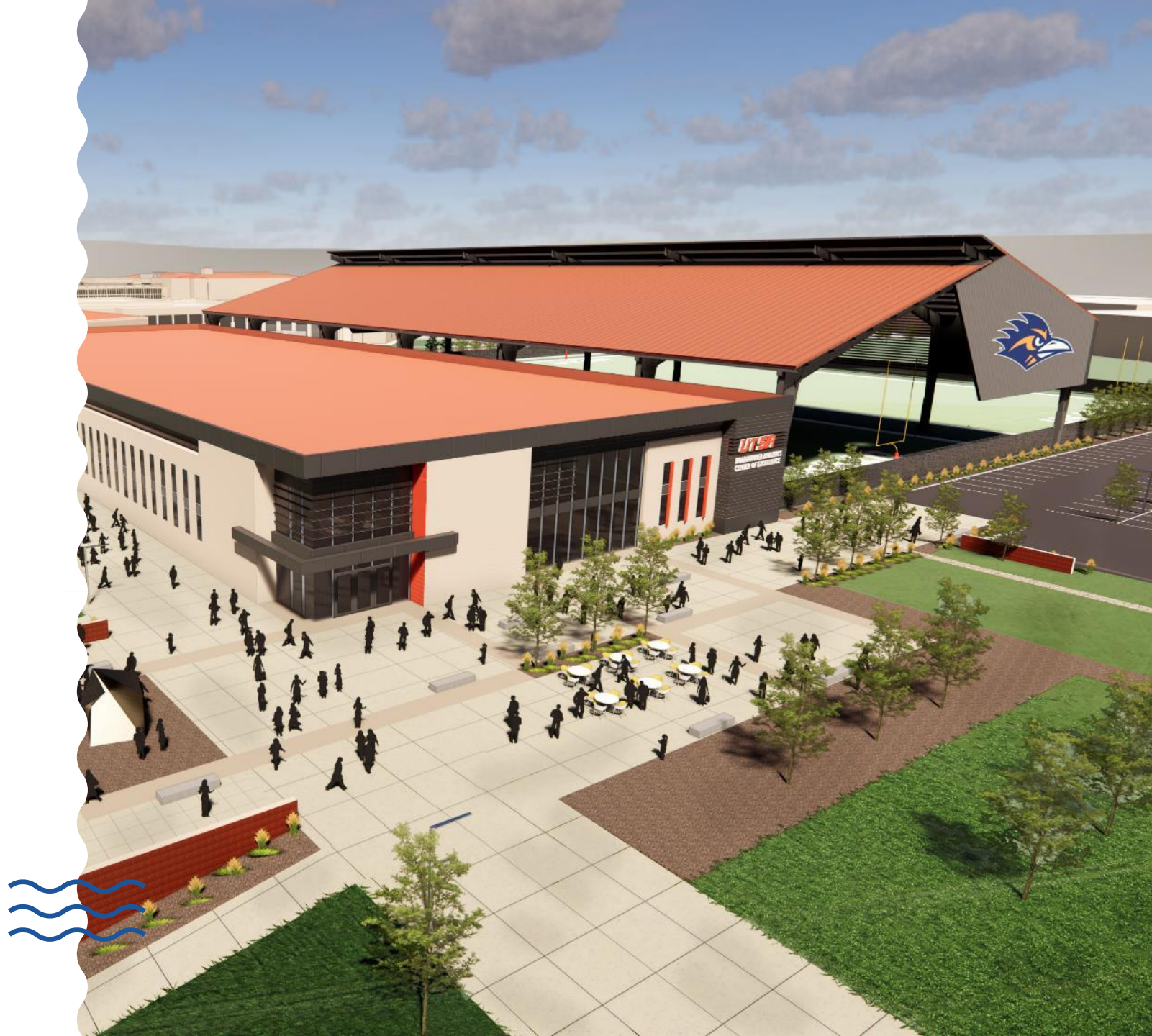
Guadalupe Hall

Designed with student success in mind, UTSA's newest residence hall will house 372 freshmen



Roadrunner Athletics Center of Excellence

A comprehensive multipurpose sports center to address student-athlete academic success, safety, performance and wellness



Cattleman's Square Residential Tower

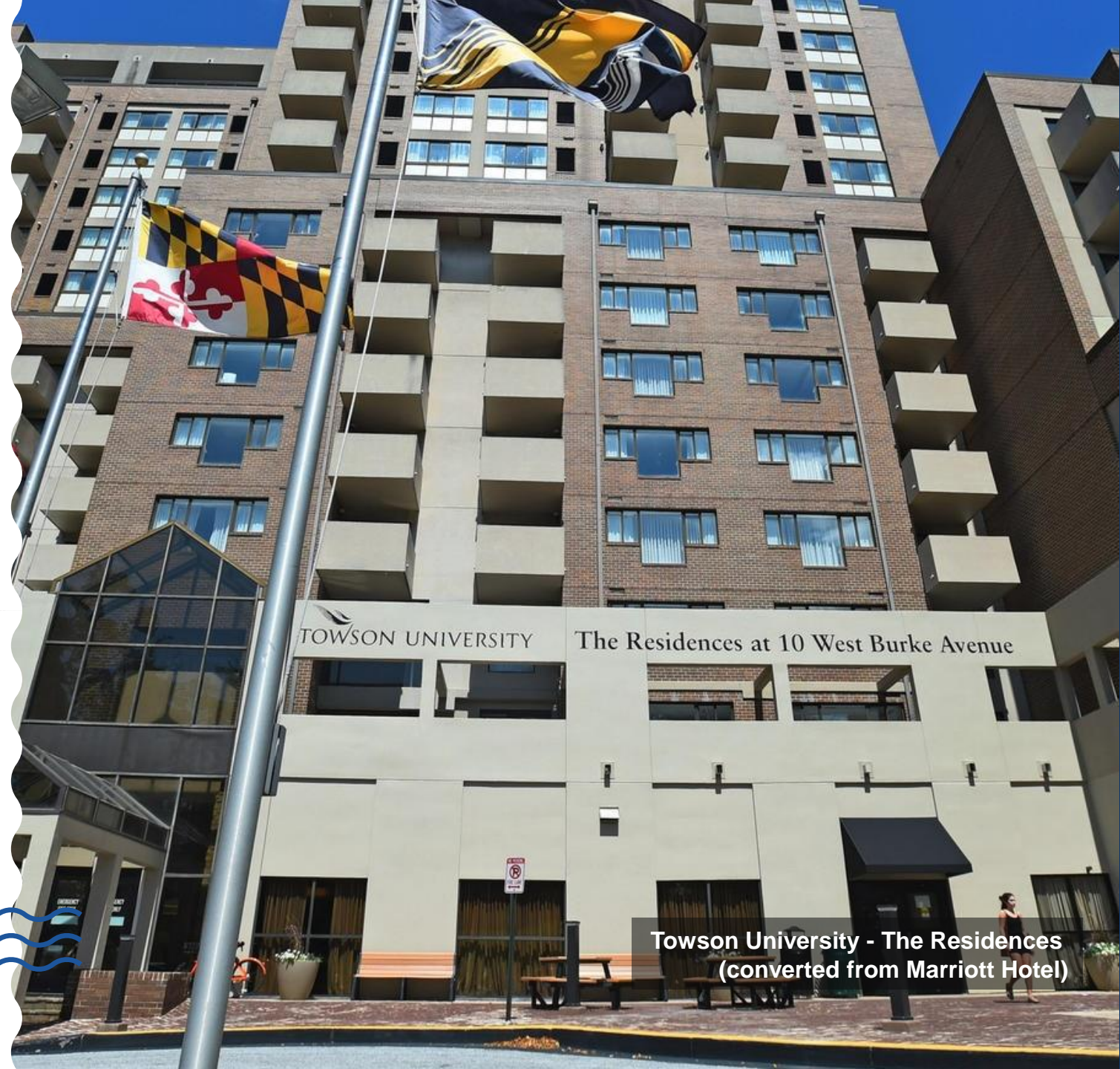
A mixed-use residential facility to house UTSA's growing population at the Downtown Campus



Arizona State University
Taylor Place Residence Hall

Continental Hotel Residences

A mixed-use residential facility to house UTSA's growing population at the Downtown Campus



Towson University - The Residences
(converted from Marriott Hotel)

School of Data Science

Uniting UTSA's talent and resources in cyberscience, data science and data management into one powerful new school



Preliminary design rendering for UTSA's new National Security Collaboration Center and School of Data Science | **Jacobs/Overland**

National Security Collaboration Center

Solving the nation's greatest cybersecurity threats



Preliminary design rendering for UTSA's new National Security Collaboration Center and School of Data Science | **Jacobs/Overland**

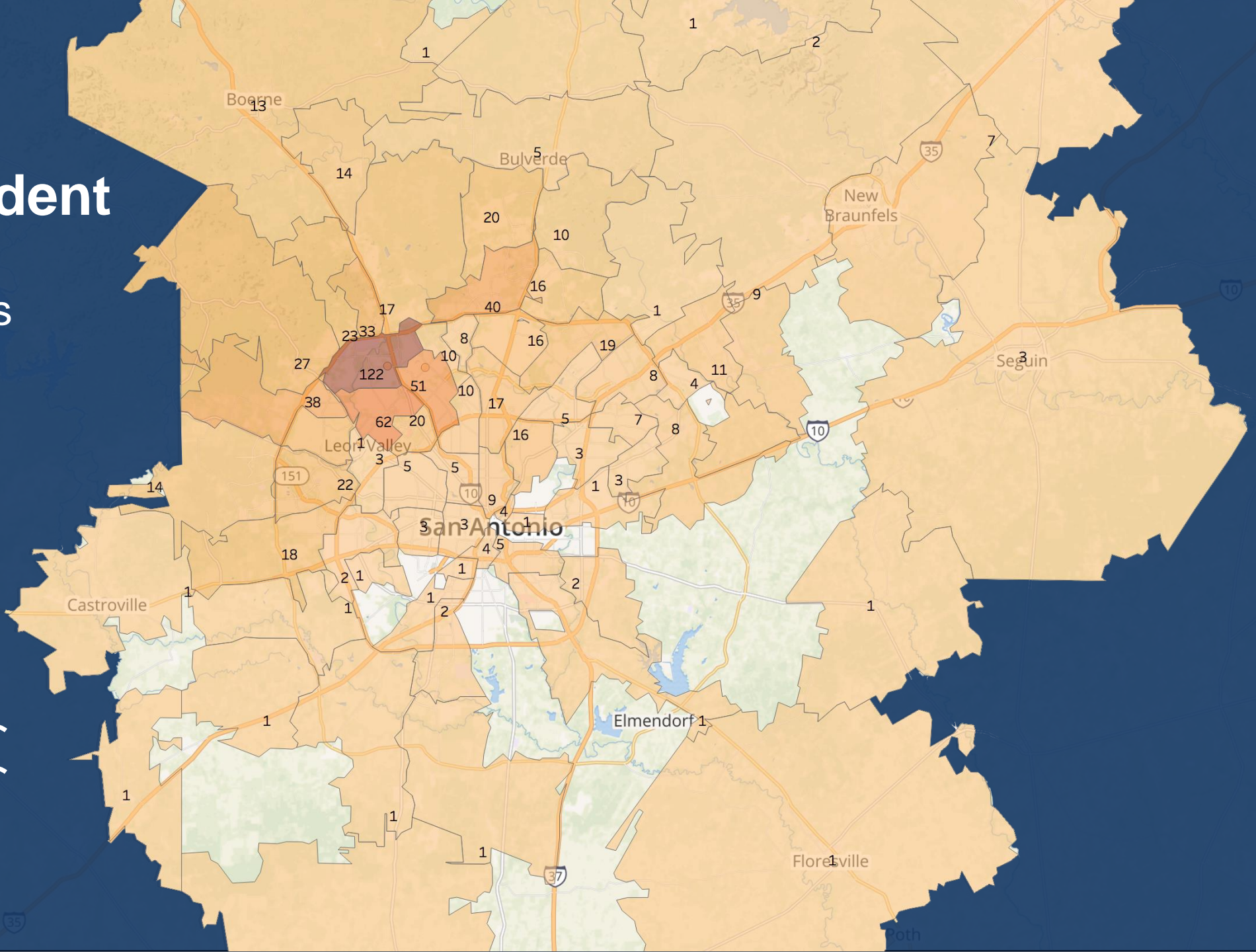
Expanding the College of Business

A second location to accommodate rapid enrollment growth, situated in the heart of San Antonio's business community



Portland State University
School of Business

Unmet Demand
**Graduate Student
Residency**
College of Business



Institute of Texan Cultures

A renewed focus to align more directly with the educational mission of UTSA





Questions?
Thank you!

Feedback
bit.ly/campusconvo

