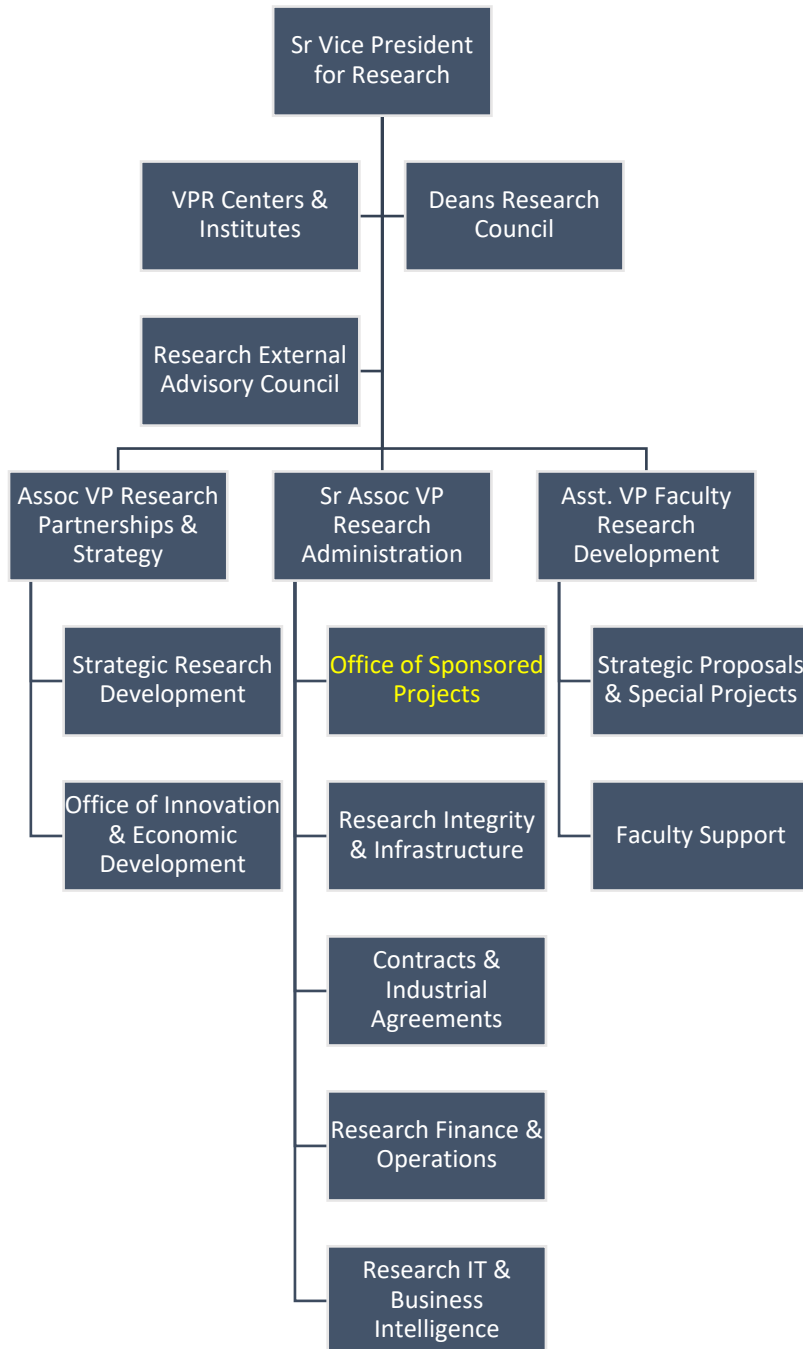


UTSA Office of Research

Three primary areas in Office of Research align with strategic destinations:



Strategic Destinations	UTSA's R1 Culture
UTSA will be a model for student success	<i>Develop thought leaders through Faculty Research Development – inspiring and mentoring the next generation of experts.</i>
UTSA will be a great public research university	<i>Grow research through Partnerships and Strategy – to reach greatness.</i>
UTSA will be an innovative place to work, learn and discover	<i>Model service excellence in Research Administration – so that researchers are inspired to work innovatively to learn and discover.</i>

The largest structural change occurs within *the office of sponsored projects*, where pre- and post-award services are combined, staff are cross-trained in both areas, and there will be a central office that interacts directly with funding agencies as well as research administrative staff embedded in Colleges.