

UTSA[®]

The University of Texas
at San Antonio[™]

A Vision for
**UTSA's
Downtown
Campus**

Dr. Taylor Eighmy
April 17, 2019




Campus Master Plan


Guiding the development
of UTSA's campuses
over the next decade

Page/



San Antonio Landscape

UTSA 
Park West Campus

UTSA 
Main Campus

1604

I-10

**UT Health
San Antonio** 

281

410

**Texas Biomedical
Research Institute** 

 **Southwest
Research Institute**

 **Brooke Army
Medical Center**

 **Pearl**

UTSA
Downtown Campus

UTSA
Institute of Texan Cultures

90

**San Antonio
Missions** 

3 km
2 mi

Downtown San Antonio

San Pedro Creek Cultural Park/Project

San Antonio Riverwalk

Zona Cultural

UTSA Downtown Campus

New Federal Courthouse

Alameda Theater

Frost Tower

Market Square

Riverwalk

Hemisfair Park

St. Paul Square

H-E-B Headquarters

San Antonio Missions

UTSA Institute of Texan Cultures

Alamodome

Southtown



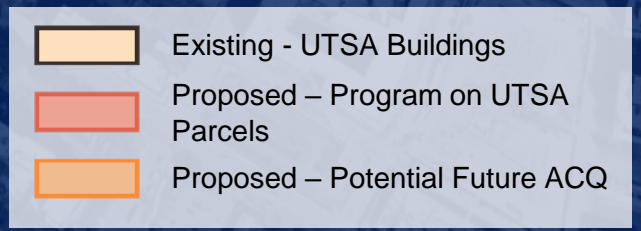
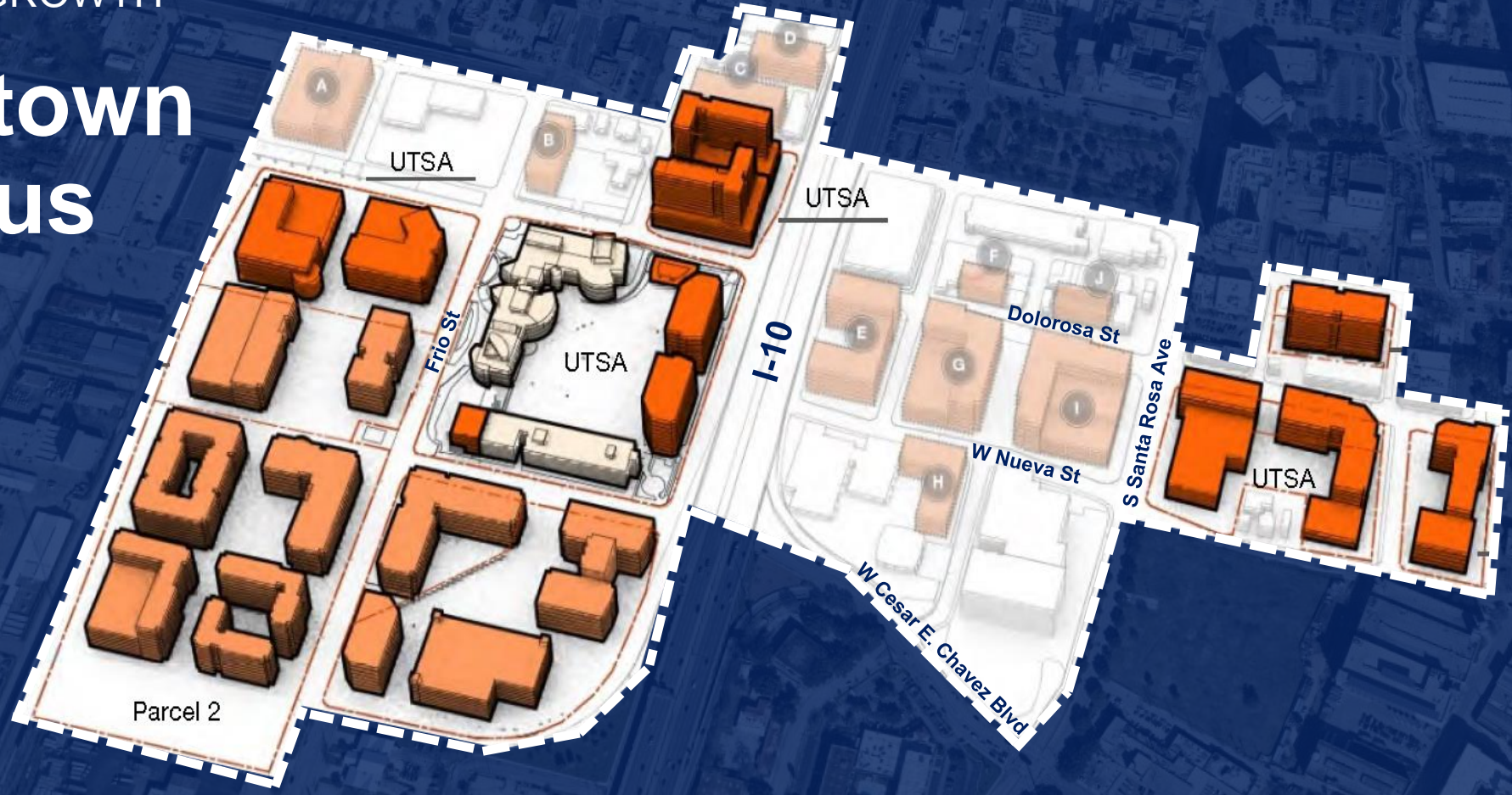
Imagine

- Autonomous, residential campus
- >15,000 students
- >1,000 faculty
- >1,000 staff
- 4+ colleges
- 2+ new schools
- 2+ new research institutes
- Government-University-Industry partnership
- A fully distributed campus, like Arizona State's downtown Phoenix campus
- Dramatic impact to the future of San Antonio
- Dramatic impact to Carnegie R1, NRUF status
- Large economic development impact
- Critical corporate recruitment impact
- Deep ties to Tech Corridor, new Federal Courthouse
- Catalyzing development of the Near West Side

**UTSA's
Downtown
Campus
in 10 Years**

POTENTIAL GROWTH

Downtown Campus



Frio Street Properties
14.3 acres

Cattleman's Square Residential Tower

Continental Hotel Residences

Proposed Downtown Campus | 8.08 acres

Current Downtown Campus | 18.3 acres

Expanded College of Business

New National Security Collaboration Center

New School of Data Science

San Pedro Creek

Ten Year Plan 2018-2028

PHASE 1: 2018-2023

PHASE 2: 2023-2028



School of Data Science

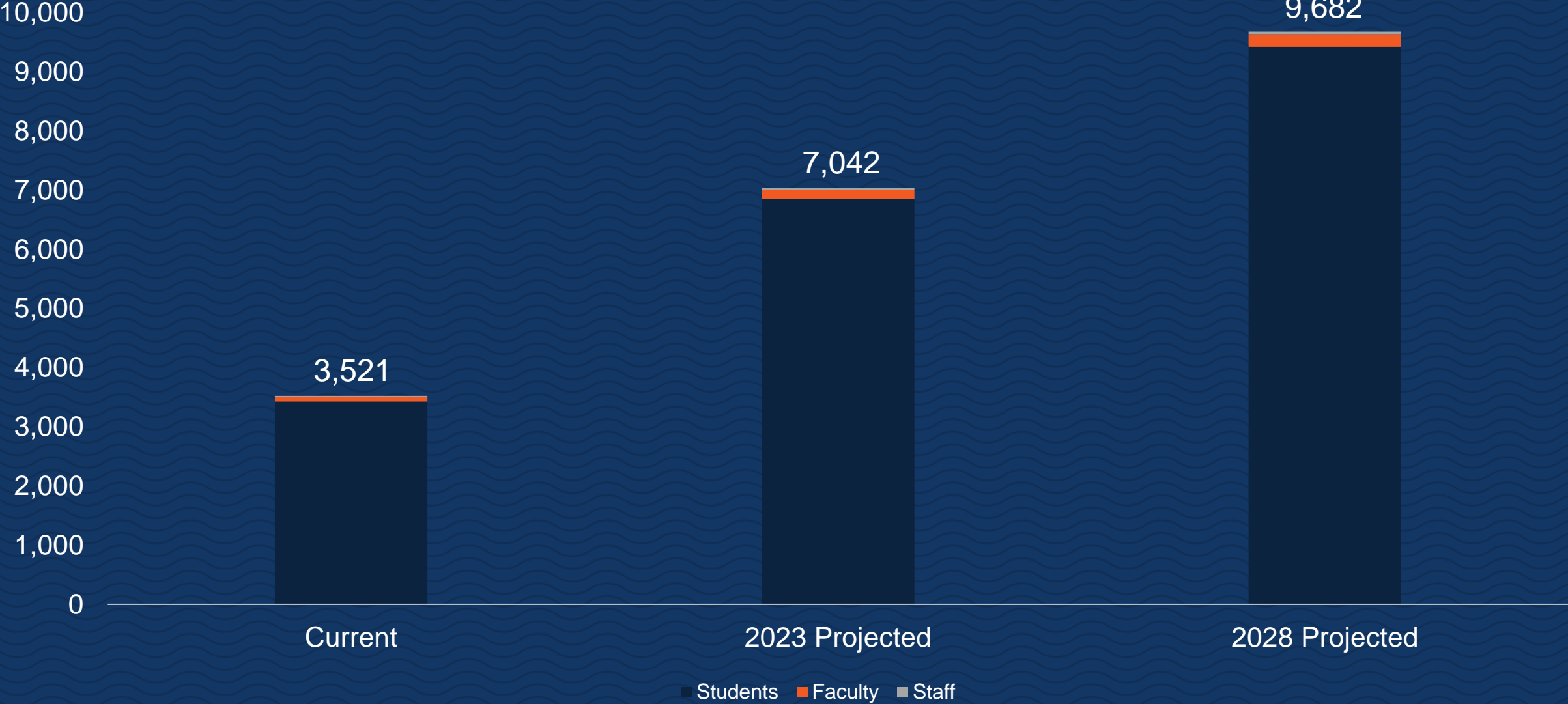
Uniting UTSA's talent and resources in cyberscience, data science and data management into one powerful new school



Columbia University
Data Sciences Institute

School of Data Science

Projected 5 and 10 Year Total Population

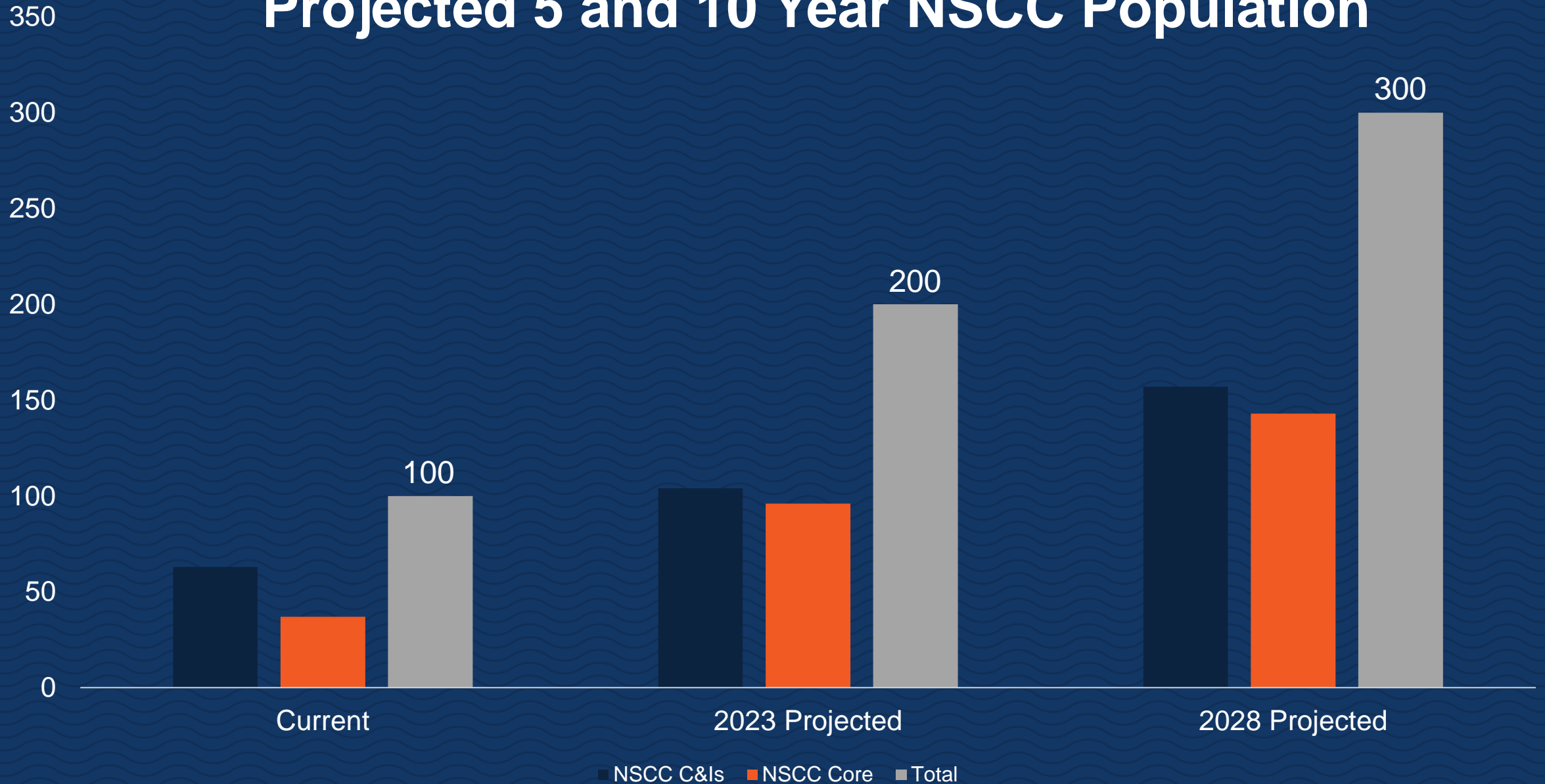


National Security Collaboration Center

Solving the nation's
greatest cybersecurity
threats



Projected 5 and 10 Year NSCC Population



Expanding the College of Business

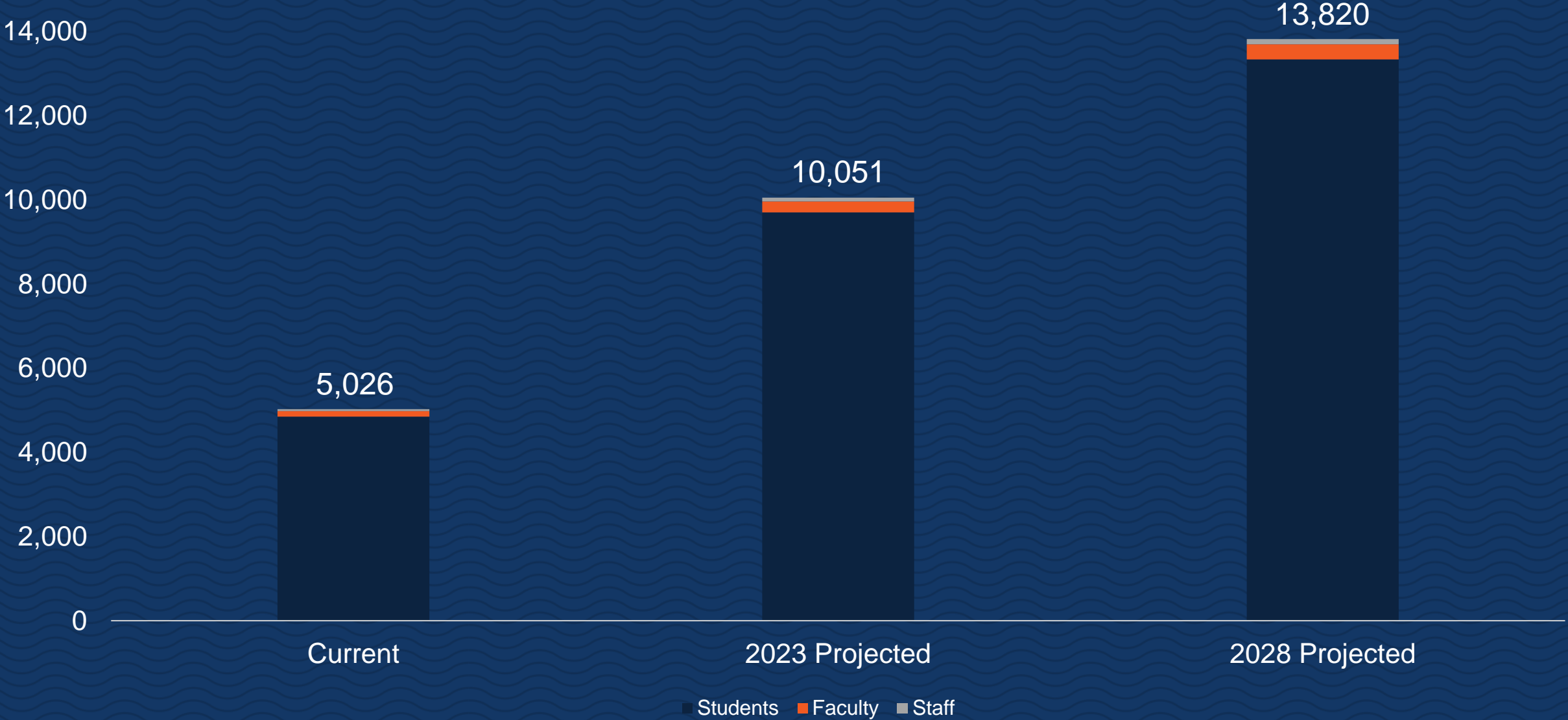
A second location to accommodate rapid enrollment growth, situated in the heart of San Antonio's business community



Portland State University
School of Business

College of Business

Projected 5 and 10 Year Total Population



Cattleman's Square Residential Tower

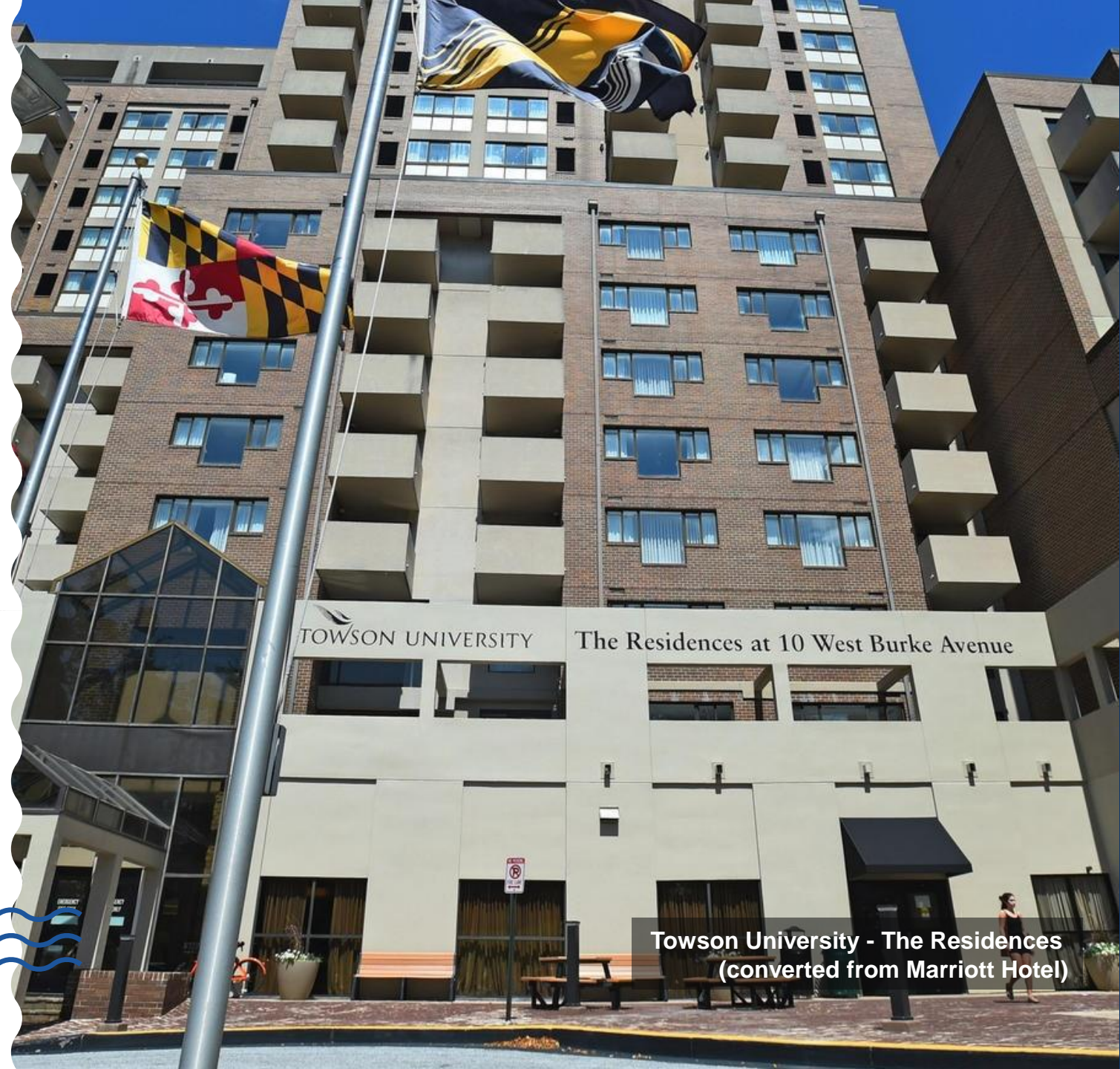
A mixed-use residential facility to house UTSA's growing population at the Downtown Campus



Arizona State University
Taylor Place Residence Hall

Continental Hotel Residences

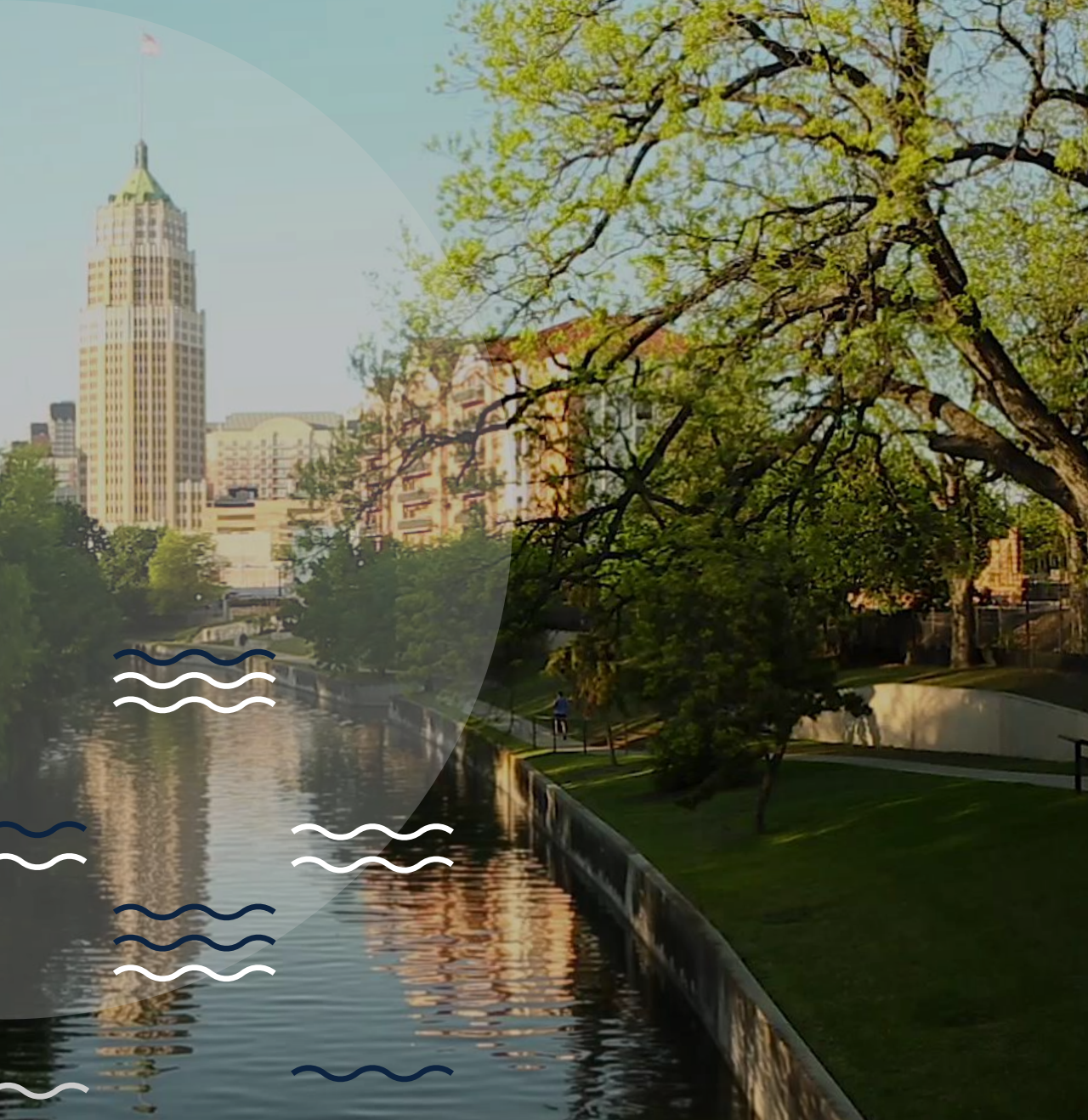
A mixed-use residential facility to house UTSA's growing population at the Downtown Campus



Towson University - The Residences
(converted from Marriott Hotel)

UTSA[®]

The University of Texas
at San Antonio[™]



Questions?
Thank you!