

UTSA Academic Innovation

Chat GPT and Generative AI

Faculty Senate

Dr. Melissa Vito, Dr. Claudia Arcolin

March 9, 2023



What is ChatGPT?

- ChatGPT is an **AI-powered conversational agent**, or chatbot, developed by OpenAI. It uses a large neural network called GPT (Generative Pre-trained Transformer) that has been trained on vast amounts of text data to **generate human-like responses to user input**.
- **Academic Innovation is guided by principles of providing context, resources and practical suggestions for faculty about the use of ChatGPT and generative AI in teaching and learning.**

Can you tell me in 20 words the key elements of James Joyce's work?

Joyce's work features modernist experimentation, stream-of-consciousness narrative, Dublin-focused themes, and intricate wordplay exploring language, history, and identity.

Can you give me a definition of generative AI in 50 words and what are some of the most relevant tools for teaching and learning?

Generative AI is a type of artificial intelligence that creates new data, such as images, videos, or text, rather than simply classifying or predicting existing data. Some relevant tools for teaching and learning generative AI include TensorFlow, PyTorch, Keras, GPT-3, and StyleGAN. These tools allow users to develop and experiment with generative AI models and techniques.

Pulse-checking UTSA faculty

Academic Innovation opened a pulse check survey on January 26 to collect faculty perspectives about generative AI.

- **Positive Results:**

- The majority of faculty members are excited about the potential of ChatGPT and other generative AI tools as a teaching and learning tool.

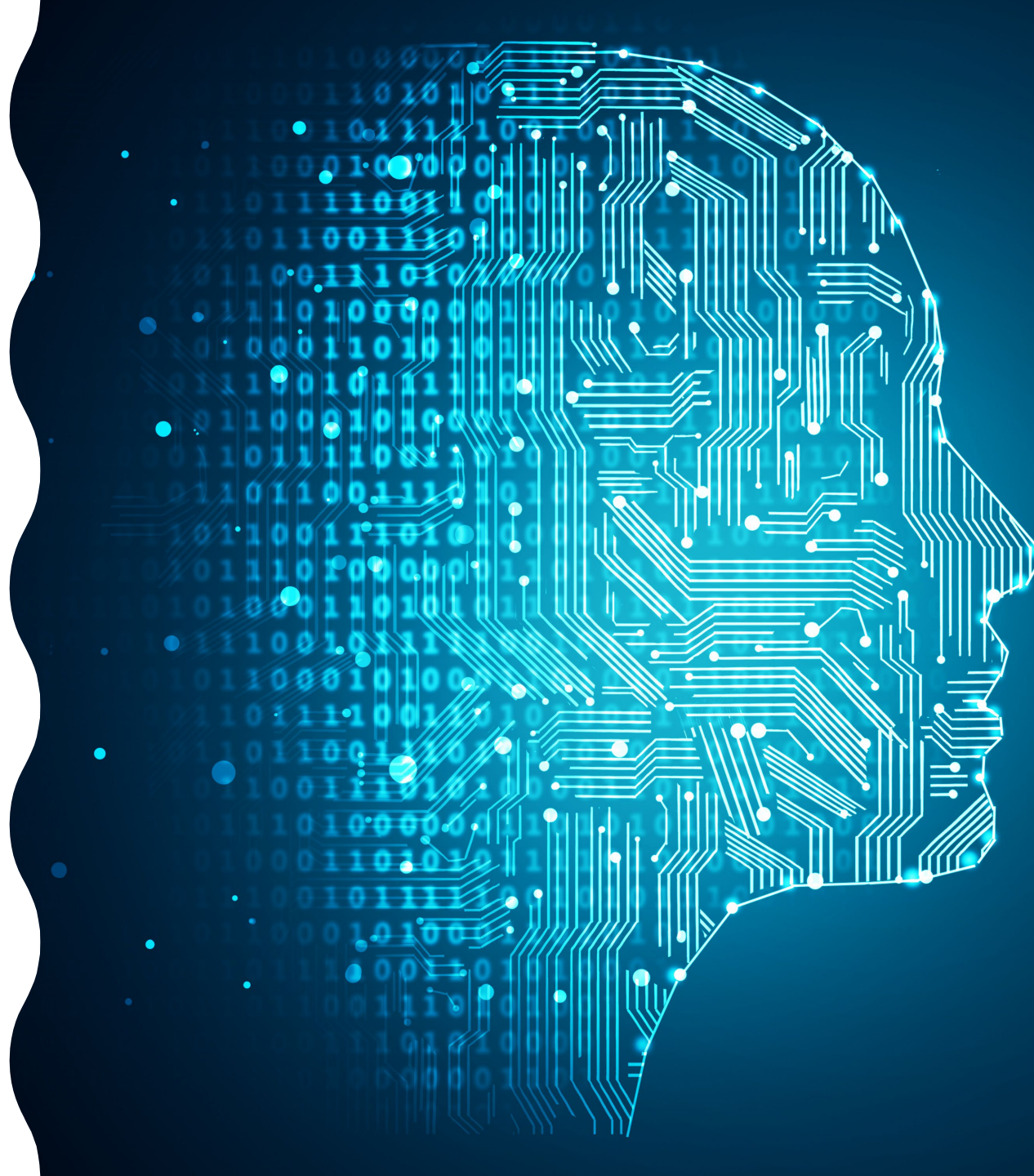
- **Challenges:**

- Faculty expressed some concerns about the student learning experience, and they want to learn more about generative AI before embracing its use for teaching and learning.



Resources for Faculty

- Dedicated generative AI webpage with resources for faculty
- Facilitating a **generative AI Faculty Peer Learning Community** sharing practical suggestions on how to use generative AI as a teaching and learning tool.
- Offering a **series of workshops** about the most pressing topics related to the use of these tools.



Faculty workshops

A series of workshops and pop-ups about generative AI:

What is ChatGPT

Ryan McPherson,
Communication

How Artificial Intelligence
will change teaching and
learning?

Offered on 2/2/2023

Pathways of Intersection

Dr. Bettyjo Bouchey, VP
Digital Strategy, NLU

What are the
intersections between AI
and Higher Ed?

Offered on 2/16/23

Miscalculation of AI

Cindy Roberts and
Matthew Schurmann,
Mathematics

How to use ChatGPT for
productive student
engagement?

Live on 4/16/23

More Topics Coming Soon!

Faculty and Student Panel
Employers

Focus on 5 Major Areas

The Generative AI Peer Learning Network current areas of exploration are:

- **CREATIVITY:** how faculty can design assessments that release the human creativity, leverage human experience, and differentiate human artifacts from generative AI-created ones.
- **DIGITAL/DATA LITERACY:** how faculty can help students understand, evaluate, and effectively use digital data and tools to create, analyze, and communicate information using AI-generated content, and to understand the ethical and social implications of using such technology.
- **TRUST/ACCURACY:** how faculty can help students embrace academic integrity, check the information they find through generative AI, and build their own knowledge.
- **EQUITY/BIAS:** how faculty can help students intercept biases and inequalities, and at the same time, leverage the potential of a 24/7 learning assistant.
- **CLASSROOM TO CAREER:** how to assist students and faculty with expected job implications, explore the future of work, and examine the impacts on different industries as a result of the AI revolution.

Questions?

- This is a rapidly-growing, quickly-evolving topic.
- We welcome your input, suggestions, and questions.

UTSA[®]

Academic
Innovation