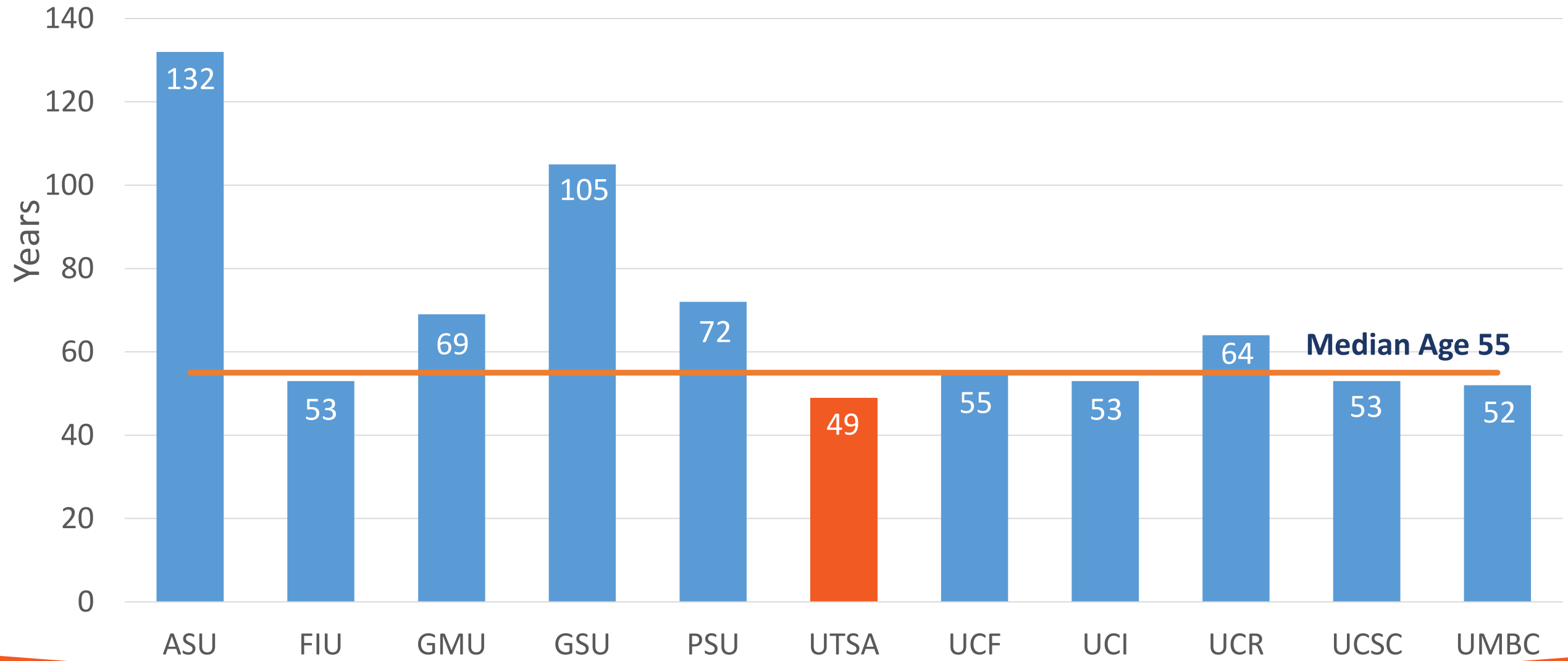
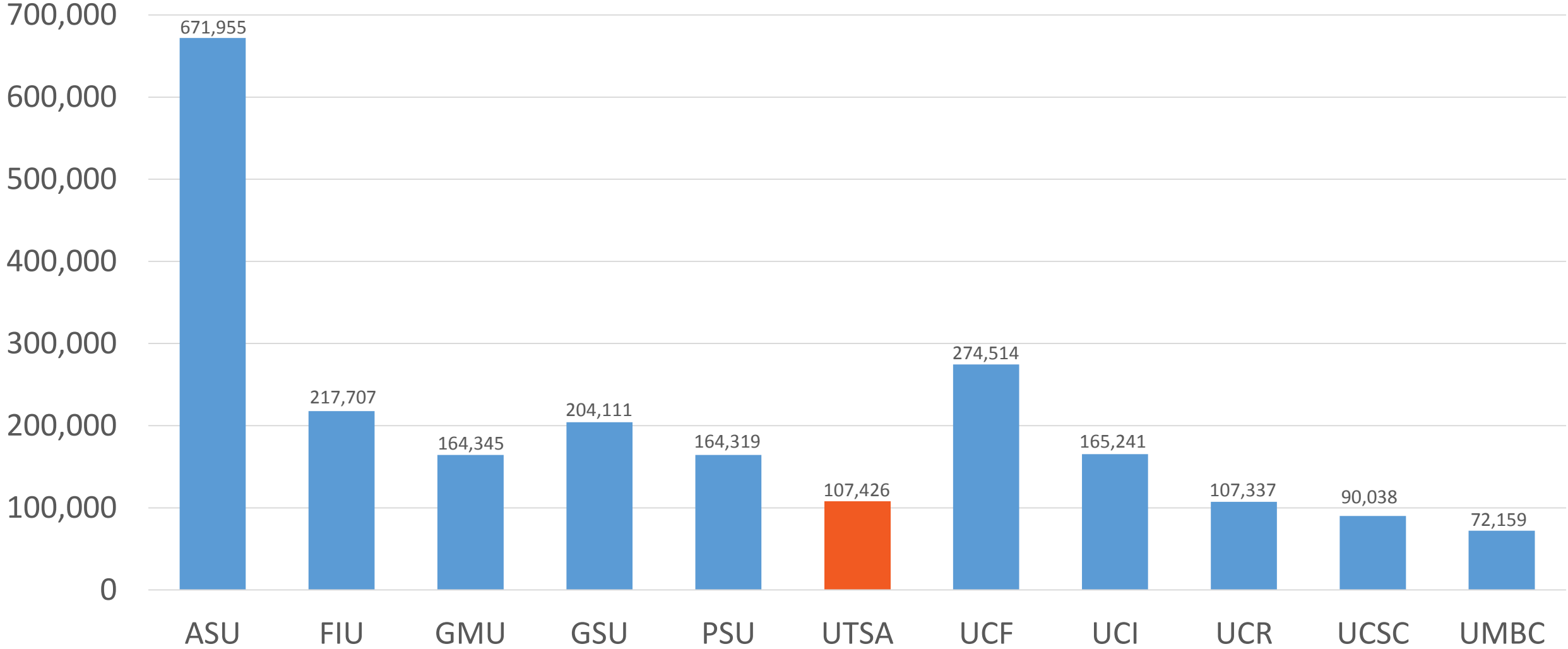


Age of University as of 2018

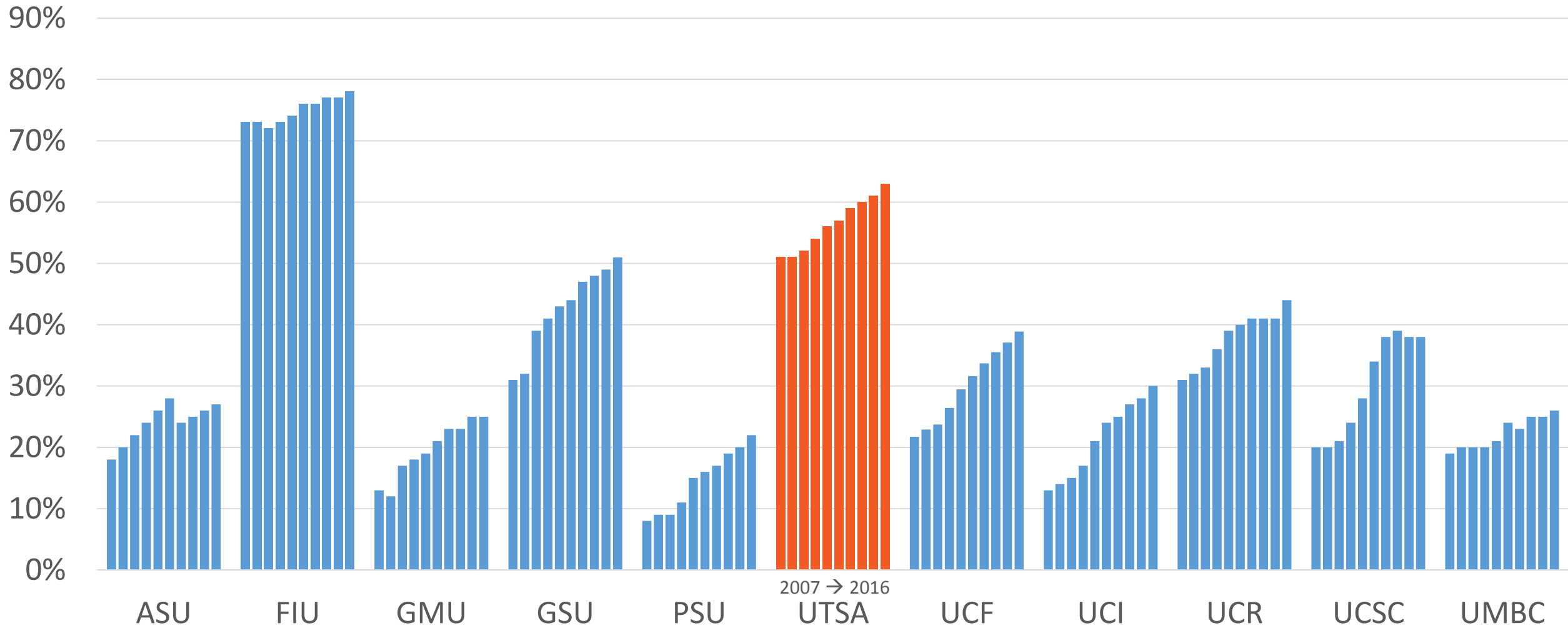


Total Number of Alumni by University as of 2018

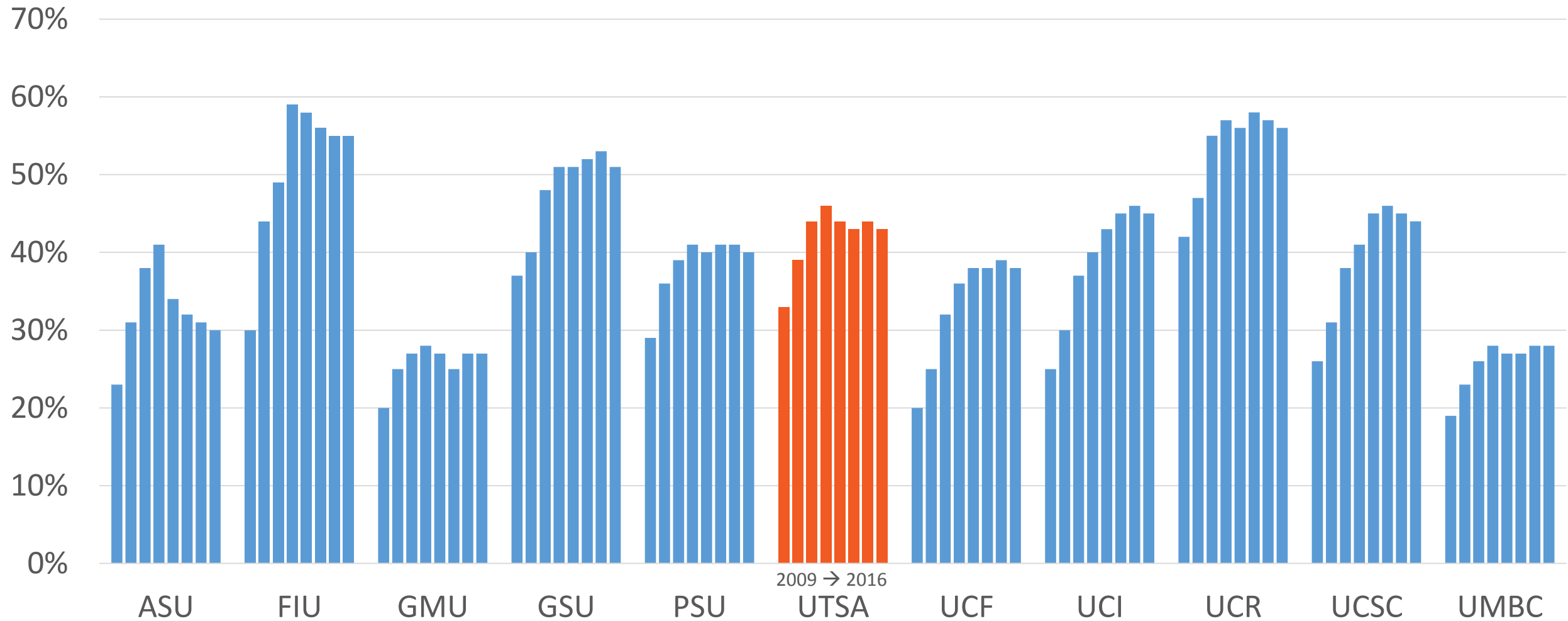


Source: Voluntary Support of Education (VSE)

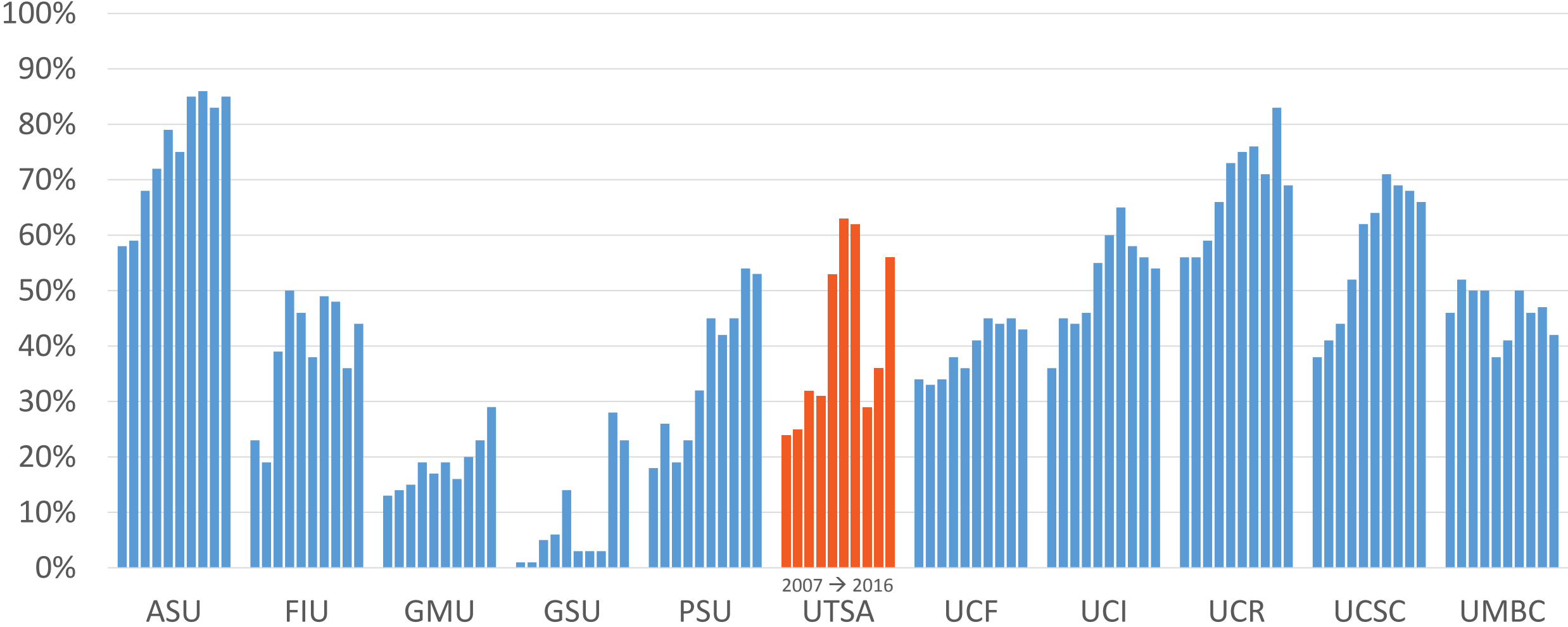
Under-represented Minority Enrollment by University Annually from 2007-2016



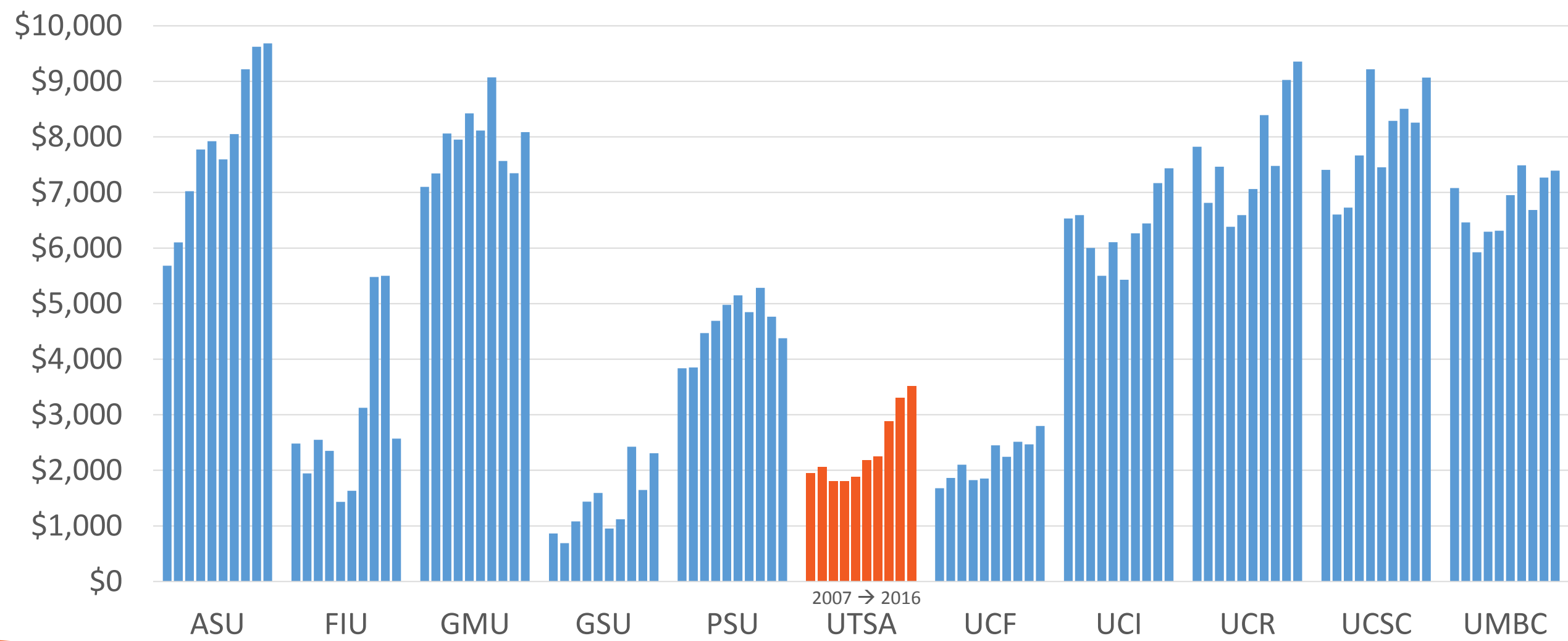
Percent of Undergraduate Students Awarded Pell Grants Annually by University from 2009-2016



First-time-Full-time Cohort Awarded Institutional Grant Aid Annually by University from 2007-2016

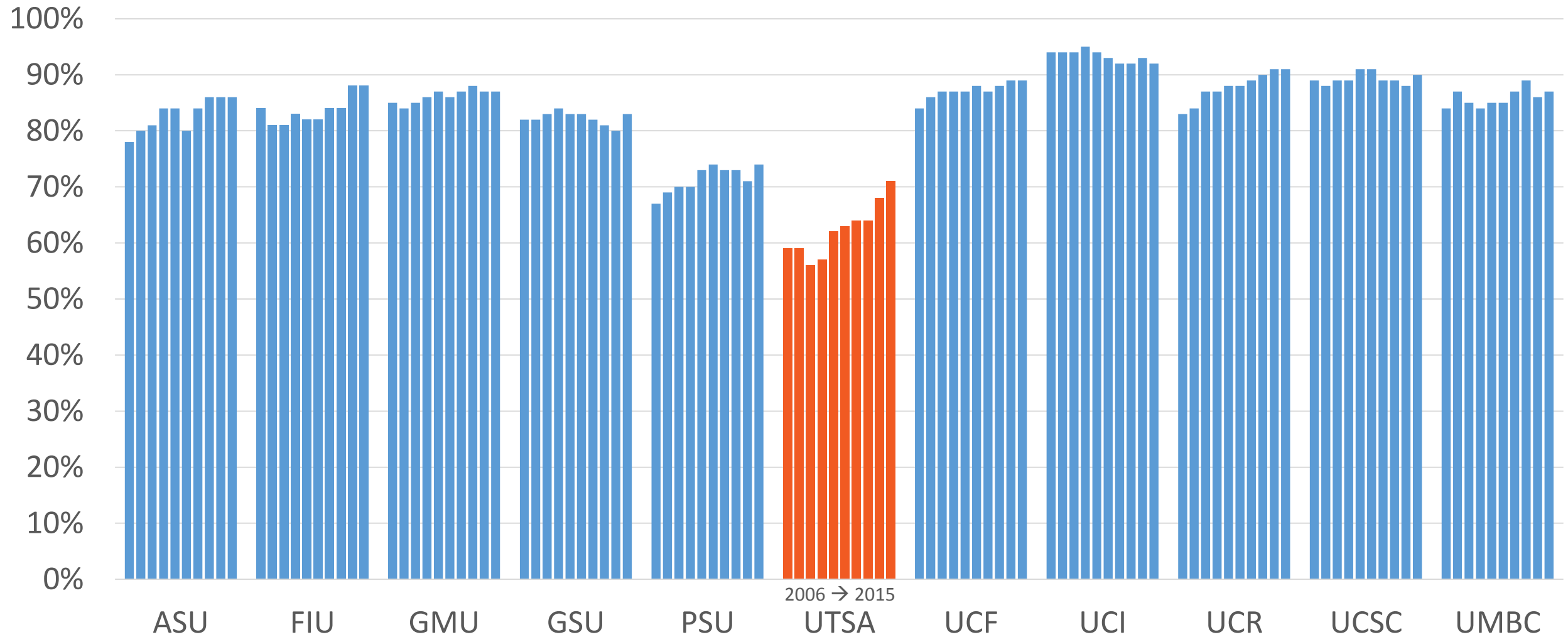


Average Institutional Grant Aid Awarded to First-time-Full-time Students Annually by University from 2007-2016



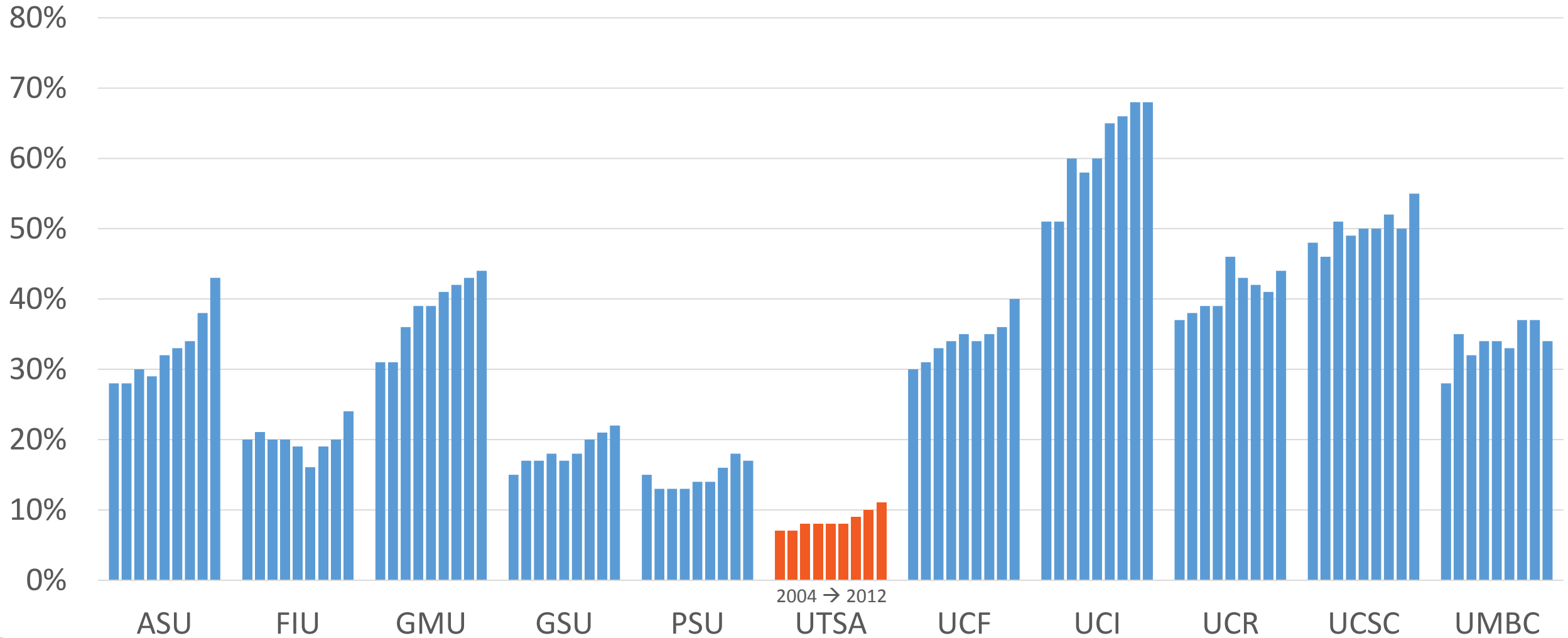
One-year Retention Rates

Annually by University from 2006-2015



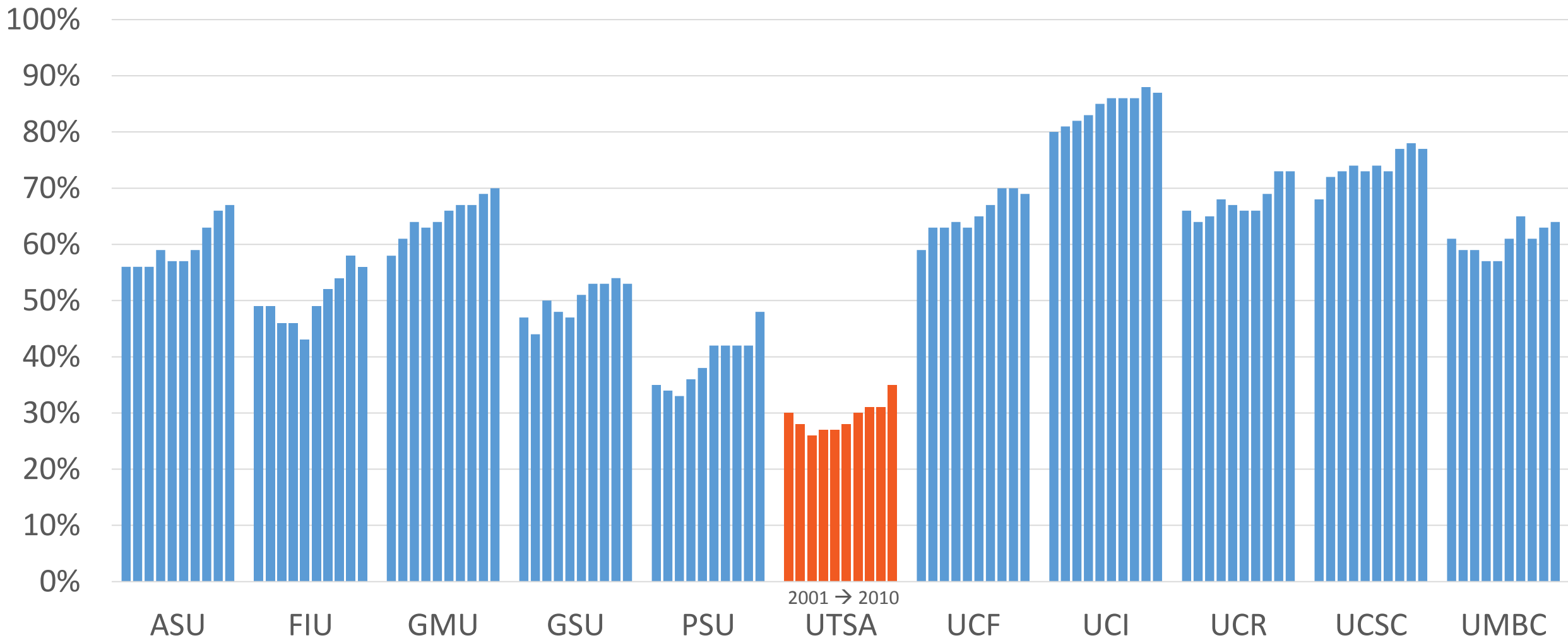
Four-year Graduation Rates

Annually by University from 2004-2012

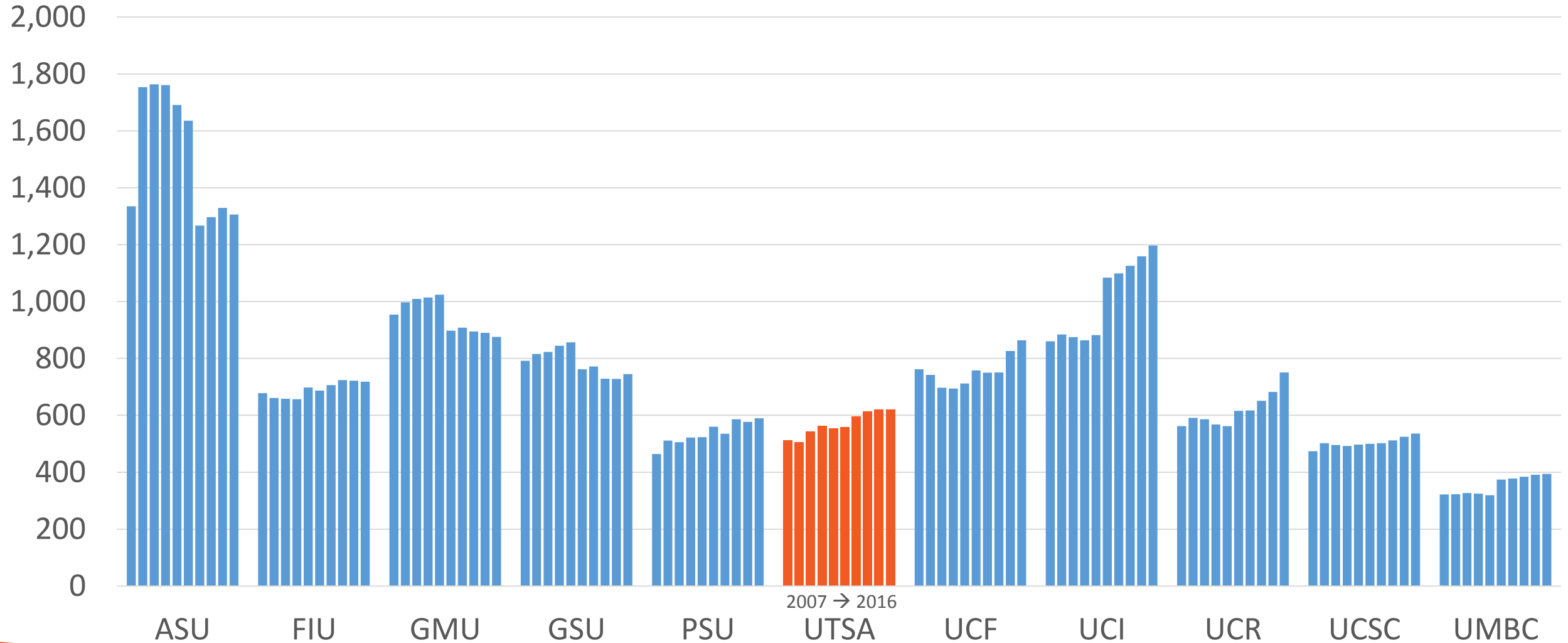


Six-year Graduation Rates

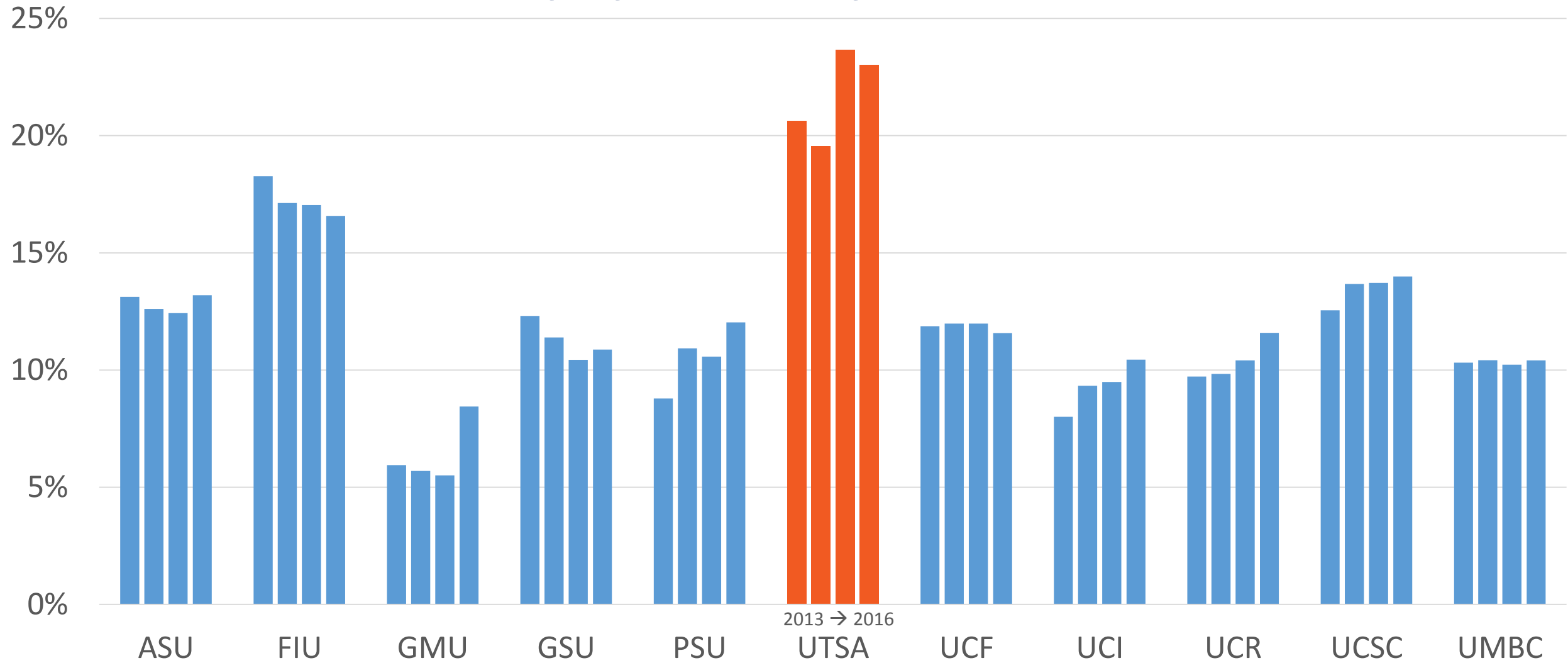
Annually by University from 2001-2010



Headcount of Tenure and Tenure Track Faculty Annually by University from 2007-2016

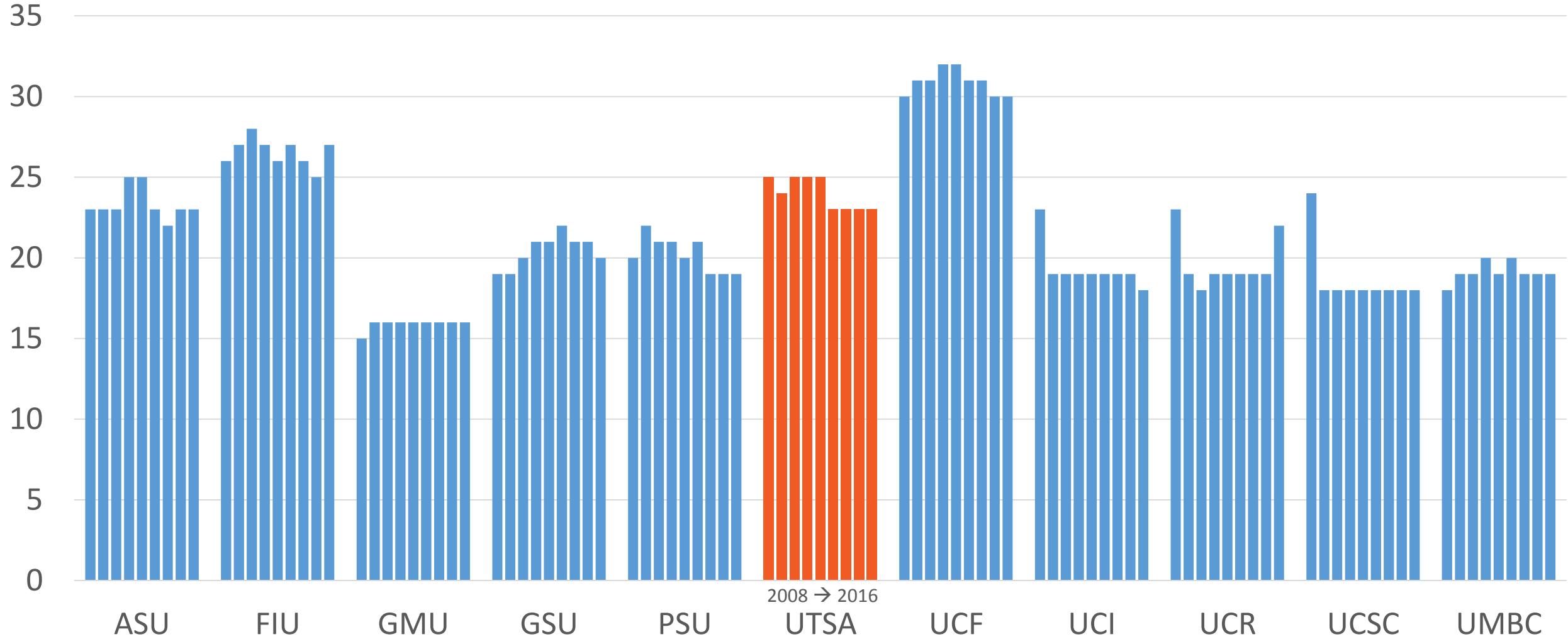


Tenure and Tenure Track Under-represented Minority Faculty Annually by University from 2013-2016

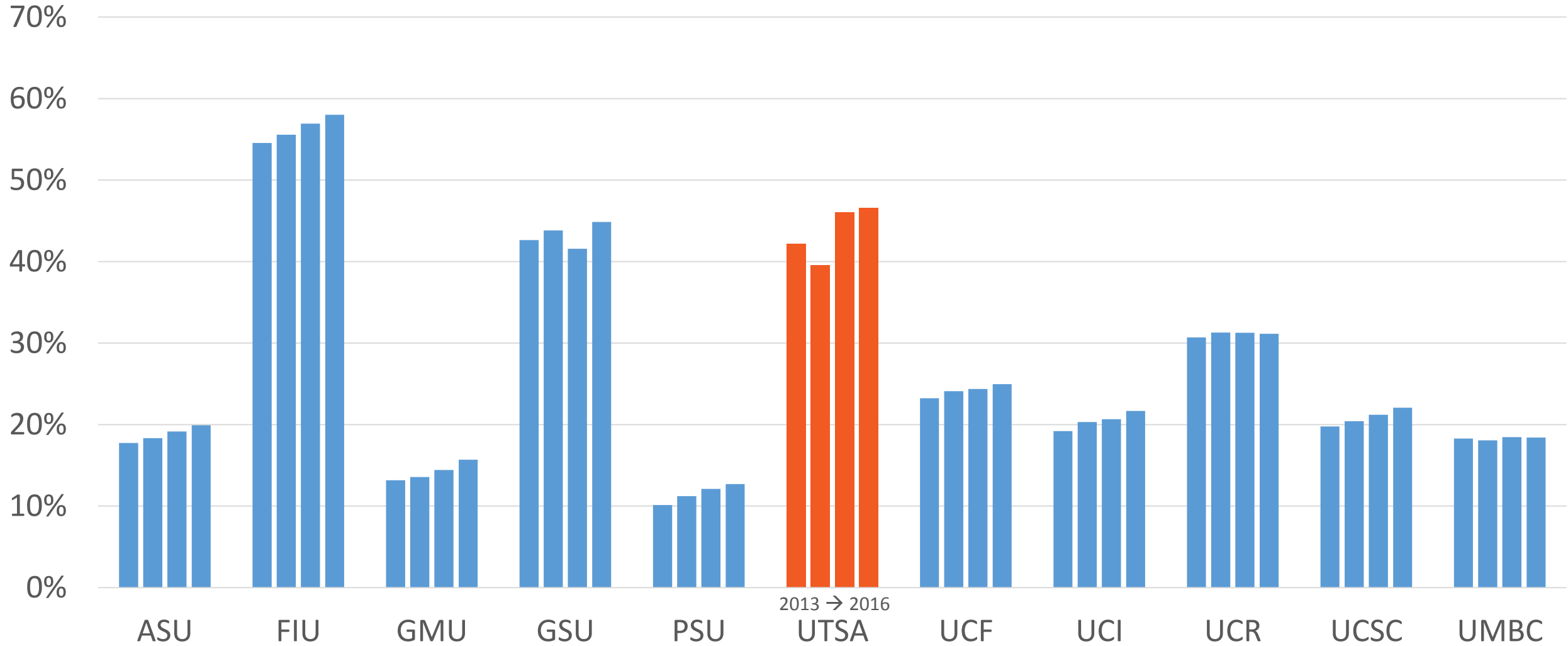


Student-to-Faculty Ratio

Annually by University from 2008-2016

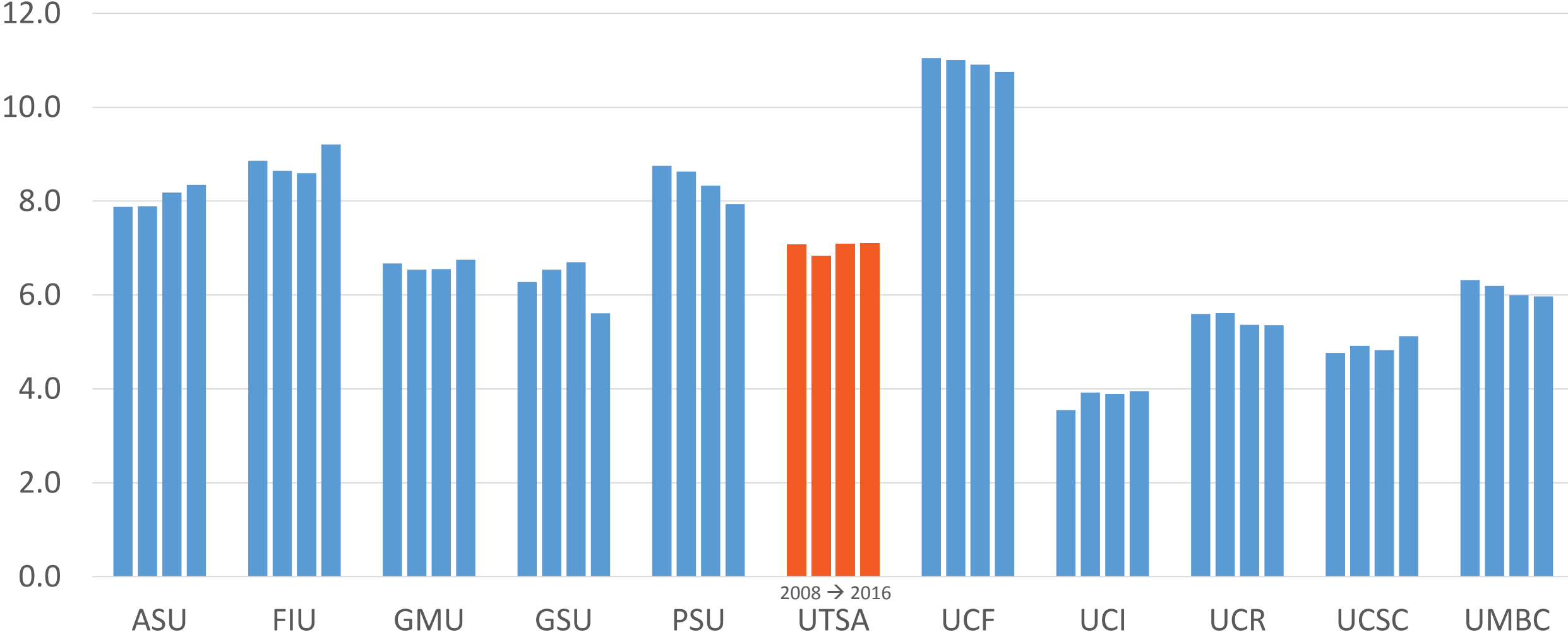


Under-represented Minority Staff Annually by University from 2013-2016

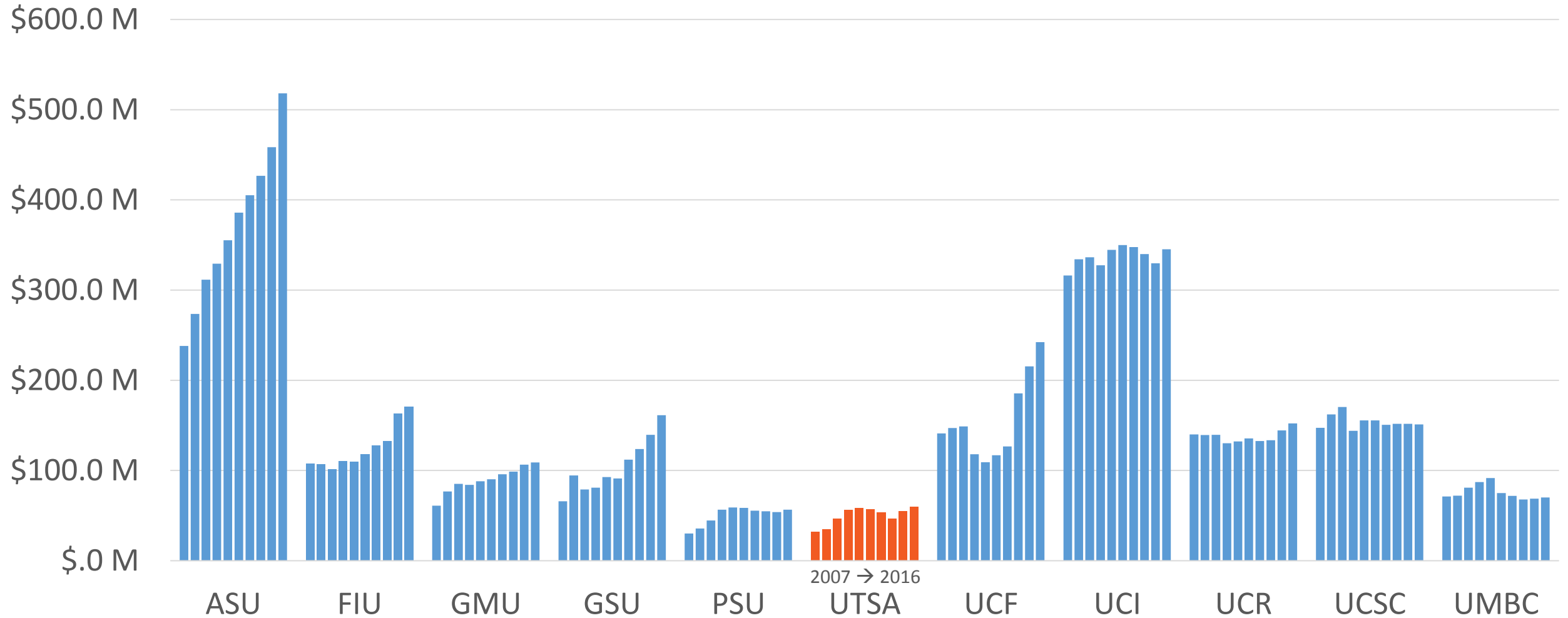


Student-to-Staff Ratio

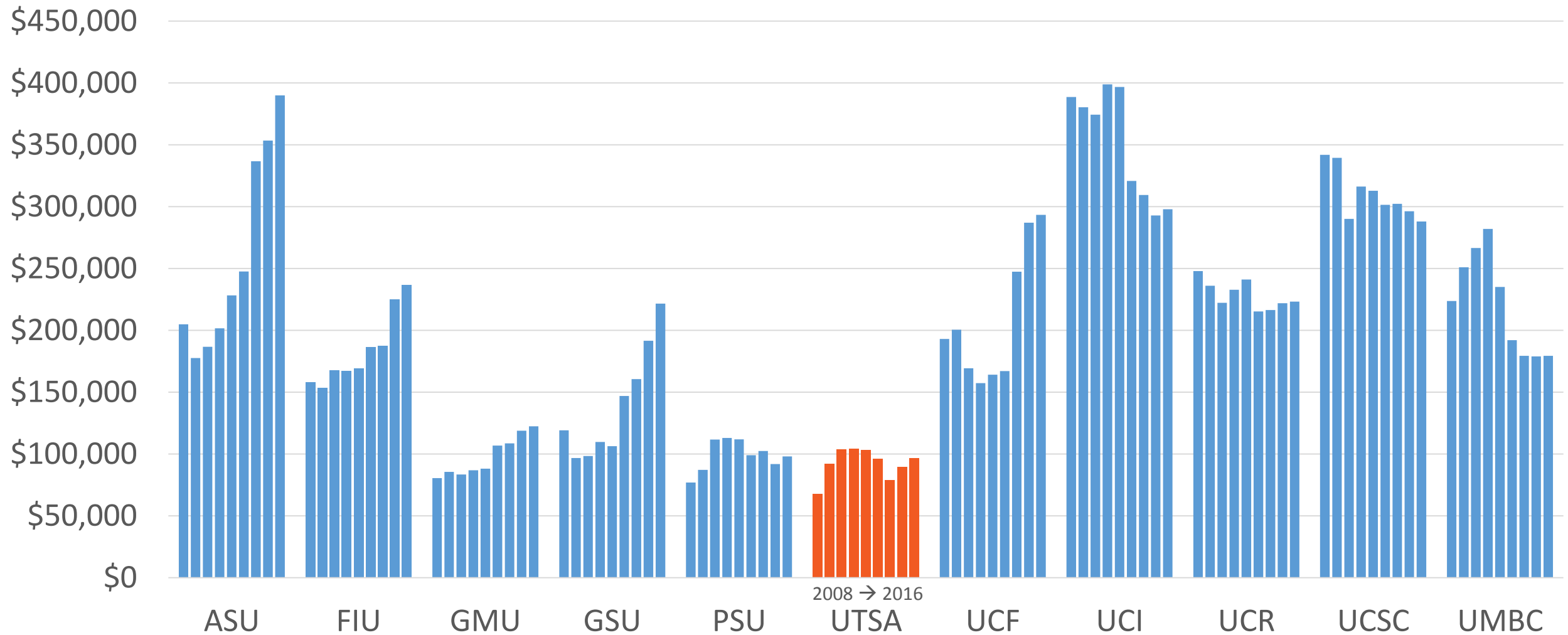
Annually by University from 2008-2016



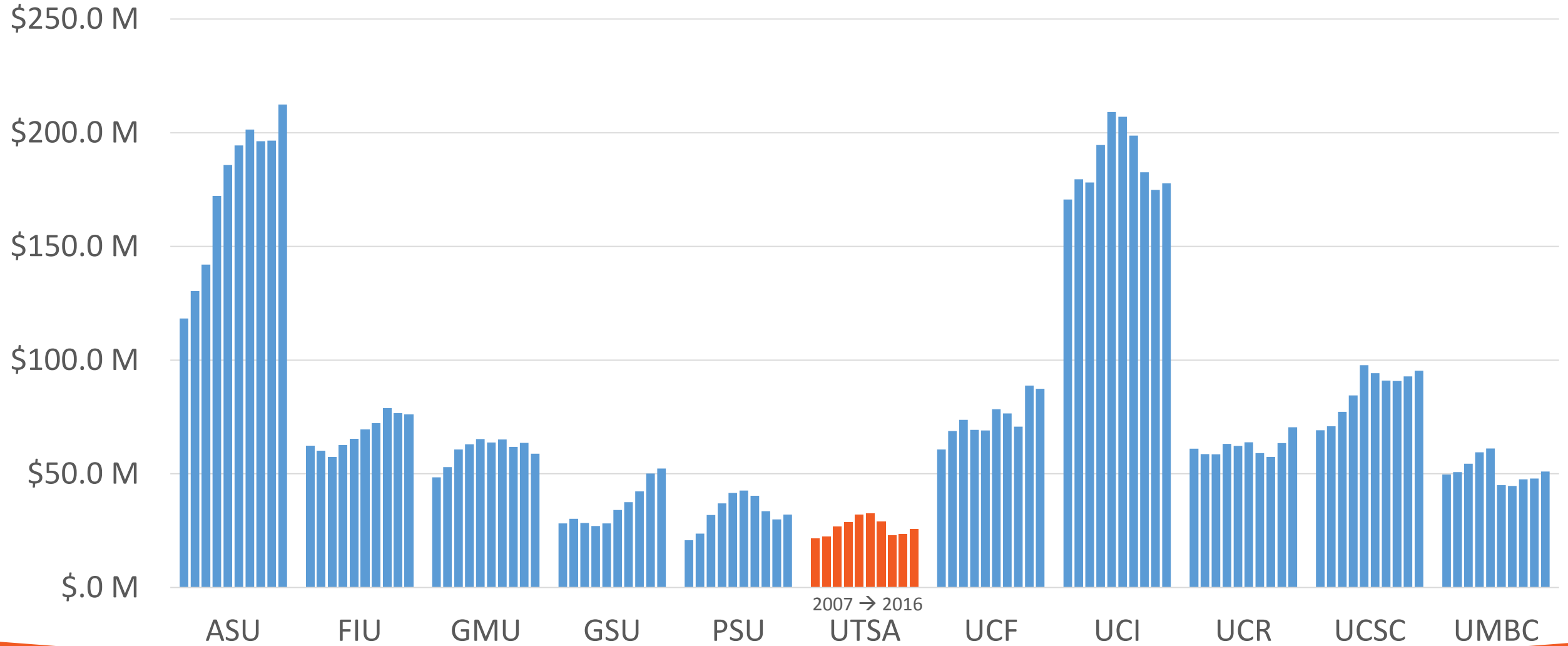
Total Research Expenditures Annually by University from 2007-2016



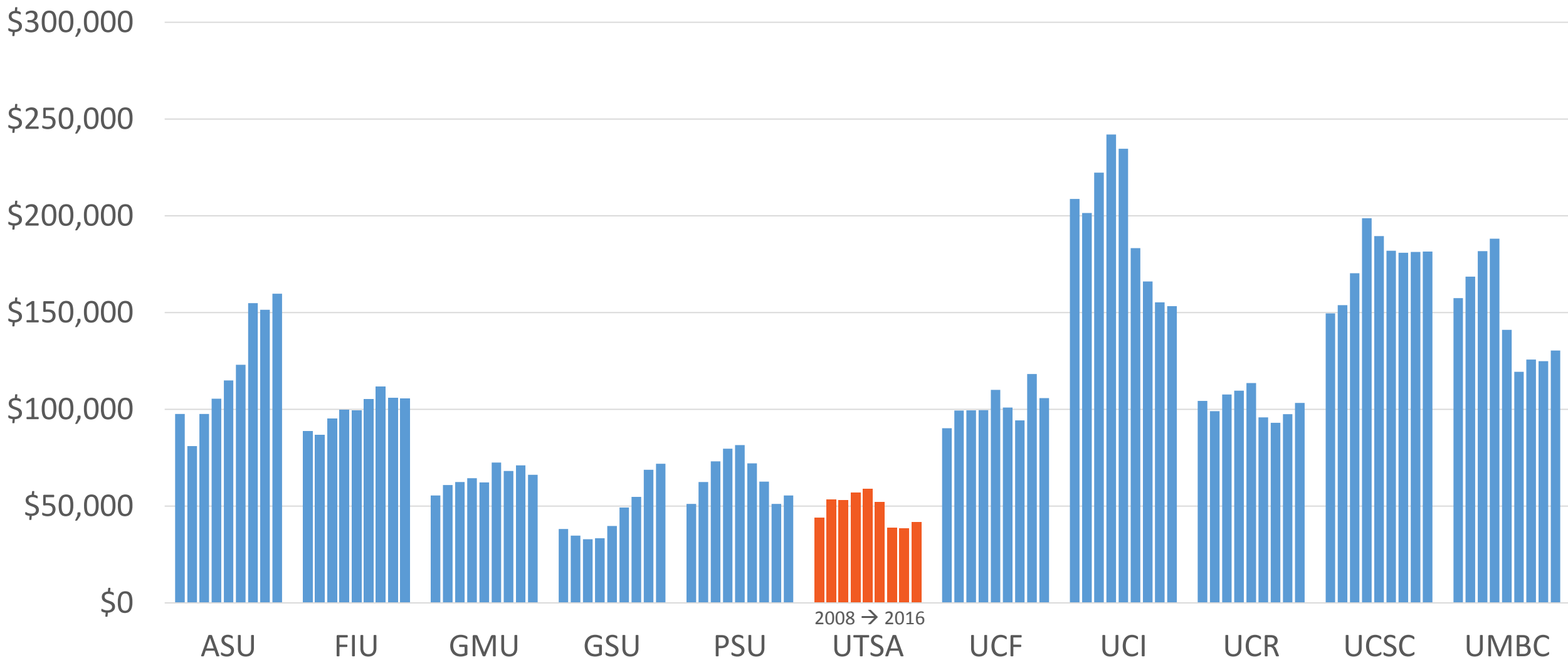
Total Research Expenditures per Tenure/Tenure Track Faculty Annually by University from 2008-2016



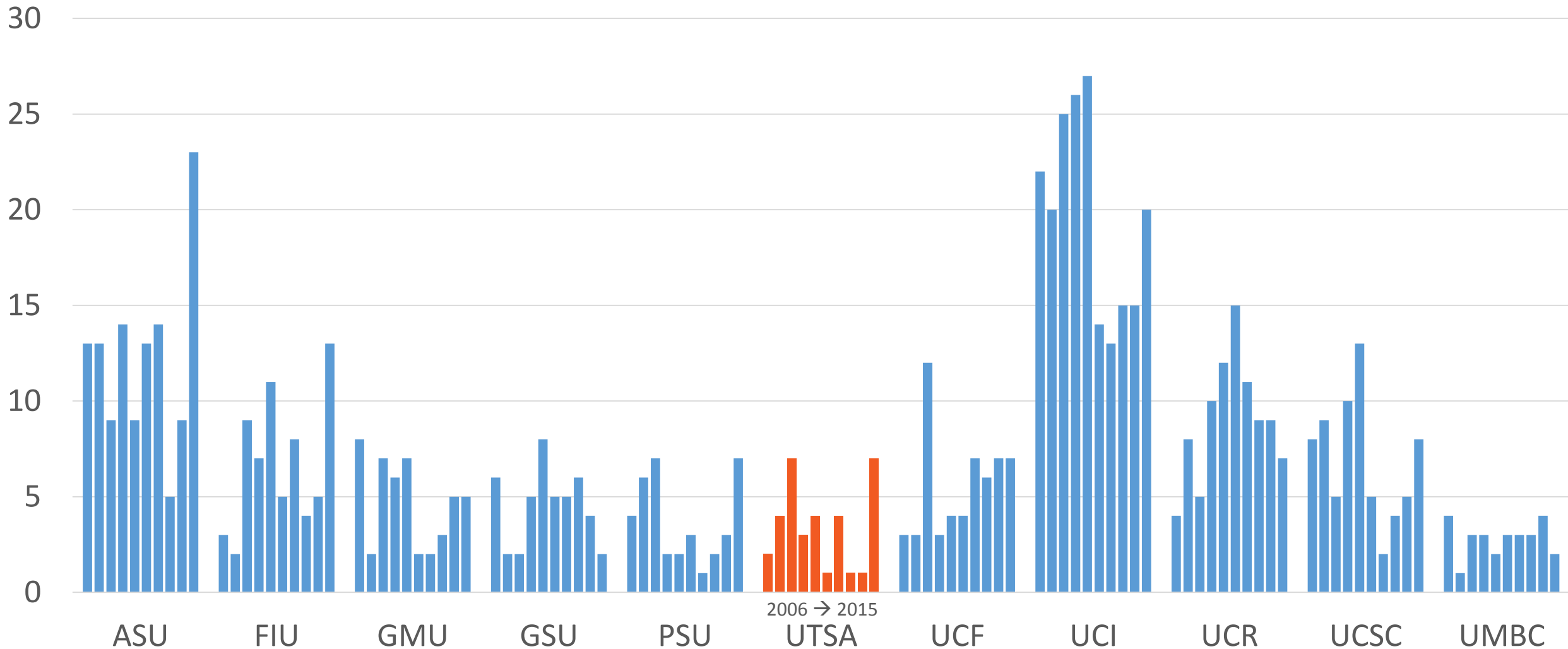
Federally Financed Research Expenditures Annually by University from 2007-2016



Federally Financed Research Expenditures per Tenure/Tenure Track Faculty Annually by University from 2008-2016



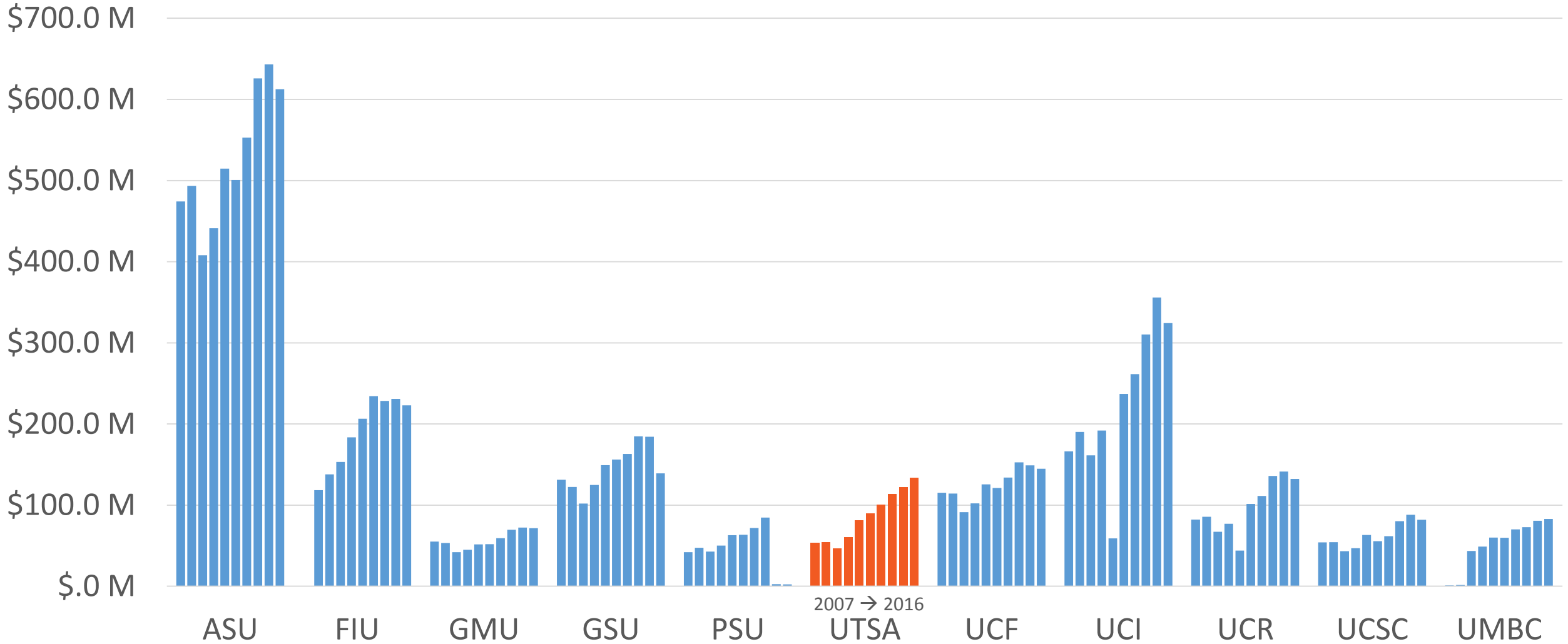
Number of Faculty Awards Annually by University from 2006-2015



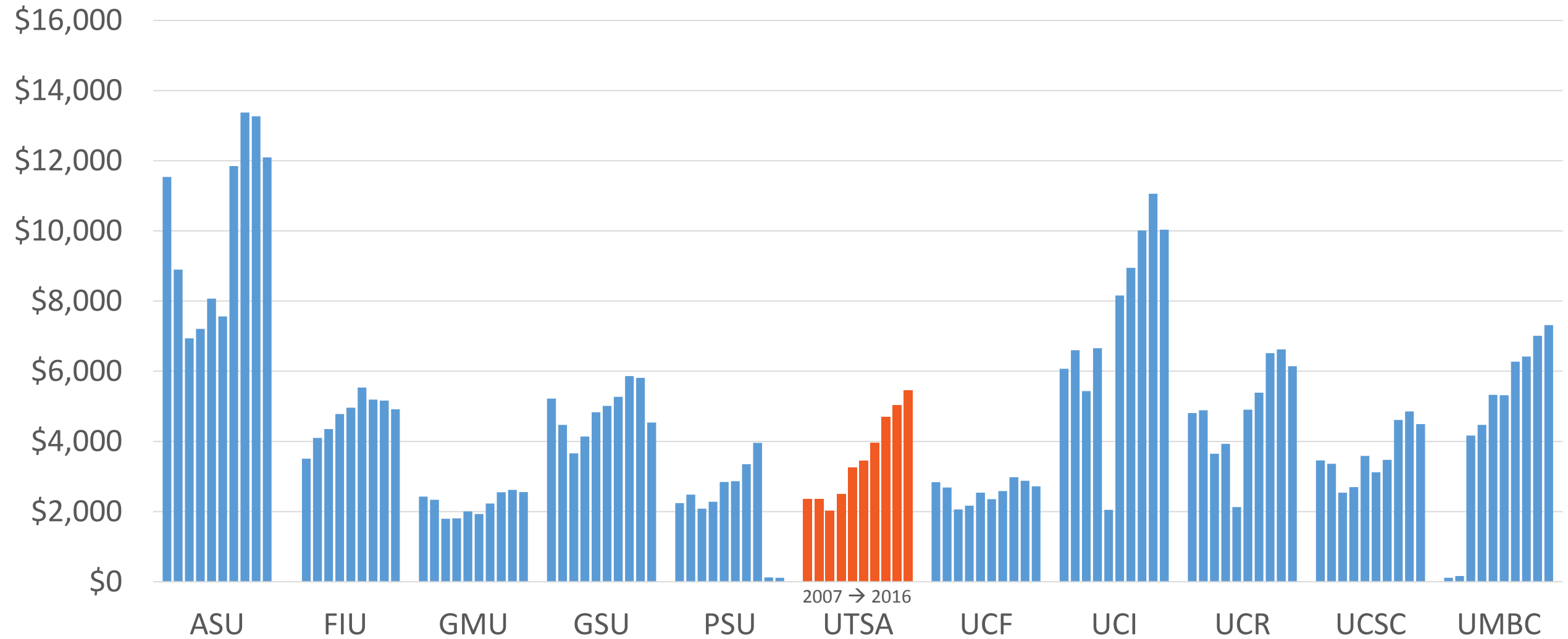
Total Number of Faculty Awards Annually by University from 2006-2015

Arizona State University	122
Florida International University	67
George Mason University	47
Georgia State University	45
Portland State University	37
The University of Texas at San Antonio	34
University of California-Irvine	197
University of California-Riverside	90
University of California-Santa Cruz	69
University of Central Florida	56
University of Maryland-Baltimore County	28

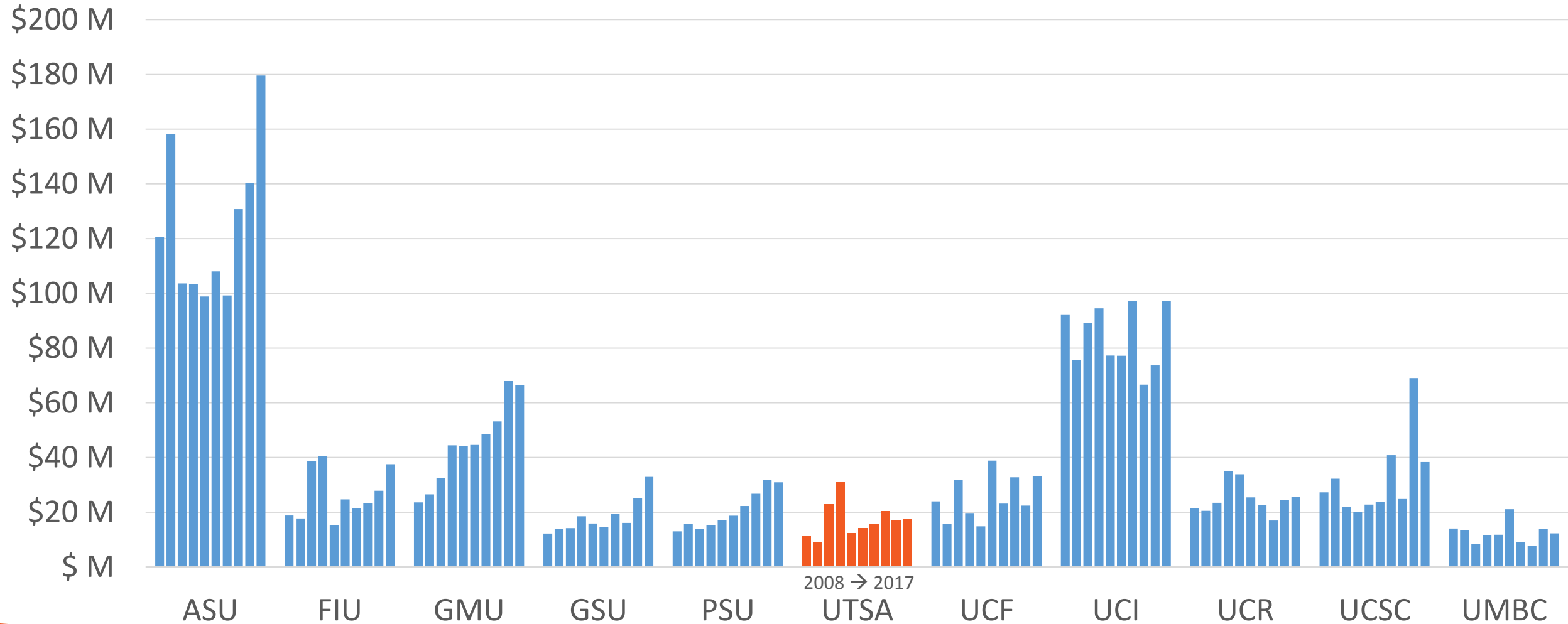
Value of Endowment Assets at End of the Fiscal Year (In millions) by University from 2007-2016



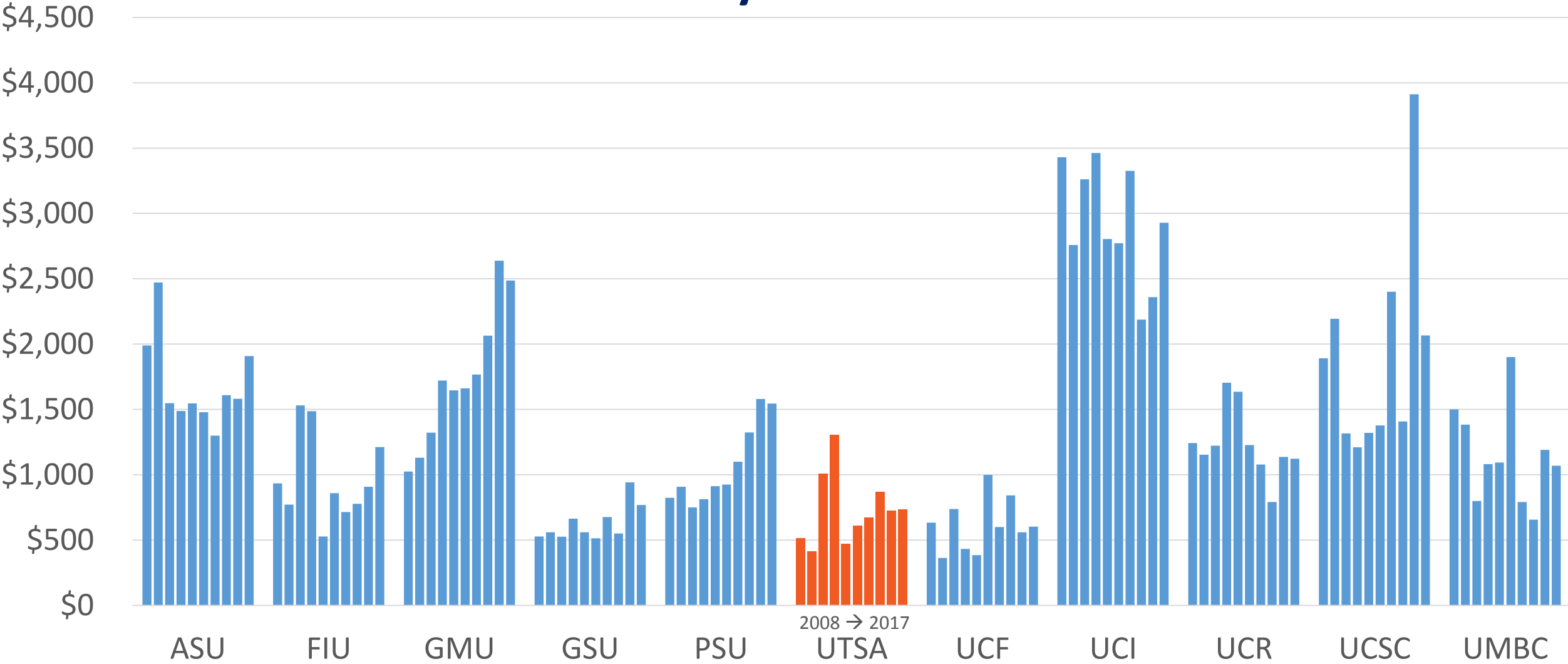
Value of Endowment Assets at End of the Fiscal Year per FTE Student by University from 2007-2016



Annual Giving by University (in millions) from 2008-2017



Annual Giving per FTE Student by University from 2008-2017



Value Source: Voluntary Support of Education Survey
 Annual Giving: Sum of Gift Income from Current Operations, Capital Purposes, and Deferred at Present

Administrative Cost as a Percent of Instructional Cost

Annually by University from 2007-2016

