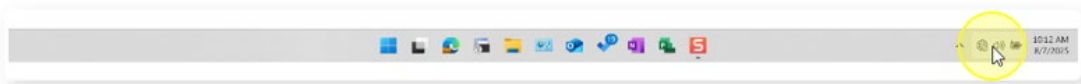
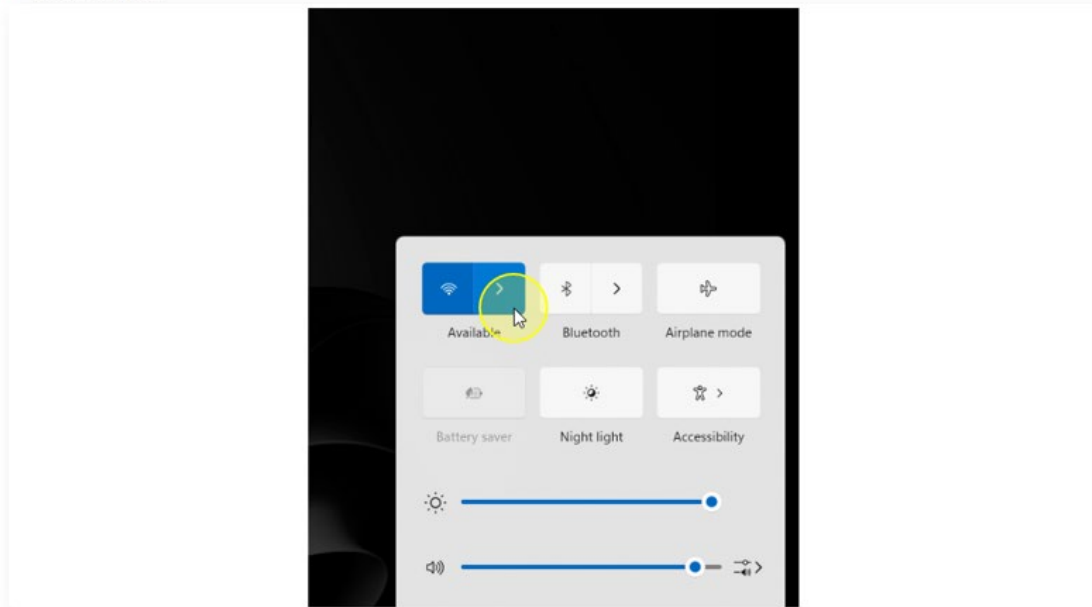


## Connecting to Eduroam for Windows

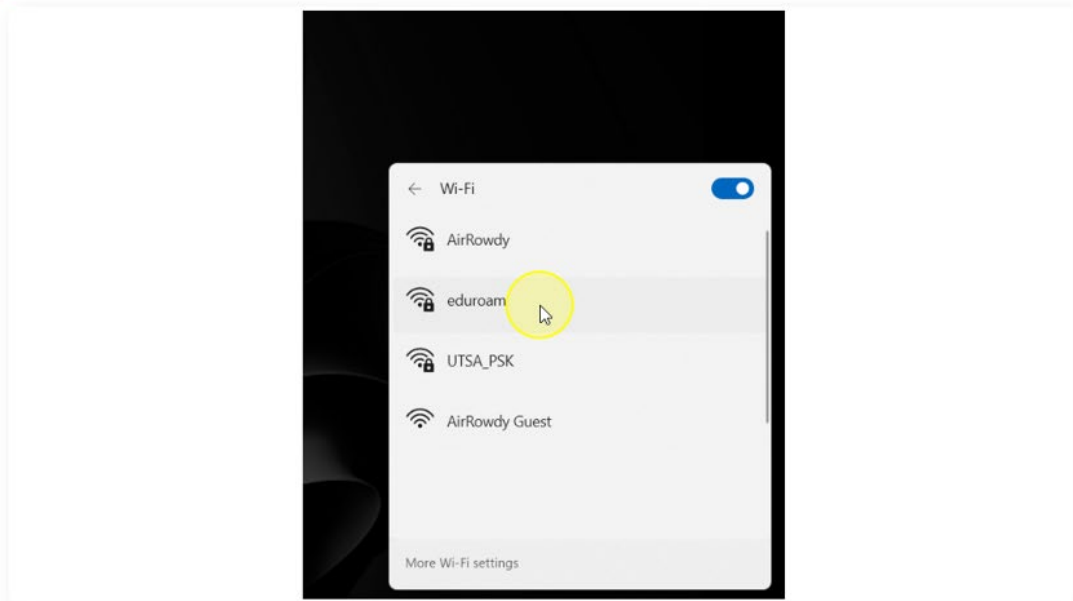
- 1 Click the network/volume/battery icon in the system tray to open the **Quick Settings flyout**



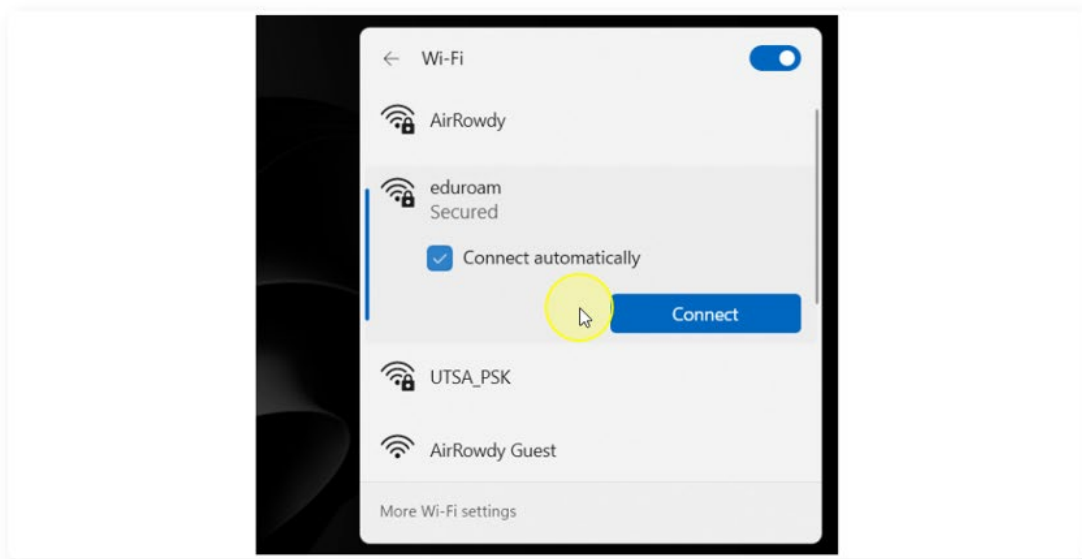
- 2 Click the **right-arrow icon next to the Wi-Fi icon** to view available wireless networks



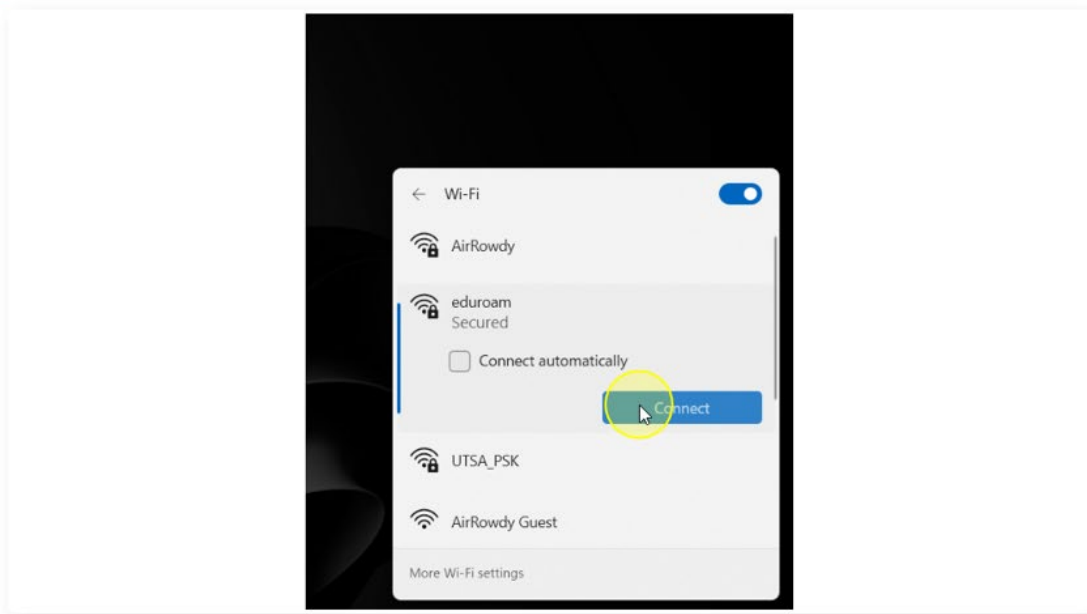
3 "Select '**eduroam**' from the list of available networks"



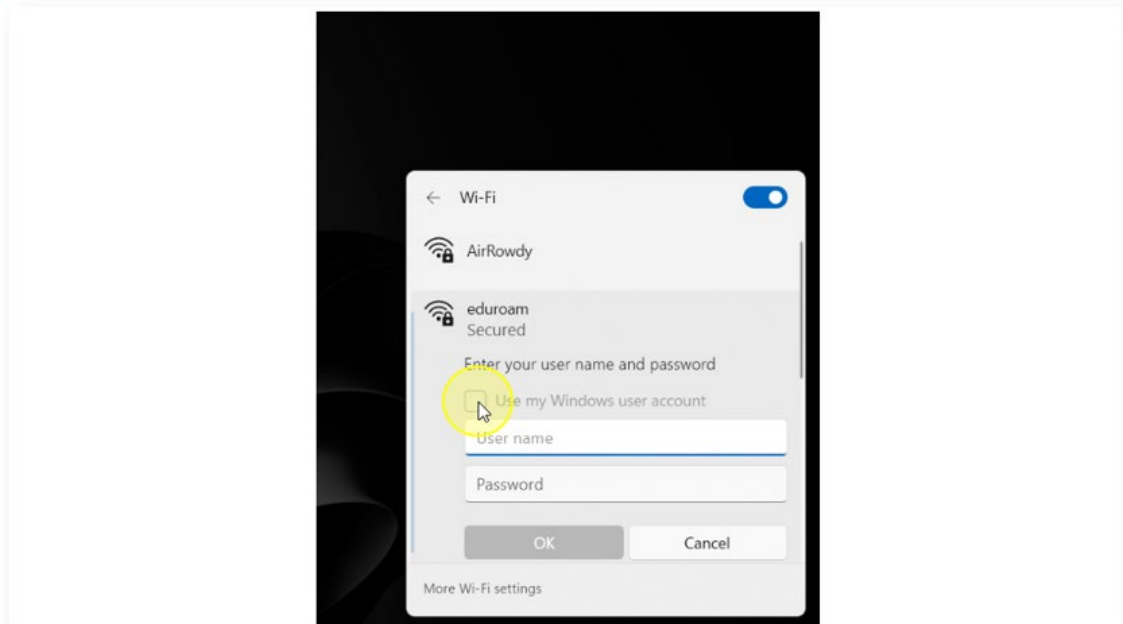
4 Leave '**Connect automatically**' unchecked to maintain control over when your device connects to Eduroam (recommended for users who can connect to AirRowdy instead)"



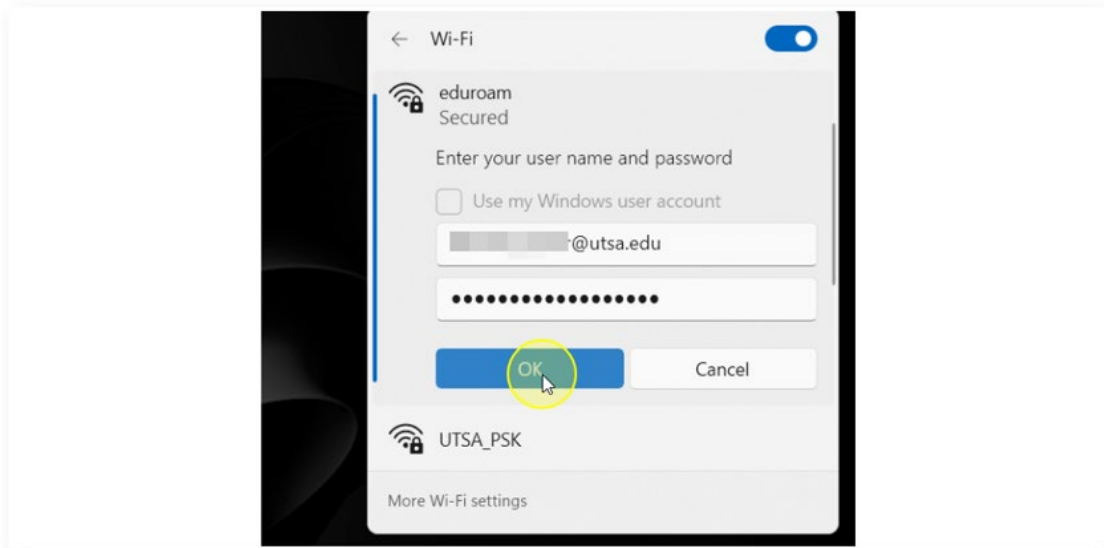
5 Click **"Connect"**



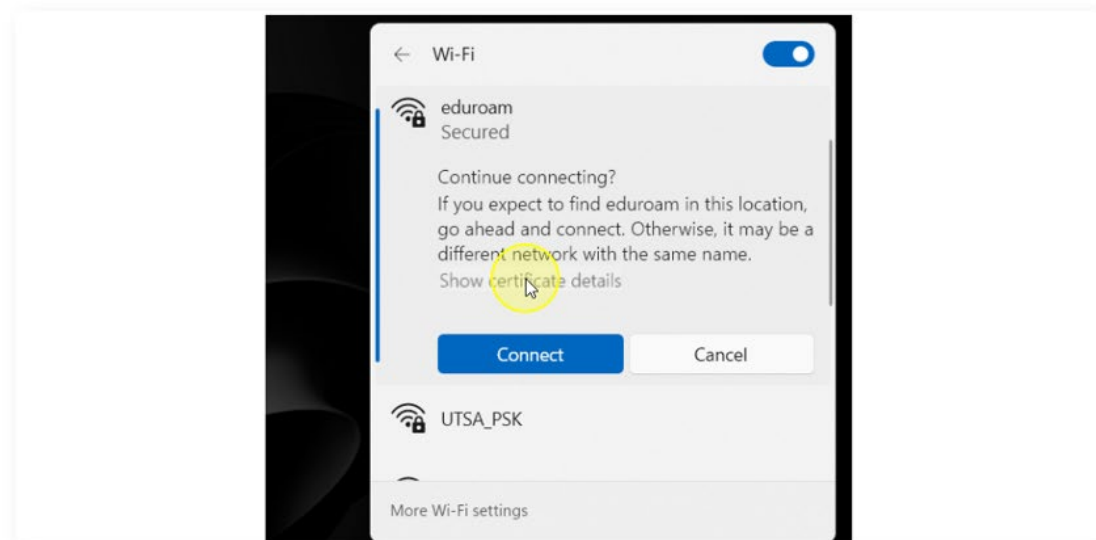
6 Uncheck **"Use my Windows user account"**



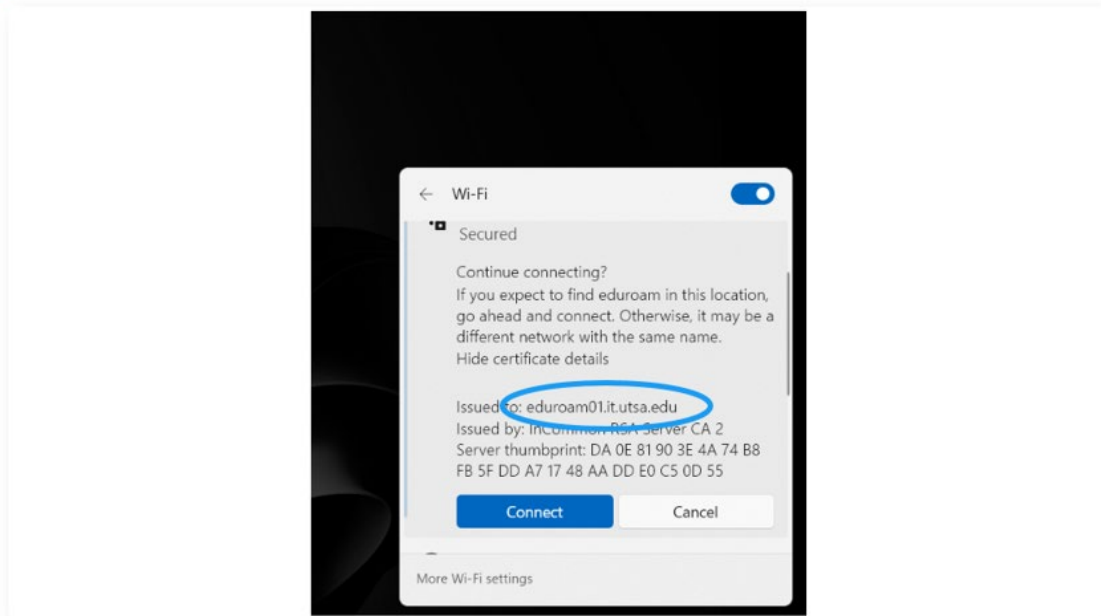
- 7 Important:** When prompted for credentials, enter your **university email username and password**. **Do NOT use Windows device credentials** or allow the system to use saved device login information, as these will not work with Eduroam



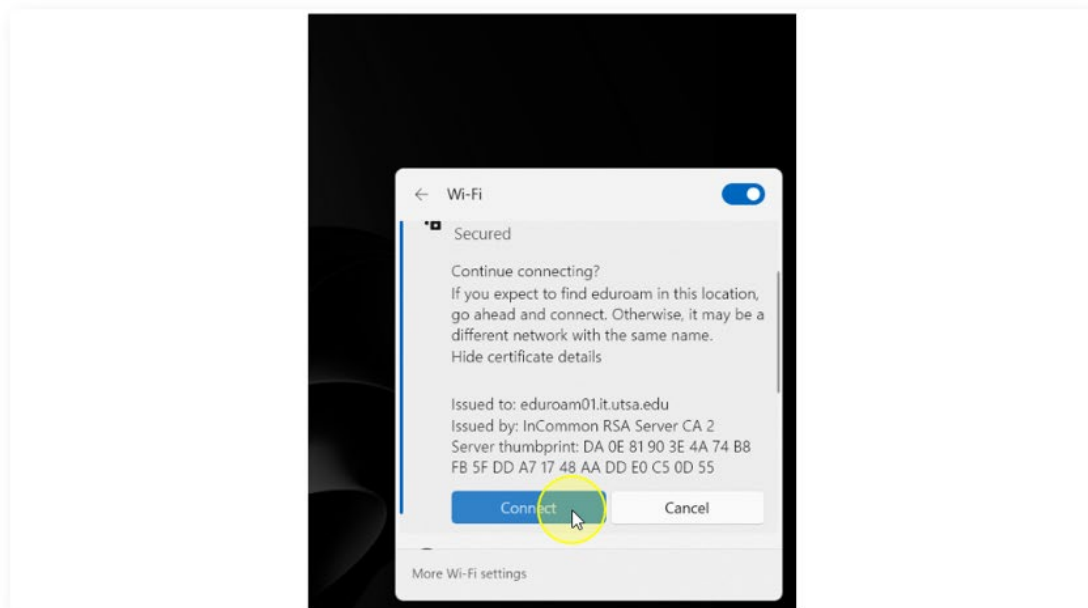
- 8** Review the security certificate details by clicking on "**Show certificate details**"



9 Confirm the authentication server is "eduroam01.it.utsa.edu"



10 Click "Connect"



- 11 Verify the connection to eduroam indicated it is "**Connected**".

